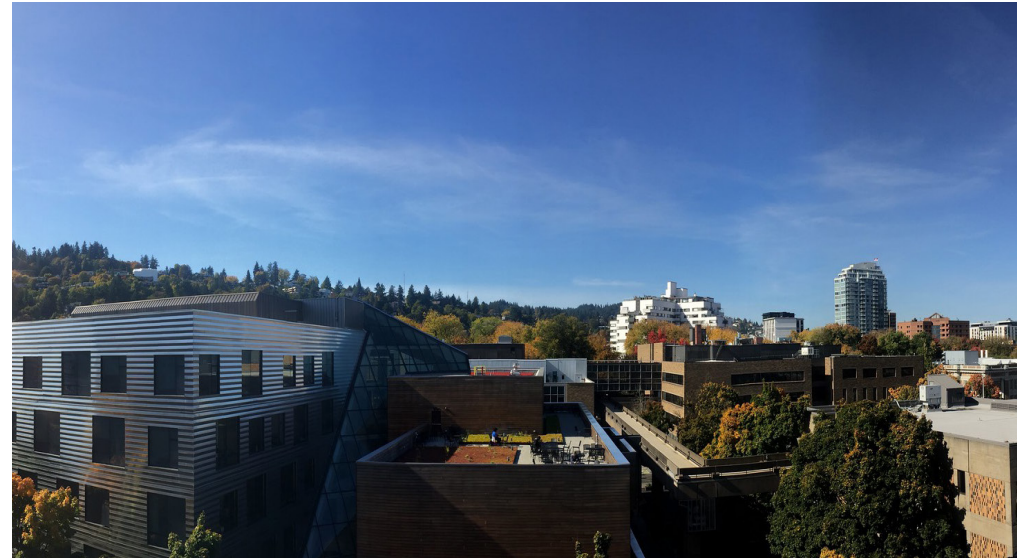


ANNUAL REPORT

Fiscal Year 2019-20

The Campus Sustainability Office (CSO) nourishes a growing culture of sustainability within PSU and enables a vibrant living laboratory for exploration and innovation. Through partnership and collaboration, we aim to align policy, practice, and planning with PSU's sustainability, resilience, equity, and educational goals.



Portland State University

CAMPUS SUSTAINABILITY OFFICE

STAFF

Campus Sustainability Director

Jenny McNamara

Waste Management Coordinator

Brandon Lesowske

Program Analyst

Amanda Wolf

Programs + Partnerships Coordinator

Emily Quinton

Graduate Assistants

Sustainability Data Analyst

Rob Hemphill

Student Positions

Marketing + Communications Specialist

Alesha Delaney

Reuse Coordinator

Alexandra Vargas

Waste Reduction Specialist

Gwynn Mackellen

COVID-19 IMPACTS, UPDATES, & WHAT WE SEE FOR 2020-2021

Along with the rest of PSU, the CSO team began working remotely in mid-March, 2020, due to the COVID-19 pandemic. Our team has been able to continue several programs and projects by pivoting to virtual forms of engagement and collaboration, while some of our work has changed drastically. As of this writing, campus activities continue to be limited and we are planning to support a largely remote school year.

Over the past several months, our team has supported PSU's coronavirus response in a variety of ways. For example, campus sustainability director, Jenny, is working closely with Materials Management Services and the Incident Management Team to plan for the return to campus, including countless decisions around disinfectant supplies in buildings, and continuity of mail services, stores, and more. Brandon, waste management coordinator, has worked with partners and our waste hauler, Republic Services, to totally transform how waste is being processed and removed from campus, turning from a set pick-up schedule to on-demand. Through her utility management work, Amanda, CSO's program analyst, is helping to track and understand changes in campus energy use, which is a complex picture likely to continue changing.

Two key areas of our work that have changed significantly are waste reduction efforts and education programs. Many of PSU's waste reduction programs are on hold for now - the Reuse Room is closed and CSO is not operating Mug Runners, the Green Party Kit, Chuck It for Charity and other materials reuse programs. There are still many opportunities to promote waste reduction on campus and at home, and we are excited to continue engaging in this work with partners on campus and the Student Sustainability Center Waste Reduction Task Force. With no in-person campus sustainability tours and new employee orientations, direct interactions with students, faculty, and staff have declined. By offering recorded and/or virtual ways of learning about and engaging with campus sustainability work, we hope to continue connecting with the PSU community, collaborating on projects, and support student and staff sustainability innovations!

EDUCATION, OUTREACH, & FACILITATION

BY THE NUMBERS

STUDENTS ENGAGED WITH THE LIVING LAB PROGRAM **127**

STAFF REACHED AT NEW EMPLOYEE ORIENTATIONS SUSTAINABILITY PRESENTATIONS **209**

DOLLARS INVESTED IN THE GREEN REVOLVING FUND FROM DEPARTMENTAL TRAVEL OFFSETS **\$5302**

CAMPUS SUSTAINABILITY TOURS

12 TOURS

237 PEOPLE REACHED

Our audience included high school students, PSU students, landscape architecture students from Cal Poly Pomona, a group from the Korea Institute of Sustainable Design and Educational Environment (KISEE), and more.

A FRESH CAMPUS SUSTAINABILITY TOUR MAP

At Portland State, we strive to have every building turn to create a better world. Our 50+ buildings are a vibrant, living laboratory practicing sustainability, extending beyond the classrooms, offices, cafeterias, plazas, and gardens. We strive to innovate and lead in modes of sustainability both locally and internationally.



13 Reuse Room
The Reuse Room donates an abundance of home supply and employable items, reducing waste and promoting reuse.

14 Lincoln Hall
In 2011, Lincoln Hall was certified LEED Platinum. The building includes many sustainable features, including energy-efficient lighting, water-saving fixtures, and a green roof.

15 Broadway
Along Broadway, we have installed bike racks and bike repair stations to encourage sustainable transportation.

It all starts here. This self-guided tour will take you to many of the sustainability features on our campus.

1 Urban Center & Plaza
SW MONTGOMERY BETWEEN 5TH & 6TH
With the streetcar passing diagonally through the plaza, numerous bus stops, and three light rail lines, the Urban Plaza is one of the busiest transit hubs in the state. More than 40 percent of all student and employee trips to campus are made by transit. The neighboring Urban Center Building is the first existing building at PSU to receive LEED certification under the LEED Operations + Maintenance program.

7 Viking Pavilion & Scott Community Field
SW HARRISON BETWEEN 6TH & BROADWAY
The Viking Pavilion was completed in 2018 and is certified LEED Gold. Low-emitting materials were used throughout the building and most wood is reclaimed or FSC certified. Efficient fixtures are slated to reduce water consumption by 46% and energy consumption by 25%. Next door, the Scott Community field may look like an ordinary turf field, but is made of 20,000 recycled tires. The turf requires

>> [check it out](#)

Thanks to Campus Planning Office (CPO) for assistance with the map design and partners across Planning, Construction, & Real Estate (PCRE) for content updates.

EDUCATION, OUTREACH, & FACILITATION

EVENTS

&

PRESENTATIONS

● **PSU'S ECOROOF'S PRESENTATION** BY JENNY MACNAMARA AT THE URBAN LIVING ARCHITECTURE SYMPOSIUM

● EMILY QUINTON HELPED CREATE THE **FIRST CAMPUS AS LIVING LAB CURATED TRACK** FOR THE 2019 ASSOCIATION FOR THE ADVANCEMENT OF SUSTAINABILITY IN HIGHER EDUCATION (AASHE) CONFERENCE

● EMILY QUINTON HOSTED **CAMPUS AS LIVING LAB NETWORKING SESSIONS** AT AASHE 2019 AND WOHESC 2020

● WASHINGTON OREGON HIGHER ED SUSTAINABILITY CONFERENCE (WOHESC):

● BRANDON LESOWSKE PRESENTED "**COMMITMENT TO WASTE REDUCTION: DRIVING POLICY THROUGH ENGAGEMENT AND POLITICAL ACTION**"

● EMILY QUINTON PRESENTED "**RENEWABLE ENERGY OPTIONS FOR HIGHER EDUCATION**"

● ALESHA DELANEY LED THE **CONFERENCE YOGA SESSION**

A FRESH LOOK FOR OUR WEBSITE

Alongside the entire pdx.edu website, the Sustainability at PSU website and associated CSO content was updated over the summer of 2020. Check out the new website and share your feedback with us!

>> [check out the new site](#)



Sustainability at PSU staff at the 2020 Washington Oregon Higher Ed Sustainability Conference.

BENCHMARKING & RECOGNITION

RANKINGS

TIMES HIGHER EDUCATION (THE) RANKINGS

Top 200 internationally and top 20 domestically for supporting the sustainable development goals (SDG's):

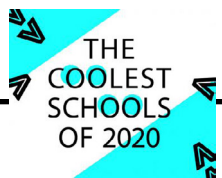
- SDG4: Quality Education - PSU ranked **41st**
- SDG6: Clean Water and Sanitation - PSU ranked **70th**
- SDG11: Sustainable Cities and Communities - PSU ranked **55th**
- SDG13: Climate Action - PSU ranked **74th**

#37 - SIERRA COOL SCHOOLS

In Sierra Magazine's annual "cool schools" ranking for sustainability leadership, PSU ranked 37th again this year. Sierra Magazine, run by The Sierra Club, assesses university performance on everything from electricity sources to food served in dining halls.

#15 - PRINCETON REVIEW GUIDE TO GREEN SCHOOLS

The Princeton Review releases the Guide to Green Schools every year as a tool for college applicants seeking schools with exemplary commitments to the environment and sustainability.



GREEN PARTY KIT

A SET OF DURABLE DISHES AND SILVERWARE AVAILABLE FOR CAMPUS DEPARTMENTS AND GROUPS TO USE HELPING TO REDUCE SINGLE USE DISHWARE.

32

NUMBER OF TIMES BORROWED

1,679

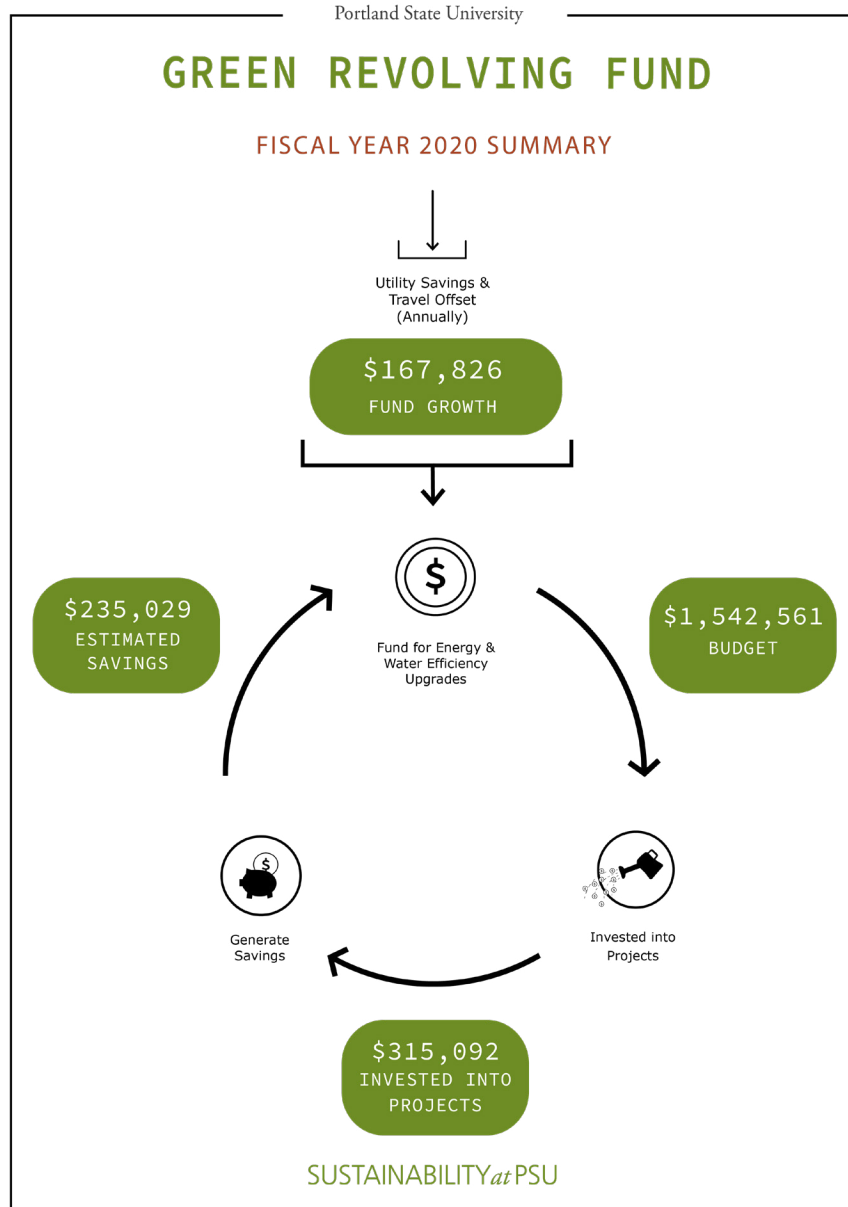
APPROXIMATE PLACE SETTINGS PROVIDED

TREE CAMPUS USA

PSU'S TREE CAMPUS USA CERTIFICATION WAS RENEWED FOR THE 6TH YEAR

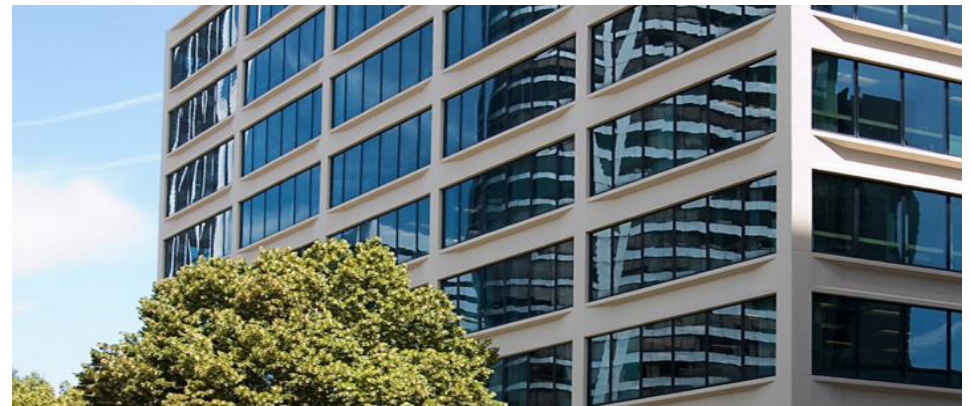


GREEN REVOLVING FUND (GRF)



LIGHTING RETROFIT UNDERWAY FOR RMNC

Based on occupant feedback and an energy audit conducted at the Richard and Maurine and Neuberger Center (RMNC) during the 2018 LEED Operations and Maintenance certification, funding was approved for a complete lighting retrofit. This retrofit will remove all fluorescent lighting from the building and replace it with energy efficient LED lighting that also provides better light quality for the occupants of the building. The total cost of this project is approximately \$315,000, resulting in an anticipated energy savings of \$28,300 a year. The project is underway now.



MAKING GRF PROJECTS MORE EQUITABLE

This year the GRF committee reviewed the selection criteria for selecting projects adding preferred selection criteria that promotes racial equity and accessibility.

SUSTAINABILITY TRACKING, ASSESSMENT, & RATING SYSTEM (STARS), **GOLD**



74.87
OUR HIGHEST SCORE YET

STARS ACTION PLANNING

Following our 2020 STARS submission, CSO led a new planning process to establish a one year action plan to identify best practices and increase our STARS score. In partnership with key stakeholders, we have identified 24 high priority actions to complete this coming year. This new “STARS Action Planning” process offers a new way of examining our culture and where we stand in the implementation of best practices (see Figure 1).

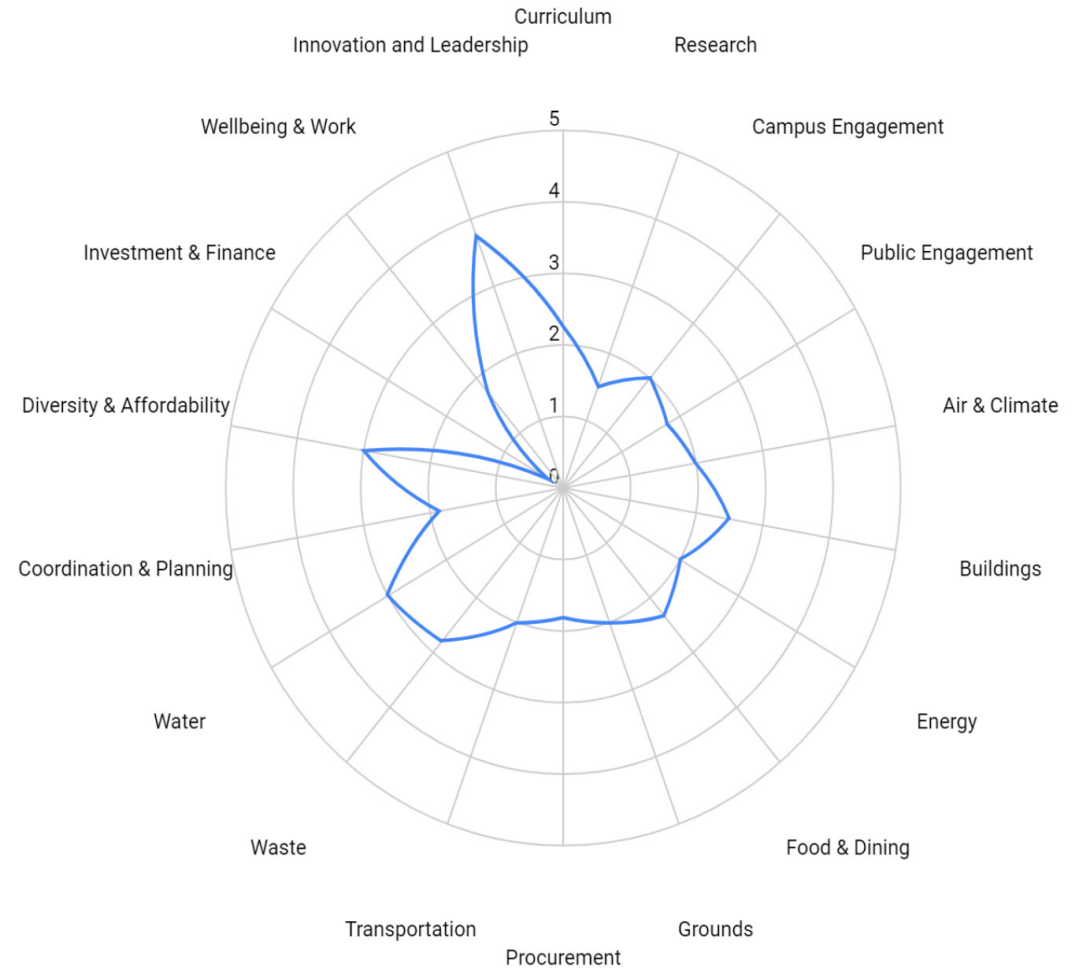


FIGURE 1: STARS SCORES
THIS CHART REPRESENTS THE EXTENT TO WHICH CSO AND CAMPUS STAKEHOLDERS FEEL PSU IS ADDRESSING THE LISTED CATEGORIES, WITH 5 BEING WORLD CLASS AND 1 BEING ENGAGED.

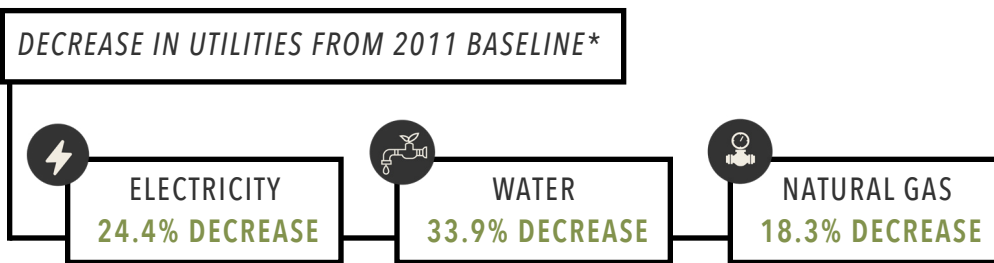
BENCHMARKING & RECOGNITION: GREENHOUSE GAS & UTILITIES

GREENHOUSE GAS EMISSIONS

In 2019, PSU completed a comprehensive greenhouse gas inventory for 2011-2019 that calculates our full climate impact. In comparison with an independently calculated 2008 baseline, **PSU has achieved a 23.57% reduction in GHG emissions.** When looking specifically at emissions from commuting, mobile and fugitive, purchased electricity, stationary combustion, travel, waste & wastewater, emissions fell even more, **PSU reduced emissions by 39.15%.**

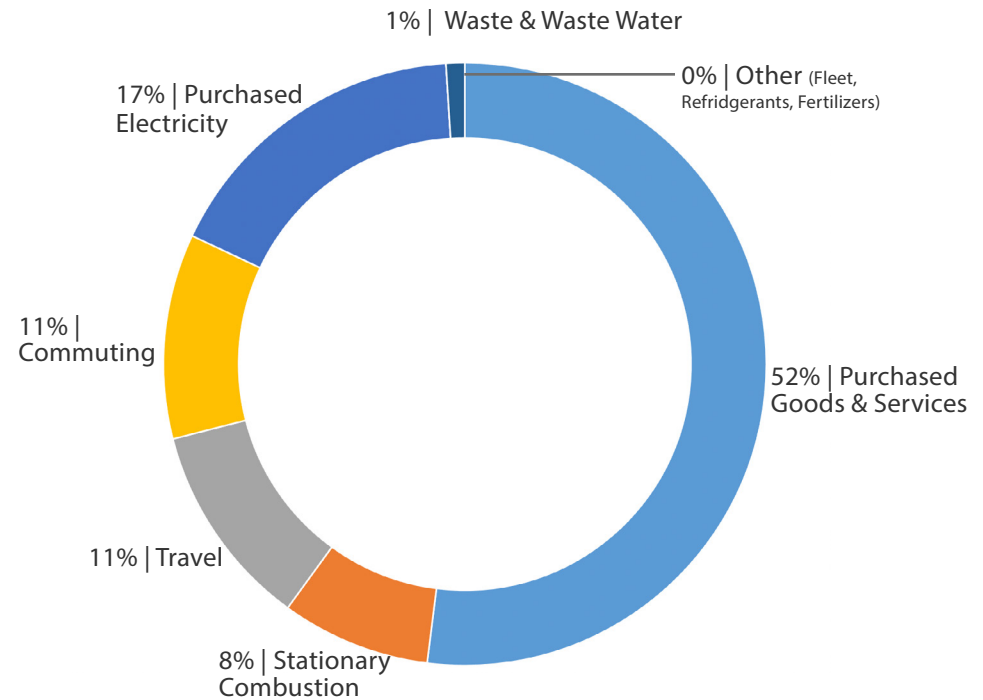
UTILITIES

In addition to the comprehensive greenhouse gas inventory, CSO also tracks utility use. **PSU has achieved significant reductions in all our utility consumption from our 2011 baseline.**



*This decrease includes the significant drop in utility usage on campus due to COVID-19 beginning in mid-March of 2020.

GHG CONSUMPTION 2019



TOTAL MTCO2
IN 2019

80,444.17 MTCO2

>> To learn more about PSU GHG Emissions & utilities visit our [Interactive Sustainability Dashboard](#) on our website.

BUILDING CAPACITY THROUGH COLLABORATION

SUSTAINABILITY AT PSU 13TH ANNUAL SUSTAINABILITY CELEBRATION

FOR THE FIRST TIME, THE SUSTAINABILITY CELEBRATION WAS HELD VIRTUALLY. WE CREATED A VIDEO TO HIGHLIGHT THIS YEAR'S AWARD WINNERS AND SHARE SOME INSPIRATIONAL MESSAGES FROM THE PSU COMMUNITY.

>> [WATCH THE VIDEO](#)



STAYING CONNECTED WHILE REMOTE THROUGH MOVIE SCREENINGS

AS PART OF OUR WORK WITH THE WASTE REDUCTION TASK FORCE, WE PARTNERED WITH THE STUDENT SUSTAINABILITY CENTER TO HOST A VIRTUAL FILM SCREENING OF THE STORY OF PLASTIC AND A Q&A WITH TWO OF THE FILM'S PRODUCERS. THIS ATTRACTED 81 ATTENDEES.



OUR COMMITMENT TO ANTI-RACISM

As part of Portland State University, we embrace that equity is core to PSU's values, and believe that a holistic definition of sustainability that centers social justice is essential to our work and our collective support of PSU's mission. Yet, we know that structural racism is present in our departments, PSU, and the sustainability movement as a whole. We've failed to do the hard work necessary to change the systems that continue to perpetuate racism and white supremacy, and the violent unjust impacts of these systems on Black people, Indigenous people, and people of color.

The sustainability movement and our community have been calling for more explicit leadership from us in centering social justice and equity in our work. We acknowledge that we have been slow to deliver adequate organizational and programmatic change and have not been responsive to the critical need for an anti-racist approach to everything we do.

In 2020, Sustainability at PSU and our three organizations have committed to turning what have been for too long passive intentions into action. We understand this is a lifetime commitment, and one that we do not take lightly.

ON THE HORIZON

Structural racism and equity review of all programs

Work is underway to identify and apply strategies for evaluating our collective work to identify where structural racism exists.

Develop an anti-racist action plan

At the same time and informed by the racism and equity review of our programs, we are identifying and committing to clear steps for removing structural racism and embedding an anti-racist lens into all of our work. We anticipate that any plans will evolve and change continuously based on program reviews, feedback from our community, and our own growth in understanding.

Accountability and Transparency

We are incorporating check-ins and updates on our individual, departmental, and collective anti-racism work into regular Sustainability at PSU meetings. We will establish effective mechanisms for community and external feedback on our work.

ON THE HORIZON

- We will begin work on our next round of LEED O+M certifications for campus buildings.
- Sustainability at PSU is evolving: we are in conversation with the Student Sustainability Center and the Institute for Sustainable Solutions to figure out what the future of Sustainability at PSU will look like. Stay tuned!
- With the shift to remote work, engagement with our Living Lab Program will continue to create more virtual projects.
- We are anticipating PSU being recertified as a Salmon Safe Campus. This peer-reviewed certification program assesses land use practices, such as properly managing stormwater runoff, reducing use of chemicals, conserving the urban tree canopy, and more.
- Following the first round of tree plantings on SW Broadway, Phase II of the Broadway Arboretum will begin in 2021.
- CSO will continue working with PSU Eats on a Campus Fair Trade Resolution for PSU.



OUR PARTNERS

Campus Recreation (CREC)
 Capital Projects & Construction (CPC)
 Campus Planning Office (CPO)
 Chartwells (PSU Eats)

Contracting & Procurement Services (CAPS)
 Facilities & Property Management (FPM)
 Housing & Residence Life (HRL)
 Institute for Sustainable Solutions (ISS)

Queer Resource Center (QRC)
 Student Sustainability Center (SSC)
 Transportation & Parking Services (TAPS)
 Student Health and Counseling (SHAC)

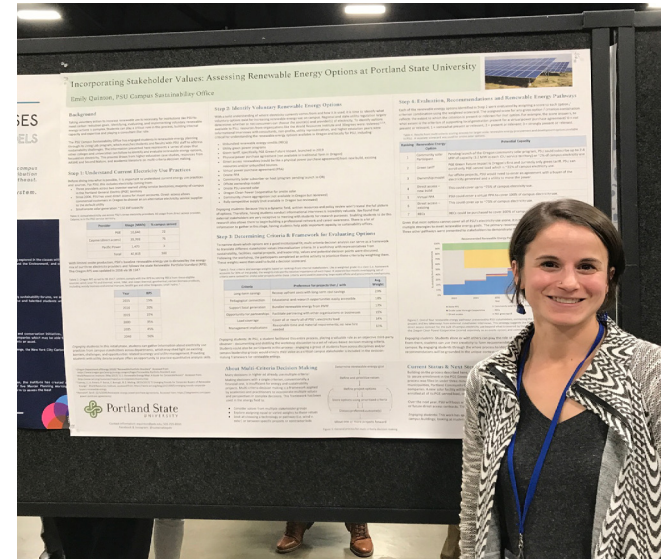
LIVING LAB END OF YEAR SUMMARY

The Living Lab Program engages students and faculty in campus-based applied sustainability projects in partnership with operational staff. By bringing together the academic and operational side of PSU, the Living Lab program empowers students, faculty, and staff to apply creative and innovative approaches to campus-based research questions or challenges, and advance and inform campus sustainability goals. Everyone involved in a Living Lab project has the opportunity to spur meaningful changes in campus practices, policies, and built environment. Living Lab is facilitated as a partnership between the Campus Sustainability Office, Facilities & Property Management department, and Institute for Sustainable Solutions.

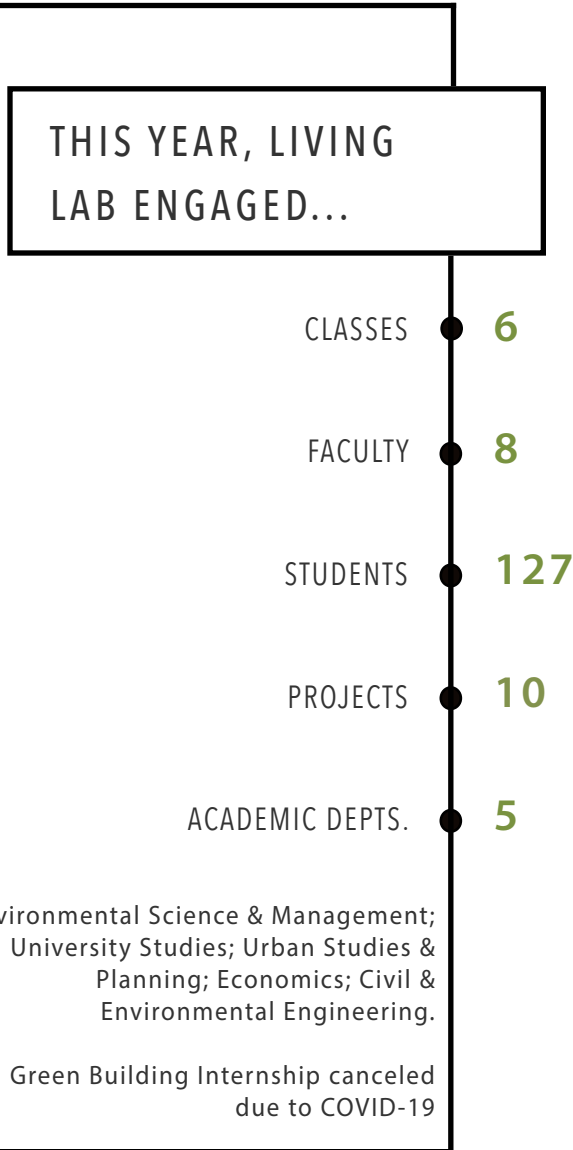
Read on to learn more about individual Living Lab projects and program developments from the 2019-2020 academic year.

To learn more and see how you can get involved in the PSU Living Lab program visit our website or email livinglab@pdx.edu.

>> [check out our website](#)



LIVING LAB END OF YEAR SUMMARY



PROJECT HIGHLIGHTS

Creative engineering solutions

This year, Living Lab supported four Civil & Environmental Engineering capstone projects. The projects included: (1) phase three of the emergency wells project, focused on determining how a DIVVY water filtration system could be used at a PSU well in an emergency; (2) studying traffic patterns and egress in Parking Structure 1; (3) conducting an initial feasibility assessment to see how the Harrison Street Building could one day be renovated to Living Building standards; and (4) engineering design options for the Montgomery Street Plaza. As a two term capstone over winter and spring terms, the students working on these projects were able to successfully pivot and adjust their final outcomes to account for remote learning and working due to COVID-19.

Exploring PSU's food waste systems

First year students explored different parts of PSU's food waste systems in two projects this year, from the way food is served in PSU dining halls, to what students do with food scraps in on-campus residences. Using observations, data, and survey feedback, the students developed ideas on reducing food waste for the Campus Sustainability Office and PSU Eats.

Stormwater project kicks off

Two Environmental Science & Management graduate students launched their masters project in 2019 focused on studying PSU's stormwater management infrastructure. Their project "Current Stormwater Practices and Future Implementation at Portland State University with the Uncertainty of Climate Change" includes creation of an EPA Stormwater Management Model (EPA SWMM) for the PSU campus.

LIVING LAB END OF YEAR SUMMARY

PROGRAM DEVELOPMENTS

Approval to offer ELSA positions

Following an application process and committee meeting, Living Lab is approved to offer Living Lab Leadership Award positions, using the Educational Leadership Service Award (ELSA) system, established to support student leaders on campus. The Living Lab Leadership Award will support students working on intensive Living Lab projects individually or in small groups.

Networking with other living lab programs

CSO Program & Partnership Coordinator and Living Lab manager, Emily Quinton, became a co-chair of the Campus as Lab Community of Practice in Fall 2019. The Community of Practice is an open, informal networking group with about 160 members. Emily works with the other co-chairs to curate monthly webinars, host campus as a living lab networking opportunities at conferences, and curate a variety of online resources.

Program Resources Development

A variety of new program resources are being developed and finalized for use with 2020-2021 academic year projects. New resources include visuals showing the typical Living Lab project process and who's involved in a Living Lab project; refreshed guides for students, faculty, and staff partners containing expectations and tips for successful projects; and templates for communications and data sharing agreements. These resources will help set up everyone involved in projects for success.

LIVING LAB END OF YEAR SUMMARY

ON THE HORIZON

Social sustainability focus

Over the next year, the Living Lab team hopes to more intentionally develop social sustainability-focused projects, and to center the racial equity and social justice aspect of projects underway. While many projects have touched on social sustainability, such as highlighting how vulnerable communities are impacted by waste management systems, it is important to build projects around a social justice lens.

New partnerships on the horizon

Most Living Lab projects over the past few years have included departments within Planning, Construction, and Real Estate as the operational partner. New projects during the 2020-2021 school year will help expand operational partnerships, including with Campus Recreation and the campus art collection.

