

Cascades to Coast Stonefly Search

Help Scientists Search for Stoneflies!

Directions:

- Visit a small, shallow stream and use the net to search for and catch Stoneflies.
- **DO NOT COLLECT IN STREAMS DEEPER THAN YOUR CALF.**
- Identify the Stonefly using the guide below and take a picture of it.
- E-mail the picture of your Stonefly and where you found it to patrick.edwards@pdx.edu
- Submit three pictures of different Stoneflies will get a **free stream insect field guide!**

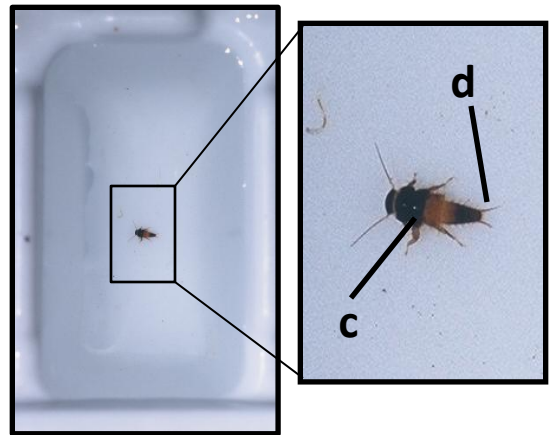
Beginner Level

Pacific Giant Stonefly



- Large and brown
- Boxy thorax (a)
- Gills on bottom of abdomen (b)

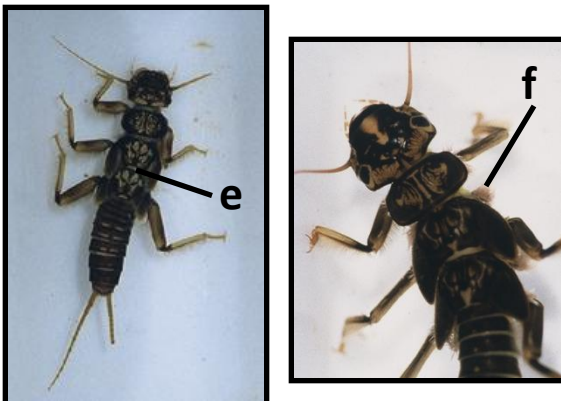
Roach Like Stonefly



- Small and red or brown
- Rounded thorax (c)
- Short tails (d)

Intermediate Level

Golden Stonefly



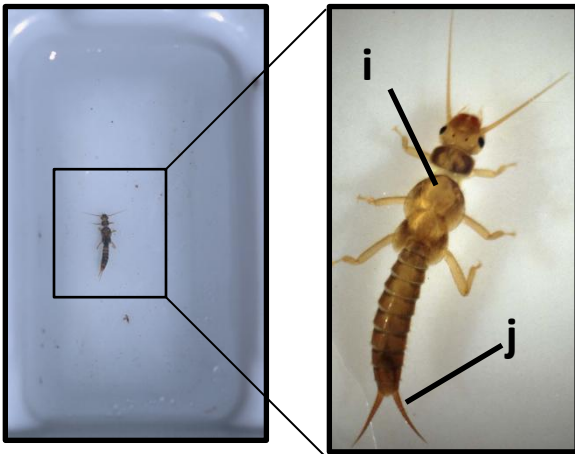
- Large and dark colored
- Patterns on head and thorax (e)
- Hairs at base of legs (f)

Yellow Stonefly



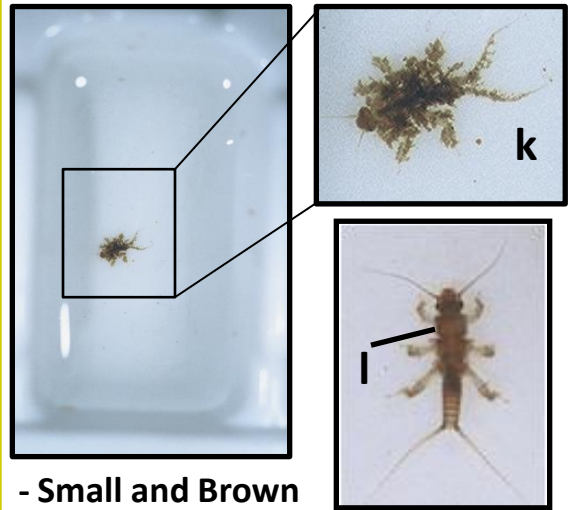
- Small to large and yellow colored
- Patterns on head and thorax
- No hairs at base of legs (h)

Green Stonefly



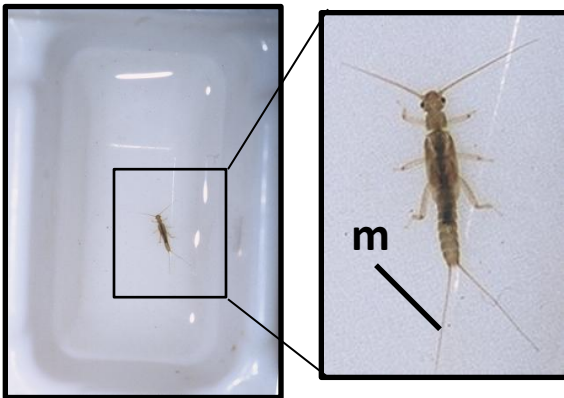
- Small and light brown
- Rounded thorax (i)
- Short tails (j)

Little Brown Stonefly



- Small and Brown
- "Fuzzy" looking (k)
- Boxy thorax (l)

Slender Stonefly



- Small, slender and tan
- Looks like a pine needle
- Long tails (m)

Stoneflies are amazing insects that live in fast-flowing, cold streams. Stoneflies are very sensitive to water pollution and habitat change. Find a Stonefly and help scientists learn more about the health of Oregon's Stream Insects! For more information, talk to your teacher or visit the Oregon Stonefly Search page.

www.pdx.edu/soe-gk12

The Oregon Stonefly Search is a Cascades to Coast GK-12 program. Support:



CASCADES TO COAST
GK12 FELLOWSHIP



Portland State
UNIVERSITY