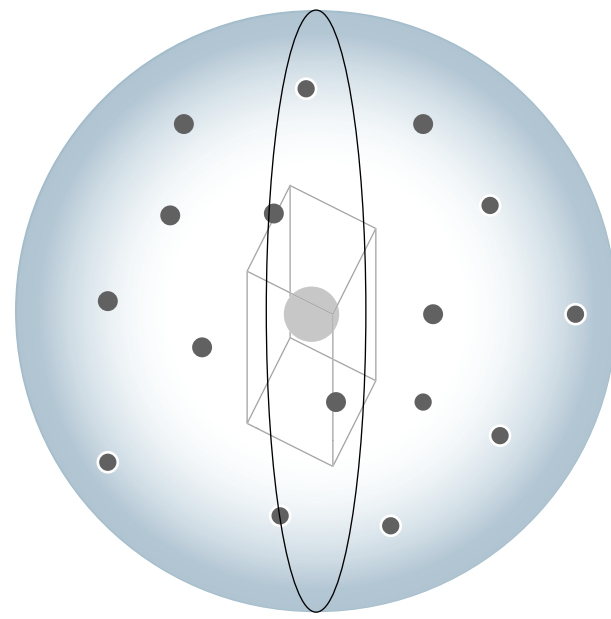
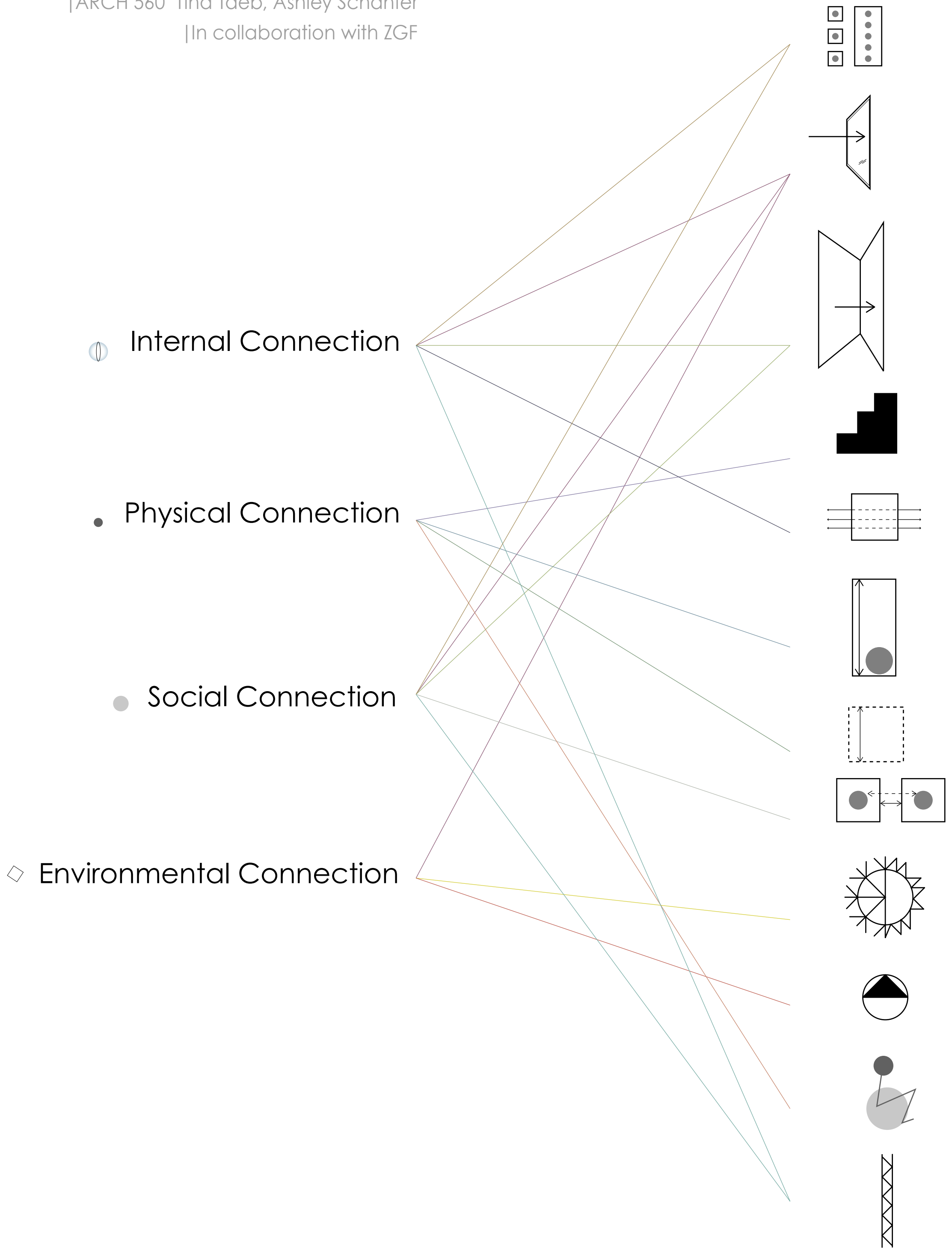


HEALTHY LIVING ENVIRONMENTS



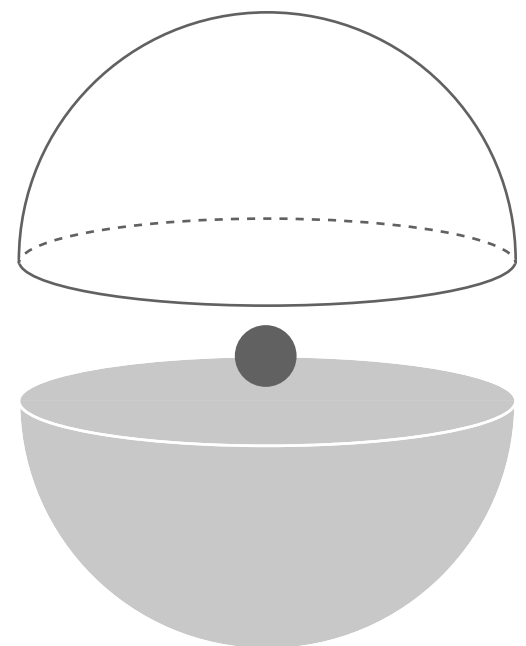
PORTLAND STATE UNIVERSITY ::
SCHOOL OF ARCHITECTURE

| ARCH 560 Tina Taeb, Ashley Schahfer
| In collaboration with ZGF



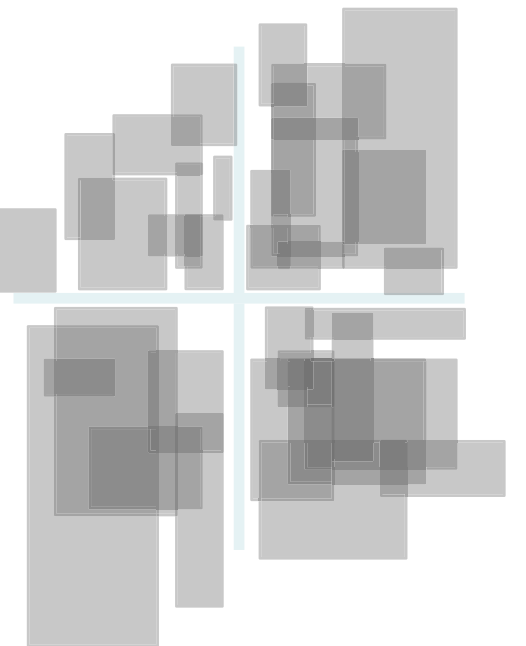
Internal Connection:

- | Drivers | Design elements |
|---------|-------------------|
| Control | Entry |
| Safety | Access |
| Privacy | Windows |
| | Wall thickness |
| | Common facilities |



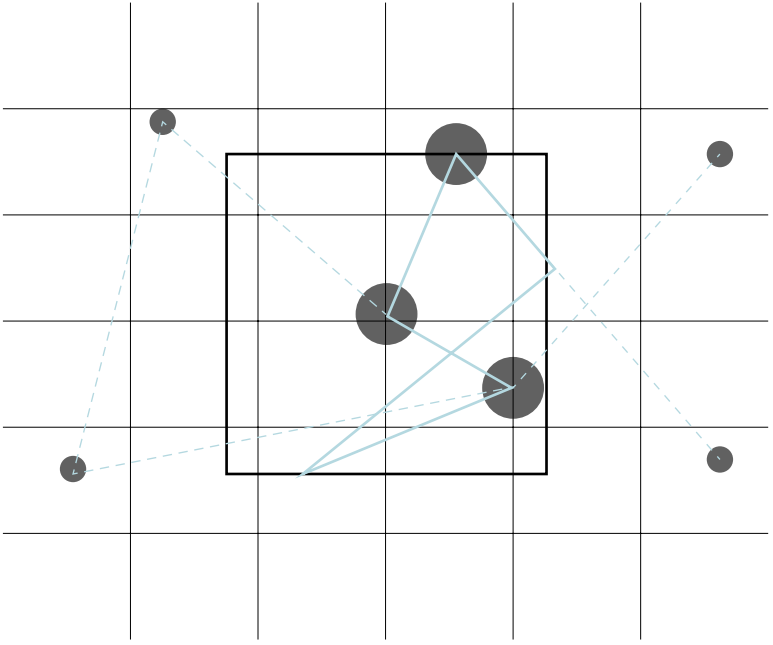
Physical Connection:

- | Drivers | Design elements |
|----------------------|---------------------|
| Layout organization | Ceiling heights |
| Organized complexity | Spatial dimensions |
| Familiarity | Hallway proportions |
| | Tiering |
| | Accessibility |



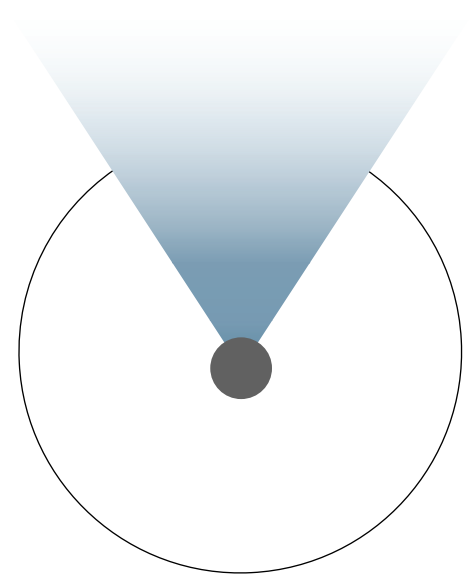
Social Connection:

- With building residents and the city
- | Drivers | Design elements |
|-------------|-------------------|
| Auditory | Entry |
| Visual | Windows |
| Interaction | Wall thickness |
| | Proximity |
| | Common facilities |

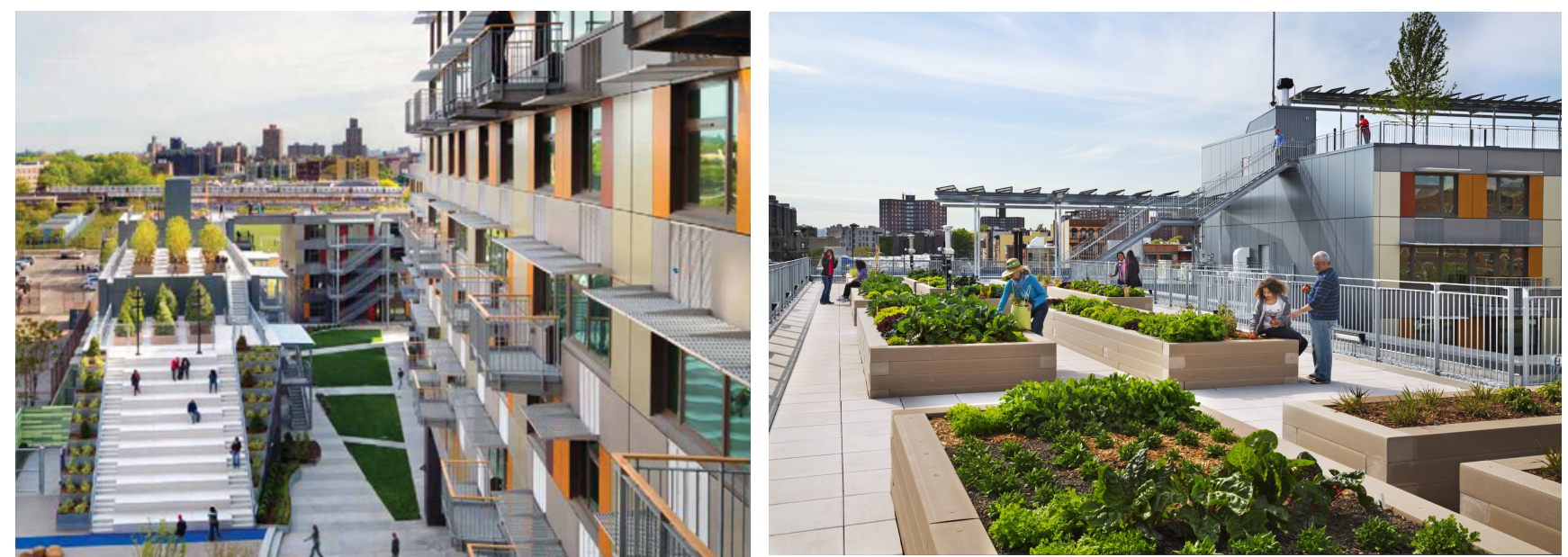


Environmental Connection:

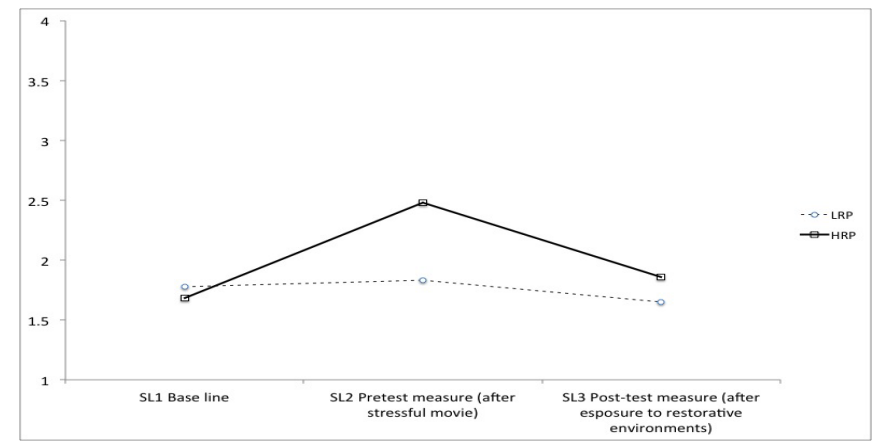
- | Drivers | Design elements |
|-----------------|-----------------|
| Air quality | Windows |
| Light quality | HVAC |
| Thermal comfort | Orientation |



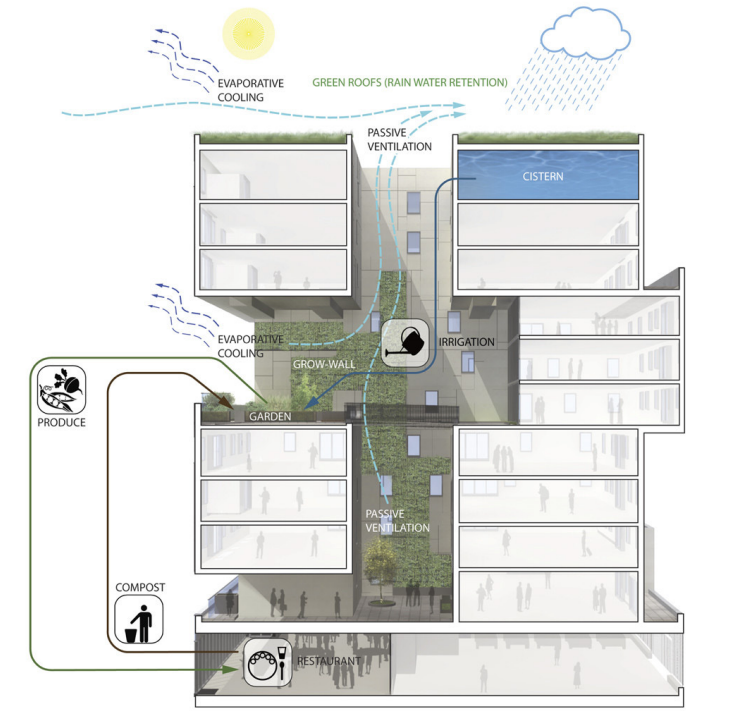
Pruitt-Igoe



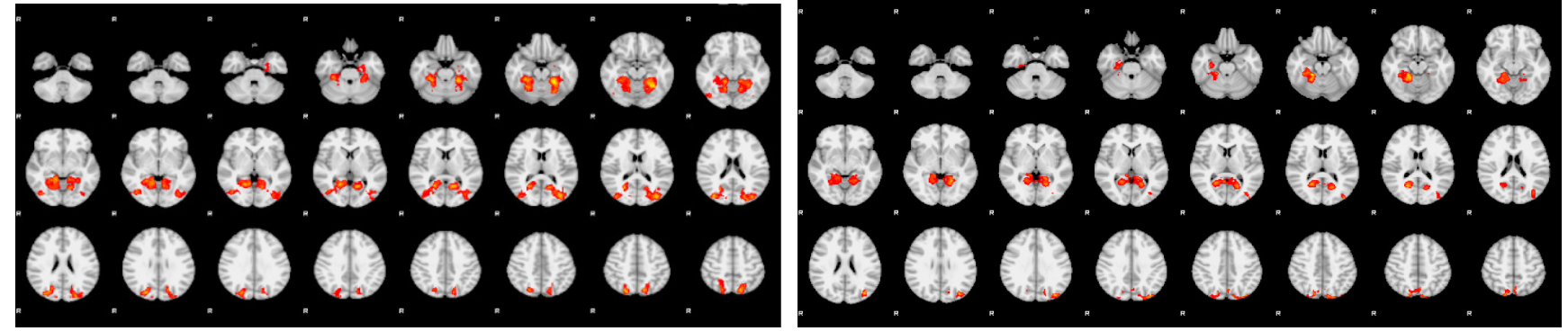
Via Verde, NY



Measures of stress levels between environments with and without natural elements.



60 Richmond Housing Cooperative, Toronto



Brain areas activated during exposure to environment without nature.

Brain areas activated during exposure to natural environments.

