

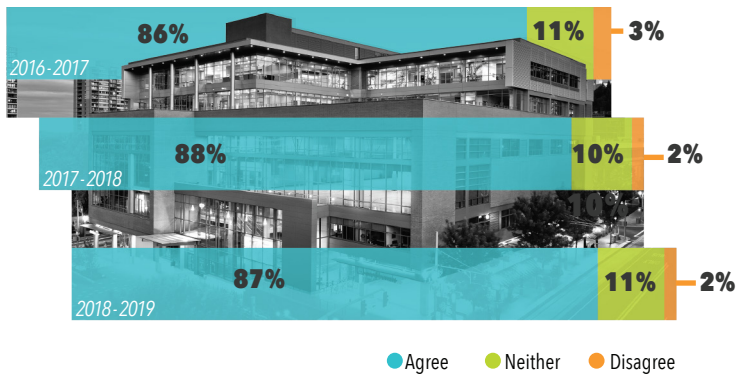
# PORTLAND STATE CAMPUS REC

Year to Year Member Survey Results | 2016 - 2019

Portland State Campus Rec takes pride in contributing to the wellbeing of our community as an established leader in collegiate recreation. In 2017, we created a five-year strategic plan to move us forward in achieving the following goals:

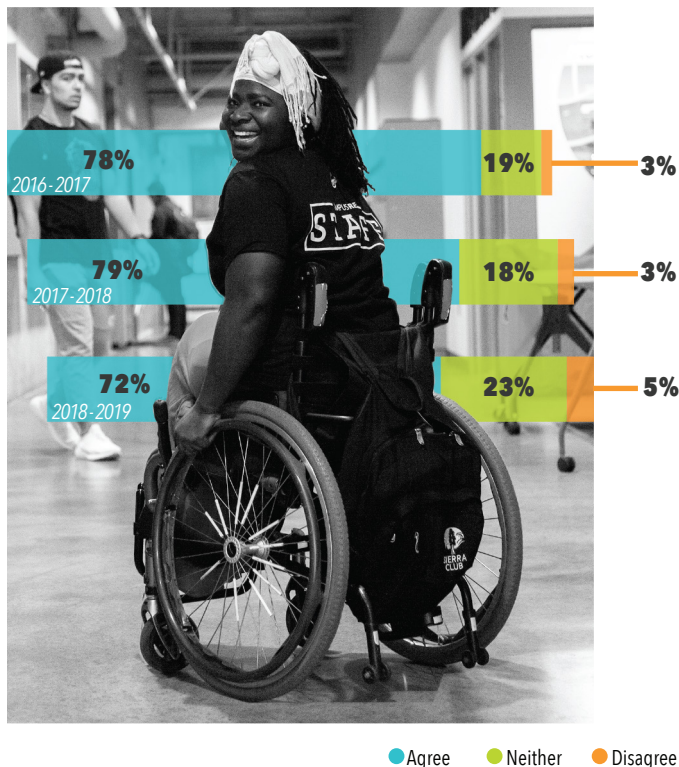
1. Elevate Student Success
2. Promote a Healthier Campus
3. Expand Our Commitment to Equity, Diversity & Inclusion
4. Operate Sustainably

## CAMPUS REC IS COMMITTED TO EQUITY, DIVERSITY AND INCLUSION.



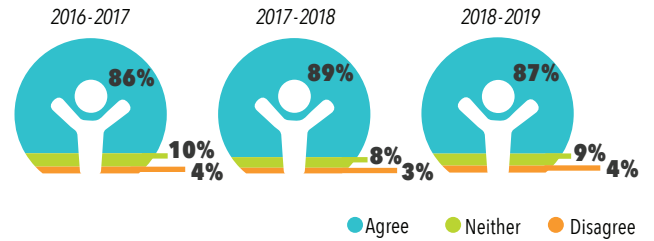
*"Campus Rec's staff, policies, and programs show me they are committed to equity, diversity, and inclusion."*

## CAMPUS REC MEETS THE DIVERSE NEEDS OF THE PORTLAND STATE COMMUNITY.

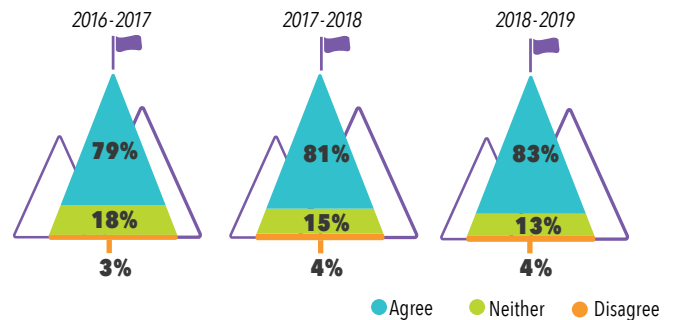


Member feedback provides critical information about how we are progressing toward these goals. For the last three years, we've distributed an annual survey to collect input from members in order to identify strengths and areas for improvement. Thank you to the Rec Center users who provided us with over 1,500 survey responses in three years. Your feedback has allowed us to make informed changes to our programming and facilities, and will help to shape Campus Rec now and in the future.

## CAMPUS REC CONTRIBUTES TO MY COMPLETE PHYSICAL, EMOTIONAL AND SOCIAL WELLBEING.



## PARTICIPATION IN CAMPUS REC CONTRIBUTES TO MY SUCCESS.

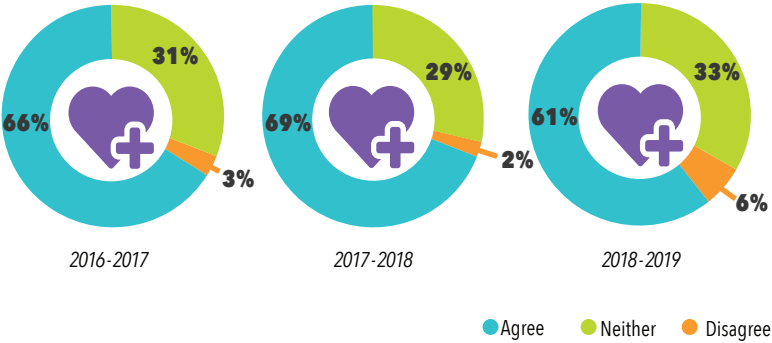


## CAMPUS REC HELPS TO CREATE A HEALTHY, HAPPY AND ENGAGED PORTLAND STATE COMMUNITY.

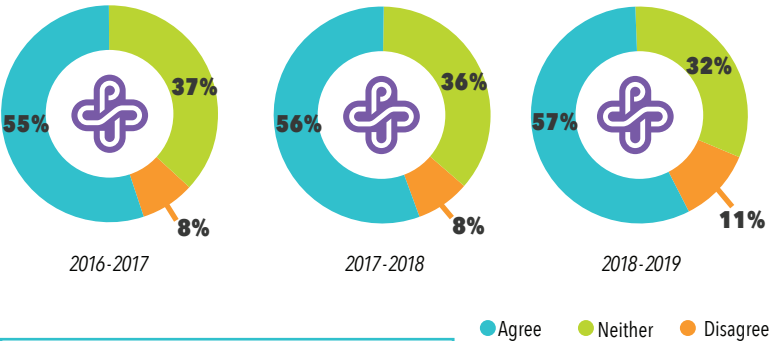


*"Campus Rec is the most important part of PSU for my mental and emotional health."*

CAMPUS REC PROMOTES ENVIRONMENTAL, SOCIAL, AND ECONOMIC SUSTAINABILITY.

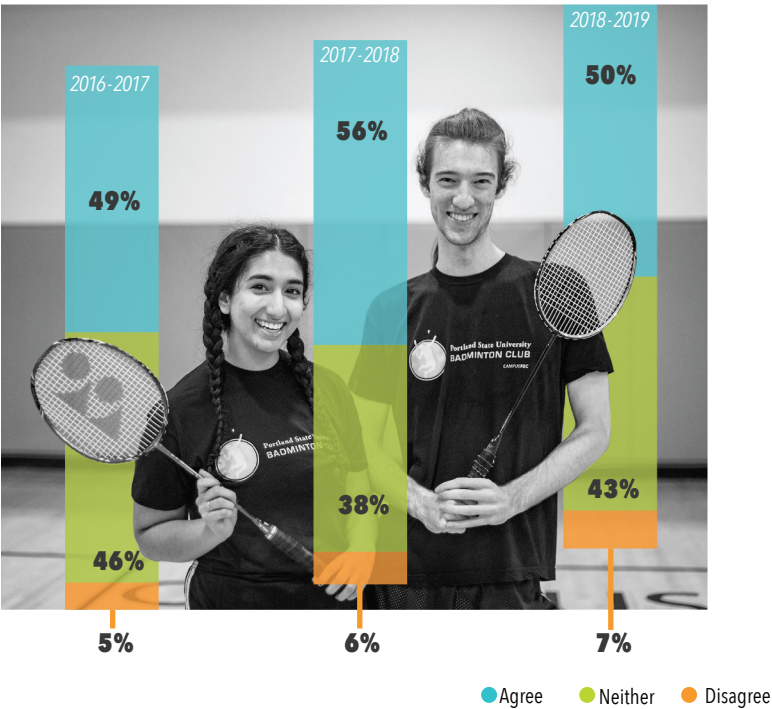


PARTICIPATION IN CAMPUS REC HAS PROVIDED ME WITH SKILLS/ABILITIES I WILL USE OUTSIDE OF PSU.



"I am inspired by the creative, inclusive events and considerations that Campus Rec takes (and the messaging around them everywhere I turn)."

PARTICIPATION IN CAMPUS REC INSPIRES ME TO BE AN AGENT OF POSITIVE SOCIAL CHANGE.



CAMPUS REC PROVIDES ME WITH AN OPPORTUNITY TO INTERACT WITH PEOPLE DIFFERENT THAN ME.



"The staff are among the most professional, knowledgeable, courteous and helpful that I have ever encountered in any rec center – thank you."

LOOKING FORWARD

Campus Rec's 2017-2021 strategic plan concludes in 2021. Our commitment to this process has laid a solid foundation for the future. As we renew our commitment to the PSU community, we are dedicating more time and resources toward assessment and understanding how to best serve you. Your feedback will help to guide our work as we look toward the next five years.