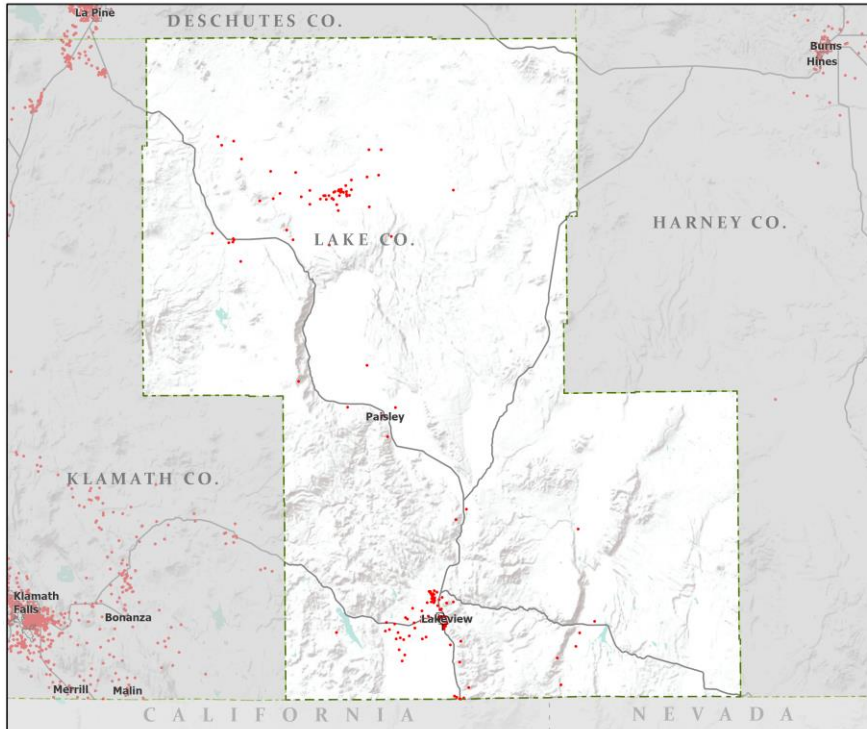


# Oregon Population Forecast Program

Proposed Coordinated Forecasts for Lake County, its  
Urban Growth Boundaries (UGBs), and the Area  
Outside UGBs

March 2022



- Counties
- Incorporated Cities
- Highways
- 2010 POPULATION
  - 1 Dot = 25 persons



Portland State University,  
Population Research Center,  
May 2021.  
[www.pdx.edu/prc](http://www.pdx.edu/prc)

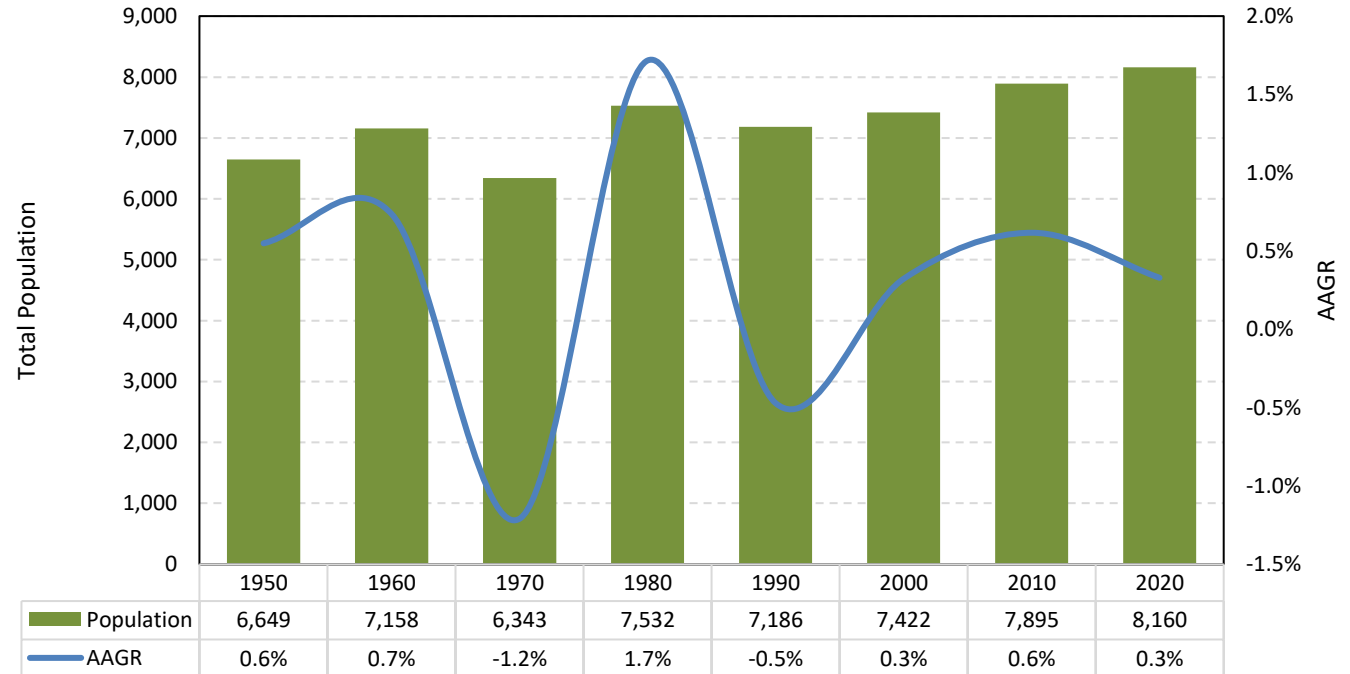
Sources: Esri, USGS, NOAA  
State of Oregon GEO;  
Oregon Dept. of  
Transportation.

# Lake County

# Proposed Forecast Results

*Lake County experienced the highest population growth in the 1980 Census, where the county showed an AAGR of 1.7% between 1970 and 1980. County population dropped and declined in the 1980s and returned to a growth afterwards. Recent Census showed a 0.3% AAGR.*

### Historical Census Population

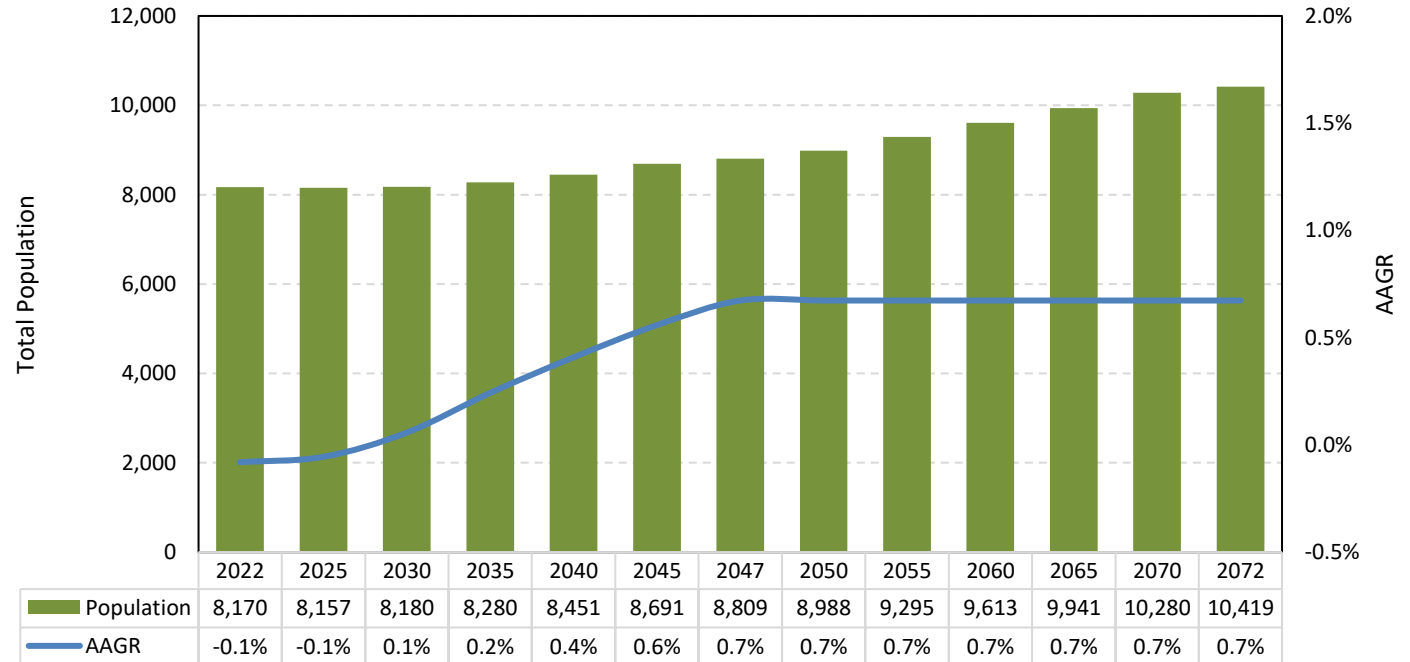


Source: US Census Bureau Decennial Census

# Proposed Forecast Results

*Lake County's population is projected to grow at a relatively slow pace prior to 2040. The growth rate is projected to increase after 2040.*

**Population Forecast (2022-2047)**

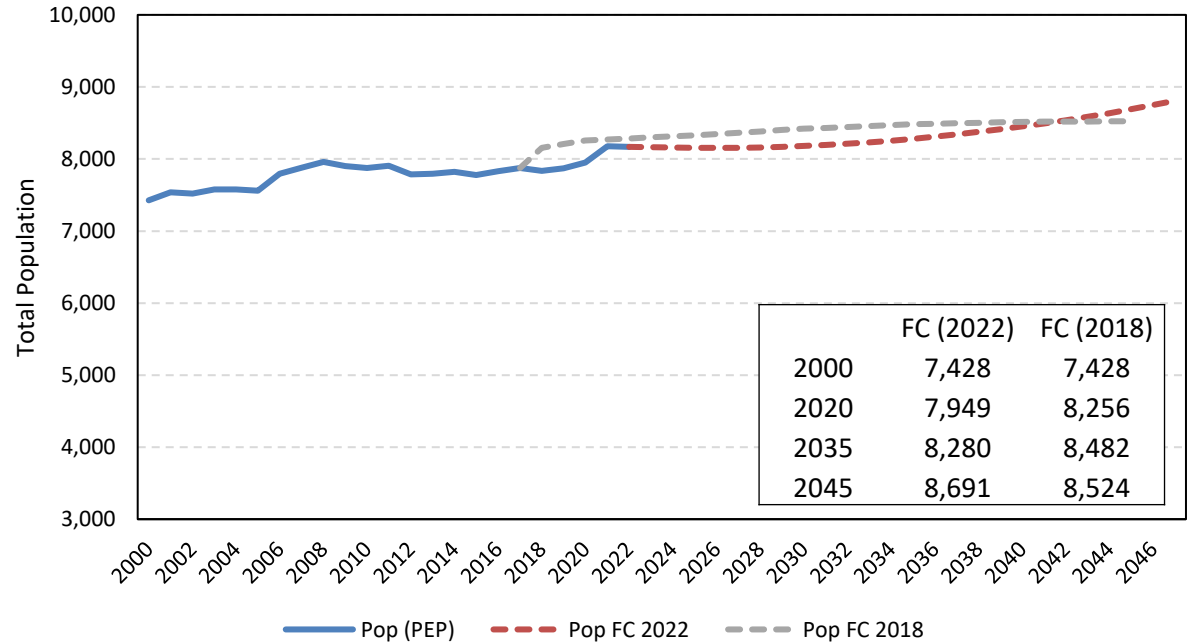


Source: Forecasted by Population Research Center (PRC)

# Proposed Forecast Results

*Compared to the 2018 forecast, the current forecast projects a lower population before 2040. After 2040, the current forecast projects a higher growth rate than the 2018 forecast. In 2045, the current forecast puts Lake County at 8,691 people while the 2018 forecast has 8,524 people.*

### Population Forecast Comparison

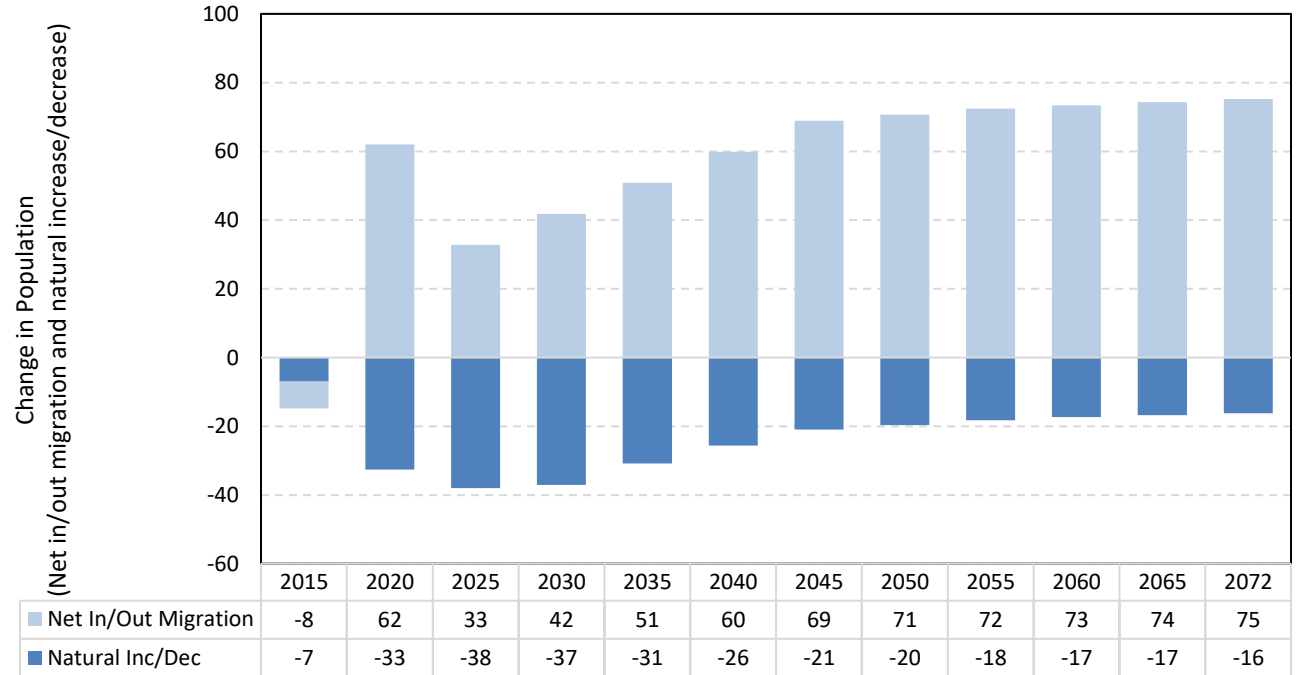


Source: US Census Bureau Population Estimates Program (PEP). Forecast by Population Research Center (PRC)  
Note: PEP estimates may be different from the 2020 Census.

# Proposed Forecast Results

*Natural decrease is projected to continue while net migration remains positive. Net migration is projected to be higher than natural decrease and thus, result in population growth. Natural decrease tends to decline over time.*

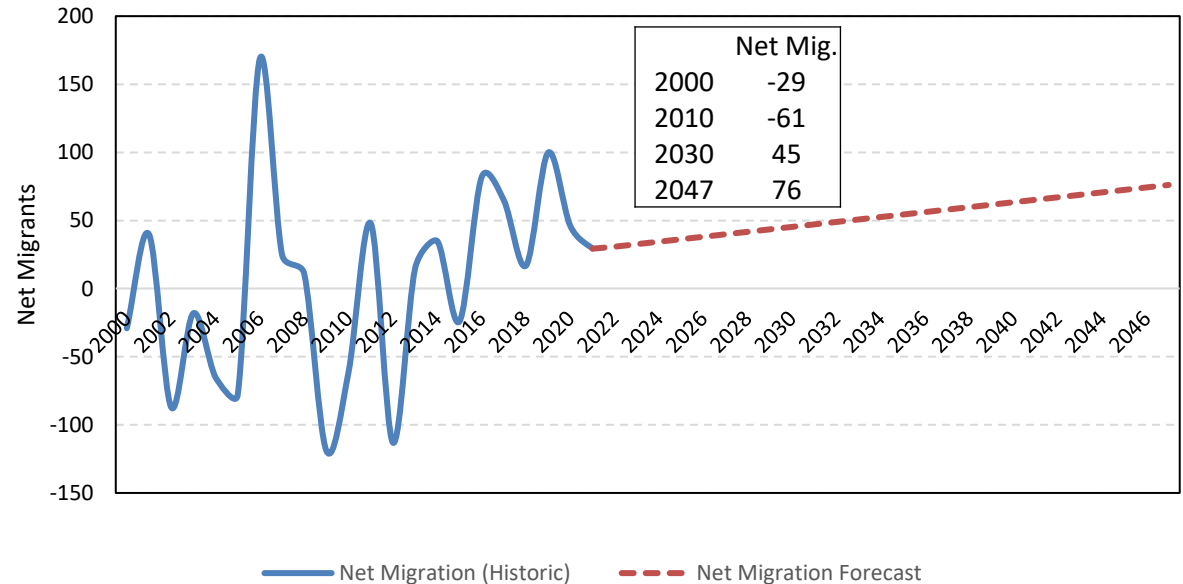
**Components of Population Change by 5-year Intervals (2015-2072)**



Source: Forecast by Population Research Center (PRC)

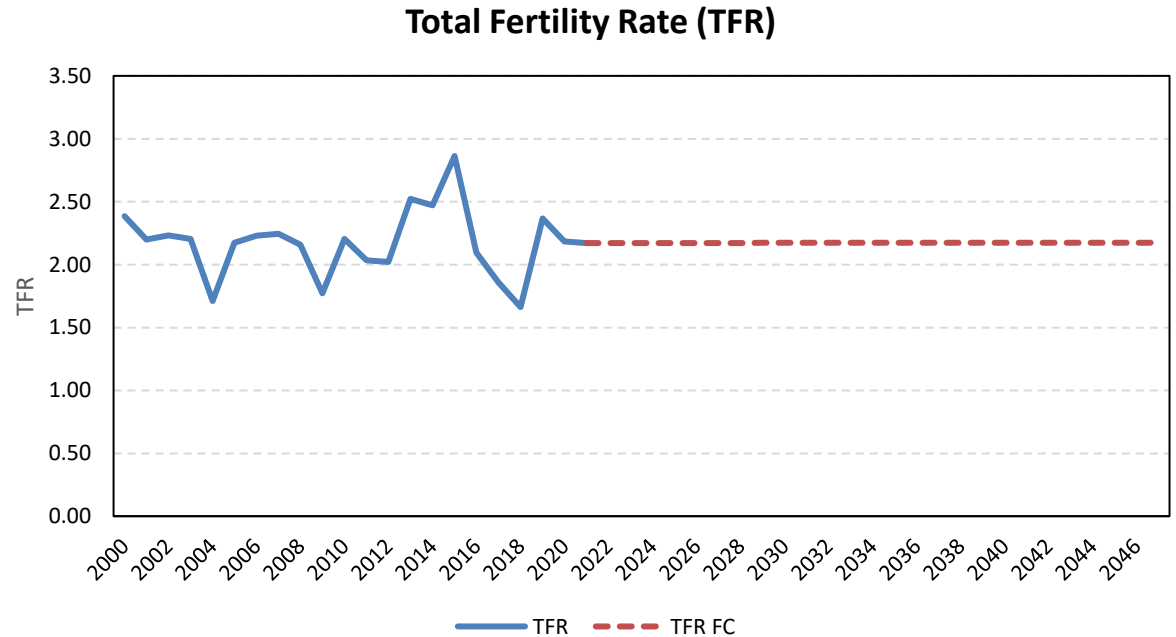
*Annual net migration has varied greatly in the county. The county reached a net migration peak in 2006 with 169 people. Recent trend shows that annual migration has maintained positive since 2016. It is likely that net migration would stay within this historic range and positive.*

### Annual Net Migration (2000-2047)



Sources: US Census Bureau. Forecast by Population Research Center (PRC).

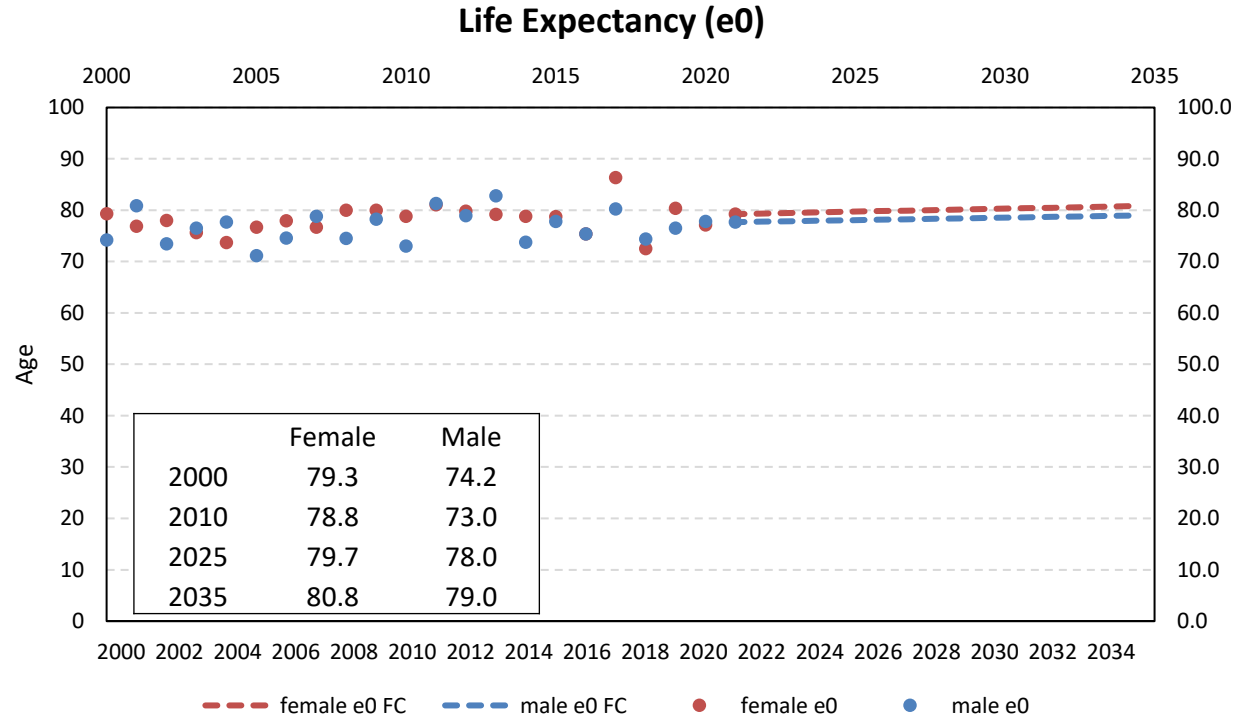
*The total fertility rate (TFR) for women aged 15-44 in the county is projected to be approximately 2.2 throughout the forecast period. The TFR has been above 2.0 in the past 10 years except for 2018. The relatively high TFR contributes to an increase in younger population.*



Sources: Oregon Health Authority, Center for Health Statistics. Calculations and forecast by Population Research Center (PRC).

# Historical and Forecast Trends

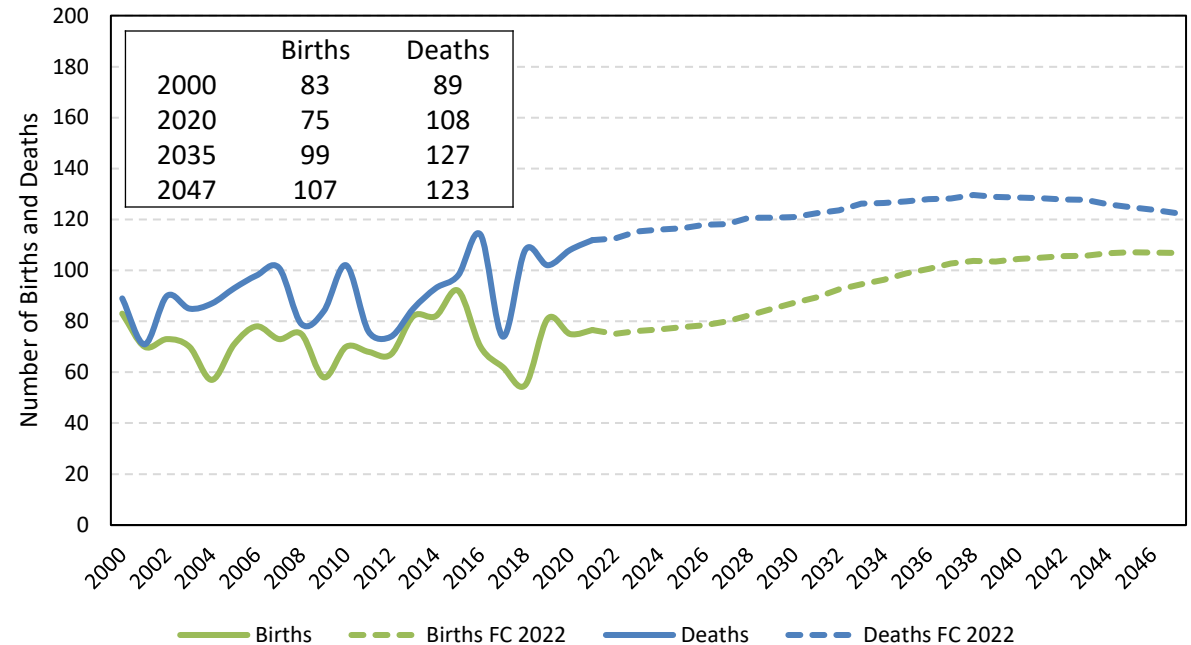
*Life expectancy for both male and female is projected to remain relatively constant throughout the forecast period. Life expectancies are projected to remain in the historic range.*



Sources: Oregon Health Authority, Center for Health Statistics. Calculations and forecast by Population Research Center (PRC).

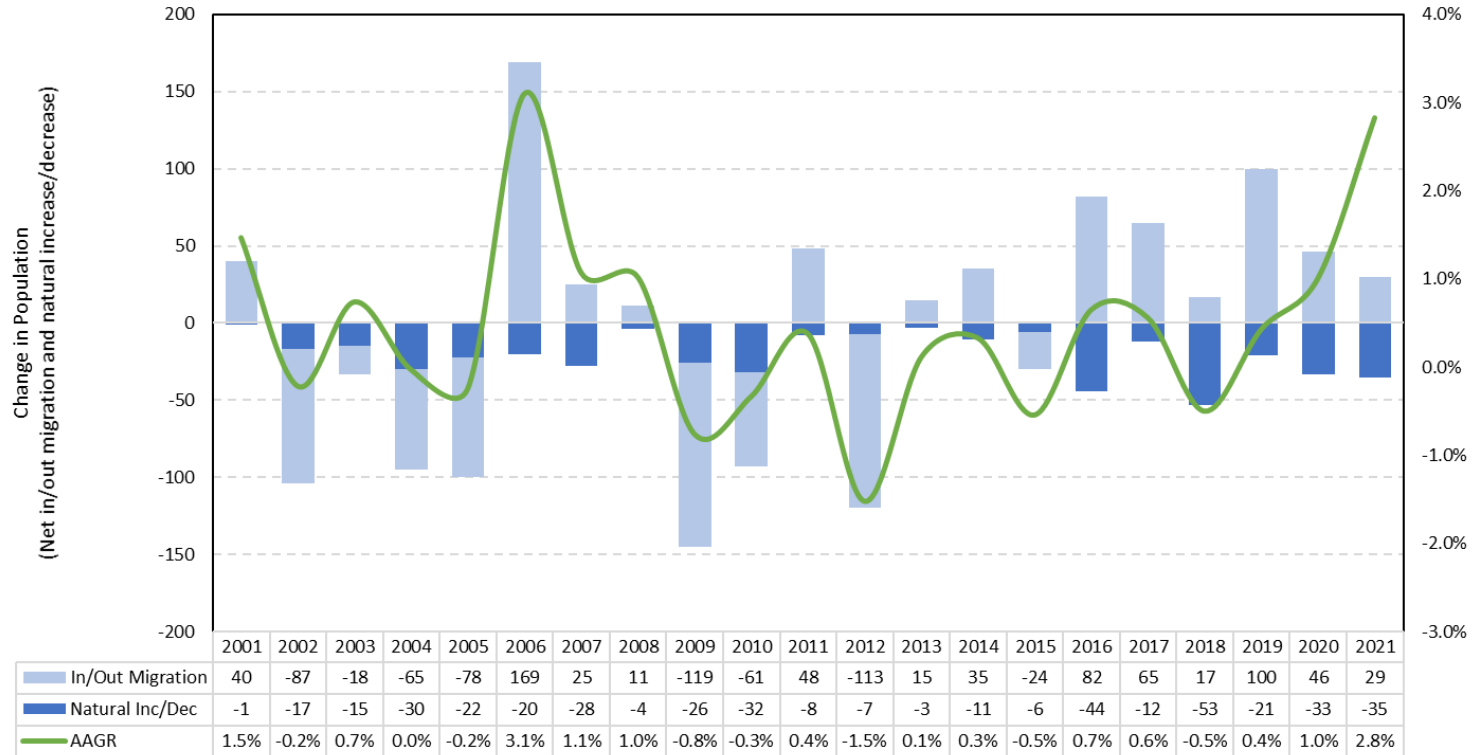
*Annual deaths are projected to continue to outnumber annual births. Annual births are projected to show an increase over time, mainly due to relatively high TFR and potential increase in population in the 30-40 years old age group through migration.*

**Historical and Forecast Annual Births and Deaths (2000-2047)**



Source: Oregon Health Authority, Center for Health Statistics. Forecast by Population Research Center (PRC)

**Components of Population Change and Average Annual Growth Rate (2001-2021)**

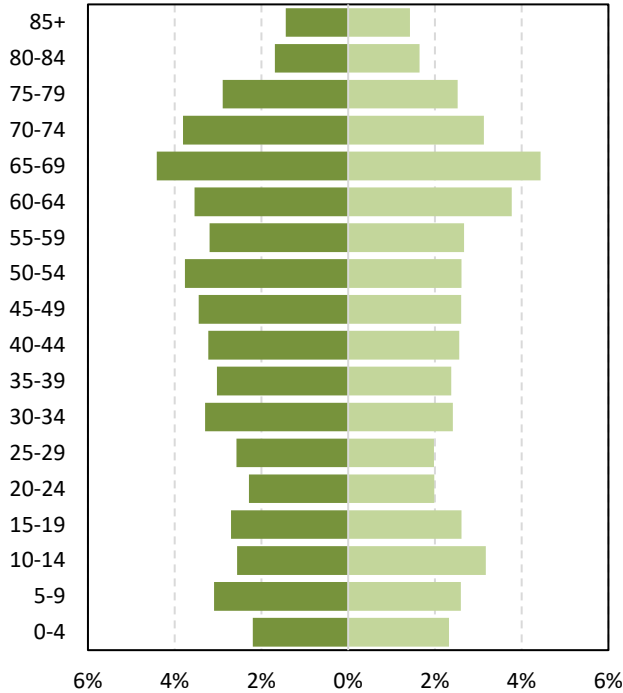


Sources: US Census Bureau. Oregon Health Authority (OHA). Calculated by Population Research Center (PRC)

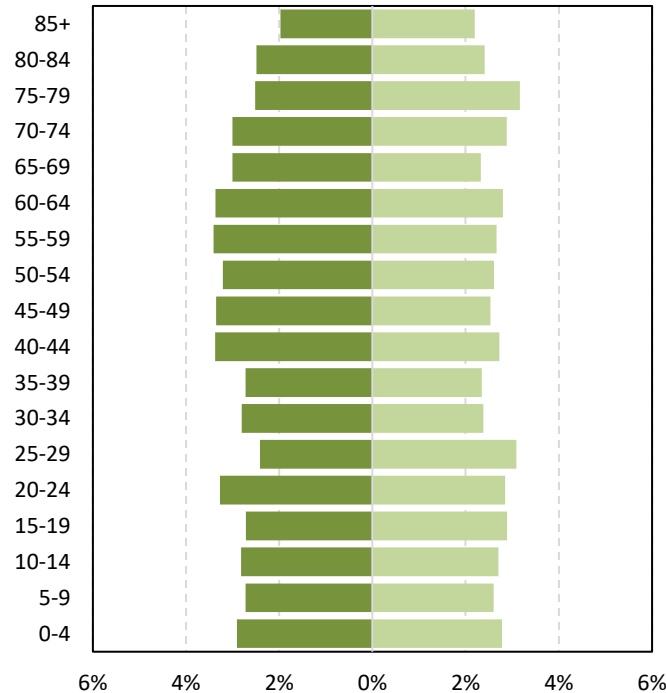
# Historical and Forecast Trends

## Population Age Structure

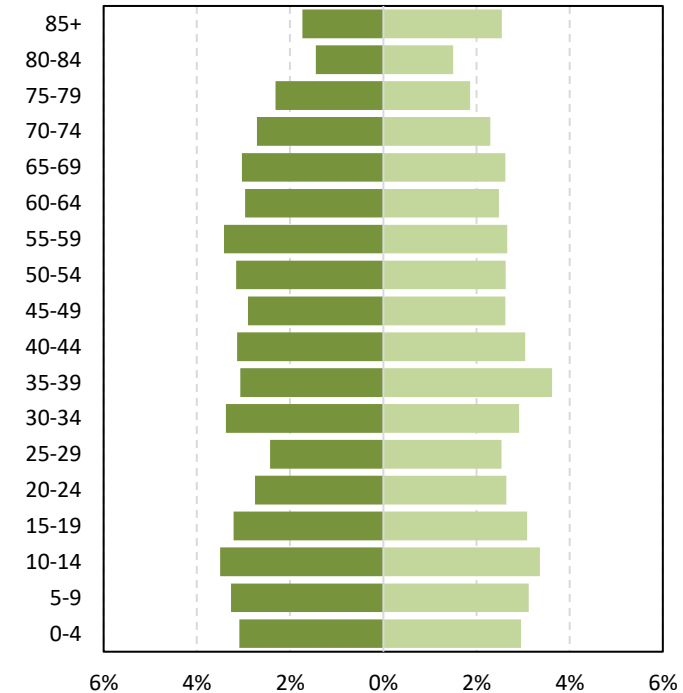
■ Male (2022) ■ Female (2022)



■ Male (2035) ■ Female (2035)



■ Male (2047) ■ Female (2047)



Source: Forecast by Population Research Center (PRC)

[Historical trend](#)

These numbers represent *Proposed* Forecast Results

# Historical and Forecast Trends

## Historical and Forecast Population for Lake County and its Sub-Areas

	Historical			Forecast				
	2010	2020	AAGR (2010-2020)	2022	2047	2072	AAGR (2022-2047)	AAGR (2047-2072)
<b>Lake County</b>	7,895	8,160	0.3%	8,170	8,809	10,419	0.3%	0.7%
Lakeview	3,320	3,543	0.6%	3,541	3,679	4,151	0.2%	0.5%
Paisley	256	248	-0.3%	255	289	335	0.5%	0.6%
<b>Outside</b>	4,319	4,369	0.1%	4,374	4,841	5,933	0.4%	0.8%

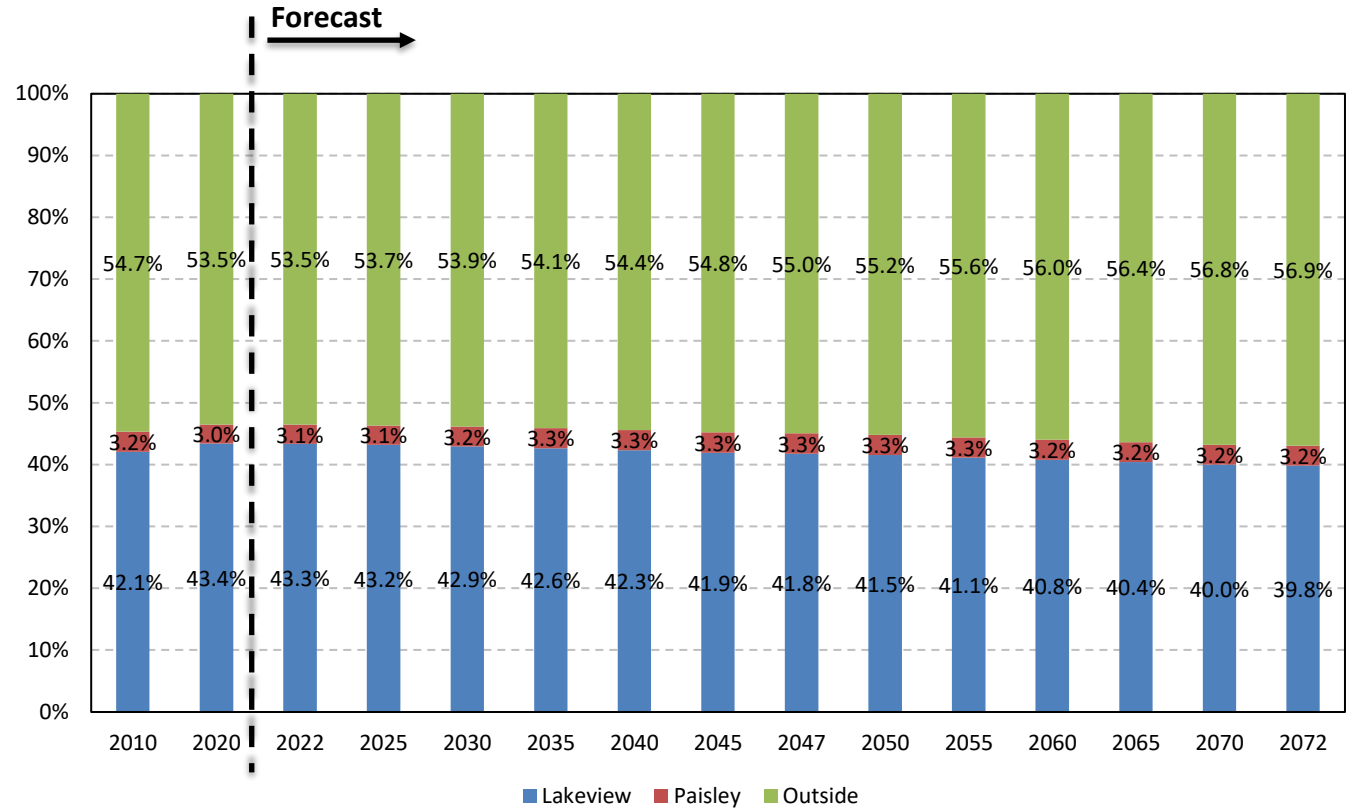
*Note: UGBs are indicated by their city names. Larger sub-areas are those with populations over 8,000 in 2020.*

Sources: U.S. Census Bureau; Forecast by Population Research Center (PRC)

# Proposed Forecast Results

## Lake County – Population Shares of Sub-Areas and Outside UGBs

*This figure shows the percentage of the county population that is in each group of sub-areas. Over time, the share of population outside the UGBs is projected to increase, reaching 57% in 2072. Paisley is projected to maintain its share of population. Lakeview may see a slight decline in shares.*



Sources: U.S. Census Bureau; Forecast by Population Research Center (PRC).  
 Note: Sub-areas with populations under 8,000 in 2020 were considered smaller UGBs

# Proposed Forecast Results

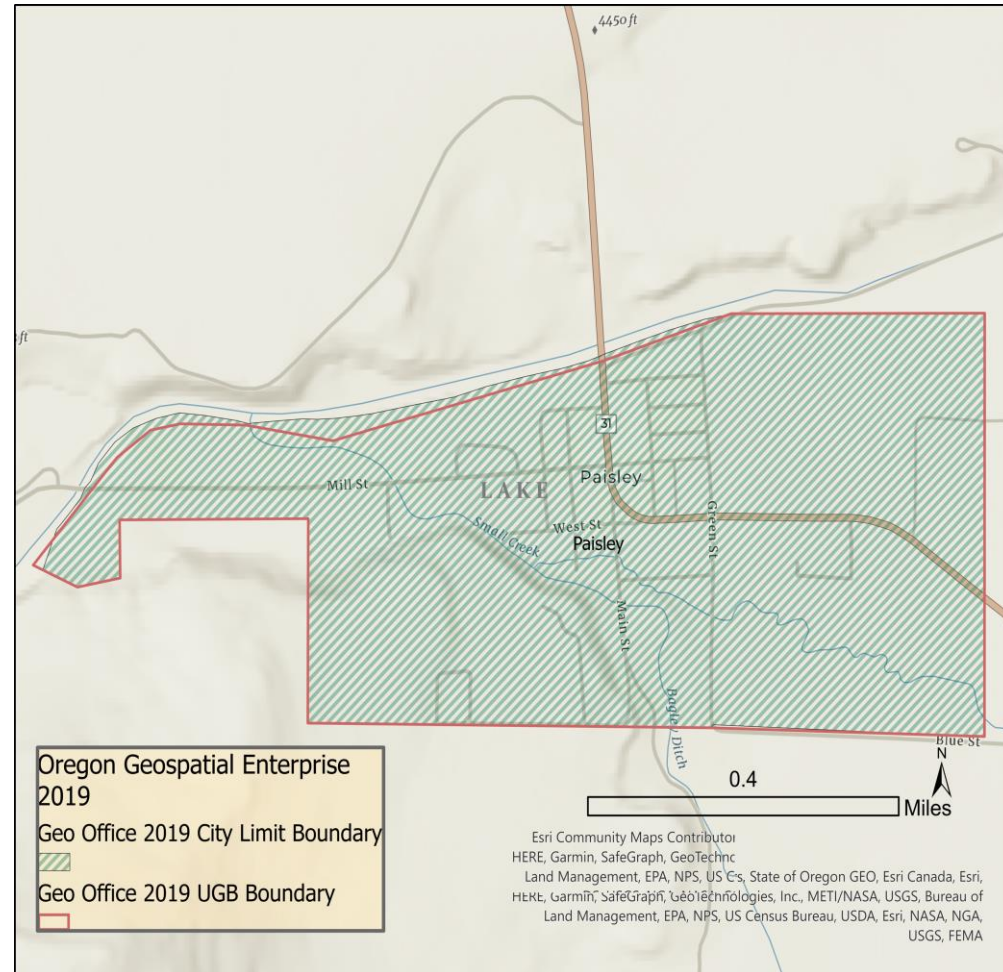
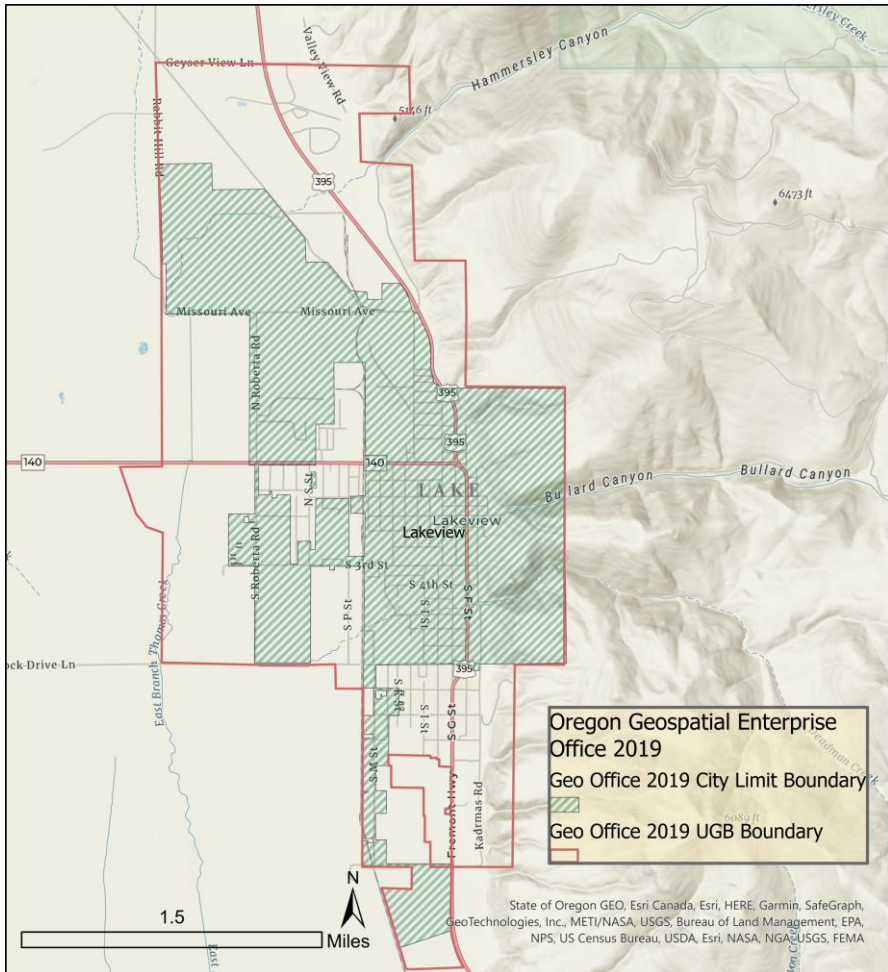
## Population Distribution in Smaller Sub-Areas

	Population			Share of County Population		
	2022	2047	2072	2022	2047	2072
<b>Lake County</b>	8,170	8,809	10,419			
Lakeview	3,541	3,679	4,151	43.3%	41.8%	39.8%
Paisley	255	289	335	3.1%	3.3%	3.2%
<b>Outside UGB</b>	4,374	4,841	5,933	53.5%	55.0%	56.9%

*Note: Smaller sub-areas refer to those with populations under 8,000 in 2020.*

Sources: Forecast by Population Research Center (PRC)

# Proposed Forecast Results



These numbers represent *Proposed* Forecast Results

1. We expect Lake County's population to grow over time at a rate that is higher than current data. This could be associated with the changing population age structure and the relatively high TFR in the county.
2. Annual net migration is expected to increase gradually over time, reaching 76 in 2047.
3. Both annual births and deaths are projected to increase, but annual deaths are projected to continue to outnumber births.
4. The population ages forward over time, with the oldest age group account for a larger share of population. The youngest age groups also indicate a slight increase in shares in 2047.
5. The overall county-wide population is projected to grow, but the population share in the Lakeview UGB may see a decline in shares. The Paisley UGB is projected to maintain its population share in the forecast.



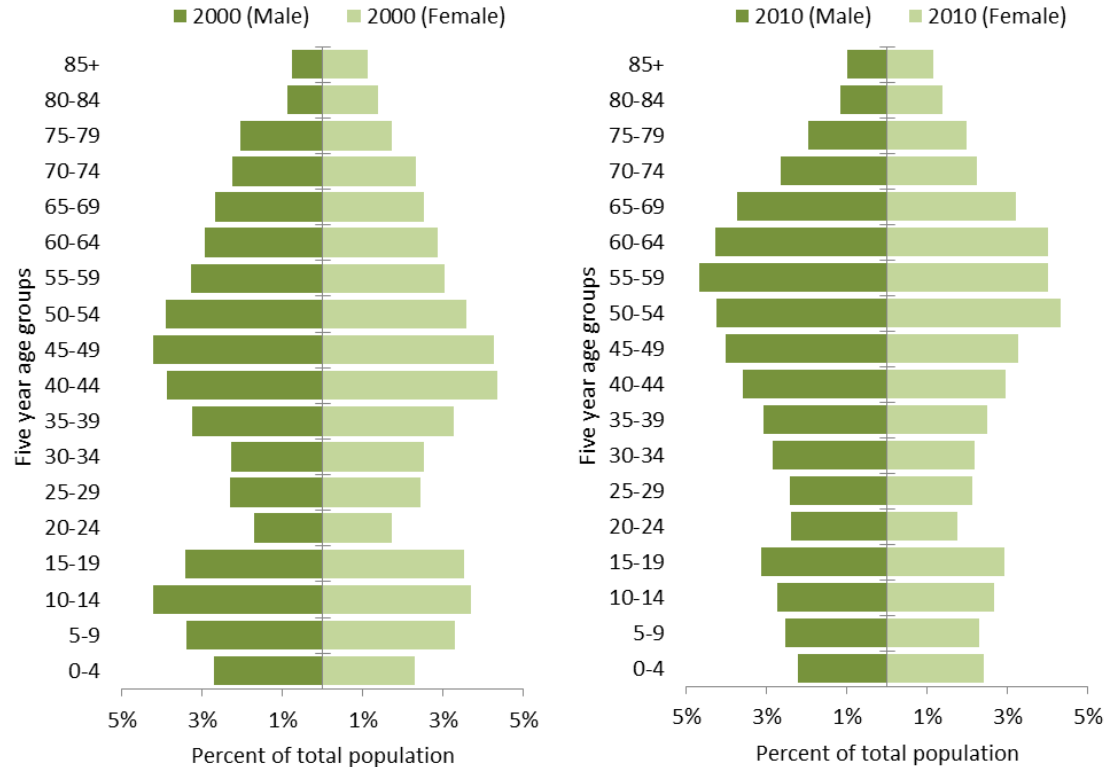
## Race and ethnicity breakdown in 2010 and 2020

Hispanic or Latino and Race	2010		2020		Absolute Change	Relative Change
<b>Total Population</b>	7,895		8,160		265	3.4%
<b>Hispanic or Latino (of any race)</b>	545	6.9%	802	9.8%	257	47.2%
<b>Not Hispanic or Latino</b>	7,350	93.1%	7,358	90.2%	8	0.1%
<b>White alone</b>	6,875	87.1%	6,508	79.8%	-367	-5.3%
<b>Black or African American alone</b>	37	0.5%	49	0.6%	12	32.4%
<b>American Indian and Alaska Native alone</b>	149	1.9%	114	1.4%	-35	-23.5%
<b>Asian alone</b>	44	0.6%	52	0.6%	8	18.2%
<b>Native Hawaiian and Other Pacific Islander alone</b>	5	0.1%	10	0.1%	5	100.0%
<b>Some Other Race alone</b>	7	0.1%	42	0.5%	35	500.0%
<b>Two or More Races</b>	233	3.0%	583	7.1%	350	150.2%

Sources: US Census Bureau, 2010 and 2020 Decennial Census

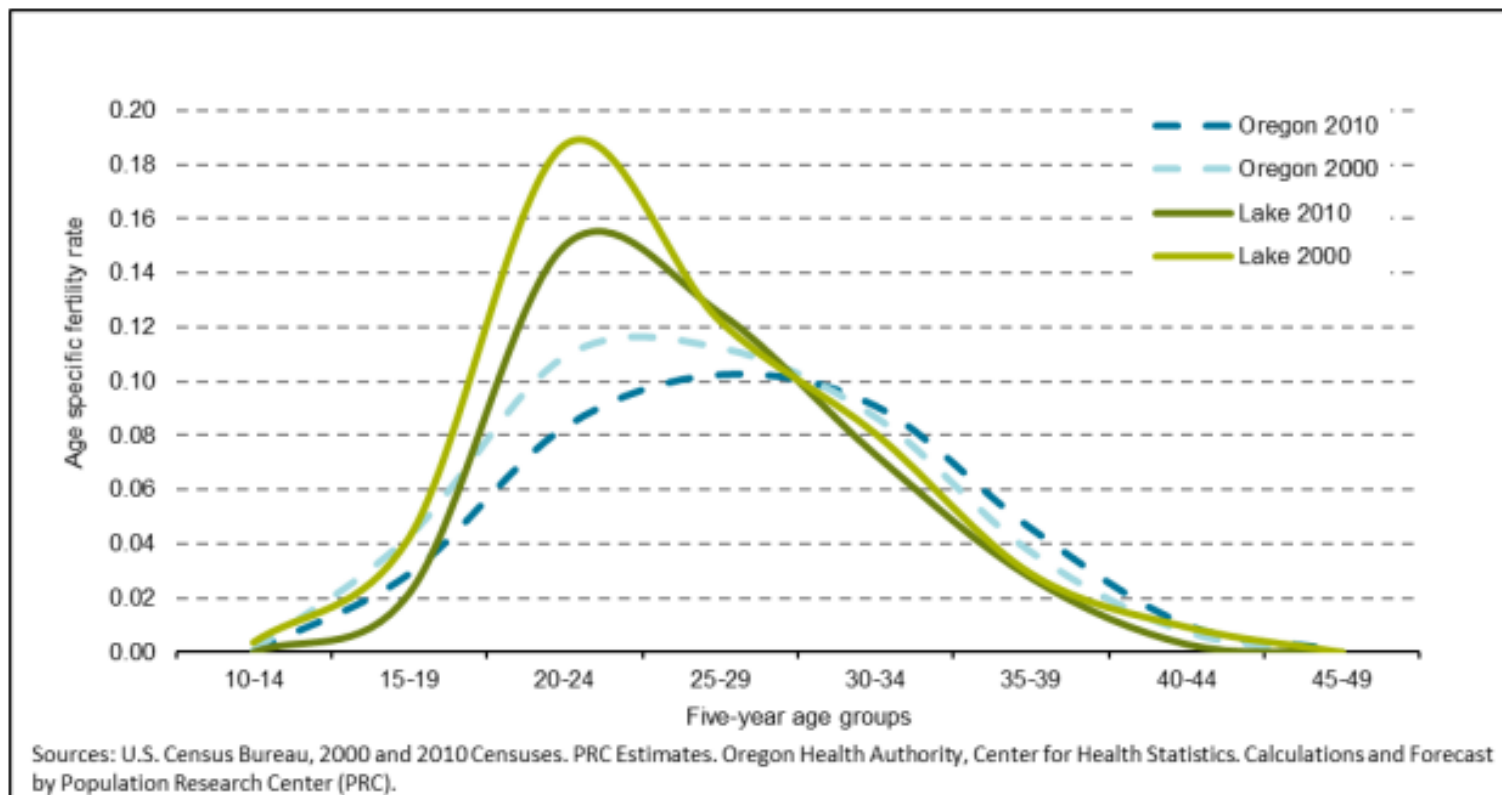
# Additional Historical Trends

*These two age pyramids show the population from the 2000 and 2010 Census. Over time, the population ages forward. The older population accounts for an increasing share of the total population while the share of younger populations decreased.*

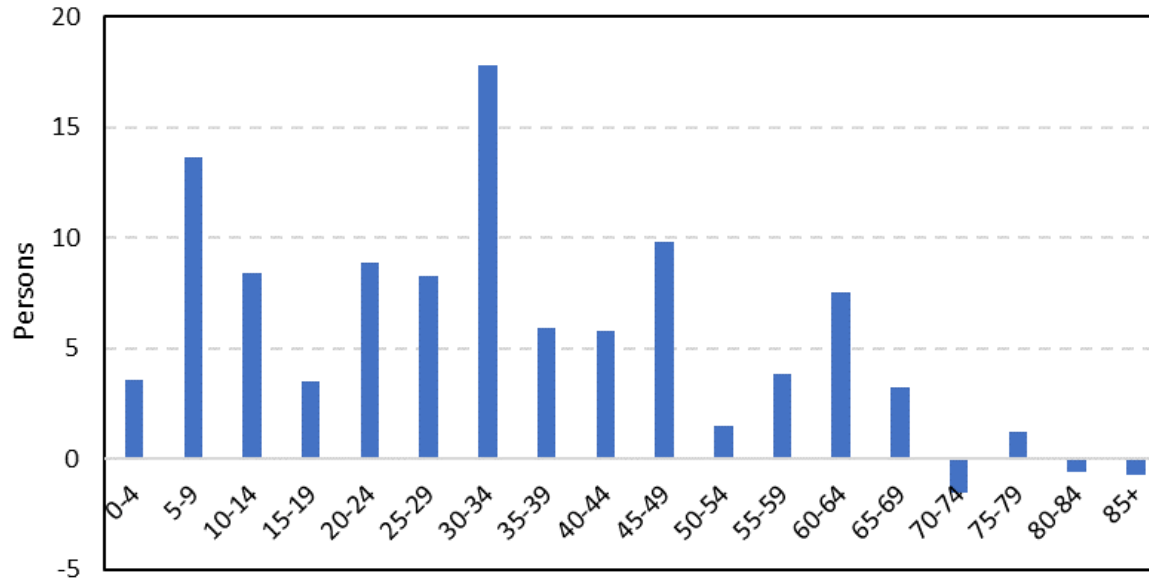


Sources: US Census Bureau, 2000 and 2010 Decennial Census

## State and county level age-specific fertility rates



## Number of Net Migration by Age (2019)



Sources: US Census Bureau PEP and ACS. Internal Revenue Service. Calculated by Population Research Center (PRC)