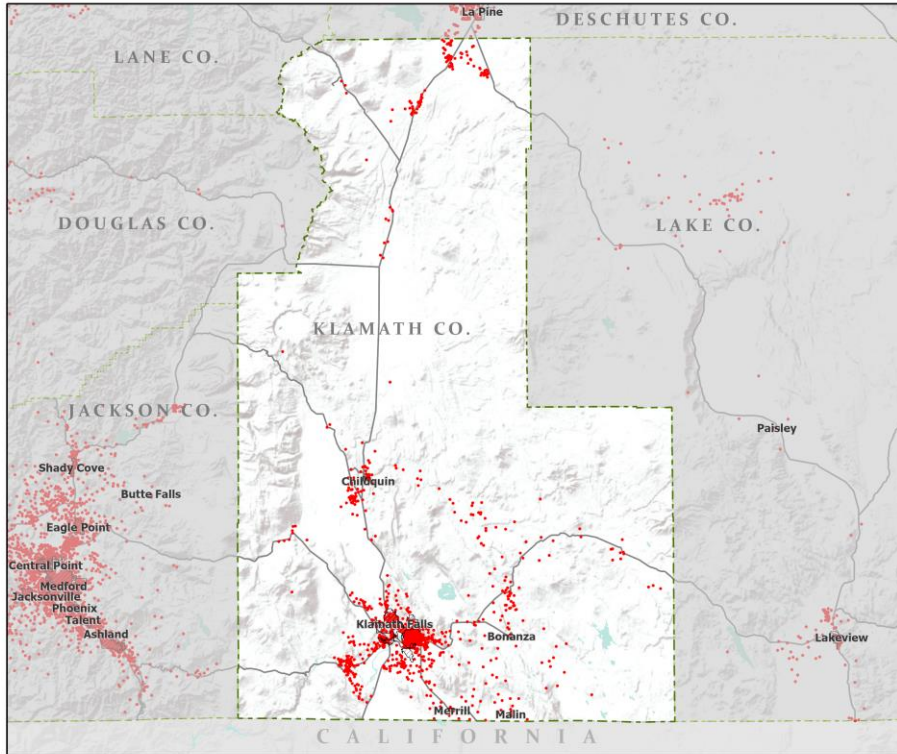
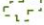





Oregon Population Forecast Program

Proposed Coordinated Forecasts for Klamath County,
its Urban Growth Boundaries (UGBs), and the Area
Outside UGBs

March 2022



-  Counties
-  Incorporated Cities
-  Highways
- 2010 POPULATION
-  1 Dot = 25 persons

Klamath County



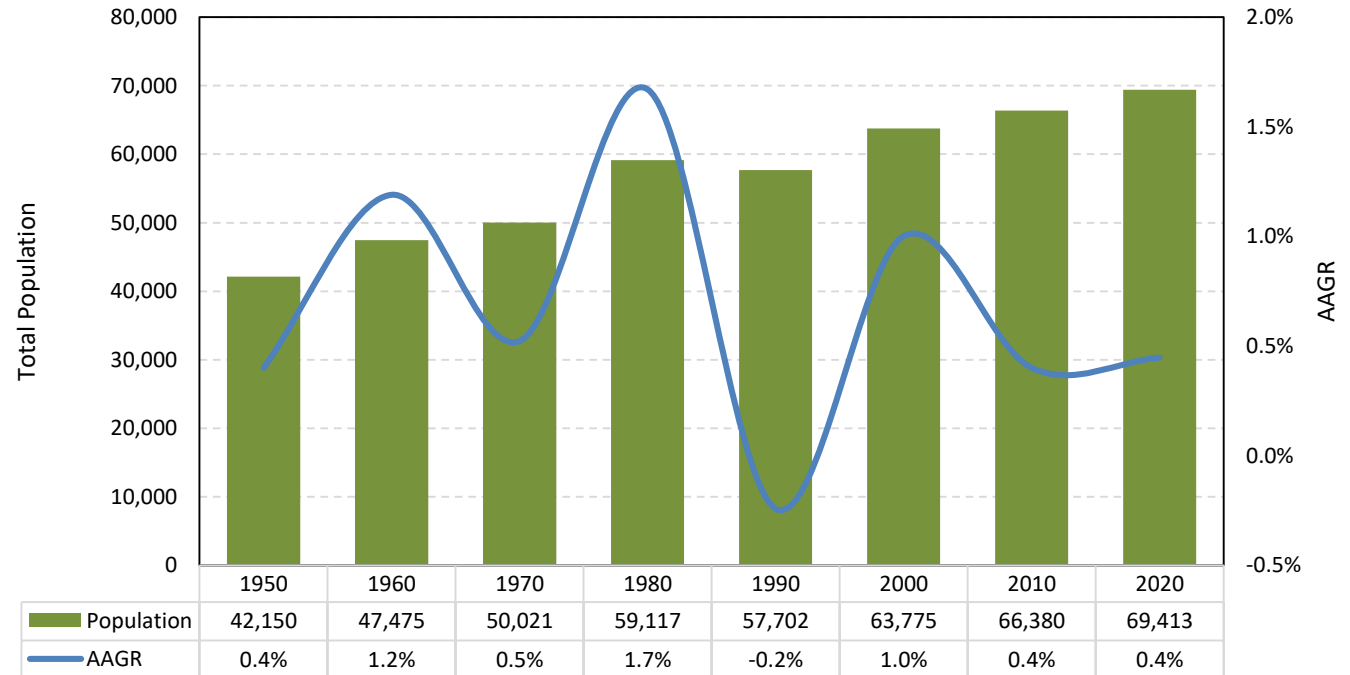
Portland State University,
Population Research Center,
May 2021.
www.pdx.edu/prc

Sources: Esri, USGS, NOAA
State of Oregon GEO;
Oregon Dept. of
Transportation.

Proposed Forecast Results

Klamath County experienced the highest population growth in the 1980 Census, where the county showed an AAGR of 1.7% between 1970 and 1980. County population decreased slightly in the 1980s and then returned to a positive growth. The AAGR for the past 20 years was 0.4%.

Historical Census Population

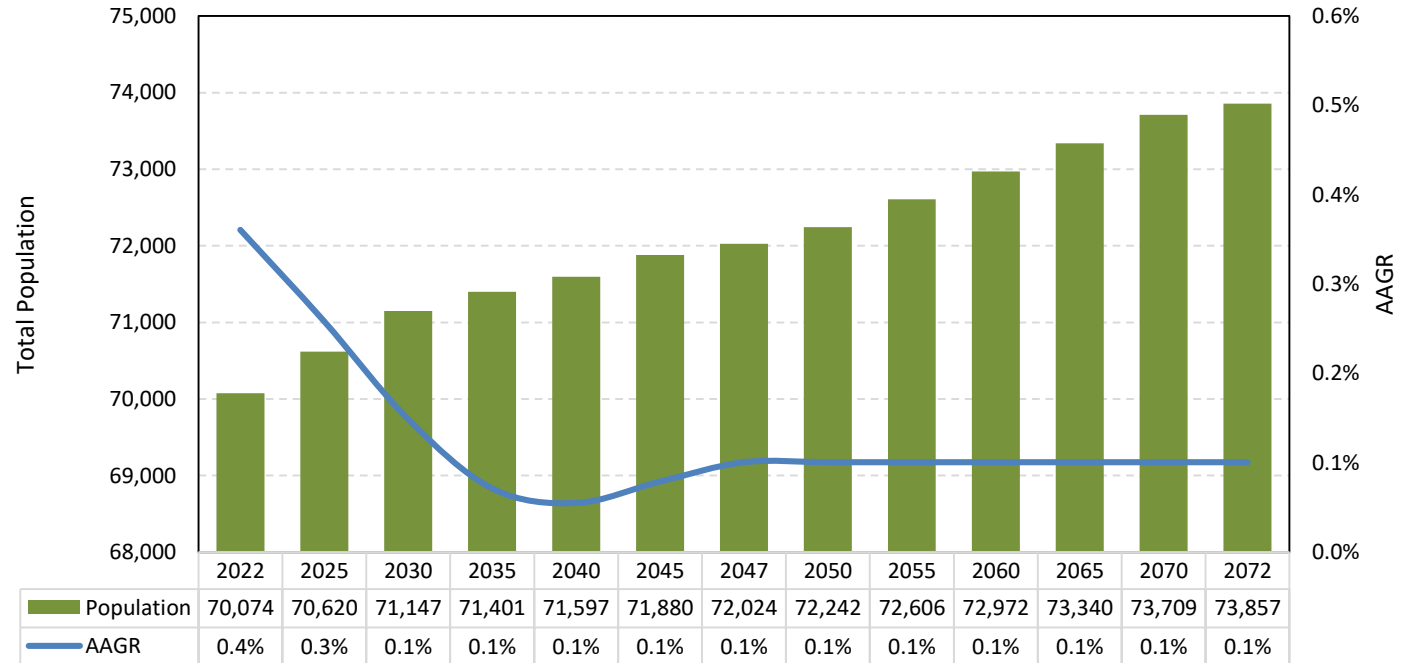


Source: US Census Bureau Decennial Census

Proposed Forecast Results

Klamath County's population is projected to grow gradually. The 0.1% AAGR is projected to maintain during most of the years. By 2072, the total population is projected to reach 73,857.

Population Forecast (2022-2047)

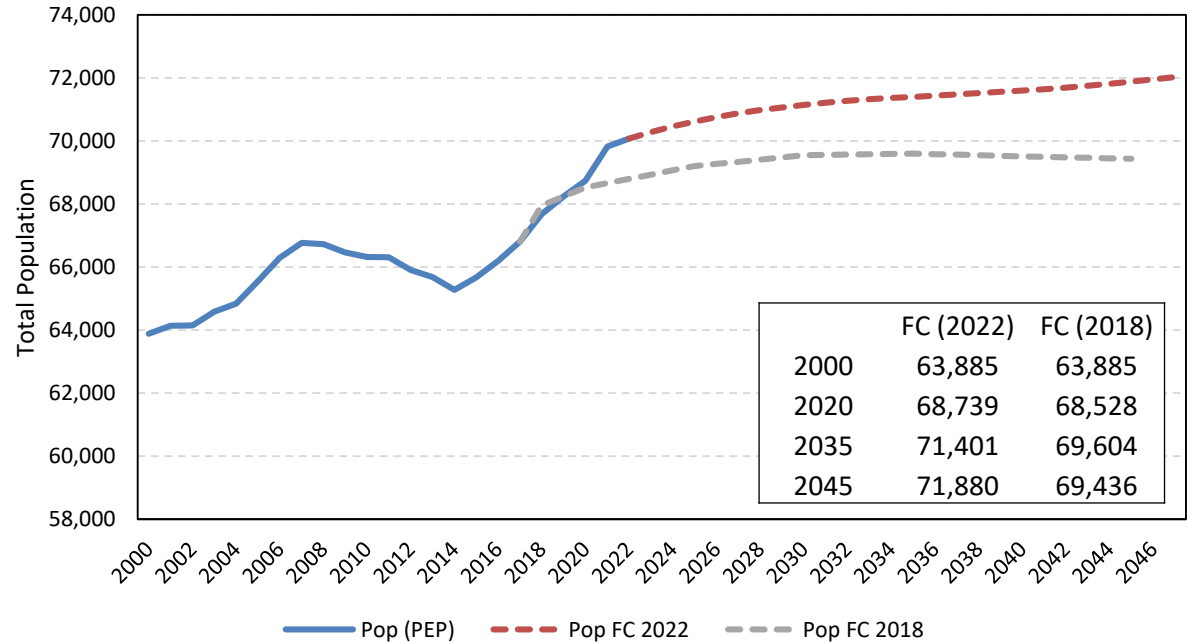


Source: Forecasted by Population Research Center (PRC)

Proposed Forecast Results

The current forecast is higher than that of the 2018 forecast. The current forecast puts Klamath County's population at 71,880 in 2045, compared to 69,436 in the 2018 forecast. This is 3.5% higher than the previous forecast.

Population Forecast Comparison

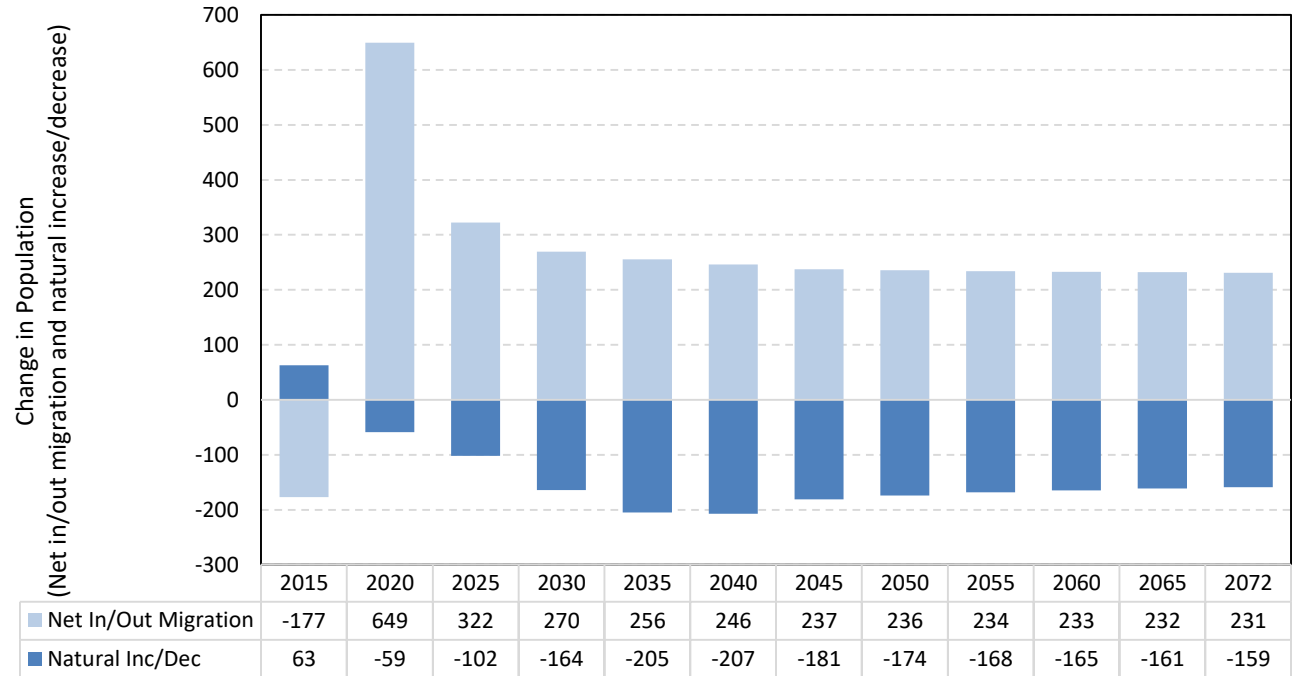


Source: US Census Bureau Population Estimates Program (PEP). Forecast by Population Research Center (PRC)
Note: PEP estimates may be different from the 2020 Census.

Proposed Forecast Results

Natural decrease is projected to continue while net migration remains positive. Net migration is projected to be higher than natural decrease and thus, result in population growth.

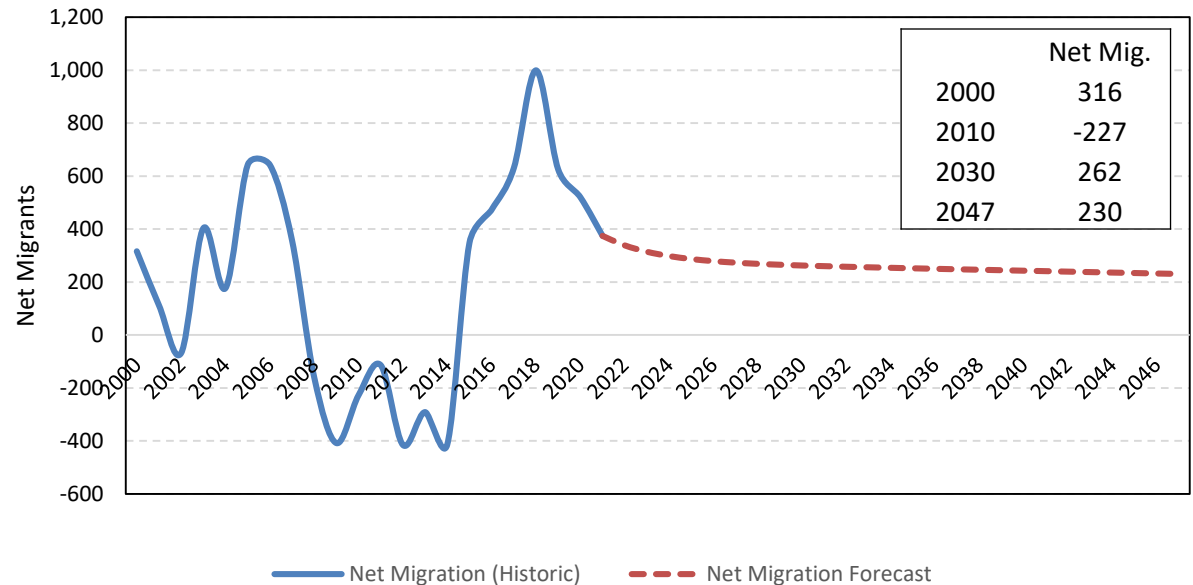
Components of Population Change by 5-year Intervals (2015-2072)



Source: Forecast by Population Research Center (PRC)

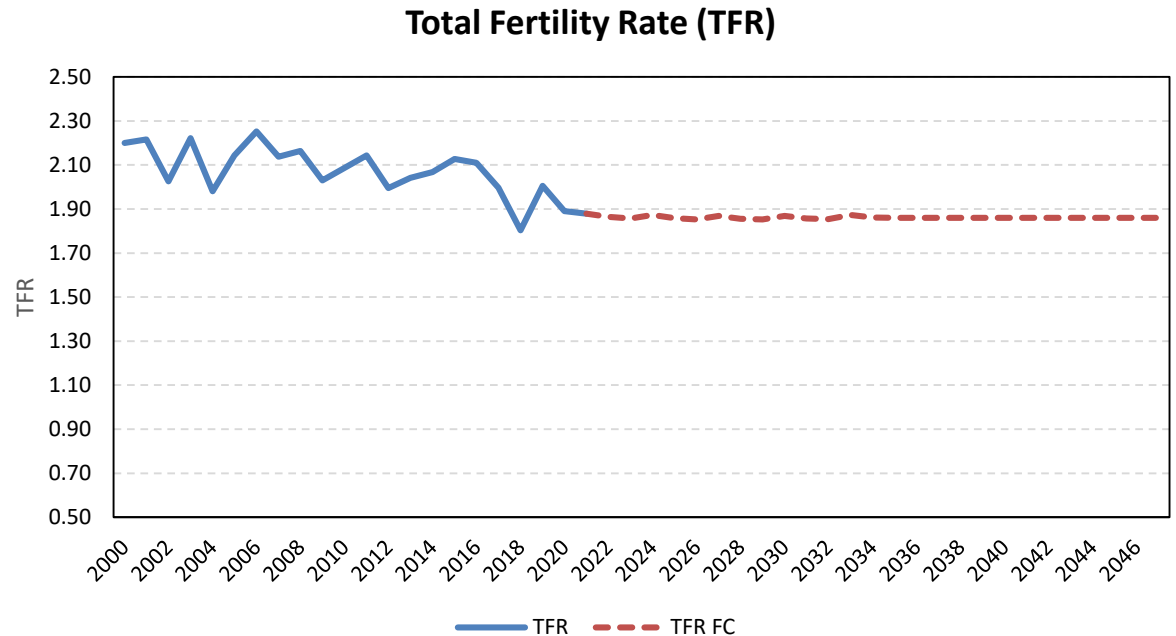
Annual net migration was relatively robust prior to 2008 but became negative afterwards. Net migration has shown a recovery since 2015 and reached a peak of 999 in 2018.

Annual Net Migration (2000-2047)



Sources: US Census Bureau. Forecast by Population Research Center (PRC).

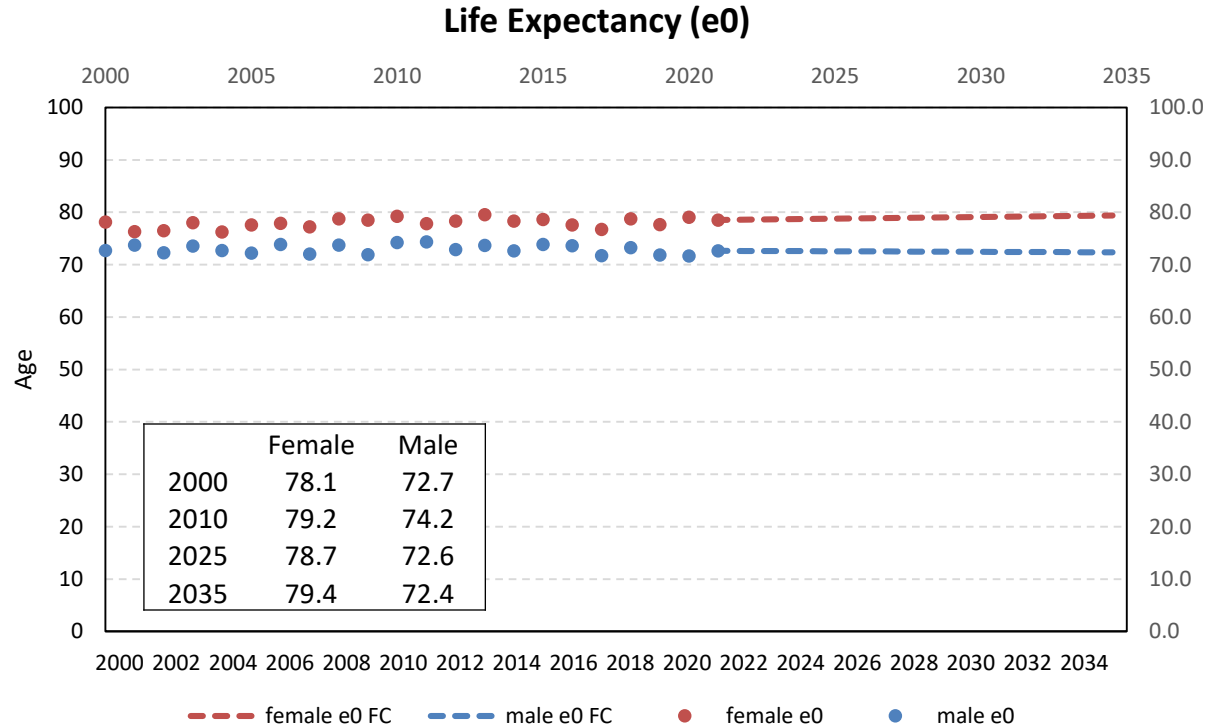
The total fertility rate (TFR) for women age 15-44 in the county is projected to be approximately 1.9 throughout the forecast period. The TFR has mostly been above 2.0 in the past but dropped to 1.8 in 2018.



Sources: Oregon Health Authority, Center for Health Statistics. Calculations and forecast by Population Research Center (PRC).

Historical and Forecast Trends

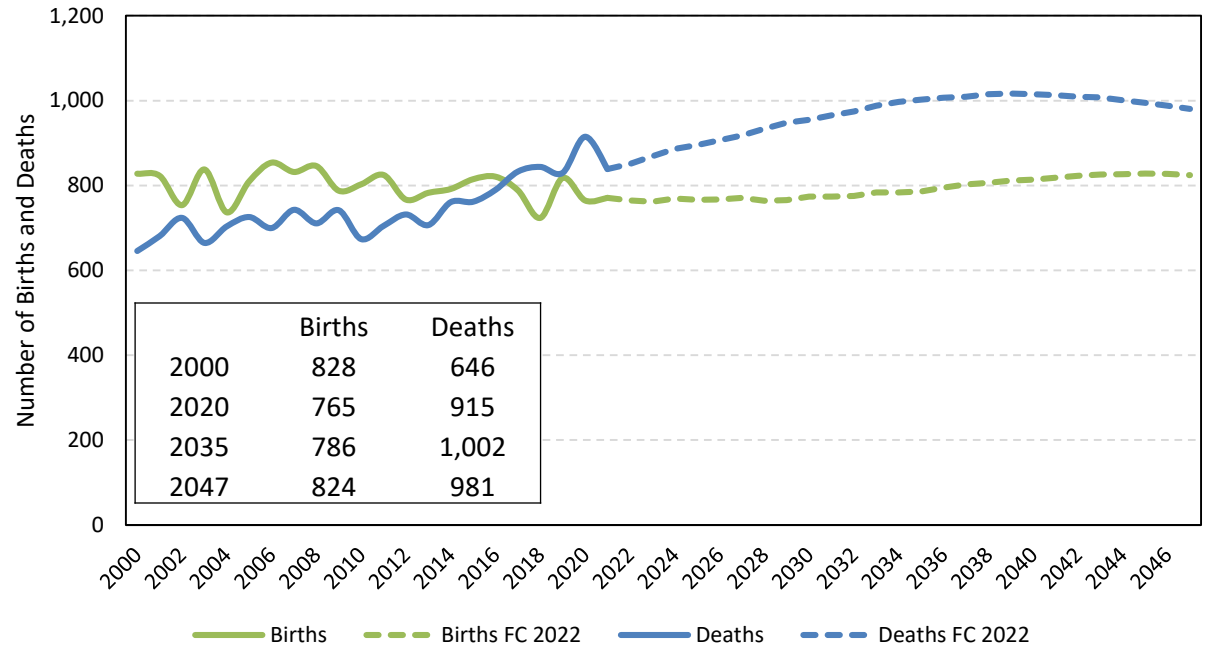
Life expectancy for female is expected to increase over time, reaching 79.4 in 2035. Life expectancy for male displays a slight declining trend, but maintains in the historic range.



Sources: Oregon Health Authority, Center for Health Statistics. Calculations and forecast by Population Research Center (PRC).

Annual deaths started to pass annual births in 2016 and are projected to continue the trend in the forecast. Annual births increases slightly as well, but at a lower rate.

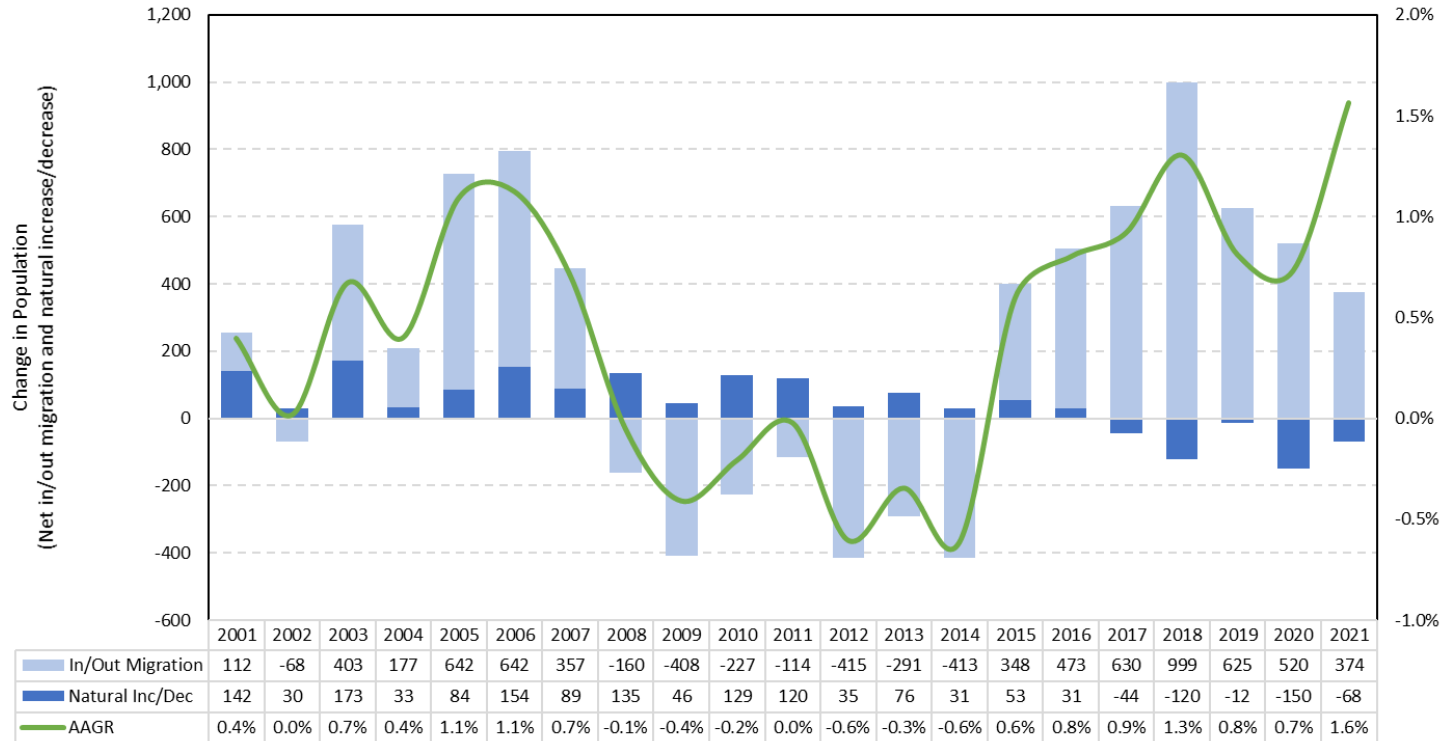
Historical and Forecast Annual Births and Deaths (2000-2047)



Source: Oregon Health Authority, Center for Health Statistics. Forecast by Population Research Center (PRC)

Additional Historical Trends

Components of Population Change and Average Annual Growth Rate (2001-2021)

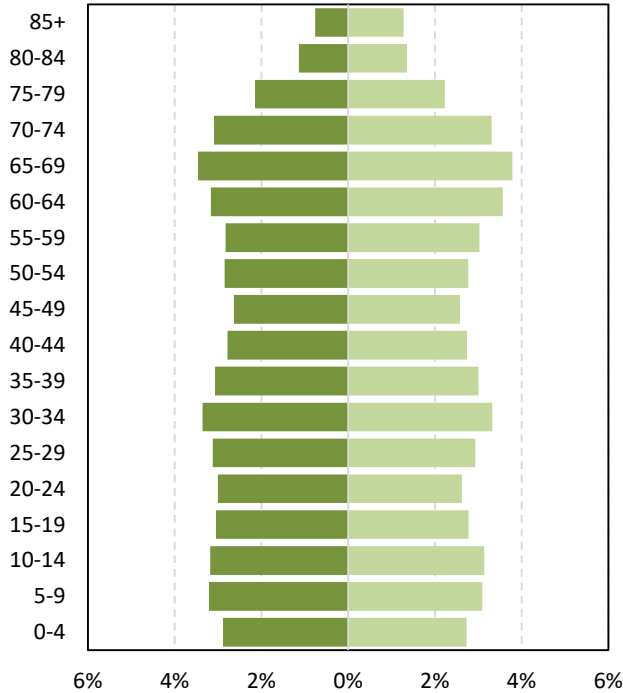


Sources: US Census Bureau. Oregon Health Authority (OHA). Calculated by Population Research Center (PRC)

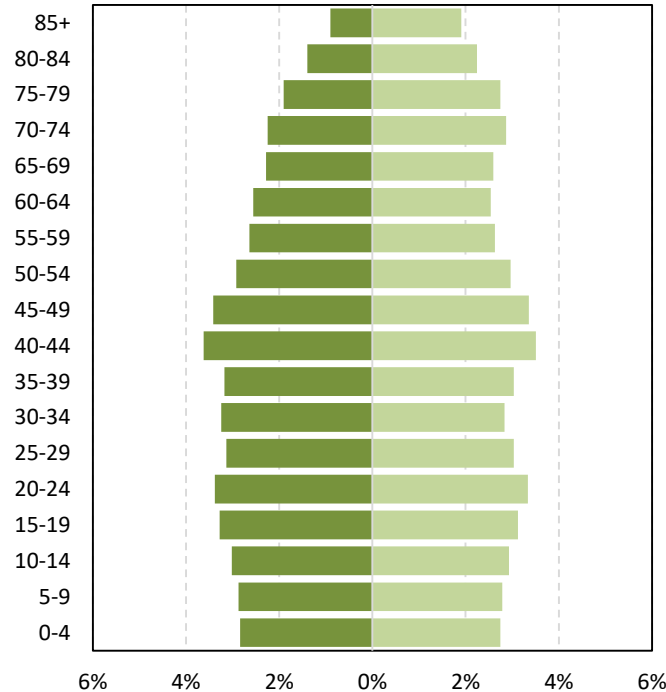
Historical and Forecast Trends

Population Age Structure

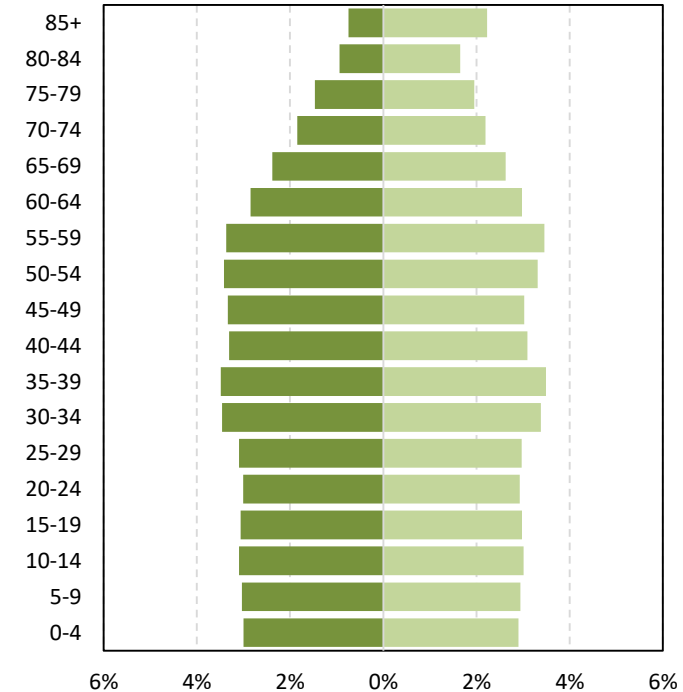
■ Male (2022) ■ Female (2022)



■ Male (2035) ■ Female (2035)



■ Male (2047) ■ Female (2047)



Source: Forecast by Population Research Center (PRC)

[Historical trend](#)

Historical and Forecast Trends

Historical and Forecast Population for Klamath County and its Sub-Areas

	Historical			Forecast				
	2010	2020	AAGR (2010-2020)	2022	2047	2072	AAGR (2022-2047)	AAGR (2047-2072)
Klamath County	66,380	69,413	0.4%	70,074	72,024	73,857	0.1%	0.1%
Larger UGBs								
Klamath Falls	42,771	44,349	0.4%	45,585	47,546	48,481	0.2%	0.1%
Smaller UGBs								
Bonanza	432	410	-0.5%	399	415	435	0.2%	0.2%
Chiloquin	835	870	0.4%	887	922	965	0.2%	0.2%
Malin	894	853	-0.5%	804	771	790	-0.2%	0.1%
Merrill	853	828	-0.3%	818	900	955	0.4%	0.2%
Outside UGBs	20,594	22,103	0.7%	21,581	21,471	22,231	0.0%	0.1%

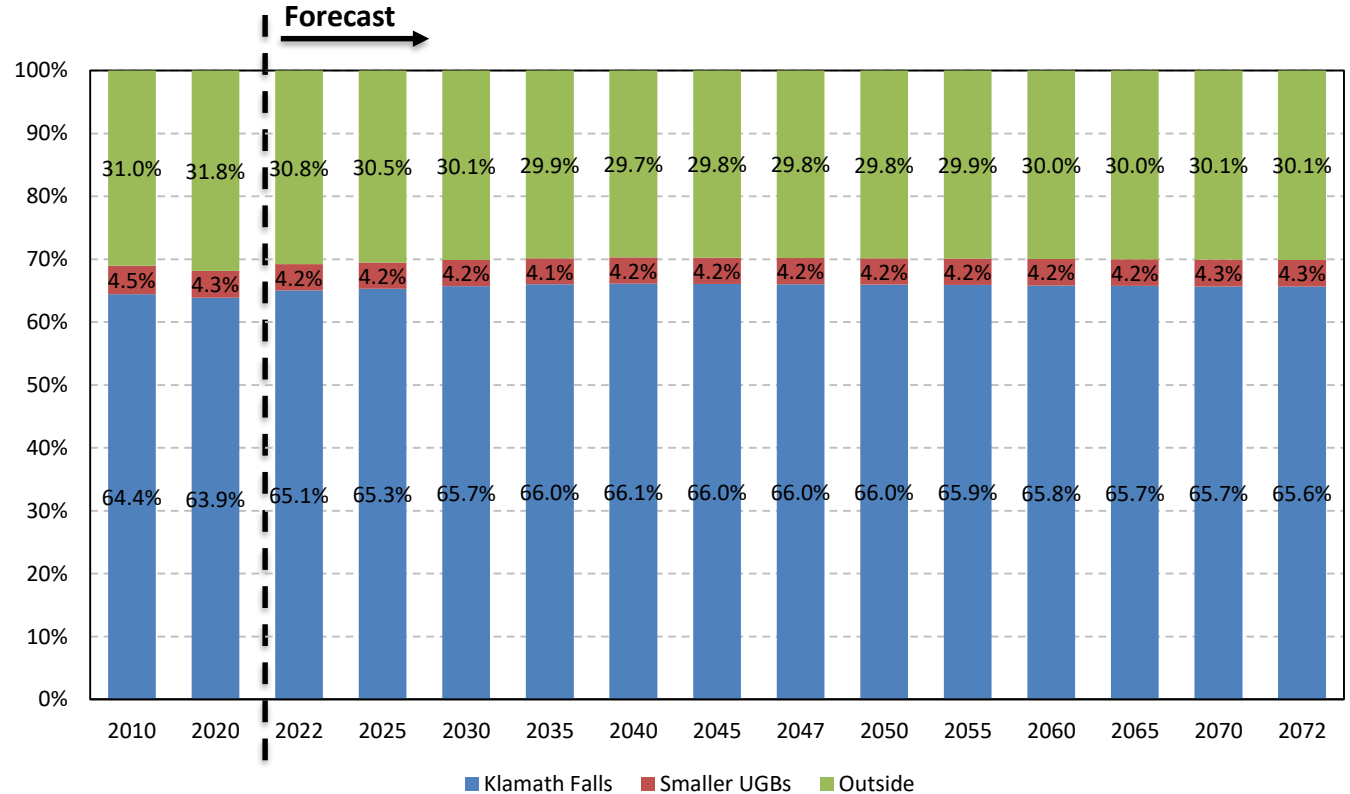
Note: UGBs are indicated by their city names. Larger sub-areas are those with populations over 8,000 in 2020.

Sources: U.S. Census Bureau; Forecast by Population Research Center (PRC)

Proposed Forecast Results

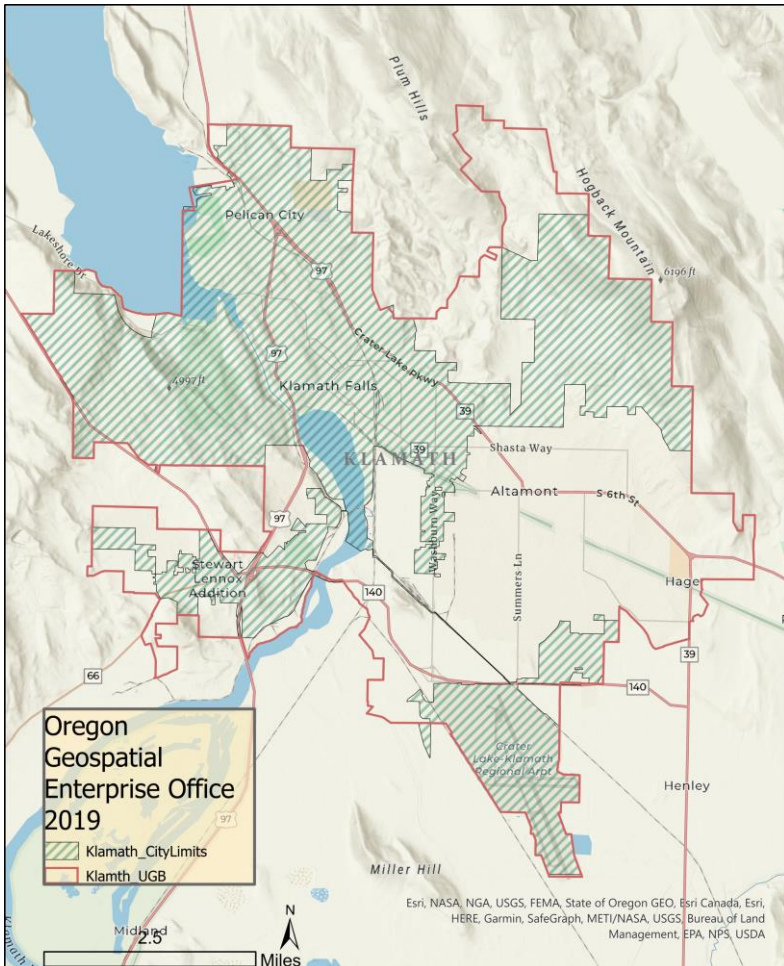
Klamath County – Population Shares of Sub-Areas and Outside UGBs

This figure shows the percentage of the county population that is in each group of sub-areas. Over time, the share of population living inside the UGBs increase while the share of population outside of UGBs decrease. Klamath Falls is expected to increase its population share. The distribution of population remains relatively similar to current data.



Sources: U.S. Census Bureau; Forecast by Population Research Center (PRC).
 Note: Sub-areas with populations under 8,000 in 2020 were considered smaller UGBs

Proposed Forecast Results



Population Distribution in Larger Sub-Areas

	Population	Share of County
Klamath Falls UGB		
2022	45,585	65.1%
2047	47,546	66.0%
2072	48,481	65.6%

Sources: Forecast by Population Research Center (PRC)

These numbers represent *Proposed* Forecast Results

Population Distribution in Smaller Sub-Areas

	Population			Share of County Population		
	2022	2047	2072	2022	2047	2072
Klamath County	70,074	72,024	73,857			
Bonanza	399	415	435	0.6%	0.6%	0.6%
Chiloquin	887	922	965	1.3%	1.3%	1.3%
Malin	804	771	790	1.1%	1.1%	1.1%
Merrill	818	900	955	1.2%	1.2%	1.3%
Outside UGB	21,581	21,471	22,231	30.8%	29.8%	30.1%

Note: Smaller sub-areas refer to those with populations under 8,000 in 2020.

Sources: Forecast by Population Research Center (PRC)

1. We expect Klamath County's population to grow gradually over time at an annual rate between 0.1% and 0.3%. The AAGR is projected to remain at ~0.1% during most of the forecast period.
2. Annual net migration is projected to maintain in the mid to lower 200s, which is within a range displayed by the historic trend.
3. Annual deaths have outnumbered annual births in the last several years and this trend is projected to continue in the forecast. Annual deaths are expected to reach 981 in 2047 while annual births are projected to reach 824.
4. Current population in the 30-40 age group will age forward over time, leading to a larger population share for the 40-50 and 50-60 age groups in the future. The share of the oldest age group will increase as well.
5. Klamath Falls will continue to account for the largest share of county population. In general, the population distribution does not change significantly in the forecast.

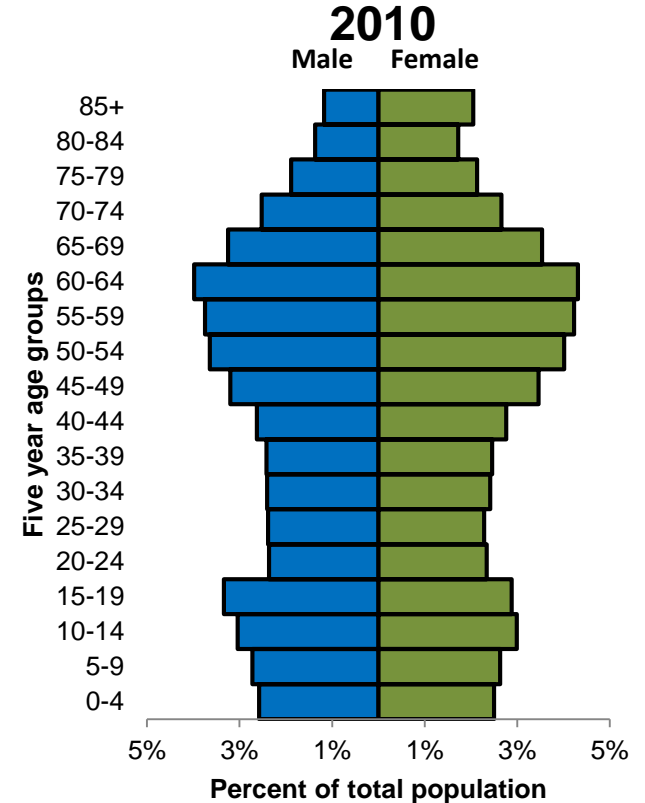
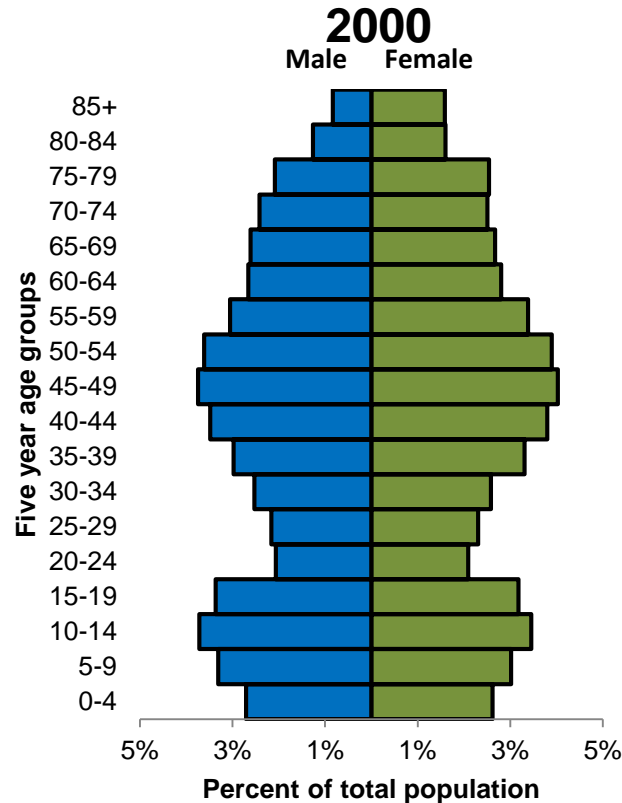
Race and ethnicity breakdown in 2010 and 2020

Hispanic or Latino and Race	2010		2020		Absolute Change	Relative Change
Total Population	66,380		69,413		3,033	4.6%
Hispanic or Latino (of any race)	6,915	10.4%	8,772	12.6%	1,857	26.9%
Not Hispanic or Latino	59,465	89.6%	60,641	87.4%	1,176	2.0%
White alone	53,822	81.1%	51,919	74.8%	-1,903	-3.5%
Black or African American alone	394	0.6%	497	0.7%	103	26.1%
American Indian and Alaska Native alone	2,407	3.6%	2,493	3.6%	86	3.6%
Asian alone	615	0.9%	754	1.1%	139	22.6%
Native Hawaiian and Other Pacific Islander alone	68	0.1%	104	0.1%	36	52.9%
Some Other Race alone	63	0.1%	396	0.6%	333	528.6%
Two or More Races	2,096	3.2%	4,478	6.5%	2,382	113.6%

Sources: US Census Bureau, 2010 and 2020 Decennial Census

Additional Historical Trends

These two age pyramids show the population from the 2000 and 2010 Census. Over time, the population ages forward. The older population accounts for an increasing share of the total population while the share of younger populations decreased.



Sources: US Census Bureau, 2000 and 2010 Decennial Census

State and county level age-specific fertility rates

