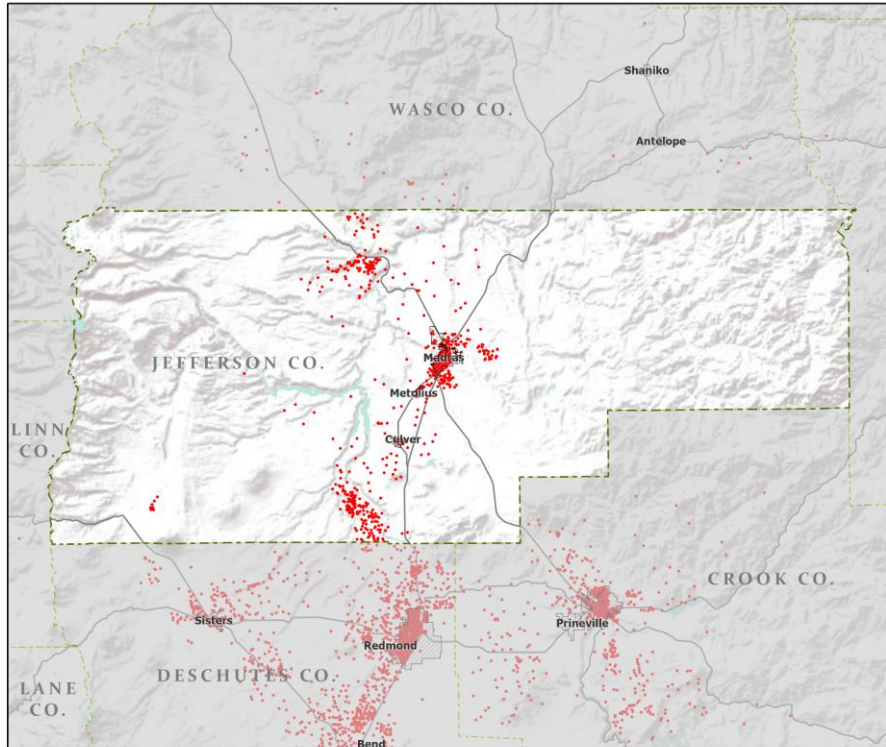


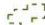





# Oregon Population Forecast Program

Proposed Coordinated Forecasts for Jefferson County,  
its Urban Growth Boundaries (UGBs), and the Area  
Outside UGBs

March 2022



-  Counties
-  Incorporated Cities
-  Highways
- 2010 POPULATION
-  1 Dot = 25 persons

# Jefferson County



Portland State University,  
Population Research Center,  
May 2021.  
[www.pdx.edu/prc](http://www.pdx.edu/prc)

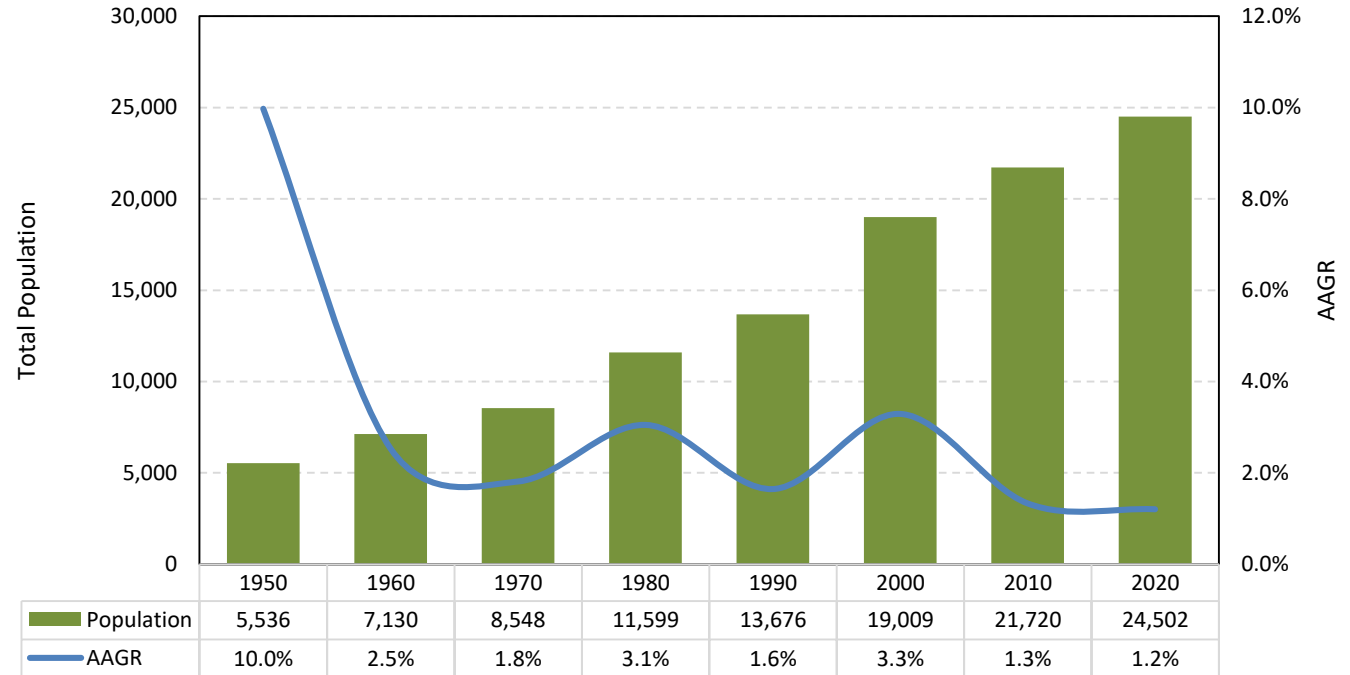
Sources: Esri, USGS, NOAA  
State of Oregon GEO;  
Oregon Dept. of  
Transportation.



# Proposed Forecast Results

*Jefferson County experienced the highest population growth in the 1950, where the county showed an AAGR of 10%. Although the AAGR has since dropped, it has remained above 1% throughout the past sixty years. After a peak of 3.3% was reached in the 2000 Census, the AAGR dropped to 1.3% and 1.2% in the 2010 and 2020 Census, respectively.*

## Historical Census Population

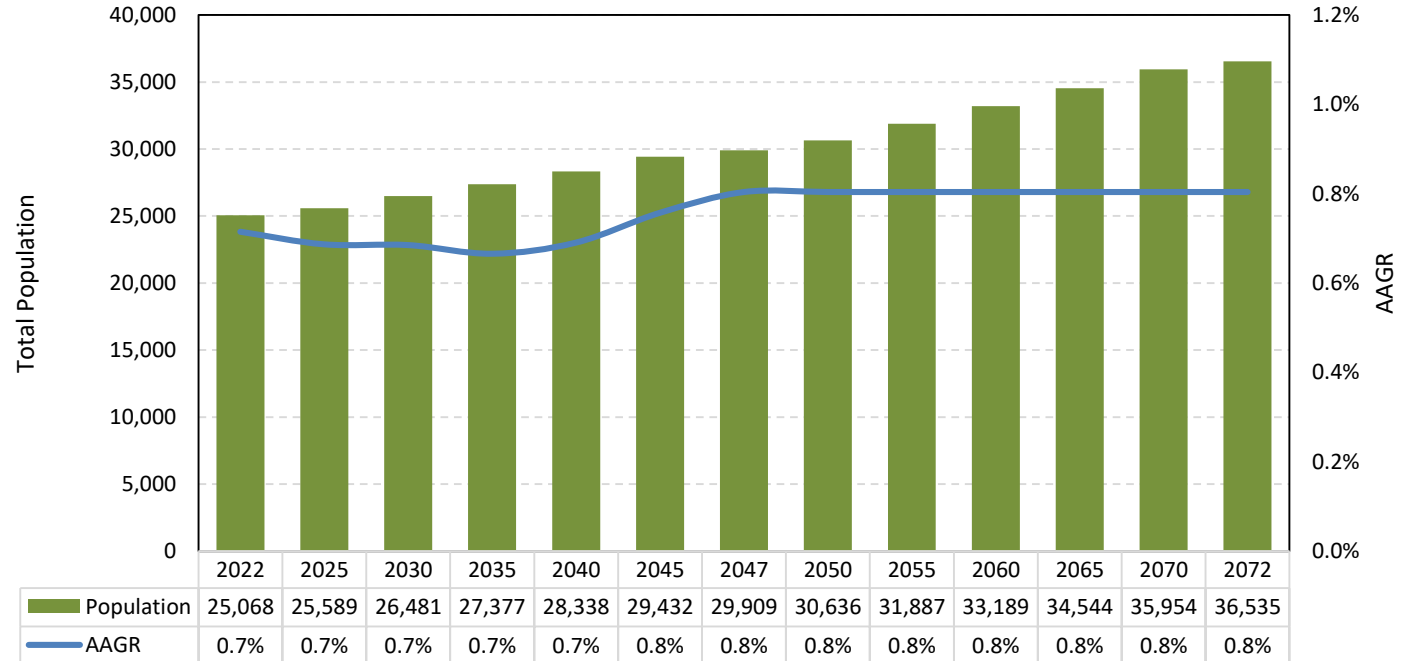


Source: US Census Bureau Decennial Census

# Proposed Forecast Results

*Jefferson County's population is projected to grow at an AAGR ranging from 0.7% to 0.8% over the forecast time horizon, reaching 36,535 in 2072. This indicates a 11,467 growth in 50 years.*

**Population Forecast (2022-2047)**

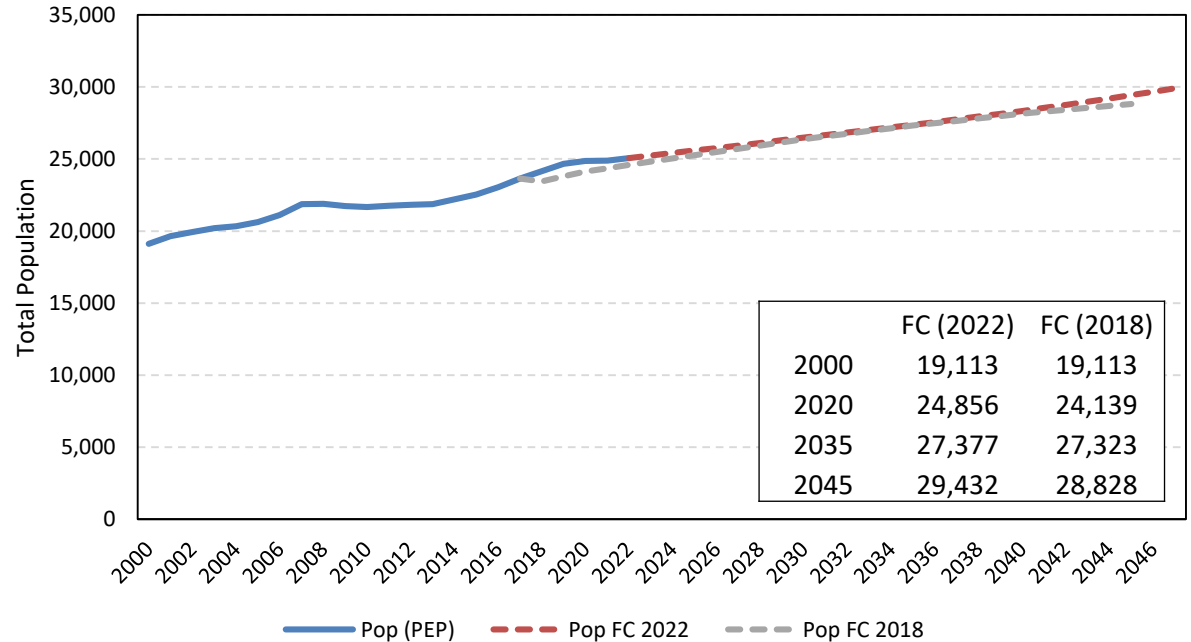


Source: Forecasted by Population Research Center (PRC)

# Proposed Forecast Results

*The current forecast follows a similar trend as in the 2018 forecast. Current forecast puts the county population at 29,432 in 2045, compared to 28,828 in the 2018 forecast. The current forecast results in 604 more people than the 2018 forecast.*

### Population Forecast Comparison

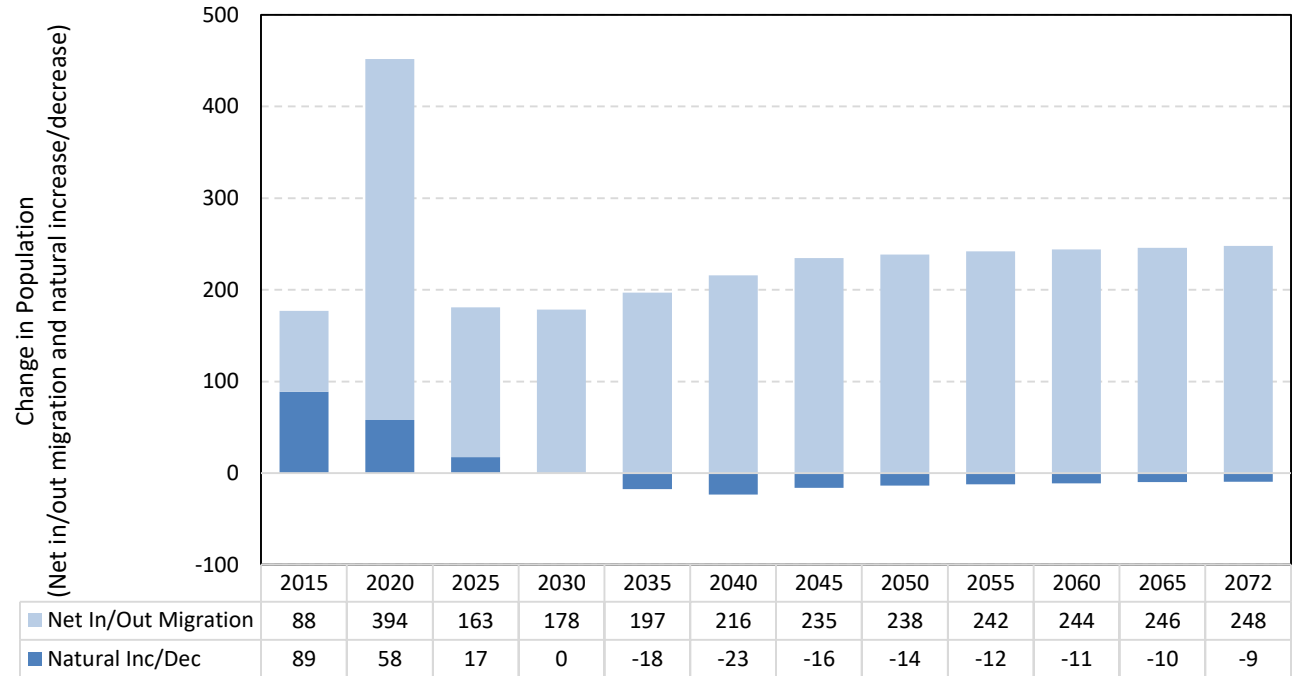


Source: US Census Bureau Population Estimates Program (PEP). Forecast by Population Research Center (PRC)  
Note: PEP estimates may be different from the 2020 Census.

# Proposed Forecast Results

*Natural decrease in Jefferson County occurs after 2030. Because annual net migration continues to be positive and outnumbers natural decrease, the county population is projected to increase.*

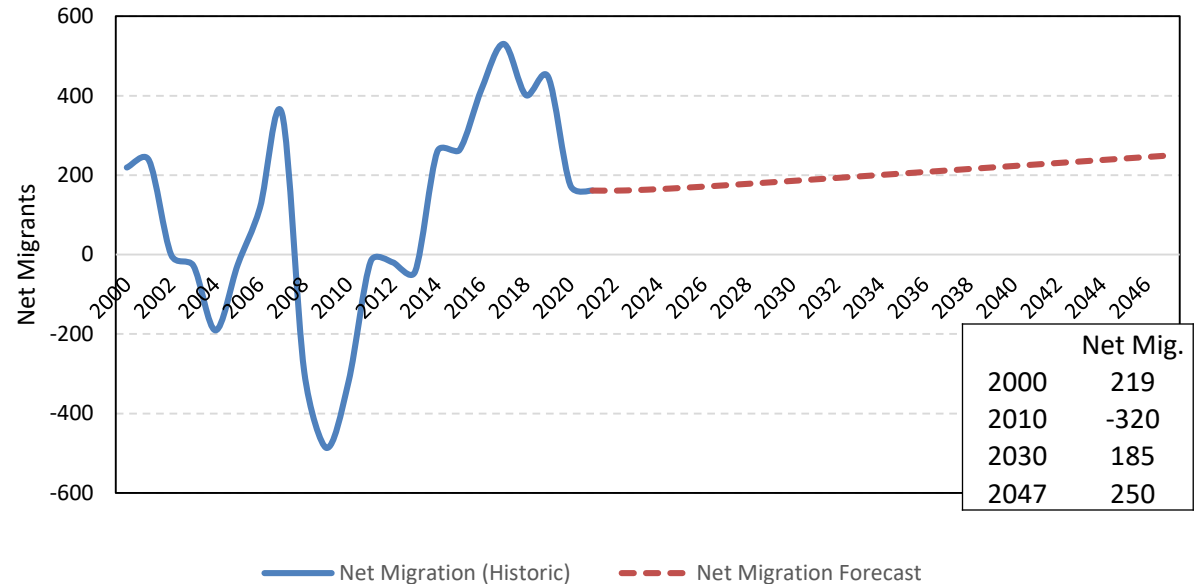
**Components of Population Change by 5-year Intervals (2015-2072)**



Source: Forecast by Population Research Center (PRC)

*Annual net migration reached a low point around 2010 but has remained positive for most of the years afterwards. Net migration peaked in 2017 with a total of 530 net migrants. Future net migration is projected to remain positive with graduate increase over time.*

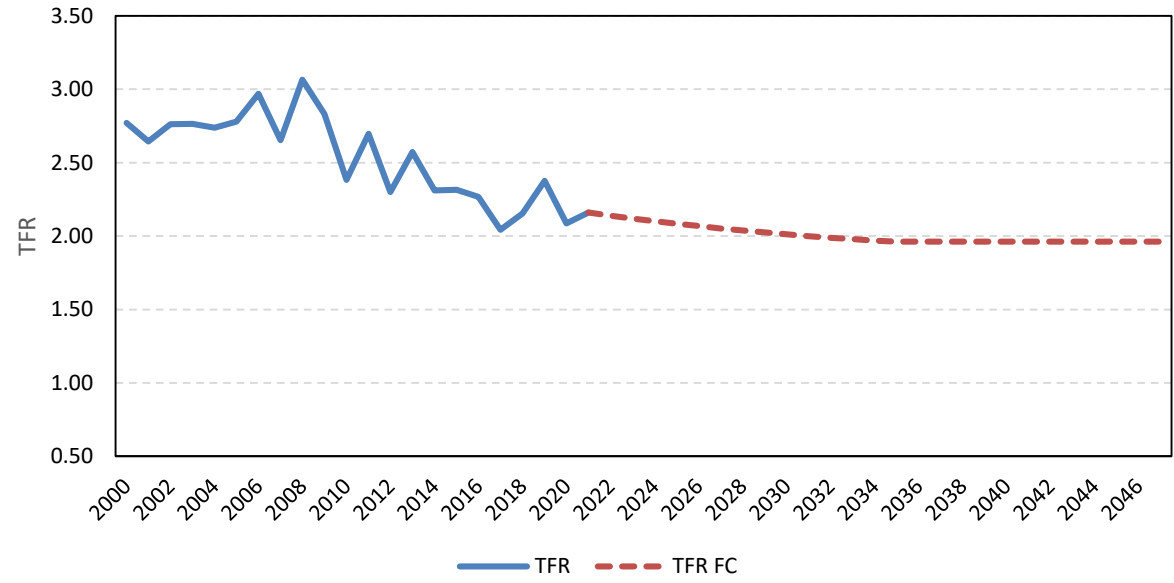
### Annual Net Migration (2000-2047)



Sources: US Census Bureau. Forecast by Population Research Center (PRC).

*The total fertility rate (TFR) for women age 15-44 in the county has followed a declining trend. Historically, Jefferson County's TFR has been relatively high compared to other counties in Region 1. However, TFR has remained under 2.5 since 2014.*

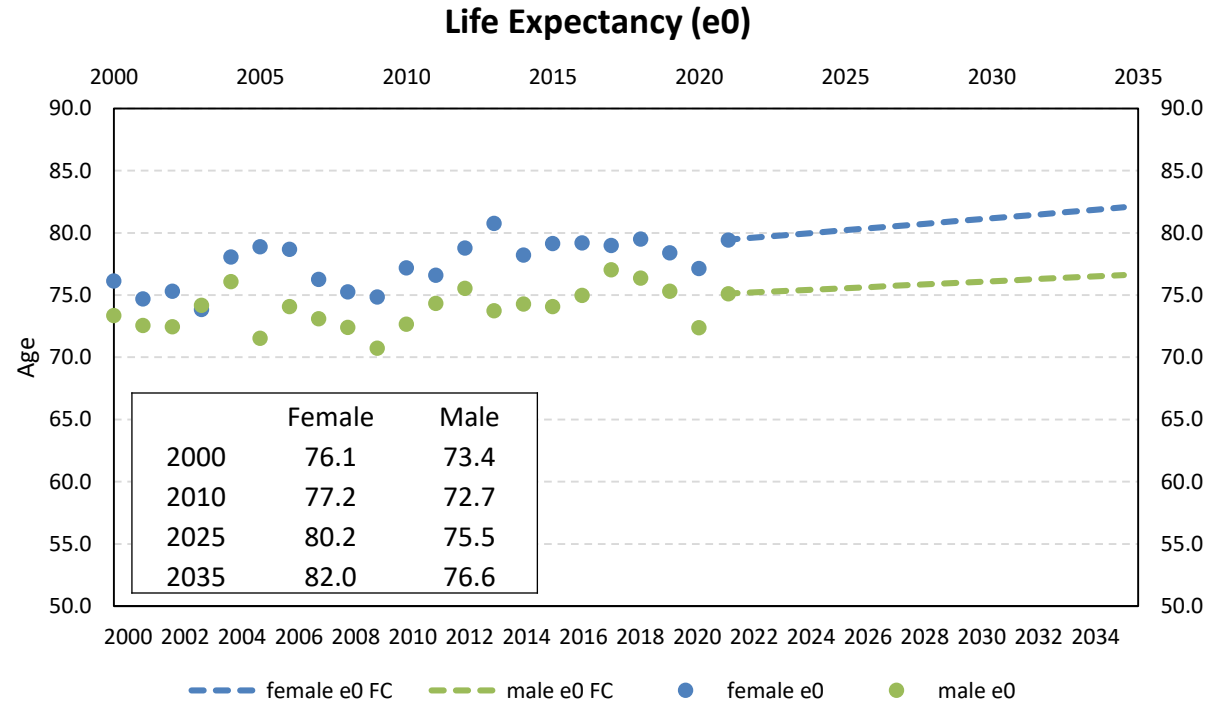
### Total Fertility Rate (TFR)



Sources: Oregon Health Authority, Center for Health Statistics. Calculations and forecast by Population Research Center (PRC).

# Historical and Forecast Trends

*Life expectancy for both female and male is projected to follow an increasing trend. Female life expectancy is projected to reach 82.0 in 2035, while male life expectancy is projected to reach 76.6.*

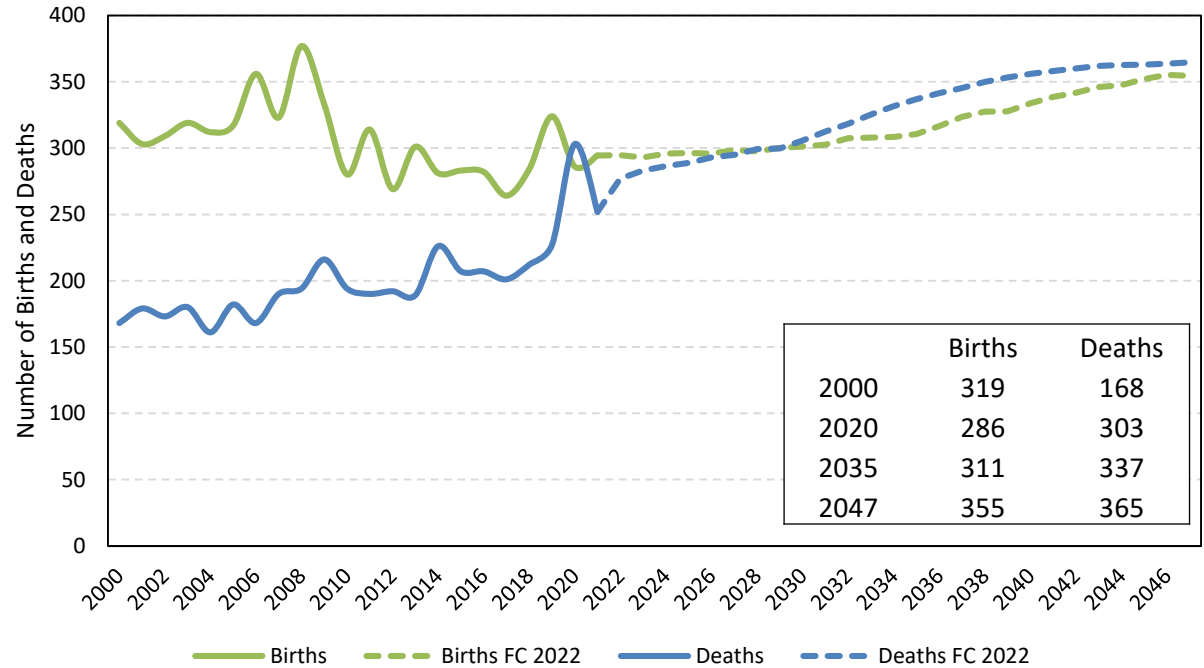


Sources: Oregon Health Authority, Center for Health Statistics. Calculations and forecast by Population Research Center (PRC).

# Historical and Forecast Trends

*Historically, the number of births has been larger than deaths, giving the county a natural increase. The exception would be 2020. Annual deaths are projected to eventually surpass births around 2028, even though births indicate an increase as well.*

### Historical and Forecast Annual Births and Deaths (2000-2047)

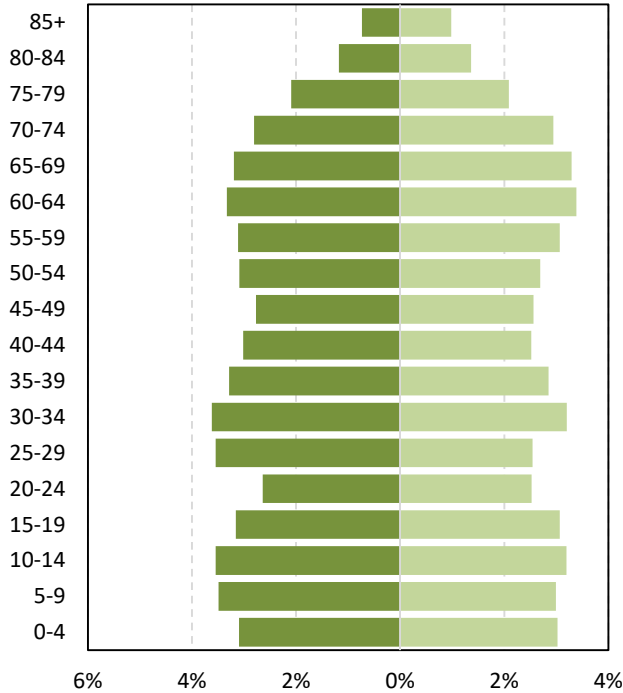


Source: Oregon Health Authority, Center for Health Statistics. Forecast by Population Research Center (PRC)

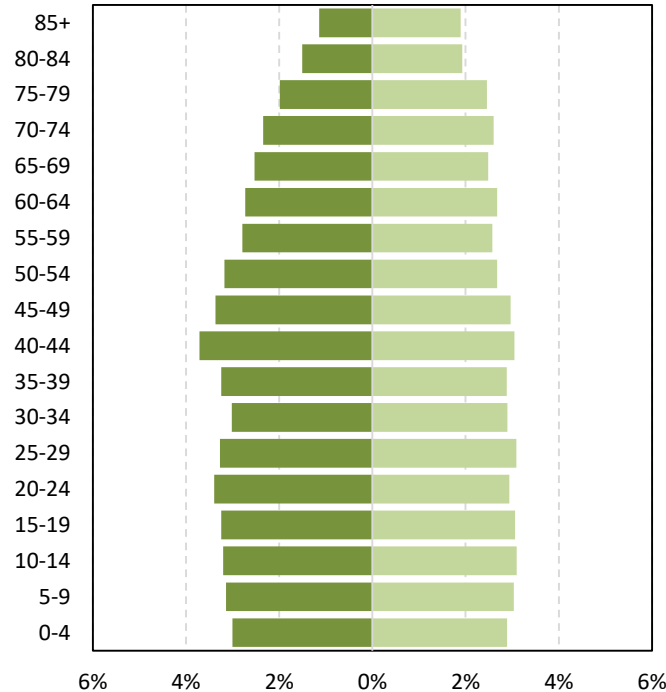
# Historical and Forecast Trends

## Population Age Structure

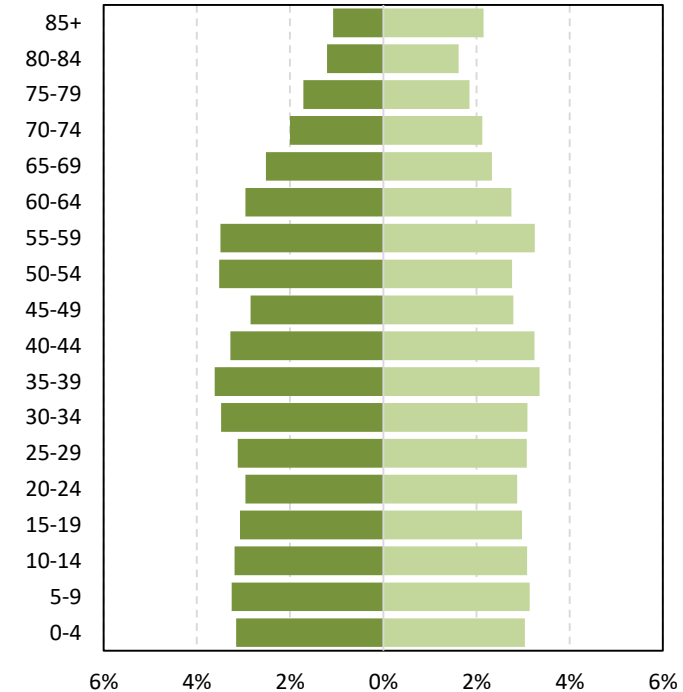
■ Male (2022) ■ Female (2022)



■ Male (2035) ■ Female (2035)



■ Male (2047) ■ Female (2047)



Source: Forecast by Population Research Center (PRC)

[Historical trend](#)

# Historical and Forecast Trends

## Historical and Forecast Population for Jefferson County and its Sub-Areas

	Historical			Forecast				
	2010	2020	AAGR (2010-2020)	2022	2047	2072	AAGR (2022-2047)	AAGR (2047-2072)
<b>Jefferson County</b>	21,720	24,502	1.2%	25,068	29,909	36,535	0.7%	0.8%
<b>Lager UGBs</b>								
Madras	7,417	8,901	1.8%	9,224	13,119	18,043	1.4%	1.3%
<b>Smaller UGBs</b>								
Culver	1,359	1,623	1.8%	1,683	2,127	2,852	0.9%	1.2%
Metolius	756	1,036	3.2%	1,012	1,262	1,717	0.9%	1.2%
<b>Outside UGBs</b>	12,944	13,978	0.8%	13,148	13,400	13,922	0.1%	0.2%

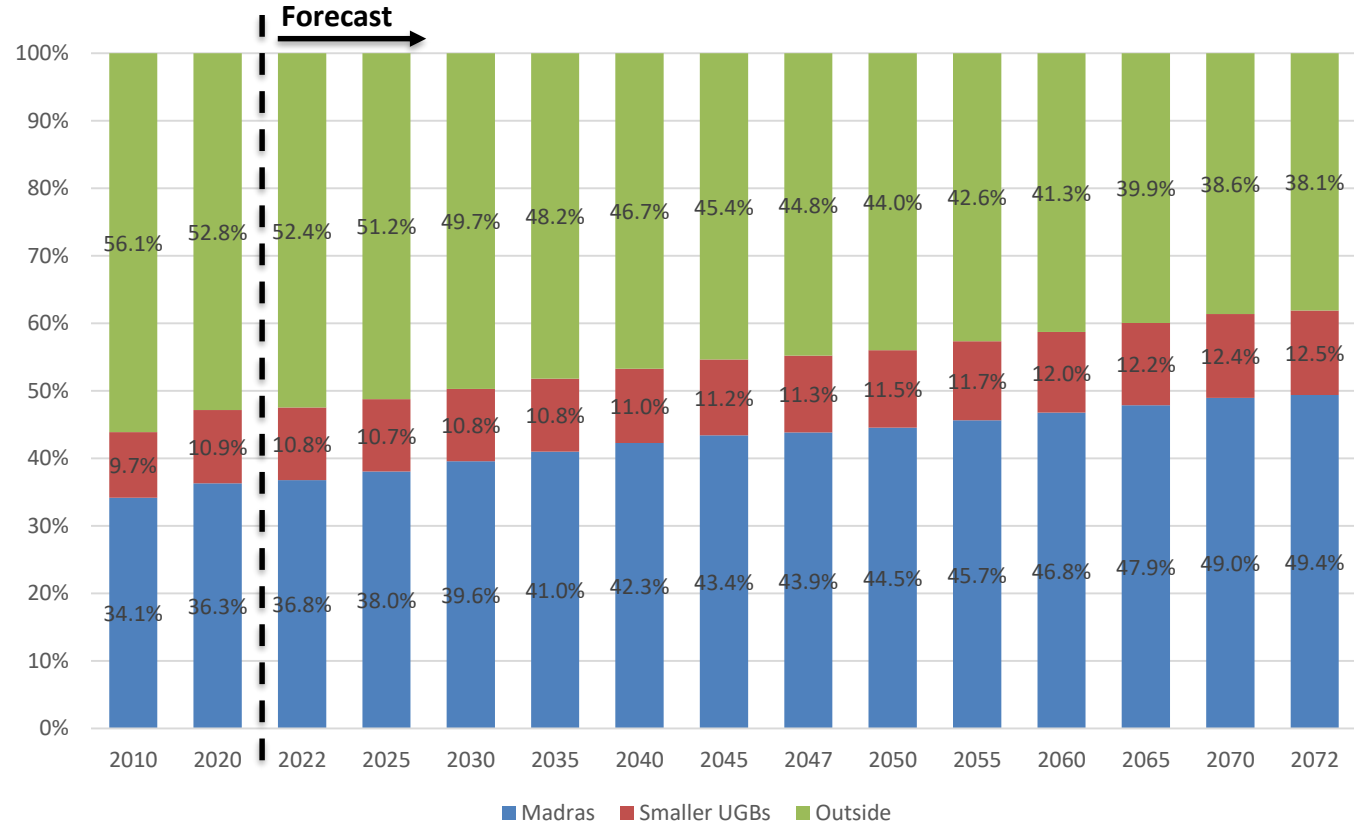
*Note: UGBs are indicated by their city names. Lager sub-areas are those with populations over 8,000 in 2020.*

Sources: U.S. Census Bureau; Forecast by Population Research Center (PRC)

# Proposed Forecast Results

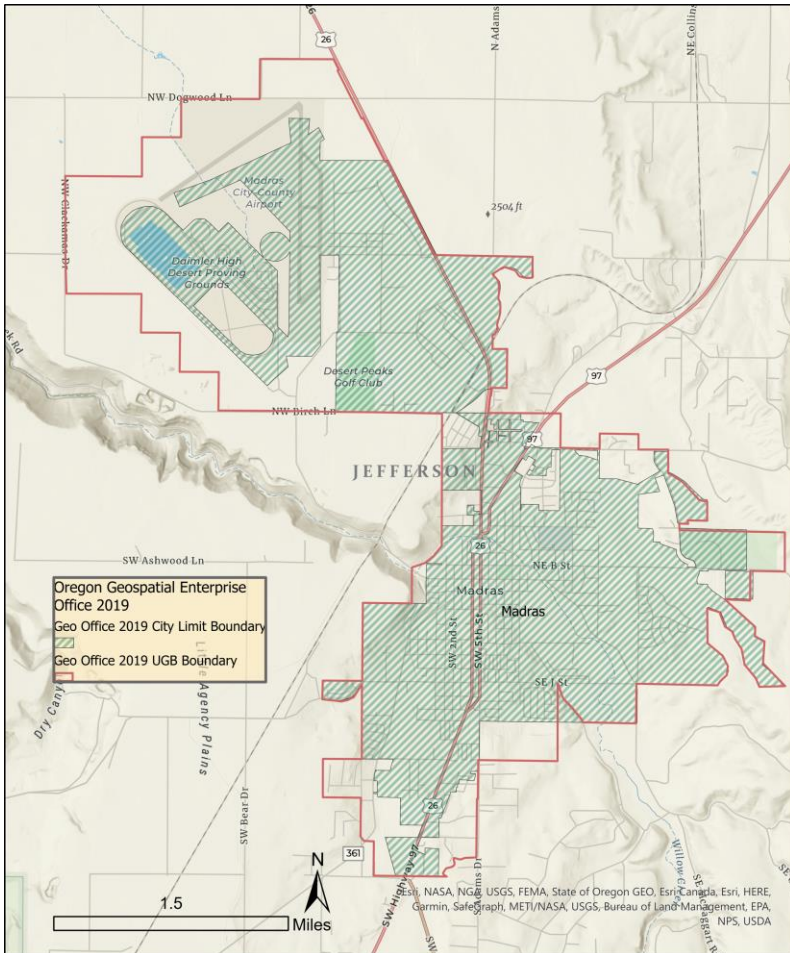
Jefferson County – Population Shares of Sub-Areas and Outside UGBs

*This figure shows the percentage of the county population that is in each group of sub-areas. Over time, the share of population living inside the UGBs increase while the share of population outside of UGBs decrease. The population share inside the UGBs is expected to grow and account for more than 50% by 2030.*



Sources: U.S. Census Bureau; Forecast by Population Research Center (PRC).  
 Note: Sub-areas with populations under 8,000 in 2020 were considered smaller UGBs

# Proposed Forecast Results



## Population Distribution in Larger Sub-Areas

	Population	Share of County
<b>Madras UGB</b>		
2022	9,224	36.8%
2047	13,119	43.9%
2072	18,043	49.4%

Sources: Forecast by Population Research Center (PRC)

## Population Distribution in Smaller Sub-Areas

	Population			Share of County Population		
	2022	2047	2072	2022	2047	2072
<b>Jefferson County</b>	25,068	29,909	36,535			
Culver	1,683	2,127	2,852	6.7%	7.1%	7.8%
Metolius	1,012	1,262	1,717	4.0%	4.2%	4.7%
Outside	13,148	13,400	13,922	52.4%	44.8%	38.1%

*Note: Smaller sub-areas refer to those with populations under 8,000 in 2020.*

Sources: Forecast by Population Research Center (PRC)

1. We expect Jefferson County's population to grow at a relatively robust rate, ranging from 0.7% to 0.8% annually.
2. Annual net migration is projected to be in the upper 100s to mid 200s, which is within the historic range from the past two decades.
3. Annual births and annual deaths are both projected to increase over time. Although annual deaths are expected to outnumber births in the future, annual births show an increasing trend after 2030.
4. Jefferson County has a relatively larger share of younger population compared to many other counties in Region 1, however, the older population share still tends to increase over time. Current younger populations are expected to age forward.
5. Population outside of the UGBs is expected to lose share over time. Madras and the two smaller UGBs are expected to increase their population share. Madras is projected to account for nearly 50% of the total county population by 2072.



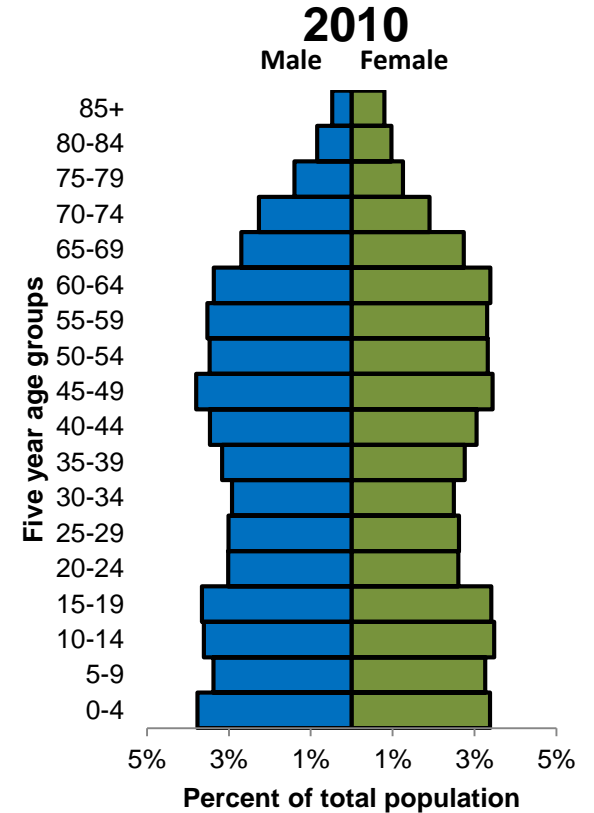
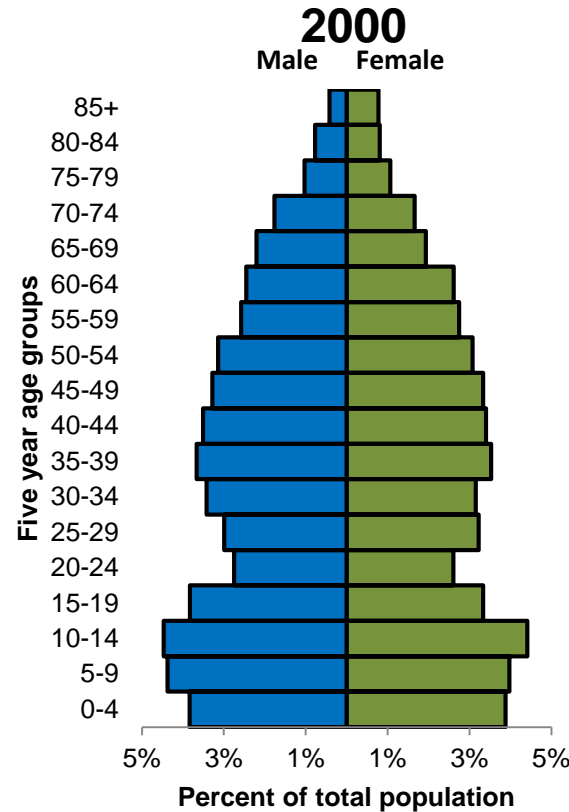
## Race and ethnicity breakdown in 2010 and 2020

Hispanic or Latino and Race	2010		2020		Absolute Change	Relative Change
<b>Total Population</b>	21,720		24,502		2,782	12.8%
<b>Hispanic or Latino (of any race)</b>	4,195	19.3%	5,002	20.4%	807	19.2%
<b>Not Hispanic or Latino</b>	17,525	80.7%	19,500	79.6%	1,975	11.3%
<b>White alone</b>	13,429	61.8%	15,005	61.2%	1,576	11.7%
<b>Black or African American alone</b>	117	0.5%	134	0.5%	17	14.5%
<b>American Indian and Alaska Native alone</b>	3,360	15.5%	2,981	12.2%	-379	-11.3%
<b>Asian alone</b>	83	0.4%	131	0.5%	48	57.8%
<b>Native Hawaiian and Other Pacific Islander alone</b>	23	0.1%	18	0.1%	-5	-21.7%
<b>Some Other Race alone</b>	34	0.2%	66	0.3%	32	94.1%
<b>Two or More Races</b>	479	2.2%	1,165	4.8%	686	143.2%

Sources: US Census Bureau, 2010 and 2020 Decennial Census

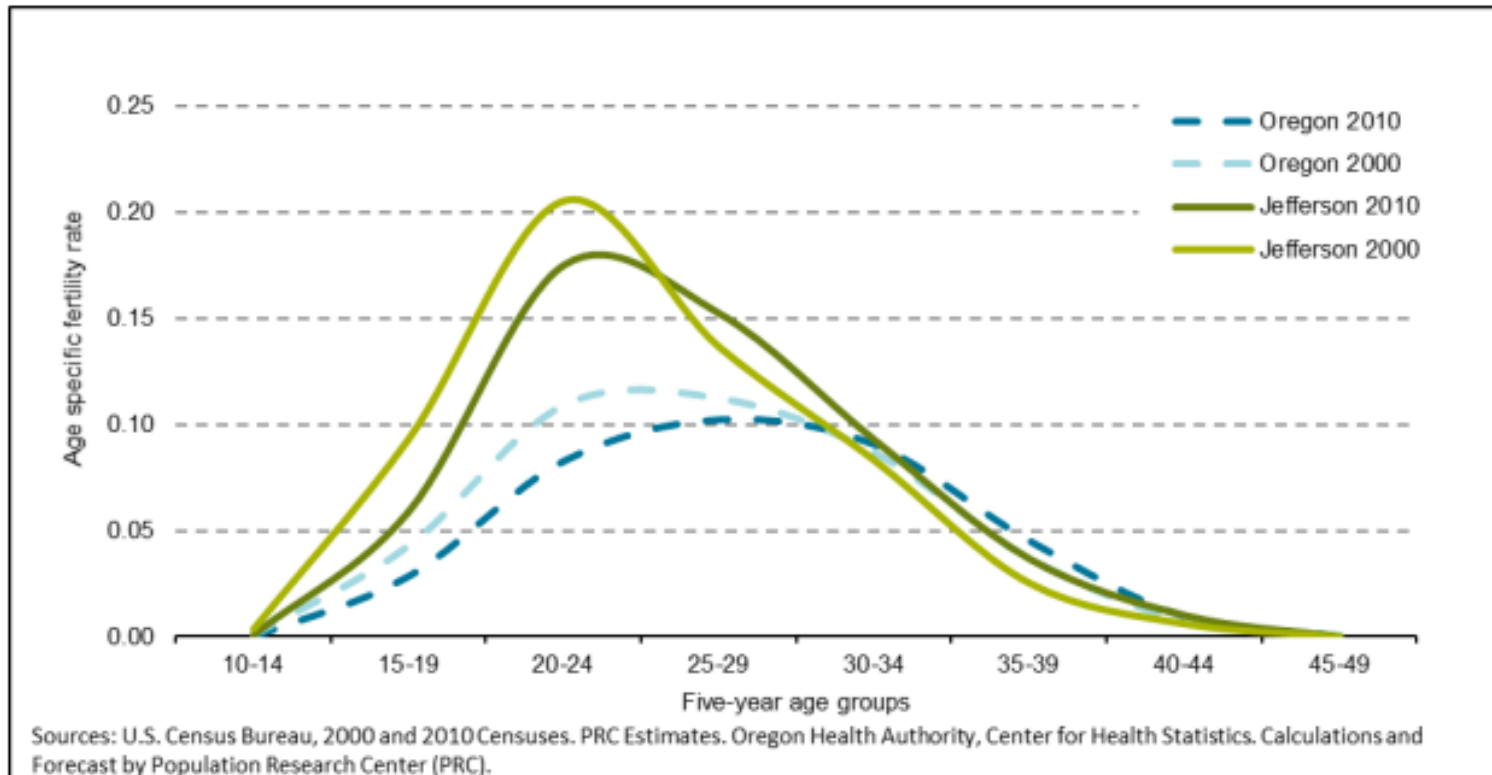
# Additional Historical Trends

*These two age pyramids show the population from the 2000 and 2010 Census. Over time, the population ages forward. The older population accounts for an increasing share of the total population while the share of younger populations decreased.*



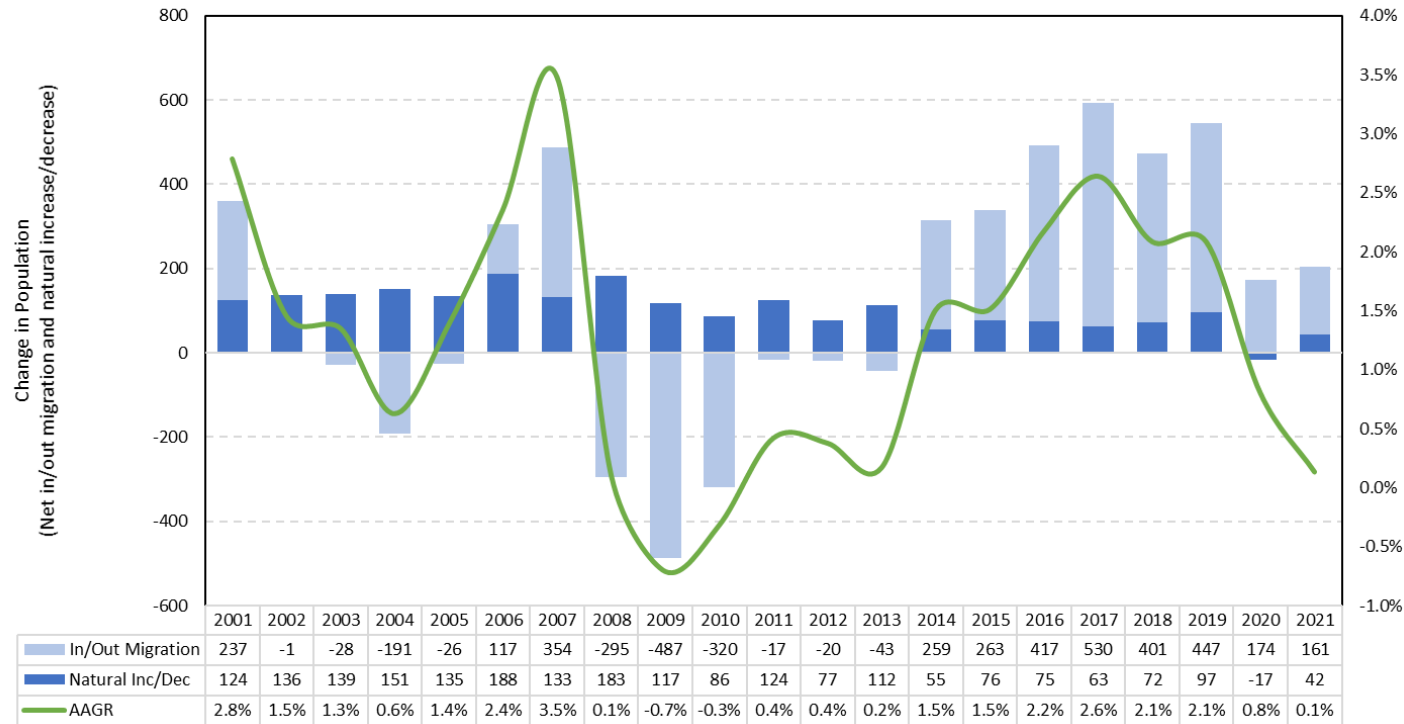
Sources: US Census Bureau, 2000 and 2010 Decennial Census

## State and county level age-specific fertility rates



# Additional Historical Trends

Components of Population Change and Average Annual Growth Rate (2001-2021)



Sources: US Census Bureau. Oregon Health Authority (OHA). Calculated by Population Research Center (PRC)