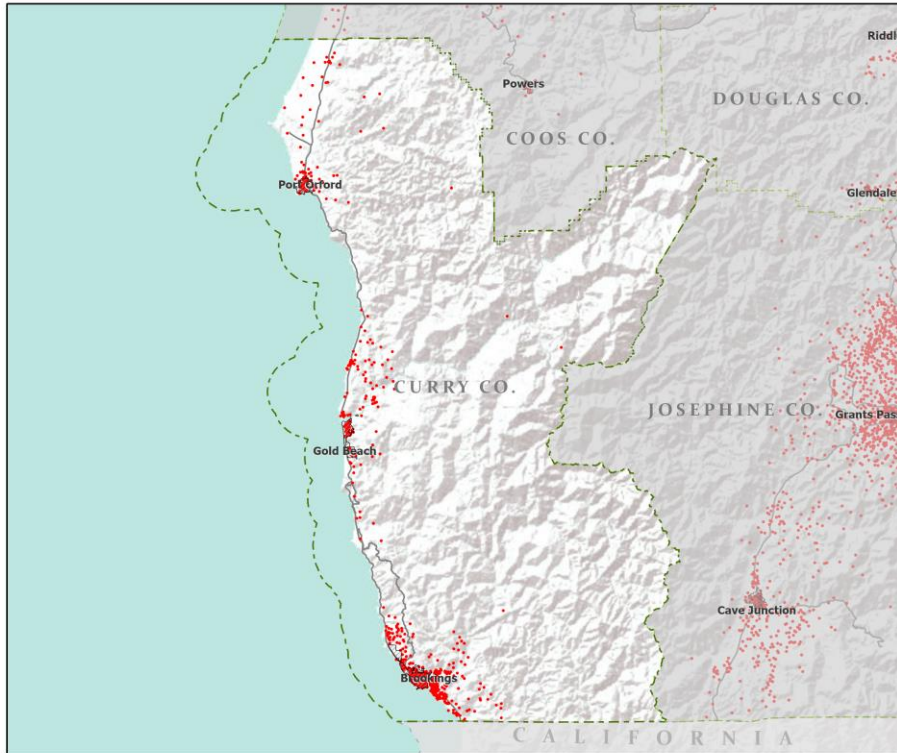


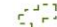



Oregon Population Forecast Program

Proposed Coordinated Forecasts for Curry County, its Urban Growth Boundaries (UGBs), and the Area Outside UGBs

March 2022

Population: Curry County



-  Counties
-  Incorporated Cities
-  Highways
- 2010 POPULATION
-  1 Dot = 25 persons



Portland State University,
Population Research Center,
May 2021.
www.pdx.edu/prc

Sources: Esri, USGS, NOAA
State of Oregon GEO;
Oregon Dept. of
Transportation.

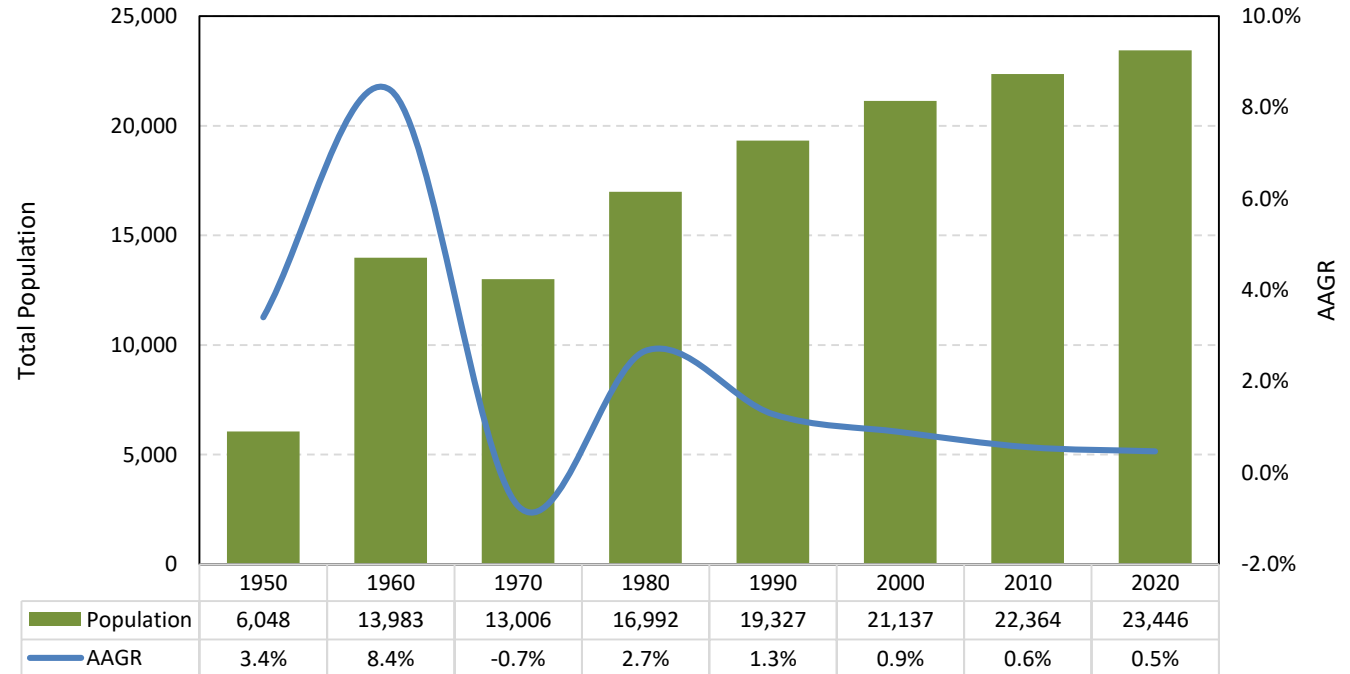


Curry County

Proposed Forecast Results

Curry County experienced the highest population growth rate between 1950 and 1960, reaching 8.4% annually. Population growth has slowed since the 1980s and averaged 0.5% between the 2010 and 2020 Census.

Historical Census Population

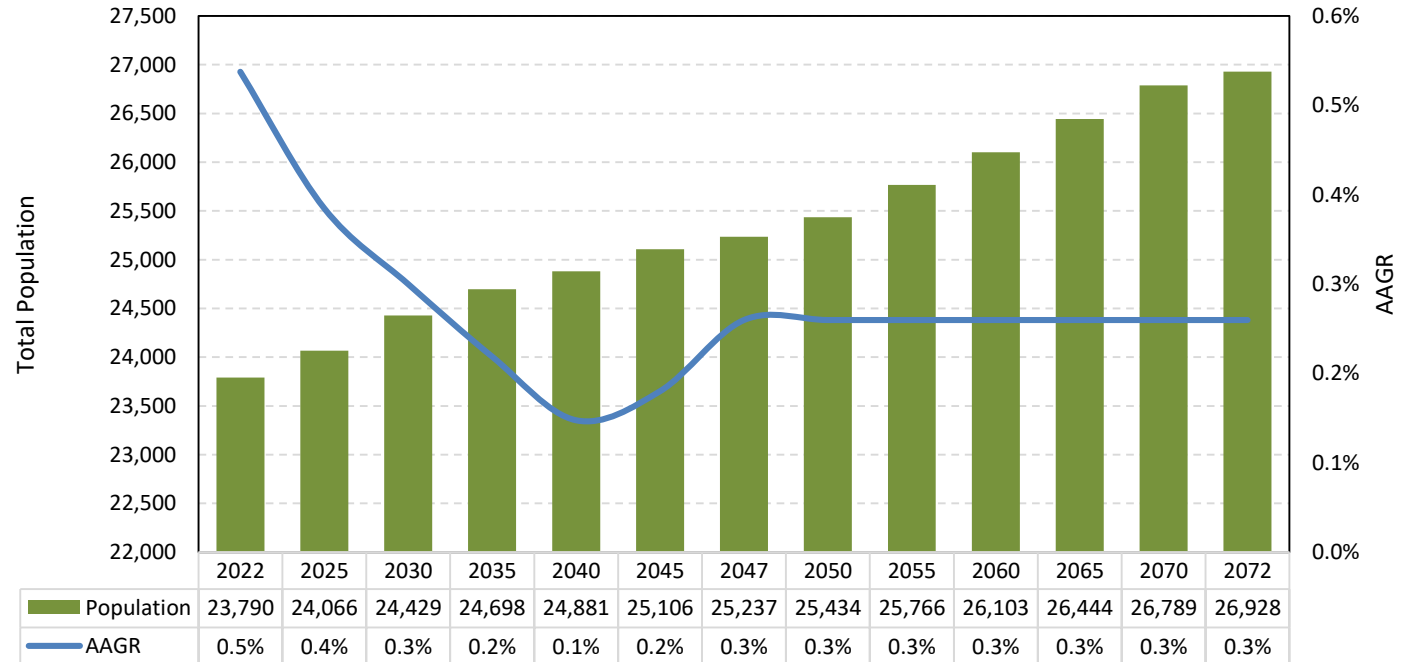


Source: US Census Bureau Decennial Census

Proposed Forecast Results

Curry County's population is projected to gradually increase throughout the forecast period. The AAGR is projected to range from 0.1% to 0.5%. The total county population is 26,928 in 2072, compared to 23,790 in 2022.

Population Forecast (2022-2047)

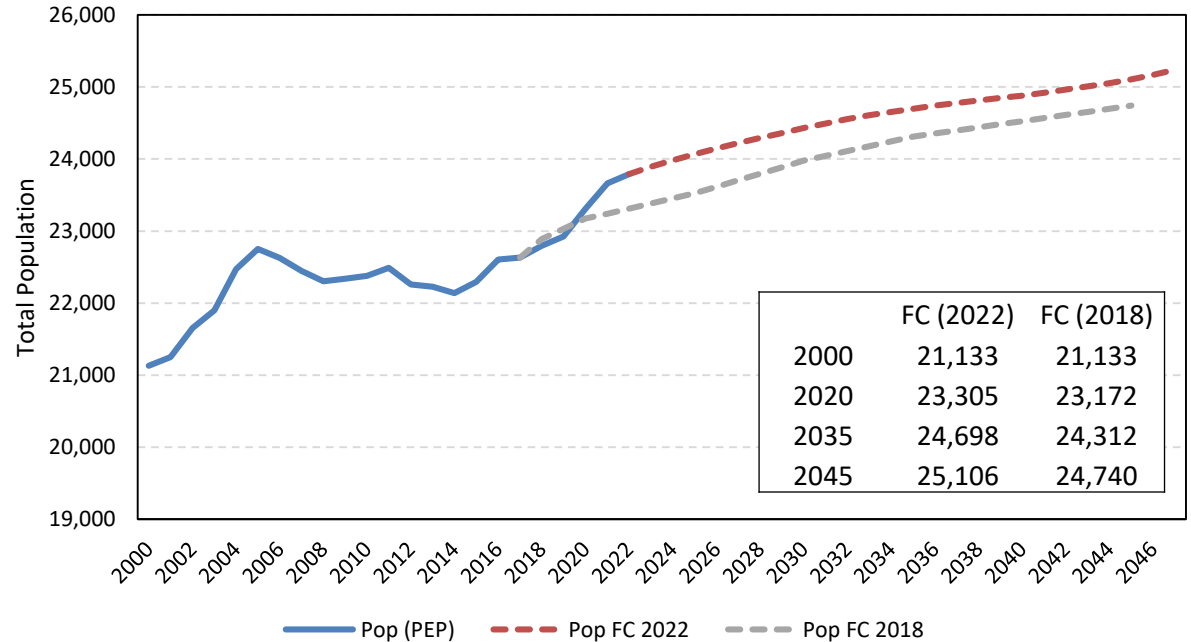


Source: Forecasted by Population Research Center (PRC)

Proposed Forecast Results

The current forecast is higher compared to the 2018 forecast. Current forecast puts Curry County's population at 25,106 by 2045, while the 2018 forecast projected a population of 24,740 by 2045.

Population Forecast Comparison

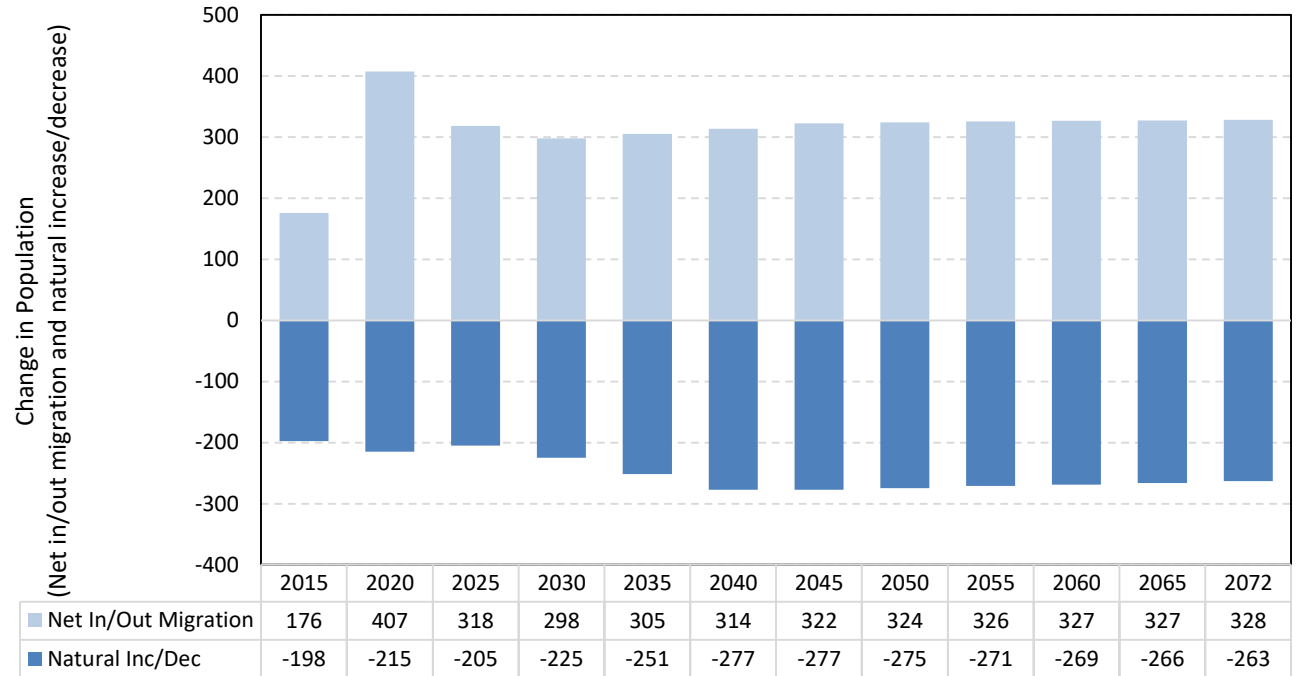


Source: US Census Bureau Population Estimates Program (PEP). Forecast by Population Research Center (PRC)
Note: PEP estimates may be different from the 2020 Census.

Proposed Forecast Results

Natural decrease in Curry County will continue throughout the forecast period. Net migration is projected to remain in the lower 300s during most years.

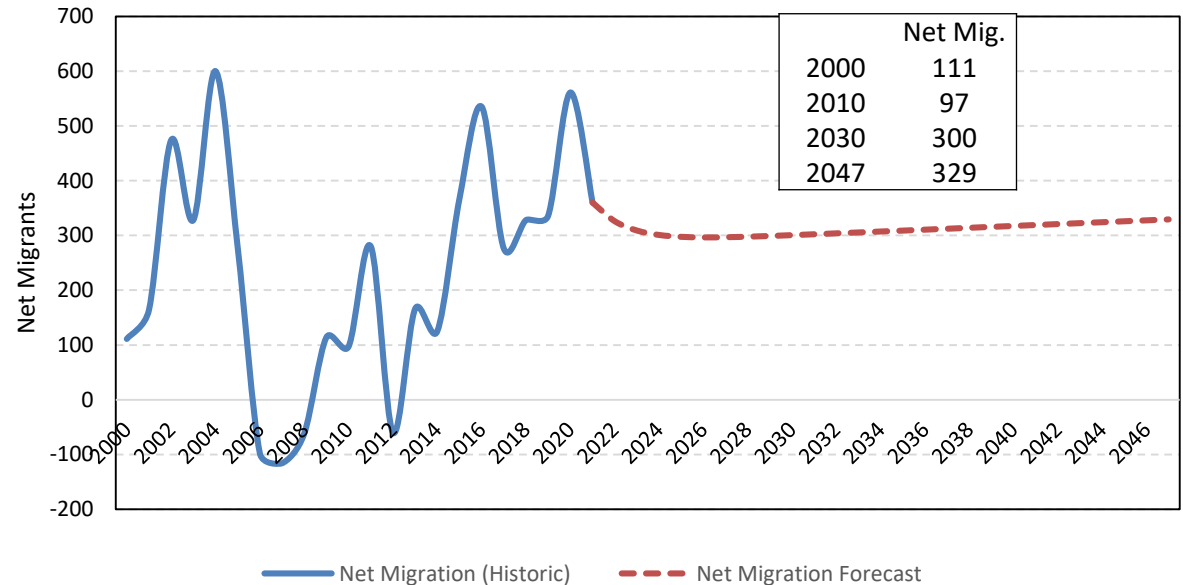
Components of Population Change by 5-year Intervals (2015-2072)



Source: Forecast by Population Research Center (PRC)

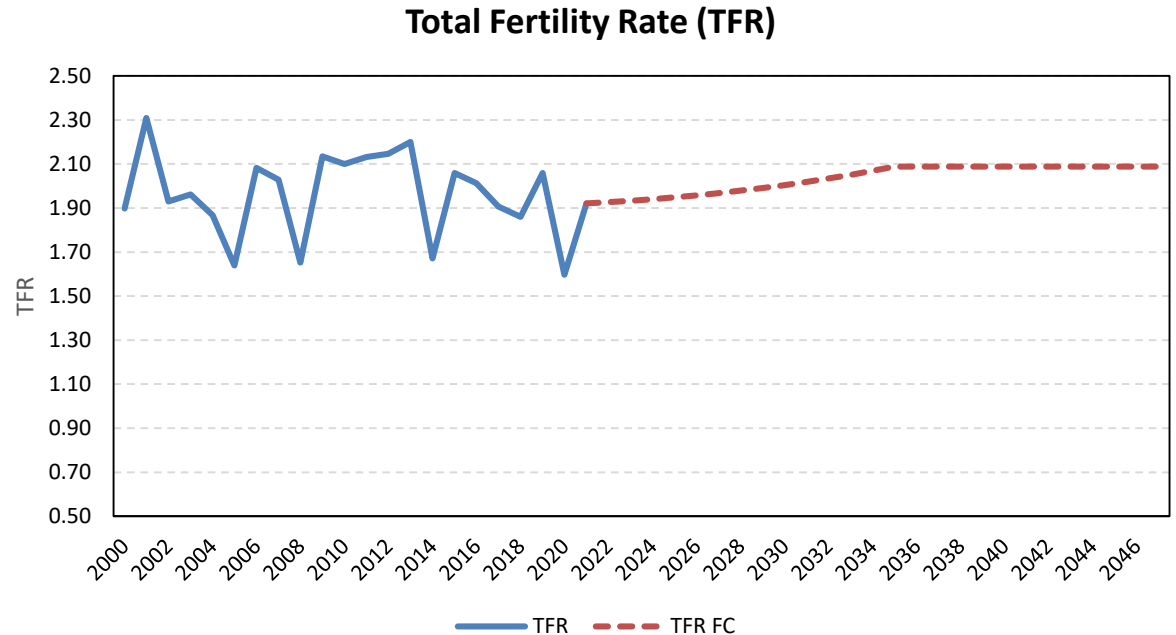
Annual net migration is projected to be relatively stable with slight increase over time. Curry County experienced the lowest net migration around 2008 and 2012. Annual net migration has remained positive since 2012. For most of the years during the forecast period, the annual net migration is at the lower 300s.

Annual Net Migration (2000-2047)



Sources: US Census Bureau. Forecast by Population Research Center (PRC).

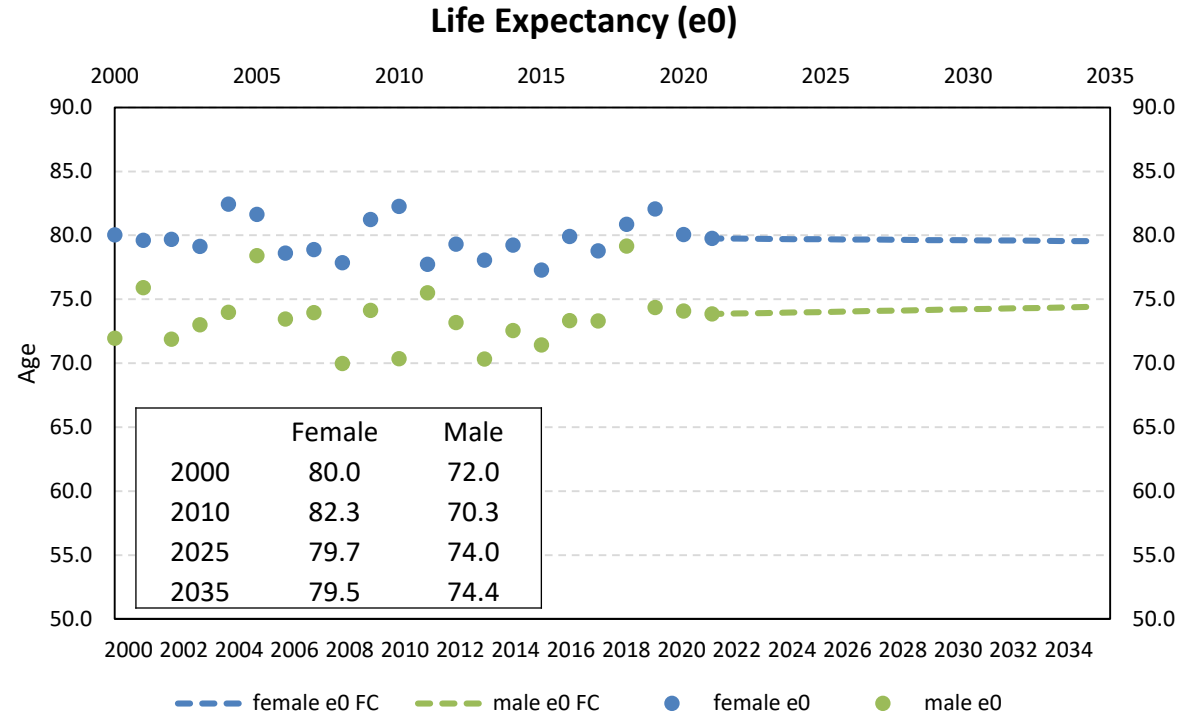
The total fertility rate (TFR) for women age 15-44 in the county varied from time to time. TFR is projected to show a slight increase over time and reach 2.1 by 2035.



Sources: Oregon Health Authority, Center for Health Statistics. Calculations and forecast by Population Research Center (PRC).

Historical and Forecast Trends

Life expectancy for female does not change significantly over time while the life expectancy for male increases over the forecast period. Overall, the life expectancy for both sex aligns with historic data.

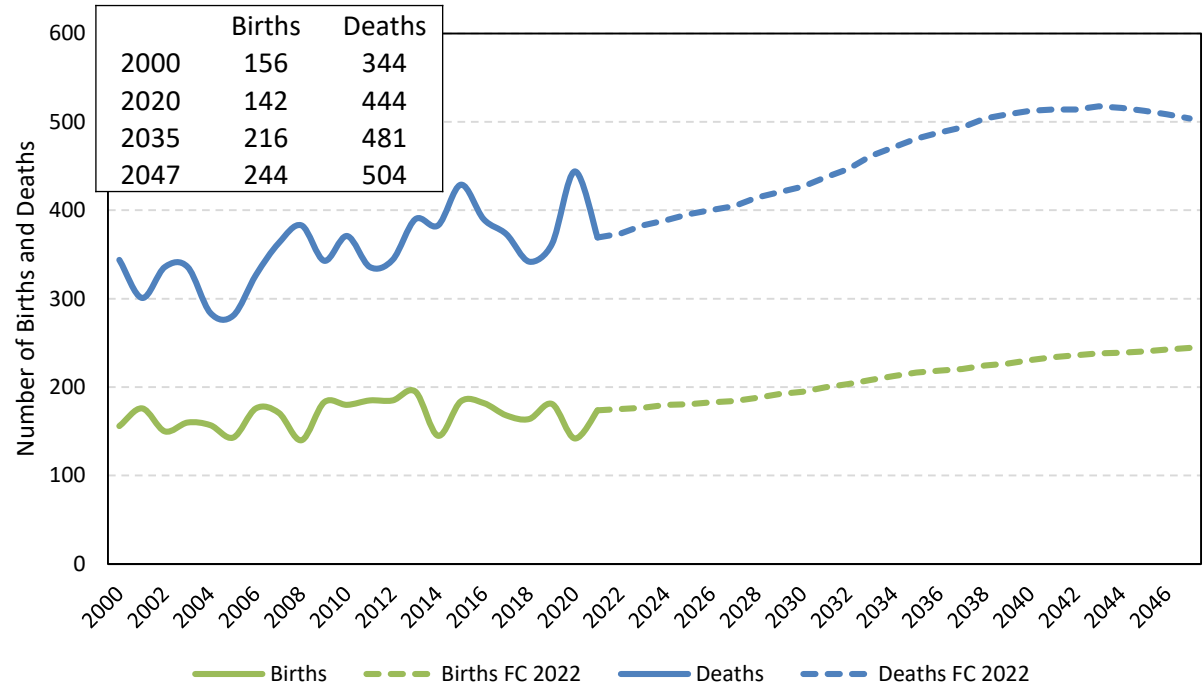


Sources: Oregon Health Authority, Center for Health Statistics. Calculations and forecast by Population Research Center (PRC).

Historical and Forecast Trends

The number of births is projected increase slightly over time, from 142 in 2020 to 244 in 2047. Deaths is projected to increase at a faster pace, reaching 504 in 2047.

Historical and Forecast Annual Births and Deaths (2000-2047)

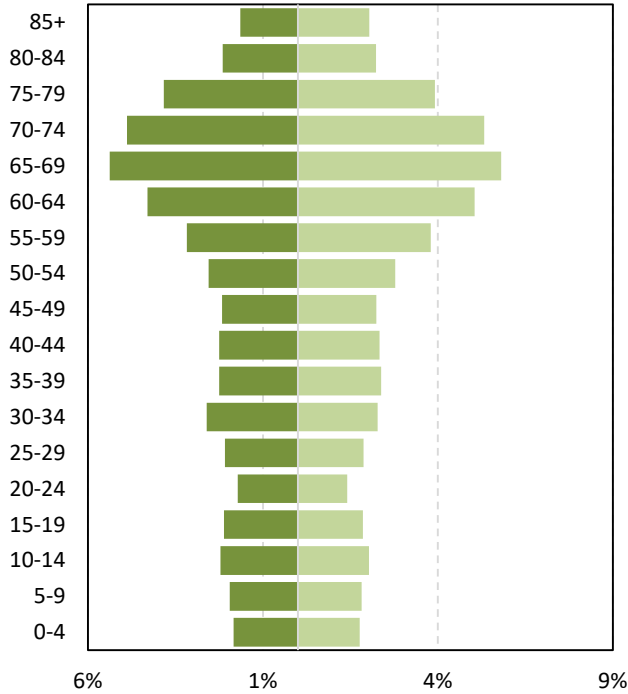


Source: Oregon Health Authority, Center for Health Statistics. Forecast by Population Research Center (PRC)

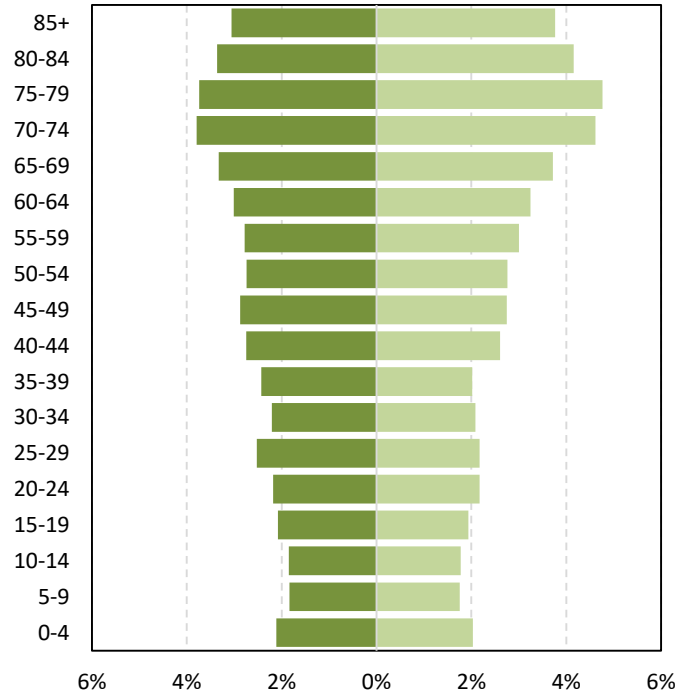
Historical and Forecast Trends

Population Age Structure

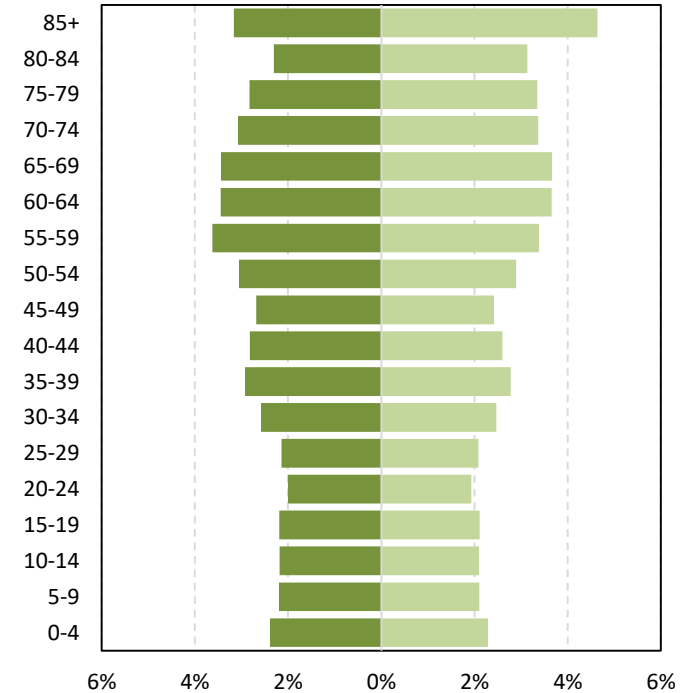
■ Male (2022) ■ Female (2022)



■ Male (2035) ■ Female (2035)



■ Male (2047) ■ Female (2047)



Source: Forecast by Population Research Center (PRC)

[Historical trend](#)

Historical and Forecast Trends

Historical and Forecast Population for Curry County and its Sub-Areas

	Historical			Forecast				
	2010	2020	AAGR (2010-2020)	2022	2047	2072	AAGR (2022-2047)	AAGR (2047-2072)
Curry County	22,364	23,446	0.5%	23,790	25,237	26,928	0.2%	0.3%
Larger Sub-Areas								
Brookings	9,600	10,360	0.8%	10,263	10,322	10,878	0.0%	0.2%
Smaller Sub-Areas								
Gold Beach	2,812	3,012	0.7%	2,986	2,885	2,687	-0.1%	-0.3%
Port Orford	1,865	1,785	-0.4%	1,706	1,696	1,693	0.0%	0.0%
Outside UGBs	8,087	8,289	0.2%	8,835	10,335	11,669	0.6%	0.5%

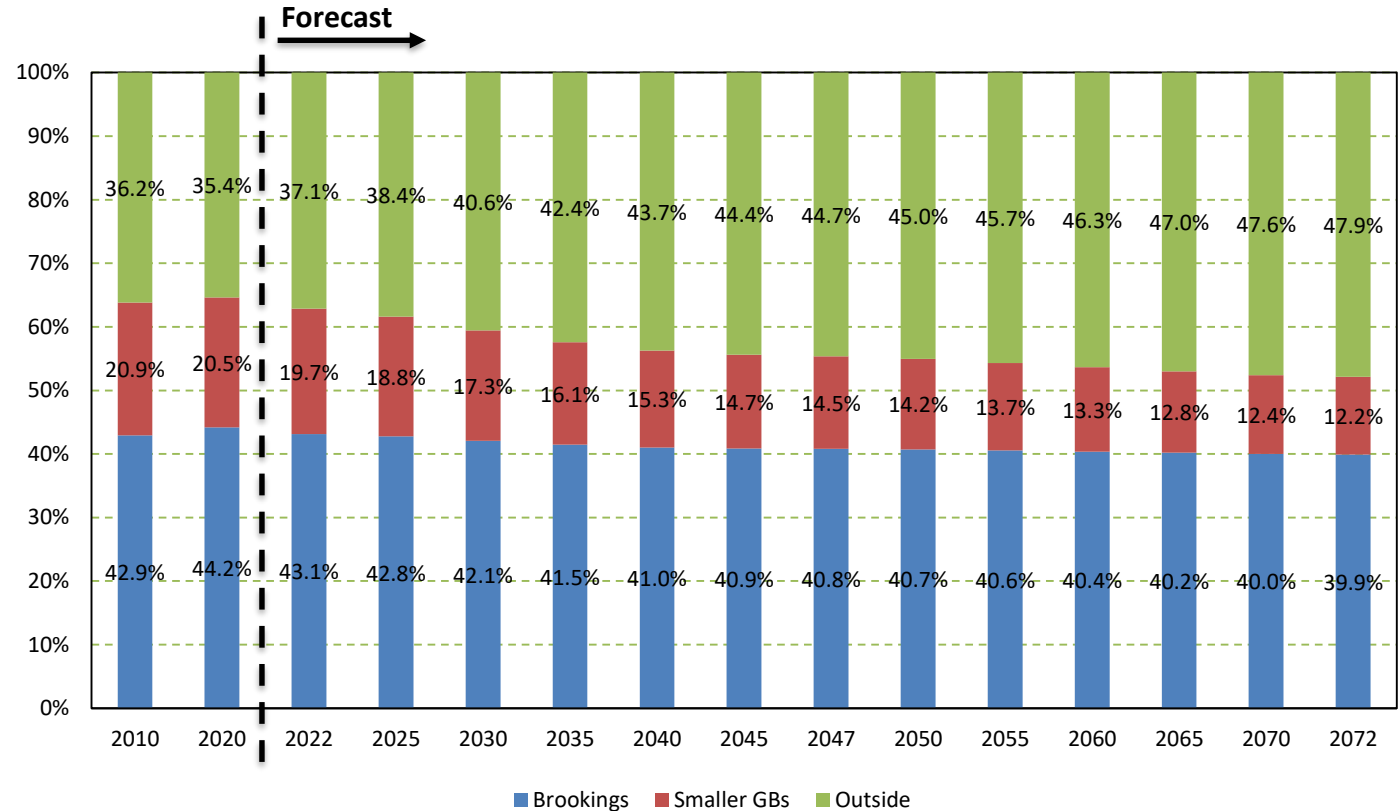
Note: UGBs are indicated by their city names. Larger sub-areas are those with populations over 8,000 in 2020.

Sources: U.S. Census Bureau; Forecast by Population Research Center (PRC)

Proposed Forecast Results

Coos County – Population Shares of Sub-Areas and Outside UGBs

This figure shows the percentage of the county population that is in each group of sub-areas. While the total county population is projected to increase over time, the share of population inside the UGBs tends to decline and the share outside the UGBs tend to increase.



Sources: U.S. Census Bureau; Forecast by Population Research Center (PRC).

Note: Sub-areas with populations under 8,000 in 2020 were considered smaller UGBs

Proposed Forecast Results



Population Distribution in Larger Sub-Areas

	Population	Share of County
Brookings UGB		
2022	10,263	43.1%
2047	10,322	40.9%
2072	10,878	40.4%

Sources: Forecast by Population Research Center (PRC)

Population Distribution in Smaller Sub-Areas

	Population			Share of County Population		
	2022	2047	2072	2022	2047	2072
Curry County	23,790	25,237	26,928			
Gold Beach	2,986	2,885	2,687	12.6%	11.4%	10.0%
Port Orford	1,706	1,696	1,693	7.2%	6.7%	6.3%
Outside UGBs	8,835	10,335	11,669	37.1%	41.0%	43.3%

Note: Smaller sub-areas refer to those with populations under 8,000 in 2020.
Sources: Forecast by Population Research Center (PRC)

1. We expect Curry County's population to grow gradually over time at an annual rate between 0.1% and 0.5%.
2. Annual net migration shows slight growth in absolute numbers, but mostly in the lower 300s.
3. The number of births grows over time, but the number of deaths is projected to increase at a faster pace. Deaths will continue to outnumber births throughout the forecast period.
4. The population ages forward over time, with the oldest age group account for a larger share of population. The youngest age groups also indicate a slight increase in shares in 2047.
5. The overall county-wide population is projected to grow, but the population share inside the UGBs may decrease. Brookings continues to have the largest share of population among all UGBs.

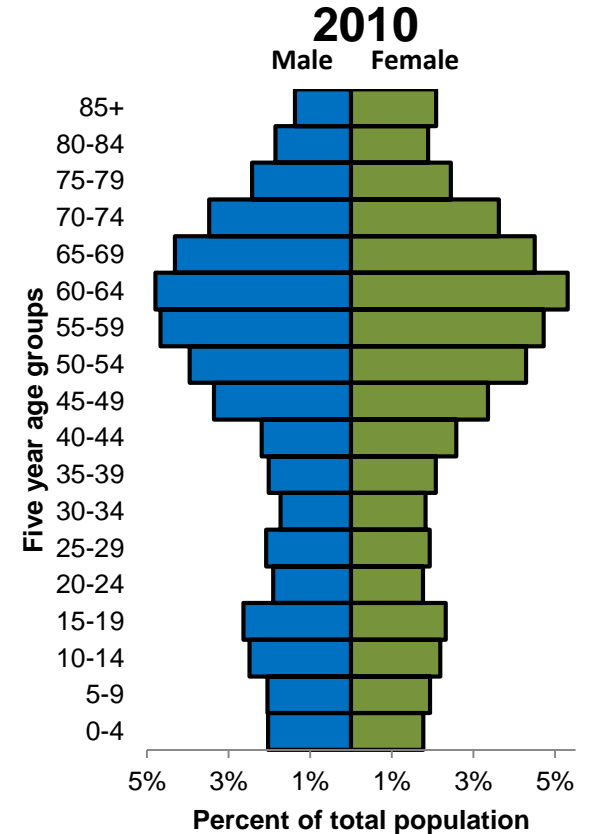
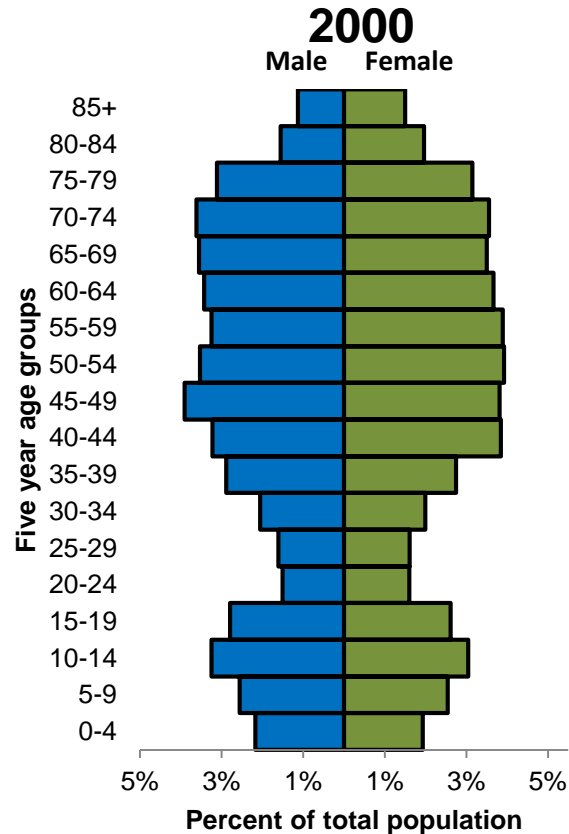
Race and ethnicity breakdown in 2010 and 2020

Hispanic or Latino and Race	2010		2020		Absolute Change	Relative Change
Total Population	22,364		23,446		1,082	4.8%
Hispanic or Latino (of any race)	1,201	5.4%	1,674	7.1%	473	39.4%
Not Hispanic or Latino	21,163	94.6%	21,772	92.9%	609	2.9%
White alone	19,837	88.7%	19,428	82.9%	-409	-2.1%
Black or African American alone	62	0.3%	77	0.3%	15	24.2%
American Indian and Alaska Native alone	391	1.7%	461	2.0%	70	17.9%
Asian alone	157	0.7%	214	0.9%	57	36.3%
Native Hawaiian and Other Pacific Islander alone	21	0.1%	25	0.1%	4	19.0%
Some Other Race alone	16	0.1%	125	0.5%	109	681.3%
Two or More Races	679	3.0%	1,442	6.2%	763	112.4%

Sources: US Census Bureau, 2010 and 2020 Decennial Census

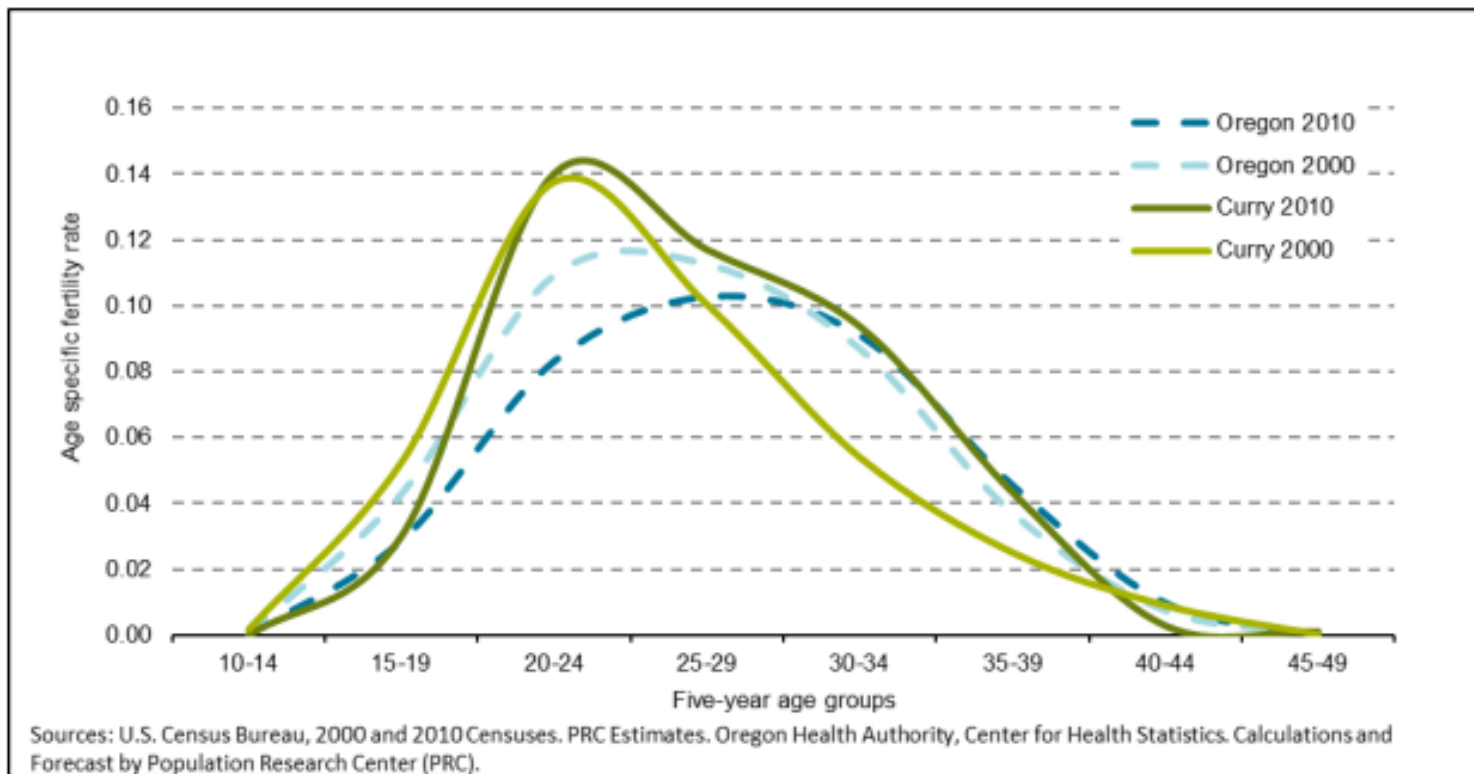
Additional Historical Trends

These two age pyramids show the population from the 2000 and 2010 Census. Over time, the population ages forward. The older population accounts for an increasing share of the total population while the share of younger populations decreased.



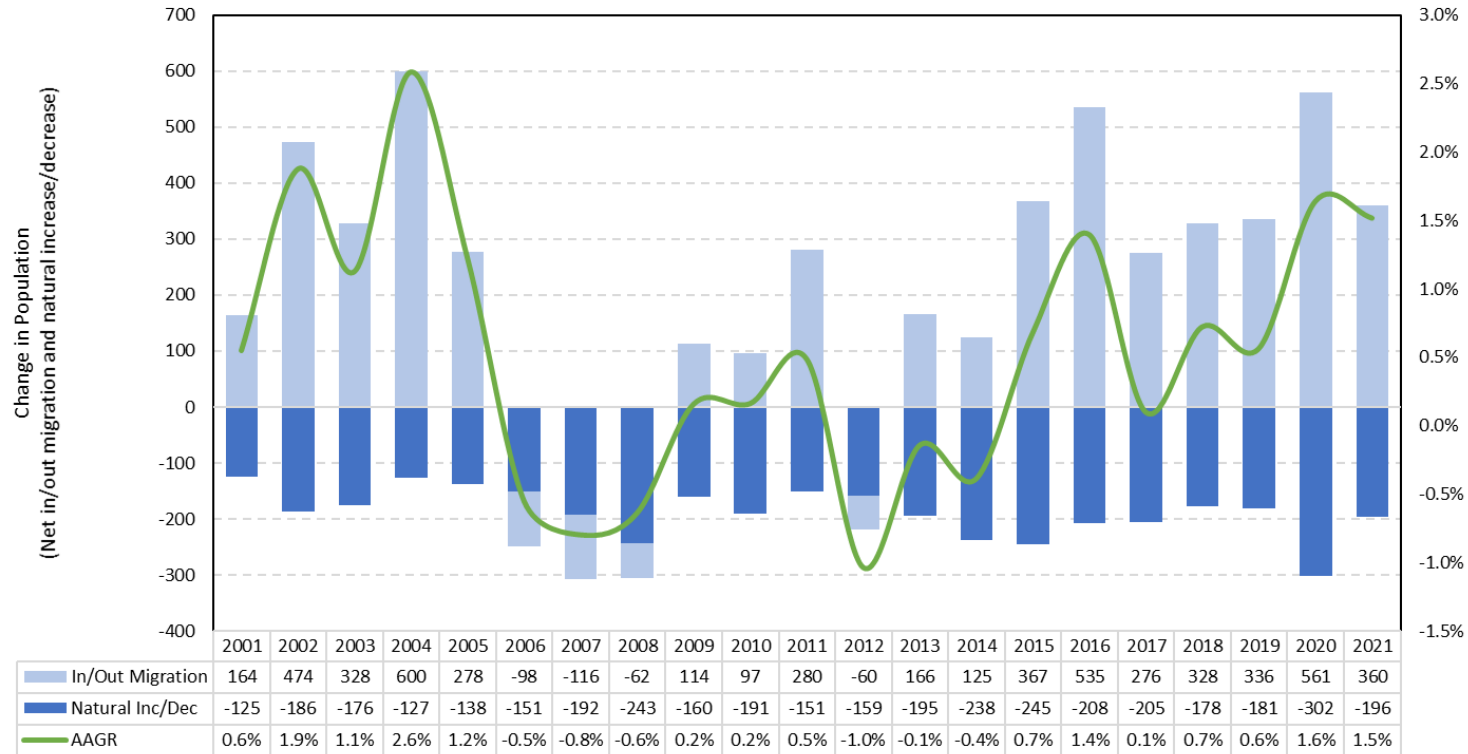
Sources: US Census Bureau, 2000 and 2010 Decennial Census

State and county level age-specific fertility rates



Additional Historical Trends

Components of Population Change and Average Annual Growth Rate (2001-2021)



Sources: US Census Bureau. Oregon Health Authority (OHA). Calculated by Population Research Center (PRC)