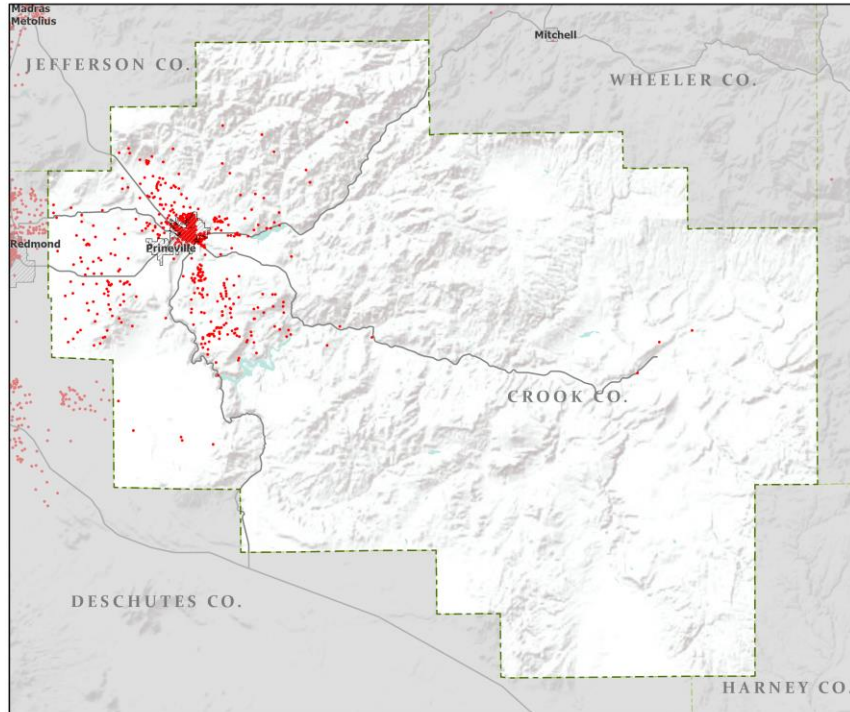




Oregon Population Forecast Program

Proposed Coordinated Forecasts for Crook County, its Urban Growth Boundaries (UGBs), and the Area Outside UGBs

March 2022



0 50 Miles

- Counties
 - Incorporated Cities
 - Highways
- 2010 POPULATION
- 1 Dot = 25 persons



Portland State University,
Population Research Center,
May 2021.
www.pdx.edu/prc

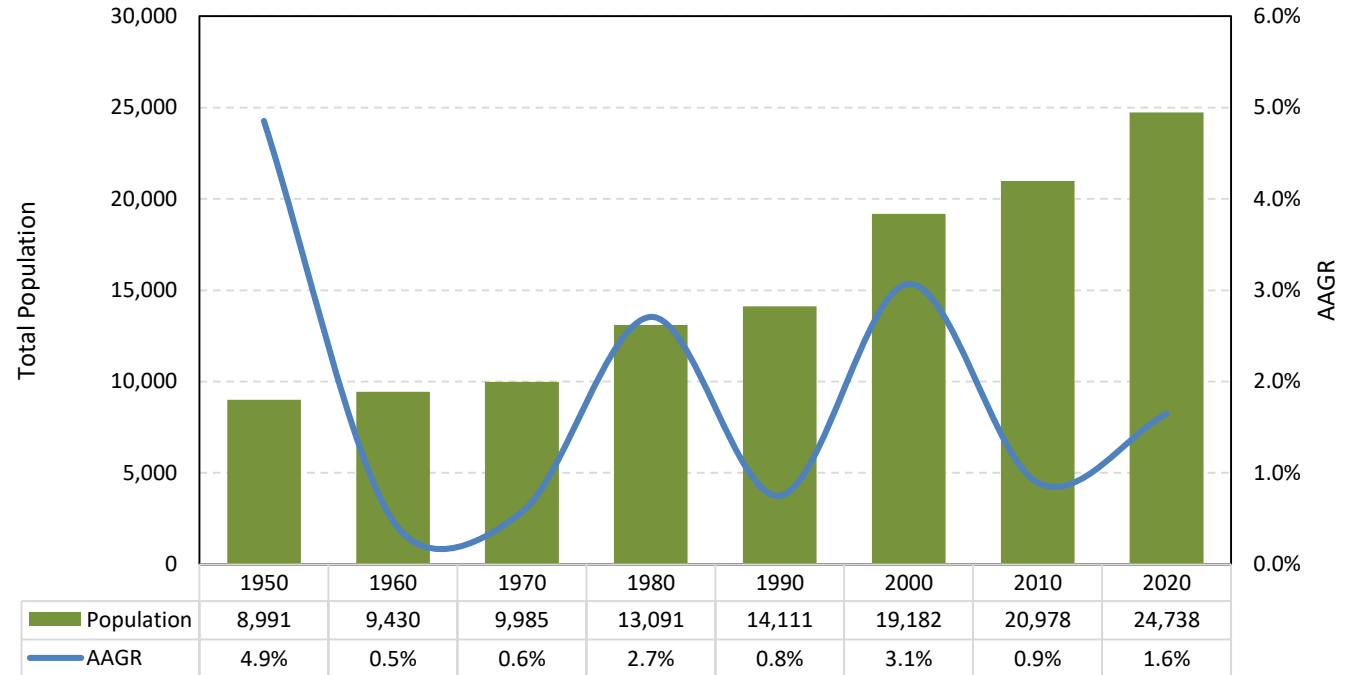
Sources: Esri, USGS, NOAA
State of Oregon GEO;
Oregon Dept. of
Transportation.

Crook County

Proposed Forecast Results

Crook County experienced the highest population growth in the 1950 Census. The AAGR reached two high points in the 1980 and 2000 Census. Population growth rate declined since 2000 but showed signs of increase in the 2020 Census.

Historical Census Population

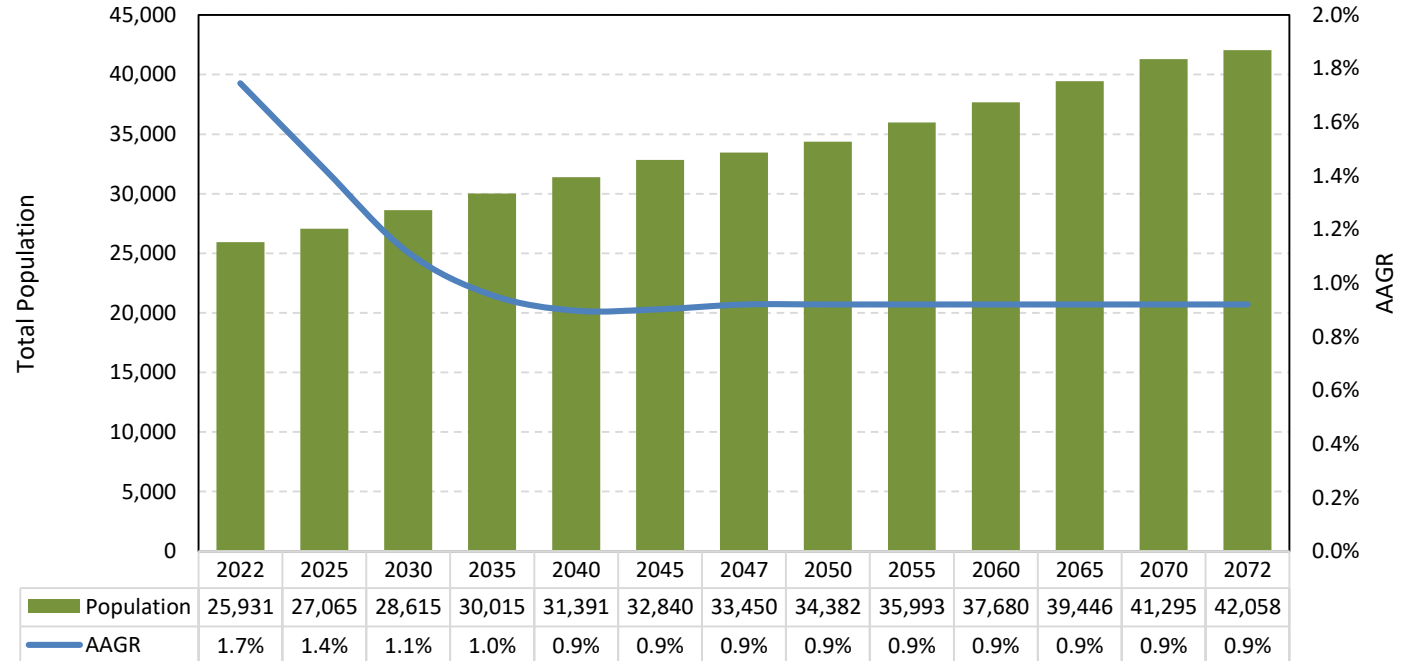


Source: US Census Bureau Decennial Census

Proposed Forecast Results

Crook County's population is projected maintain a relatively steady increase throughout the forecast period. The AAGR is expected to be at least 1% until 2035 and remain at approximately 0.9% afterwards. By 2072, the population reaches 42,058, up 48% from 2022.

Population Forecast (2022-2047)

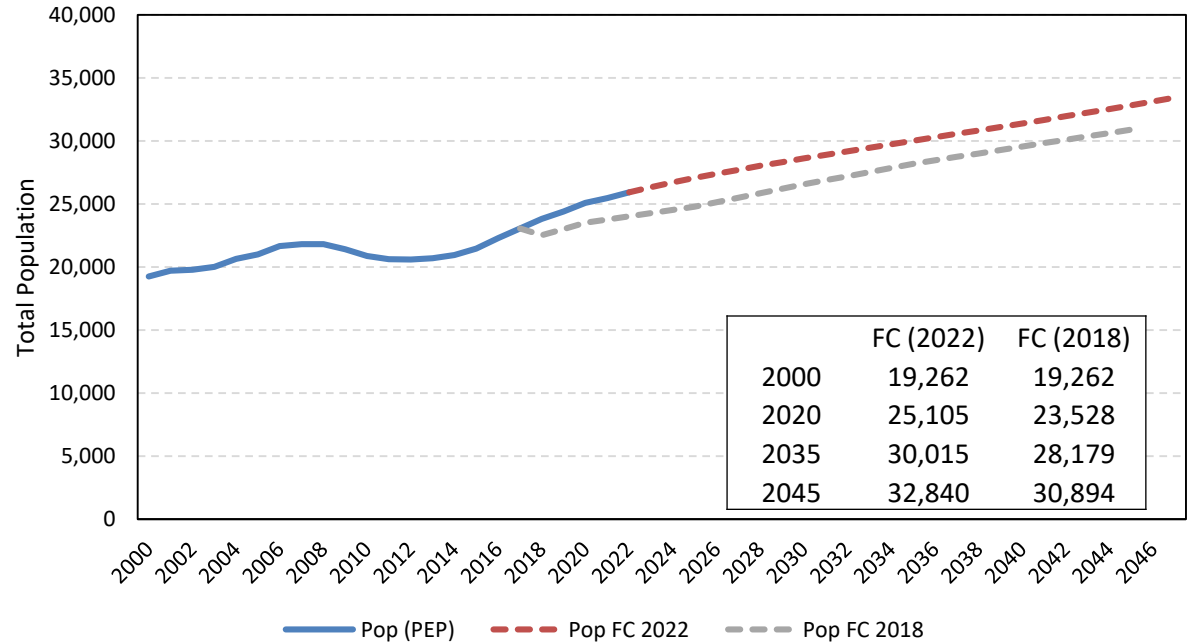


Source: Forecasted by Population Research Center (PRC)

Proposed Forecast Results

The current forecast is higher compared to the 2018 forecast. Current forecast puts Crook County's population at 32,840 by 2045, while the 2018 forecast projected a population of 30,894 by 2045. The growth trends of the two sets of forecast are similar.

Population Forecast Comparison



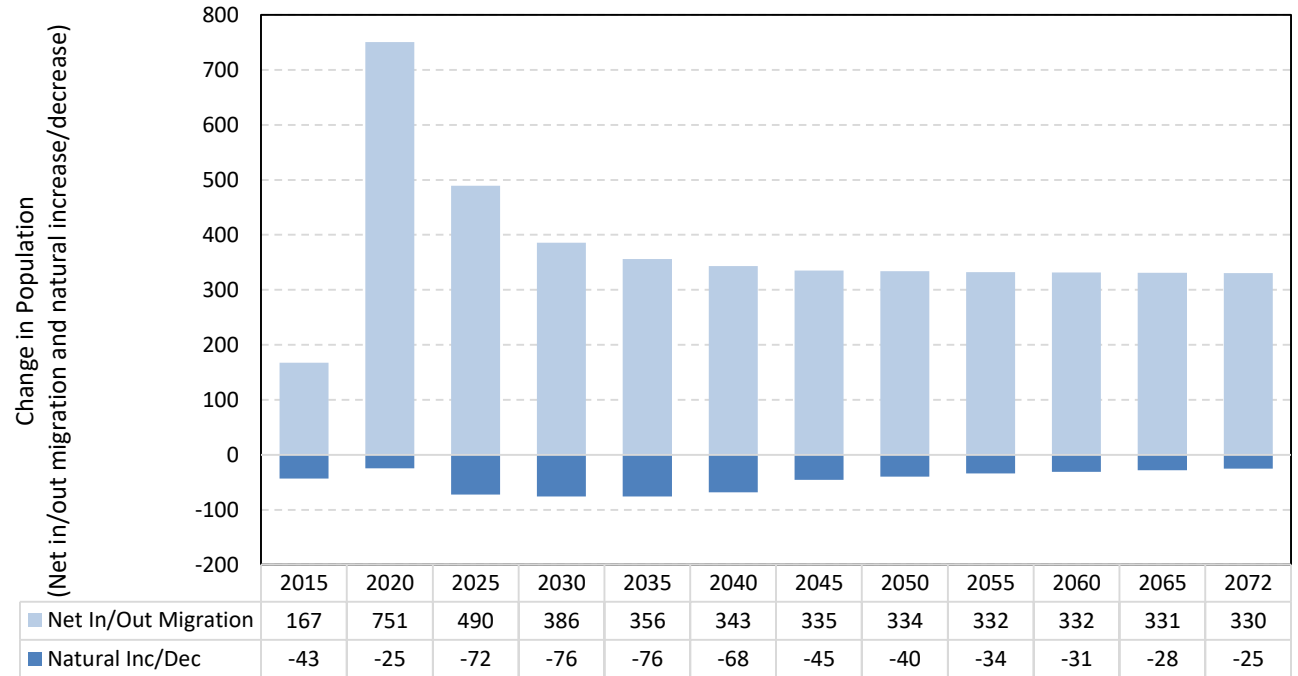
Source: US Census Bureau Population Estimates Program (PEP). Forecast by Population Research Center (PRC)

Note: PEP estimates may be different from the 2020 Census.

Proposed Forecast Results

Natural decrease in Crook County will continue throughout the forecast period. Net migration was relatively high in the 2015-2020 period. Annual net migration is projected to be in the mid 300s for most of the forecast period.

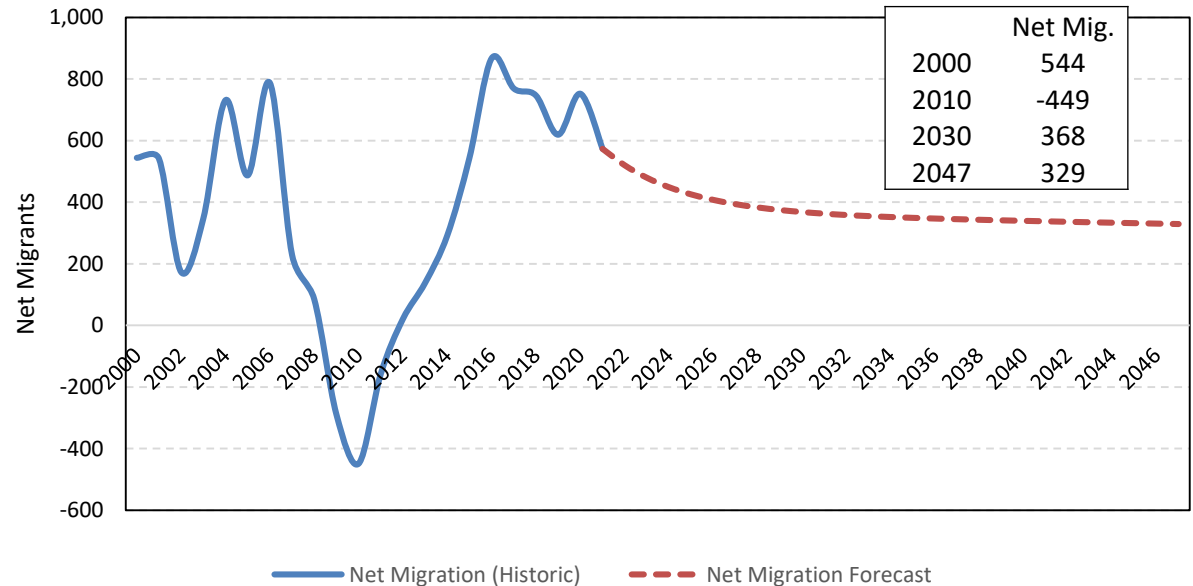
Components of Population Change by 5-year Intervals (2015-2072)



Source: Forecast by Population Research Center (PRC)

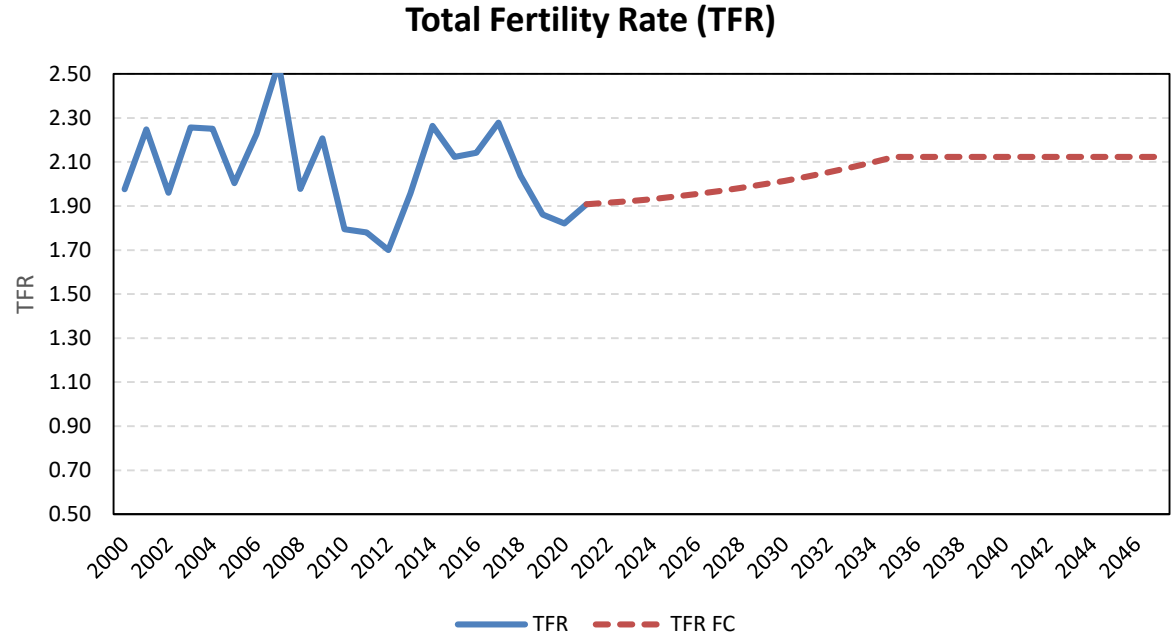
Annual net migration is projected to remain in the mid 300s. Historically, Crook County experienced relatively low net migration around 2010, which may be related to the economic recession. Net migration reached a peak in 2016, however, the projected migration is similar to the average historical average trend in the county.

Annual Net Migration (2000-2047)



Sources: US Census Bureau. Forecast by Population Research Center (PRC).

The total fertility rate (TFR) for women aged 15-44 is projected to increase slightly over time, reaching 2.1 in 2034, an increase from the 2018-2020 period. This slight increase plays a role in adding the share of younger population in the county.

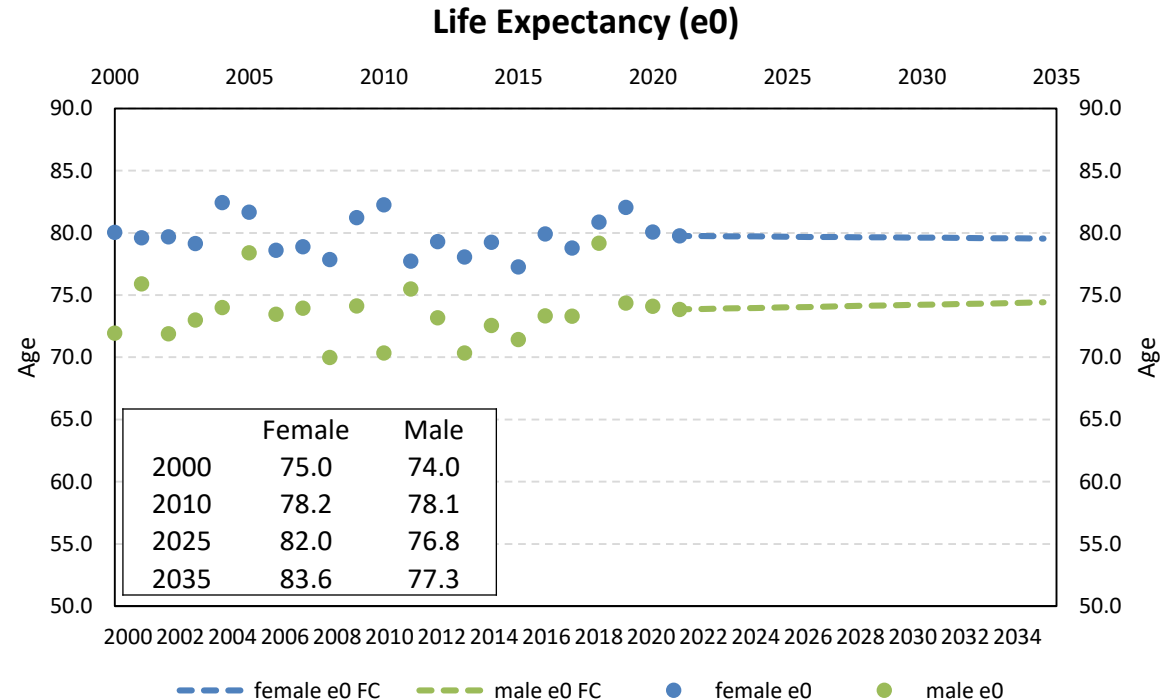


Sources: Oregon Health Authority, Center for Health Statistics. Calculations and forecast by Population Research Center (PRC).

Historical and Forecast Trends

Life expectancy for both male and female is projected to increase in the next decades. Life expectancy for female increases faster than male.

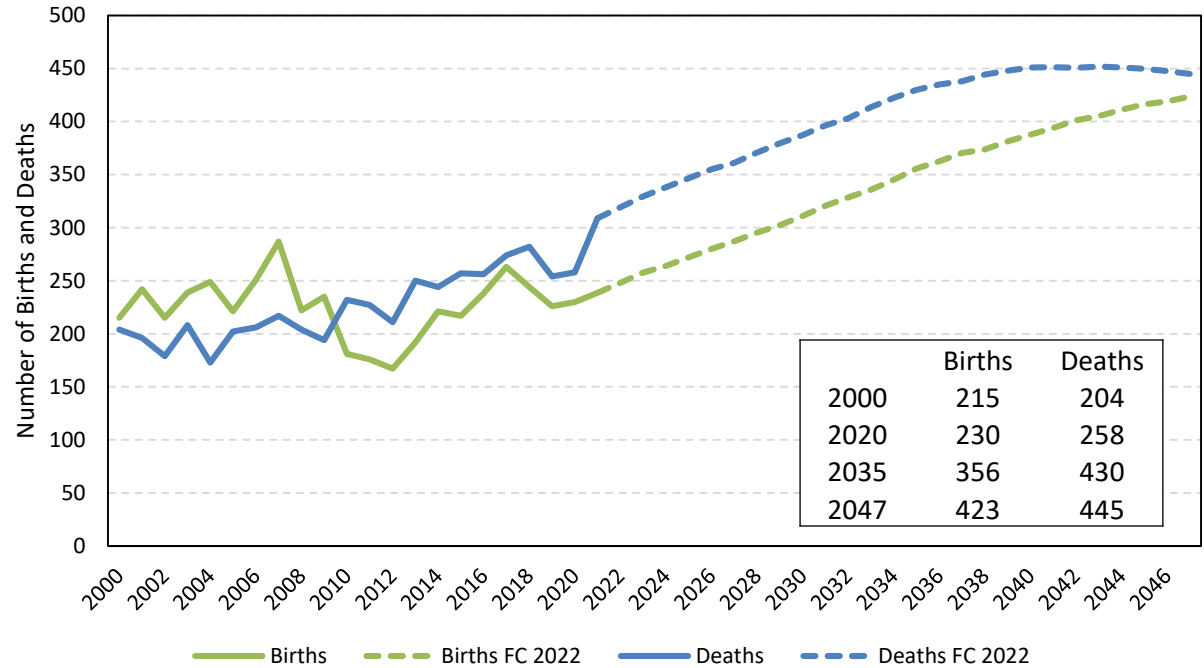
The increase in life expectancy plays a role in the increasing of older population. The result would be that older population taking a larger share of the total population.



Sources: Oregon Health Authority, Center for Health Statistics. Calculations and forecast by Population Research Center (PRC).

The number of births and deaths both increases. The increase in births may be associated with the change in age structure and the higher fertility rate. The total fertility rate is projected to increase to over 2.0 during the forecast period.

Historical and Forecast Annual Births and Deaths (2000-2047)

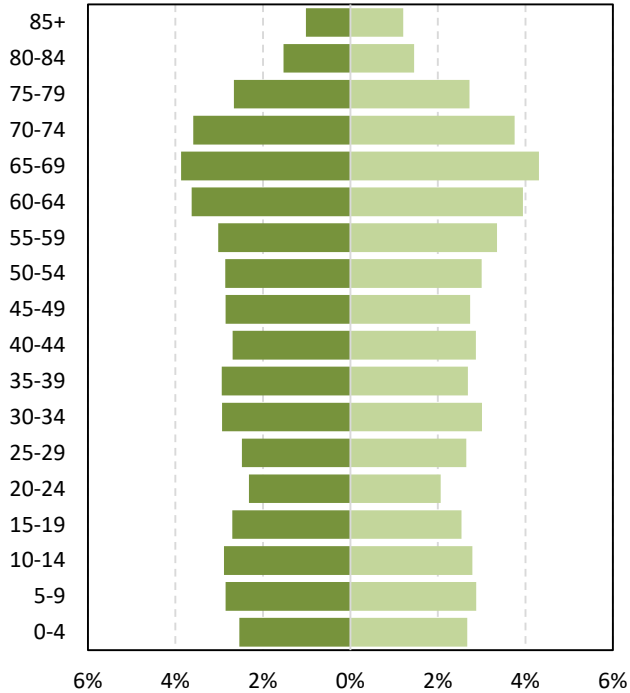


Source: Oregon Health Authority, Center for Health Statistics. Forecast by Population Research Center (PRC)

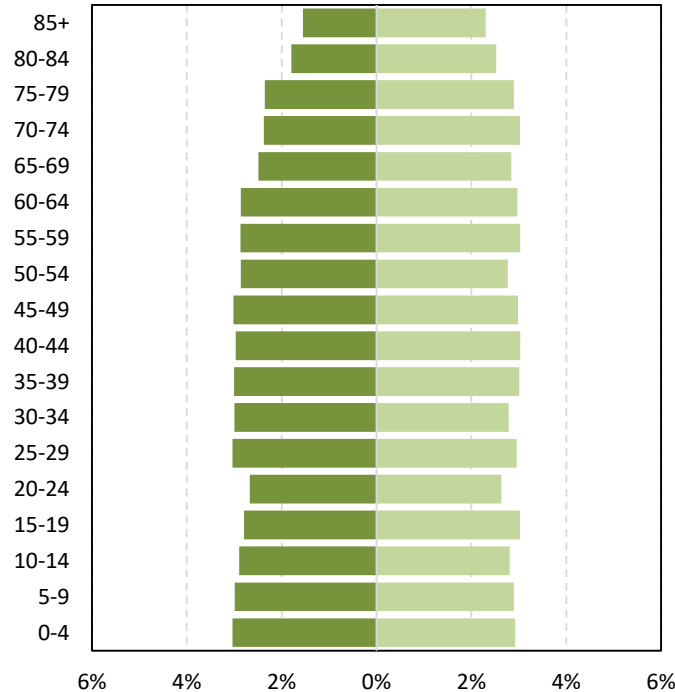
Historical and Forecast Trends

Population Age Structure

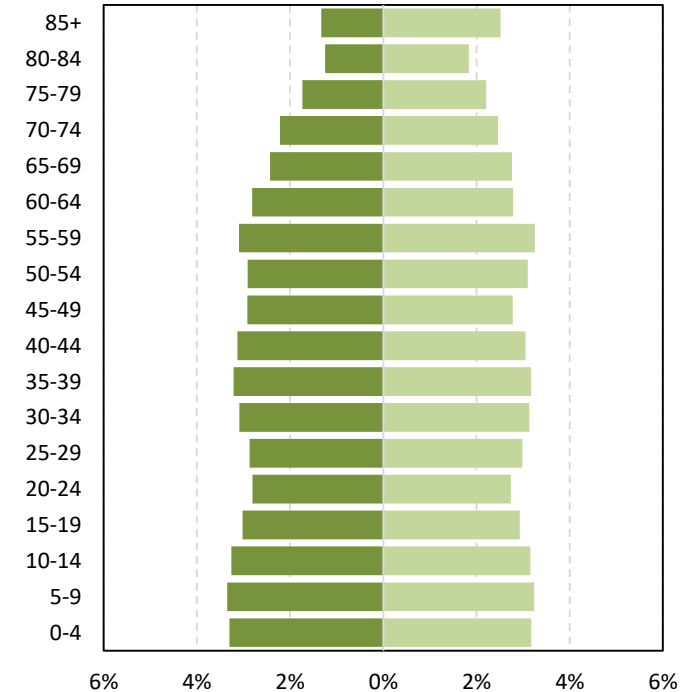
■ Male (2022) ■ Female (2022)



■ Male (2035) ■ Female (2035)



■ Male (2047) ■ Female (2047)



Source: Forecast by Population Research Center (PRC)
[Historical trend](#)

Historical and Forecast Trends

Historical and Forecast Population for Crook County and its Sub-Areas

| | Historical | | | Forecast | | | | |
|-------------------------|------------|--------|---------------------|----------|--------|--------|---------------------|---------------------|
| | 2010 | 2020 | AAGR (2010-2020) | 2022 | 2047 | 2072 | AAGR (2022-2047) | AAGR (2047-2072) |
| Crook County | 20,978 | 24,738 | 1.6% | 25,931 | 33,450 | 42,058 | 1.0% | 0.9% |
| Larger Sub-Areas | | | | | | | | |
| Prineville | 13,254 | 13,693 | 0.3% | 14,325 | 18,528 | 24,885 | 1.0% | 1.2% |
| Outside UGBs | 7,724 | 11,045 | 3.6% | 11,606 | 14,923 | 17,174 | 1.0% | 0.6% |

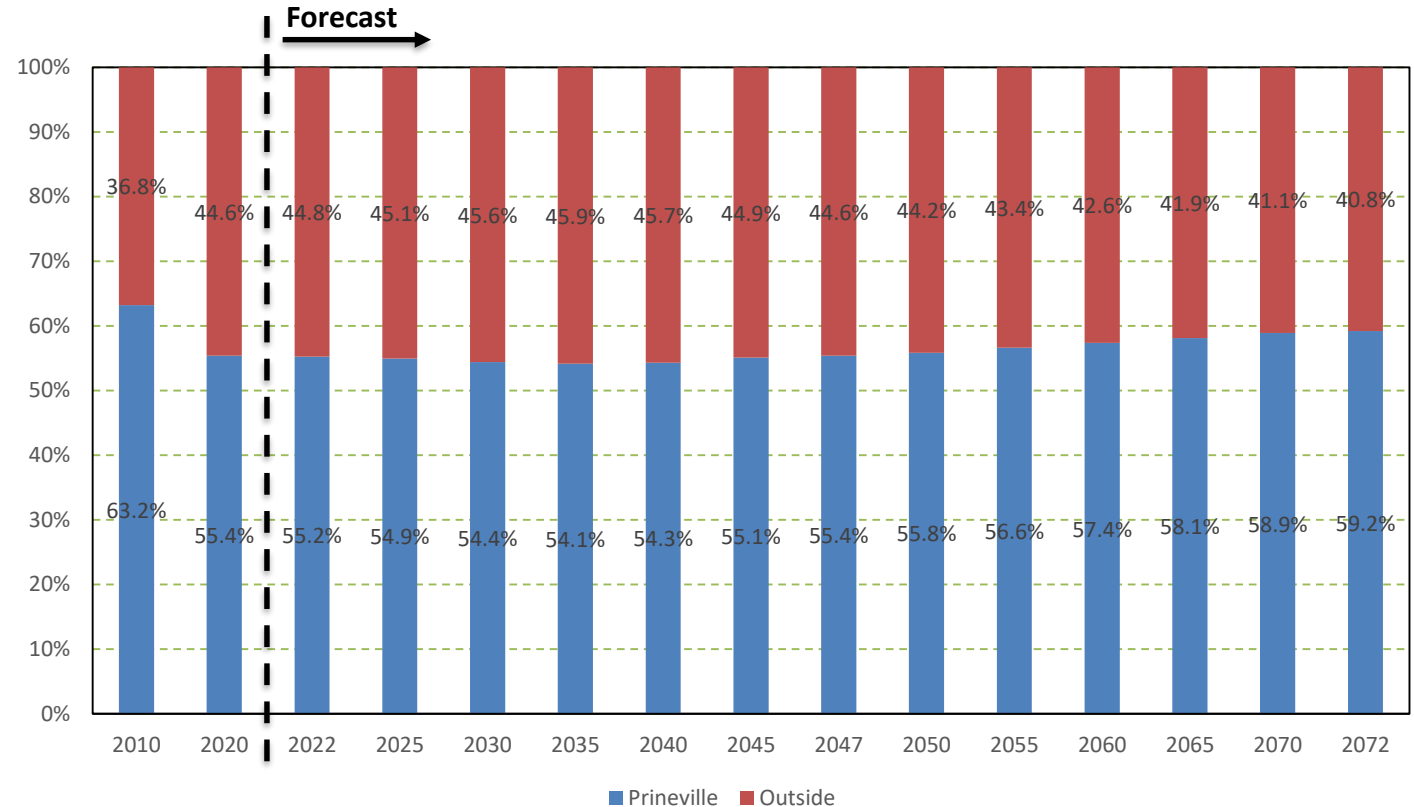
Note: UGBs are indicated by their city names. Larger sub-areas are those with populations over 8,000 in 2020.

Sources: U.S. Census Bureau; Forecast by Population Research Center (PRC)

Proposed Forecast Results

Crook County – Population Shares of Sub-Areas and Outside UGBs

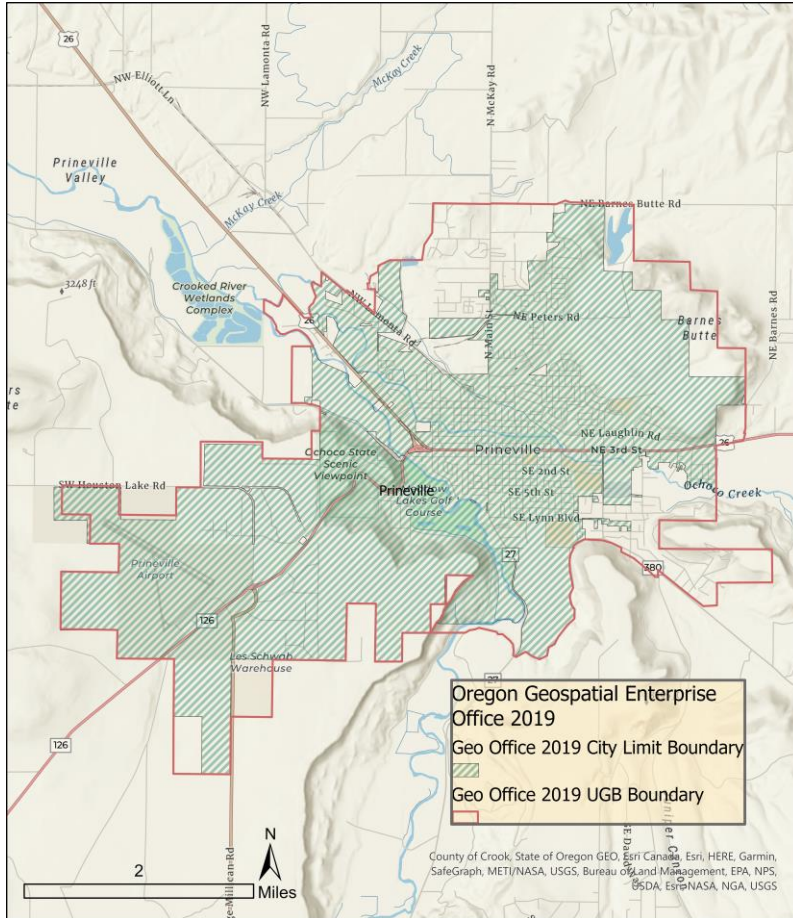
This figure shows the percentage of the county population that is in each group of sub-areas. Over time, the share of population living inside the UGBs increase while the share of population outside of UGBs decrease. The Prineville UGB will account for 59% of the total county population in 2072.



Sources: U.S. Census Bureau; Forecast by Population Research Center (PRC).

Note: Sub-areas with populations under 8,000 in 2020 were considered smaller UGBs

Proposed Forecast Results



Population Distribution in Larger Sub-Areas

| | Population | Share of County |
|-----------------------|------------|-----------------|
| Prineville UGB | | |
| 2022 | 14,325 | 55.2% |
| 2047 | 18,528 | 55.4% |
| 2072 | 24,885 | 59.2% |

Sources: Forecast by Population Research Center (PRC)

1. We expect Crook County's population to increase at approximately 1% on average throughout the forecast period. The county population will reach 42,058 in 2072, compared to 25,931 in 2022.
2. Net migration is relatively stable and remains in the mid 300s every year.
3. Total fertility rate is projected to increase slightly over time, which contributes to the increase in births in the forecast. Deaths will also increase as the population ages.
4. The population share of Prineville UGB is projected to increase over time while the population share outside of the UGB decreases.
5. The age structure is projected to change during the next 50 years. While older population increases, younger population shows increase in proportion as well.

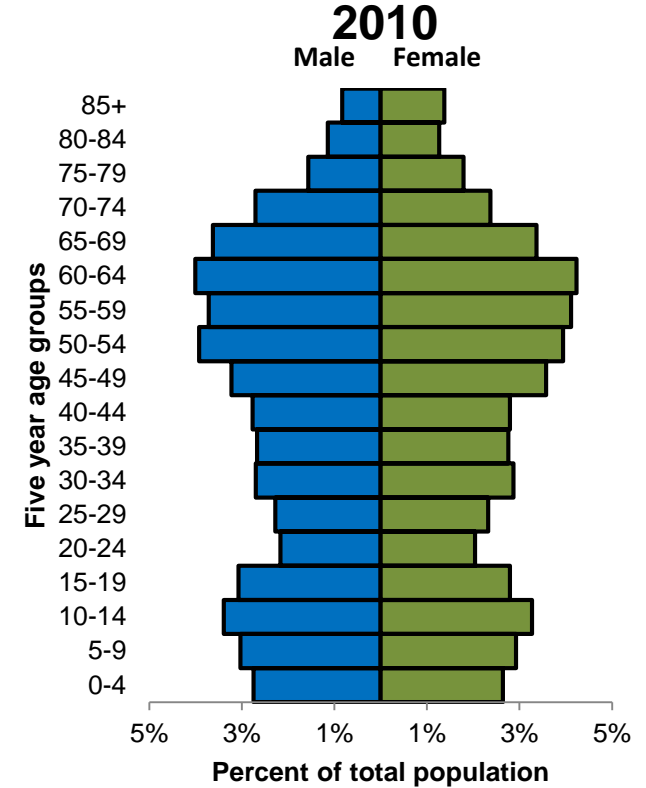
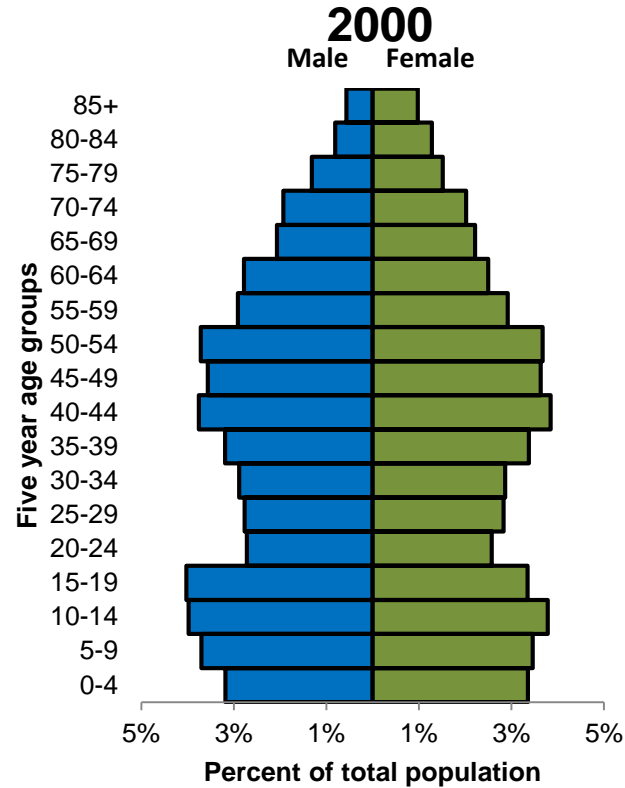
Race and ethnicity breakdown in 2010 and 2020

| Hispanic or Latino and Race | 2010 | | 2020 | | Absolute Change | Relative Change |
|---|--------|-------|--------|-------|-----------------|-----------------|
| Total Population | 20,978 | | 24,738 | | 3,760 | 17.9% |
| Hispanic or Latino (of any race) | 1,463 | 7.0% | 1,803 | 7.3% | 340 | 23.2% |
| Not Hispanic or Latino | 19,515 | 93.0% | 22,935 | 92.7% | 3,420 | 17.5% |
| White alone | 18,758 | 89.4% | 20,874 | 84.4% | 2,116 | 11.3% |
| Black or African American alone | 30 | 0.1% | 78 | 0.3% | 48 | 160.0% |
| American Indian and Alaska Native alone | 273 | 1.3% | 262 | 1.1% | -11 | -4.0% |
| Asian alone | 96 | 0.5% | 114 | 0.5% | 18 | 18.8% |
| Native Hawaiian and Other Pacific Islander alone | 11 | 0.1% | 23 | 0.1% | 12 | 109.1% |
| Some Other Race alone | 12 | 0.1% | 102 | 0.4% | 90 | 750.0% |
| Two or More Races | 335 | 1.6% | 1,482 | 6.0% | 1,147 | 342.4% |

Sources: US Census Bureau, 2010 and 2020 Decennial Census

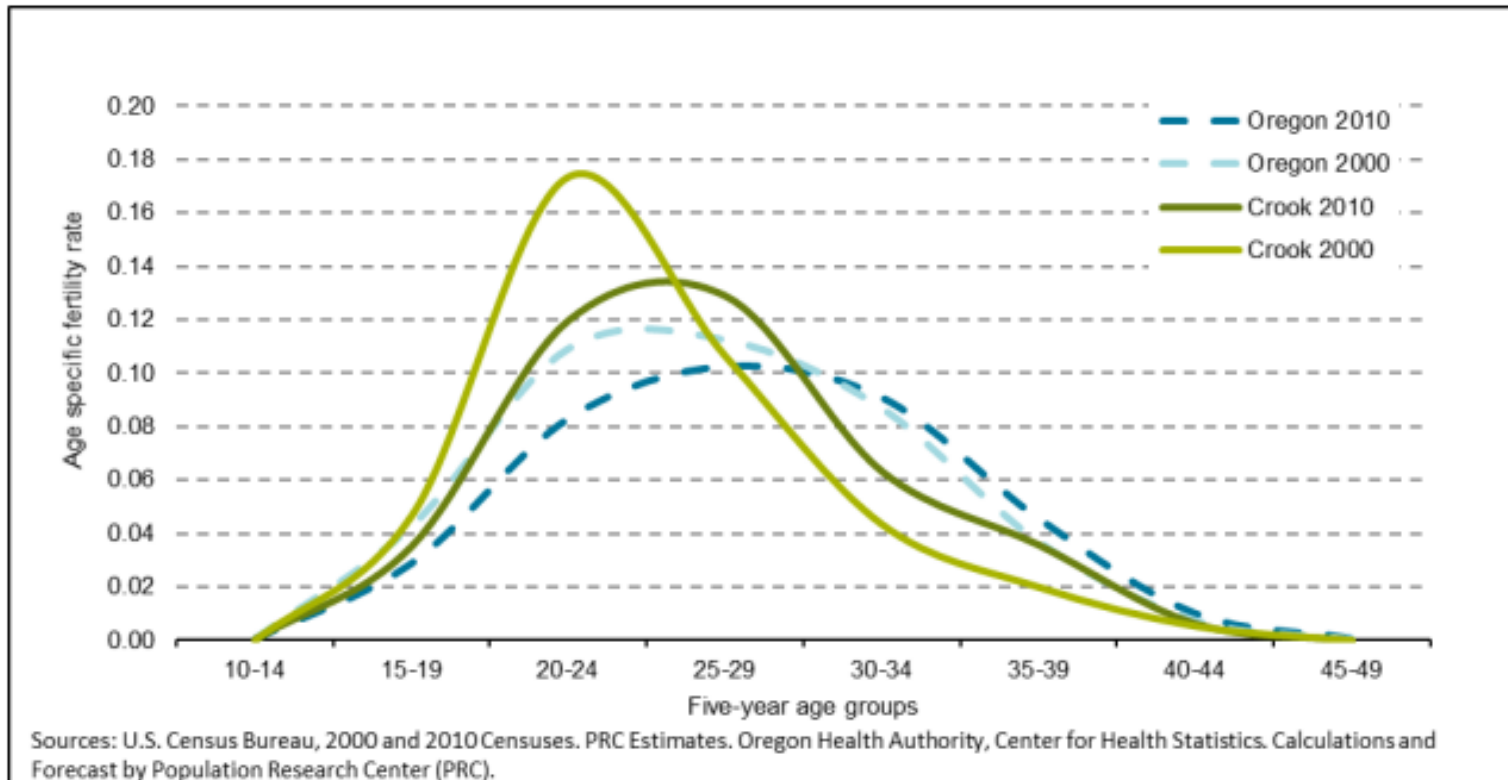
Additional Historical Trends

These two age pyramids show the population from the 2000 and 2010 Census. Over time, the population ages forward. The older population accounts for an increasing share of the total population.



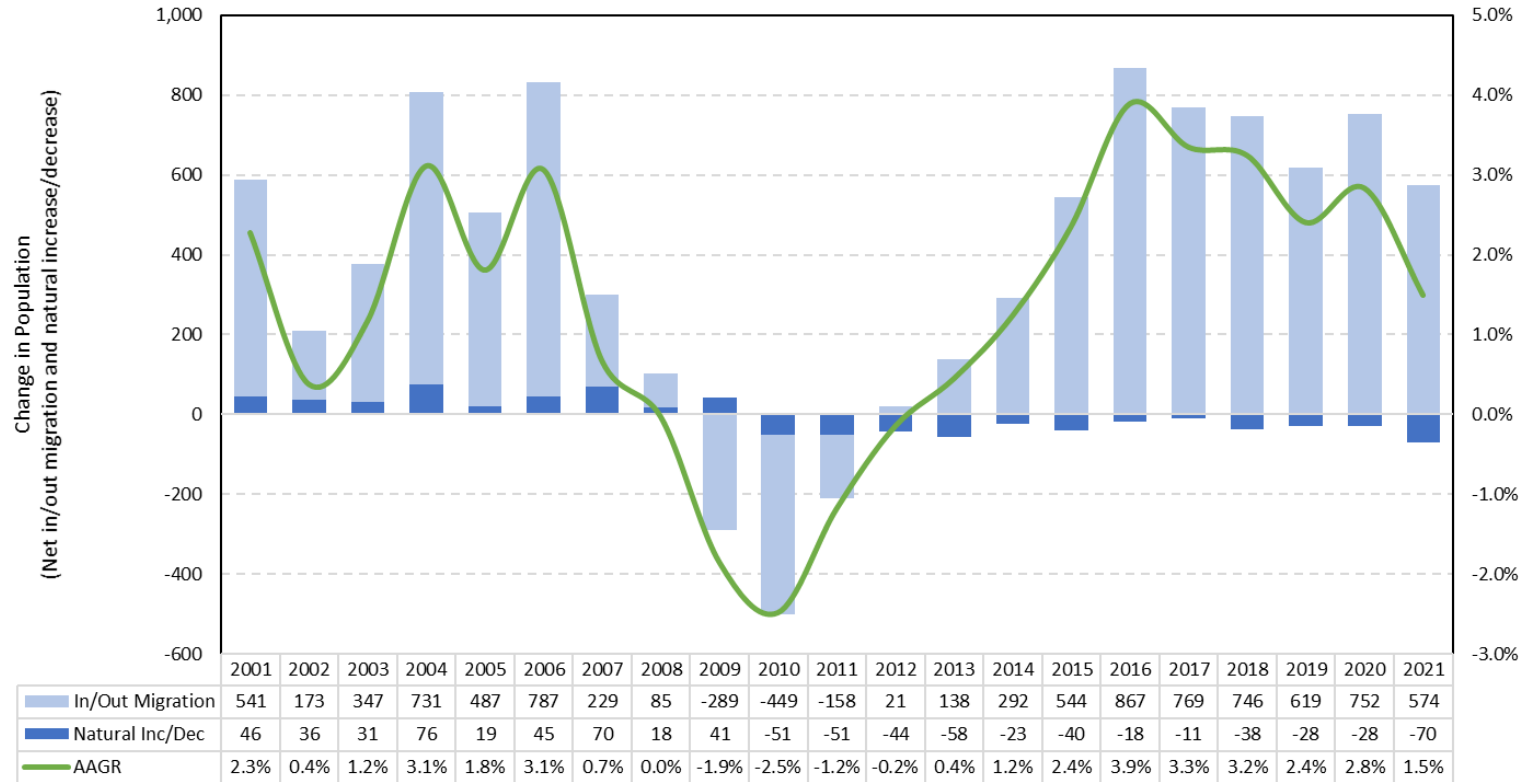
Sources: US Census Bureau, 2000 and 2010 Decennial Census

State and county level age-specific fertility rates



Additional Historical Trends

Components of Population Change and Average Annual Growth Rate (2001-2021)



Sources: US Census Bureau. Oregon Health Authority (OHA). Calculated by Population Research Center (PRC)