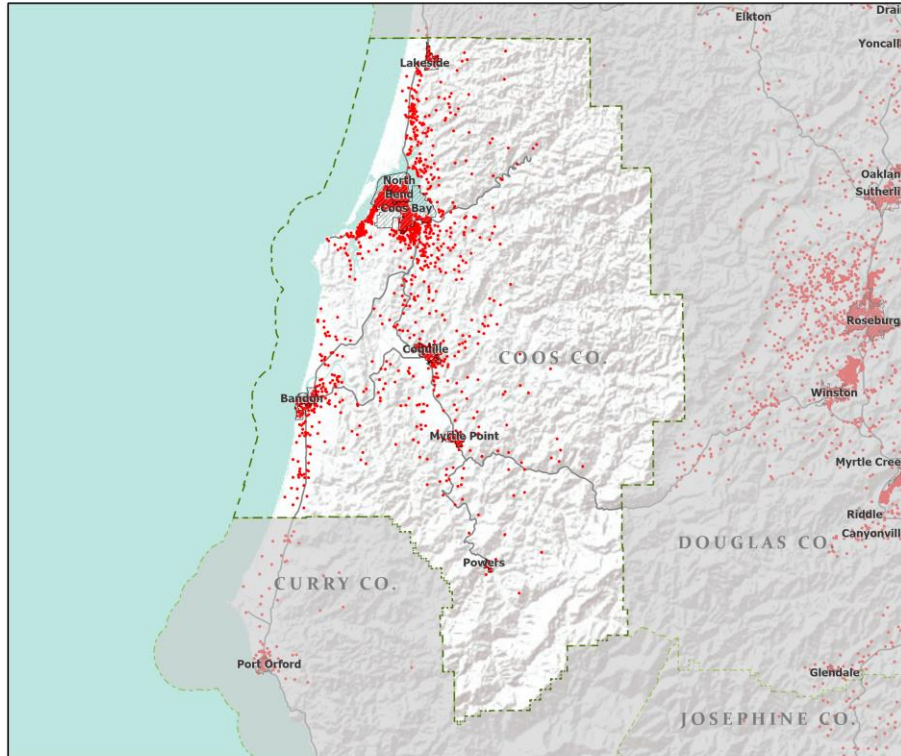






Oregon Population Forecast Program

Proposed Coordinated Forecasts for Coos County, its
Urban Growth Boundaries (UGBs), and the Area
Outside UGBs

March 2022

Population: Coos County



-  Counties
-  Incorporated Cities
-  Highways
- 2010 POPULATION
-  1 Dot = 25 persons

Coos County



Portland State University,
Population Research Center,
May 2021.
www.pdx.edu/prc

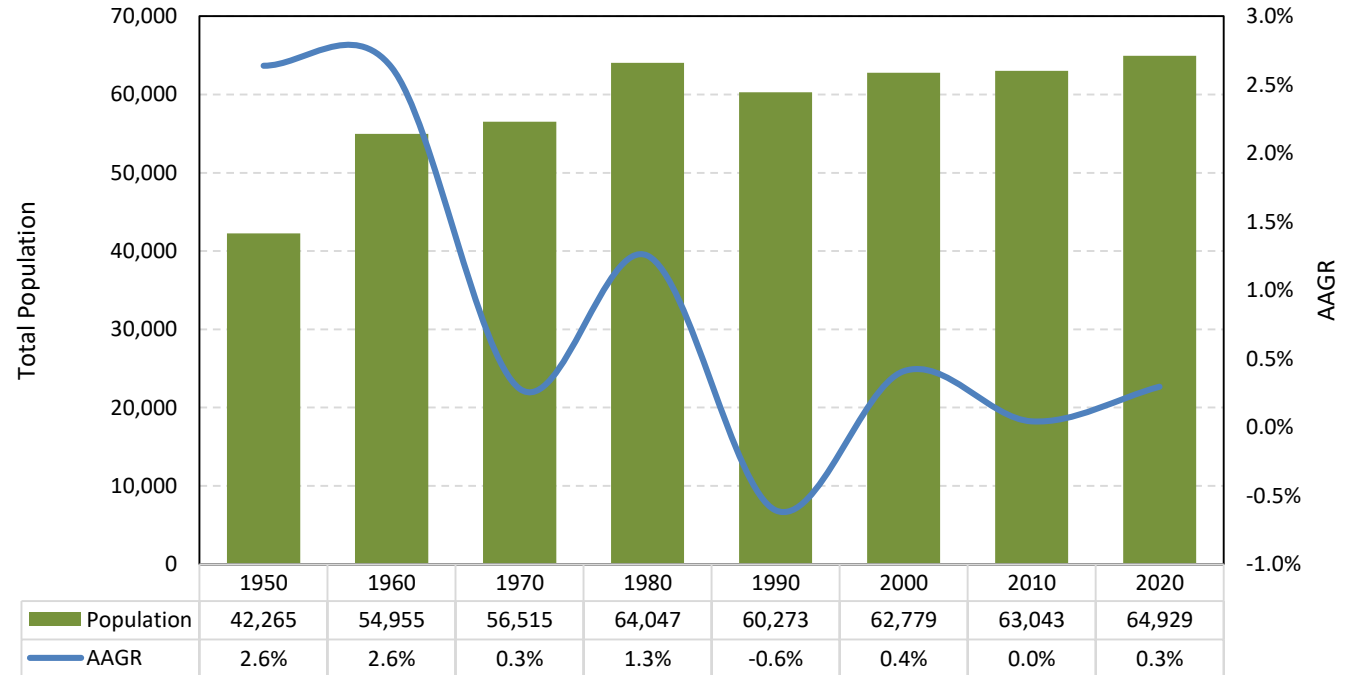
Sources: Esri, USGS, NOAA
State of Oregon GEO;
Oregon Dept. of
Transportation.

0 60 Miles

Proposed Forecast Results

Coos County experienced the highest population growth in 1950-1960 and maintained an average annual growth rate of less than 0.5% for the past three decades.

Historical Census Population

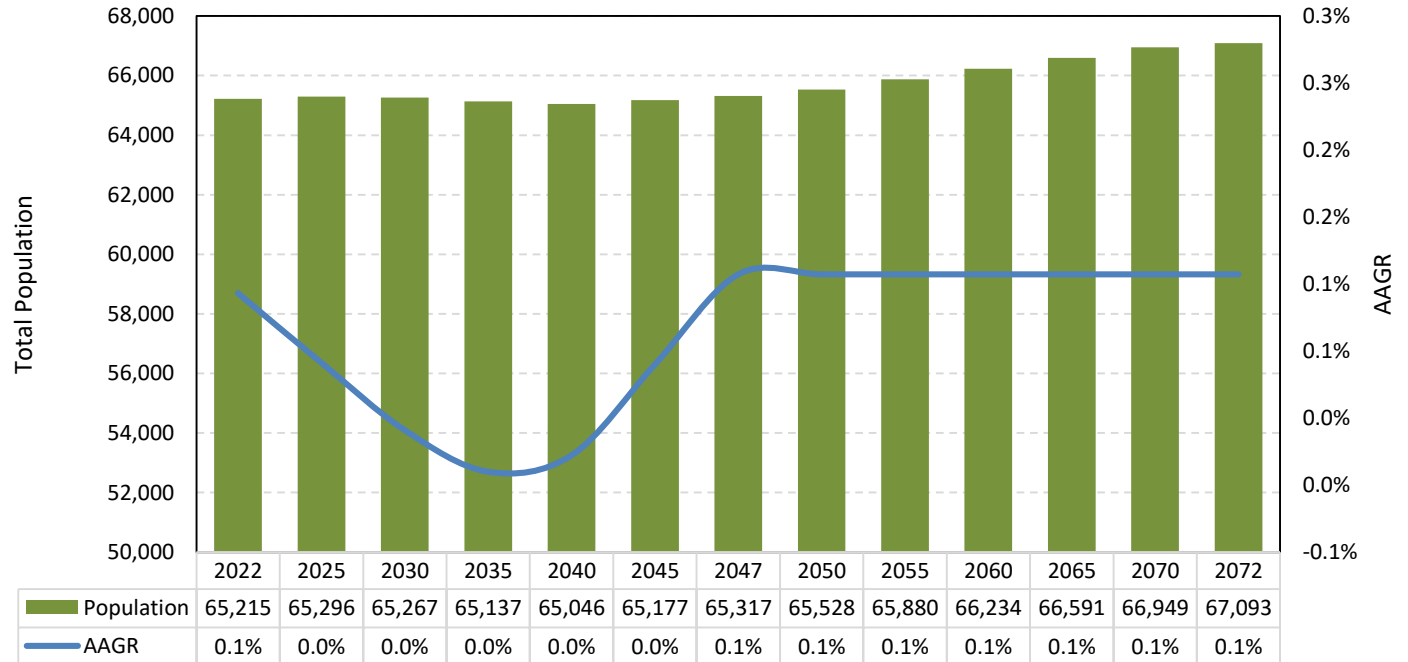


Source: US Census Bureau Decennial Census

Proposed Forecast Results

Coos County's population is projected to remain stable and show little growth throughout the forecast period. The overall AAGR for the county ranges from 0% to 0.1%.

Population Forecast (2022-2047)

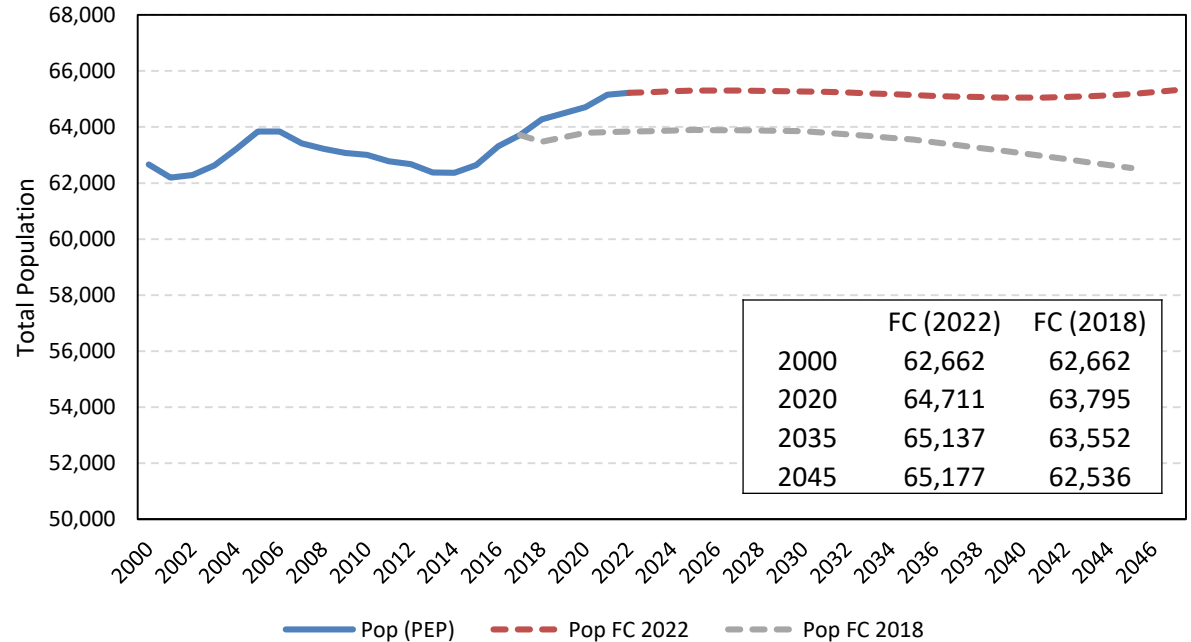


Source: Forecasted by Population Research Center (PRC)

Proposed Forecast Results

The current forecast is higher compared to the 2018 forecast. Current forecast puts Coos County's population at 65,177 by 2045, while the 2018 forecast projected a population of 62,536 by 2045.

Population Forecast Comparison

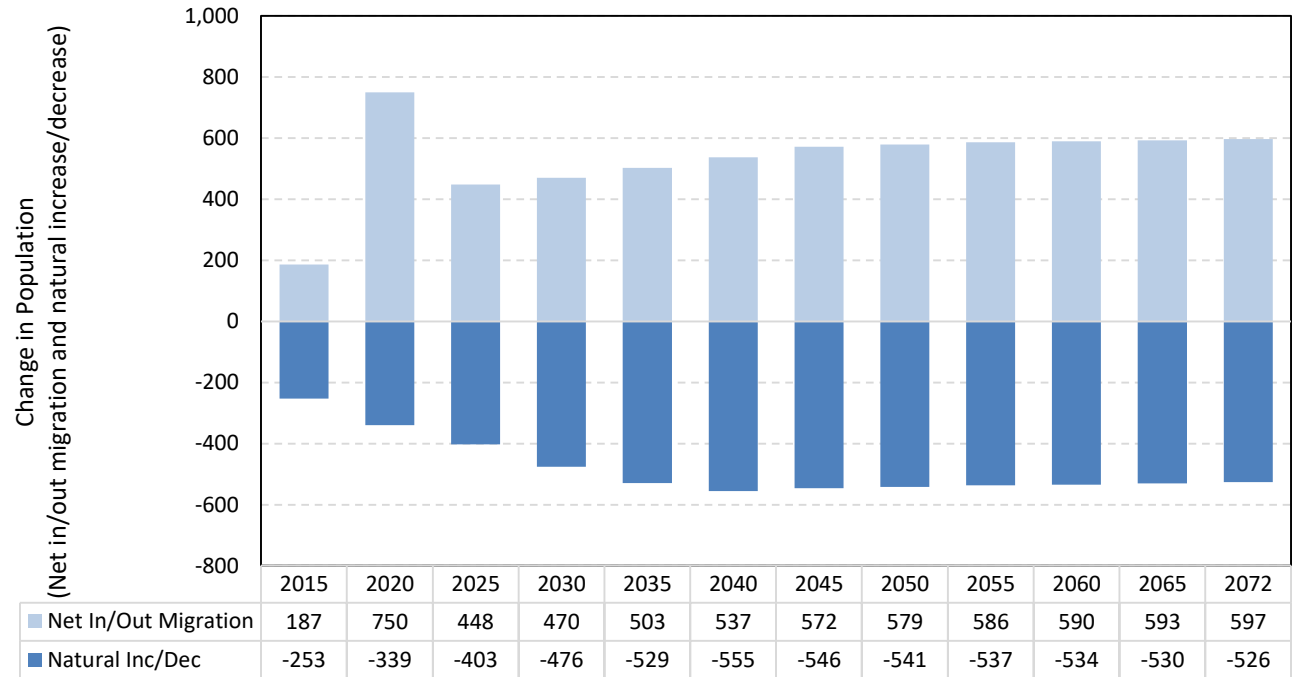


Source: US Census Bureau Population Estimates Program (PEP). Forecast by Population Research Center (PRC)
Note: PEP estimates may be different from the 2020 Census.

Proposed Forecast Results

Natural decrease in Coos County will continue throughout the forecast period. Net migration is projected to increase slightly over time to nearly 600 by 2072.

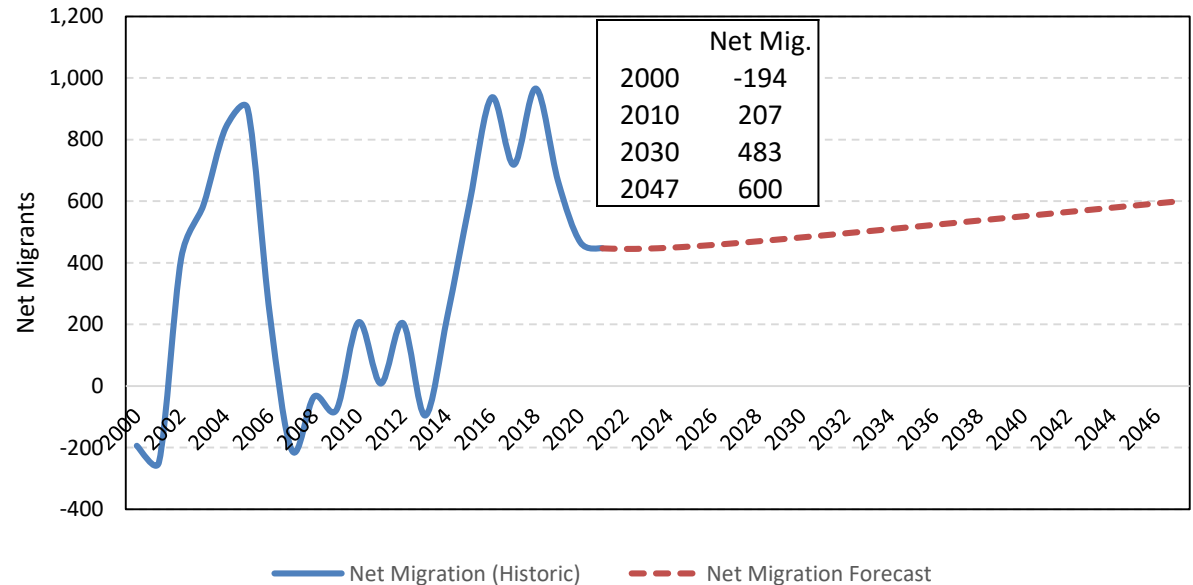
Components of Population Change by 5-year Intervals (2015-2072)



Source: Forecast by Population Research Center (PRC)

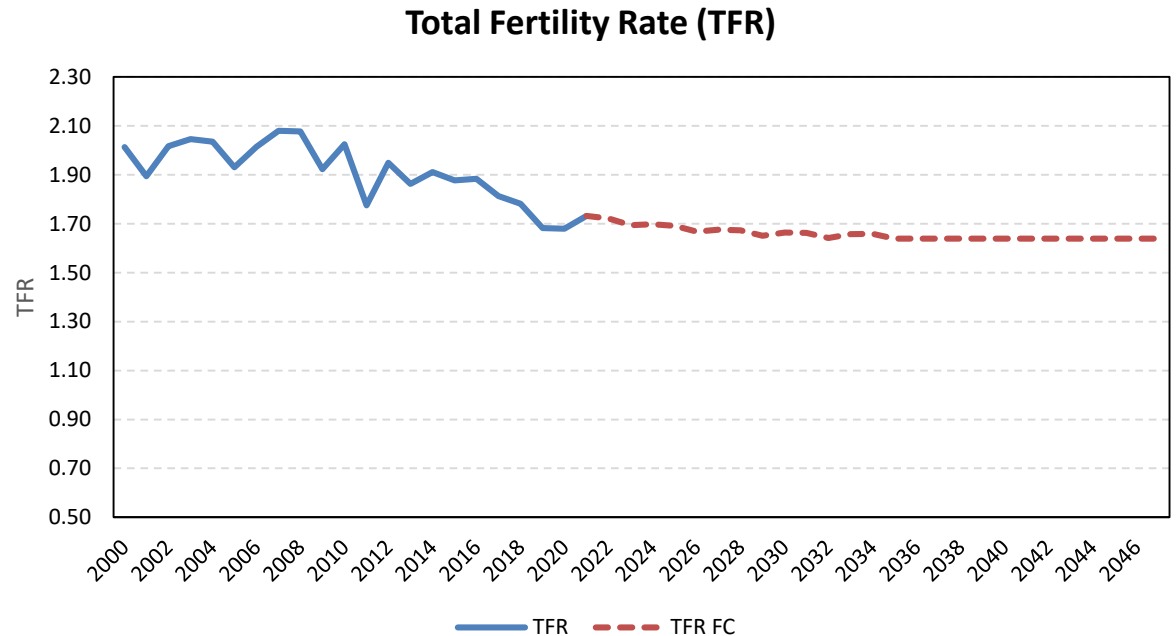
Annual net migration is projected to gradually increase over time. Overall, net migration remains in the mid 400s to upper 500s throughout the forecast time frame. Historically, Coos County experienced relatively low net migration in the late 2000s to early 2010s, which may be related to the economic recession.

Annual Net Migration (2000-2047)



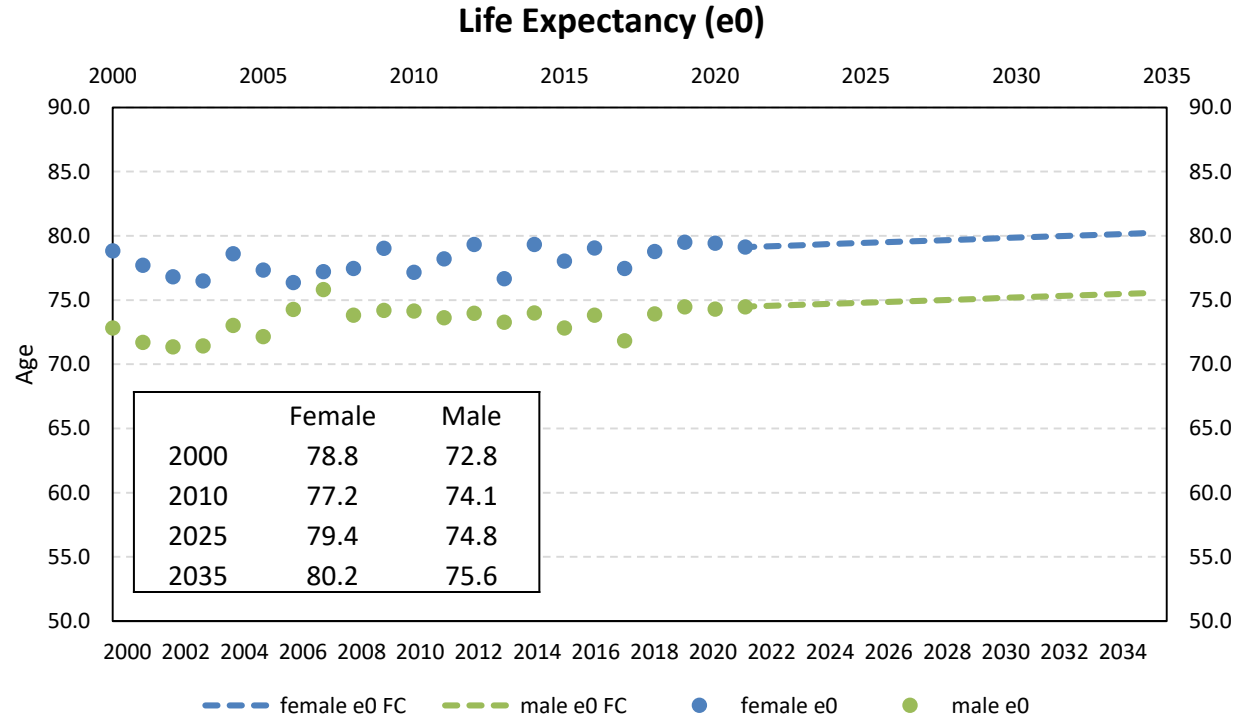
Sources: US Census Bureau. Forecast by Population Research Center (PRC).

The total fertility rate (TFR) for women aged 15-44 remains at 1.6-1.7 in Coos County during the forecast period. TFR has been on decline since 2011 and has been under 2.0 since then.



Sources: Oregon Health Authority, Center for Health Statistics. Calculations and forecast by Population Research Center (PRC).

Life expectancy for both male and female is projected to increase in the next decades. The increase in life expectancy plays a role in the increasing of older population. The result would be that older population taking a larger share of the total population.

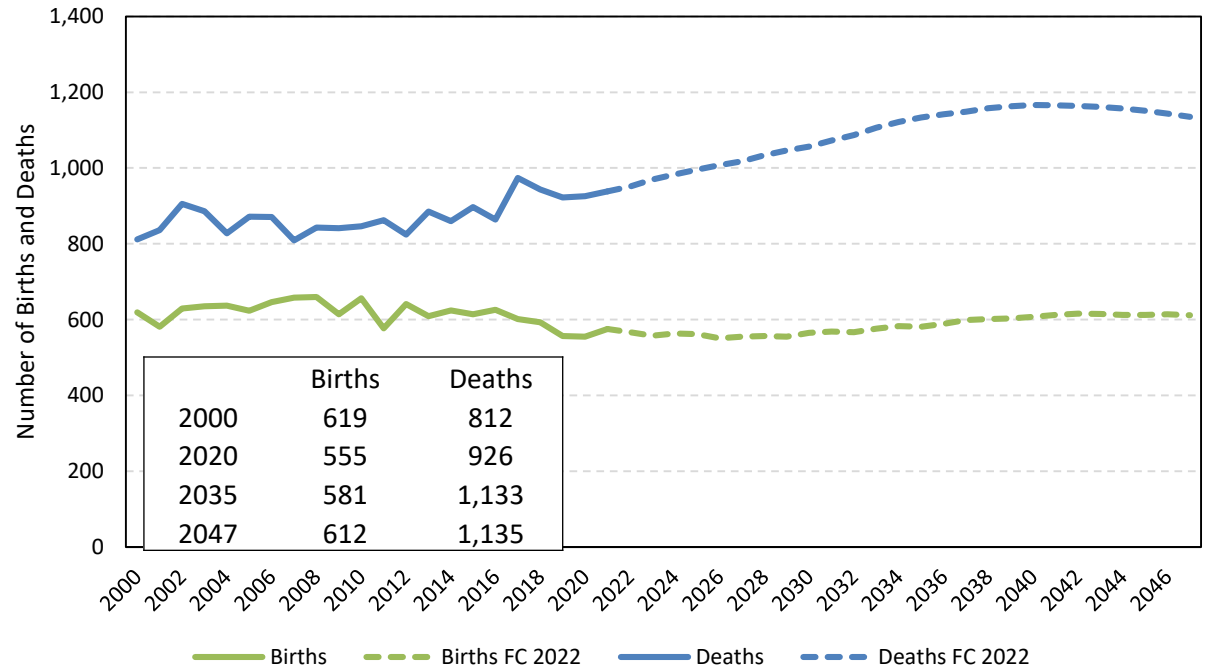


Sources: Oregon Health Authority, Center for Health Statistics. Calculations and forecast by Population Research Center (PRC).

Historical and Forecast Trends

The number of births is projected to remain relatively stable through 2047 while the number of deaths continues to increase. Historically, the number of deaths has been higher than births in the county at least since 2000.

Historical and Forecast Annual Births and Deaths (2000-2047)

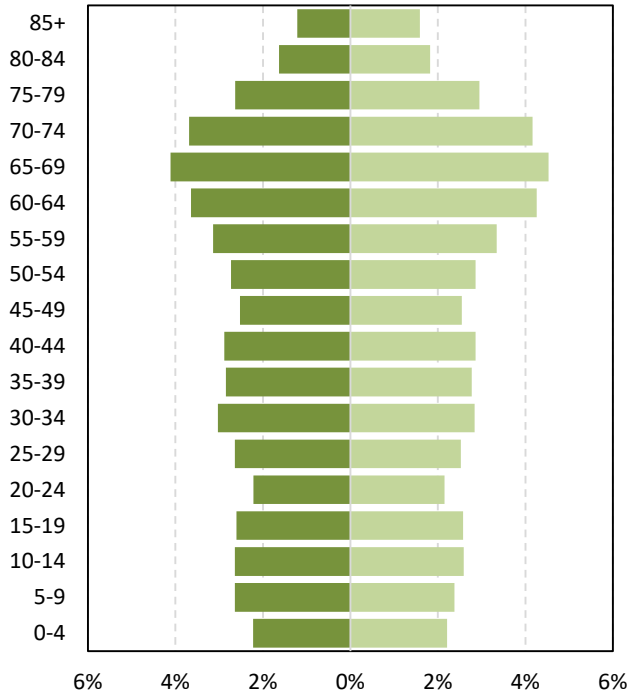


Source: Oregon Health Authority, Center for Health Statistics. Forecast by Population Research Center (PRC)

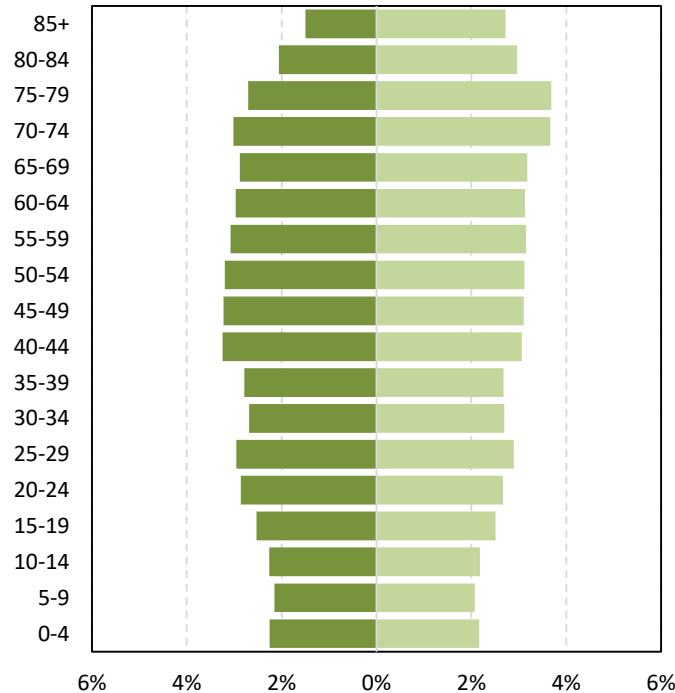
Historical and Forecast Trends

Population Age Structure

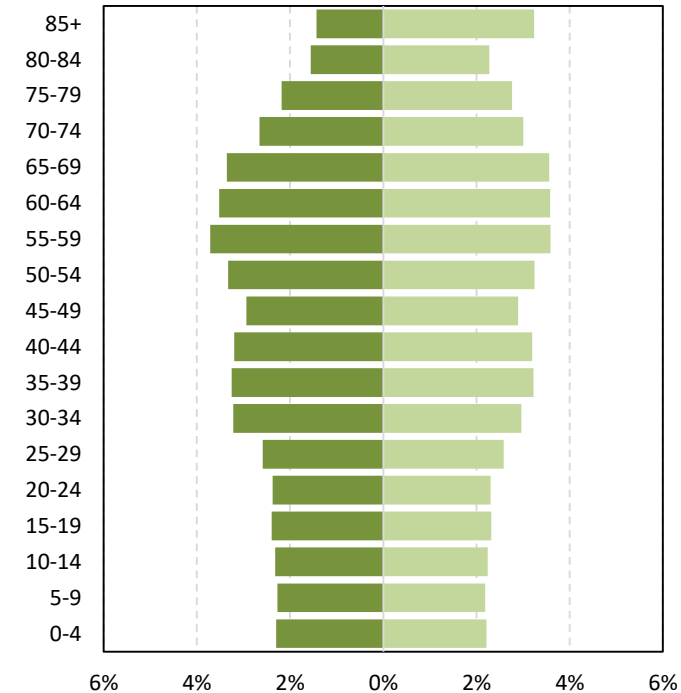
■ Male (2022) ■ Female (2022)



■ Male (2035) ■ Female (2035)



■ Male (2047) ■ Female (2047)



Source: Forecast by Population Research Center (PRC)

[Historical trend](#)

These numbers represent *Proposed* Forecast Results

Historical and Forecast Trends

Historical and Forecast Population for Coos County and its Sub-Areas

	Historical			Forecast				
	2010	2020	AAGR (2010-2020)	2022	2047	2072	AAGR (2022-2047)	AAGR (2047-2072)
Coos County	63,043	64,929	0.3%	65,215	65,317	67,093	0.0%	0.1%
Larger Sub-Areas								
Coos Bay	16,097	15,919	-0.1%	16,070	17,033	18,170	0.2%	0.3%
North Bend	9,943	10,510	0.6%	10,436	11,165	11,453	0.3%	0.1%
Smaller Sub-Areas								
Bandon	2,522	3,726	3.9%	3,908	4,825	6,336	0.8%	1.1%
Coquille	4,059	4,282	0.5%	4,079	3,870	3,779	-0.2%	-0.1%
Lakeside	1,621	1,835	1.2%	1,924	2,246	2,531	0.6%	0.5%
Myrtle Point	2,635	2,830	0.7%	3,761	3,642	3,725	-0.1%	0.1%
Powers	694	704	0.1%	714	772	911	0.3%	0.7%
Outside UGBs	25,472	25,124	-0.1%	24,325	21,765	20,188	-0.4%	-0.3%

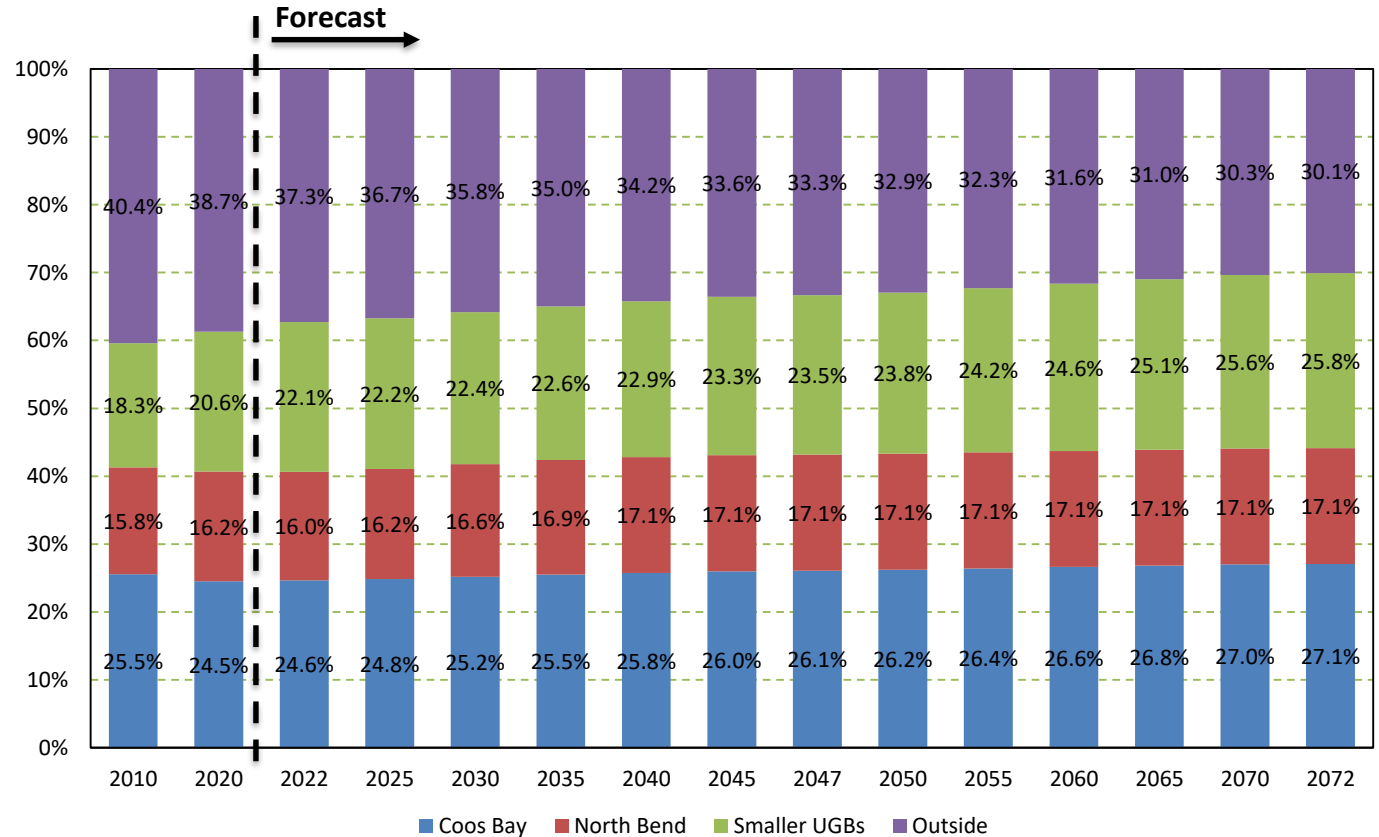
Note: UGBs are indicated by their city names. Larger sub-areas are those with populations over 8,000 in 2020.

Sources: U.S. Census Bureau; Forecast by Population Research Center (PRC)

Proposed Forecast Results

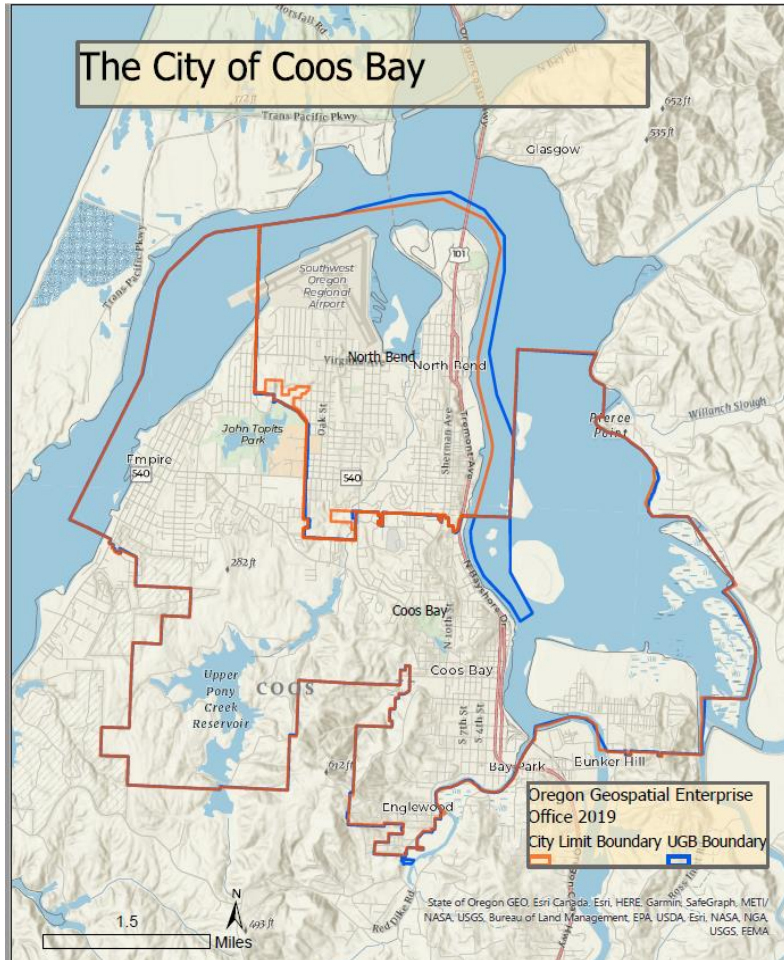
Coos County – Population Shares of Sub-Areas and Outside UGBs

This figure shows the percentage of the county population that is in each group of sub-areas. Over time, the share of population living inside the UGBs increase while the share of population outside of UGBs decrease. Smaller UGBs share of population increased from 22.1% in 2022 to 25.8% in 2072. Coos Bay continues to take up the largest share among UGBs.



Sources: U.S. Census Bureau; Forecast by Population Research Center (PRC).
 Note: Sub-areas with populations under 8,000 in 2020 were considered smaller UGBs

Proposed Forecast Results

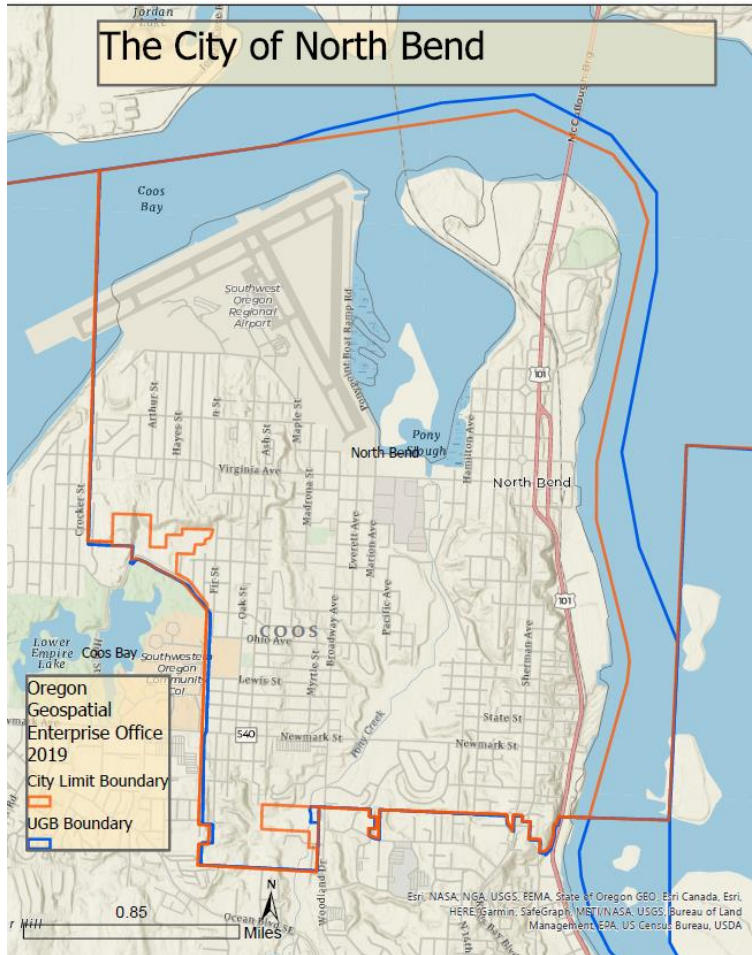


Population Distribution in Larger Sub-Areas

	Population	Share of County
Coos Bay UGB		
2022	16,070	24.6%
2047	17,033	26.1%
2072	18,170	27.1%

Sources: Forecast by Population Research Center (PRC)

Proposed Forecast Results



Population Distribution in Larger Sub-Areas

	Population	Share of County
North Bend UGB		
2022	10,436	16.0%
2047	11,165	17.1%
2072	11,453	17.1%

Sources: Forecast by Population Research Center (PRC)

Population Distribution in Smaller Sub-Areas

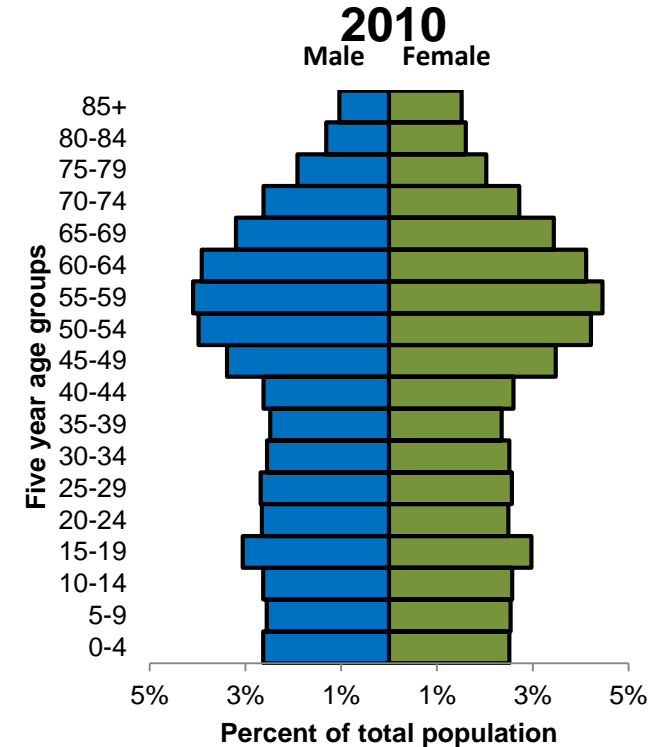
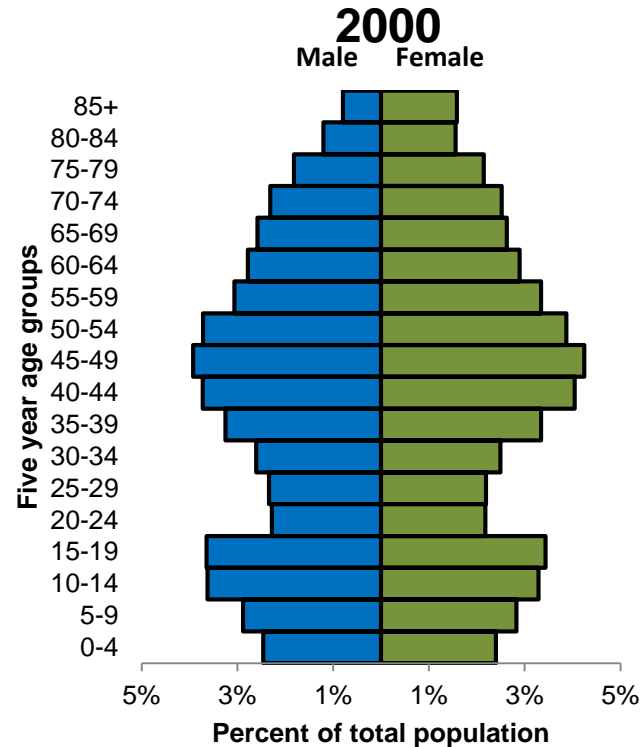
	Population			Share of County Population		
	2022	2047	2072	2022	2047	2072
Coos County	65,215	65,317	67,093			
Bandon	3,908	4,825	6,336	6.0%	7.4%	9.4%
Coquille	4,079	3,870	3,779	6.3%	5.9%	5.6%
Lakeside	1,924	2,246	2,531	3.0%	3.4%	3.8%
Myrtle Point	3,761	3,642	3,725	5.8%	5.6%	5.6%
Powers	714	772	911	1.1%	1.2%	1.4%
Outside UGBs	24,325	21,765	20,188	37.3%	33.3%	30.1%

Note: Smaller sub-areas refer to those with populations under 8,000 in 2020.
Sources: Forecast by Population Research Center (PRC)

1. We expect Coos County's population to remain stable throughout the forecast period with little growth.
2. Net migration shows slight growth in absolute numbers, reaching ~600 in 2047.
3. Deaths surpasses births due to an aging population and lower fertility rate, contributing to the natural decrease in population, which is a continuation of the trend shown in current data.
4. Coos Bay and North Bend will continue to account for the largest population share. Most UGBs will see population growth. Coquille and Myrtle Point will experience some population decline.
5. Although larger sub-areas still account for most of the population within UGBs, smaller sub-areas are likely to increase their shares of population.

Additional Historical Trends

These two age pyramids show the population from the 2000 and 2010 Census. Over time, the population ages forward. The older population accounts for an increasing share of the total population while the share of younger populations decreased.



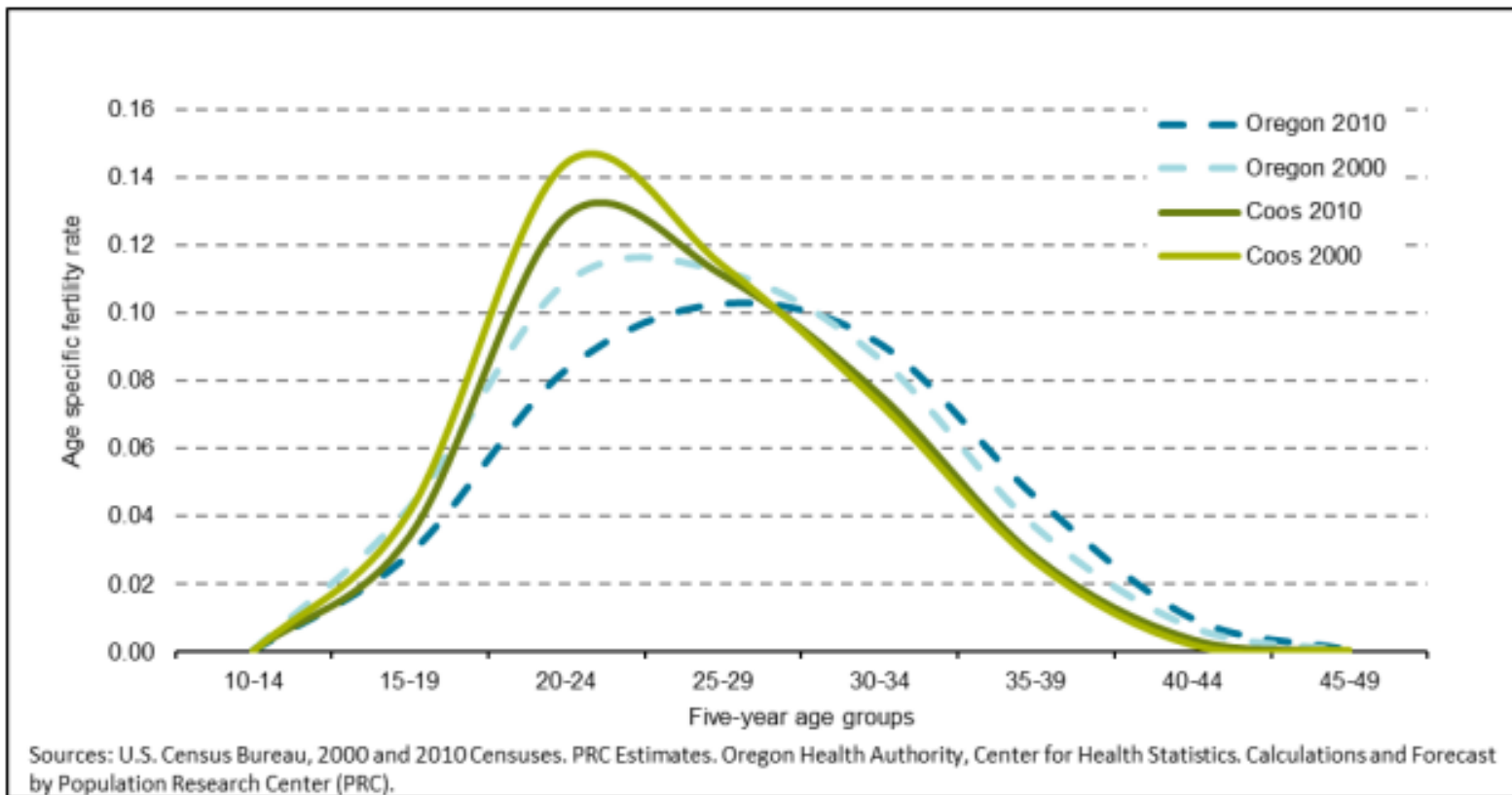
Sources: US Census Bureau, 2000 and 2010 Decennial Census

Race and ethnicity breakdown in 2010 and 2020

Hispanic or Latino and Race	2010		2020		Absolute Change	Relative Change
Total Population	63,043		64,929		1,886	3.0%
Hispanic or Latino (of any race)	3,391	5.4%	4,292	6.6%	901	26.6%
Not Hispanic or Latino	59,652	94.6%	60,637	93.4%	985	1.7%
White alone	54,820	87.0%	53,538	82.5%	-1,282	-2.3%
Black or African American alone	234	0.4%	259	0.4%	25	10.7%
American Indian and Alaska Native alone	1,467	2.3%	1,320	2.0%	-147	-10.0%
Asian alone	644	1.0%	728	1.1%	84	13.0%
Native Hawaiian and Other Pacific Islander alone	104	0.2%	120	0.2%	16	15.4%
Some Other Race alone	75	0.1%	316	0.5%	241	321.3%
Two or More Races	2,308	3.7%	4,356	6.7%	2,048	88.7%

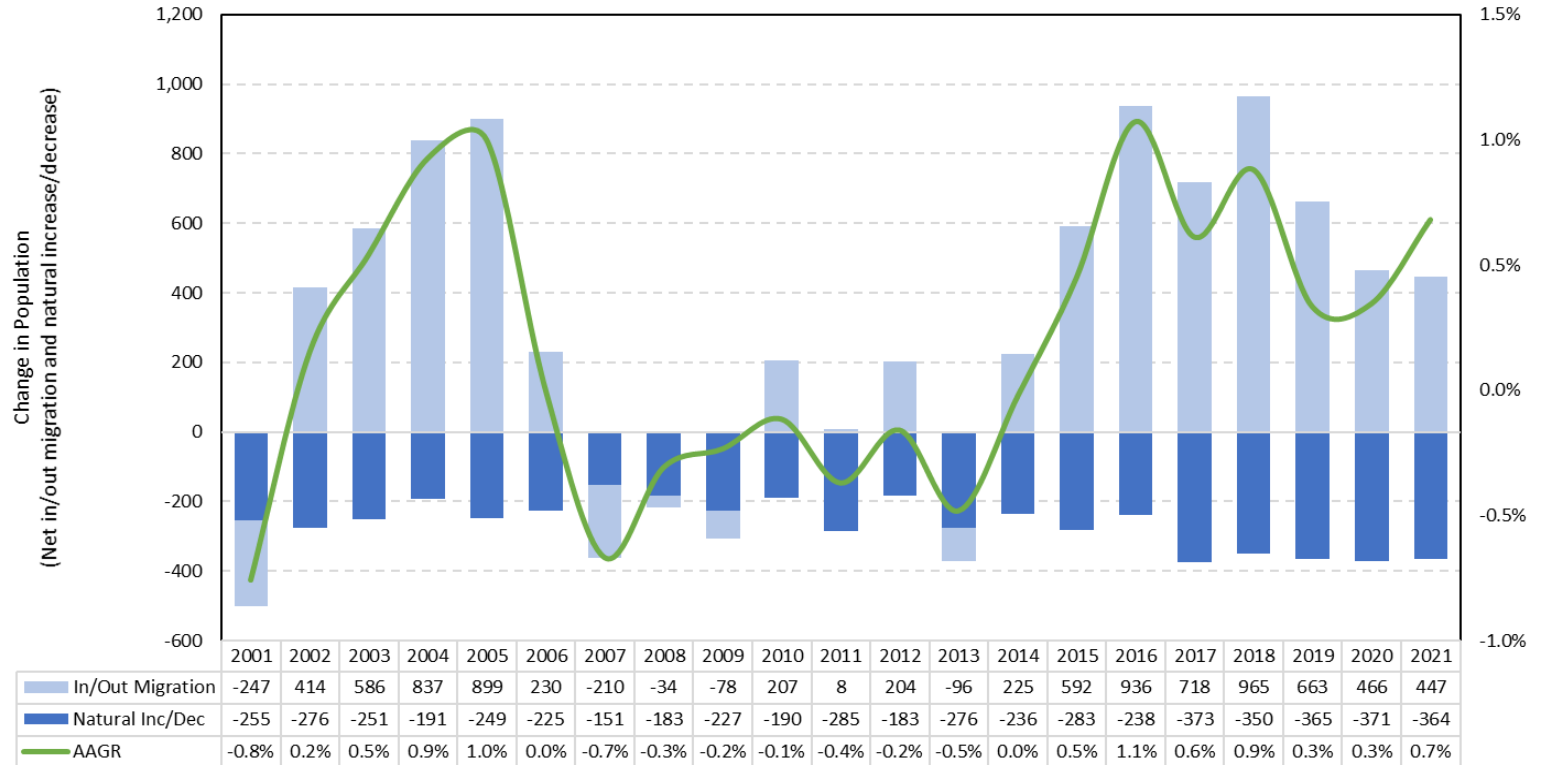
Sources: US Census Bureau, 2010 and 2020 Decennial Census

State and county level age-specific fertility rates



Additional Historical Trends

Components of Population Change and Average Annual Growth Rate (2001-2021)



Sources: US Census Bureau. Oregon Health Authority (OHA). Calculated by Population Research Center (PRC)