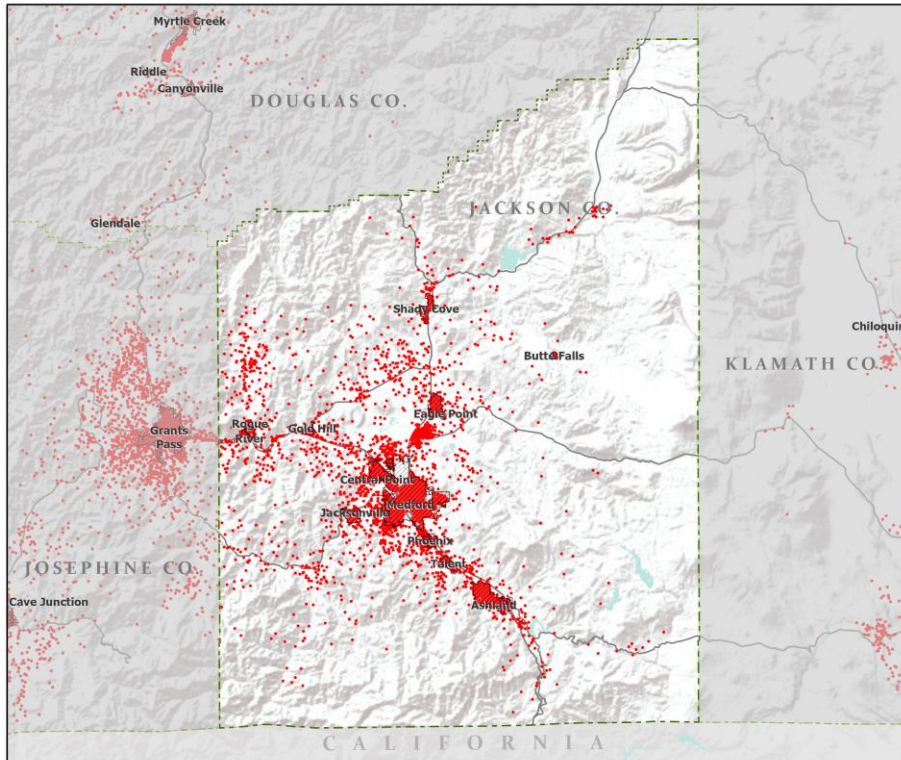






# Oregon Population Forecast Program

Proposed Coordinated Forecasts for Jackson County,  
its Urban Growth Boundaries (UGBs), and the Area  
Outside UGBs

March 2022

## Population: Jackson County



-  Counties
  -  Incorporated Cities
  -  Highways
- 2010 POPULATION
-  1 Dot = 25 persons



Portland State University,  
Population Research Center,  
May 2021.  
[www.pdx.edu/prc](http://www.pdx.edu/prc)

Sources: Esri, USGS, NOAA  
State of Oregon GEO;  
Oregon Dept. of  
Transportation.

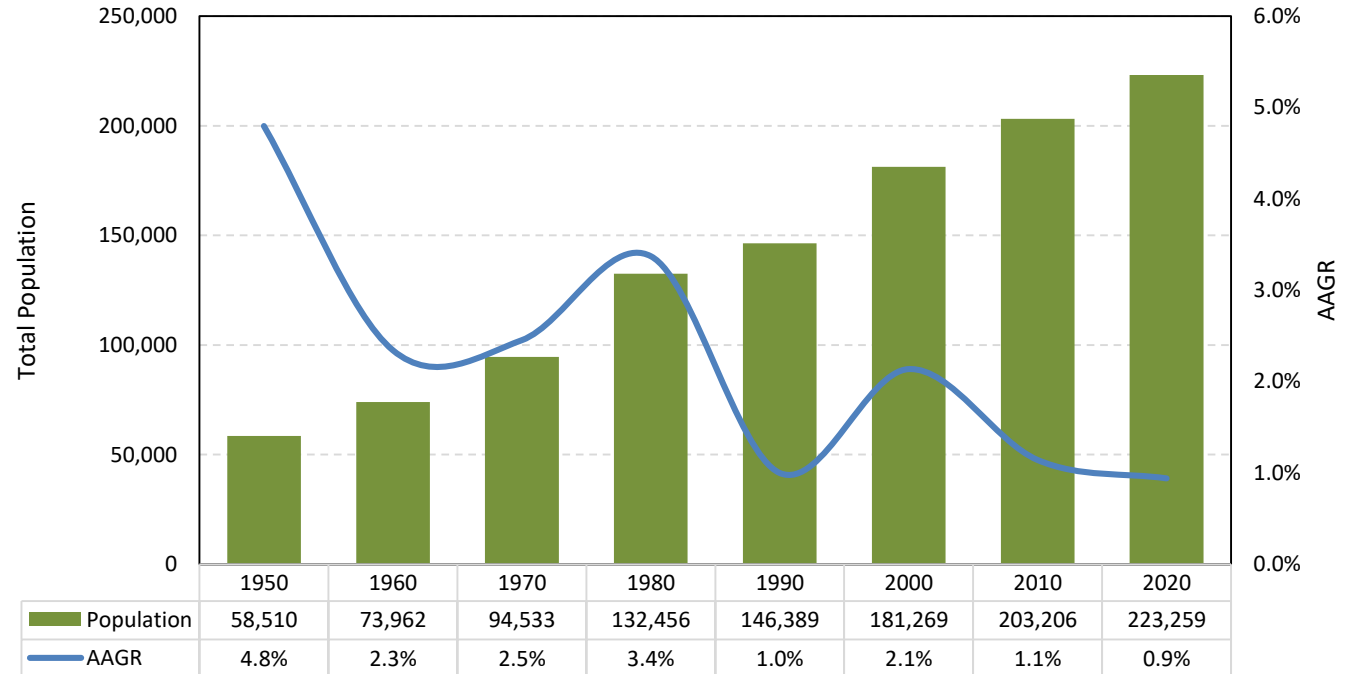


# Jackson County

# Proposed Forecast Results

*Jackson County experienced the highest population growth in the 1950 Census and another peak growth in the 1980 Census. In the 2000 Census, the county saw an AAGR of 2.1%. The most recent 2020 Census indicated an AAGR of 0.9%, which is close to those shown in the 1990 and 2010 Census.*

## Historical Census Population

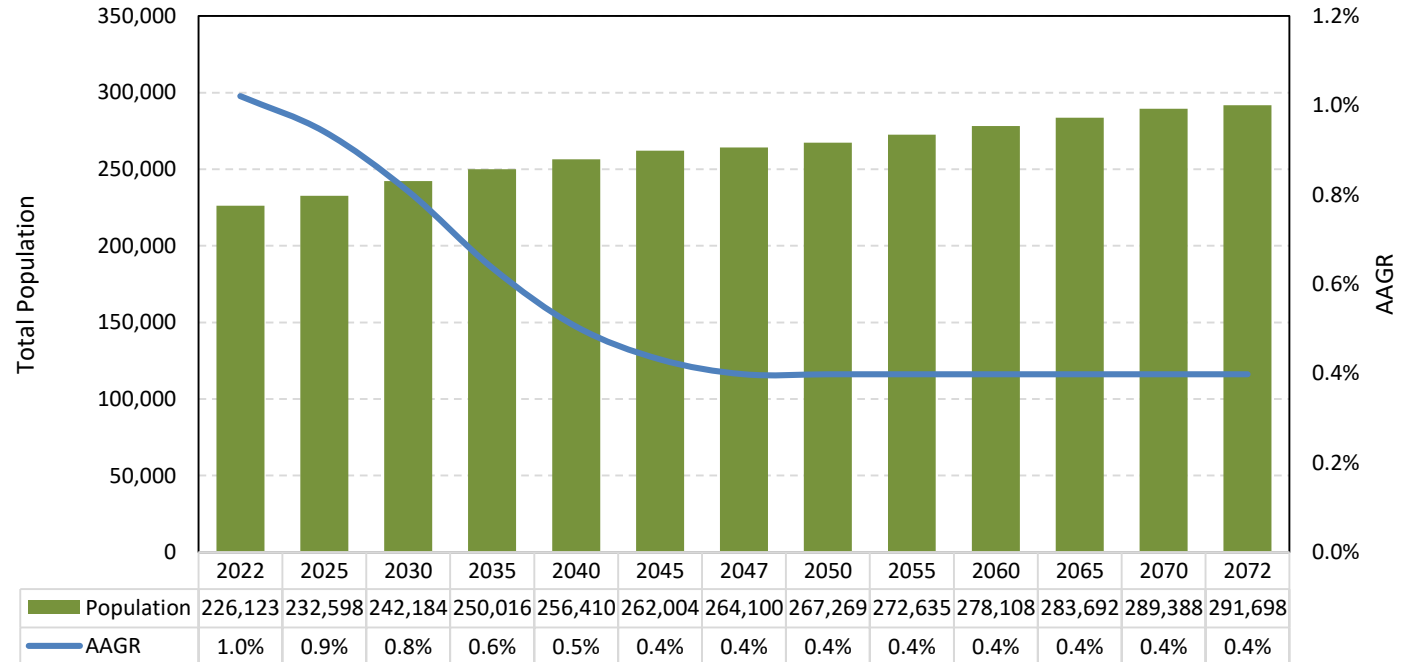


Source: US Census Bureau Decennial Census

# Proposed Forecast Results

*Jackson County's population is projected to grow at an annual average rate ranging from 1.0% to 0.4%. The county wide population is projected to reach 291,698 in 2072, compared to 226,123 in 2022, indicating an increase of 65,575 people.*

**Population Forecast (2022-2047)**

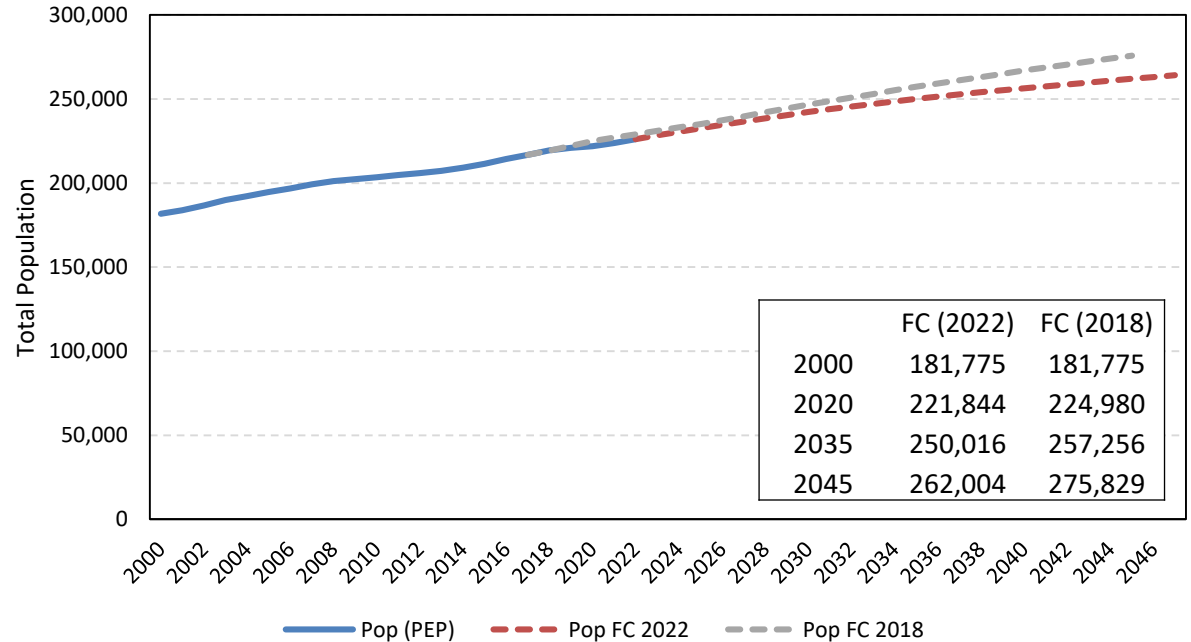


Source: Forecasted by Population Research Center (PRC)

# Proposed Forecast Results

*The current forecast displays a slower growth compared to the 2018 forecast. The current forecast puts Jackson County's population at 262,004 in 2045, compared to 275,829 in the 2018 forecast. This is 5% lower than the previous forecast.*

### Population Forecast Comparison

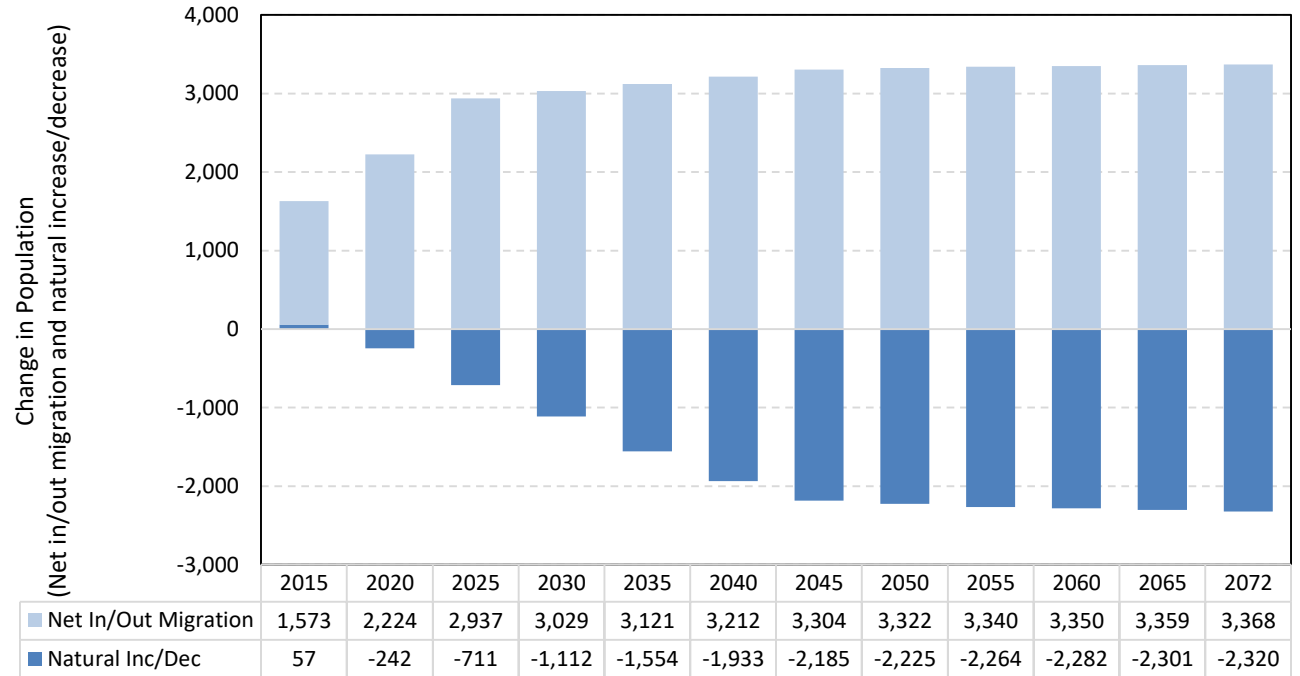


Source: US Census Bureau Population Estimates Program (PEP). Forecast by Population Research Center (PRC)  
Note: PEP estimates may be different from the 2020 Census.

# Proposed Forecast Results

*Natural decrease is projected to occur over time while net migration remains positive. Annual net migration is projected to be in the lower 3,000s during most of the years.*

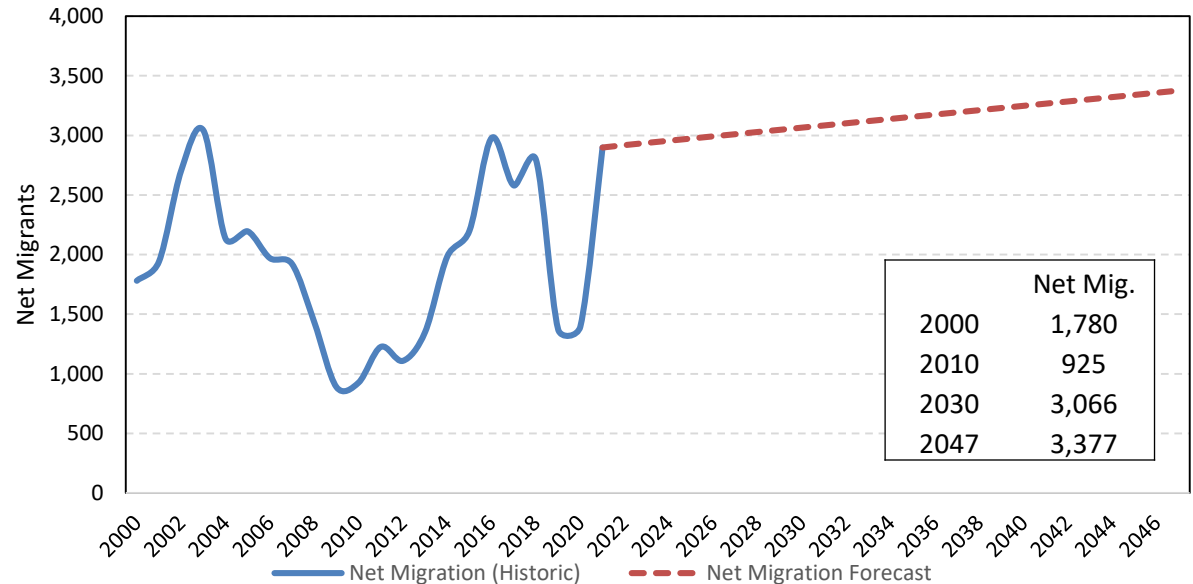
**Components of Population Change by 5-year Intervals (2015-2072)**



Source: Forecast by Population Research Center (PRC)

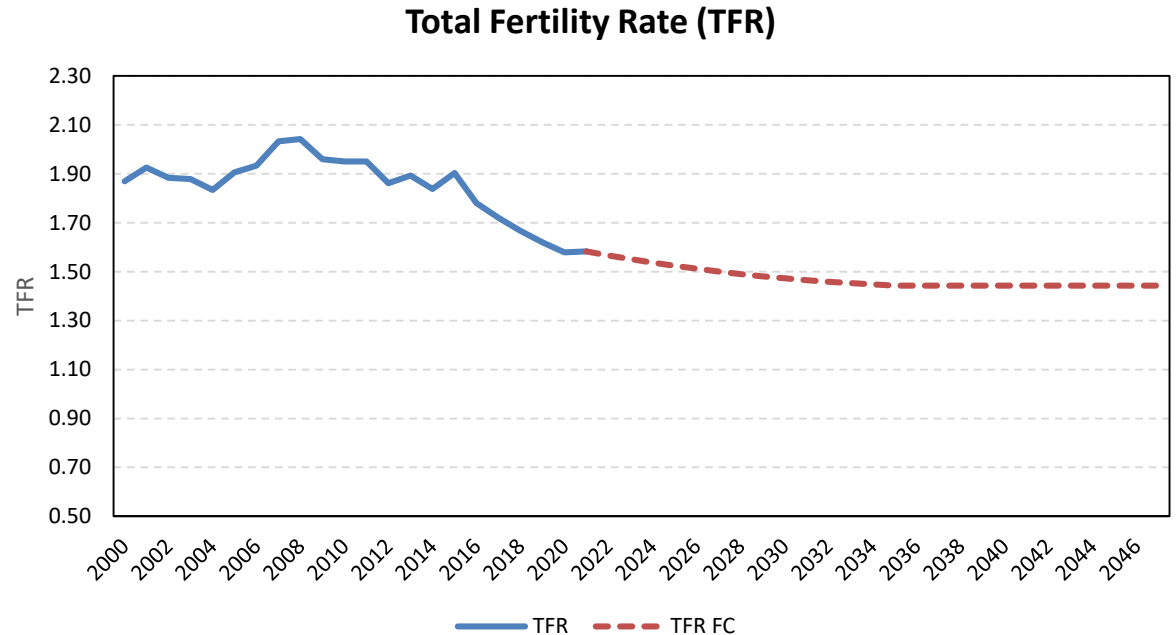
*Annual net migration experienced its lowest points around 2009 and 2020. However, recent trend shows that net migration has been reversing in the county, with the exception of 2020, which is likely to be associated with COVID-19 impacts. Net migration is assumed to continue to recover in the forecast.*

### Annual Net Migration (2000-2047)



Sources: US Census Bureau. Forecast by Population Research Center (PRC).

*The total fertility rate (TFR) for women age 15-44 in the county has decreased since 2016. The TFR has remained under 2.0 since 2009. The projected TFR is between 1.5 and 1.4.*

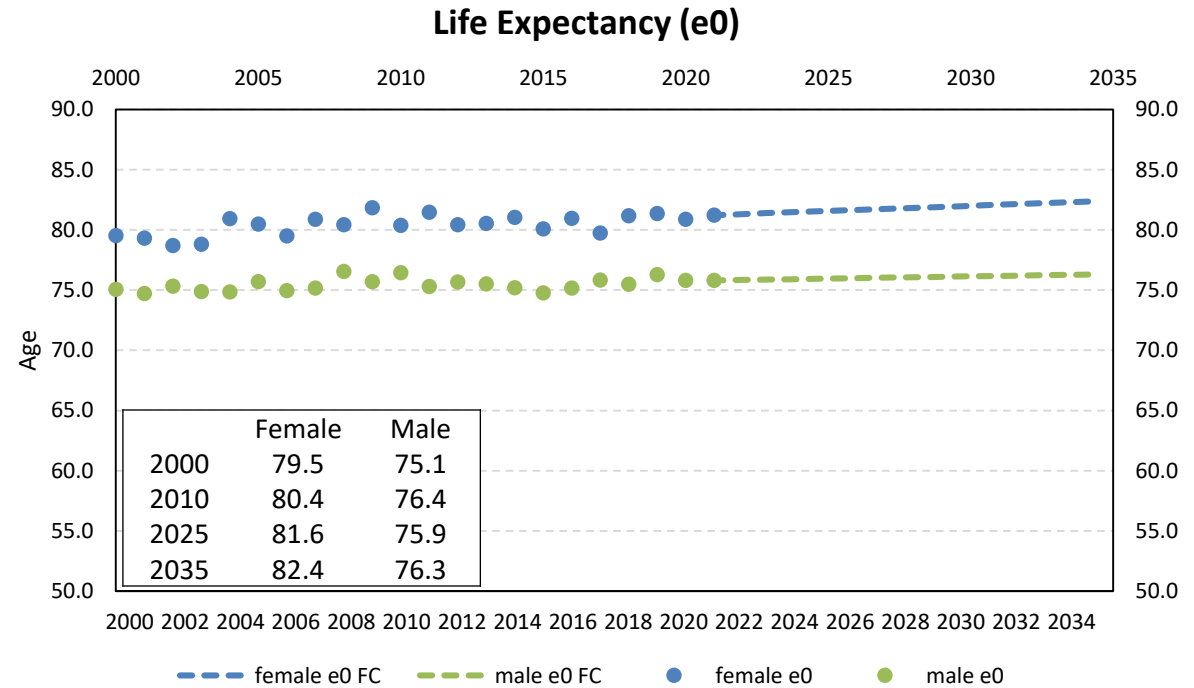


Sources: Oregon Health Authority, Center for Health Statistics. Calculations and forecast by Population Research Center (PRC).



# Historical and Forecast Trends

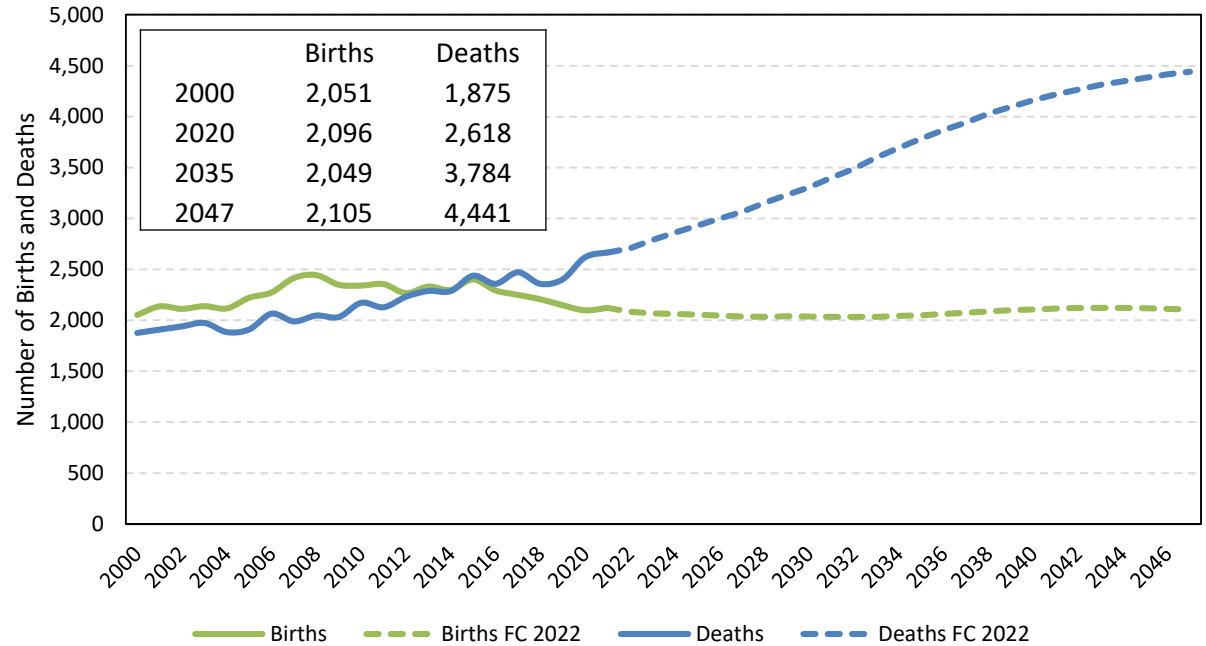
*Life expectancy for both female and male is projected to follow an increasing trend. Female life expectancy is projected to increase at a faster pace than male.*



Sources: Oregon Health Authority, Center for Health Statistics. Calculations and forecast by Population Research Center (PRC).

*Annual deaths started to pass annual births around 2015 and are projected to continue the trend in the forecast. By 2047, the number of deaths is more than twice as many as in 2000. By contrast, the trend line for annual births remains relatively flat.*

**Historical and Forecast Annual Births and Deaths (2000-2047)**

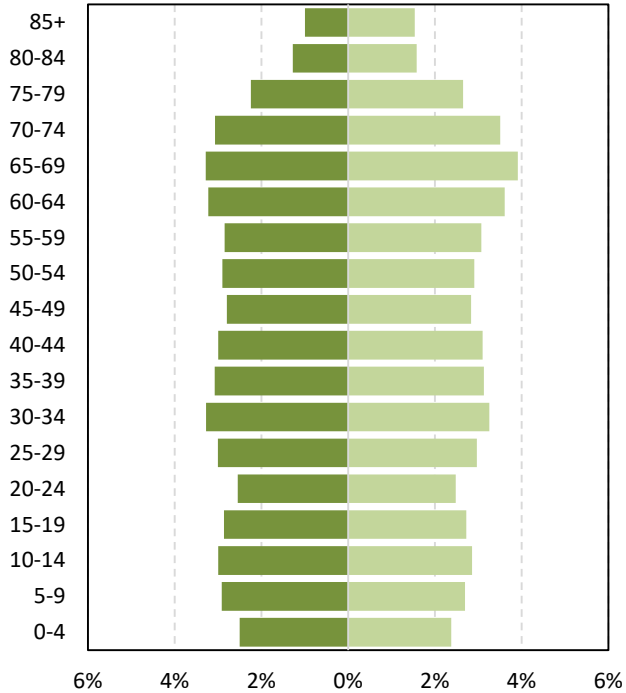


Source: Oregon Health Authority, Center for Health Statistics. Forecast by Population Research Center (PRC)

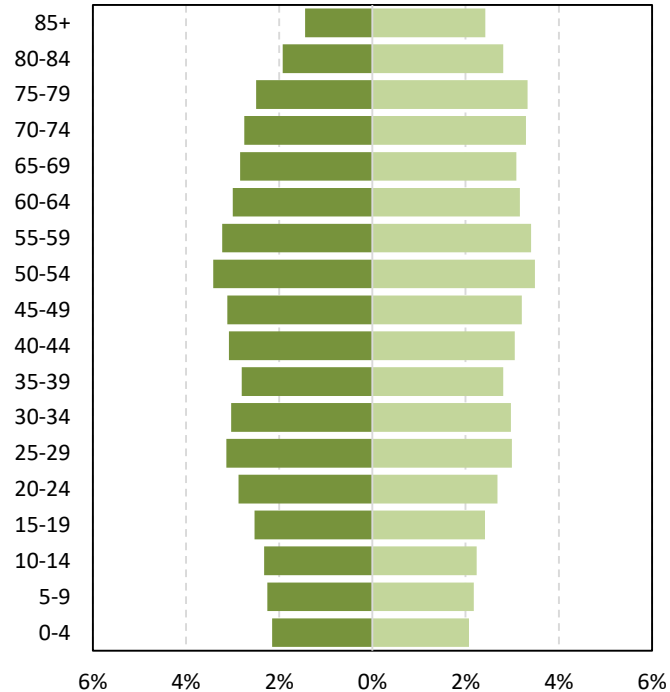
# Historical and Forecast Trends

## Population Age Structure

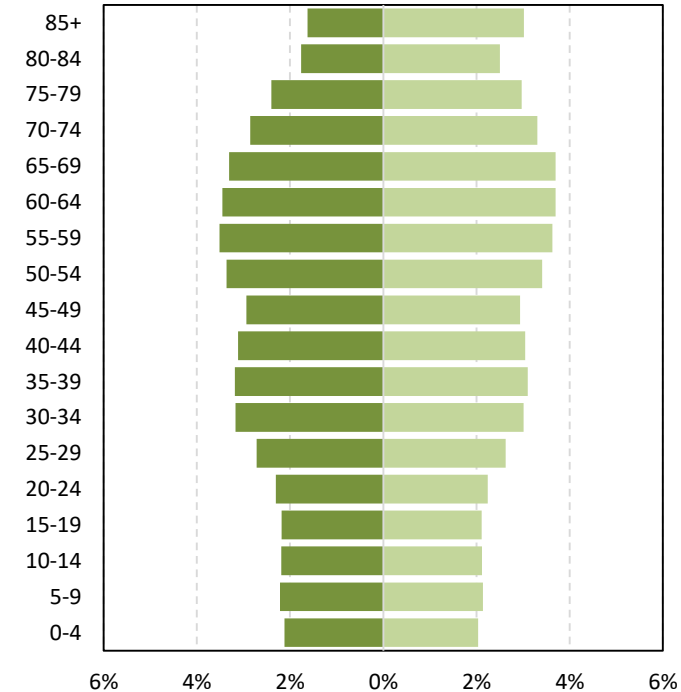
■ Male (2022) ■ Female (2022)



■ Male (2035) ■ Female (2035)



■ Male (2047) ■ Female (2047)



Source: Forecast by Population Research Center (PRC)

[Historical trend](#)

These numbers represent *Proposed* Forecast Results

# Historical and Forecast Trends

## Historical and Forecast Population for Jackson County and its Sub-Areas

	Historical			Forecast				
	2010	2020	AAGR (2010-2020)	2022	2047	2072	AAGR (2022-2047)	AAGR (2047-2072)
<b>Jackson County</b>	203,206	223,259	0.9%	226,123	264,100	291,698	0.6%	0.4%
<b>Larger UGBs</b>								
Ashland	21,926	23,063	0.5%	23,577	29,227	30,319	0.9%	0.1%
Central Point	19,929	22,211	1.1%	23,132	25,769	27,639	0.4%	0.3%
Eagle Point	9,676	10,381	0.7%	10,618	10,590	11,186	0.0%	0.2%
Medford	84,147	94,265	1.1%	97,654	126,488	148,527	1.0%	0.6%
<b>Smaller UGBs</b>								
Butte Falls	372	440	1.7%	455	456	483	0.0%	0.2%
Gold Hill	1,271	1,434	1.2%	1,395	1,670	1,997	0.7%	0.7%
Jacksonville	2,954	3,428	1.5%	3,644	4,228	4,700	0.6%	0.4%
Phoenix	6,046	5,788	-0.4%	5,320	6,080	6,771	0.5%	0.4%
Rogue River	3,030	3,787	2.2%	3,688	3,640	3,406	-0.1%	-0.3%
Shady Cove	3,784	3,818	0.1%	3,809	3,834	4,068	0.0%	0.2%
Talent	7,518	8,633	1.4%	7,775	8,023	8,604	0.1%	0.3%
<b>Outside UGBs</b>	42,555	46,011	0.8%	45,057	44,094	43,998	-0.1%	0.0%

Note: UGBs are indicated by their city names. Larger sub-areas are those with populations over 8,000 in 2020.

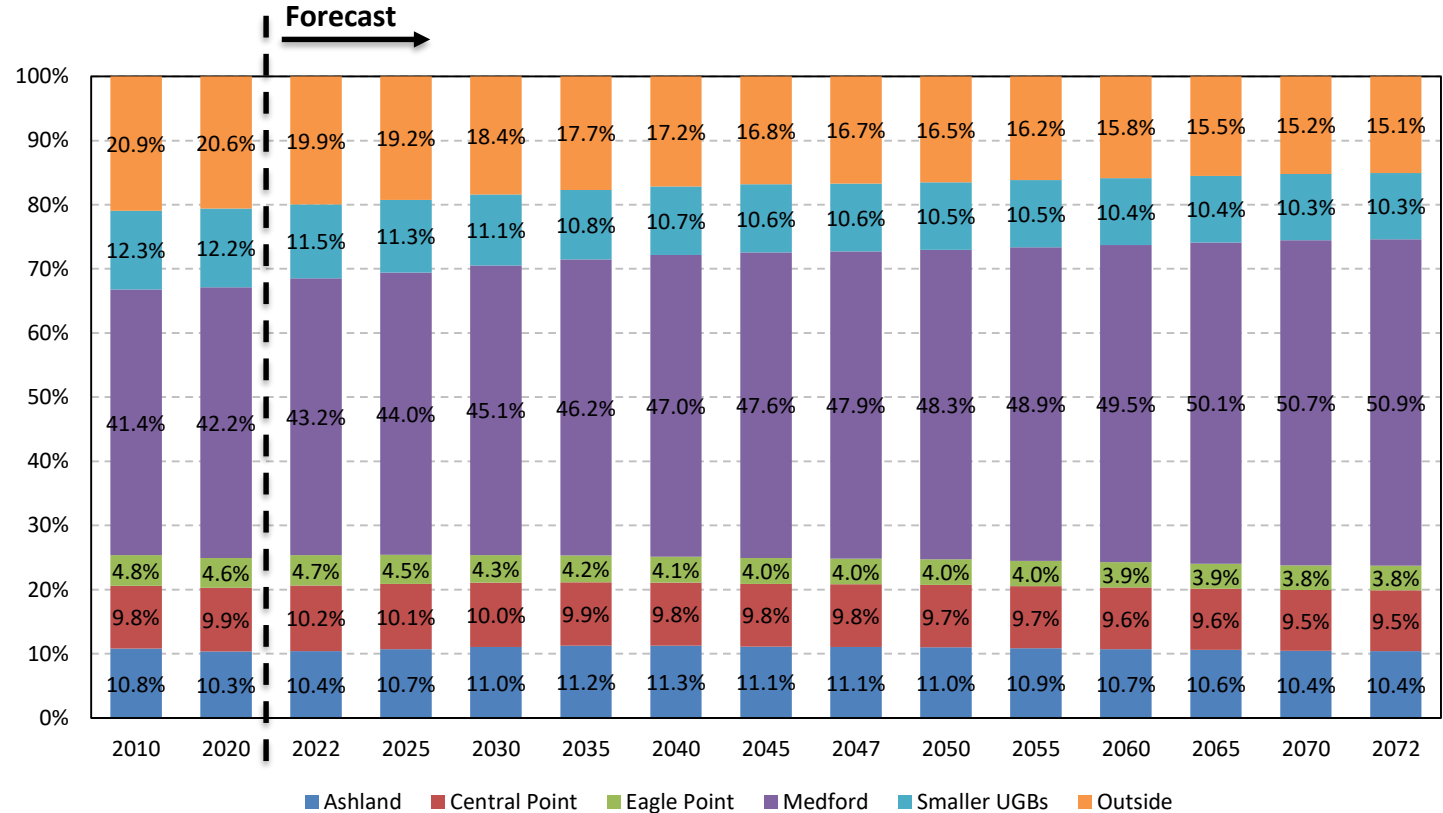
Sources: U.S. Census Bureau; Forecast by Population Research Center (PRC)

These numbers represent *Proposed* Forecast Results

# Proposed Forecast Results

## Jackson County – Population Shares of Sub-Areas and Outside UGBs

*This figure shows the percentage of the county population that is in each group of sub-areas. Over time, the share of population living inside the UGBs increase while the share of population outside of UGBs decrease. Medford is projected to increase its share of population and account for over 50% toward the end of the forecast period.*



Sources: U.S. Census Bureau; Forecast by Population Research Center (PRC).

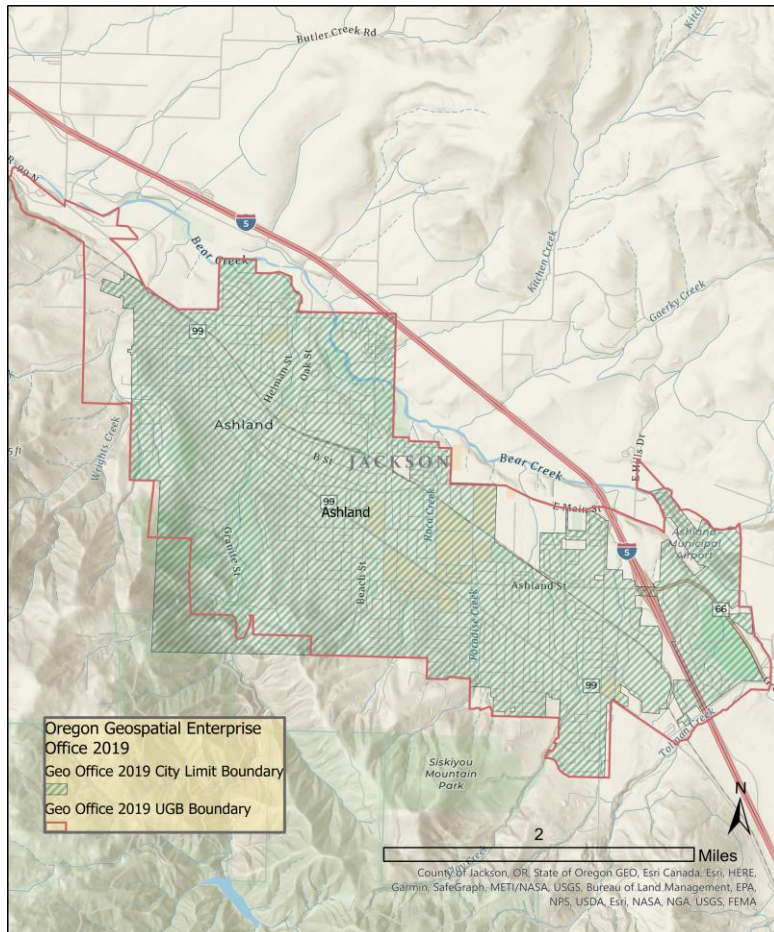
Note: Sub-areas with populations under 8,000 in 2020 were considered smaller UGBs

# Proposed Forecast Results

## Population Distribution in Larger Sub-Areas

	Population	Share of County
<b>Ashland UGB</b>		
2022	23,577	10.4%
2047	29,227	11.1%
2072	30,319	10.4%

Sources: Forecast by Population Research Center (PRC)



**Note:** UGB and/or city boundary was updated based on data received in 2022.

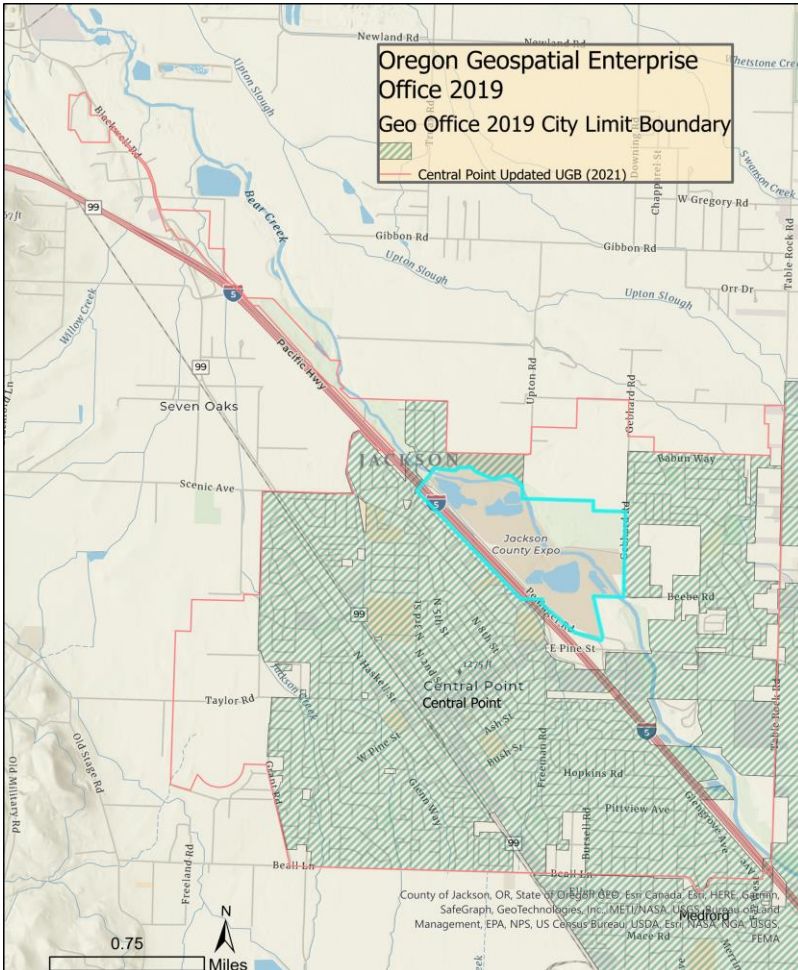
These numbers represent **Proposed** Forecast Results

# Proposed Forecast Results

## Population Distribution in Larger Sub-Areas

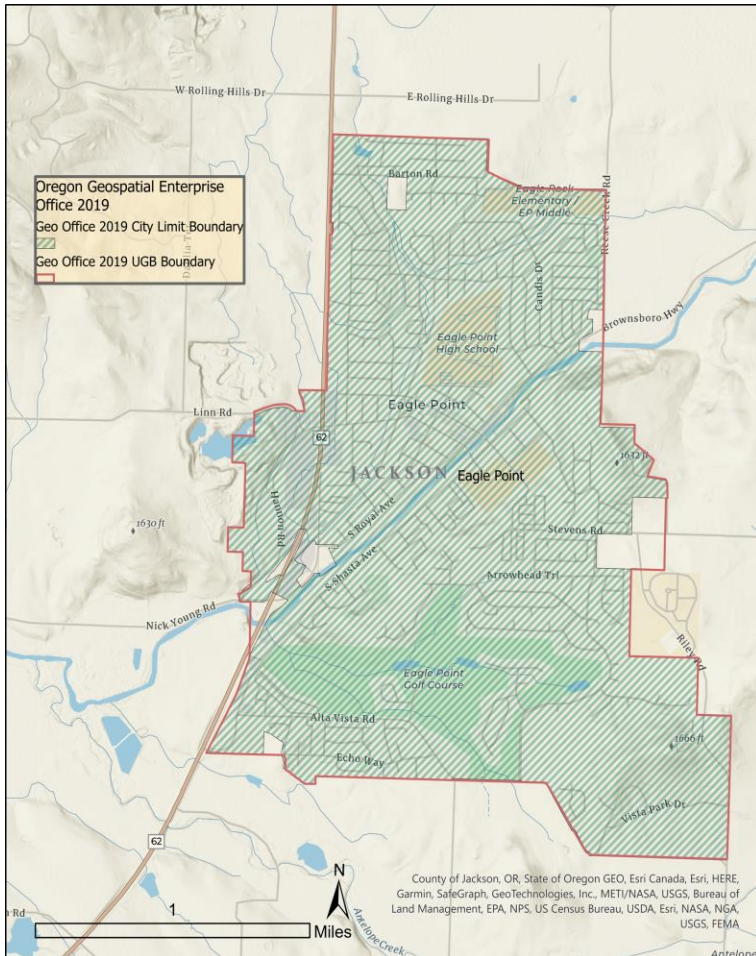
	Population	Share of County
<b>Central Point UGB</b>		
2022	23,132	10.2%
2047	25,769	9.8%
2072	27,639	9.5%

Sources: Forecast by Population Research Center (PRC)



These numbers represent *Proposed* Forecast Results

# Proposed Forecast Results

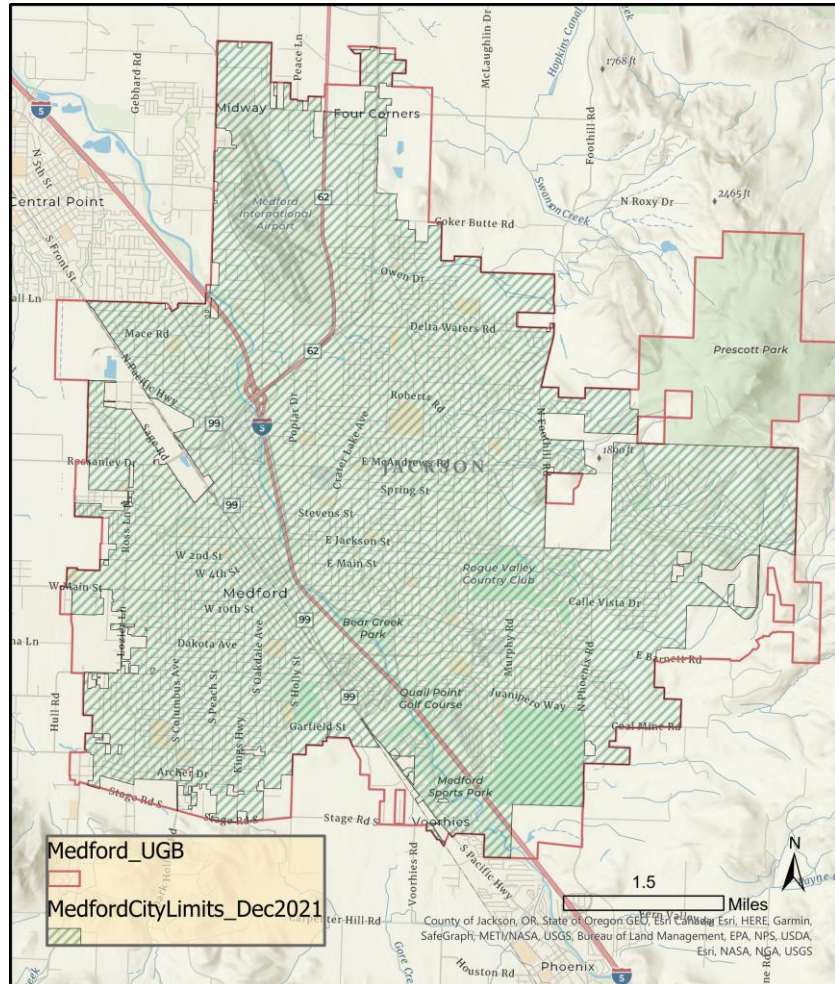


	Population	Share of County
<b>Eagle Point UGB</b>		
2022	10,618	4.7%
2047	10,590	4.0%
2072	11,186	3.8%

These numbers represent **Proposed** Forecast Results



# Proposed Forecast Results



	Population	Share of County
<b>Medford UGB</b>		
2022	97,654	43.2%
2047	126,488	47.9%
2072	148,527	50.9%

These numbers represent *Proposed* Forecast Results

## Population Distribution in Smaller Sub-Areas

	Population			Share of County Population		
	2022	2047	2072	2022	2047	2072
<b>Jackson County</b>	226,123	264,100	291,698			
Butte Falls	455	456	483	0.2%	0.2%	0.2%
Gold Hill	1,395	1,670	1,997	0.6%	0.6%	0.7%
Jacksonville	3,644	4,228	4,700	1.6%	1.6%	1.6%
Phoenix	5,320	6,080	6,771	2.4%	2.3%	2.3%
Rogue River	3,688	3,640	3,406	1.6%	1.4%	1.2%
Shady Cove	3,809	3,834	4,068	1.7%	1.5%	1.4%
Talent	7,775	8,023	8,604	3.4%	3.0%	2.9%
<b>Outside</b>	45,057	44,094	43,998	19.9%	16.7%	15.1%

*Note: Smaller sub-areas refer to those with populations under 8,000 in 2020.*

Sources: Forecast by Population Research Center (PRC)

1. We expect Jackson County's population to maintain positive growth throughout the forecast period. The AAGR is projected to be 0.4% toward the end of the forecast. The county population grows by 29% in the next 50 years.
2. Annual net migration is projected to grow gradually over time, reaching over 3,000 by 2047.
3. The number of births is not expected to grow, but annual deaths will increase rapidly as the population ages. Annual deaths are projected to reach nearly 4,500 in 2047.
4. The population ages forward over time, with the oldest age group account for a larger share of population. With lower total fertility rate and an increase in older population, population share for the younger age groups declines.
5. The share of population outside of the UGBs is projected to decline. Medford continues to account for the largest share of population among all UGBs, taking 51% of the total population by 2072. The share of other larger UGBs and smaller UGBs may decrease slightly over time.



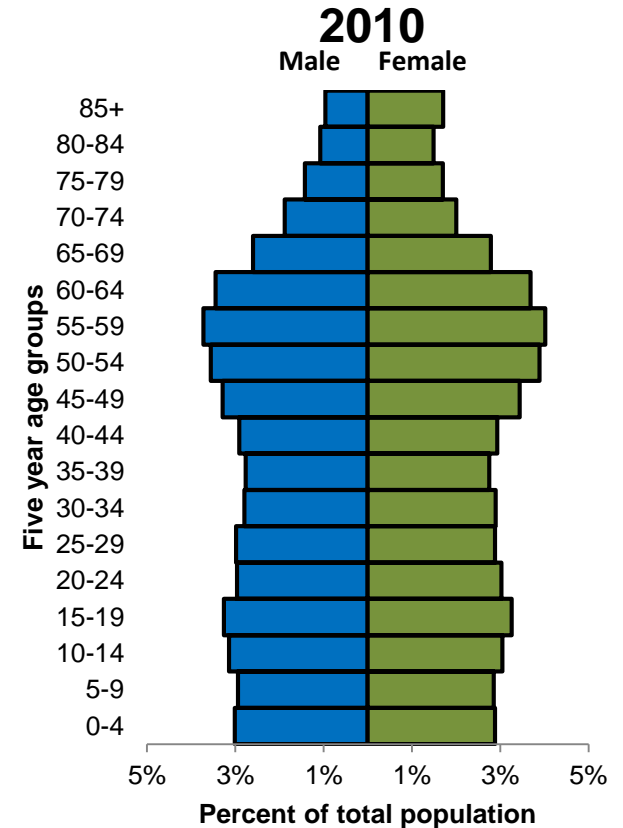
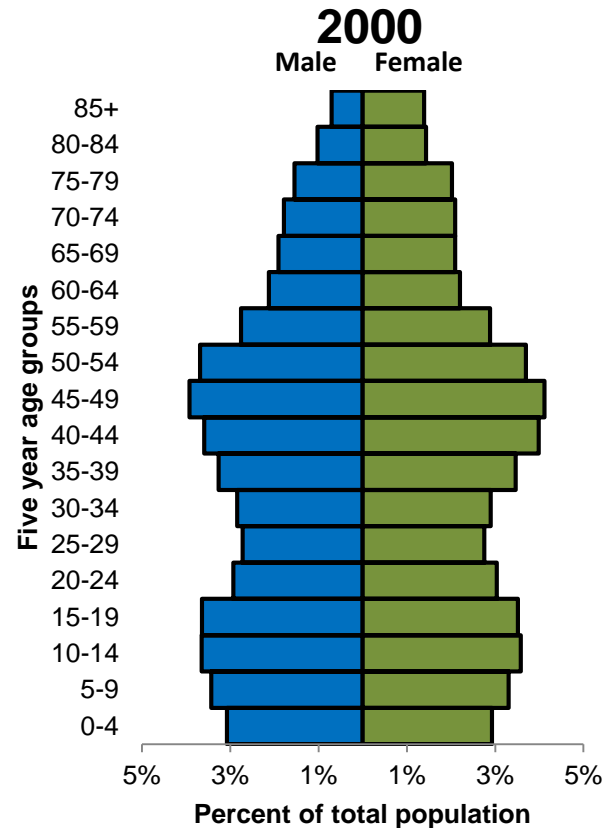
## Race and ethnicity breakdown in 2010 and 2020

Hispanic or Latino and Race	2010		2020		Absolute Change	Relative Change
<b>Total Population</b>	203,206		223,259		20,053	9.9%
<b>Hispanic or Latino (of any race)</b>	21,745	10.7%	30,399	13.6%	8,654	39.8%
<b>Not Hispanic or Latino</b>	181,461	89.3%	192,860	86.4%	11,399	6.3%
<b>White alone</b>	170,023	83.7%	170,232	76.2%	209	0.1%
<b>Black or African American alone</b>	1,227	0.6%	1,574	0.7%	347	28.3%
<b>American Indian and Alaska Native alone</b>	1,874	0.9%	1,775	0.8%	-99	-5.3%
<b>Asian alone</b>	2,304	1.1%	3,293	1.5%	989	42.9%
<b>Native Hawaiian and Other Pacific Islander alone</b>	562	0.3%	808	0.4%	246	43.8%
<b>Some Other Race alone</b>	229	0.1%	1,496	0.7%	1,267	553.3%
<b>Two or More Races</b>	5,242	2.6%	13,682	6.1%	8,440	161.0%

Sources: US Census Bureau, 2010 and 2020 Decennial Census

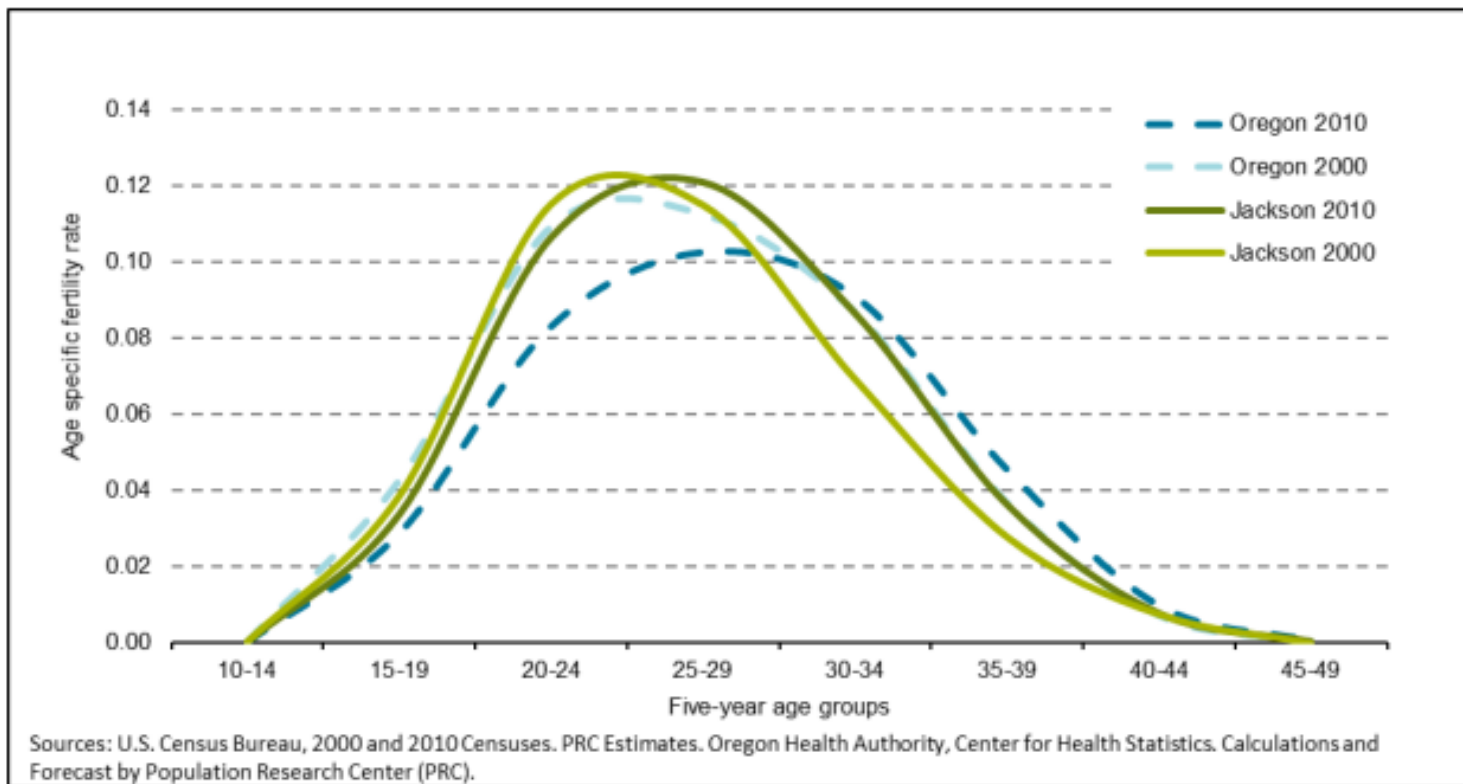
# Additional Historical Trends

*These two age pyramids show the population from the 2000 and 2010 Census. Over time, the population ages forward. The older population accounts for an increasing share of the total population while the share of younger populations decreased.*



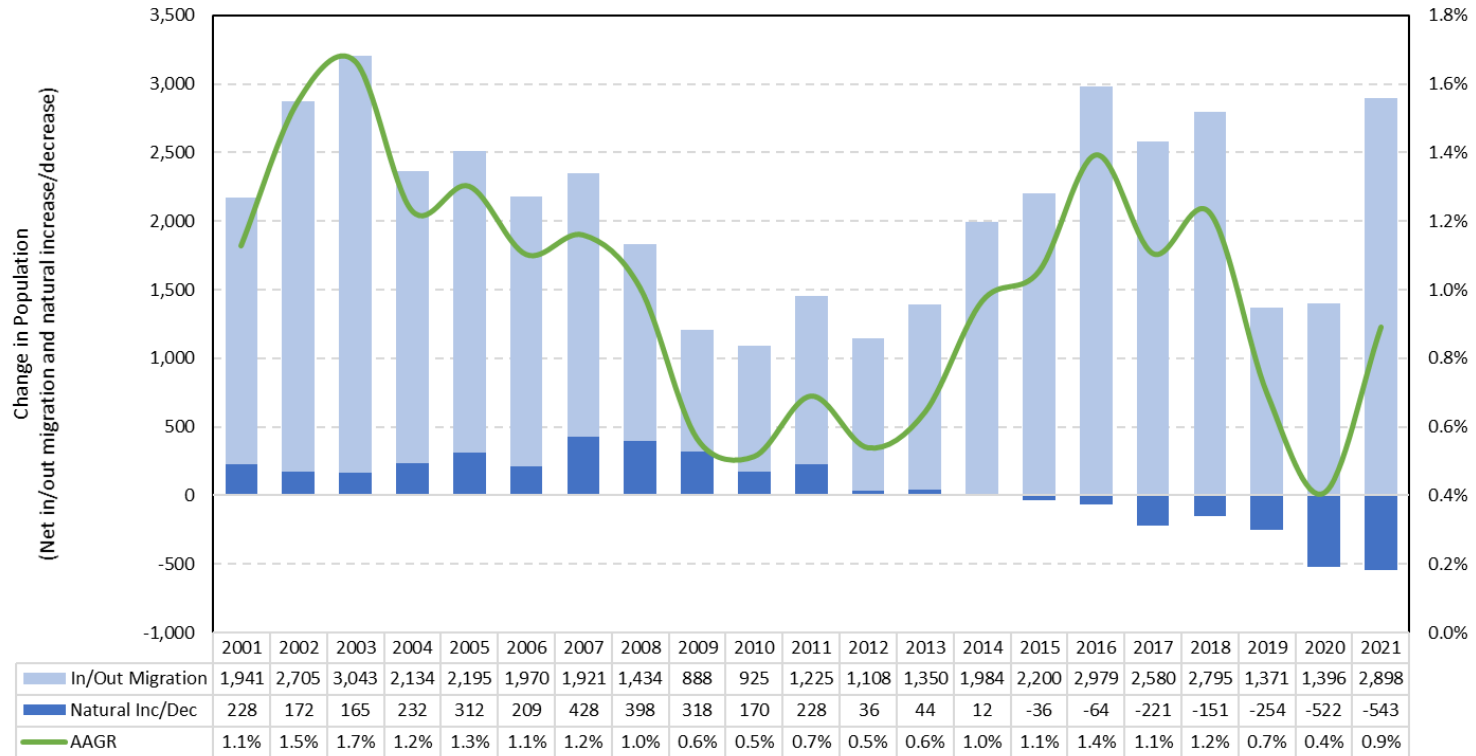
Sources: US Census Bureau, 2000 and 2010 Decennial Census

## State and county level age-specific fertility rates



# Additional Historical Trends

**Components of Population Change and Average Annual Growth Rate (2001-2021)**



Sources: US Census Bureau. Oregon Health Authority (OHA). Calculated by Population Research Center (PRC)