

# Communities of Concentrated Poverty

A Proposal for Oregon



**Sara Chopp**, Doctoral Student  
Public Affairs and Policy Program

with **Beverly Stein**, Senior Fellow  
National Policy Consensus Center

Portland State University

## About the Author

Sara Chopp is a PhD student in Portland State University's Public Affairs and Policy program. She is working as a graduate research assistant for Beverly Stein, Senior Fellow at the National Policy Consensus Center. Sara would like to thank Beverly and the Oregon Business Council (OBC) for the opportunity to be a part of the Poverty Team that is supporting the OBC Poverty Task Force.

# Contents

Executive Summary | 1

Introduction | 3

Addressing Communities of Concentrated Poverty as Well as Individuals in Poverty | 4

Designing Efforts That Focus on Race, Equity and Social Mobility | 5

Communities of Concentrated Poverty: A Multidimensional Definition | 6

Measuring Communities of Concentrated Poverty: The Self-Sufficiency Standard | 7

State Promise Zones: A Proposal from the Center for American Progress | 8

Communities of Opportunity: A Proposal for Oregon | 10

Conclusion | 12

References | 13

Acknowledgements | 14

Interviews | 15

Appendix A | 16

## Executive Summary

The following is a proposal for identifying, measuring, defining and addressing communities of concentrated poverty in Oregon. Based on information gathered from local, state, federal and international organizations and experts, we can best address communities of concentrated poverty in Oregon by:

- 1) **Addressing Communities of Concentrated Poverty as Well as Individuals in Poverty**—The negative effects of poverty are exacerbated for individuals who live in communities of concentrated poverty. Individuals who are not low-income but who live in communities of concentrated poverty also experience the adverse effects of poverty.
- 2) **Designing Efforts That Focus on Race, Equity and Social Mobility**—It is important to focus on race because communities of color are disproportionately represented in areas of concentrated poverty. In order to improve conditions in these communities, there needs to be a focus on improving social mobility. This entails creating more opportunities for quality healthcare, education, economic and job development, housing, and transportation in order to generate greater equity in outcomes in these areas.

*“Poverty is stigmatized and racialized and hurts all people.” –Melissa Boteach, Vice President, Poverty to Prosperity Program, Center for American Progress*
- 3) **Defining Communities of Concentrated Poverty Using a Multidimensional Definition**—The Organisation for Economic Co-operation and Development’s poverty dimensions, outlined in its 2016 *DAC Guidelines*, capture the full picture of living in communities of concentrated poverty; that picture will help communities to better identify challenges, develop outcomes, and create a plan for developing these target areas.
- 4) **Identifying and Measuring Communities of Concentrated Poverty Using the Self-Sufficiency Standard**—The first step to identify communities of concentrated poverty is to use the “High Poverty Hotspots” list from the Oregon Department of Human Services Office of Forecasting, Research, and Analysis. The list is based on the Federal Poverty Level measure. Then, a more accurate indication of the measurement of poverty in these communities can be done using the Self-Sufficiency Standard developed by Dr. Diana Pearce at the University of Washington and adopted by Elizabeth Morehead, Ph.D., and Sheila Martin, Ph.D., at the Institute of Portland Metropolitan Studies at Portland State University.

- 5) **Developing Communities of Opportunity (CoO)**—Use the Center for American Progress State Promise Zone Framework to develop an Oregon version and adapt it to incorporate existing efforts. The state will provide preferred access to the CoO, greater technical assistance and resources like AmeriCorps volunteers, and the community will bring together stakeholders and develop a collective impact strategy (measured by common metrics toward common goals) so that the investment is catalyzed and greater than the sum of its parts.

## Introduction

There are initiatives that have a demonstrated return on investment and clear benefits for *individuals* who live in poverty. However, it is also important to address *communities* of concentrated poverty because individual poverty is impacted by where people live. The negative effects of poverty are more severe for individuals living in communities of concentrated poverty because the effects are concentrated in one area. Consequently, these negative effects spill over and impact all members of the community, regardless of socioeconomic status.

Sara Chopp, a PhD student at Portland State University, interviewed experts (see full list on page 17) to identify promising practices for addressing communities of concentrated poverty in Oregon. This proposal is based on what experts in the field view as the greatest barriers and the greatest opportunities to addressing issues of poverty.

---

*“Racism and equity need to be addressed or we’ll never get there.” –Whitney Grubbs,  
Project Director, Foundations for a  
Better Oregon*

---

According to experts, the greatest barriers to addressing issues of poverty include:

- Structural inequality
- Structural racism
- Color-blind public policy
- Lack of culturally responsive systems
- Fragmentation in social services
- Lack of data and evaluation capacity
- Inability to shift how we communicate about poverty from viewing it as an identity to treating it as an experience.

According to experts, the greatest opportunities for addressing poverty are multi-level, multi-jurisdictional, cross-sector collaborative approaches. We can pursue these opportunities using the collective impact framework developed by John Kania, Managing Director at FSG, and Mark Kramer, Senior Fellow at Harvard University’s Kennedy School and co-founder of FSG. According to FSG, “collective impact is a powerful new approach to cross-sector collaboration that is achieving measurable effects on major social issues.” FSG identifies the following five conditions associated with successful collective impact initiatives “that together produce alignment and lead to powerful results.” To that list, we would add a racial equity lens:

- A common agenda
- Shared measurement systems
- Mutually reinforcing activities
- Continuous communication
- Backbone support organizations
- Racial equity lens

Experts suggest that initiatives should be place-based and community-driven with holistic and integrative approaches that aim to address the drivers of poverty. Communities of concentrated

poverty should be provided with the resources necessary to feel empowered as owners of their solutions. These communities are filled with untapped human resources, talents, and potential as well as unused social capital. If provided with opportunities, residents within these communities can develop or increase the leadership and capacity required to transform their communities. There are many examples of such communities.

## Addressing Communities of Concentrated Poverty as Well as Individuals in Poverty

We need to understand the nature of poverty and all of its complexities in order to design solutions that will lead toward its eradication. There are negative outcomes from poverty that affect individuals living in poverty, but these effects are exacerbated by living in communities of concentrated poverty. People living in these areas suffer from a lack of opportunities in terms of economic and job development, housing, education, and health care. In these communities there is a lack of infrastructure and transportation necessary for development and connection, as well as a lack of culturally responsive services. This has profound effects on these communities, such as high concentration of child maltreatment, domestic violence and substance abuse. These issues endure across generations and produce multigenerational trauma that impacts everyone in these communities regardless of socioeconomic status.

---

*“If you can tackle those 15 percent of neighborhoods then you could solve 80 percent of the problem” –Ian Galloway, Senior Research Associate, Community Development, Federal Reserve Bank of San Francisco*

---

According to Melissa Boteach, Vice President, Poverty to Prosperity Program, Center for American Progress (CAP), high levels of crime, poor schools, and health disparities are apparent for the whole community in areas where 30 to 40 percent of individuals fall below the Federal Poverty Line (FPL).

**Children and families are impacted by living in communities of concentrated poverty.** CAP finds that people who live in “neighborhoods of concentrated disadvantage” experience the following:

- Impaired children’s cognitive development and school performance
- Negative impact on adult employment and earnings
- Increased mental and physical health problems

CAP defines “living in neighborhoods of concentrated disadvantage” in terms of:

- Racial segregation
- Rates of unemployment
- The share of single-parent families
- Exposure to neighborhood violence

**Communities of color are disproportionately affected.** In addition, CAP points out that these issues disproportionately affect communities of color, particularly African Americans, American Indians and Alaskan Natives, and Latinos because these groups are more likely than whites to live in areas of concentrated poverty.

## Designing Efforts That Focus on Race, Equity, and Social Mobility

It is important to understand what factors are correlated with the emergence and persistence of communities of concentrated disadvantage in order to develop appropriate policy interventions for addressing poverty-related issues in such communities. Advantages present in a community can be determined by measuring the level of social mobility experienced by people living there. According to Steven Aldridge (2001, 1) social mobility describes “the movement or opportunities for movement between different social groups, and the advantages and disadvantages that go with this in terms of income, security of employment, opportunities for advancement etc.” CAP draws on research findings by Chetty et al. (2014) that reveal the following community characteristics as high social mobility correlates:

- Less segregation
- Less income inequality
- Better schools
- Greater social capital
- More stable families

Where the high correlates are present, you have high social mobility/advantage. Where the correlates are not present, you have low social mobility/disadvantage. Communities of concentrated poverty are the least advantaged, and communities of color are disproportionately represented in these areas. Therefore, communities of color disproportionately experience inequity in access to opportunities and, consequently, greater disparities in educational and health outcomes. This is why it is important to design efforts that focus on race, equity and correlates of social

---

*“We use a strong racial equity lens. Every strategy is deeply rooted in foundational belief of how do we make sure that communities of color have equal access and opportunities as everyone else in the region.”*

*– Mayra Arreola, Director, Community Collaborations and Investment*

---



mobility.

Targeting social mobility correlates to improved access to opportunities in terms of healthcare, education, economic and job development, and housing and transportation. Such access can improve living conditions and individuals' wellbeing throughout communities of concentrated poverty, because everyone living in these areas, regardless of socioeconomic status, benefits from better conditions created there. When individuals living in communities of concentrated poverty are able to enhance their situations as a result of improved conditions, they are better able to contribute to economic growth in their communities. When communities of concentrated poverty are able to boost their resources, they require less support from outside sources and they are better able to contribute to the greater economies, thus ultimately enhancing prosperity for all.

## Communities of Concentrated Poverty: A Multidimensional Definition

We need to define communities of concentrated poverty in order to know where to focus resources to help communities identify challenges, develop outcomes and create a plan for developing target areas, such as healthcare, education, economic and job development, and housing and transportation.

Experts describe communities of concentrated poverty as neighborhoods where poverty is perpetuated and there are high levels of alienation, disengagement, hopelessness and disconnection. Experts describe these areas as hot spots for disparities in which communities of color are disproportionately represented.

---

*"Hope matters. You have to have hope for what the future holds for you personally and for the community. If you lose faith for the community, you leave the community."*

*– Bill Johnson, Owner, Sage Farms,  
Malheur County*

---

The Organization for Economic Cooperation and Development (OECD) has constructed a broad, multidimensional definition of poverty that identifies the following capabilities as the most important for addressing poverty:

- **Economic capabilities:** The ability to earn income and to have and consume assets is a key to food security, material wellbeing, and social status.
- **Human capabilities:** Health, education, nutrition, clean water, and shelter are core elements of well-being and crucial for improving livelihoods.
- **Political capabilities:** Human rights and having a voice and influence over public policies and political priorities are important for addressing poverty.
- **Socio-cultural capabilities:** The ability to participate as a valued member of a community is important for increasing resources and improving wellbeing.

- **Protective capabilities:** Being enabled to withstand economic and external shock is important for addressing poverty.

According to OECD, these capabilities are relevant across contexts and individuals and should therefore be included in any definition of poverty. This definition has been used to describe the poverty of *individuals*, but it can also be used to describe *communities* of concentrated poverty when the unique characteristics of a place and its people are taken into account. For example, although the experience of living in poverty in rural areas may differ from the experience of living in poverty in urban areas, the OECD dimensions could serve as descriptors for both.

---

*“There are different versions of rural. If you have 30,000 people you have education opportunities and industries. This changes dramatically when you go to less populated areas.” – Bill Johnson, Owner, Sage Farms, Malheur County*

---

## Measuring Communities of Concentrated Poverty: The Self-Sufficiency Standard

OECD recognizes that defining poverty with respect to the poverty dimensions is complicated, and poverty assessments may be expensive to conduct. Therefore, the way poverty is measured must be distinct from how it is defined. Currently, the Federal Poverty Level (FPL) is the most widely used measure for identifying communities of concentrated poverty. Communities of poverty are those where 20–40 percent of individuals fall below the FPL. However, experts agree that the FPL is an inadequate and antiquated measure of poverty because it is based on methodology and living conditions that were relevant in the 1960s. Consequently, the FPL does not capture a realistic percentage of individuals living in poverty and is, therefore, not a good measure for identifying communities of concentrated poverty. An alternative measure is needed for accurately measuring the percentage of individuals in poverty in order to better locate communities of concentrated poverty.

Portland State University’s Dr. Liza Morehead, Director of Research at the Institute of Portland Metropolitan Studies (IMS), and Dr. Sheila Martin, Director of IMS and the Population Research Center use the Self-Sufficiency Standard (the Standard), developed by Dr. Diana Pearce at the University of Washington, as an alternative to the FPL in order to measure poverty in Oregon. The Standard is more accurate than the FPL because it does the following:

- Accounts for housing, childcare, healthcare and transportation costs
- Adjusts for geography and ages of children
- Includes the effect of federal, state and local taxes and tax credits on household income
- Establishes an up-to-date Standard

- Uses the Public Use Micro Sample (PUMS) file of the 2010-2012 American Community Survey (ACS) to determine the percentage of households in Oregon that meet the Standard
- Characterizes poverty in terms of race/ethnicity, household type, education, employment patterns, and occupation

It is difficult to break Oregon down into sub-counties in order to identify geographic areas where there is a high percentage of poverty as defined by the Standard because some counties are sparsely populated. However, we can use the “High Poverty Hotspots” list, produced by the Oregon Department of Human Services (DHS), to identify communities of concentrated poverty within each county based on where 20 percent of individuals fall below the FPL. The “High Poverty Hotspots” list can be used to identify communities of concentrated poverty and the Standard can be used to measure poverty in these areas. Using these tools in combination would show a more accurate poverty rate for these communities. This approach is important because, if the poverty rate in these communities is greater based on the Standard than based on the FPL, more communities of concentrated poverty could become targets for funding.

## **State Promise Zones: A Proposal from the Center for American Progress**

The Center for American Progress (CAP) proposes that states can address communities of concentrated poverty by establishing these communities as “State Promise Zones” (SPZ). According to the U.S. Department of Housing and Urban Development (HUD), the SPZ framework is based on the federal Promise Zone bi-partisan initiative that “designate[d] a number of high-poverty urban, rural and tribal communities as Promise Zones, where the federal government...partner[ed] with and invest[ed] in communities to...create jobs, leverage private investment, increase economic activity, expand educational opportunities, and reduce violent crime.” The federal government provided Promise Zones with the following:

- Support from AmeriCorp VISTA members
- A federal liaison for navigating federal programs
- Priority access to federal grant programs
- Technical assistance from federal agencies
- Tax incentives (pending)

Melissa Boteach, Vice President of CAP’s Poverty to Prosperity Program, suggests that the SPZ framework can be used at the state level to address communities of concentrated poverty. Once these communities are identified, they can be considered priority areas for community-based development, and state leaders can mobilize resources and knowledge in a way that concentrates efforts in these areas.

**Funding the Promise Zones.** States can fund promise zones by leveraging existing resources. CAP suggests that to create income supports in communities of concentrated poverty, states should streamline access to critical work and income supports. Suggestions from CAP include:

- Expanding the state Earned Income Tax Credit and improving tax-time outreach in SPZ areas in order to increase use of the credit and to enhance income supports in these communities.
- Giving priority access to state resources and federal funding streams (i.e. the Social Services Block Grant and the Community Development Block Grant) to communities of concentrated poverty.
- Using AmeriCorps grant funding, and dedicating staff as points of contact to provide added capacity and to help people in the SPZ areas navigate state resources.

See Appendix A for more advice from CAP on what states can do to help communities of concentrated poverty.

**Eligibility.** According to CAP, “Promise Zone applicants are required to outline the outcomes they want to achieve, describe their capacity to do so and the roles of their partners to demonstrate past successes, and commit to using data to drive outcomes.”

In order to be eligible, CAP proposes that applicants meet the following standards:

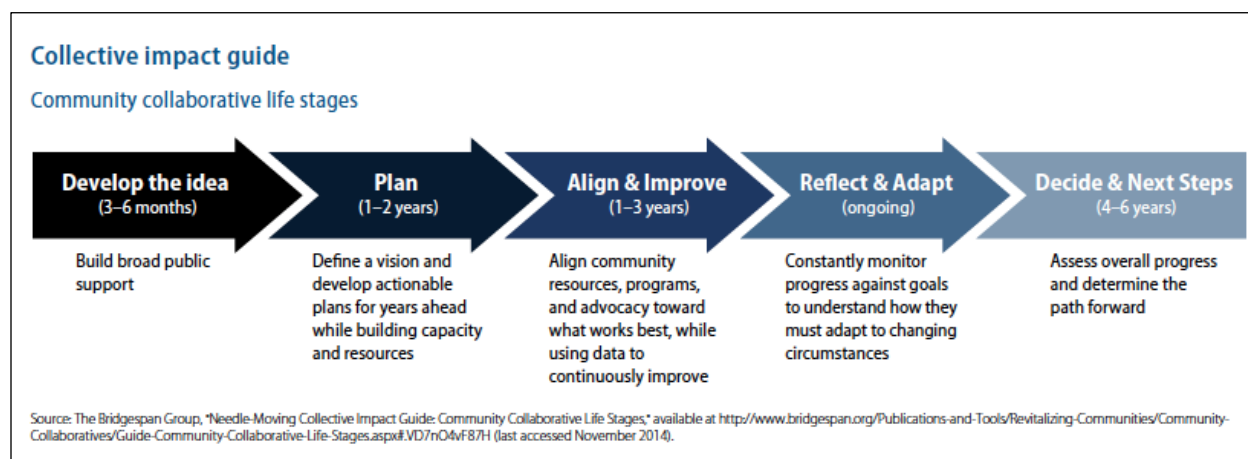
- Demonstrated need with respect to overall poverty indicators;
- Specific geographic area that captures one or more census tracts;
- Designated population size that is specific to rural or urban guidelines to ensure impact for a significant portion of the population;
- Qualifying lead applicant that has capacity and legitimacy for steering collaborative networks; and
- Support from local leadership for the effort.

CAP advises that State Promise Zone applications should focus on:

- Attracting private investment to create jobs and spur economic development;
- Improving the education-workforce pipeline;
- Creating safe and healthy communities; and
- Repairing and preserving housing and infrastructure.

According to CAP, priority should be given to community collaboratives that are between the “Plan” and “Align & Improve” stages in the spectrum of “community collaborative life stages” described in (see figure 1). Applicants should have a lead or backbone support organization that works to create and manage collective impact by coordinating participating organizations.

FIGURE 1



**Evaluation.** Applicants should be evaluated based on strength of their initiative with respect to the capacity of local leaders and the level of commitment among actors, which can be demonstrated by identifying a set of outcomes for revitalizing the community as well as a strategy for reaching those outcomes in addition to describing how data will be used to redirect resources toward what works.

## Communities of Opportunity: A Proposal for Oregon

The SPZ framework can be used to develop “Communities of Opportunity (CoO)” in Oregon. Areas that already have successful initiatives on the ground should be given priority. Therefore, once the communities of concentrated poverty in Oregon are identified, these communities should be provided the opportunity to apply for CoO status based on the SPZ criteria. Consideration should be given to community initiatives that are building on existing organizational initiatives such as the Regional Achievement Collaboratives, Early Learning Hubs, STEM Hubs, Workforce Investment Boards, and Regional Solutions Teams. In addition to meeting the eligibility standards and satisfying the application guidelines suggested by CAP, communities wishing to be considered a CoO would need to:

- **Address communities of concentrated poverty as well as individual poverty**— Demonstrate a commitment to addressing poverty at the community level, as well as the individual level. This would mean targeting community needs, not just individuals, for outreach efforts in addition to addressing structural and systemic issues.
- **Design efforts that focus on race, equity, and social mobility**— Demonstrate commitment to focusing efforts on social mobility correlates and racial equity in order to create more advantages and opportunities in communities of concentrated poverty. This means using a racial equity lens as well as prioritizing efforts for reducing segregation and income inequality, and producing better schools, greater social capital, and stable

families. These actions could help communities break cycles of multi-generational poverty, particularly in communities of color.

- **Use a multidimensional definition to define poverty in the community**—Using the OECD dimensions will allow communities to identify problems, generate solutions, and track progress more effectively. Lena Etuk, a Family Development Specialist and Social Demographer at Oregon State University, uses a similar approach to help communities work towards prosperity. Etuk supports communities in defining vitality from a local perspective according to their own values, norms, and aspirations then develops indicators of that vital future. These indicators are related to social, economic, and environmental outcomes as well as capacity. The communities use these indicators to set targets or goals for each. This goal-setting is followed by an assessment of community vitality which is then used by community leaders to identify priorities and strategies to reach the goals. This approach could serve as a model for how communities could use the OECD dimensions to set goals.
- **Use the Self-Sufficiency Standard to measure poverty in the community**—The FPL is how poverty hotspots are currently defined, but the Self-Sufficiency Standard provides a more accurate measure of poverty in these areas. By referring to the Self-Sufficiency Standards and the Median Household Incomes for Oregon Counties chart to identify the number of households that live in poverty in the community, communities of concentrated poverty could leverage more funding for improving capabilities and increasing social mobility.

At the center of the effort, we need local, state and federal agencies to collaborate with private and nonprofit organizations to braid funding streams, align operating systems, and help increase upward social mobility. These efforts should support community strategies and projects that use the collective impact framework, which includes having a common agenda, shared measurement, mutually-reinforcing activities, continuous communication, and a backbone organization. Community strategies and projects should also focus on social mobility, race, and equity. These combined efforts should be informed by and inform the ways in which poverty is measured and defined with respect to the Self-Sufficiency Standard and the unique characteristics of the communities, respectively. Using this approach could enhance the capabilities of communities of concentrated poverty and the individuals who live there, which could ultimately lead to the expansion of opportunities in these communities. See figure 2 for a description of this process.

---

*“[By] giving [the] poor a real voice and [using this as] the first way of defining what needs to be done...and how it should be done, you get really good ideas that are ground-based and coming from reality [and] at the same time you’re...building confidence of people to engage in the process.”*  
– Michael Heyn, United Nations  
Official (Retired)



FIGURE 2



## Conclusion

Poverty is a complex condition and many barriers limit efforts to eradicate it. However, many promising opportunities for addressing poverty could produce lasting change. We can better understand the complex nature of poverty by defining communities of concentrated poverty using a multidimensional definition, and we can better gauge human need by measuring poverty using the Self-Sufficiency Standard rather than the Federal Poverty Level alone. By using these tools, we can better support communities as well as individuals in need. We can start breaking barriers by designing efforts that focus on race, equity and social mobility. And we can produce greater collective impact by developing Communities of Opportunity where cross-sector collaboration can take place and the community can lead the way towards solutions that make a lasting difference for all.

## References

1. Aldridge, S., and Great Britain. "Social Mobility: A Discussion Paper." Cabinet Office, Performance and Innovation Unit. London, UK, 2001. Accessed April 26, 2016. <http://kumlai.free.fr/RESEARCH/THESE/TEXTE/MOBILITY/mobility%20salariale/SOCIAL%20MOBILITY.pdf>
2. Cabinet Office United Kingdom. "Social Mobility and Community Participation amongst Jordanians in Australia." Accessed April 26, 2016. <http://www.surrey.ac.uk/cronem/files/conf2010papers/Al-momani.pdf>
3. Chetty, Raj, Hendren, Nathaniel, Kline, Patrick and Saez, Emmanuel, "Where is the Land of Opportunity? The Geography of Intergenerational Mobility in the United States'. *The Quarterly Journal of Economics* 129(4) (2014): 1553-1623
4. U.S. Department of Housing and Urban Development. "Promise Zones Overview." Accessed April 26, 2016. <https://www.hudexchange.info/programs/promise-zones/promise-zones-overview/>
5. FSG, Inc. "Collective Impact." Accessed April 26, 2016. <http://www.fsg.org/publications/collective-impact#download-area>
6. Institute of Portland Metropolitan Studies. "Where the Ends Don't Meet in 2014: Measuring Poverty and Self-Sufficiency among Oregon's Families." Accessed April 26, 2016. [http://www.pdx.edu/ims/sites/www.pdx.edu.ims/files/Where\\_the\\_Ends\\_Dont\\_Meet\\_in\\_2014.pdf](http://www.pdx.edu/ims/sites/www.pdx.edu.ims/files/Where_the_Ends_Dont_Meet_in_2014.pdf)
7. Organisation for Economic Co-operation and Development. "The DAC Guidelines: Poverty Reduction." Accessed April 26, 2016 <http://www.oecd.org/dac/povertyreduction/2672735.pdf>
8. Center for American Progress. "A framework for state-level promise zones." Accessed April 26, 2016. [www.americanprogress.org/wp-content/uploads/2014/12/Ross-PromiseZone-report2.pdf](http://www.americanprogress.org/wp-content/uploads/2014/12/Ross-PromiseZone-report2.pdf)



## Acknowledgements

The report benefited from the input and editing of two Portland State University, Public Affairs and Policy PhD students, Sara Friedman and Michael Figueredo, as well as Melissa Boteach, Vice President, Poverty to Prosperity Program, Center for American Progress and Beverly Stein, Senior Fellow at the National Policy Consensus Center. Thank you to Cat McGinnis, Development Editor, College of Urban & Public Affairs, Portland State University, for editing and formatting this report.

## Interviews

A special thank you to all of the following experts who contributed their time and insights to this report.

Mayra Arreola  
Director  
Community Collaborations and  
Investment  
United Way

Rocque Barros  
Director  
Ford Institute  
The Ford Family Foundation

Donna Beegle  
Owner  
Communication Across Barriers

Melissa Boteach  
Vice President  
Poverty to Prosperity Program  
Center for American Progress

Lena Etuk  
Family Development Specialist  
Social Demographer for Extension  
Service  
Family & Community Health  
Oregon State University

Ian Galloway  
Senior Research Associate  
Community Development  
Federal Reserve Bank of San Francisco

Whitney Grubbs  
Project Director  
Foundations for a Better Oregon

Michael Heyn  
Official (retired)  
United Nations

Bill Johnson  
Owner  
Sage Farms

Peter Tromba  
Policy and Research Director Chief  
Education Office  
State of Oregon

Janet Walker,  
Co-Director  
National Wraparound Initiative  
Director  
Research and Training Center  
Pathways to Positive Futures

Greg Wolf  
Director  
Oregon County Solutions Center

Nancy Straw  
Director  
Community Economic Development  
The Ford Family Foundation

# Appendix A

## More Advice from CAP

1. To create income supports, states should:
  - a. Reduce states' administrative costs by building upon lessons learned from demonstrations such as the Work Support Strategies initiative (Medicaid/CHIP/SNAP/TANF)
2. To attract private investment and create jobs, states should:
  - a. Require Promise Zones applicants to map out their community investment infrastructure
3. To create an education-workforce pipeline, states should:
  - a. Ensure state Promise Zones applicants align their education and workforce development systems (WIOA; SIGs)
  - b. Target smaller educational funding streams to Promise Zones (Prioritize for after school programs; 21st CCLC)
  - c. Outline expectations for how state colleges and universities should participate in the Promise Zones initiatives
  - d. Support workforce development efforts that align with employer needs and increase access to jobs
  - e. Prioritize for funding for public school and workforce development services (WIOA; creating opportunity for high school students to get technical education)
  - f. Establish subsidized jobs in Promise Zones to help families and the economy (TANF)
  - g. Create city-state resource hubs to help screen residents for benefits eligibility and connect them with the benefits they qualify for but are not receiving
  - h. Create financial empowerment centers to help residents build personal assets (Life Prosperity Accounts; flexible cash assistance)
4. To create safe and healthy communities, states should:
  - a. Require localities to develop a plan for conducting a community health needs assessment, or CHNA (Affordable Care Act; Navigator grant awards; Medicaid; CHIP)
  - b. Require localities to prioritize resilience measures in the community development efforts
  - c. Support efforts that deter crime (JAG)
  - d. Enact reforms around the use of criminal records (Ban the Box)
5. To develop housing and infrastructure, states should:
  - a. Consider policies to enable and promote the rehabilitation of affordable housing (LIHTC; CDBG; Pay for Success)

- b. Review and update regulatory policies to reduce barriers for development (direct rent subsidies; LIHTC; CDBG; Pay for Success)
- c. Protect households from displacement (CDBG; Pay for Success)
- d. Support greater access to transportation throughout the Promise Zones initiative (CDBG; Pay for Success)
- e. Ensure a greater connection between transportation and housing development (CDBG; Pay for Success)