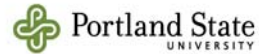


Demography as Destiny? Socioeconomic Trends in the Portland Metropolitan Region



Sheila A. Martin, Director
Jason R. Jurjevich, Assistant Director
Institute of Portland Metropolitan Studies (IMS)
Population Research Center (PRC)



Summary

- Demography = Economy
- Migration has immediate (and often enduring) impacts
- Portland is an attractive destination for many people
 - Domestic vs. International migrants
- Educational attainment and the key to our future

Population Dynamics

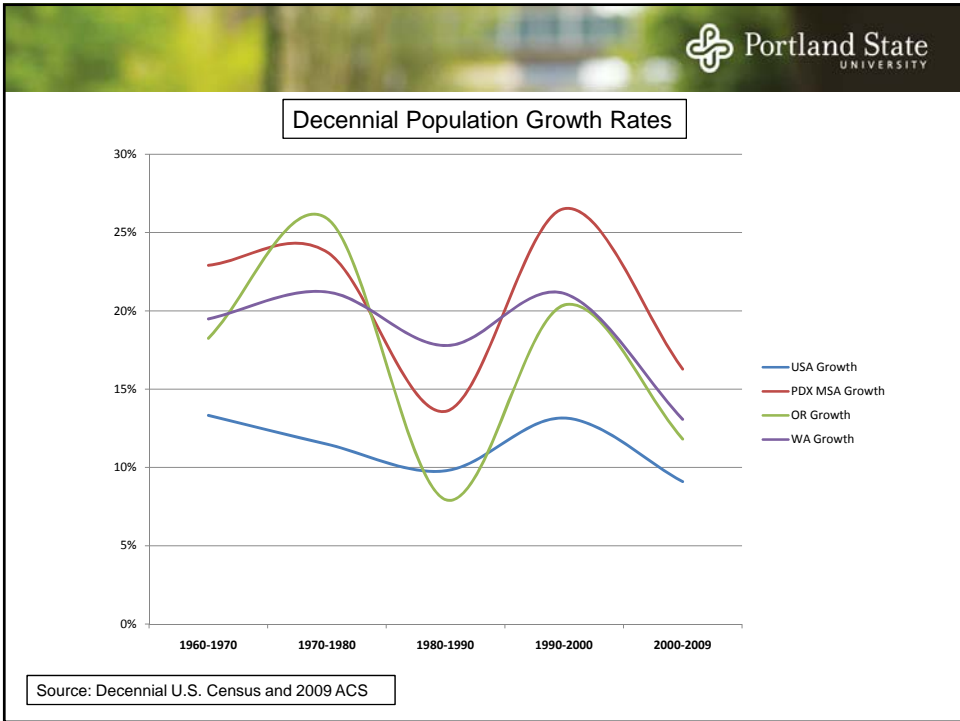


- Population Equation:
 - Population Change = Births – Deaths + Net Migration
- Focuses:
 - Change in population size
 - Change in population composition
 - ‘The Spatial’ of population

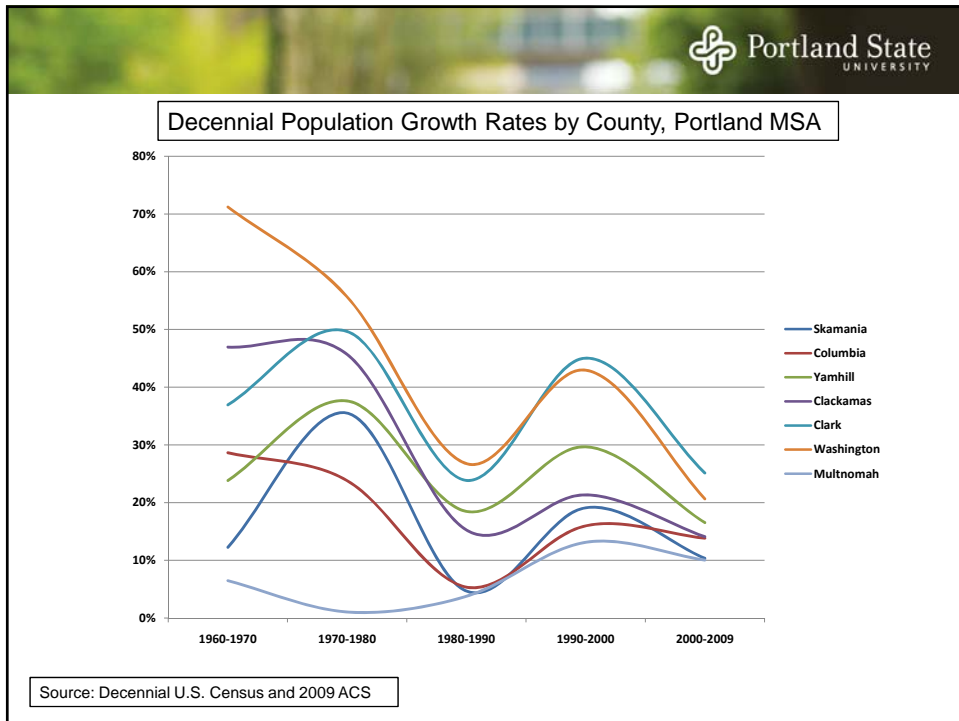
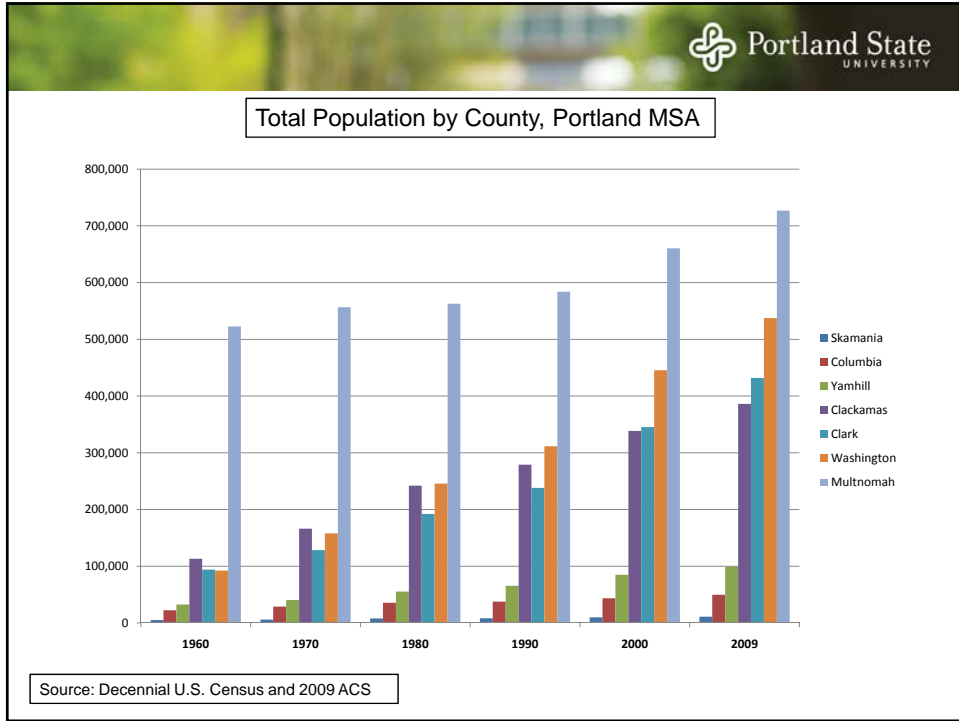
Demographic Data Sources

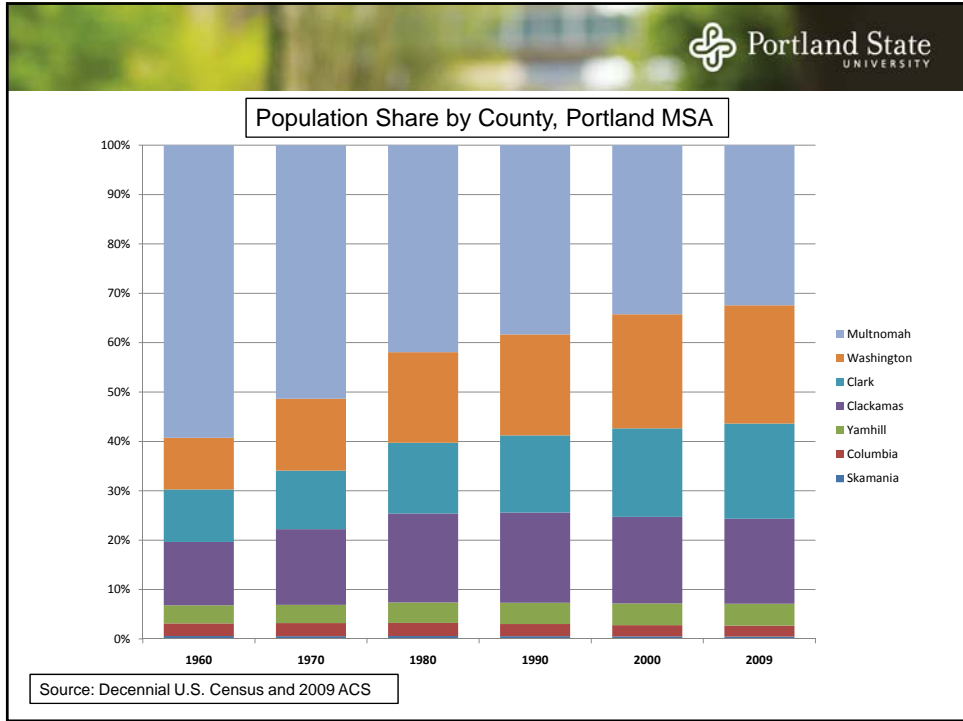
- U.S. Census Bureau:
 - Decennial Census
 - American Community Survey (ACS)
 - Current Population Survey (CPS)
- Post-Censal population estimates
 - Population Research Center (PRC)
 - U.S. Census Bureau
- Population Forecasts
 - Office of Economic Analysis (OEA)
- Administrative records

Portland State UNIVERSITY

Regional demographic trends








Population Change (2000-2009), Portland MSA

	2009 U.S. Census Population Estimate	2000 Census Population	Population Change 2000-2009	Percent Increase
Oregon	3,825,657	3,421,399	404,258	11.8%
Washington	6,664,195	5,894,121	770,074	13.1%
Clackamas County	386,143	338,391	47,752	14.1%
Columbia County	49,592	43,560	6,032	13.8%
Multnomah County	726,855	660,486	66,369	10.0%
Washington County	537,318	445,342	91,976	20.7%
Yamhill County	99,037	84,992	14,045	16.5%
Clark County	432,002	345,238	86,764	25.1%
Skamania County	10,894	9,872	1,022	10.4%

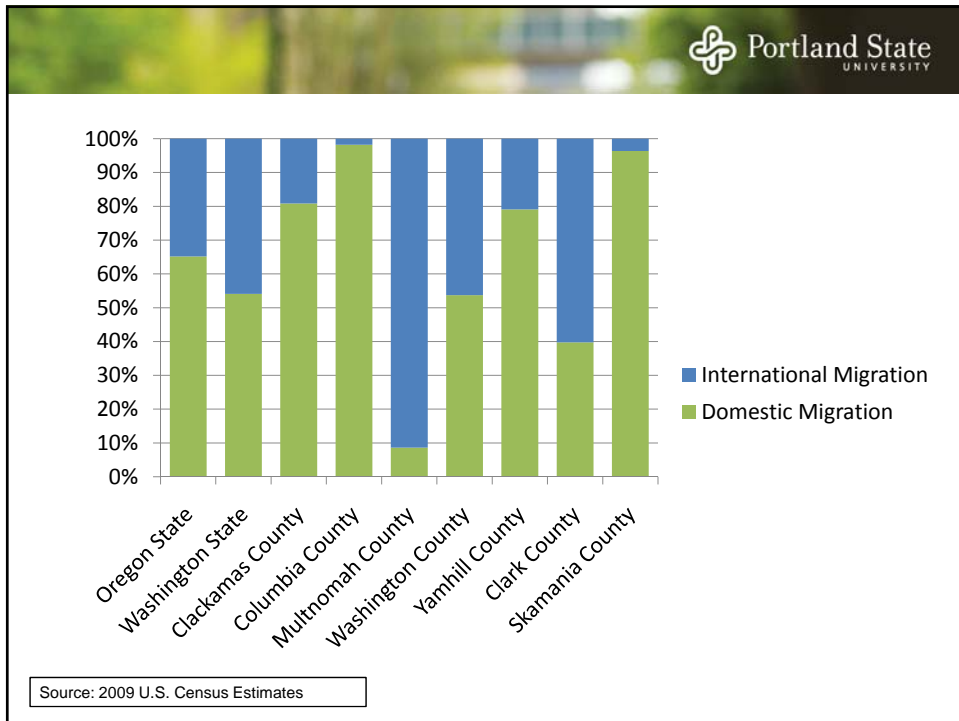
Source: 2009 U.S. Census Estimates

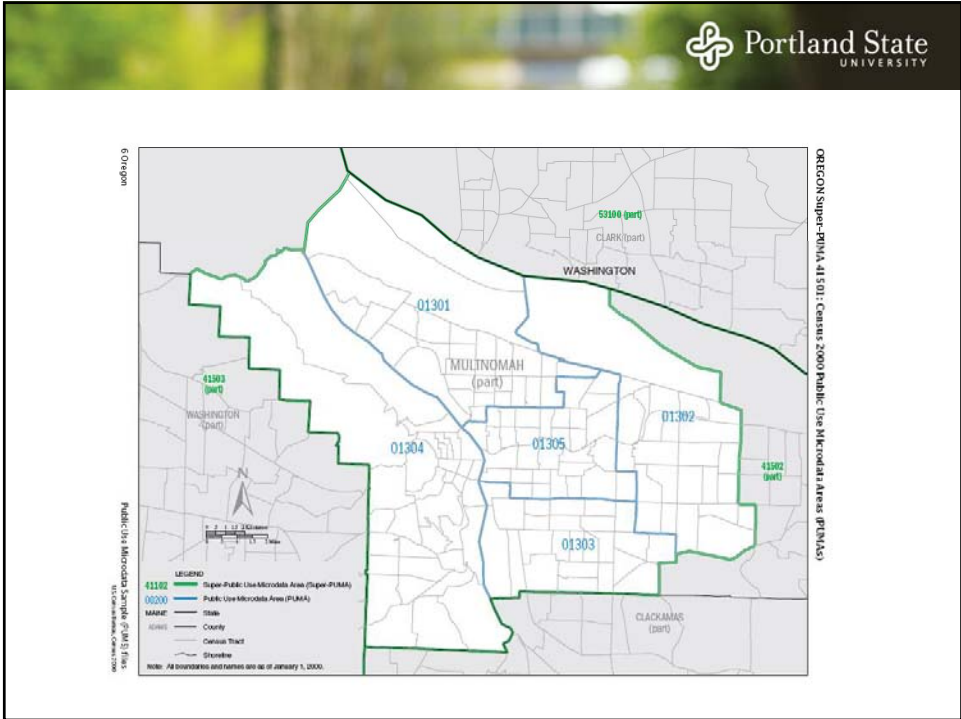
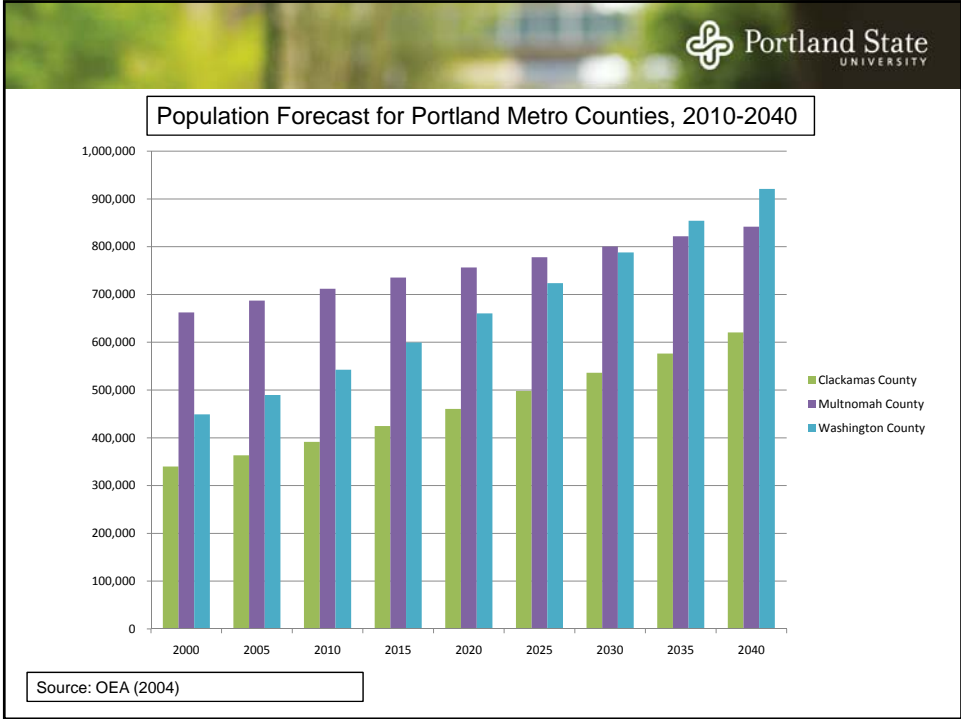


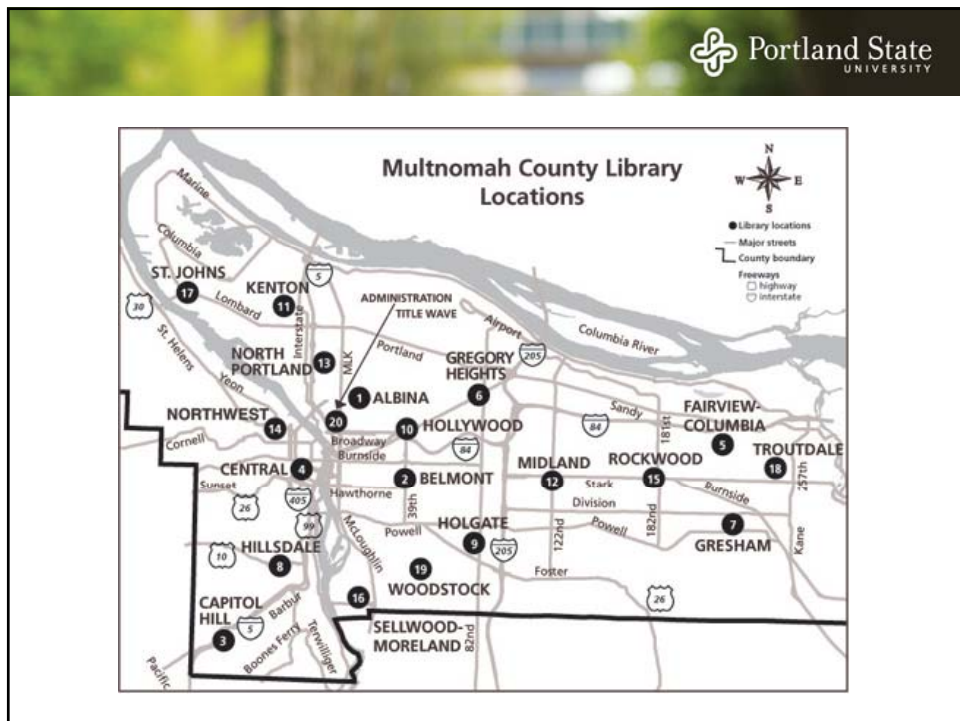
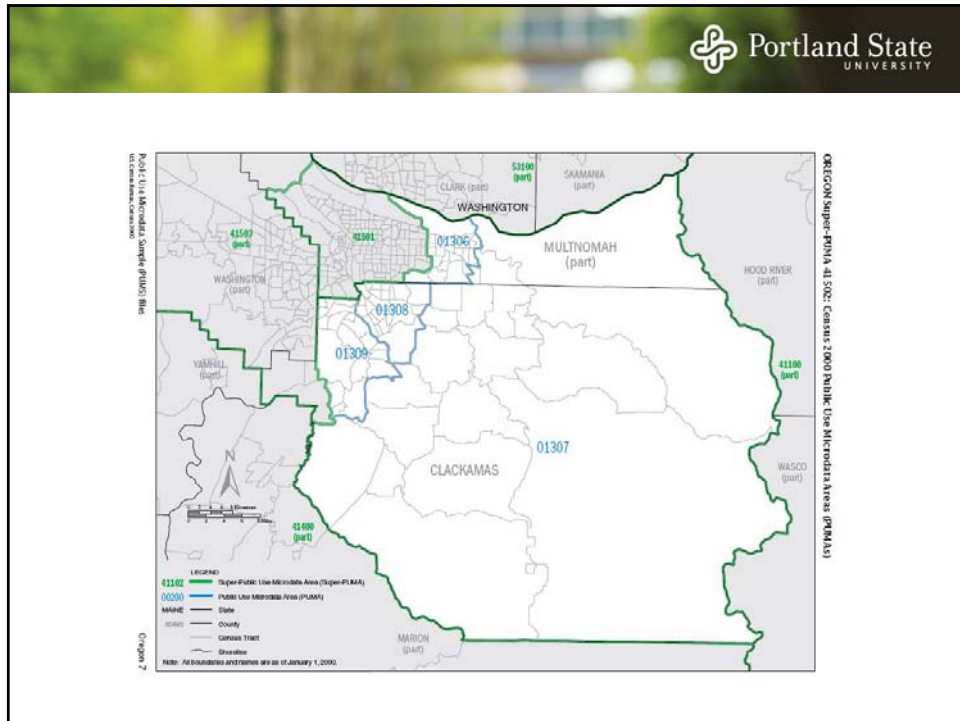
Components of Population Change (2000-2009), Portland MSA

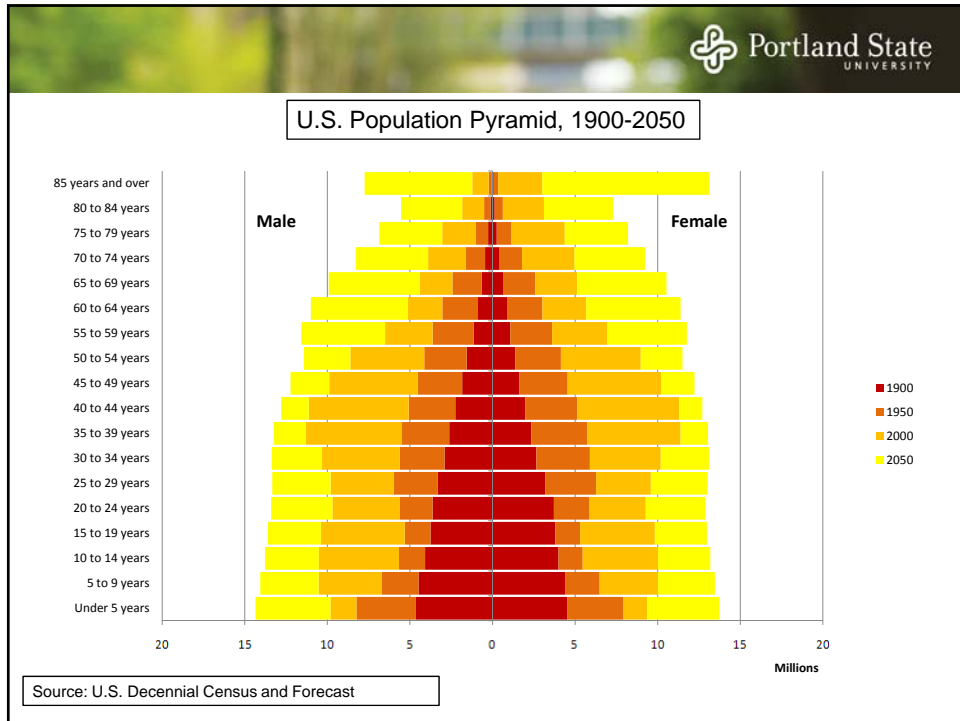
	Births 2000-2009	Deaths 2000-2009	Natural Increase 2000-2009	Net Migration 2000-2008	Percent Migration
Oregon	433,972	284,372	149,600	274,031	64.7%
Washington	772,324	424,029	348,295	440,988	55.9%
Clackamas County	37,655	25,675	11,980	37,497	75.8%
Columbia County	4,705	3,424	1,281	4,965	79.5%
Multnomah County	89,735	51,803	37,932	32,685	46.3%
Washington County	70,962	25,539	45,423	49,393	52.1%
Yamhill County	11,348	6,809	4,539	9,899	68.6%
Clark County	51,962	23,977	27,985	9,466	25.3%
Skamania County	962	676	286	792	73.5%

Source: 2009 U.S. Census Estimates



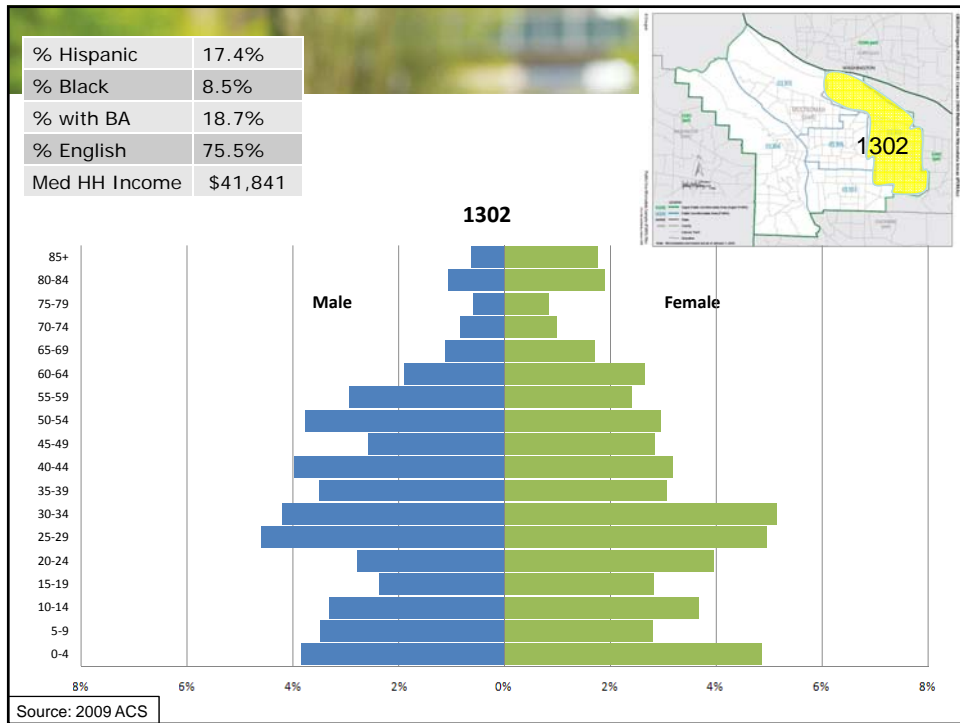
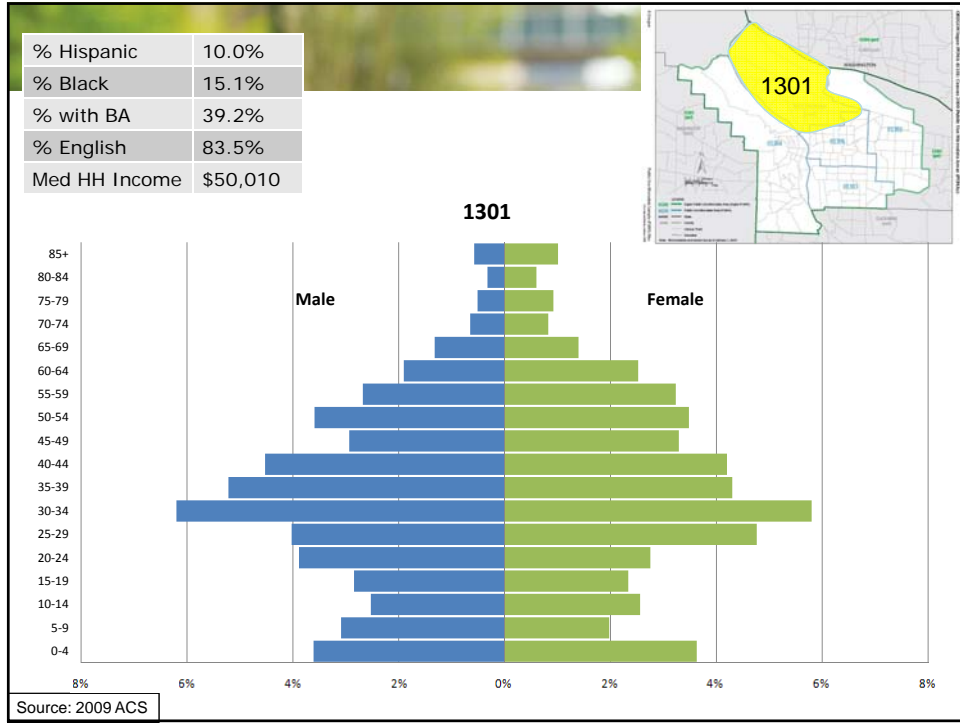


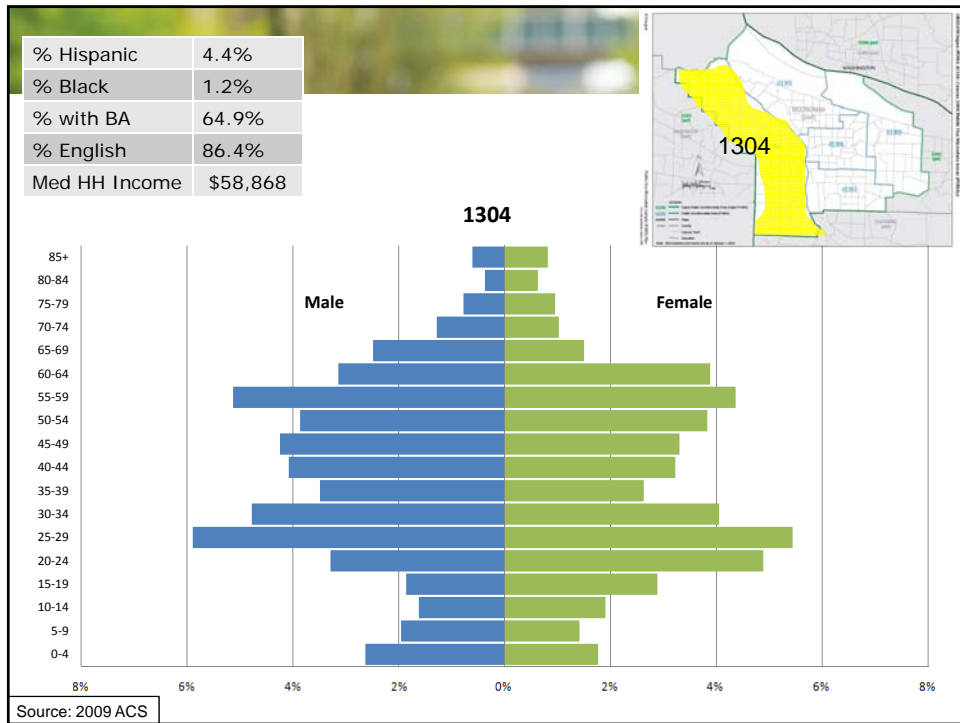
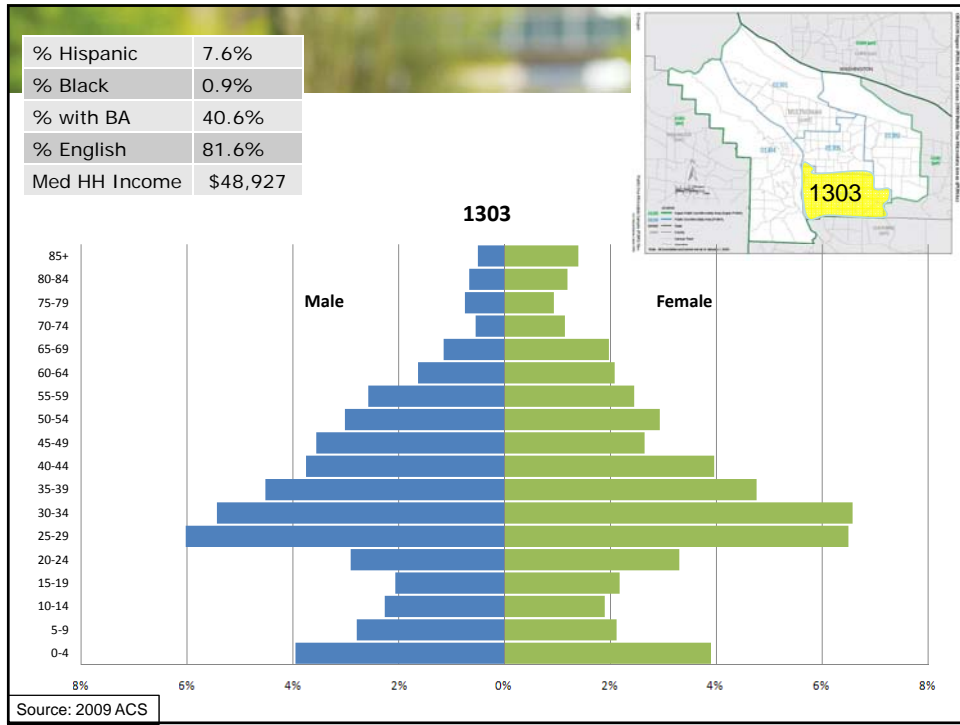


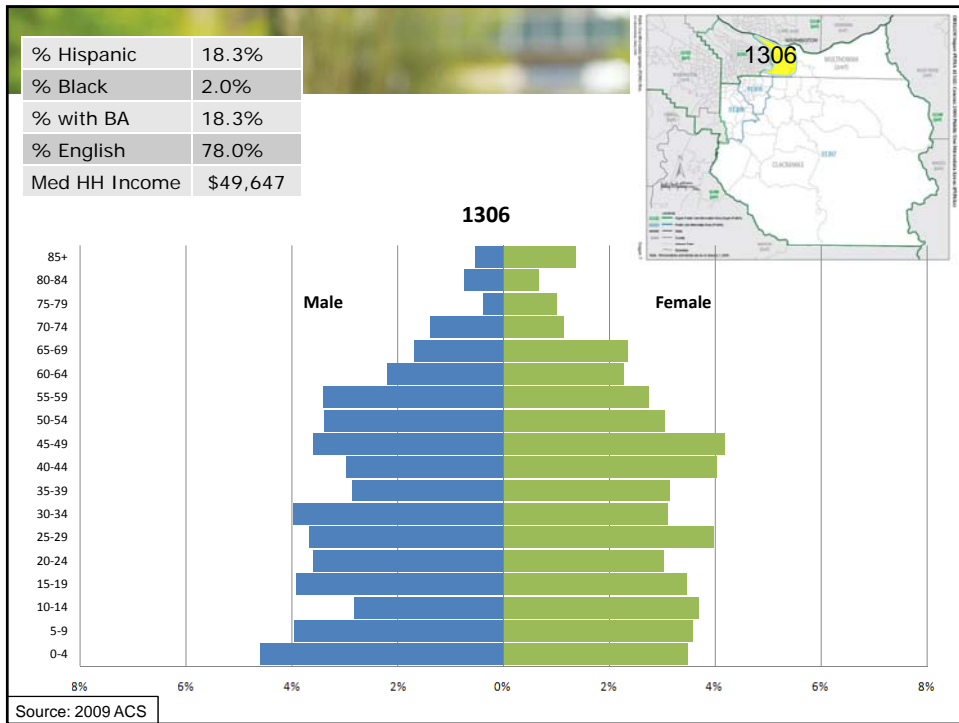
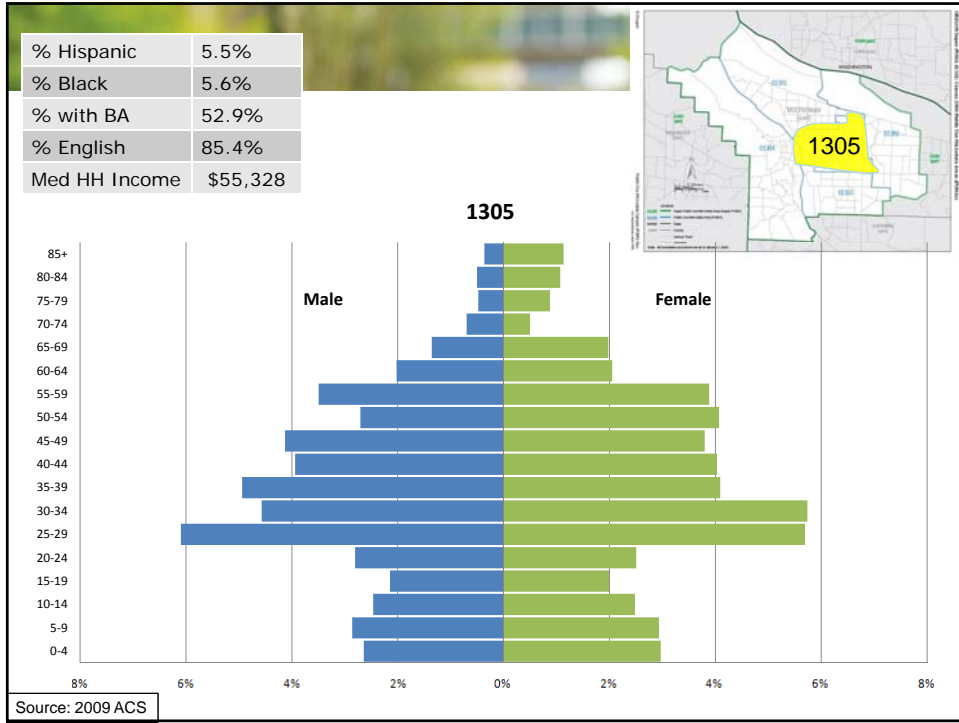


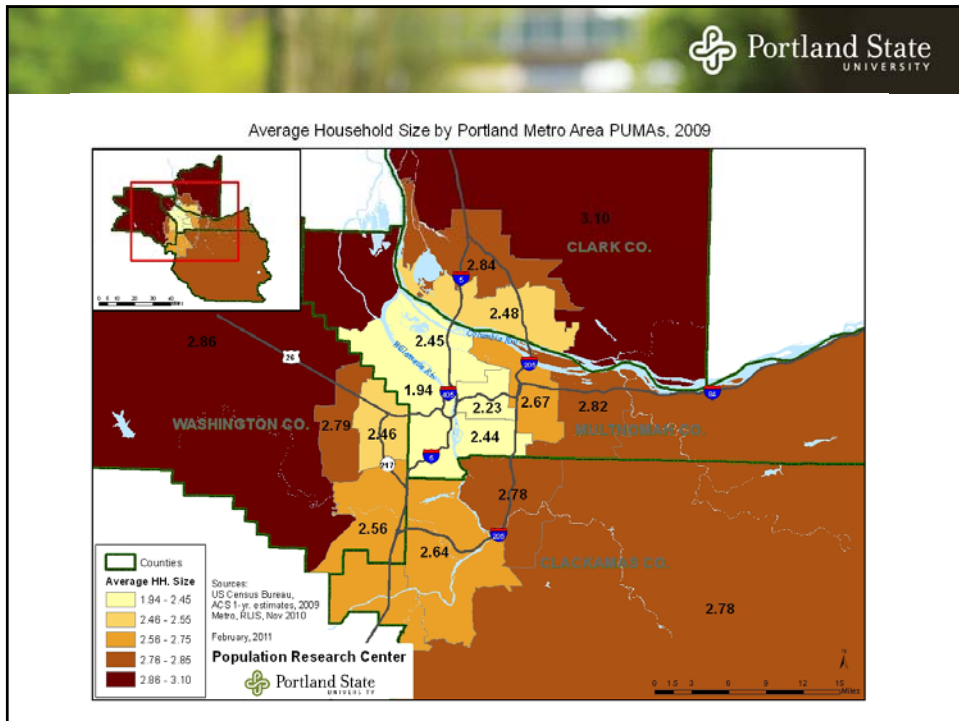
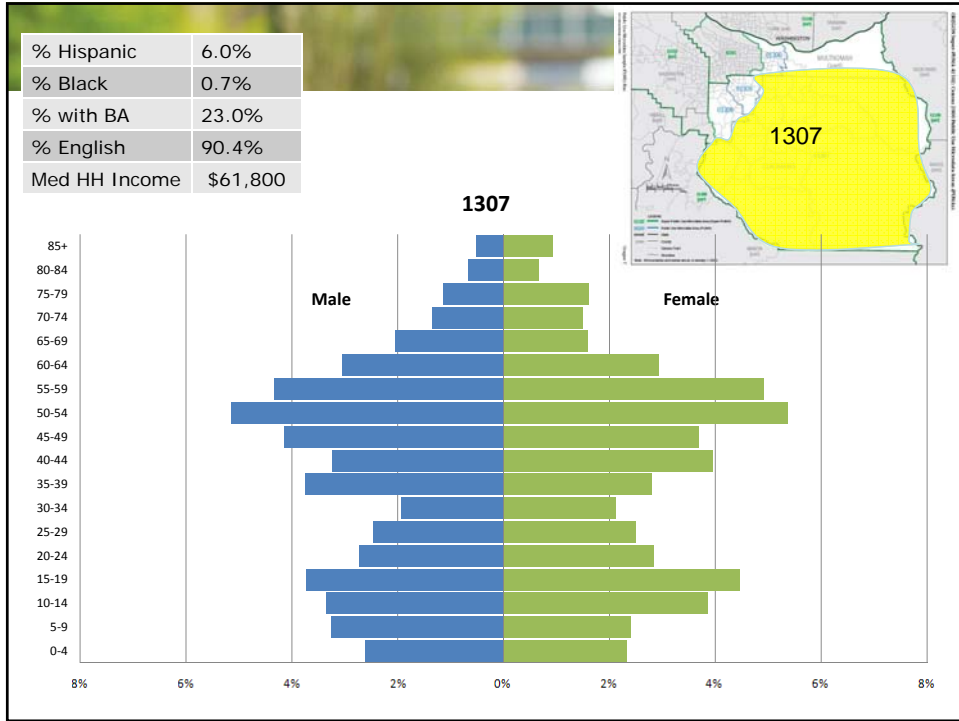
Multnomah County Demographics

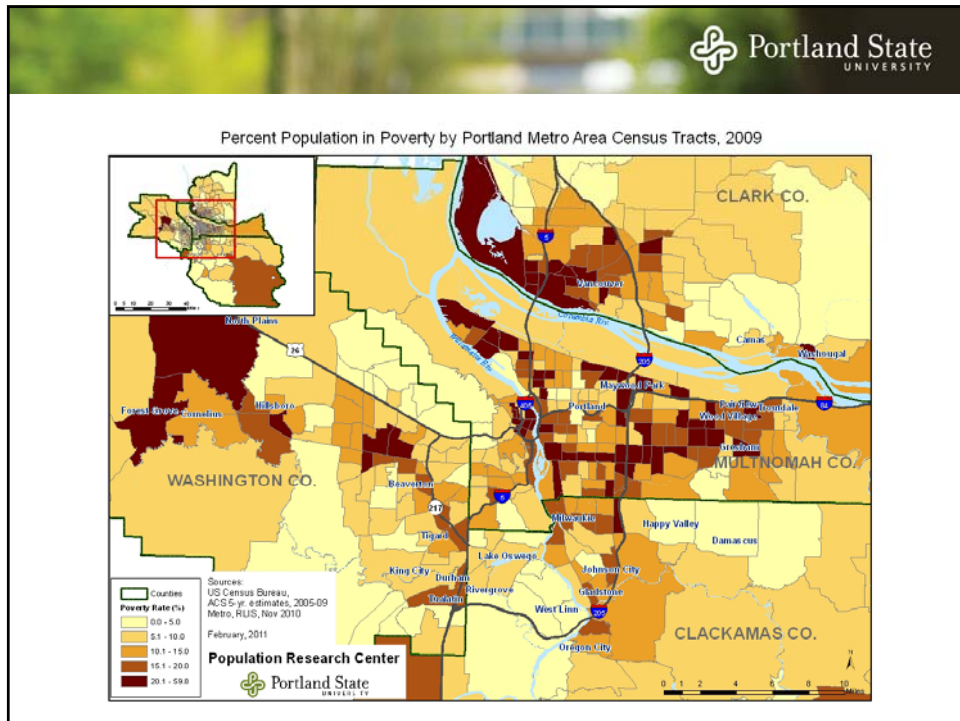
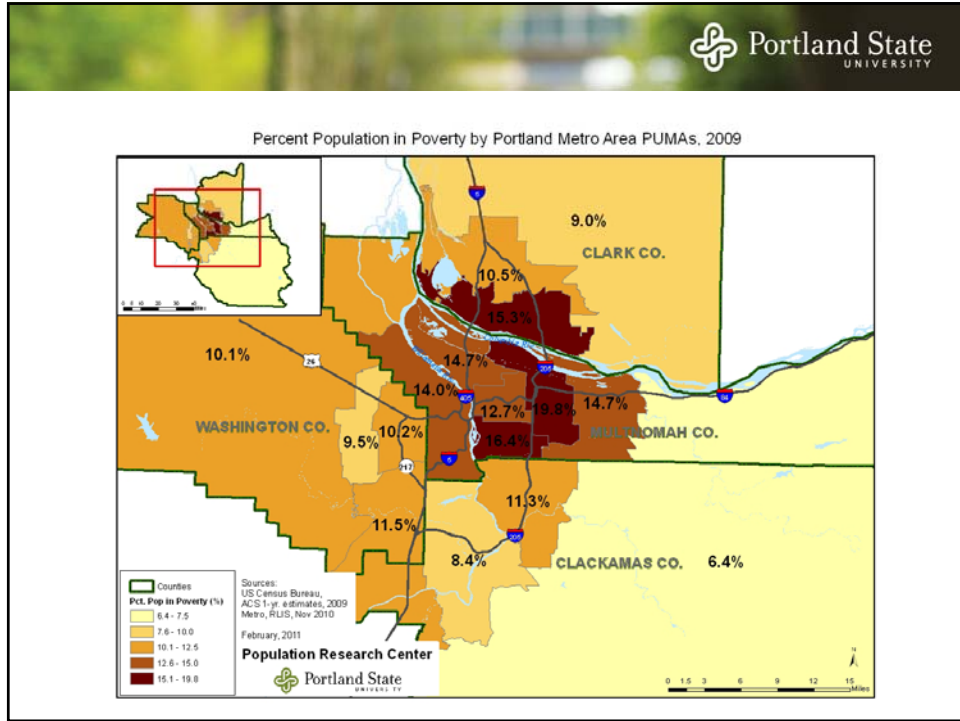
- Household Size 2.35
- % Hispanic 10.9%
- % Black 5.2%
- % with Bachelor's degree 39.1%
- % English Primary Language 83.0%
- Median Household Income \$50,773

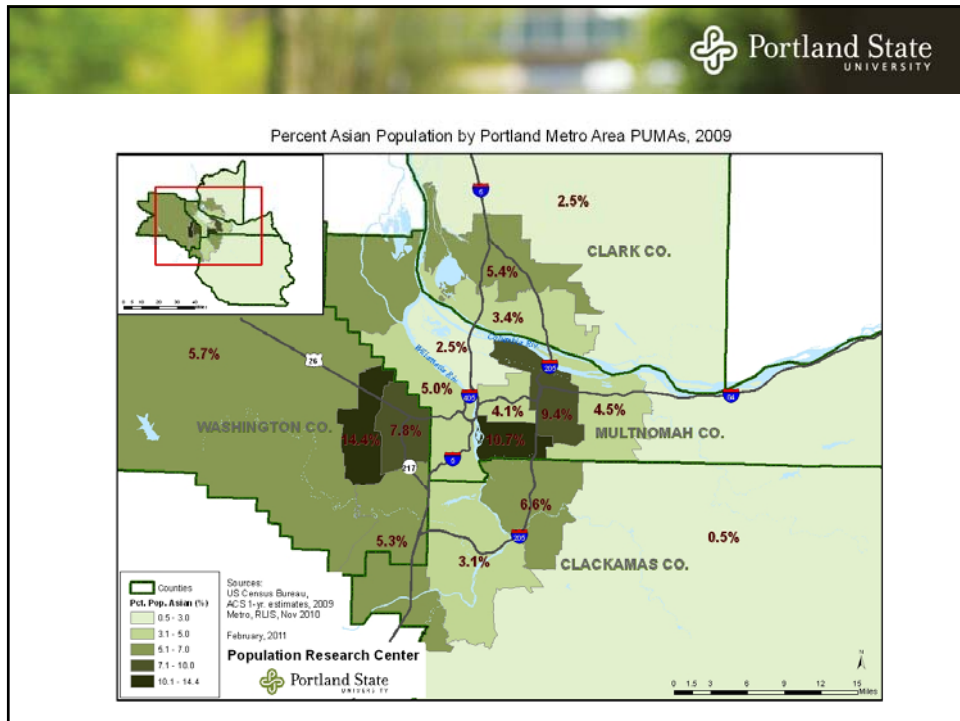
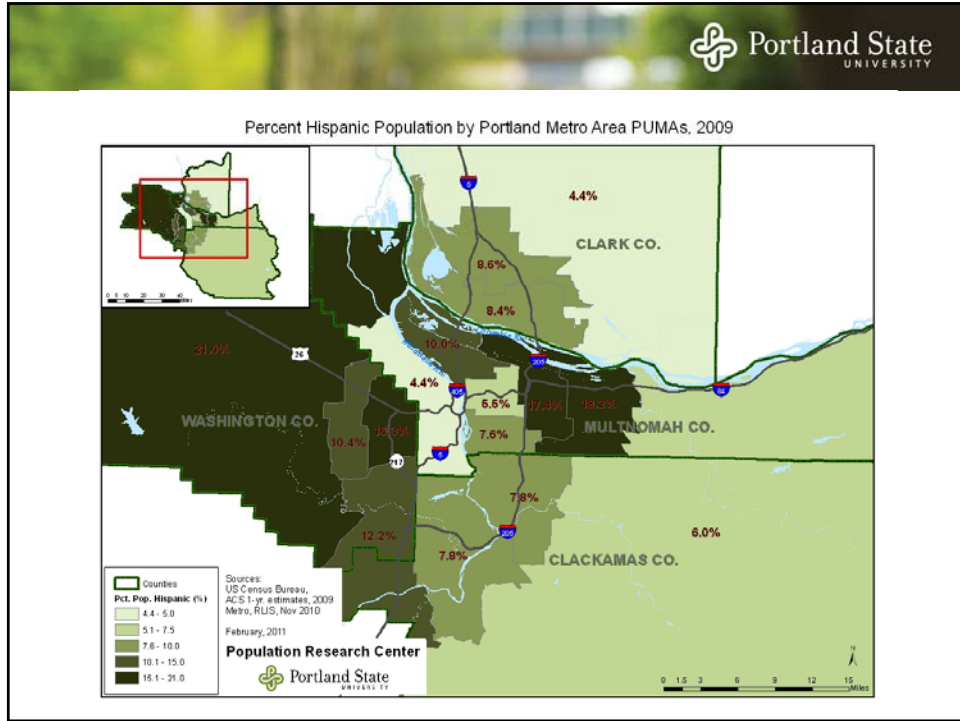


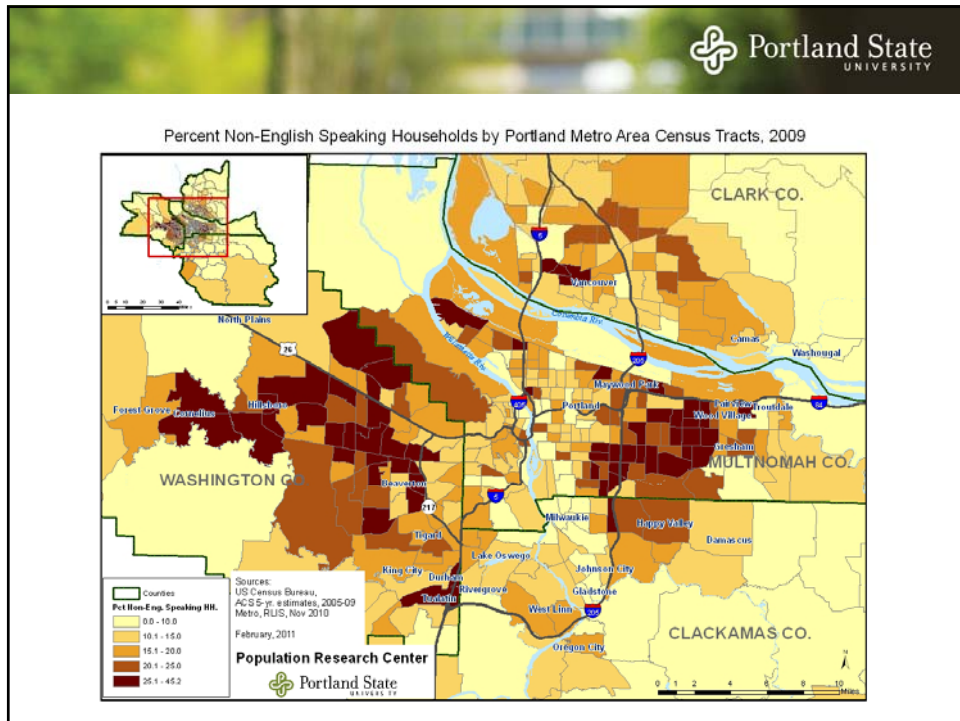
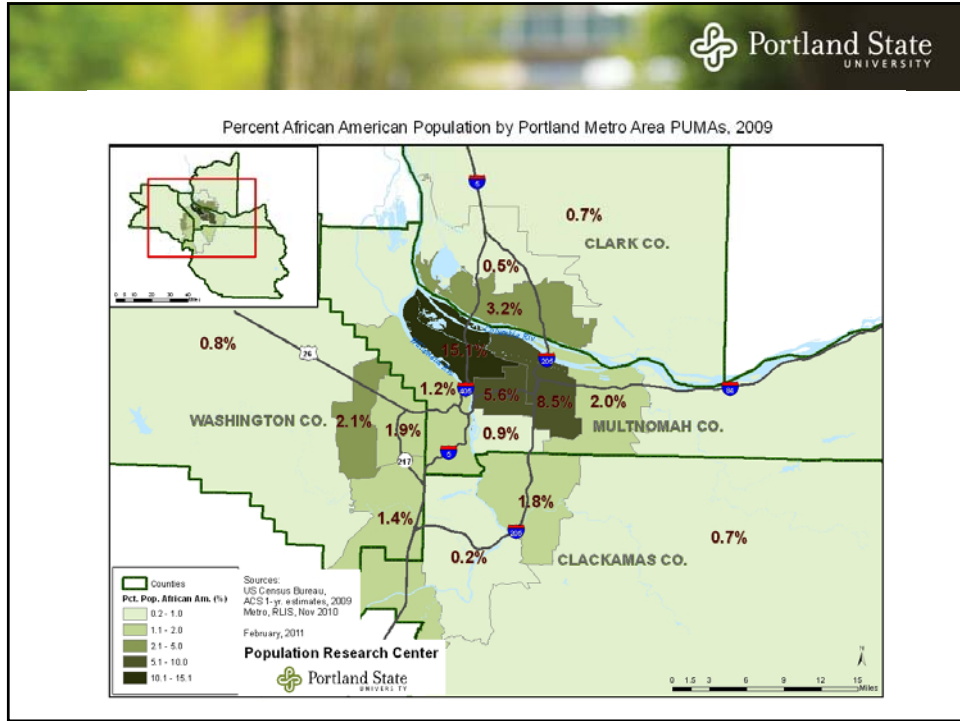


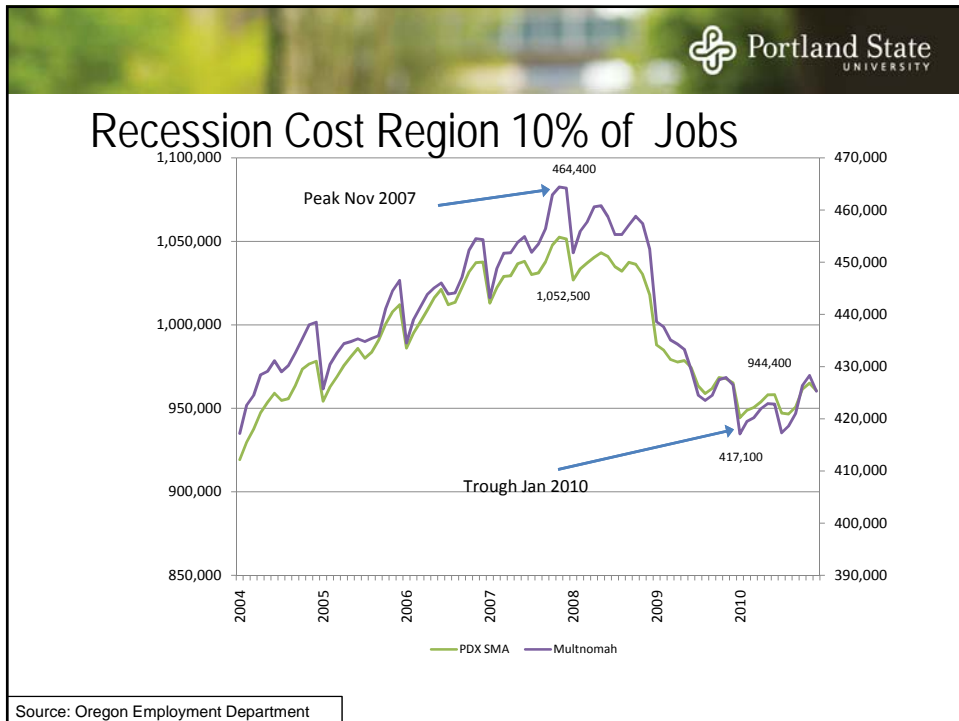


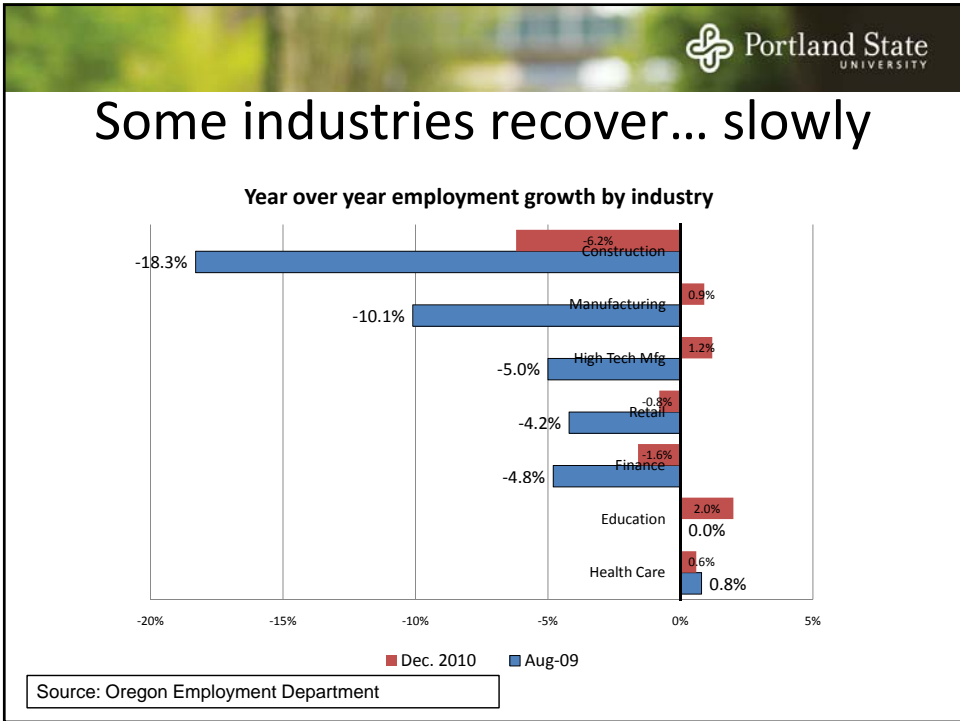
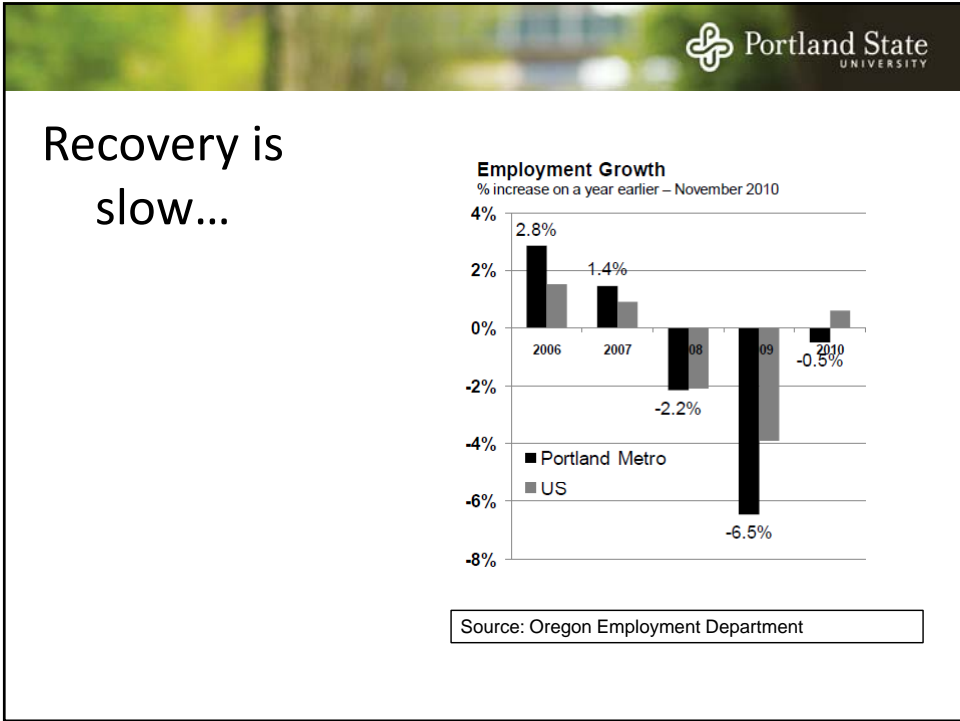


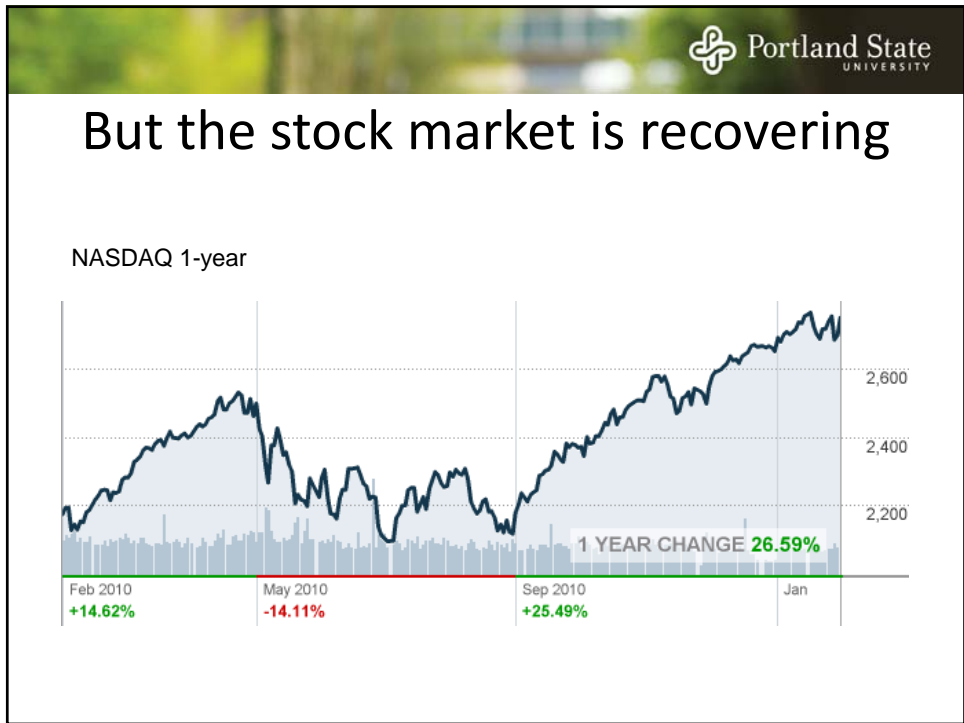
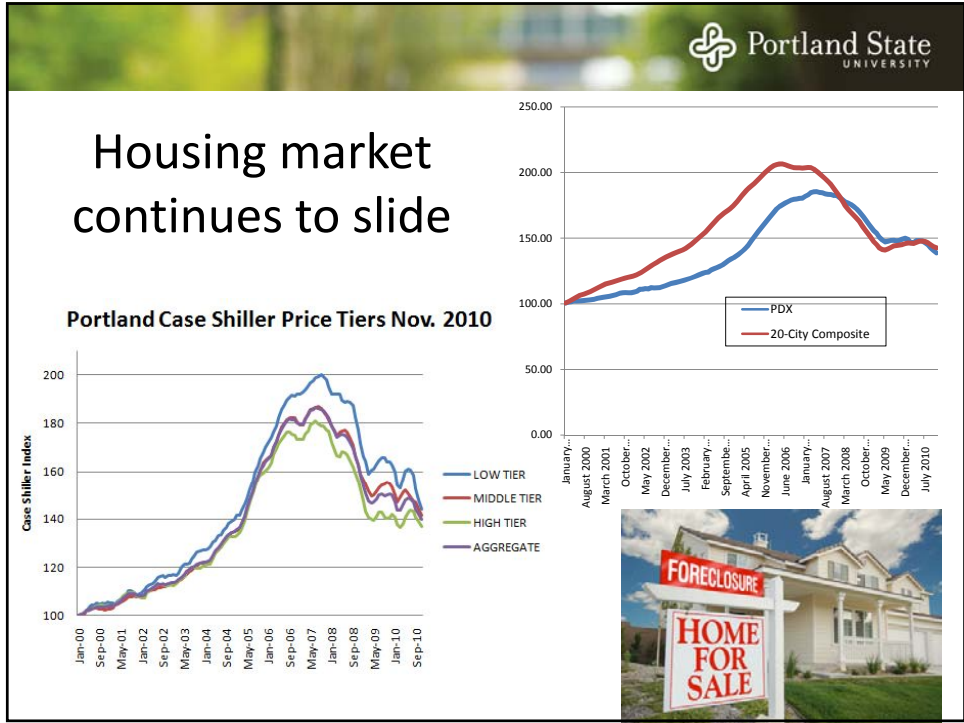













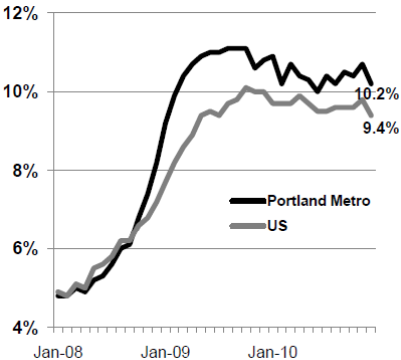


Economic Opportunity affects Migration...

Average Annual Net Migration of Adults with College Degrees per 100 residents


2005-2007		2008-2009	
Metro	Rate	Metro	Rate
1.Charlotte	2.77	1.Austin	2.81
2. Austin	2.31	2.Raleigh	1.98
3.Tuscon	2.13	3. Portland	1.59
4 Riverside	2.07	4. Riverside	2.34
5.Phoenix	2.07	5.Phoenix	1.31
6.Las Vegas	2.06	6.Charlotte	2.30

Unemployment Rate Through December 2010 (Seasonally Adjusted)



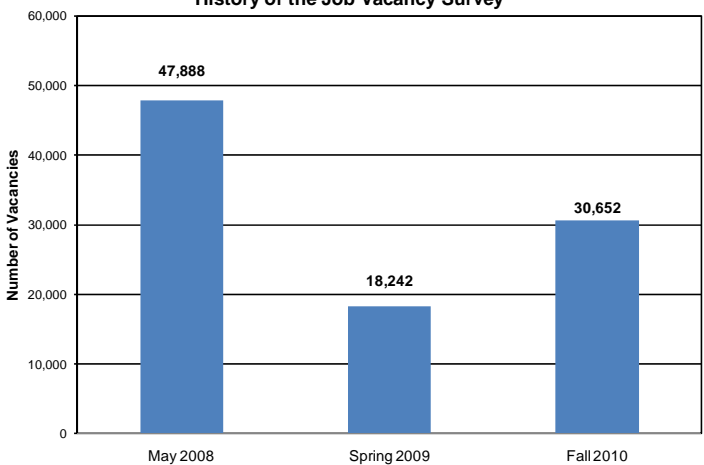
Source: Frey, William H. "Migration Declines Further: Stalling Brain Gains and Ambitions Brookings Institution Jan 2011

Source: Oregon Employment Department

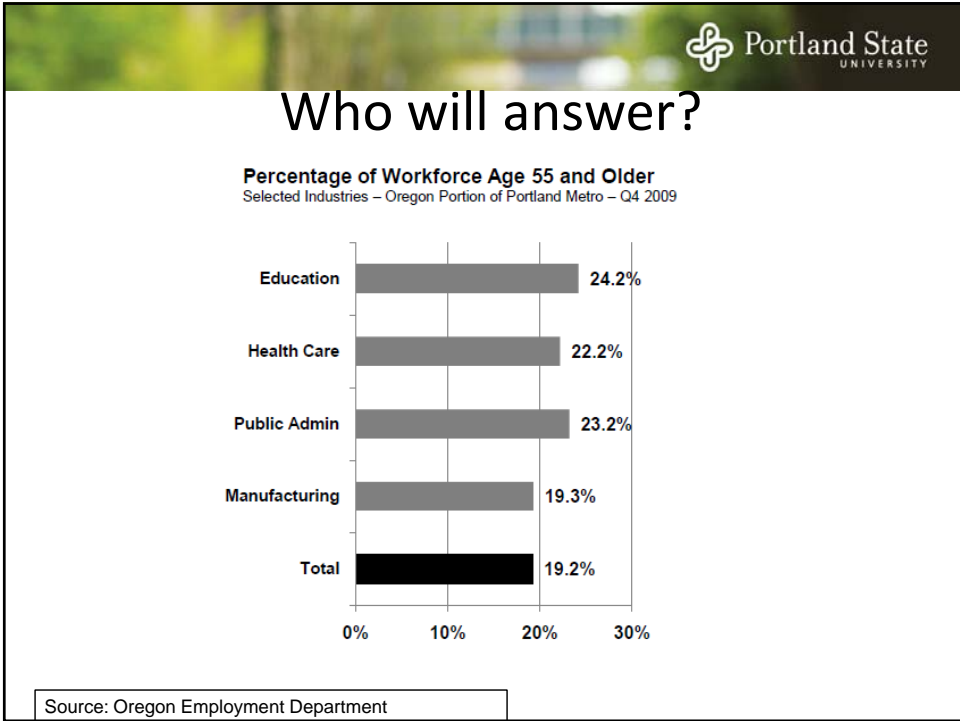


Opportunity is beginning to knock

Job Vacancies in Oregon, History of the Job Vacancy Survey



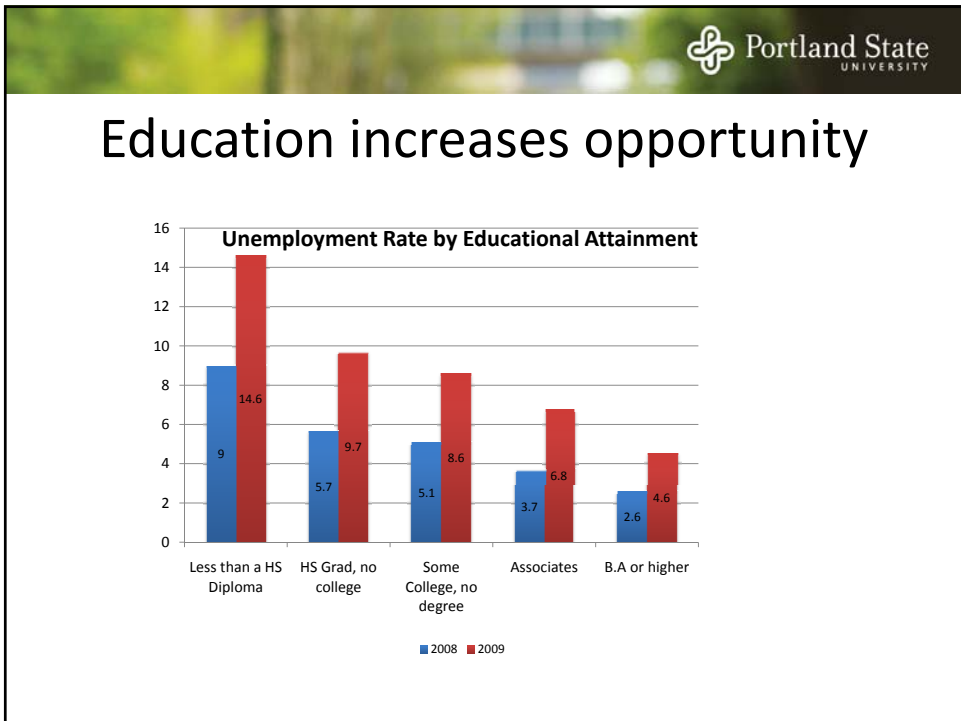
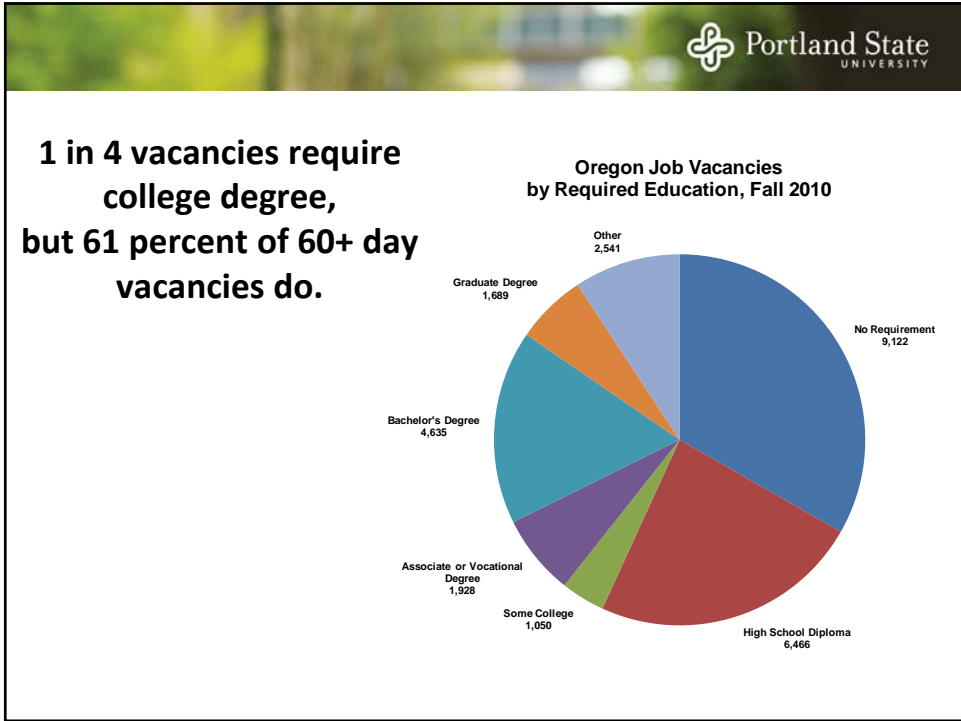
Source: Oregon Employment Department

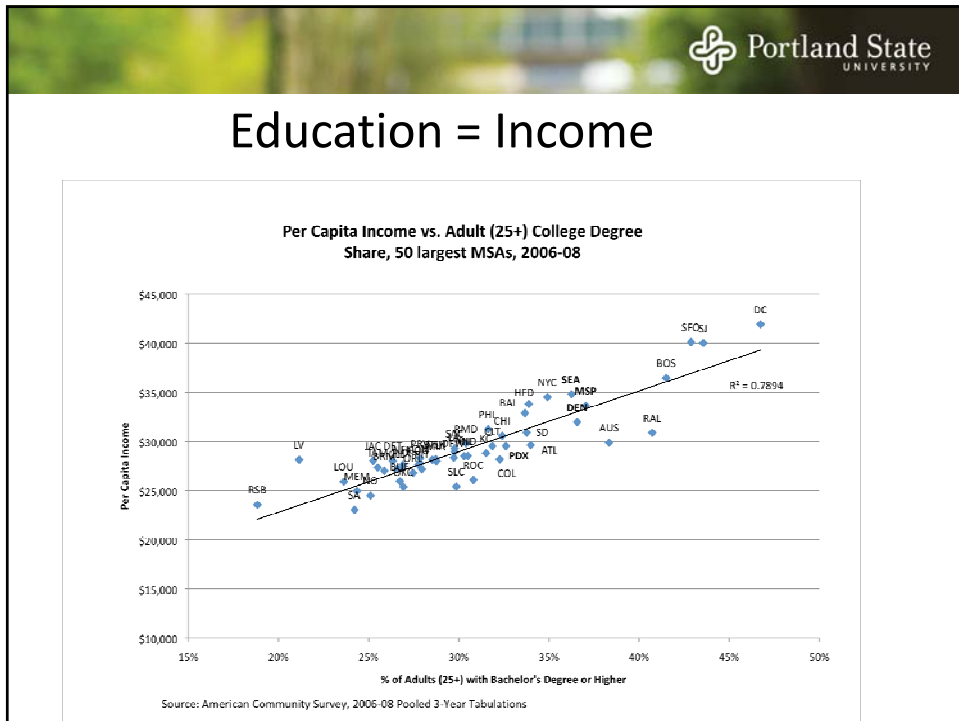
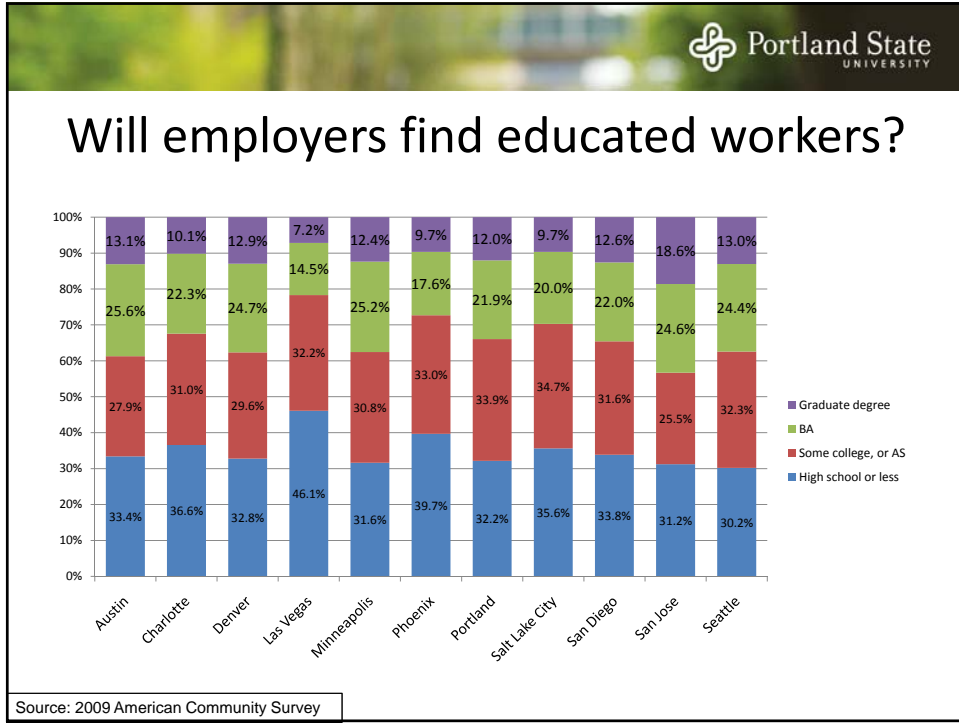


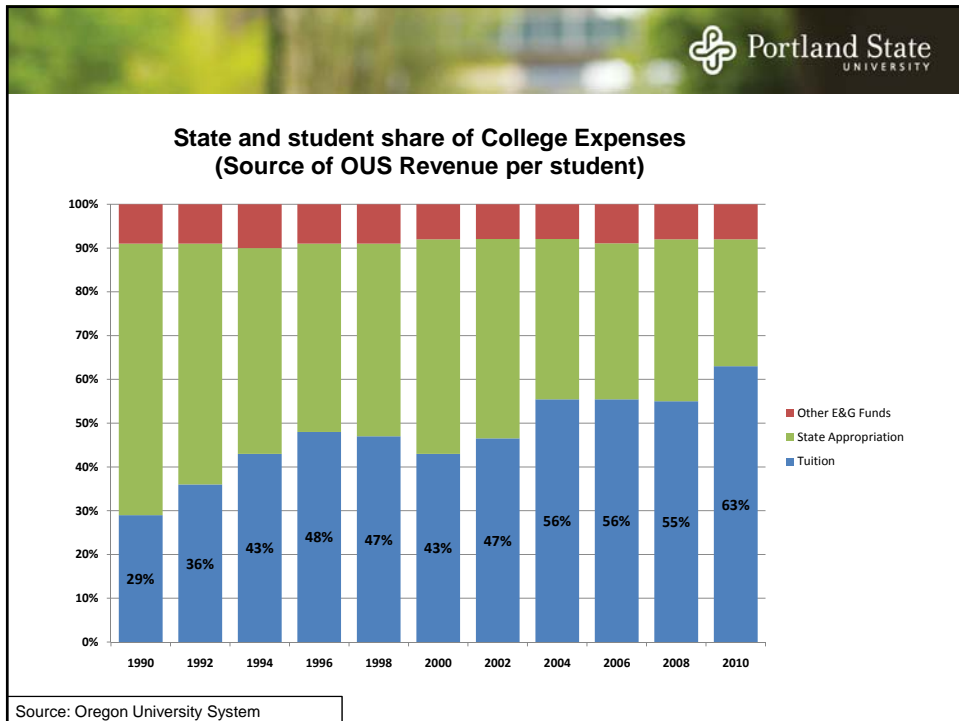
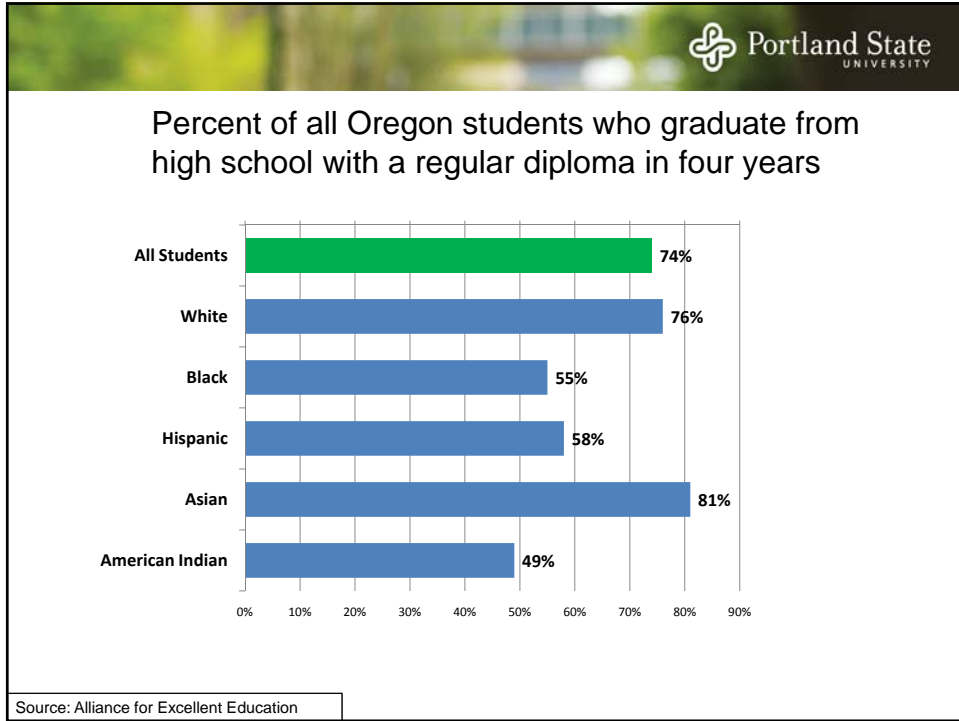
Some jobs are harder to fill

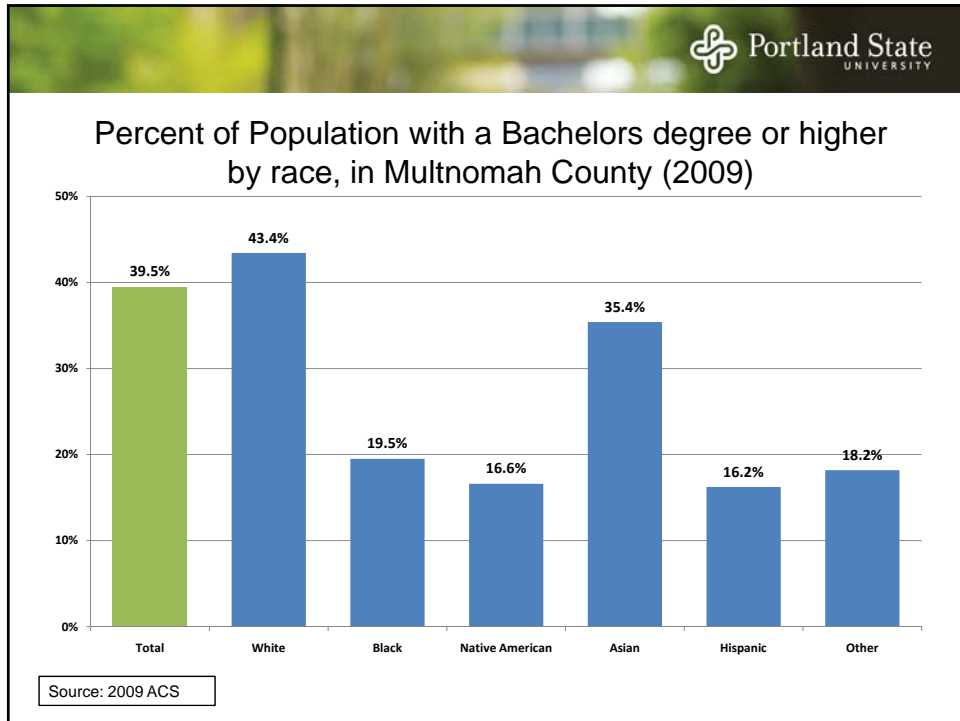
Top 20 Occupations With Vacancies Open 60+ Days
Oregon, Fall 2010

Occupation	Vacant 60+ Days
All Occupations	2,354
Registered Nurses	105
Postsecondary Teachers, Except Graduate Teaching Assistants	79
Mental Health Counselors	78
Advertising Sales Agents	61
Teacher Assistants	57
Coaches and Scouts	54
Automotive Service Technicians and Mechanics	51
Engineers, All Other	50
Accountants and Auditors	49
Electrical Engineers	49
Physical Therapists	47
Business Operations Specialists, All Other	42
Physicians and Surgeons	42
Occupational Therapists	39
Supervisors and Managers of Production and Operating Workers	35
Civil Engineers	35
Loan Officers	34
Industrial Engineers	34
Customer Service Representatives	33
Licensed Practical and Licensed Vocational Nurses	32









Demography as Destiny? Socioeconomic Trends in the Portland Metropolitan Region

Sheila A. Martin, Director
Jason R. Jurjevich, Assistant Director
Institute of Portland Metropolitan Studies (IMS)
Population Research Center (PRC)

Portland State UNIVERSITY