

MEMORY CARE IN OREGON

Designated for persons with a diagnosis of Alzheimer's disease or other dementia

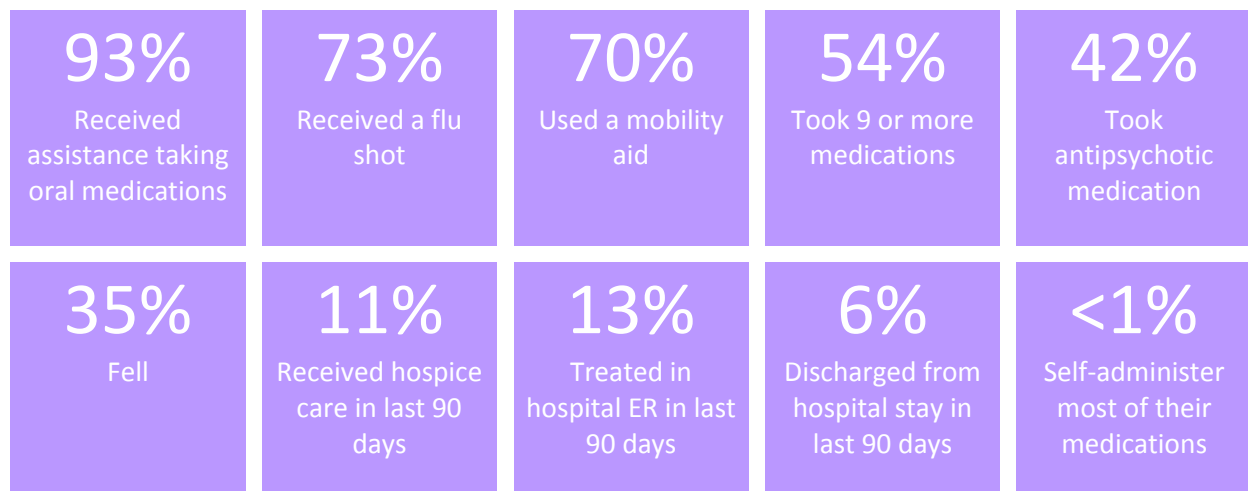
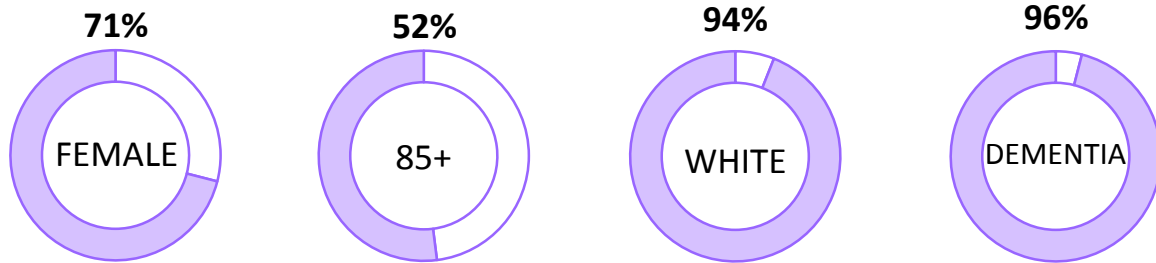
Have regulatory requirements for staffing, services, and building design features

160
Total Communities

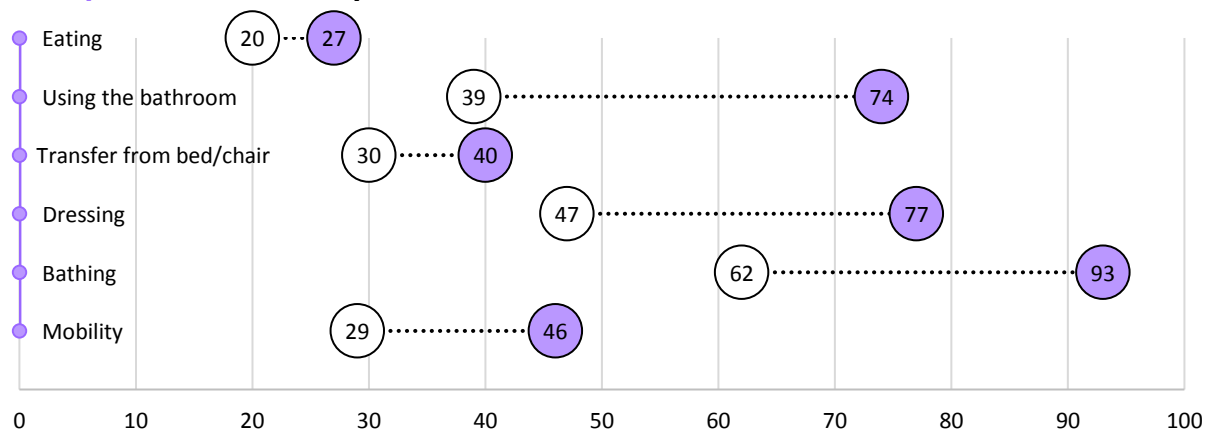
5,632
Licensed Capacity

52%
Increase in MC Settings Since 2008

RESIDENT DEMOGRAPHICS AND HEALTH CHARACTERISTICS



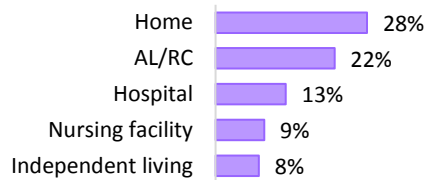
Percentage of Residents Who Need Assistance with Personal Care needs in **Memory Care** and **Nationally**ⁱ



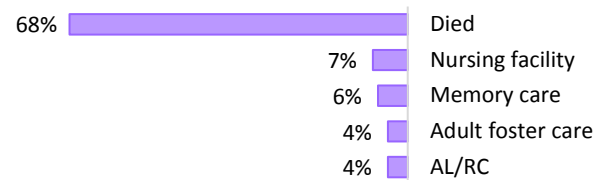
MEMORY CARE IN OREGON

RESIDENT MOVE-IN AND MOVE-OUT INFORMATION

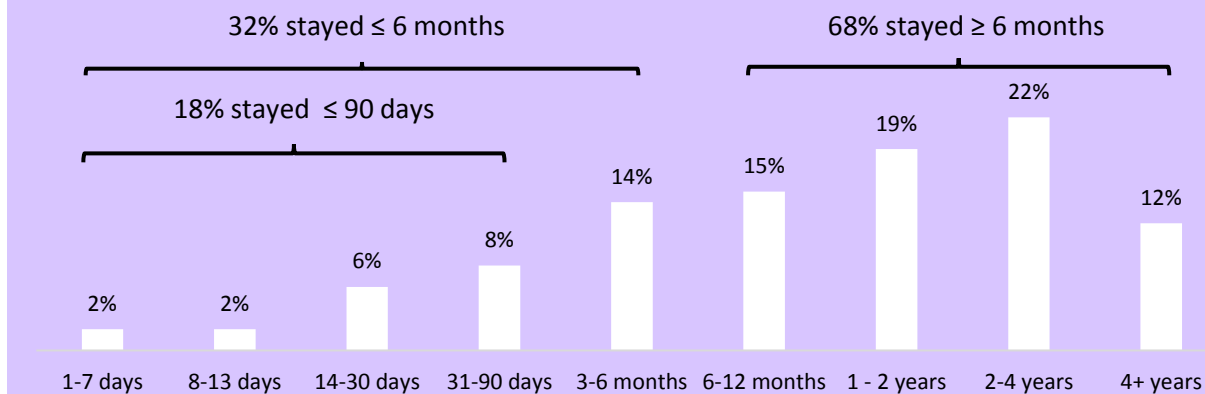
Move-In



Move-Out

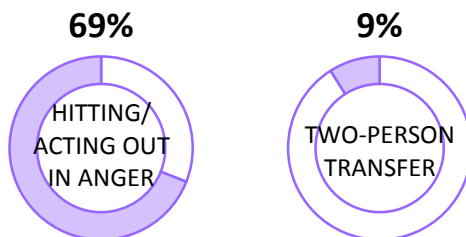


Length of Stay

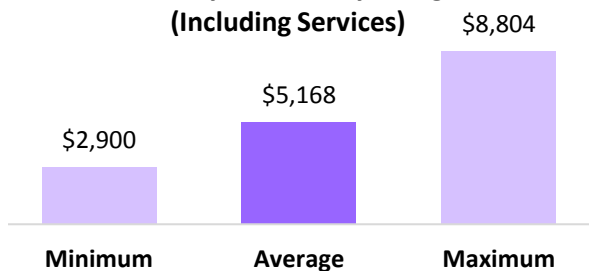


FACILITY CHARACTERISTICS

Two Most Common Move-Out Notices



Monthly Private-Pay Charge (Including Services)



1.18

Ratio of all employees to residents

58%

Facilities that had a full-time RN

29%

Employees who received a flu shot

10%

Direct care staff who were certified

3.26

Personal care staff hours per resident per day

Oregon DHS contracted Portland State University's Institute on Aging to conduct a survey of a statewide sample of adult foster homes in 2015. Results are based on provider responses to a self-administered questionnaire. A total of 316 adult foster homes with 1,218 residents responded for a 51% response rate. The full report is available at:

<https://www.pdx.edu/iaa/oregon-community-based-care-project> and <http://www.oregon.gov/DHS/SENIORS-DISABILITIES/Pages/publications.aspx>

July 21, 2016

ⁱ Harris-Kojetin L., Sengupta M., Park-Lee E., et al. Long-term care providers and services users in the United States: Data from the National Study of Long-Term Care Providers, 2013–2014. (2016). National Center for Health Statistics. Vital Health Stat 3(38).