

ADULT FOSTER HOMES IN OREGON

Single-family residences providing access to 24-hour care for 1-5 adults

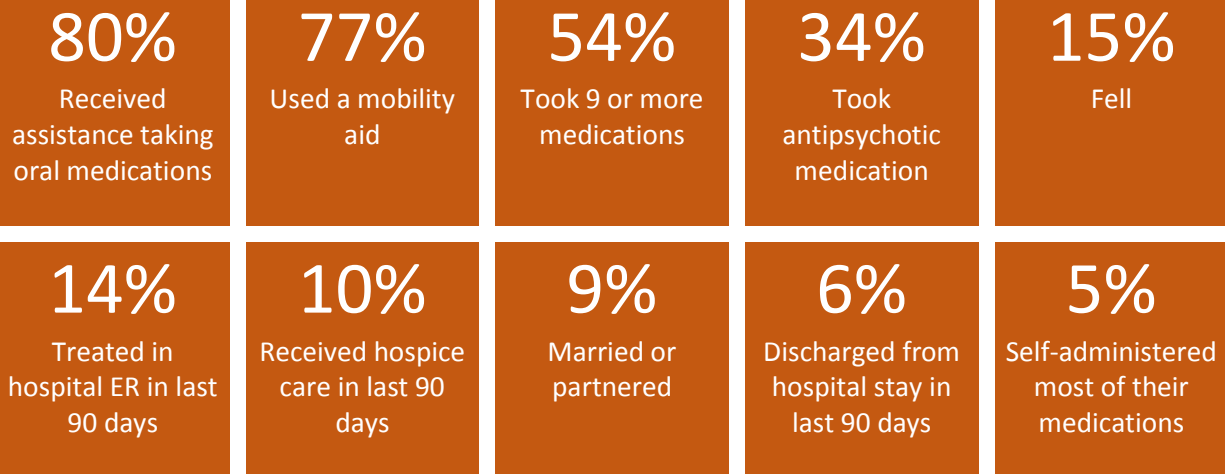
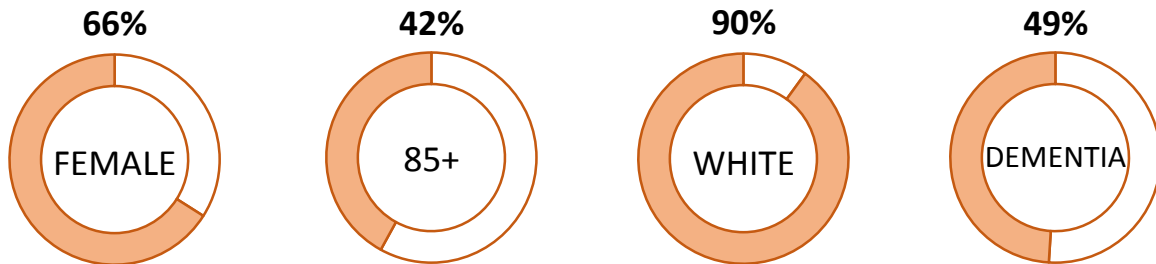
Provide daily meals, personal care, health monitoring, medication administration, and care coordination

1,692
Total Homes

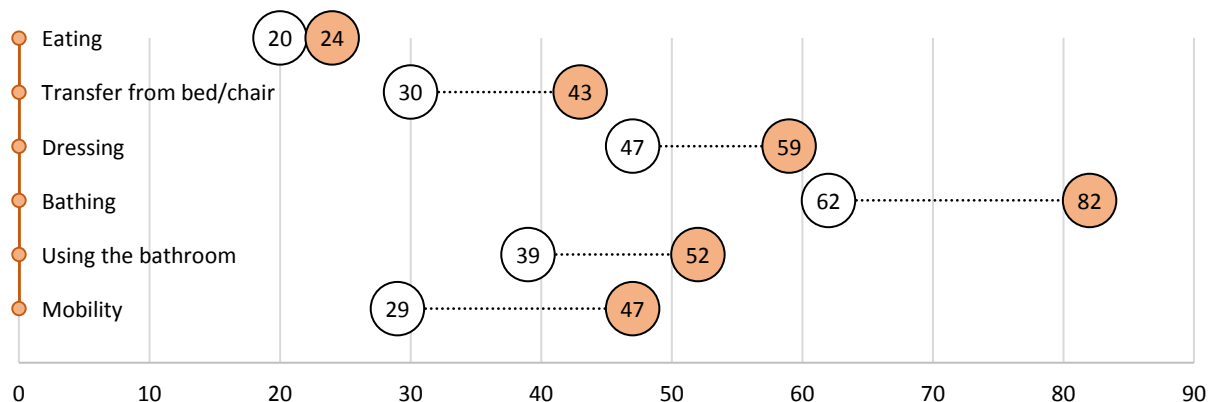
7,475
Licensed Capacity

60%
Homes at Full Capacity

RESIDENT DEMOGRAPHICS AND CHARACTERISTICS



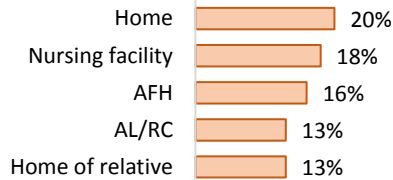
Percentage of Residents Who Need Assistance with ADLs in Adult Foster Homes and Nationallyⁱ



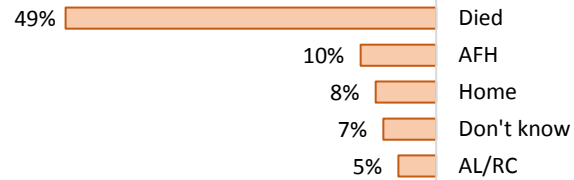
ADULT FOSTER HOMES IN OREGON

RESIDENT MOVE-IN AND MOVE-OUT INFORMATION

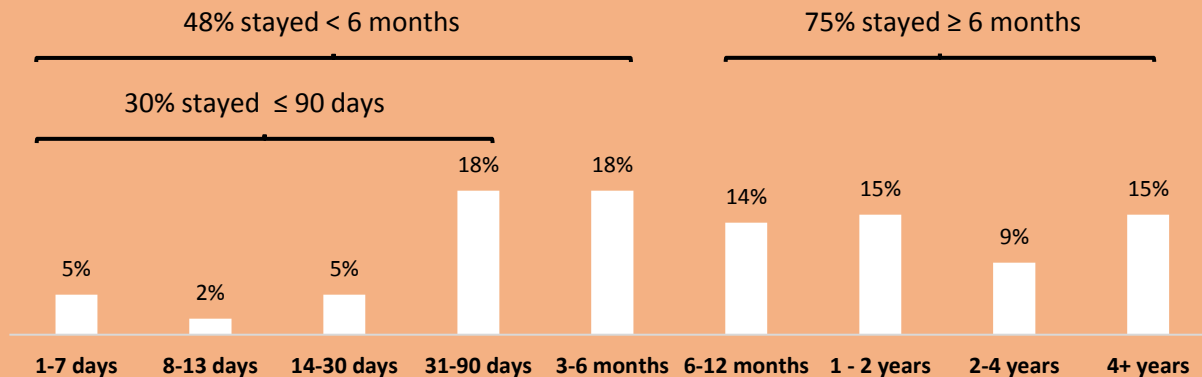
Move In



Move Out

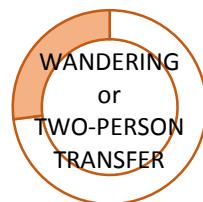


Length of Stay

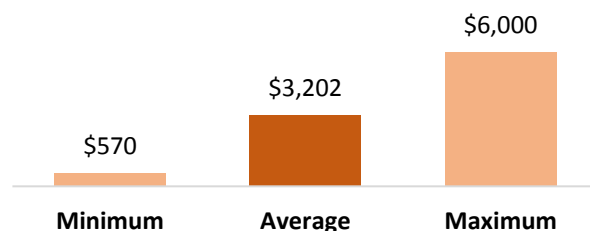


FACILITY CHARACTERISTICS

Two Most Common Move-Out Notices Given



Monthly Private-Pay Charge (Including Services)



85%

Providers who lived at their AFH

42%

Homes that employed at least one caregiver

24%

Homes that employed a resident manager

22%

Providers who were licensed as CNAs

17%

AFH owners who might sell/transfer AFH in the next 5 years

Oregon DHS contracted Portland State University's Institute on Aging to conduct a survey of a statewide sample of adult foster homes in 2015. Results are based on provider responses to a self-administered questionnaire. A total of 316 adult foster homes with 1,218 residents responded for a 51% response rate. The full report is available at:

<https://www.pdx.edu/ioa/oregon-community-based-care-project> and <http://www.oregon.gov/DHS/SENIORS-DISABILITIES/Pages/publications.aspx>.

July 21, 2016

ⁱ Rome V., & Harris-Kojetin L.D. Variation in residential care community nurse and aide staffing levels: United States, 2014. (2016). National health statistics reports; no 91. Hyattsville, MD: National Center for Health Statistics.