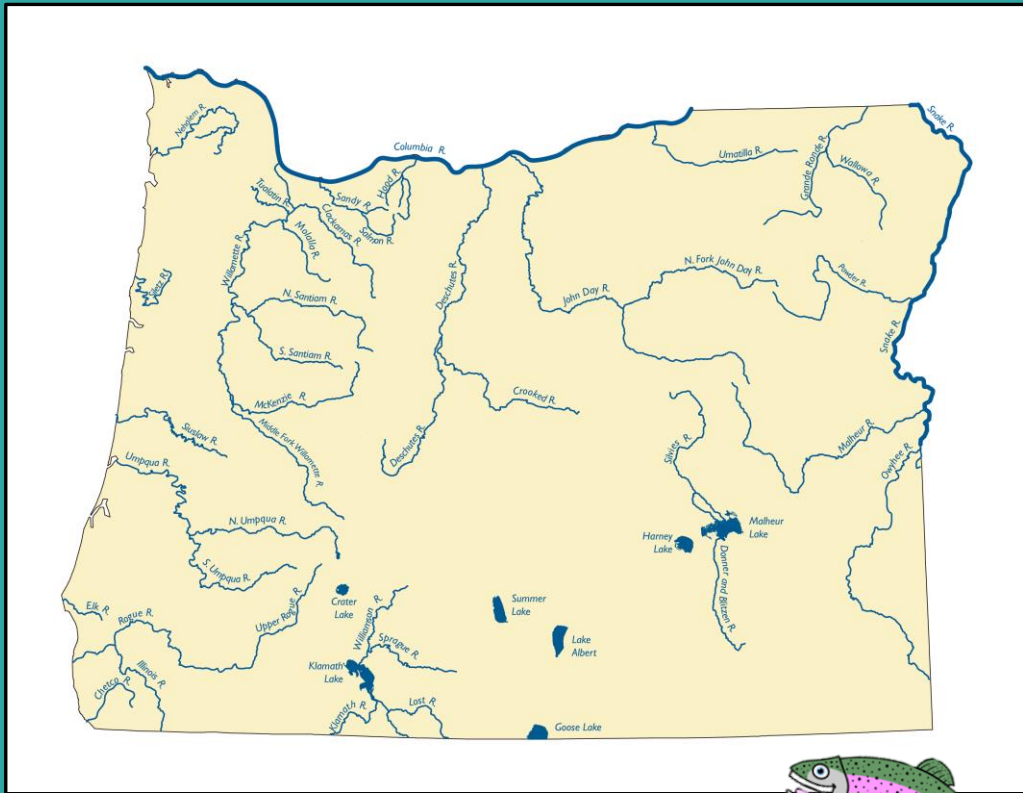


# Let's Learn <sup>teacher guide</sup> All About Geography!

Activity Workbook for Pre K – 3<sup>rd</sup> Grade

Inside you will find fun activities to help you learn about maps and geography. Keep an eye out for Sandy, the Chinook Salmon, for fun facts and helpful hints along the way!



2015

The Center for Geography Education in Oregon  
Portland State University  
PO Box 751 – GEOG  
Portland, Oregon, 97207

Website: <http://www.pdx.edu/geography-education/>  
Telephone Number: 503-725-5864

# All About Geography! teacher guide!

**Geography skills are an essential part of navigating and understanding today's world, and this workbook is meant to serve as an introduction to maps and geographic concepts for Pre K – third grade.**

**Pages 22-23 – National Geography Standards (NGS), the Oregon Geography Standards (OGS), and the Oregon Environmental Literacy Standards (OELS).**

Each of the activities in this book includes at least one of the following symbols—which serve as a guide to how the workbook activities connect to the state and national standards:



**National Geography Standards (NGS)**



**Oregon Geography Standards (OGS)**



**Oregon Environmental Literacy Standards (OELS)**

**Additional Resources: A red apple (  ) at the bottom of the page indicates additional activity resources for teachers, which are located on Page 24.**

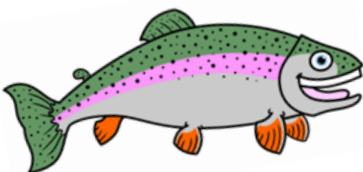
**We hope you find this workbook helpful in improving map and geographic literacy in the State of Oregon!**

# Table of Contents

What is Geography? . . . . .	Page 1
Important Geography Words . . . . .	Page 2
Geography Words Used In This Booklet . . . . .	Pages 3-4
Where do People Live? . . . . .	Page 5
Landmarks . . . . .	Page 6
Where in the World Am I? . . . . .	Page 7
Flags . . . . .	Page 8
Landforms . . . . .	Pages 9-10
Water, Water, Everywhere! . . . . .	Page 11
The World's Oceans . . . . .	Page 12
Weather . . . . .	Page 13
Compass Rose . . . . .	Page 14
Distance and Directions . . . . .	Pages 15-16
Reading a Map . . . . .	Page 17
Let's Go on a Scavenger Hunt! . . . . .	Page 18
Things to do Outside . . . . .	Page 19
What Places are Important to You? . . . . .	Page 20

## What is Geography?

**Geography is the study of the Earth and everything on it.** Some geographers study how nature affects where—and how—people live, while others study the environment, including things like earthquakes, volcanoes, and how the landscape was formed. Many geographers also create maps.



Hi kids, my name is Sandy!  
I'm a Chinook Salmon: the  
official Oregon state fish. I'll  
be your friendly guide  
throughout the activities in  
this book.

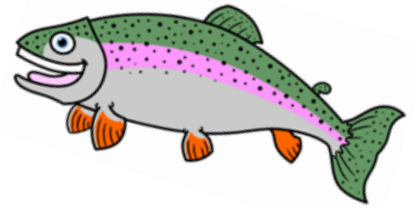
# Important Geography Words

**Globe:** A globe shows all of planet Earth in a round form

**Map:** A map is a flat drawing of a place

**Compass:** A compass shows direction – North (N), East (E), South (S), and West (W)

Fish don't need maps or compasses because we are born with an "internal compass" which helps us get where we need to go. Pretty cool, huh?



Can you match the vocabulary word to the correct image?



globe



compass



map



# Geography Words Used in this Booklet I

**Landform:** Landforms are natural structures, such as mountains, hills, rivers, and canyons.

**Landmark:** A landmark is an easily recognizable object that helps you to locate a specific place. Landmarks can be many things: a big tree, your favorite restaurant, or your school.

**Weather:** Weather describes what is happening in the sky above us. Rain, sun, snow, and wind are all examples of weather. Some places on Earth see lots of changes in weather throughout the year, while others have fairly constant weather conditions year-round.

**Climate:** Climate describes the typical (or normal) temperature and weather conditions at a certain place throughout the year—for example, cold in summer, or wet in winter.

**Direction:** Direction indicates where something is located. “Left”, “right”, “up”, “down”, “in front of”, and “behind” are all direction words you’re probably familiar with. A compass uses “North”, “East”, “South”, and “West” to show direction.

**Scale:** Scale describes the size of things compared to one another. For example, a mountain is big and an ant hill is small, but they are both kinds of hills.

**Flag:** Flags are symbols of places, ideas, and organizations. Each country in the world (and each state in the United States of America) has a flag that is unique to it. The American flag is red, white, and blue.



You should refer back to these vocabulary words while you're completing the activities in this book.



Flag of the United States of America

# Geography Words Used in this Booklet II

**Water Body:** A water body is any place that has water. Oceans, lakes, ponds, rivers, streams, creeks, marshes, lagoons, and swamps are all considered water bodies.

**Ocean:** Oceans are big bodies of salt water that cover over 70% of our Earth. There are five different oceans on Earth; the ocean off the Oregon coast is called the Pacific Ocean.

**Lake:** Lakes are salty or fresh bodies of water that are surrounded by land. Crater Lake in central Oregon is an example.

**Pond:** Ponds are also bodies of water surrounded by land, but they are not as deep or as big as lakes. You might have one in your backyard or neighborhood.

**River:** Rivers are flowing bodies of water that usually run or flow into oceans or lakes. The Columbia River separates Oregon and Washington and runs into the Pacific Ocean.



Let's try filling in the blank spaces in this sentence with the following new vocabulary words: compass, water body, direction, ocean, weather.

"The other day I went to the ocean/lake/river/pond. It was a huge water body. The weather was very nice and sunny, a perfect day for a picnic. After lunch I went on a hike. Thank goodness I had my compass/map with me, or I wouldn't have known which direction to go in!"

# Where do People Live?

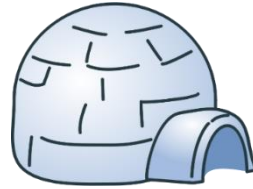
People live in all kinds of places. Some of these homes you might see in a city, others you might find in the countryside, on a mountain, or on the water. **Circle the one that looks the most like your home. Where might you find some of the other homes?**



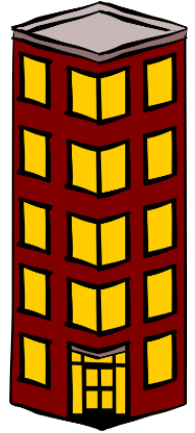
Log Cabin



House



Igloo



Apartment Building



Bus



House



Tree House



Castle

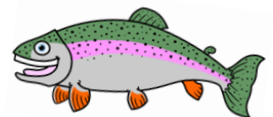


House Boat



Tee-Pee

If you could live in any of these homes, which would you pick? Draw a square around it!

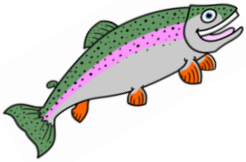


# Landmarks

A landmark is an easily recognizable object that helps you to locate a specific place. Let's take a look at some different kinds of landmarks. Examples of landmarks include barns, streetlights, and schools.



Some landmarks are very famous and can be recognized worldwide, like the Eiffel Tower in Paris, and the Seattle Space Needle. Other landmarks are things that might just be familiar to you or people in your neighborhood – like a big tree, or your favorite park.



Eiffel Tower



Space Needle

What kind of landmarks are near your home? Draw two here!

Various answers possible



# Where in the World Am I?

**Scale** is used to describe the size of things compared to one another. Where you live can be compared to many different scales.



**HOUSE/HOME**



**NEIGHBORHOOD or TOWN**



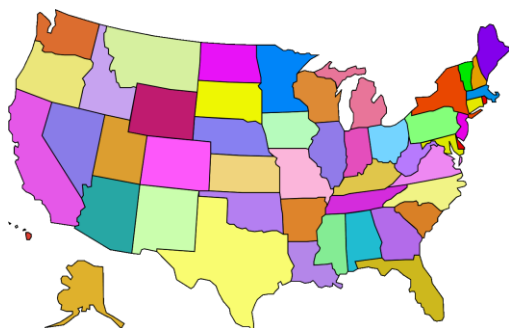
**CITY or METRO AREA**



**OREGON**



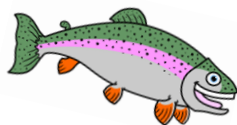
**STATE**



**COUNTRY**



**WORLD**



What is the name of your neighborhood or town? What is the closest city to you? What state is it in? What country is it in? \_\_\_\_\_

*Various answers possible*

# Flags

Flags are used as symbols for different countries and states, and usually have some significance for the places they represent. The United States of America has a flag with 50 stars; each star represents one of the 50 states. The 13 red and white stripes represent the original 13 colonies, which eventually became the first states in America.

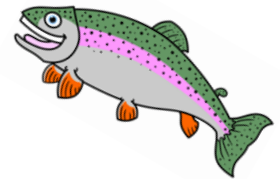
## State Flag of Oregon



## United States



Fun fact! Oregon is the only state in the USA that has an emblem on both sides of the state flag. The state seal and the year that Oregon became a state are on the front, and a beaver (the official state animal) is on the back.



## Now, let's design our own flags.

What colors or symbols are important to you? Think of using things on your flag that represent who you are and where you live.

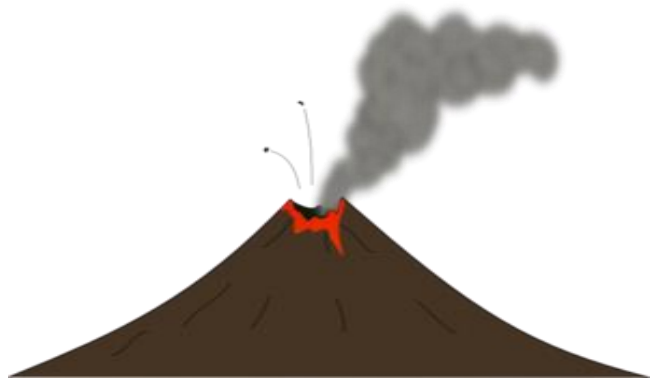
Various answers possible

# Landforms

Let's match the images of *landforms* to their definitions on the next page. If you're having trouble remembering what a landform is, check Page 3 for a hint.



**DESERT**



**VOLCANO**



**MOUNTAIN**



**FOREST**



**ISLAND**



**BEACH**

# Landforms Activity

## Description 1

I am a type of mountain. I am filled with hot red lava. Sometimes smoke comes out of my top, and occasionally I erupt.

I \_\_\_\_\_ am **volcano** a \_\_\_\_\_.

## Description 2

I go way up into the sky from the ground. My top is often covered with snow, and people like to ski or snowboard down me.

I am a **mountain** \_\_\_\_\_.

## Description 3

I am known for having many trees that grow close together. I can be evergreen or tropical, and many people like to use me for fun activities like camping, bird watching, and hiking.

I am a **forest** \_\_\_\_\_.

## Description 4

Water meets land here. I am covered in sand, and I can be a great place to look for seashells. You can also visit me to dip your toes into the water.

I am a **beach** \_\_\_\_\_.

## Description 5

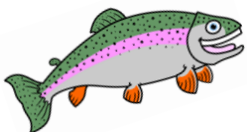
I am very hot and dry, with lots of rocks, sand, and spiky plants called cacti. I don't get very much rain.

I \_\_\_\_\_ **desert** am \_\_\_\_\_ a \_\_\_\_\_.

## Description 6

I have water surrounding me on all sides. I am often tropical. I can be big like Australia, or small like Hawaii. I make a great vacation spot.

I am an **island** \_\_\_\_\_.



I like the beach, but a volcano might be a little too hot for me! Which of these places would you most like to explore?

**Various answers possible**



NGS: 4, 8



OGS: 3



OELS: 2



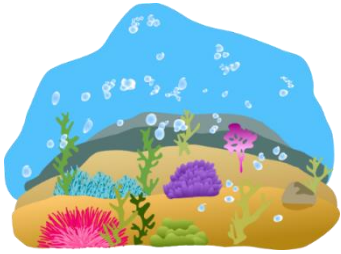
TR: 4-5 - Characteristics of Place

# Water, Water, Everywhere!

Where might a frog live? Probably near a lake or a pond. What animals share the same bodies of water? **Draw a line matching the water creature to the body of water where it might live.** Hint: some creatures might live in more than one kind of water body.



Lake



Ocean



Pond



River

Dolphin



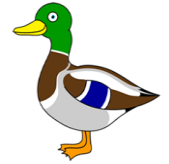
Sea Star



Lobster



Duck



Frog



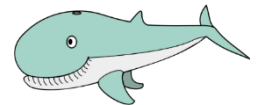
Jelly Fish



Beaver



Whale



Crab



Tropical Fish



Salamander



NGS: 4, 8



OGS: 3



OELS: 2



TR: 6 – Land, Water, and Animals Map

# The World's Oceans

Oceans are home to millions of different plants and animals. Unfortunately, trash and other waste is often dumped into the ocean, which can pollute the water and hurt the plants and animals that live there. **Help make the ocean clean for Sandy and the other sea creatures. Circle all the trash you see.**

Remember to recycle your plastic, paper, and metals, these can be reused and won't end up in the oceans. Try to use reusable water bottles and other non-disposable items, too.

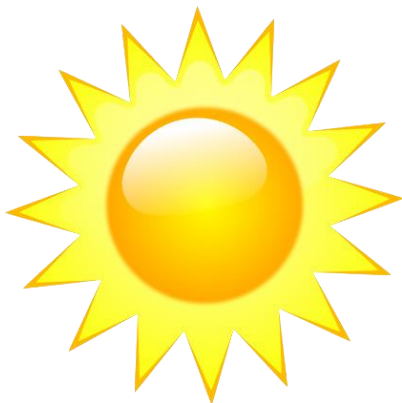
Help! There's too much trash in here!



# Weather

In Oregon, some days the *weather* is hot, some days it is cold, and some days it is wet. **Circle the word which best matches the kind of weather described below.**

## SUN



When the sun is in the sky is it WARM or COLD?

## RAIN



When there is rain coming from the clouds is it usually WET or DRY outside?

## CLOUDS



When there are lots of clouds can you see the blue sky? YES or NO?

## SNOW

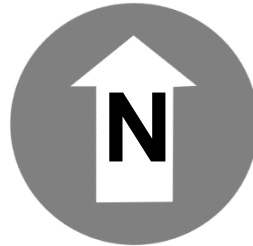
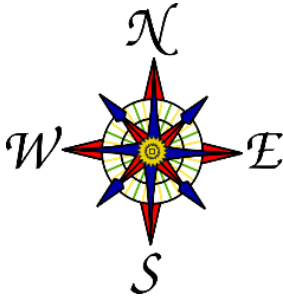


When there is snow coming from the clouds is it usually COLD or WARM outside?

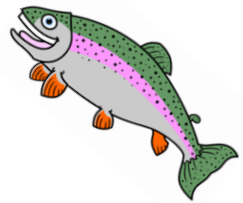


# Compass Rose

One way to show direction is with a *Compass*. On a compass, there are four main directions that we use: **North**, **East**, **South**, and **West**. A compass with drawings in the center is called a compass rose.



To the left are two examples of different compasses. Use the outline below to color in a special compass rose of your own.



North



West



East



South

Various answers possible



NGS: I



OGS: I



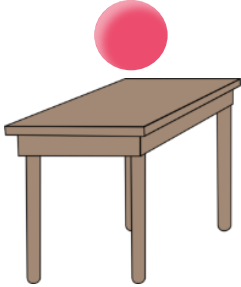
TR: 11-13 – Cardinal Directions and Maps



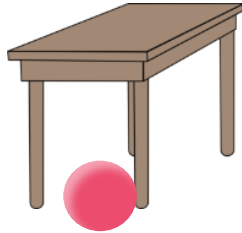
# Distance and Directions

We use *directions* to describe where things are in relation to each other, and we use *distance* to describe how far things are from each other. Below, the ball is moving around the table, and the word tells you where it is in relation to the table.

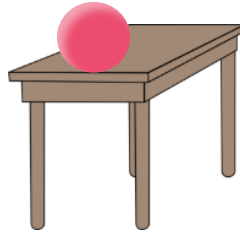
**Above**



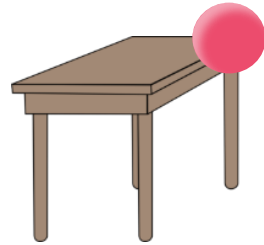
**Below**



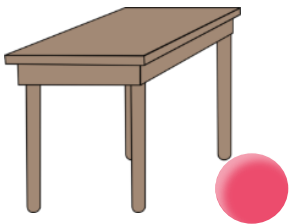
**In Front of**



**Behind**



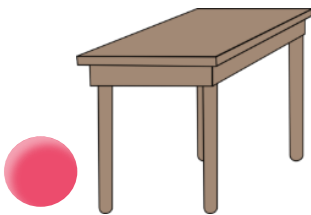
**Near**



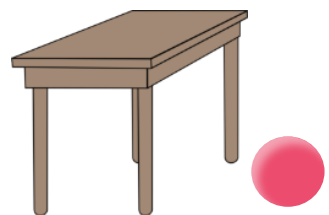
**Far**



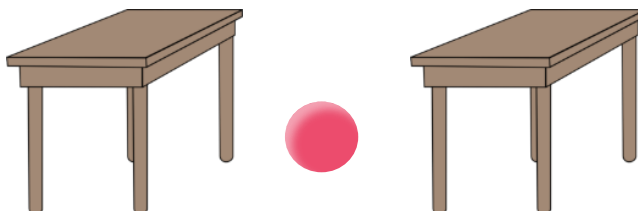
**To The Left of**



**To The Right of**

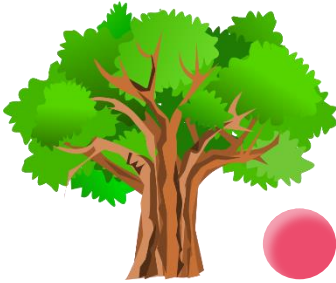


**Between**

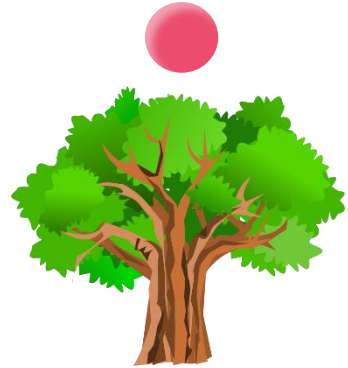


# Distance and Directions Activity

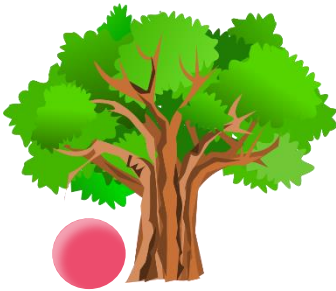
Circle or fill in the correct answers below.



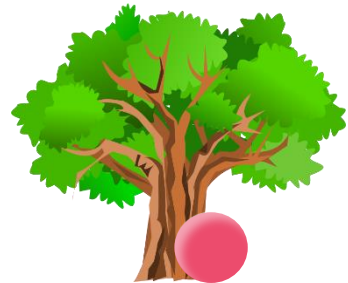
Is the ball on the LEFT or the RIGHT of the tree?



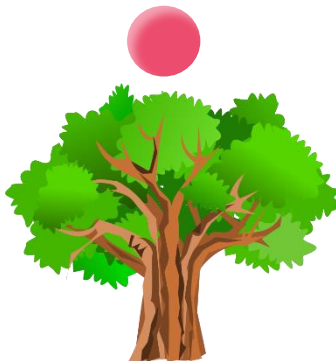
Is the ball ABOVE or BELOW the tree?



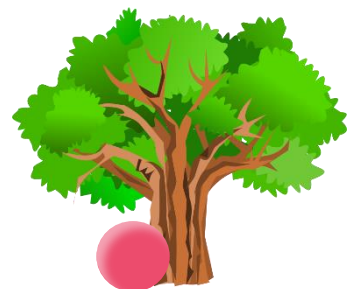
Is the ball NEAR or FAR from the tree?



Is the ball in the FRONT or the BACK of the tree?



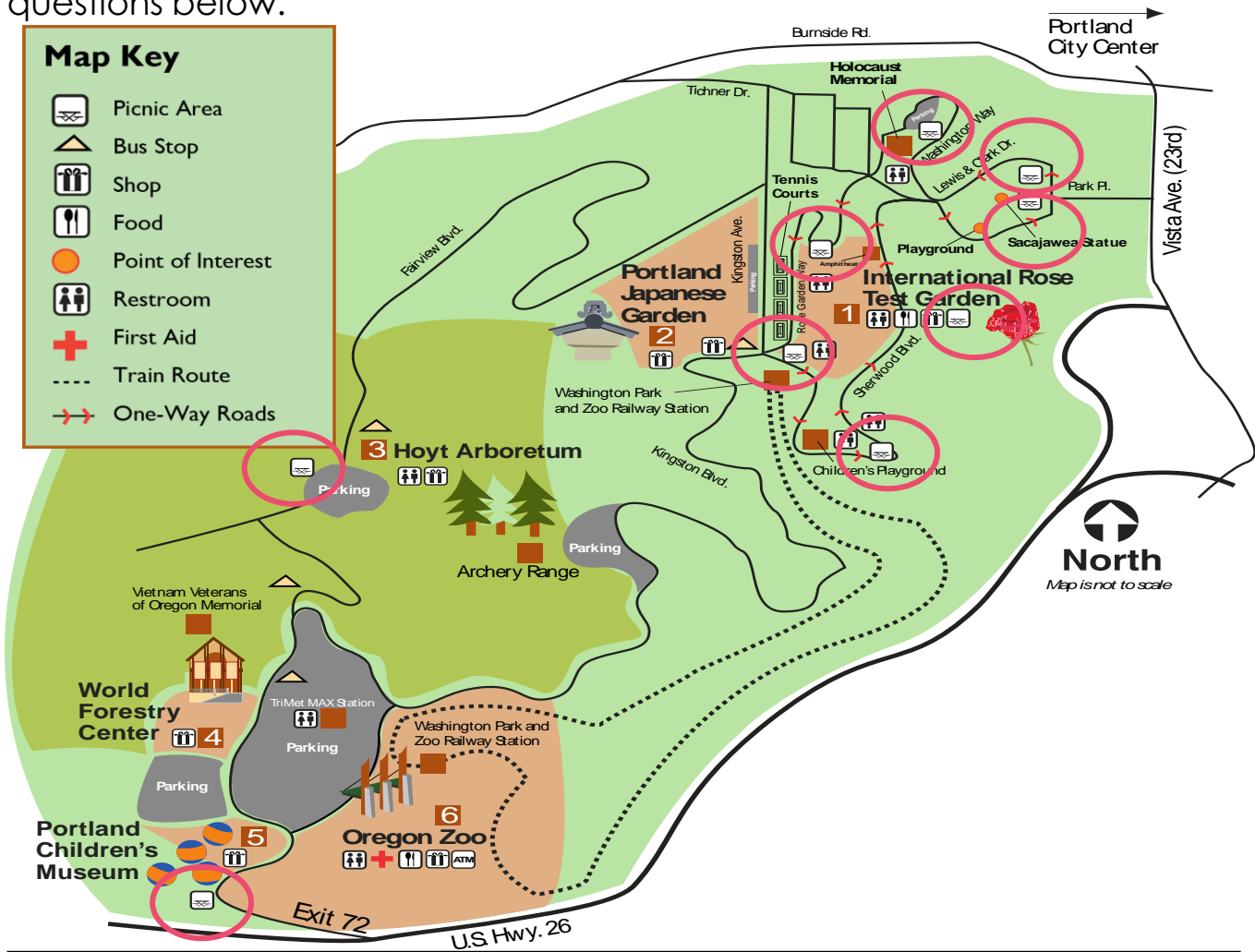
The ball is positioned above the tree.



The ball is positioned near/to the left of the tree.

# Reading a Map

This map of Washington Park in Portland shows you where all the parks attractions are located. The *map key* shows you what the different symbols on a map represent. Use the map and its key to answer the questions below.



1. There are lots of different things to do in Washington Park. What would you want to see first? What other attractions is it located near? **Various answers possible**

2. If you get hungry, where is a place where you can get food? What is its symbol? What is it next to? **You can get food at the Oregon Zoo or the International Rose Test garden. Symbol is a knife and fork. These locations are next to various things.**

3. On the map, trace the route you would take from the Portland Children's Museum to the Sacajawea Statue. Make sure to follow existing roads and trails. **Various answers possible**

4. Circle all the places on the map where you see a picnic area.

# Let's Go on a Scavenger Hunt!

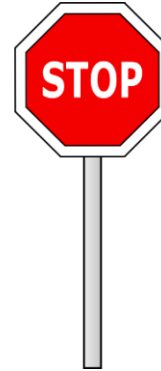
Next time you are on a walk or in a car, bus, or train, look at your surroundings to see what is there. What do you usually see on your way to school?



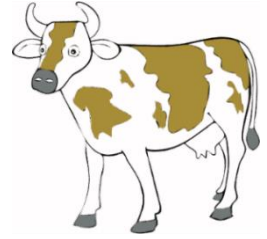
Clouds



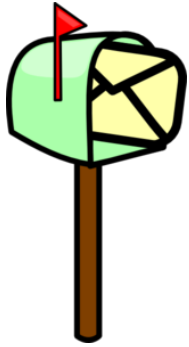
Bicycles



Road Signs



Farm Animals



Mail Boxes



Dogs



Runners



Road Construction



Tractors

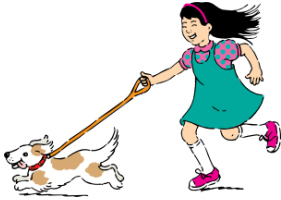
When I'm traveling around, I usually see lots of other fish friends and big rocks on the river bottom. I'm always looking for tasty bugs to snack on, too!



Various answers possible

# Things to do Outside

Being outside lets you explore the environment, and exploring the environment makes you a geographer! There are many fun activities you can do outdoors year-round. A few are listed below.



**Walking**



**Roller Blading**



**Skiing**



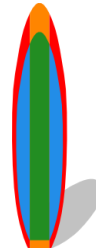
**Hiking**



**Sailing**



**Horseback Riding**



**Surfing**

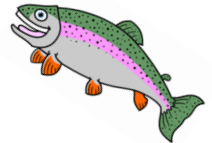


**Camping**



**Swimming**

When you're outside remember to be sun safe. Always wear sunscreen and try to stay in the shade. You don't want to burn your scales (or your skin!)



**What do you like to do outside? Write it down and then draw it here.**

I like to \_\_\_\_\_ outside!

**Various answers possible**

# What Places Are Important to You?

Now that you know more about geography, use what you have learned to draw a map in the box below of a place that is important to you. Examples could include your house, neighborhood, school, or favorite vacation spot. Make sure to include a *map key*.

Various answers possible

I would map my home: the Columbia River!



# Image Sources

The images in this workbook come from the sources listed below. Any images not listed come from the Center for Geography Education in Oregon's *Student Atlas of Oregon (second edition)*\*.

<u>PAGE</u>	<u>PHOTO</u>	<u>SOURCE</u>
Cover	Fish (Sandy)	Picture Spider
Page 2	Globe	Open Clipart
	Compass	Clkr
	Map	Clkr
Page 3	American Flag	Clkr
Page 5	Teepee, Castle	Clkr
	Igloo, 3 Story House, Yellow House	Open Clipart
	Apartment Building, Snow Background	Open Clipart
	Meadow, City, Log Cabin	Open Clipart
	Bus	Clkr
Page 6	Barn, Stop Light, Space Needle	Open Clipart
	School	Open Clipart
	Tree	Open Clipart
	Eiffel Tower	Clkr
Page 7	House	Open Clipart
	Neighborhood	Sweet Clipart
	City	Open Clipart
	State	Clkr
	U.S.A.	Open clipart
	Globe	Clkr
Page 8	American Flag	Clkr
	Oregon State Flag	Wikimedia Commons
	Oregon State Flag (back)	Wikimedia Commons
Page 9	Desert	Freetems
	Volcano, Mountain, Beach	Clkr
	Forest	Open Clipart
	Island	Open Clipart
Page 11	Lake, Ocean, Pond, River	Clkr
	Dolphin, Sea Star, Lobster	Clkr
	Duck	Clkr
	Frog, Jelly Fish, Beaver, Whale	Clkr
	Crab, Tropical Fish, Salamander	Clkr
Page 12	Ocean Background, Can	Clkr
	Crumpled Paper	Clkr
	Apple Core, Plastic Water Bottle	Open Clipart
	Plastic Water Bottle (Red Cap)	Open Clipart
	Octopus	Open Clipart
	Whale, Turtle, Broken Bottle	Clkr
	Tropical Fish, Pair of Bottles	Clkr
	Banana Peel	Clkr
Page 13	Sun, Rain, Clouds, Snow	Clkr
Page 14	North Arrow	PD Clip Art
	Compass Rose	Clkr
Page 15	Table	Clkr
Page 16	Tree	Open Clipart
Page 17	Washington Park Map	Portland Department of Parks and Recreation
Page 18	Clouds, Mailbox, Road Sign	Clkr
	Dog, Tractor, Runner	Open Clipart
	Bike, Stop Sign, Cow	Open Clipart
Page 19	Dog Walker, Skier, Sail Boat	Clkr
	Roller Blader, Horseback Rider	Clkr
	Hiker, Tent, Surf Board	Open Clipart
	Swimmer	Clip Art Best

\*A free copy of the Atlas can be obtained from <http://studentatlasoforegon.pdx.edu/>.



## National Geography Standards (NGS)

### **Essential Element: The World in Spatial Terms**

1. How to use maps and other geographic representations, geospatial technologies, and spatial thinking to understand and communicate information
2. How to use mental maps to organize information about people, places, and environments in a spatial context
3. How to analyze the spatial organization of people, places, and environments on Earth's surface

### **Essential Element: Places and Regions**

4. The physical and human characteristics of places
5. That people create regions to interpret Earth's complexity
6. How culture and experience influence people's perceptions of places and regions

### **Essential Element: Physical Systems**

7. The physical processes that shape the patterns of Earth's surface
8. The characteristics and spatial distribution of ecosystems and biomes on Earth's surface

### **Essential Element: Human Systems**

9. The characteristics, distribution, and migration of human populations on Earth's surface
10. The characteristics, distribution, and complexity of Earth's cultural mosaics
11. The patterns and networks of economic interdependence on Earth's surface
12. The processes, patterns, and functions of human settlement
13. How the forces of cooperation and conflict among people influence the division and control of Earth's surface

### **Essential Element: Environment and Society**

14. How human actions modify the physical environment
15. How physical systems affect human systems
16. The changes that occur in the meaning, use, distribution, and importance of resources

### **Essential Element: The Uses of Geography**

17. How to apply geography to interpret the past
18. How to apply geography to interpret the present and plan for the future





## Oregon Geography Standards (OGS)

1. Apply geographic skills, concepts, and technologies (e.g. maps, GIS, Google Earth) to gather, display, and analyze spatial information.
2. Analyze economic, social, human migration, settlement, and distribution patterns.
3. Locate and examine physical and human characteristics of places and regions, their impact on developing societies, and their connections and interdependence.
4. Evaluate how human cooperation and competition for resources shape the Earth's political, economic, physical, and social environments.
5. Evaluate how technological developments, societal decisions, and personal decisions and actions influence Earth's sustainability.

**For geography standards by grade, please see:**

<http://www.ode.state.or.us/teachlearn/subjects/socialscience/standards/adoptedsocialsciencesstandards8-2011.pdf>



## Oregon Environmental Literacy Strands (OELS)

### 1. Systems Thinking

Students study systems and issues holistically, striving to understand the relationships and interactions between each system's parts. They use the knowledge gained to assess the effects of human choices on economic, ecological, and social systems, and to optimize outcomes for all three systems.

### 2. Physical, living, and human systems

Students understand the characteristics of Earth's physical, living, and human systems.

### 3. Interconnectedness of people and the environment

Students understand the interdependence of humans and the environment, and appreciate the interconnectedness of environmental quality and human well-being.

### 4. Personal and civic responsibility

Students understand the rights, roles, and responsibilities and actions associated with leading or participating in the creation of healthy environments and sustainable communities.

### 5. Investigate, plan, and create a sustainable future

Students apply civic action skills that are essential to healthy, sustainable environments



## Teacher Resources (TR)

1. Locate Yourself:  
<http://education.nationalgeographic.com/activity/locate-yourself-map-americas/>
2. Mapping Storybooks:  
<http://education.nationalgeographic.com/activity/mapping-storybooks/>
3. Introduction to Place:  
<http://education.nationalgeographic.com/activity/introduction-to-place/>
4. Characteristics of Place:  
<http://education.nationalgeographic.com/activity/characteristics-of-place/>
5. Exploring Characteristics of Places:  
<http://education.nationalgeographic.com/activity/exploring-characteristics-places/>
6. Land, Water, and Animals Map:  
<http://education.nationalgeographic.com/activity/land-water-and-animals-map/>
7. How People Affect Ocean Animals and Plants:  
<http://education.nationalgeographic.com/activity/how-people-affect-ocean-animals-and-plants/>
8. Healthy Beaches:  
<http://education.nationalgeographic.com/activity/healthy-beaches/>
9. Create a Weather Map:  
<http://education.nationalgeographic.com/activity/create-weather-map/>
10. Measuring Distances:  
<http://education.nationalgeographic.com/activity/measuring-distances-map/>
11. Cardinal Directions and Maps:  
<http://education.nationalgeographic.com/activity/cardinal-directions-and-maps/>
12. Sun, Earth, and Cardinal Directions:  
<http://education.nationalgeographic.com/activity/sun-earth-and-cardinal-directions/>
13. Using the Language of Location:  
<http://education.nationalgeographic.com/activity/using-the-language-of-location/>
14. Using a Grid Map of the Zoo:  
<http://education.nationalgeographic.com/activity/using-grid-zoo-map/>
15. Places in the Park:  
<http://education.nationalgeographic.com/activity/places-park/>

# Produced by the Center for Geography Education in Oregon (C-GEO)

**Principal Contributors: Teresa Bulman, Morgan Josef, and Gwyneth Manser**

C-GEO is dedicated to the improvement of geographic education and awareness in the State of Oregon. C-GEO's mission includes: increasing public awareness of the importance of geographic education, increasing emphasis on geography in grades pre-K through 12, and improving geographic teaching methods and materials.

**Authorized use:** Teachers and students may copy any part of this workbook for classroom use or school projects. Any commercial use or unauthorized reproduction or distribution in any form or by any means, electronic or mechanical (including photocopying, recording, or digital storage/retrieval systems) is prohibited without written permission from the Center for Geography Education in Oregon.

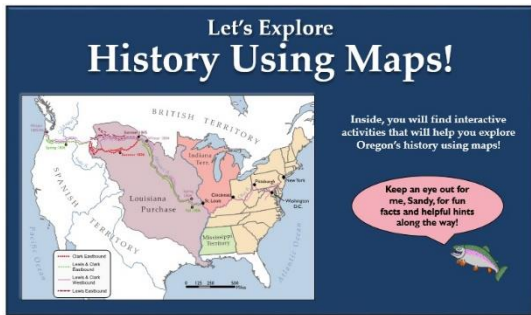


The Center for Geography Education in Oregon  
Portland State University  
PO Box 751 – GEOG  
Portland, Oregon, 97207

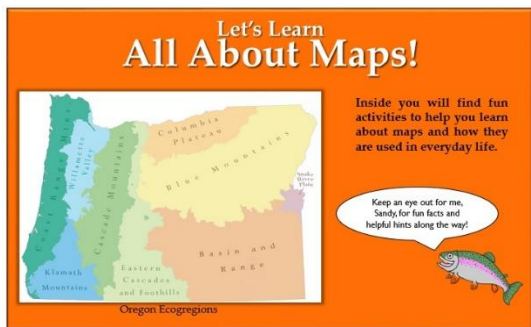
**Website:** <http://www.pdx.edu/geography-education/>  
**Telephone Number:** 503-725-5864

# Free digital copies of these booklets can be found at:

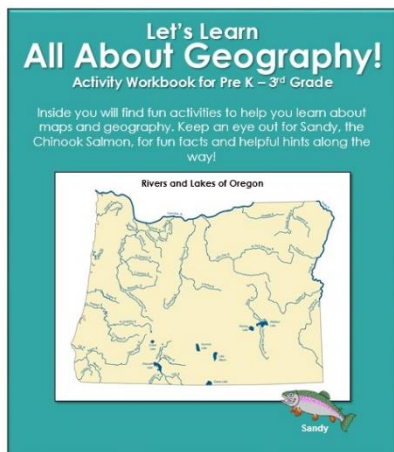
<http://www.pax.edu/geography-education/instructional-materials-0>



- Let's Explore History Using Maps!  
Student/Teacher Editions



- Let's Learn All About Maps!  
Student/Teacher Editions



- Let's Learn All About Geography! (Pre-K-3<sup>rd</sup>)  
Student/Teacher Editions

