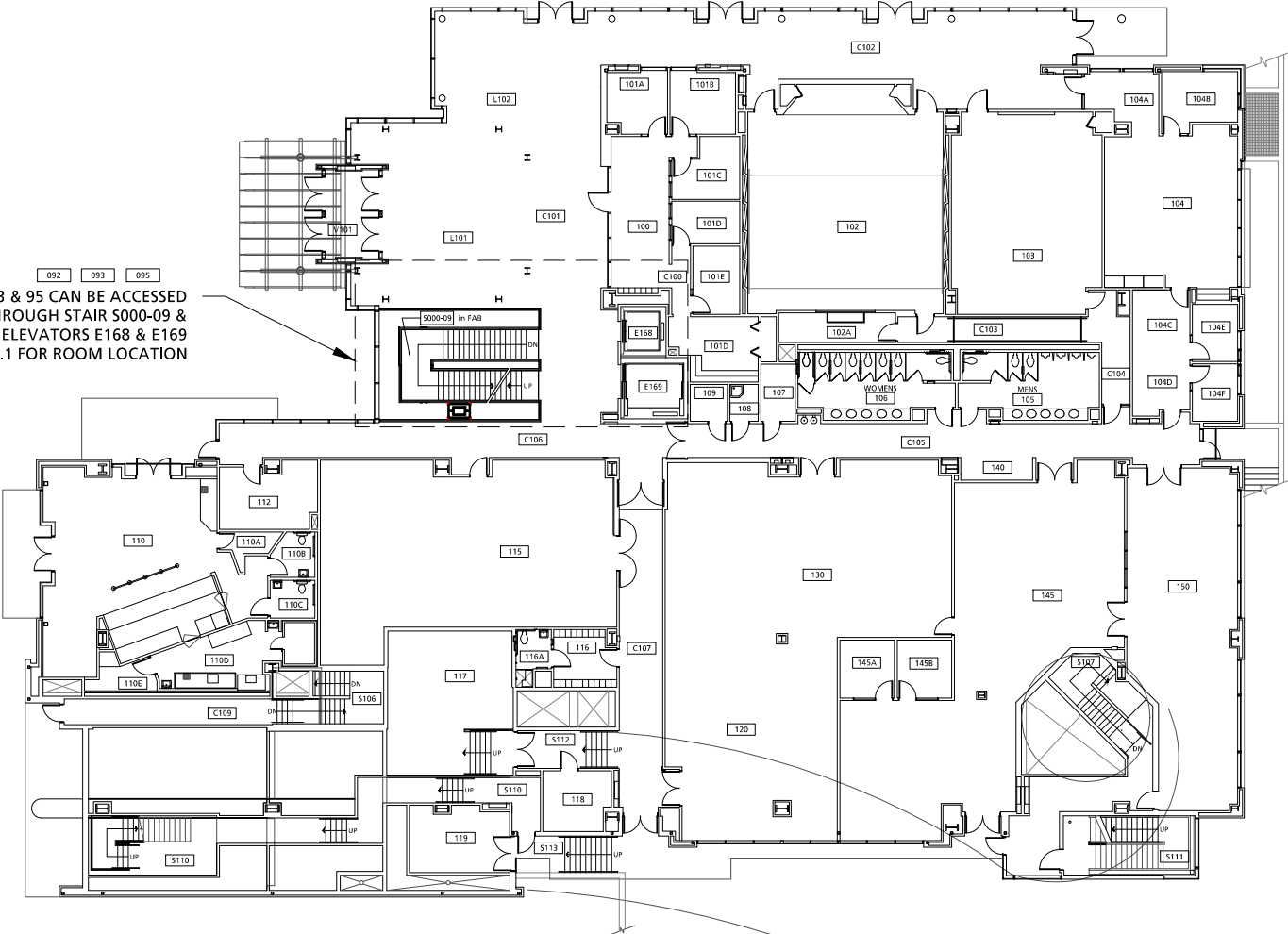


DRAWN BY:  
HH

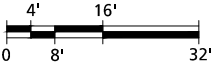
DATE:  
07/2018

FIRST FLOOR PLAN  
ENGINEERING BUILDING  
1930 S.W. FOURTH

ROOM 92, 93 & 95 CAN BE ACCESSED  
THROUGH STAIR S000-09 &  
ELEVATORS E168 & E169  
SEE SHEET A1.1 FOR ROOM LOCATION



FIRST FLOOR PLAN

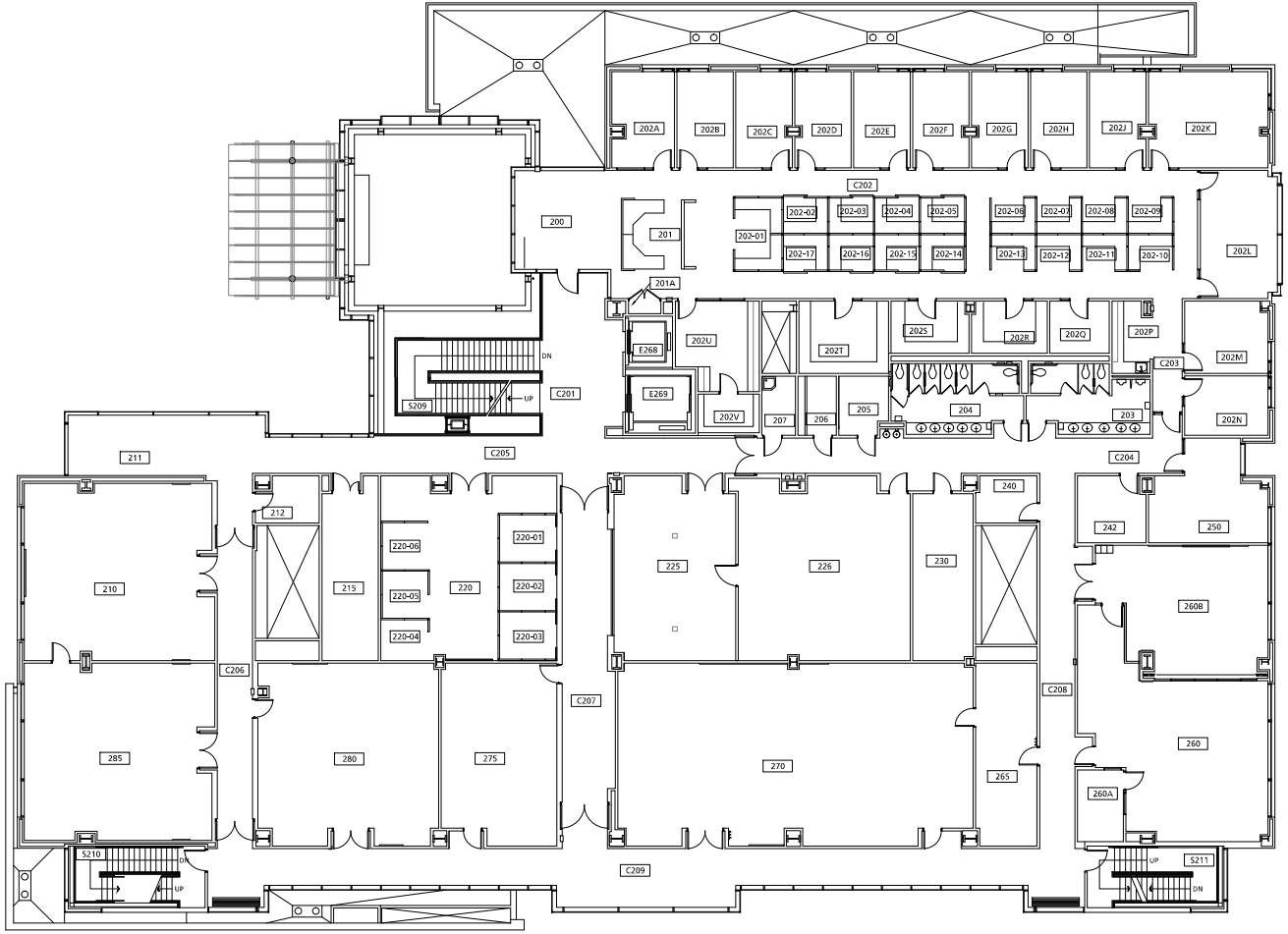


091\_A2

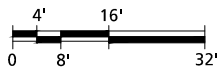
DRAWN BY:  
RCB

DATE:  
4/2016

SECOND FLOOR PLAN  
ENGINEERING BUILDING  
1930 S.W. FOURTH

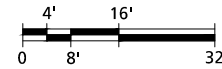
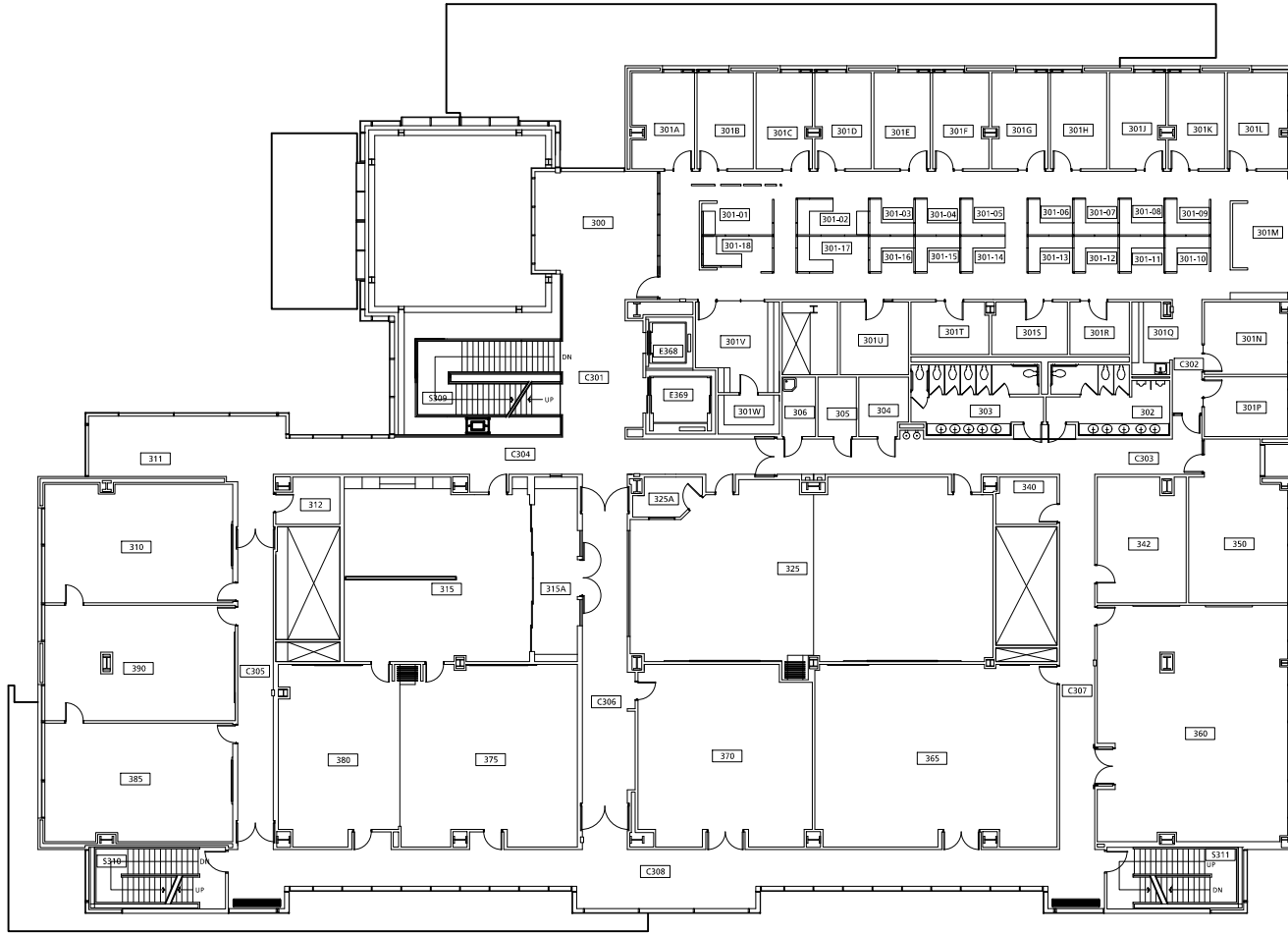


SECOND FLOOR PLAN



Portland State  
UNIVERSITY  
Capital Projects and Construction  
<http://www.pdx.edu/construction>

THIRD FLOOR PLAN



091\_A3

DRAWN BY:  
RCB

DATE:  
4/2016

THIRD FLOOR APLAN  
ENGINEERING BUILDING  
1930 S.W. FOURTH



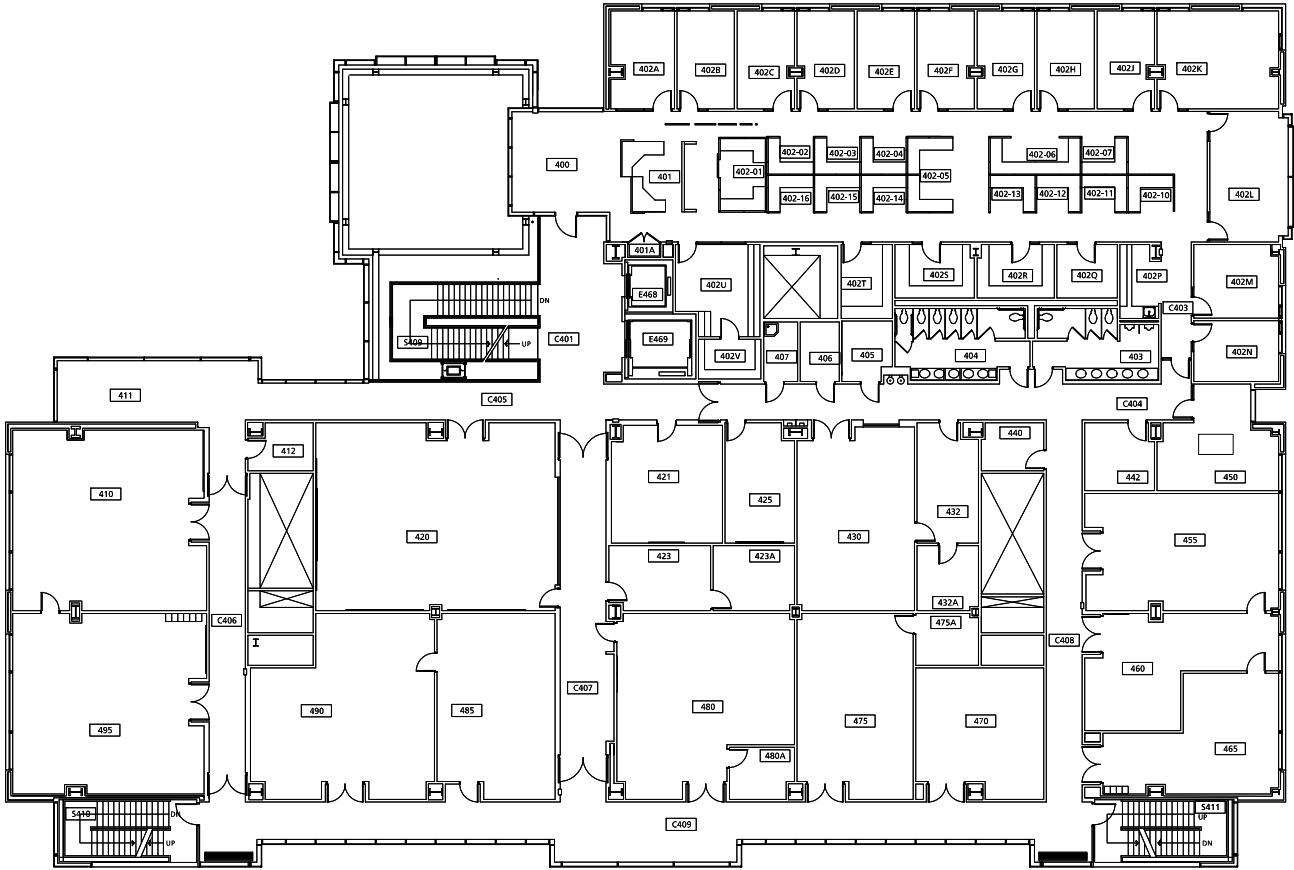
Portland State  
UNIVERSITY  
Capital Projects and Construction  
<http://www.pdx.edu/construction>

091\_A4

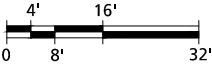
DRAWN BY:  
RCB

DATE:  
4/2016

FOURTH FLOOR PLAN  
ENGINEERING BUILDING  
1930 S.W. FOURTH

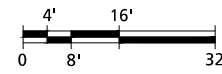
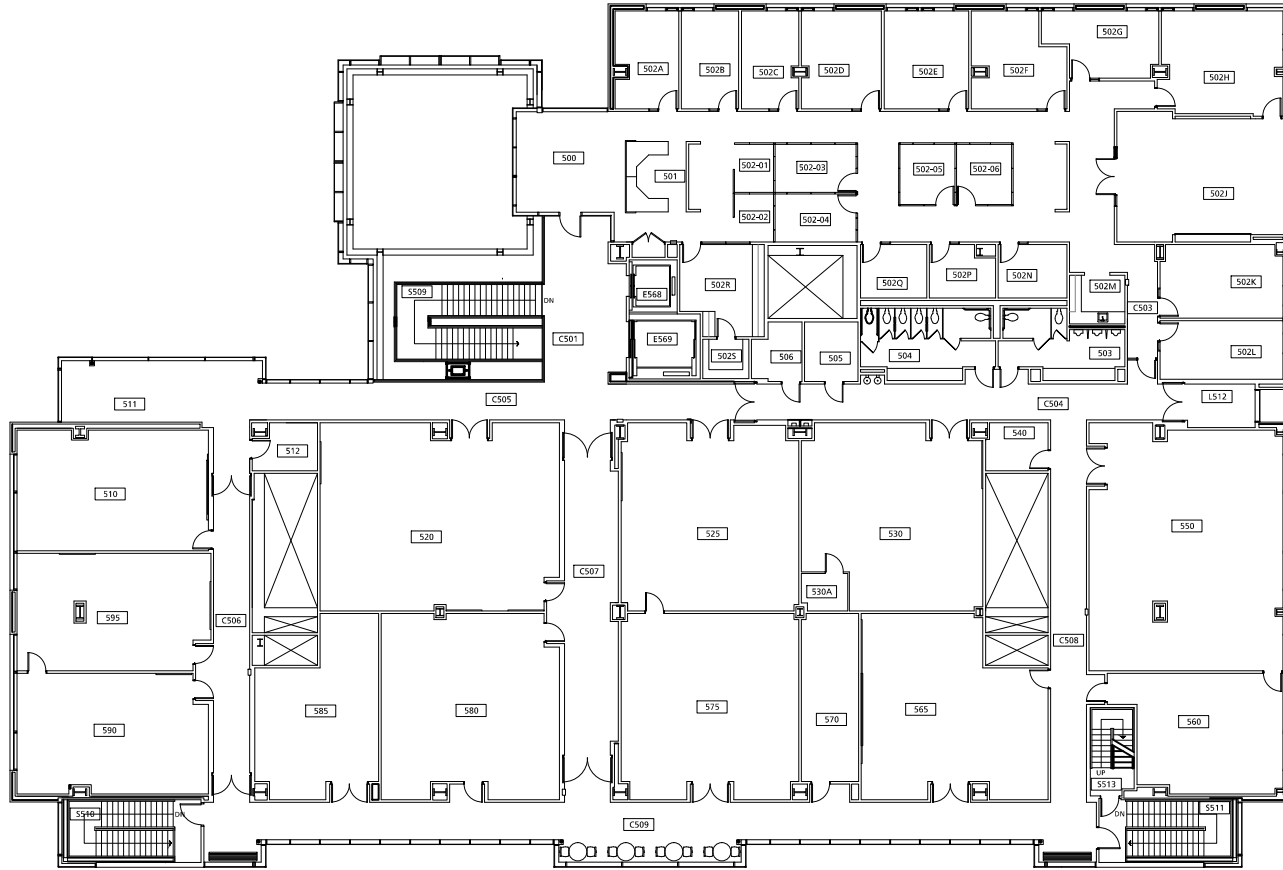


FOURTH FLOOR PLAN



Portland State  
UNIVERSITY  
Capital Projects and Construction  
<http://www.pdx.edu/construction>

FIFTH FLOOR PLAN



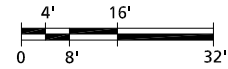
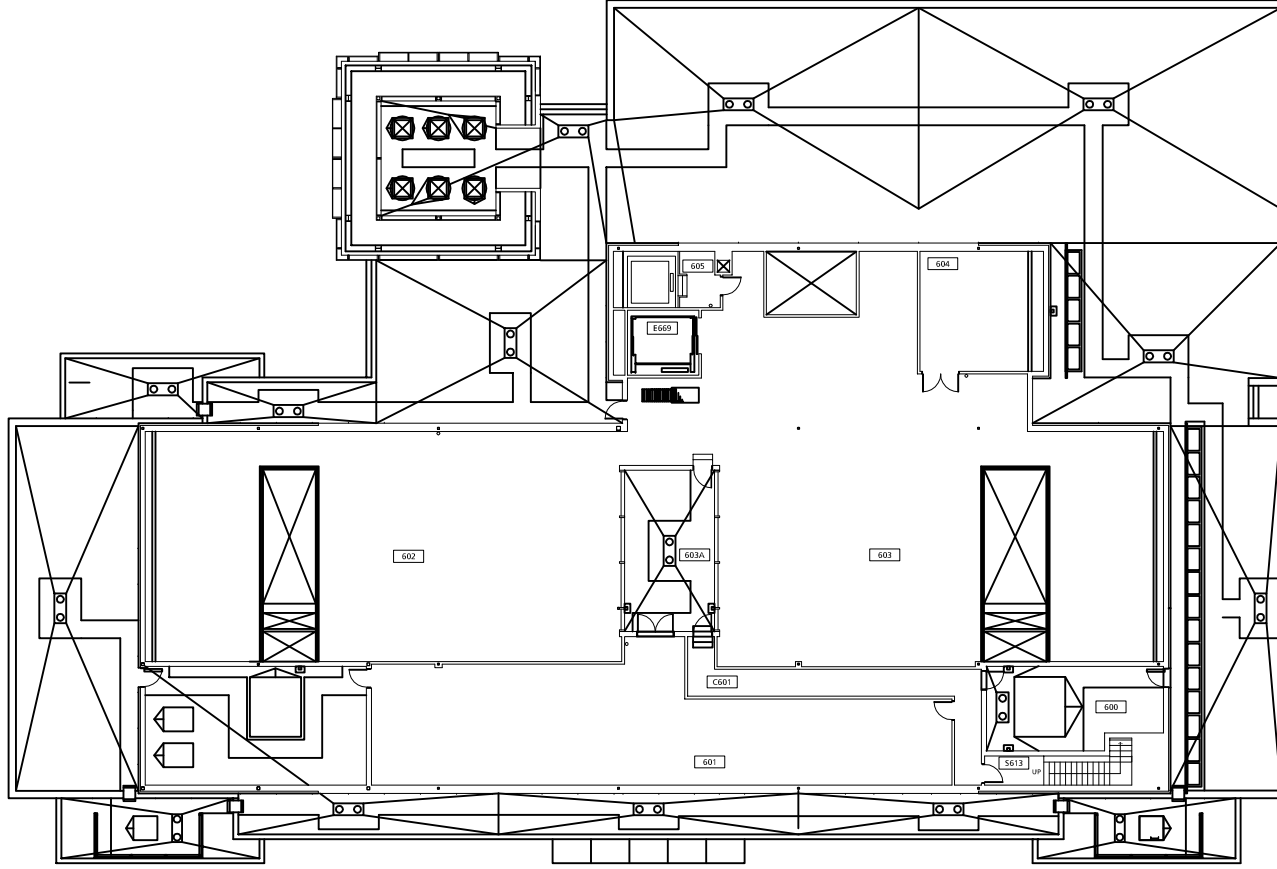
091\_A5

DRAWN BY:  
HH  
DATE:  
6/2017

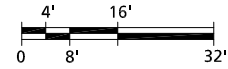
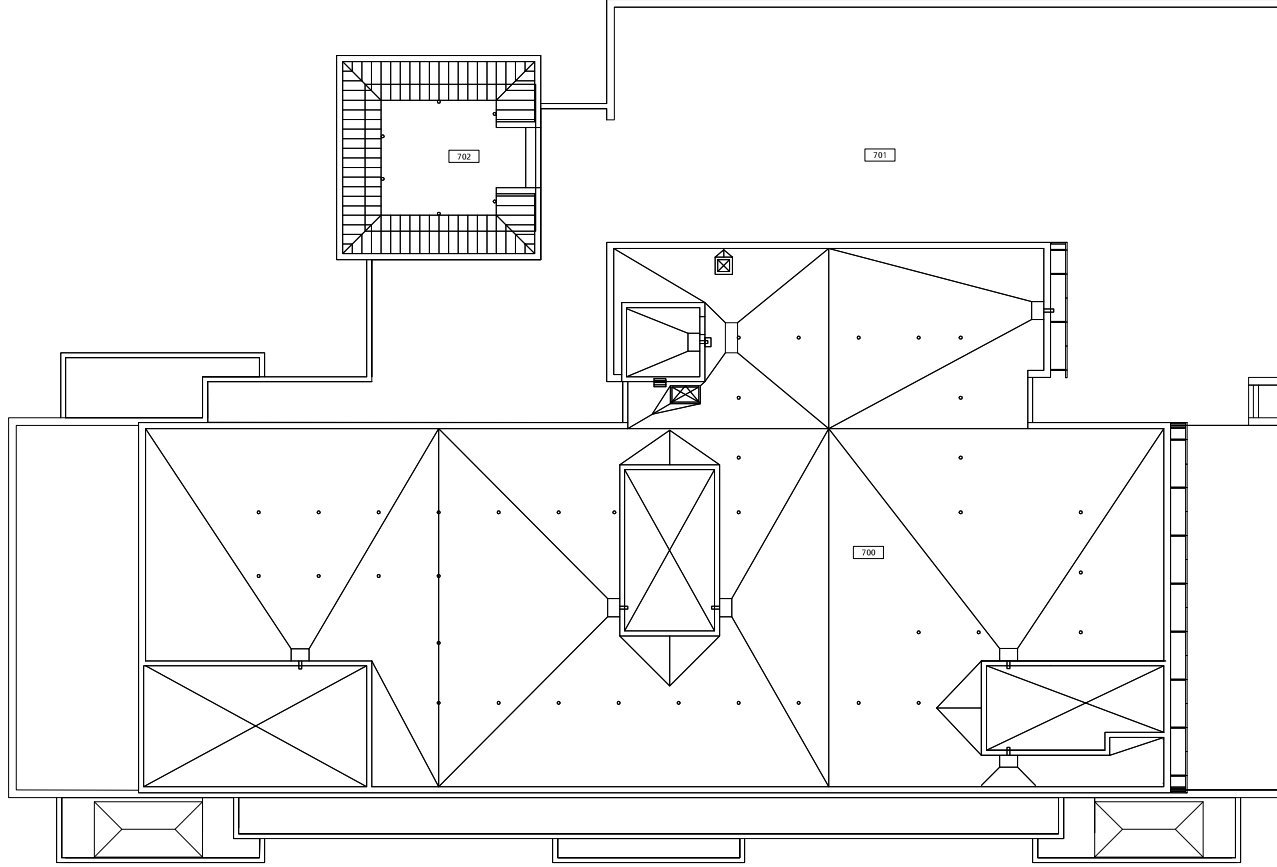
FIFTH FLOOR PLAN  
ENGINEERING BUILDING  
1930 S.W. FOURTH

Portland State UNIVERSITY  
Capital Projects and Construction  
<http://www.pdx.edu/construction>

PENTHOUSE FLOOR PLAN



ROOF PLAN



091\_A7

DRAWN BY:  
LRR

DATE:  
01/12/2009

ROOF PLAN  
ENGINEERING BUILDING  
1930 S.W. FOURTH