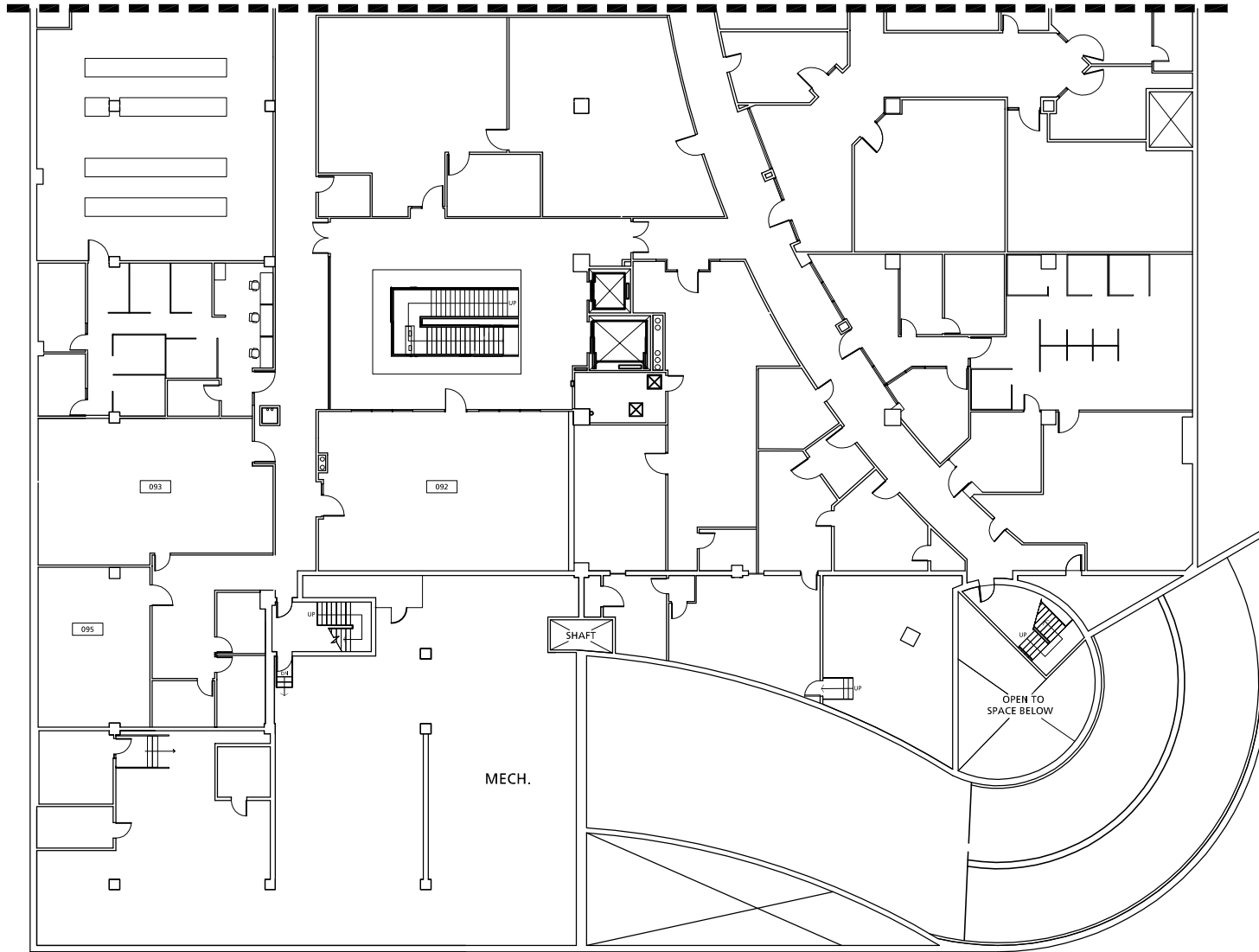


SEE FOURTH AVENUE BUILDING FLOORPLAN FOR MORE INFORMATION



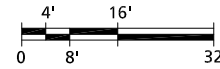
091_A1.1

DRAWN BY:
BRS

DATE:
10/16

FIRST FLOOR PLAN
ENGINEERING BUILDING
1930 S.W. FOURTH

LOWER LEVEL - ROOMS 92, 93 & 95



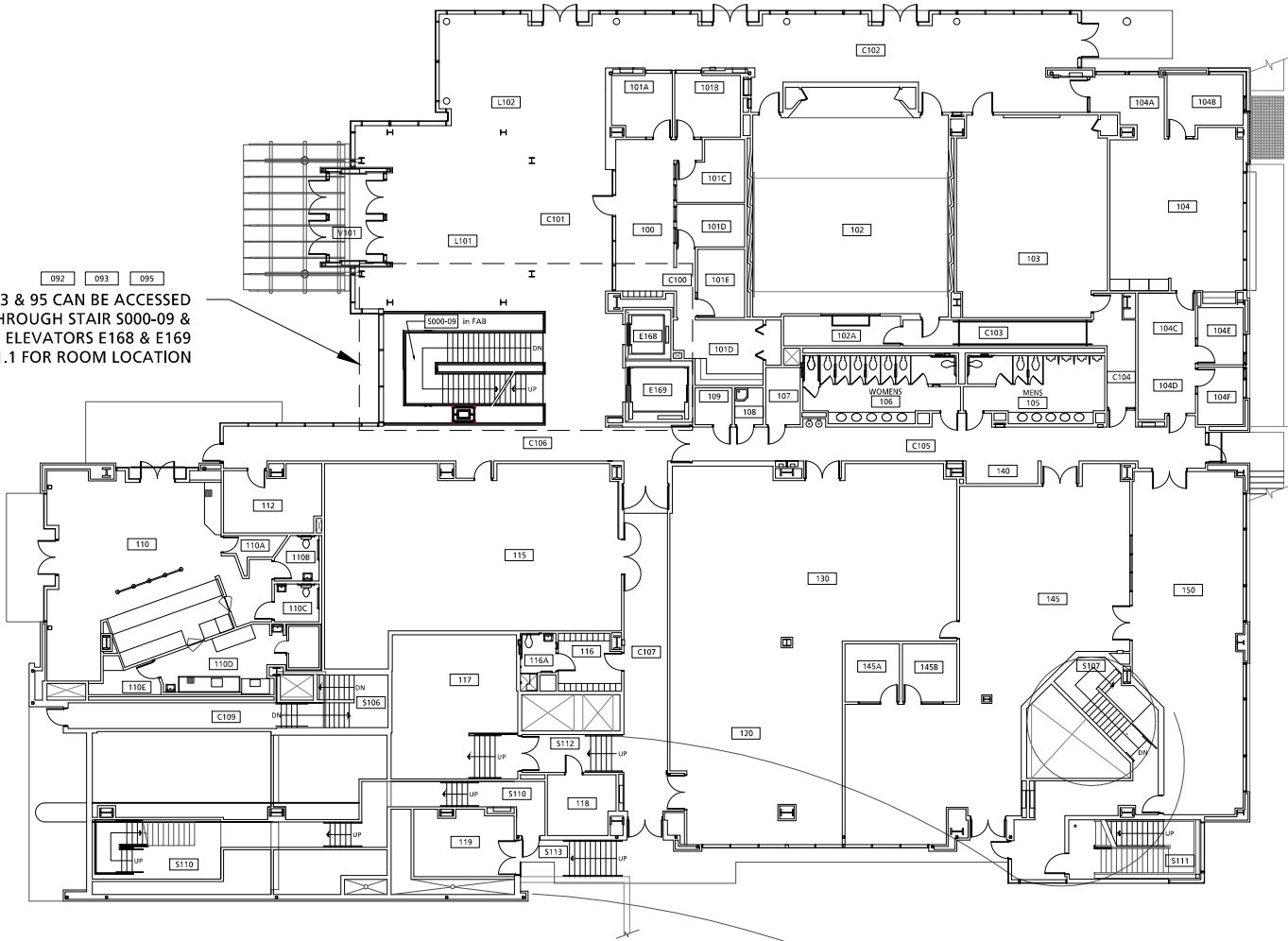
Portland State
UNIVERSITY
Capital Projects and Construction
<http://www.pdx.edu/construction>

DRAWN BY:
HH

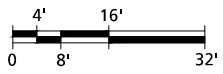
DATE:
07/2018

FIRST FLOOR PLAN
ENGINEERING BUILDING
1930 S.W. FOURTH

ROOM 92, 93 & 95 CAN BE ACCESSED
THROUGH STAIR S000-09 &
ELEVATORS E168 & E169
SEE SHEET A1.1 FOR ROOM LOCATION



FIRST FLOOR PLAN

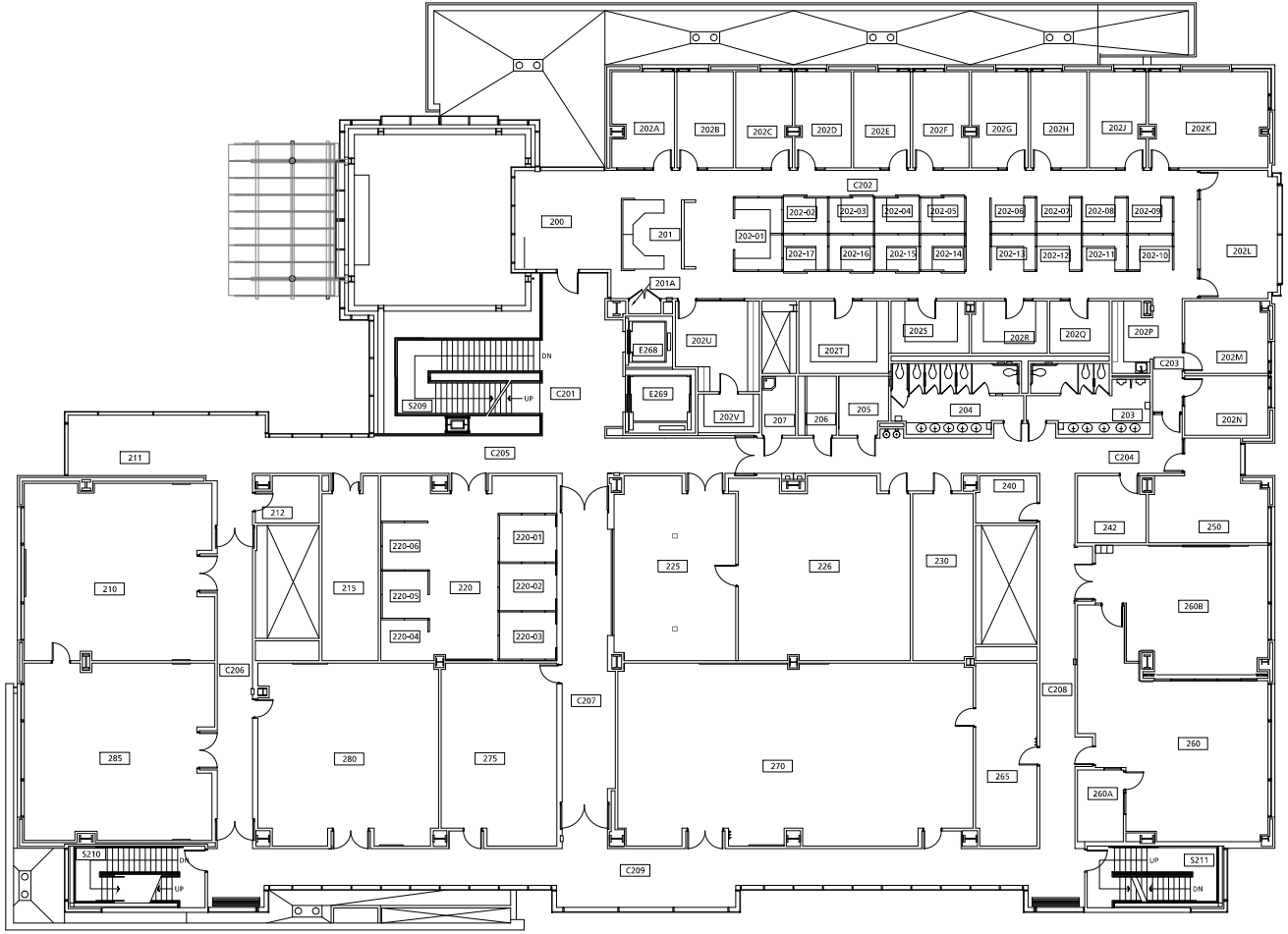


091_A2

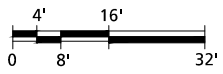
DRAWN BY:
RCB

DATE:
4/2016

SECOND FLOOR PLAN
ENGINEERING BUILDING
1930 S.W. FOURTH

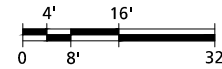
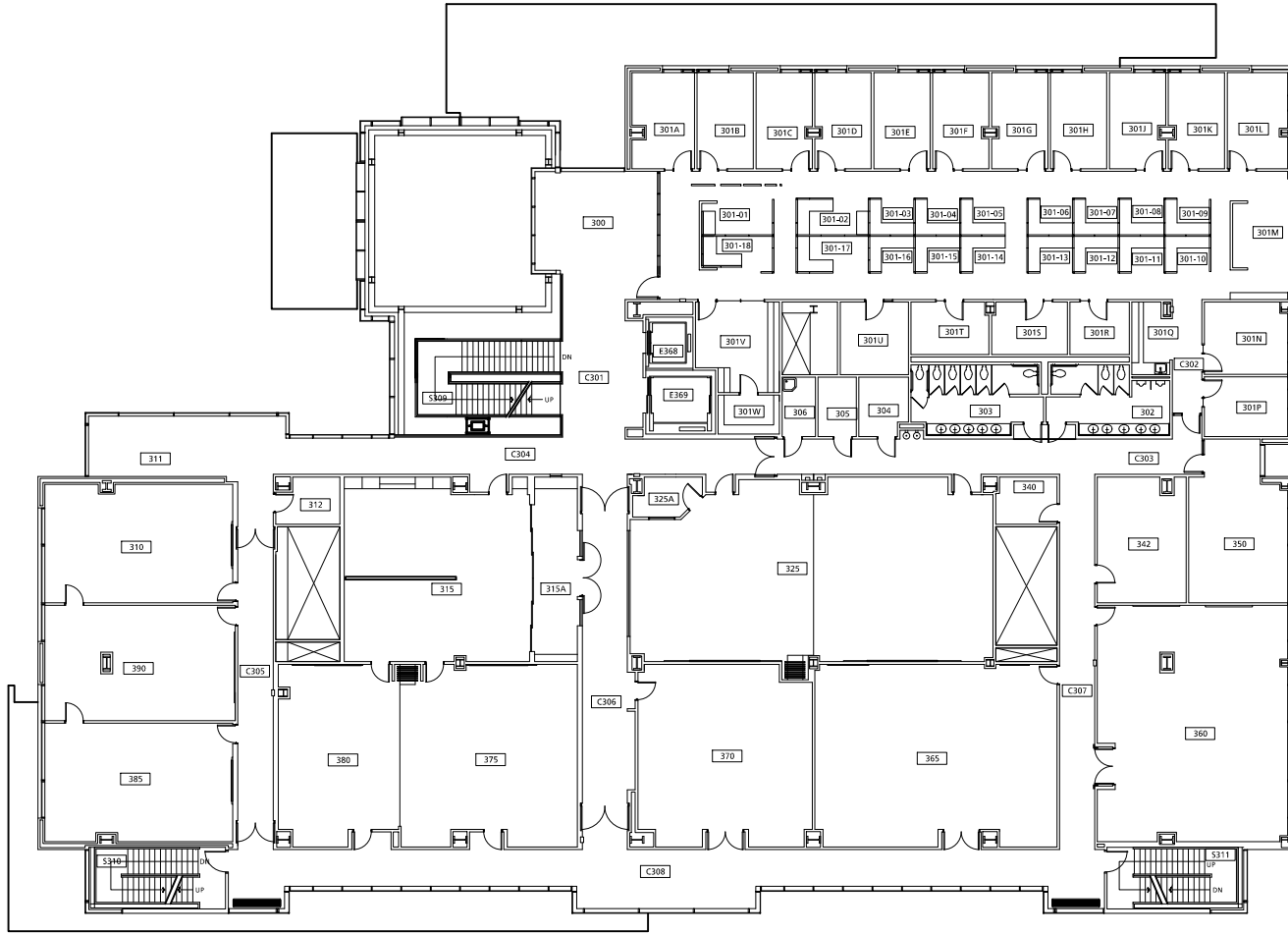


SECOND FLOOR PLAN



Portland State
UNIVERSITY
Capital Projects and Construction
<http://www.pdx.edu/construction>

THIRD FLOOR PLAN



091_A3

DRAWN BY:
RCB

DATE:
4/2016

THIRD FLOOR APLAN
ENGINEERING BUILDING
1930 S.W. FOURTH



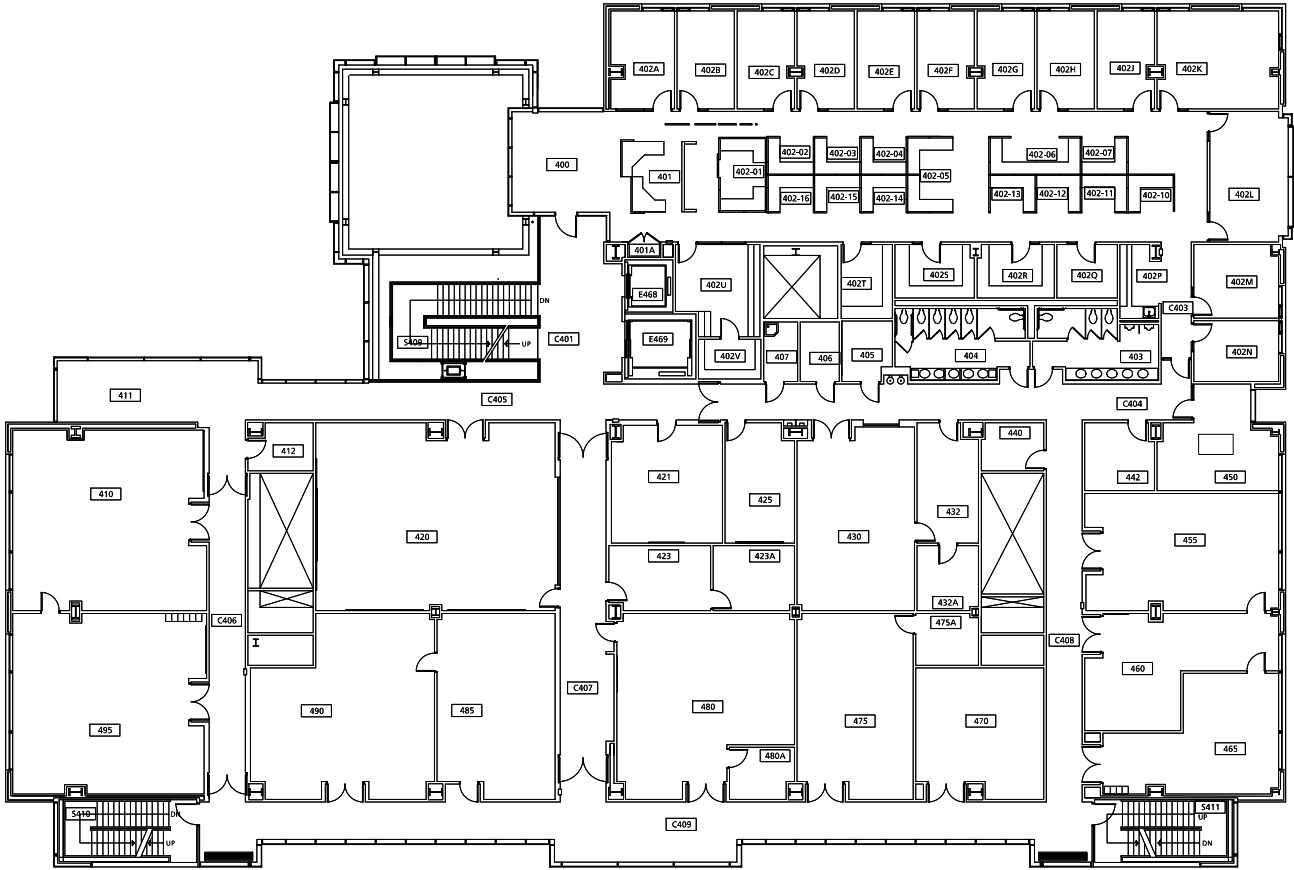
Portland State
UNIVERSITY
Capital Projects and Construction
<http://www.pdx.edu/construction>

091_A4

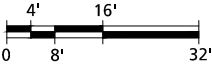
DRAWN BY:
RCB

DATE:
4/2016

FOURTH FLOOR PLAN
ENGINEERING BUILDING
1930 S.W. FOURTH

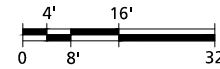
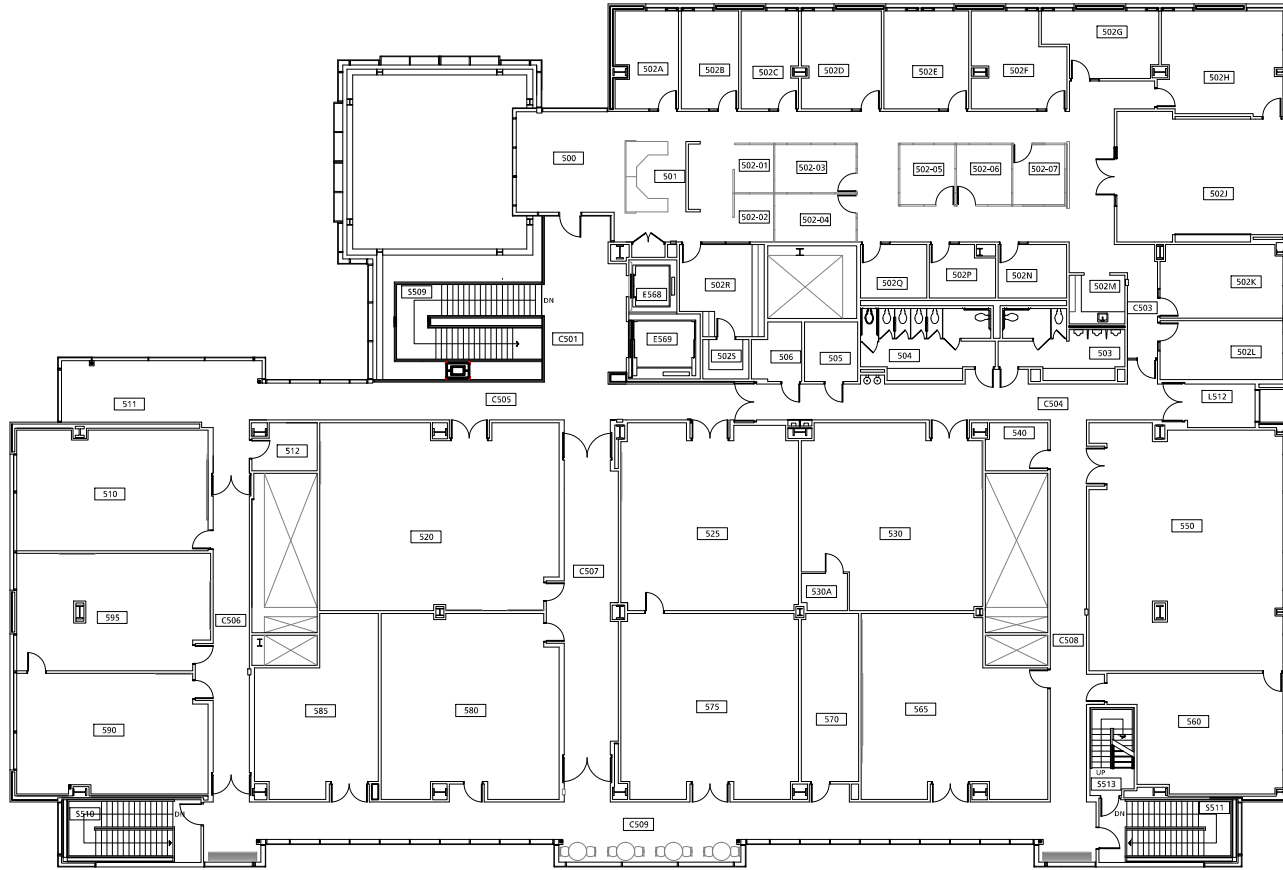


FOURTH FLOOR PLAN



Portland State UNIVERSITY
Capital Projects and Construction
<http://www.pdx.edu/construction>

FIFTH FLOOR PLAN



091_A5

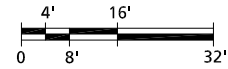
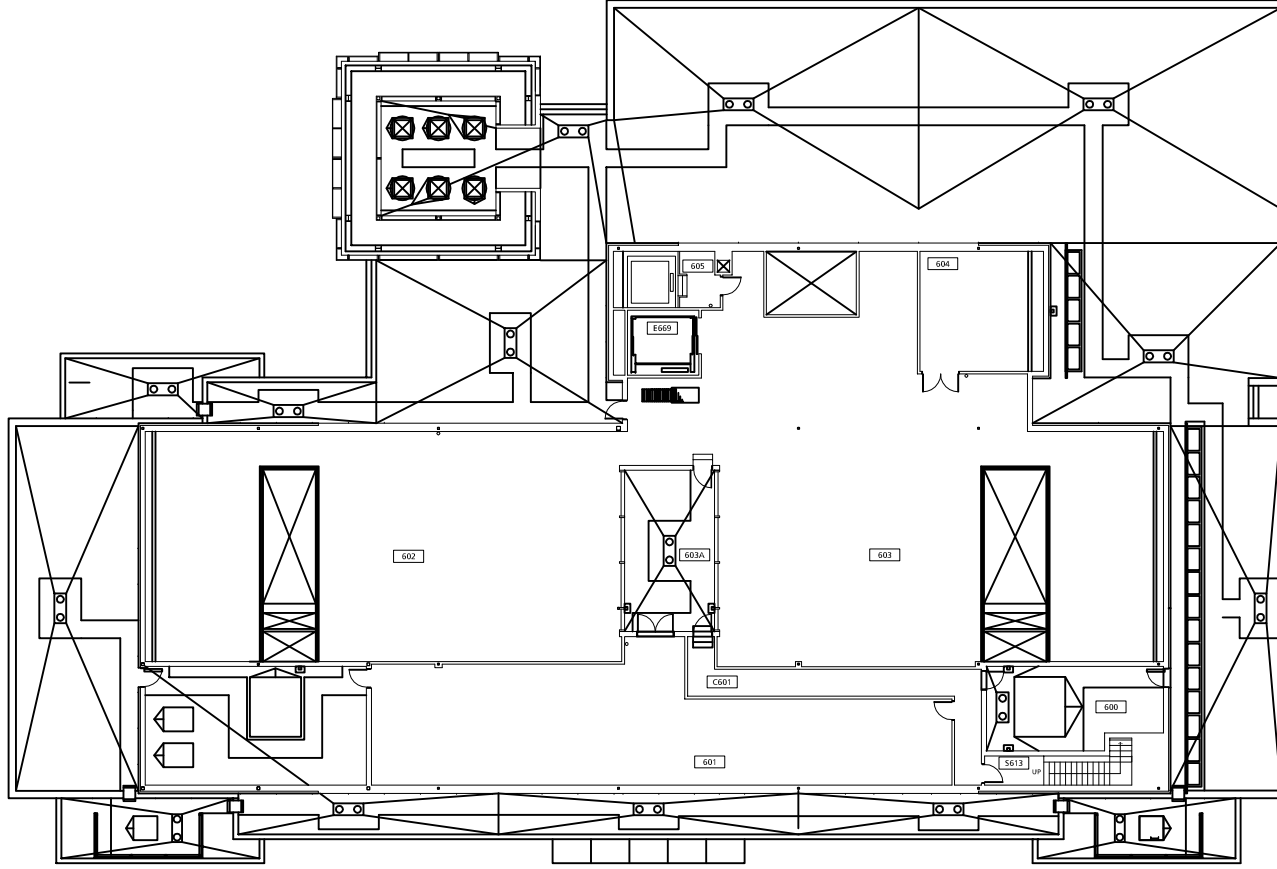
DRAWN BY:
NL

DATE:
12/2018

FIFTH FLOOR PLAN
ENGINEERING BUILDING
1930 S.W. FOURTH


Portland State
 UNIVERSITY
 Capital Projects and Construction
<http://www.pdx.edu/construction>

PENTHOUSE FLOOR PLAN



ROOF PLAN

