

Upcoming Lab Safety Trainings:

Nov 17th 2023 10:00am–1:00pm
Dec 15th 2023 10:00am–1:00pm
Sign up: [Safety Training form](#)



The Micro Gram

A lab safety newsletter for the PSU campus community.
 Portland State
Environmental Health & Safety



NEW! [Lab Incident Reporting Posters](#) will be going up soon!

"Intuition is always right in at least two important ways. It is always in response to something. It always has your best interest at heart"
— **Gavin De Becker**, [The Gift of Fear: Survival Signals That Protect Us from Violence](#)

Lessons Learned

In a recent report (Summer 2023) by another institution, a -80° freezer was mistakenly turned off by a staff member who responded to persistent alarms going off. This resulted in 20 years of research (worth \$1 million) being ruined.
Don't let this happen to you!
Please be sure that proper contact information is clearly listed on all refrigerators and freezers, particularly Equipment stored in shared spaces. If you are in need of assistance with this, please don't hesitate to reach out to [EHS](#).

CONTACT INFORMATION FOR THIS REFRIGERATOR/FREEZER

PRIMARY CONTACT	SECONDARY CONTACT:
NAME: _____	NAME: _____
☐: _____	☐: _____



HAD A LAB INCIDENT?



forms.gle/5Lm2DSKkzU7w9tMd7



Please document the incident using this form!

Reportable incidents include, but are not limited to...

- Chemical Exposures and Spills
- Burns and Cuts
- Electric Shock or Exposure
- Injury from a Machine

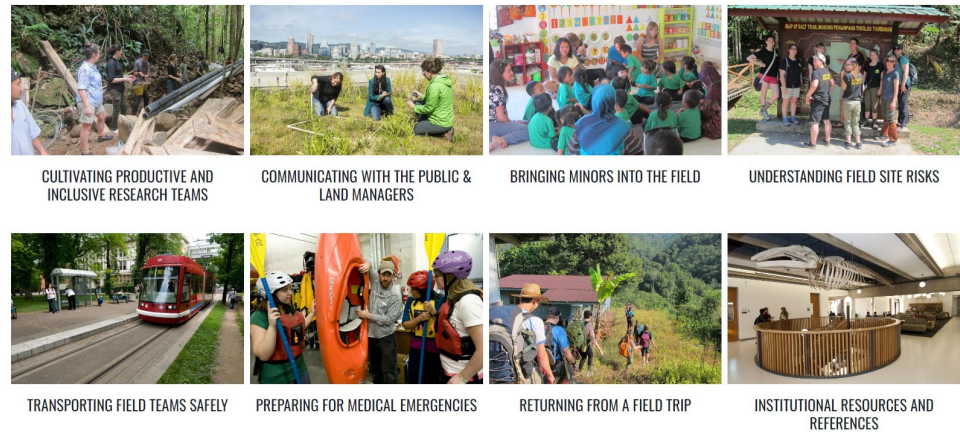
HELP BUILD A CULTURE OF SAFETY!



PSU has a new [Field Work Safety Manual](#). Check it out!

- [Cultivating productive and inclusive research teams](#)
- [Communication with the public & land managers](#)
- [Bringing minors into the field](#)
- [Understanding field site risks](#)
- [Transporting field teams safely](#)
- [Preparing for medical emergencies](#)
- [Returning from a field trip](#)

FIELD SAFETY MANUAL



Have a suggestion for a lab safety topic?
Email: lindsah@pdx.edu



Click on hyperlinks to learn more

[News from Environmental Health & Safety at PSU](#)