

Department of Civil and Environmental Engineering

Environmental Engineering Program

pdx.edu/cee/ceeadvising-ug

Possible 4 Year Course Plan

FRESHMAN			SOPHOMORE			JUNIOR			SENIOR			
FALL	WINTER	SPRING	FALL	WINTER	SPRING	FALL	WINTER	SPRING	FALL	WINTER	SPRING	
Math / Science Requirements												
CALC I MTH 251		CALC II MTH 252	LIN ALG MTH 261	CALC IV MTH 254	DIF EQ I MTH 256							
CHEM CH 221	CHEM CH 222		PHYSICS PH 221 PH 222 PH 223									
CH 227	ELEM MICRO BIOL Bi 234		PH 214	PH 215	PH 216							
	Bi 235 Lab					GEOL ENGR G 301						
Engineering / Computer Science Requirements												
CEE INTRO CE 111	Comptns CE 112	GRAPH CE 115	STATICS EAS 211	STREN OF MAT EAS 212	DYNAM EAS 215	FLUID MECH CE 361	HYDR-AULICS CE 362	WATER RES ENGR CE 364	ENVE Elective	CHEM ENVIR TOXINS CE 480	ENVE Elective	
CE 111L	CE 112L	CE 115L	Apply for CEE Upper Division Program			ENGR THERM ME 321	ENV ENGR CE 371	CEE Statistics CE 410	W/WW TRT CE 474	ENVE Elective	ENVE Elective	
						ENVE 365	ENVE 366	ENVE 370	ENVE Elective	DSG I CE 484	DSG II CE 494	
						ENVE 368	ENVE 369	Env Soils CE 345	ENVE Elective	CE 484L	CE 494L	
						CE 315				ENVE Elective		
FRESHMAN INQUIRY			General Education Requirements (please see PSU Bulletin for details)									
UNST 1XX	UNST 1XX	UNST 1XX	UNST 2XX	UNST 2XX	UNST 2XX	UNST *c UP DIV CLUST		PRIV *c PUBLIC INVEST EC314U		UNST *c UP DIV CLUST		

EXPLANATION

CREDIT HOURS

Total credits 187

Shaded courses to be completed prior to Upper Division admission.

2020-21



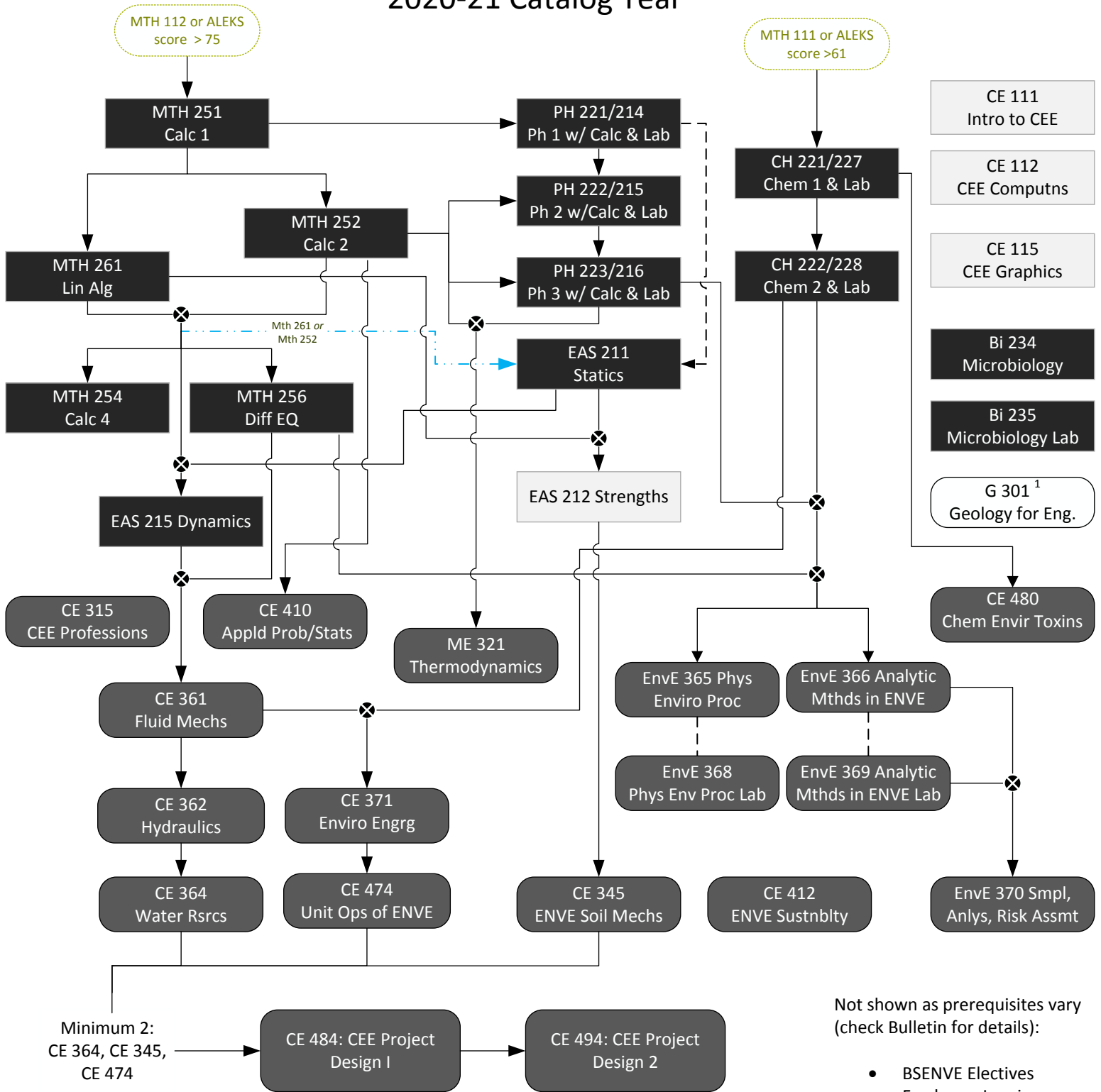
CE 484 & 494 Fulfill UNST Capstone.

24 total credits of ENVE Electives required, see PSU Bulletin for list of applicable courses.

*c EC314U is included in the following upper division clusters: a) Community Studies, b) Design Thinking/Innovation/Entrepreneurship, and c) Knowledge, Values, and Rationality. Please speak with an adviser before selecting sophomore inquiry and upper division cluster courses.

BSENVE Course Flow Chart

2020-21 Catalog Year



Not shown as prerequisites vary (check Bulletin for details):

- BSENVE Electives
- Freshman Inquiry
- Sophomore Inquiry
- Upper Division Clusters

¹ Admission to ENVE UD not required. Passing grade of C- or higher.

