

**Summary
of
Findings**

**Space Needs Assessment
Committee**

**Appointees
to SNAC by
the Provost
and Council
of Academic
Deans**

Ethan Seltzer, Committee Chair

Director, School of Urban Studies and Planning

Duncan Carter

Associate Dean, College of Liberal Arts and Sciences

Mike Driscoll

Vice Provost, Academic Personnel & Budget, Office of Academic Affairs (OAA)

Ron Geason

Finance Director - College of Engineering & Computer Science

Darrell Grant

Asst. Professor Jazz Studies, Music Department

Bill Greenfield

Chair, Department of Educational Policy, Foundations, and Administrative Studies

Maureen O'Connor

Professor, School of Business Administration

Tom Pfingsten

Director, Millar Library

Glen Sedivy

Asst. Dean of Administration and Summer Session, Extended Studies

Lisa Vuksich

Executive Asst to the Dean, Graduate School of Social Work

**Staff to the
Committee:**

Burt Ewart

**Manager of
Campus Design
and Planning,
Facilities and
Planning**

Mark Wubbold

**Research
Assistant, Finance
& Administration**

Assess current space issues, including

- **Space currently used inefficiently**
- **Space that is needed to optimize the learning environment**
- **Issues regarding inappropriate use and arrangement of spaces**
- **Opportunities for research lost for lack of suitable space**

Project space needs based on enrollment growth:

- **General undergraduate population growth**
- **How growth patterns are affected by out-of-state/country students vs. local students**
- **Effect of providing more student housing on campus**
- **Interrelationship between programs when growth in one field is disproportionately higher than other fields.**

Discover and disseminate ideas, concerns and priorities of the Campus Community

Prepare report to the Executive Committee and the Council of Academic Deans suggesting policies regarding growth

The Charge to the Committee

**As Presented by
Dr. Jay Kenton,
Vice President of
Finance and
Administration**

July 15, 2003

The Committee was asked to consider the space needs of the campus in the following areas:

- **Instructional** (classrooms, laboratories, etc.)
- **Research**
- **Administrative/Office**
- **Support** (Student Affairs, Library, and other support functions)
- **Auxiliary Service** (student union, recreation, athletics, housing, parking, food services, open space, etc.)

**The Charge
to the
Committee**

The Core Three Issues

The Committee decided that an in-depth analysis of departmental growth relationships and changes to the campus climate due to increased on-campus housing and out-of-area students was more detailed than could be appropriately dealt with in the timeframe allotted. Therefore, the SNAC Report broadly addresses:

- 1) Current Unmet Space needs
- 2) Space needed to support enrollment of **35,000** students by 2012 (30,000 on the PSU main campus and 5,000 at other sites)
- 3) Space needed to support externally funded research levels of **\$50M, \$75M** and **\$100M** annually.

Background material initially provided:

The Charge to the Committee

1) Current Space Inventory for Each Academic Unit

Civil Engineering Space Inventory As of March 30, 2004

Type of Space	Location	Room	Number of Occupants	Floor Area
Staff Office	Science Building I	128 -	2 Stations	444 SF
Office Facilities Services	Science Building I	134 -	- Stations	96 SF
Conference Room (Office Related)	Science Building I	138 -	10 Stations	192 SF
Faculty Office	Science Building I	138 A	1 Station	249 SF
Open Laboratory	Campus & Grounds Building	109 -	- Stations	1,604 SF
Open Laboratory	Science Building I	15 -	- Stations	897 SF
Non-Class Laboratory Facilities Service	Science Building I	119 A	- Stations	90 SF
Non-Class Laboratory	Science Building I	429 -	- Stations	540 SF
Non-Class Laboratory	Science Building I	451 -	- Stations	142 SF
Non-Class Laboratory	Science Building I	433 -	- Stations	90 SF
Non-Class Laboratory	Science Building I	433 A	1 Station	149 SF
Non-Class Laboratory	Science Building I	32 -	- Stations	600 SF
Non-Class Laboratory	Science Building I	42 -	- Stations	1,380 SF
Non-Class Laboratory Facilities Service	Science Building I	42 A	- Stations	70 SF
Non-Class Laboratory Facilities Service	Science Building I	42 B	- Stations	132 SF
Open Laboratory	Science Building I	15 -	8 Stations	300 SF
Open Laboratory	Science Building I	15 -	8 Stations	179 SF
Open Laboratory	Science Building I	15 -	8 Stations	92 SF

2) Excerpts from *Final Report of the Budget and Priorities Committee*

REPORT TO PRESIDENT BERNSTINE AND THE EXECUTIVE COMMITTEE PORTLAND STATE UNIVERSITY

Budget and Priorities Committee
June 3, 2003

3) Excerpts from *Vision, Values and Priorities* and *White Paper* (Budget and Priorities Committee)

"With her own wings":
Toward Securing Portland
State University's
Financial Base

"She flies with her own wings"
—Oregon state motto

Methodology

- **Each Committee Member was charged with ascertaining the space needs of his/her Academic Unit.**
- **Committee members to determine how the lack of adequate or appropriate space affects the ability of PSU and each unit to meet enrollment targets, curricular goals, research objectives and community services needs.**
- **Committee staff, Mark Wubbold and Burt Ewart, met with members and others to draw out information and confirm initial reports.**

Data came back in a variety of formats and levels of detail

Data Assembly

From formal numerical matrices

To formal anecdotal analyses

CUPA Space Needs
October 6, 2003

The needs of the College of Urban and Public Affairs can be divided into three main categories:

- 1) Classrooms – Units within the College report that there is an immediate need for more high tech classrooms of all sizes, but particularly for 75-100 students and 100-165 students. Due to the nature of the material presented in classes in the College, it will be essential to equip all classrooms with up-to-date presentation equipment linked to the University's network. We estimate that to simply meet known and upcoming needs 5-7 rooms able to hold 75-100 students, and 3-5 for 100-165 are needed in the near future. In addition, CUPA units need more teaching labs equipped with computer stations for every student. We currently have one such facility with 12 stations, but need, on a regular basis, a teaching lab with between 25 and 35 stations. The current inventory of hightech classrooms and labs is inadequate to meet existing needs. Without additions to that inventory, it will be extremely difficult to continue to meet curricular goals and to contribute to the overall growth of the university through increases in enrollment in College programs.
- 2) Faculty Offices and Graduate Student Space – Some units are reporting a lack of faculty space. Current unmet needs are approximately 2 – 3 faculty offices. Future enrollment growth ultimately put even greater pressure on our supply of faculty office space, including dedicated adjuncts. We currently

CURRENT UNMET SPACE NEEDS					
Assignable Sq. Ft.		140		130	
CLAS			ANTHROPOLOGY		BIO
Currently Located at			NH		SB2
	Assignable SF/Sta	Stations	/Net Area	Stations	/Net Area
High Tech Classroom (25-48) students	18		.		.
Std. Classroom (25-50)	16		.		.
Large classrooms (50 to 99 st.)	14	80	1,120		.
Lecture Hall - (100+ Seat)	13		.		.
Seminar room	20	15	300		.
	135	1	135	1	135
	135		.		.
	135		.		.
	100		.		.
	90		.		.
	65		.		.
	35		.		.
	50	50	2,500		.

Subject: Space Needs Data
From: wubold@pdx.edu
Date: Tue, 13 Jan 2004 14:33:26 -0800
To: Burt Ewart <ewarb@pdx.edu>

Hello Burt,

I spoke to the folks in Military Science and got their unmet and future needs. Could you add them to the master spreadsheet?

Unmet Current Needs:
1 -30 student classroom
2 -Staff Offices
2 -Faculty Offices
400 sq. ft. of storage

Future Needs:
200 sq. ft. of storage
1 -30 student classroom

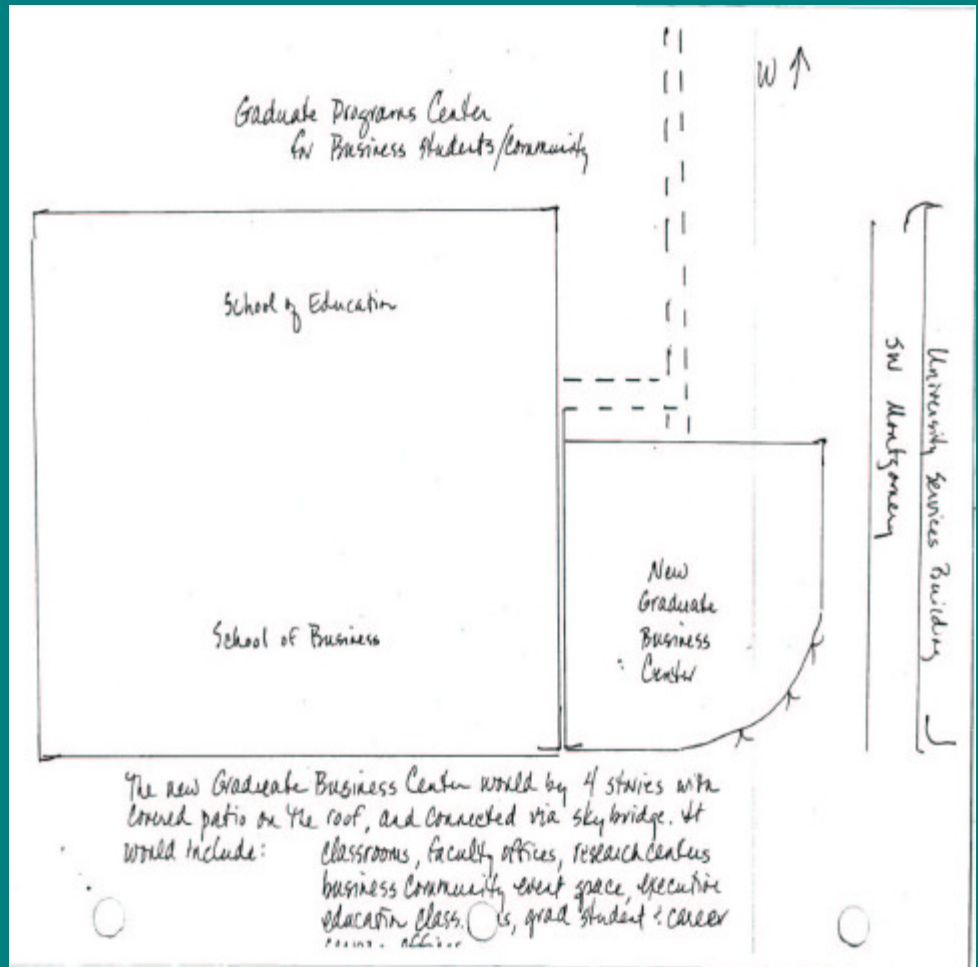
Thanks.
Mark

Mark Wubold
Office of Finance and Administration
Portland State University
503-725-4444
wubol@pdx.edu

To informal discussions and emails

Some units even provided proposals for new buildings

Data Assembly



SBA's Graduate Programs
Center idea

The raw data was reviewed and numerically interpreted using OUS Space Standards, and given back to the Committee for confirmation

Data Assembly

Unmet Space Needs Matrix

The image displays a complex spreadsheet titled "CURRENT UNMET SPACE NEEDS". The spreadsheet is organized into several major sections, including "EDUCATIONAL SERVICES", "GENERAL SERVICES", "BUSINESS SERVICES", "SUPPORT SERVICES", and "OTHER SERVICES". Each section contains a list of departments or programs, with columns representing various metrics such as "CURRENT SPACE", "UNMET SPACE", "TOTAL SPACE", and "PERCENT UNMET". The data is presented in a grid format, with rows for each department and columns for each metric. The spreadsheet is color-coded with yellow and green headers, and the data cells are primarily white with black text. A large teal box with white text is overlaid on the right side of the spreadsheet, containing the text: "The data was then aggregated to show general areas of demand and trends."

Support Units required special analysis:

Data Challenges

Library: Accreditation requires appropriate Library space, and the previous accreditation report questioned the current size of the Library. Various standards exist; by some measures PSU needs to double the size of its collections space, and triple its seating capacity.

Classrooms: Pooled Classrooms at PSU are currently used at 128% of OUS standards. Academic units desire more owned classrooms to accommodate special space and/or scheduling needs, but schedule their classrooms less heavily to allow non-scheduled activities. The SNAC recommendations are to increase both pooled and departmentally controlled classrooms.

Research: The Academic Units were largely unable to forecast future research needs. Based on data collected from the Office of Graduate Studies and Sponsored Research, and using industry standards, Staff prepared the growth projections summarized in the Report.

Support Units required special analysis:

Data Challenges

Parking: Parking needs are based on the Transportation Office's recommendation for parking growth, and are projected to be required incrementally as existing parking facilities are displaced and new demands placed on the current parking inventory.

Housing: While the creation of new student housing opportunities will have a significant impact on the amount and character of the University's growth, the SNAC committee did not have the resources available to research future housing needs.

Off-Campus Facilities: The Committee limited its study to the PSU downtown campus, as the facilities needed for students enrolled with our community college partners is dependent on the capacity of the various community colleges to accommodate this new initiative. It was assumed that by 2012, 5,000 students of the projected 35,000 enrollment will be accommodated at the community colleges.

Baseline Assumptions:

Findings

Study Assumptions

Current Total Campus Building Area 4,130,000 GSF

Campus Buildings Less Housing and Leased Space 3,050,000 GSF

Current Enrollment (Fall 2003 Headcount) 23,117

Future Student Headcount for Growth Projections 30,000

Percentage Predicted Growth 30%

Current Research Expenditures \$31,000,000

Findings

Academic Space Needs

Compilation of Current Space Shortages:

Academic Unit Departmental Office Space	80,000
Classrooms and Teaching Labs	210,000
Library and open Computer Labs	160,000
Administrative Space	10,000
Student Support Space	30,000
Parking/Auxiliaries (Not including Housing)	0
TOTAL CURRENT SPACE NEEDS GSF	490,000
Mitigation by Projects Currently Underway (160,000)	
NET CURRENT SPACE NEEDS GSF	330,000
Percentage Shortfall from Current Space Available	11%

Compilation of Current Space Shortages:

Findings

Academic Space Needs

Academic Unit Departmental Office Space	80,000
Classrooms and Teaching Labs	210,000
Library and open Computer Labs	160,000
Administrative Space	10,000
Other (not including Housing)	30,000
TOTAL SPACE NEEDS	490,000



Cramer Hall =
239,564 GSF



Currently Underway (160,000)

Or About 1.4 Cramer Halls

Findings

Academic Space Needs

Future Needs Based on Enrollment Growth:

Academic Unit Departmental Space	270,000
Instructional Space	210,000
Academic Support Space	325,000
Administrative Space	15,000
Student Support Space	250,000
Parking	160,000
TOTAL	1,230,000 GSF

This Represents Facilities Growth of 34%
Over Current Inventory

Future Needs Based on Enrollment Growth:

Findings

Academic

Space



270,000

210,000

325,000

15,000



Or Over 5 Cramer Halls

Future Needs Based on Research Growth (from current \$31 M volume):

Findings

Research Space Needs

To Accommodate \$50 Million add



For Each \$25 Million
beyond \$50 Million, Add



Space needs will vary based on intensity of laboratory and other special space used in specific research projects

Based on growth over last 15 years, by 2012, total Research Expenditures at PSU should be approximately \$75 Million.

By 2012 we will have 30,000 Students, and will be conducting almost \$75 Million in Funded Research. To accommodate this growth PSU will need at least:

Findings

Summary

Current Space Needs	490,000 GSF
---------------------	-------------

Academic and Support Space Due to Enrollment Growth	1,230,000 GSF
---	---------------

Research Space	250,000 GSF
----------------	-------------

Total New Space by 2012	1,970,000 GSF
--------------------------------	----------------------

Current Campus Floor Area	4,130,000 GSF
---------------------------	---------------

2012 Campus Floor Area (Not including new Housing, Retail Space or Parking for Housing or Retail)	6,100,000 GSF
--	----------------------

By 2012 we will have 30,000 Students, and will be conducting almost \$75 Million in Funded Research. To accommodate this growth PSU will need at least:

Findings

Summary

Current Space Needs 490,000 GSF

Academic and Support Space Due to Enrollment Growth 1,230,000 GSF

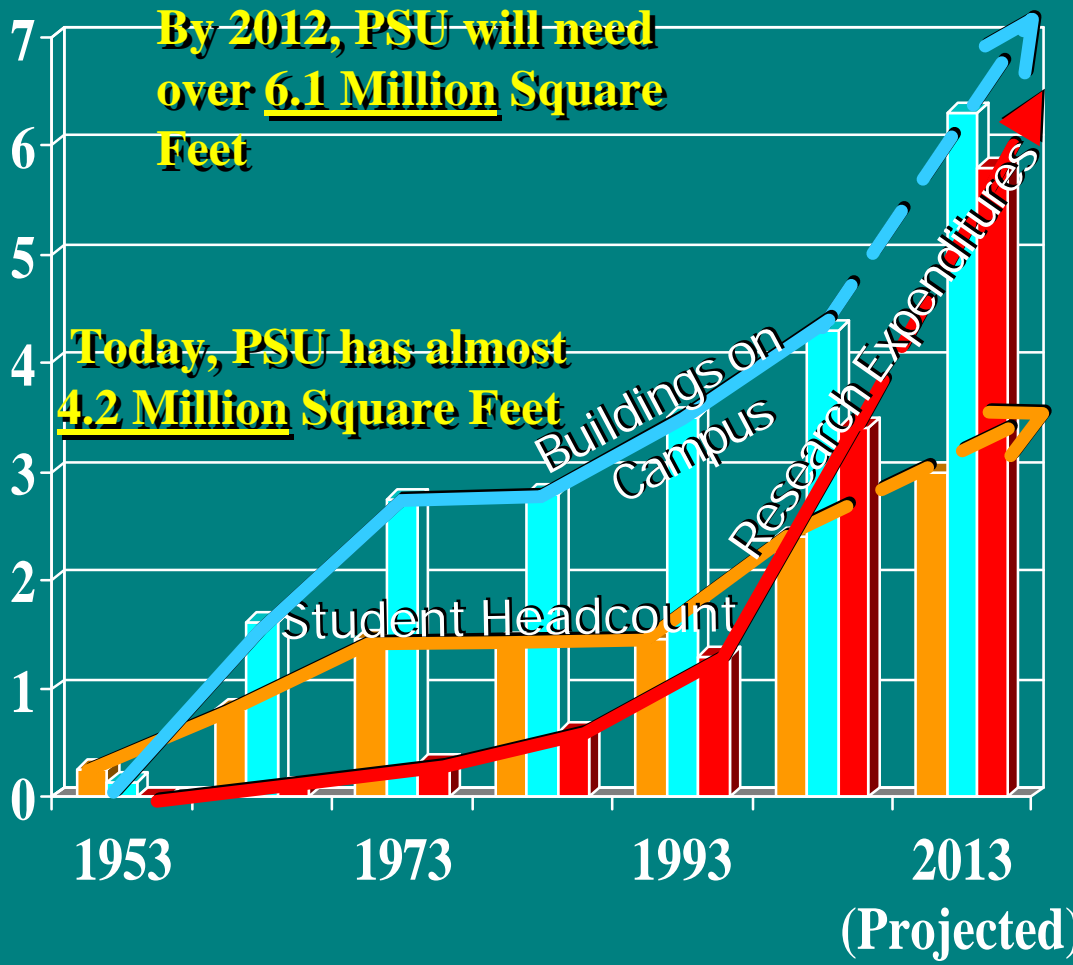


Roughly 8 Cramer Halls

2012 Campus Floor Area (Not including new Housing, Retail Space or Parking for Housing or Retail)

6,100,000 GSF

Findings
Summary
Chart



How does PSU compare to other Urban Universities?

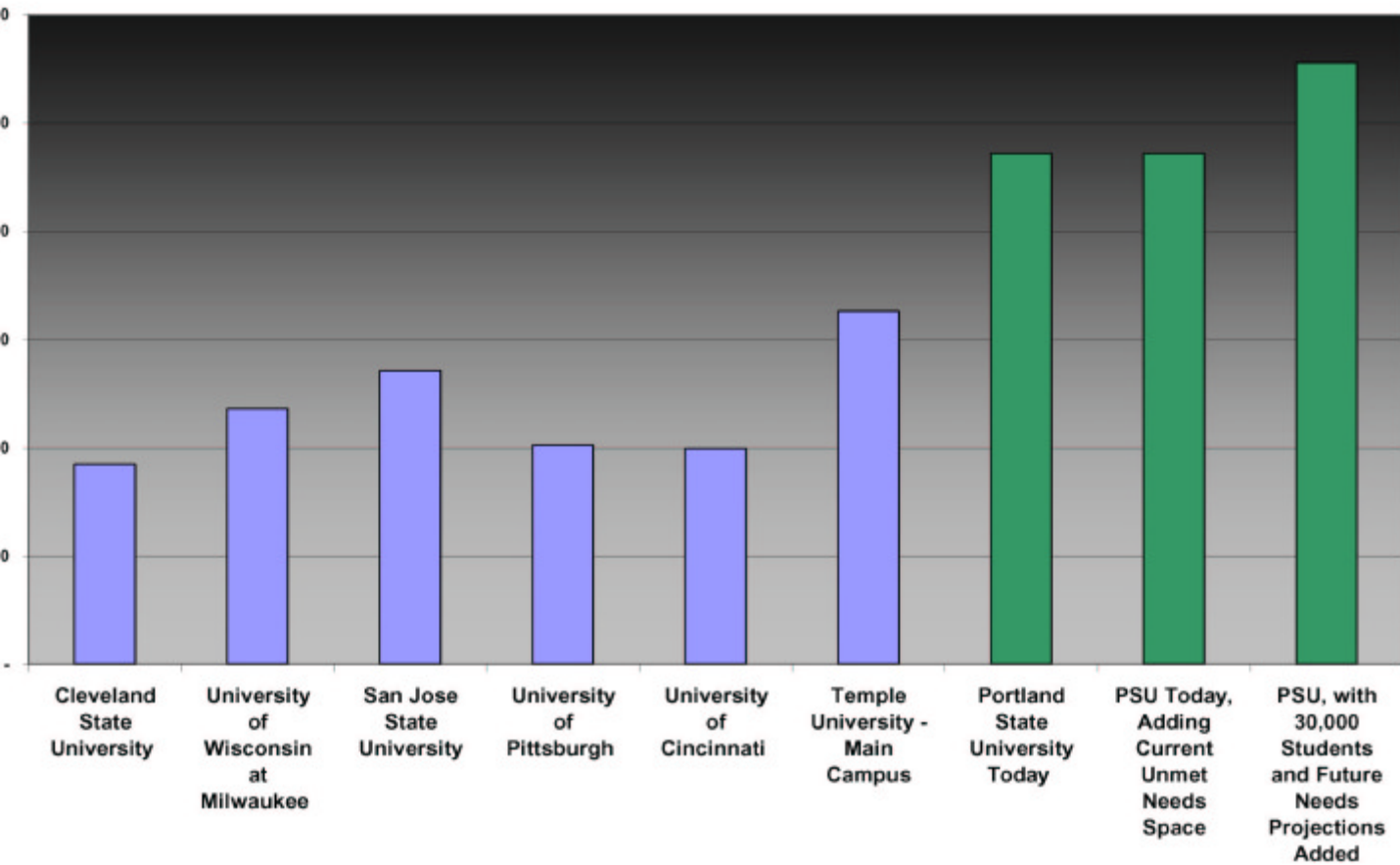
To check our findings, six urban public universities were selected based on similarities to PSU in land area, enrollment and program offerings.

How does PSU compare to other Urban Universities?

Institution	Location	TOTAL STUDENTS	Campus Acreage	Building Floor Areas	Ratio Graduates+Post-Graduates/Undergraduates	Fall 2000 Student to Faculty Ratio	Total Research Expenditures, 2001 (x \$1,000)	No. Parking Spaces	Students/ Parking Space	Housing Capacity	% Students in On-Campus Housing	Campus Building Floor Area per Student	Students per Acre of Campus Area
Cleveland State University	Cleveland, OH	15,703	85	4,106,000	51%	17.0	12,986	3,000	5.2	240	2%	261	185
University of Wisconsin	Milwaukee, WI	23,578	100	5,600,000	23%	13.0	23,492	3,000	7.9	2,500	11%	238	236
San Jose State University	San Jose, CA	24,000	89	5,842,000	37%	18.7	40,200	4,100	5.9	3,379	14%	243	271
University of Pittsburgh	Pittsburg, PA	26,710	132	9,775,000	50%	18.0	348,792	4,600	5.8	6,015	23%	366	202
University of Cincinnati	Cincinnati, OH	27,289	137	7,315,000	38%	18.8	192,895	12,000	2.3	3,600	13%	268	195
Temple University - Main Campus	Philadelphia, PA	28,355	87	6,604,668	54%	13.9	60,182	3,209	8.8	4,826	17%	233	326
Portland State University	Portland, OR	23,117	49	4,187,000	38%	18.0	16,838	3,614	6.4	1,396	6%	181	472
PSU Today, Adding Current Unmet Needs Space		23,117	49	4,677,000	38%	18.0	31,000	3,814	6.1	1,900	8%	202	472
PSU, with 30,000 Students and Future Needs Projections Added		30,000	55	6,100,000	38%	18.0	75,000	4,036	7.4	3,200	11%	203	545

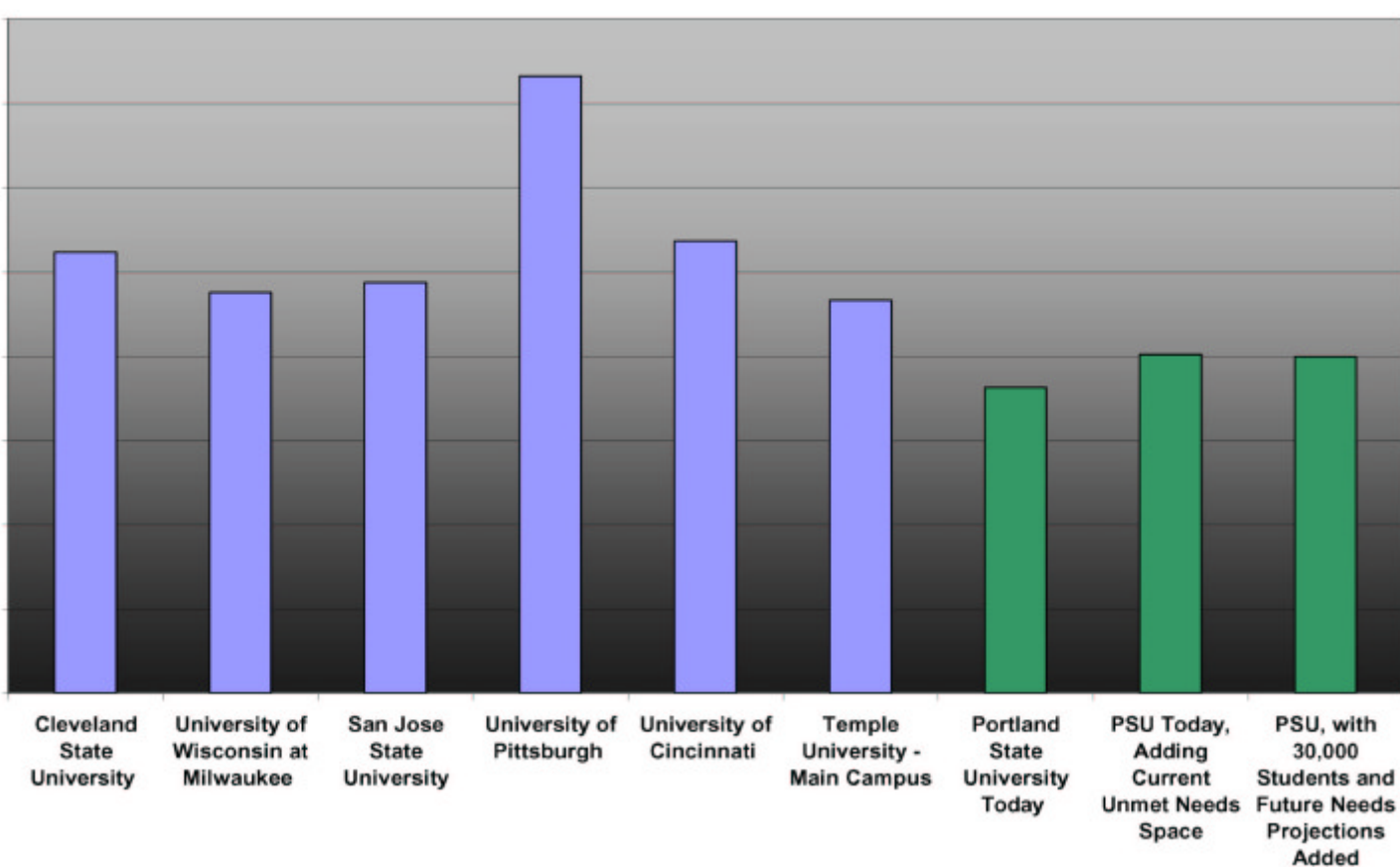
PSU compared to Similar Urban Universities

Students per Acre of Campus Area



PSU compared to Similar Urban Universities

Campus Building Floor Area per Student



1. Solve the Current Space Needs Crisis Immediately

Recommendations

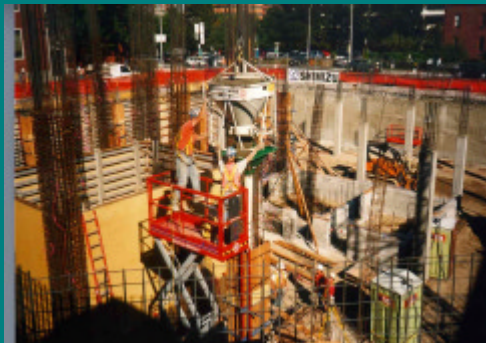
- Based on our findings, **Portland State has an immediate need for 330,000 SF of classroom, office, support, and public space**, equivalent to 1.4 Cramer Halls. This is over and above the space expected through the construction of the new Engineering tower and the Broadway Housing academic space. This current unmet need is real and **must be addressed whether enrollment grows or not**. Based on reports of biology labs scheduled on Sunday mornings, unanswered needs for informal study and meeting space, classroom use conflicting with maintenance needs, and a current lack of classroom space in general, the **current unmet need at Portland State should be regarded as a crisis** requiring immediate and direct response. To not do so will be to jeopardize faculty and staff morale and student learning.



2. Embark on a Systematic Space Creation Program

Recommendations

Additionally, to grow to an enrollment of **30,000 FTE** on the main campus, Portland State University needs to quickly **develop 1.2 million square feet** of classroom, research, support, office, and public space, the rough equivalent to 5.1 Cramer Halls. Note that this report has not investigated the space requirements, opportunities, or constraints associated with locating an additional 5,000 FTE at partner Community College or other sites.



3. Formally Engage the Campus Community in Planning Efforts

There is an immediate need to engage the entire campus community in a detailed space master planning effort to strategically plan and make capital expenditures for the next 20+ years. In taking that next step the Committee would strongly recommend that such a planning process be directed and informed by the University's Vision and Values as currently articulated. We also recommend that this planning process consider both the needs of the core campus as well as the remote learning sites that may become more important to our operations in the future.