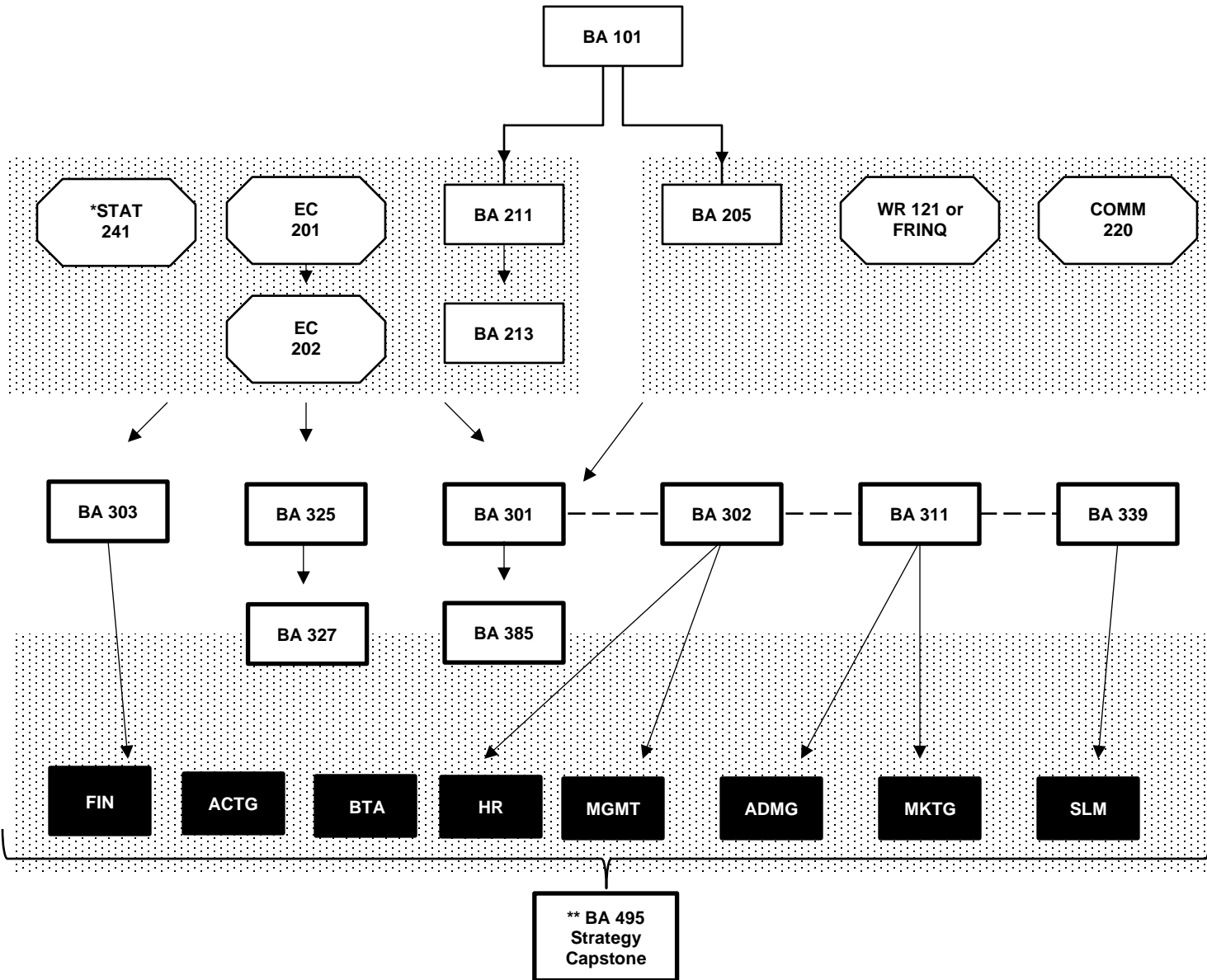


PORTLAND STATE UNIVERSITY – SCHOOL OF BUSINESS

Degree Curriculum Map

OPT-IN to The SB at pdx.edu/business/undergrad-degree-requirements
to be able to access 200, 300 or 400 level business classes



COURSE	PREREQUISITE
BA 205	BA 101
BA 211	BA 101
BA 213	BA 211
BA 301	EC 201, 202 STAT 241 or 243 BA 101, 205, 211, 213 COMM 220
BA 303, 325	STAT 241 or 243 EC 201, 202 BA 211, 213
BA 302, 311, 339	BA 301 – co/pre-req
BA 327	BA 325
BA 385	BA 301
BA 495	BA 301, 302, 303, 311, 325, 339, 385

* SIA 1243 can be substituted.

** Students take **BA 495** after completing all 300 level BA courses and after they complete 135 credits. **BA 495** should be taken in the final term before graduation.

A minimum of 82 business credits must be completed to graduate with a business degree. 82 Credits of Business does not include STATS, EC, WR or COMM.