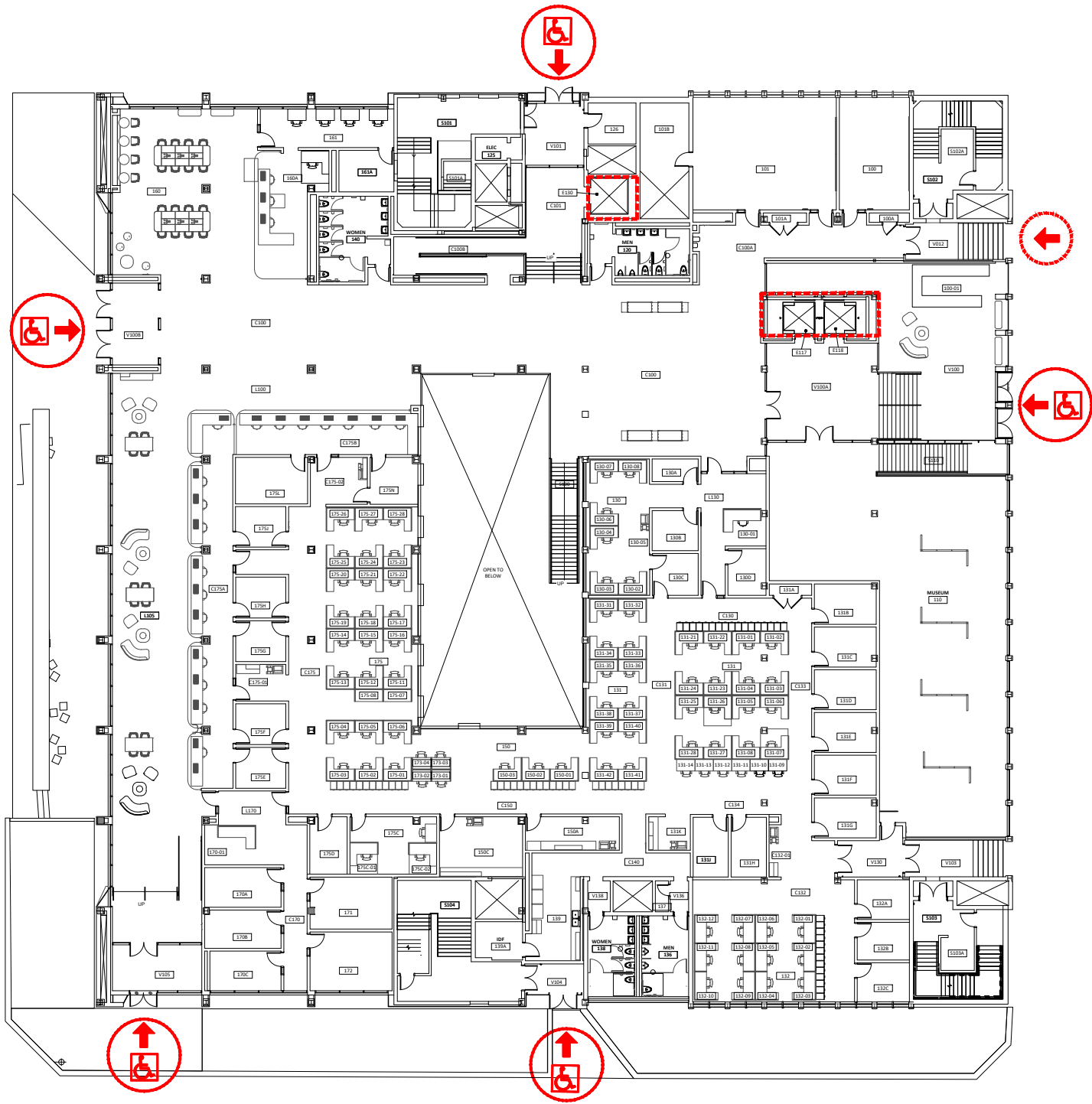


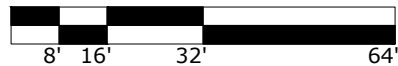
Fariborz Maseeh Hall (FMH)

MAIN ENTRANCE ON FIRST FLOOR

If you need assistance, or an accommodation to access an office or classroom please contact:
For Students - Disability Resource Center at (503) 725-4150
For Employees -Human Resources at (503) 725-4926



Scale
1/32" = 1'-0"



ELEVATOR ACCESS



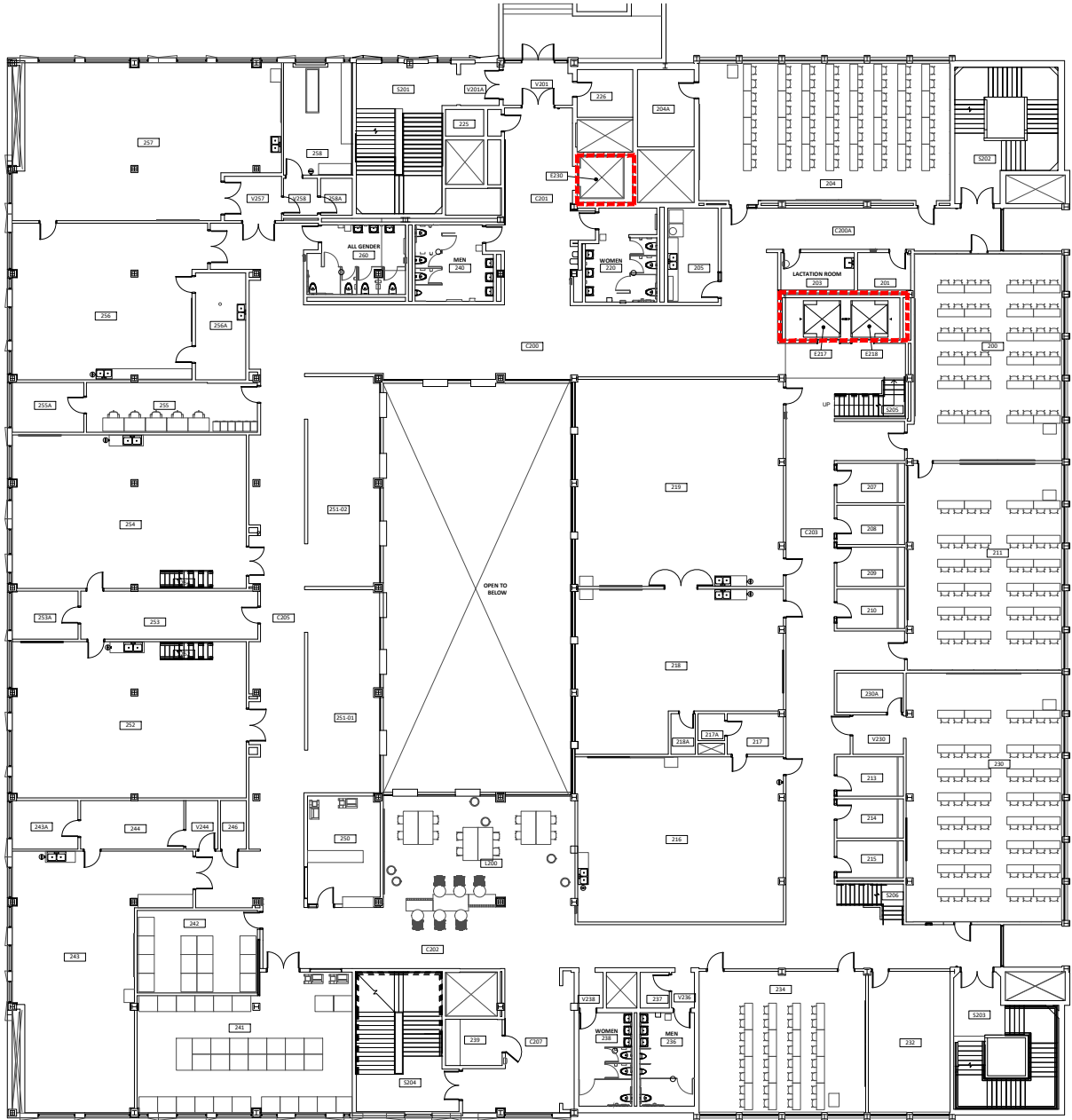
WHEELCHAIR ACCESS



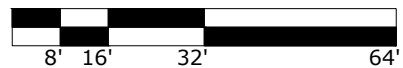
BUILDING ACCESS - NOT
WHEELCHAIR ACCESSIBLE




TO SMITH MEMORIAL STUDENT UNION



Scale
1/32" = 1'-0"



 ELEVATOR ACCESS

 WHEELCHAIR ACCESS

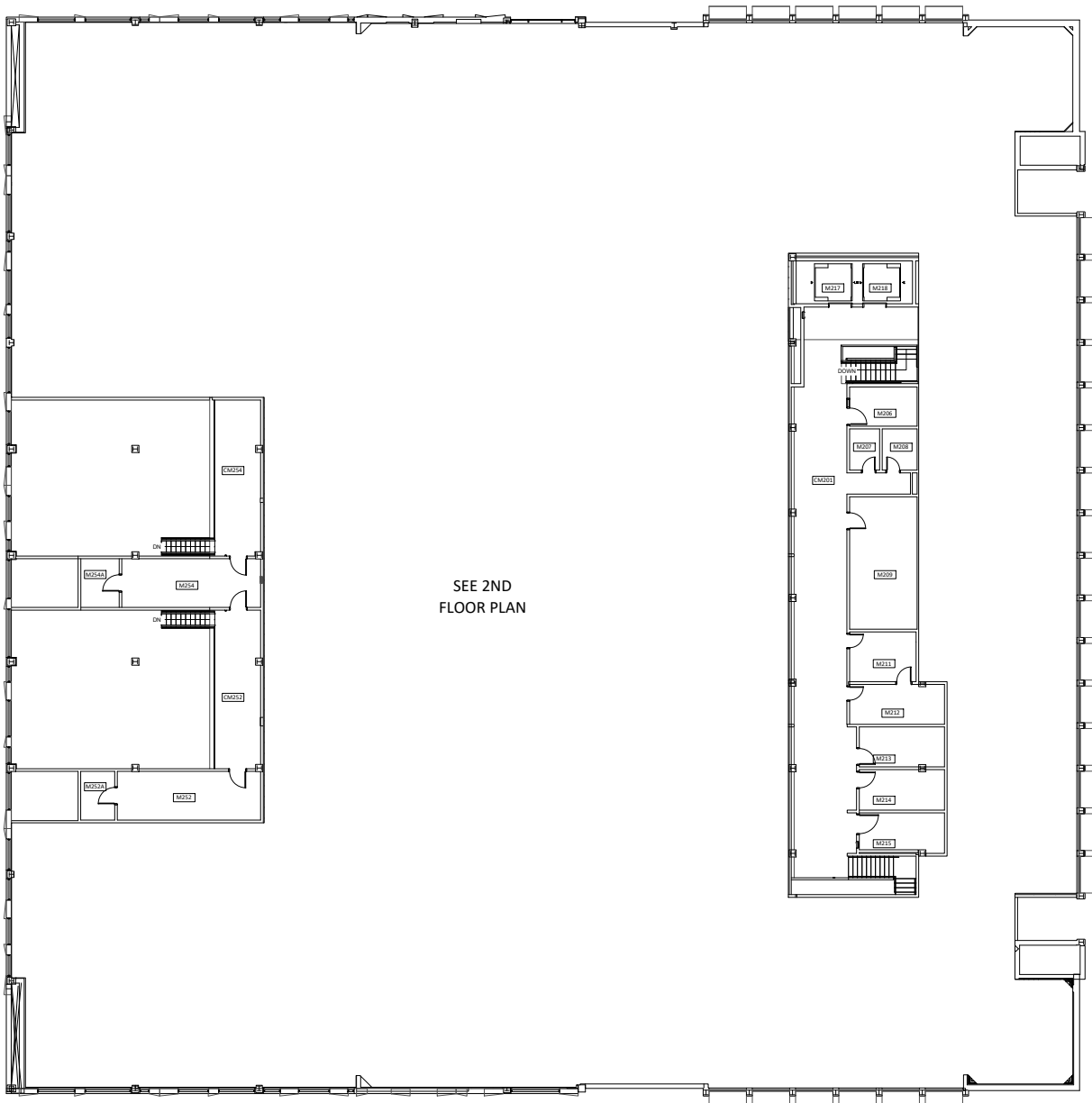
 BUILDING ACCESS - NOT WHEELCHAIR ACCESSIBLE



Second Floor
Fariborz Maseeh Hall
1855 SW Broadway, Portland, OR 97201

DRAWN BY:
ASL
DATE:
05/2020

199_A03



SEE 2ND
FLOOR PLAN

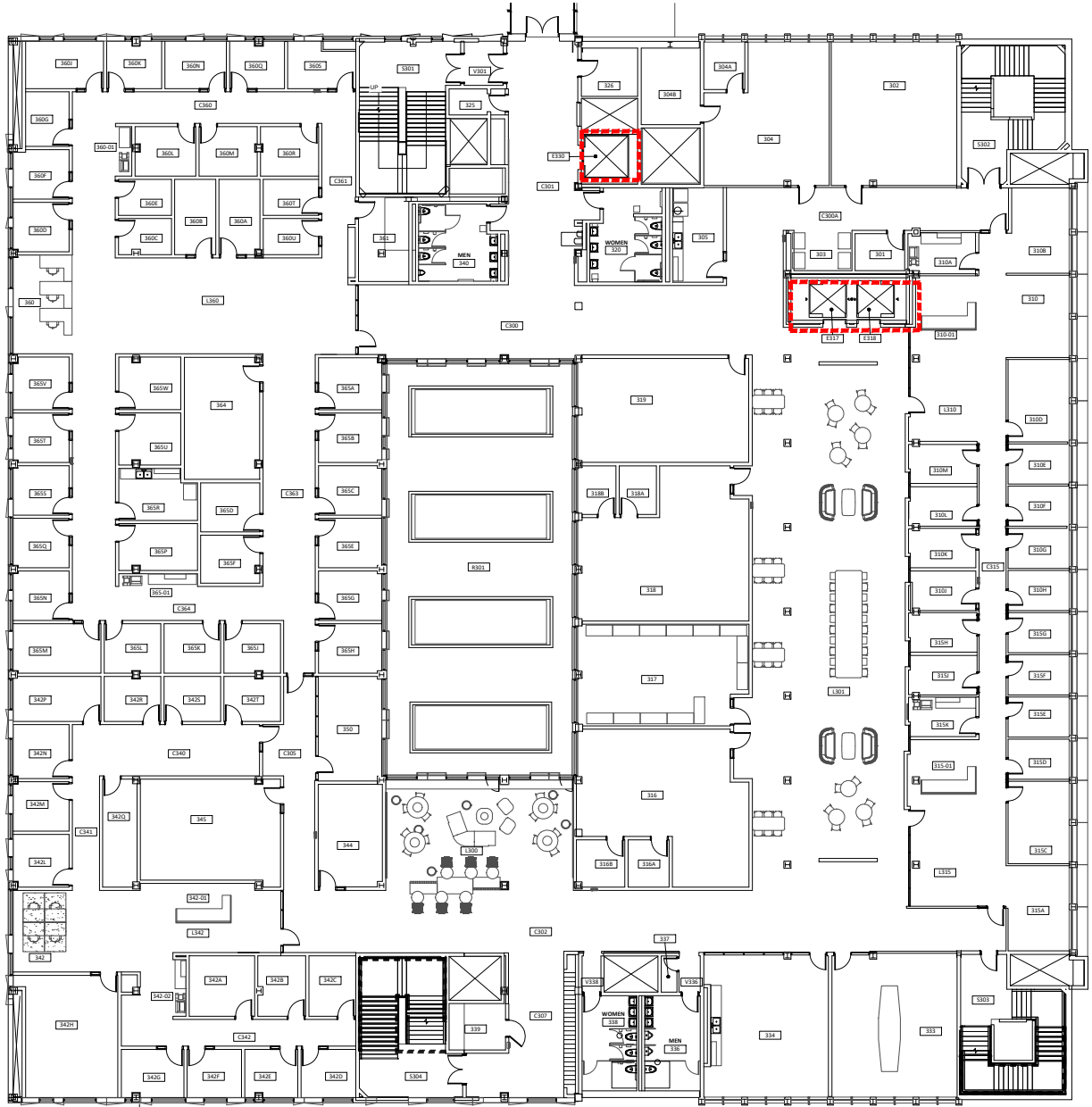
Scale
1/32" = 1'-0"



Second Floor Mezzanine
Fariborz Maseeh Hall
1855 SW Broadway, Portland, OR 97201

DRAWN BY:
ASL
DATE:
05/2020

199_A04



Scale

1/32" = 1'-0"



ELEVATOR ACCESS



WHEELCHAIR ACCESS



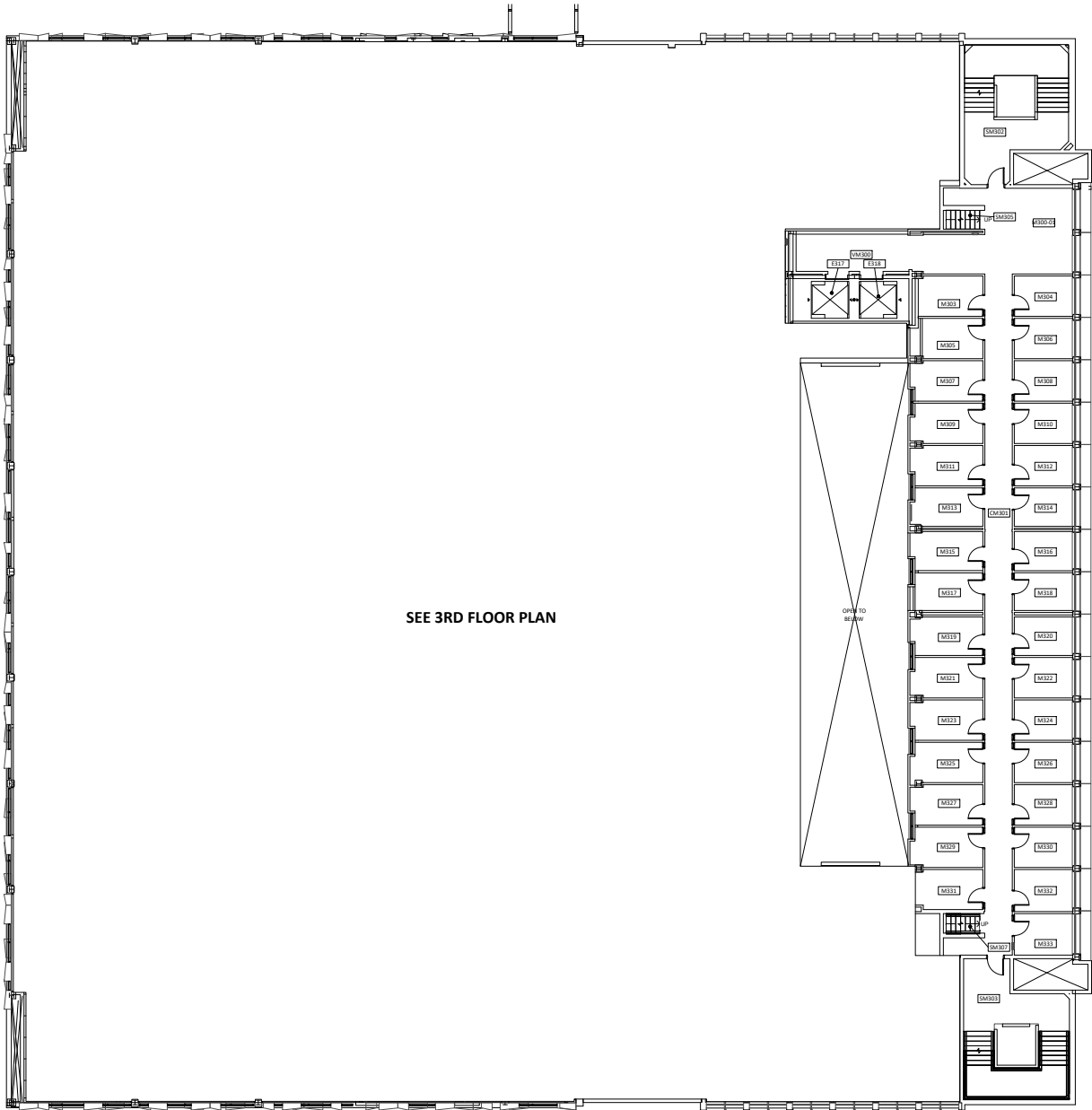
BUILDING ACCESS - NOT WHEELCHAIR ACCESSIBLE



Third Floor
Fariborz Maseeh Hall
1855 SW Broadway, Portland, OR 97201

DRAWN BY:
ASL
DATE:
05/2020

199_A05



SEE 3RD FLOOR PLAN

Scale
1/32" = 1'-0"



Third Floor Mezzanine
Fariborz Maseeh Hall
1855 SW Broadway, Portland, OR 97201

DRAWN BY:
ASL
DATE:
05/2020

199_A06



Scale
1/32" = 1'-0"



ELEVATOR ACCESS



WHEELCHAIR ACCESS



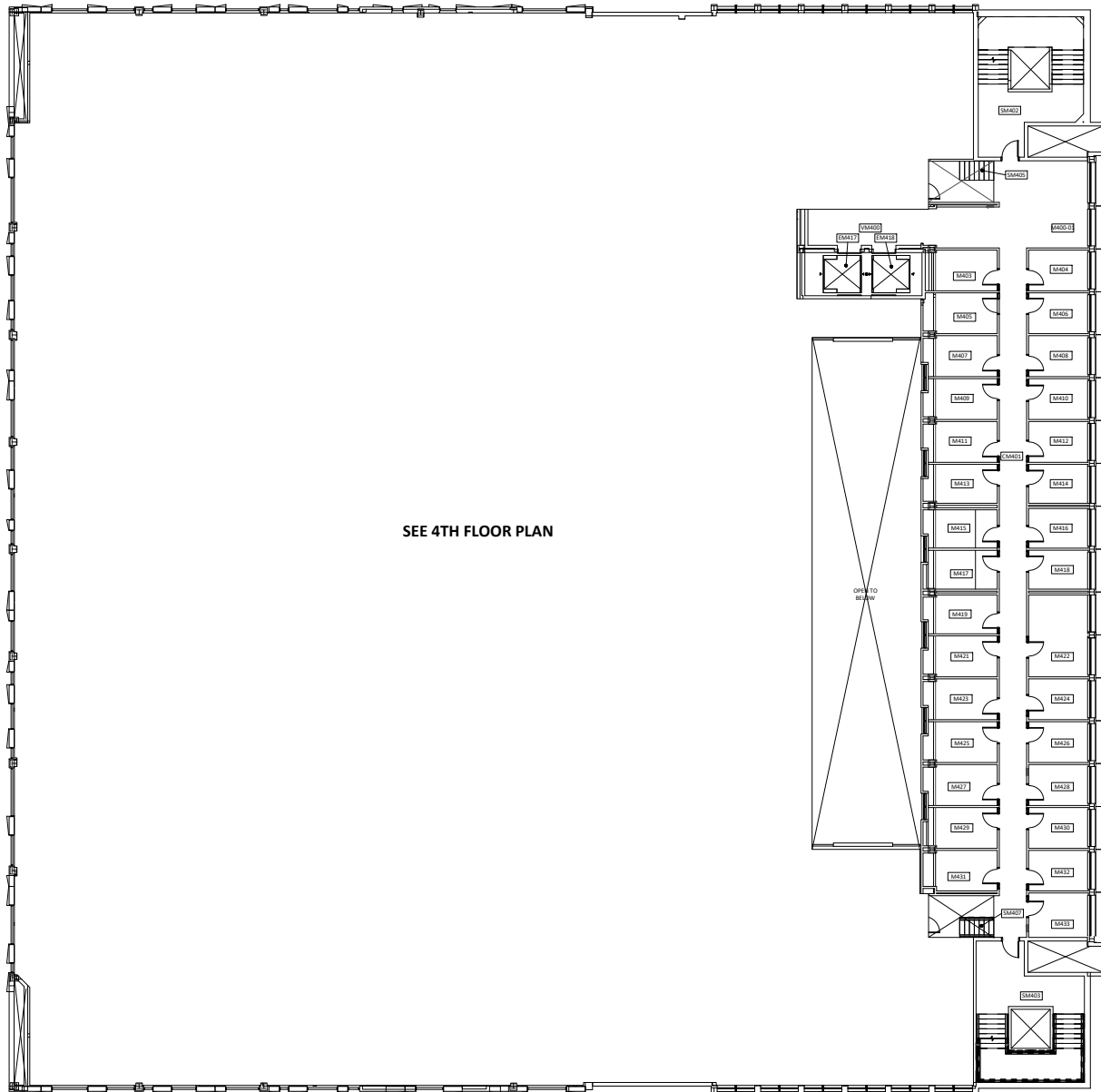
BUILDING ACCESS - NOT
WHEELCHAIR ACCESSIBLE



Fourth Floor
Fariborz Maseeh Hall
1855 SW Broadway, Portland, OR 97201

DRAWN BY:
ASL
DATE:
05/2020

199_A07



SEE 4TH FLOOR PLAN

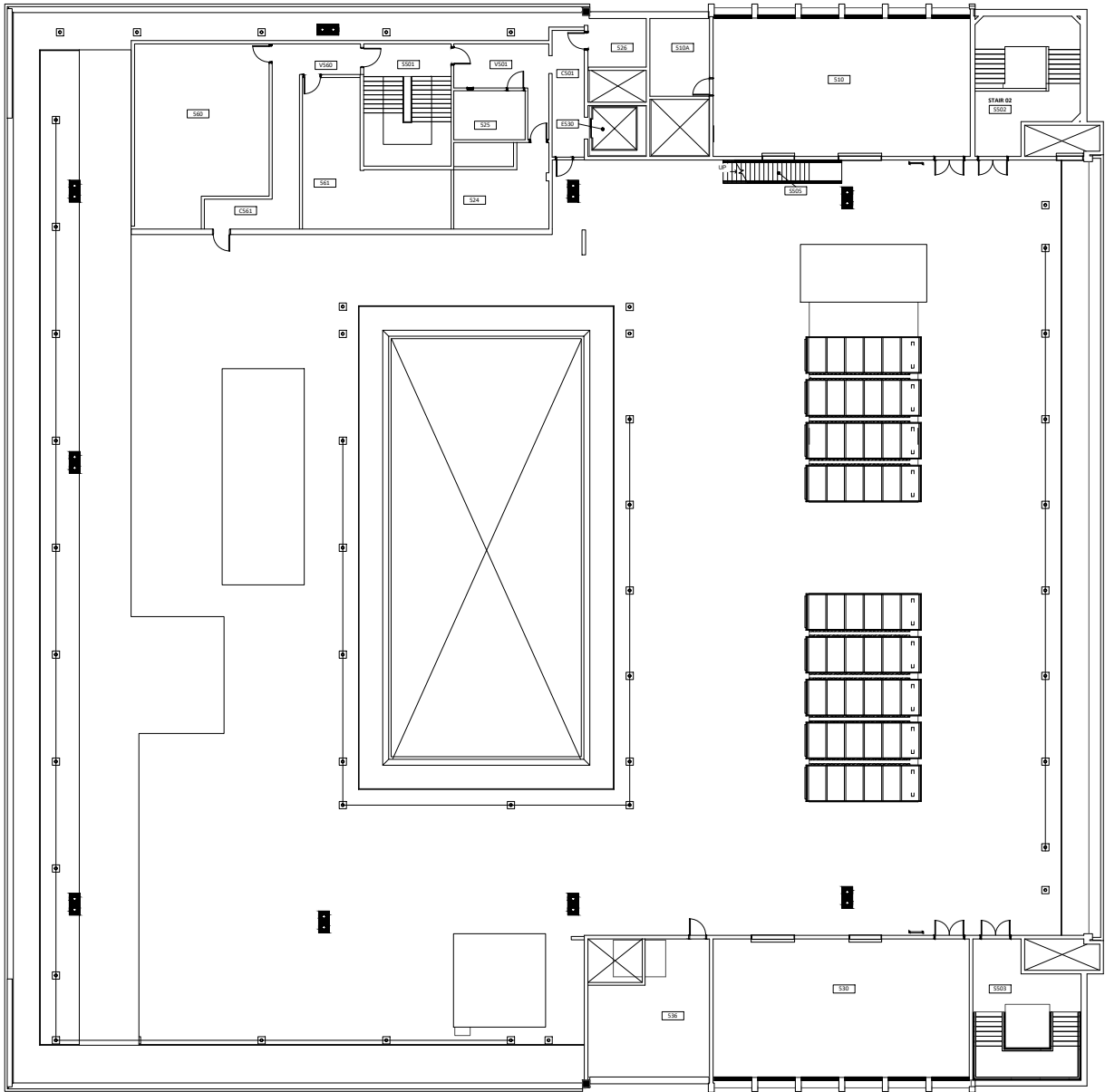
Scale
1/32" = 1'-0"



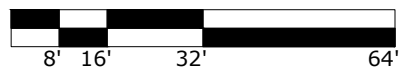
Fourth Floor Mezzanine
Fariborz Maseeh Hall
1855 SW Broadway, Portland, OR 97201

DRAWN BY:
ASL
DATE:
05/2020

199_A08



Scale
 1/32" = 1'-0"



Penthouse
 Fariborz Maseeh Hall
 1855 SW Broadway, Portland, OR 97201

DRAWN BY:
 ASL
 DATE:
 05/2020

199_A09