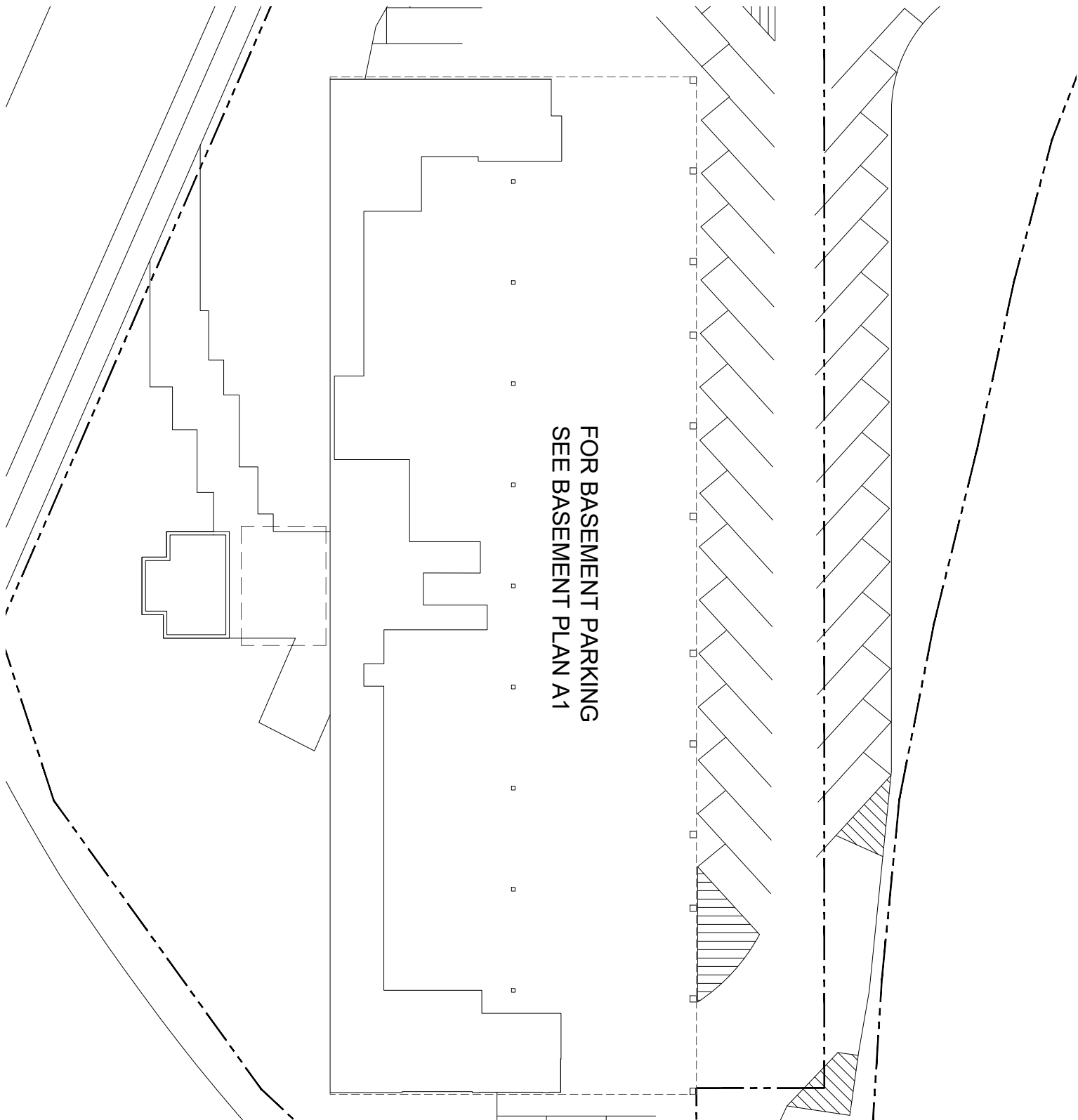


# Corbett Building (COR)

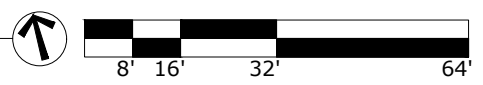
MAIN ENTRANCE ON FIRST FLOOR

If you need assistance, or an accommodation to access an office or classroom please contact:  
For Students - Disability Resource Center at (503) 725-4150      For Employees - Human Resources at (503) 725-4926



FOR BASEMENT PARKING  
SEE BASEMENT PLAN A1

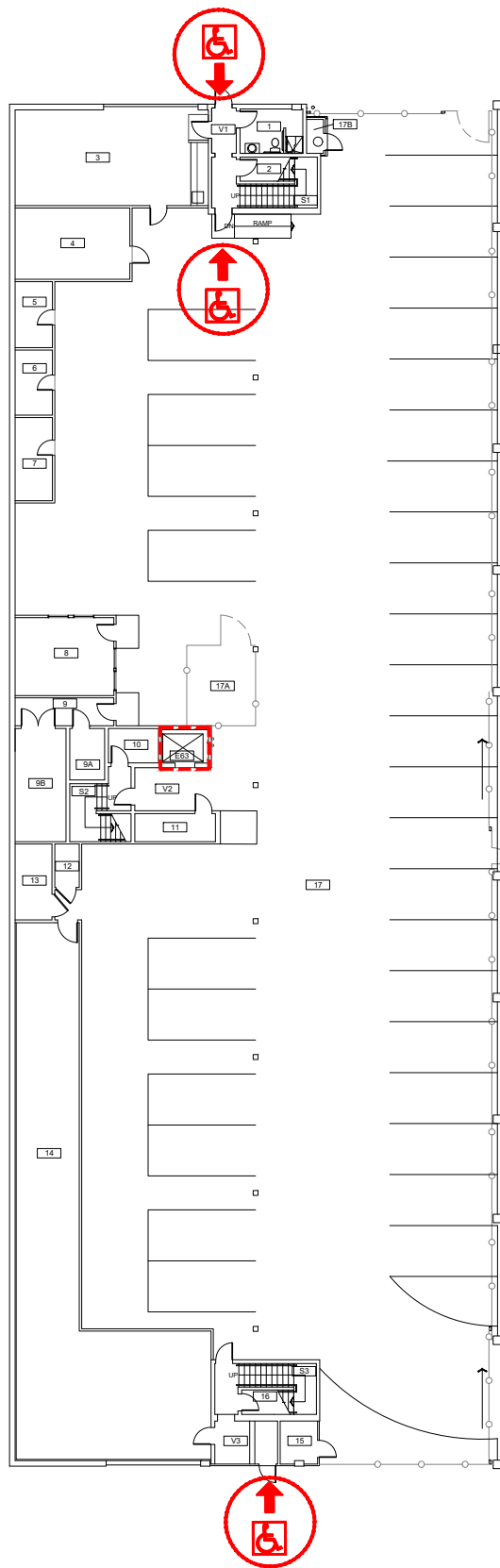
Scale  
1/32" = 1'-0"



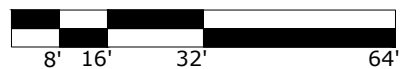
Site Parking  
Corbett Building  
2828 S Corbett Avenue, Portland, OR 97201

DRAWN BY:  
ASL  
DATE:  
08/2020

082\_A1



Scale  
1/32" = 1'-0"



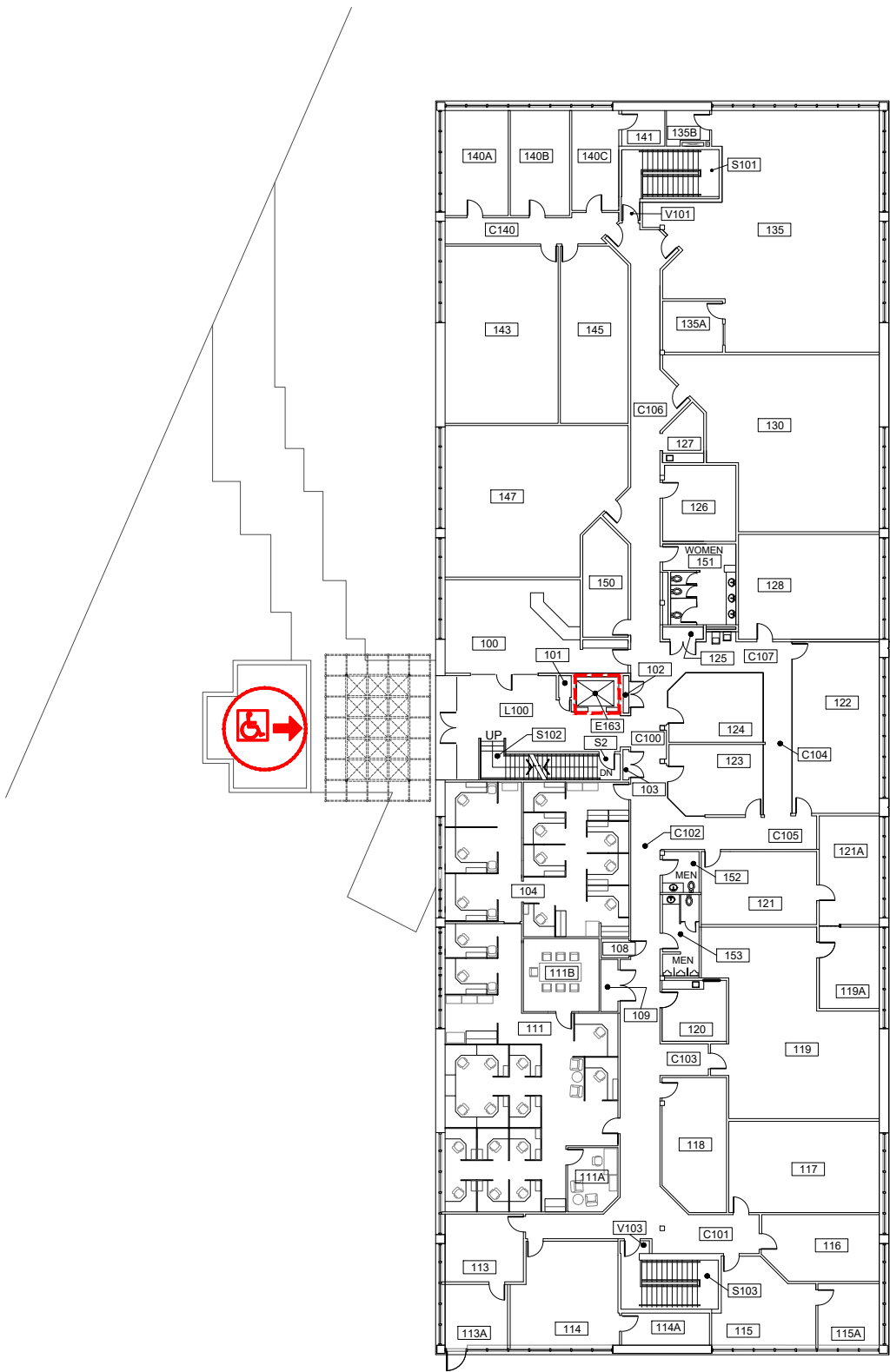
ELEVATOR ACCESS



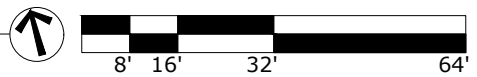
WHEELCHAIR ACCESS



BUILDING ACCESS - NOT  
WHEELCHAIR ACCESSIBLE



Scale  
1/32" = 1'-0"



- 
ELEVATOR ACCESS
- 
WHEELCHAIR ACCESS
- 
BUILDING ACCESS - NOT WHEELCHAIR ACCESSIBLE

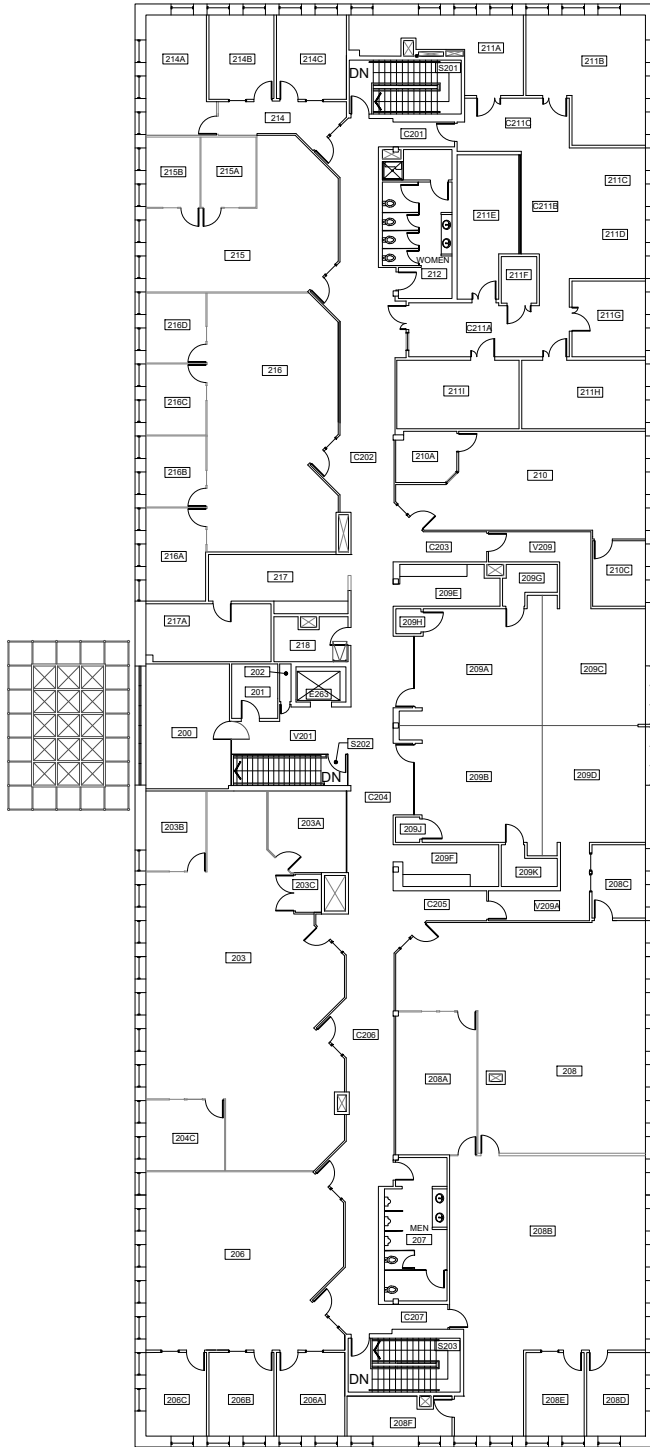


**First Floor**  
**Corbett Building**  
 2828 S Corbett Avenue, Portland, OR 97201

DRAWN BY:  
ASL

DATE:  
08/2020

082\_A3

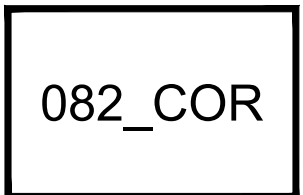


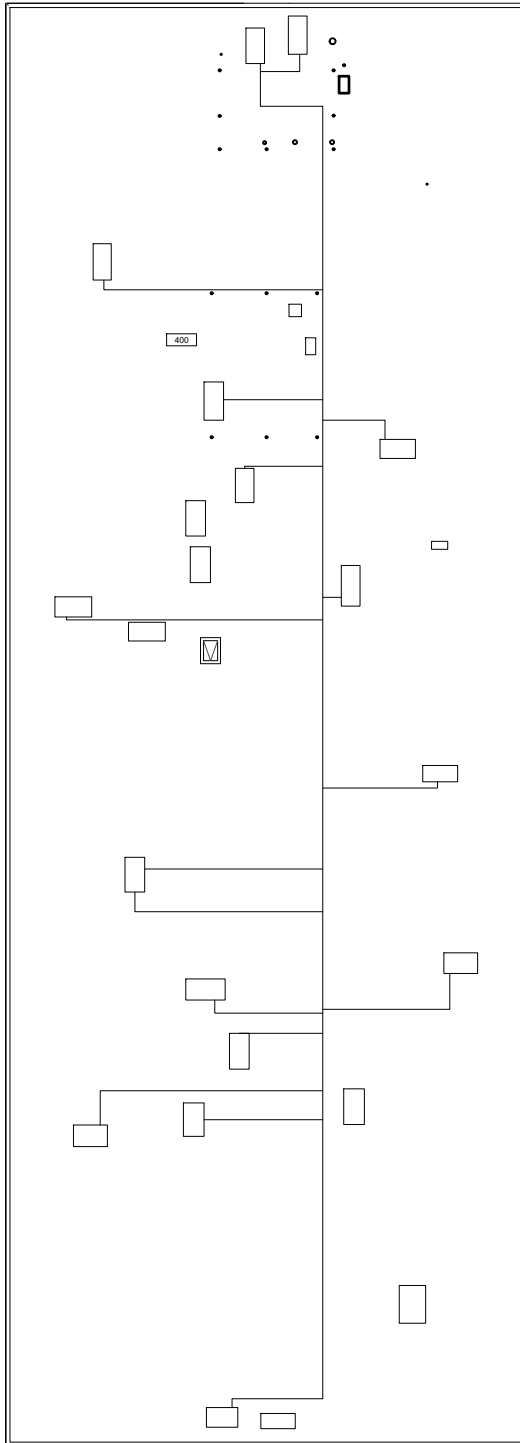
Scale  
 1/32" = 1'-0"



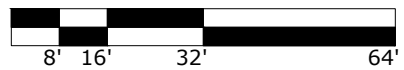
Second Floor  
 Corbett Building  
 2828 S Corbett Avenue, Portland, OR 97201

DRAWN BY:  
 HH  
 DATE:  
 11/2020





Scale  
 $1/32" = 1'-0"$



Roof  
 Corbett Building  
 2828 S Corbett Avenue, Portland, OR 97201

DRAWN BY:  
 ASL  
 DATE:  
 08/2020

082\_A5