




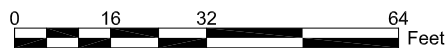


STANDARD LAYER REPORT		AREA	QTY
	Building Services	178	1
	Circulation	825	3
	Mechanical Space	3,891	6
	Net Assignable Space	809	2
	Vertical Penetrations	169	3
TOTAL:		5,872	15
Floor Gross:		6,443	

STANDARD SPACE REPORT

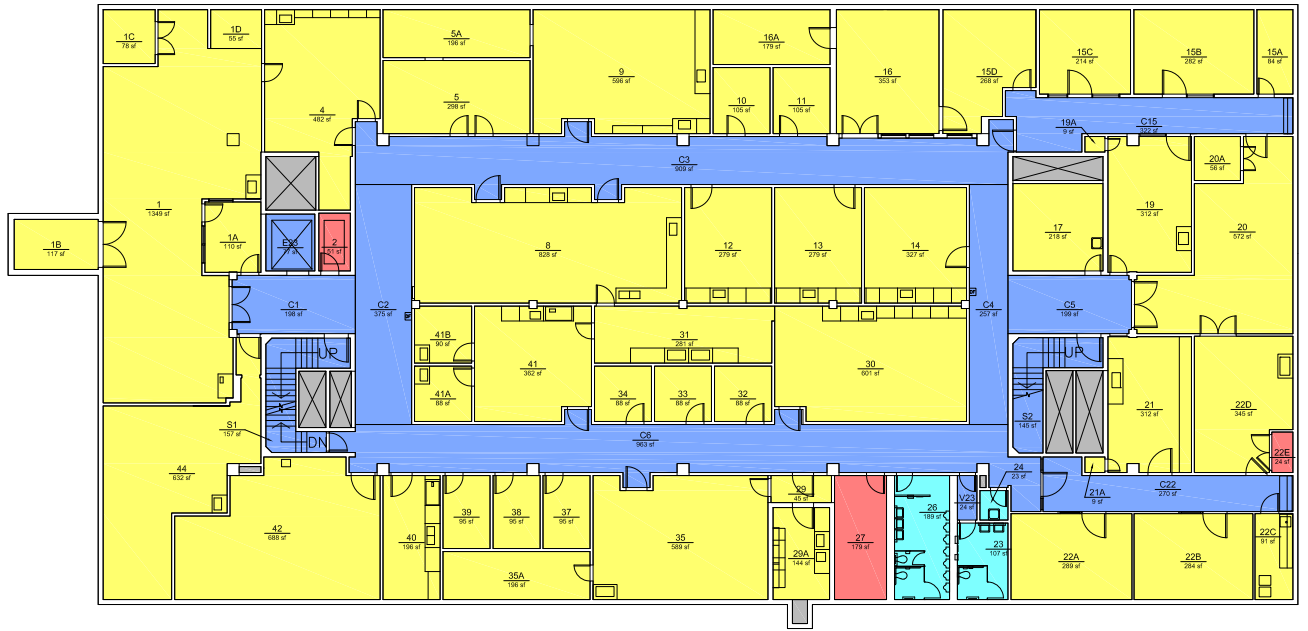







SCIENCE BUILDING ONE

Sub-Basement Floor Plan
1025 SW Mill Street, Portland, Oregon 97201

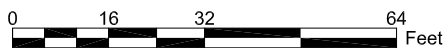
Print Date:
Last Modified Date: 10/2014





STANDARD LAYER REPORT		
	AREA	QTY
	Building Services	315 3
	Circulation	3,896 12
	Mechanical Space	254 3
	Net Assignable Space	13,542 50
	Vertical Penetrators	350 9
	TOTAL:	18,361 77
	Floor Gross:	20,172

STANDARD SPACE REPORT

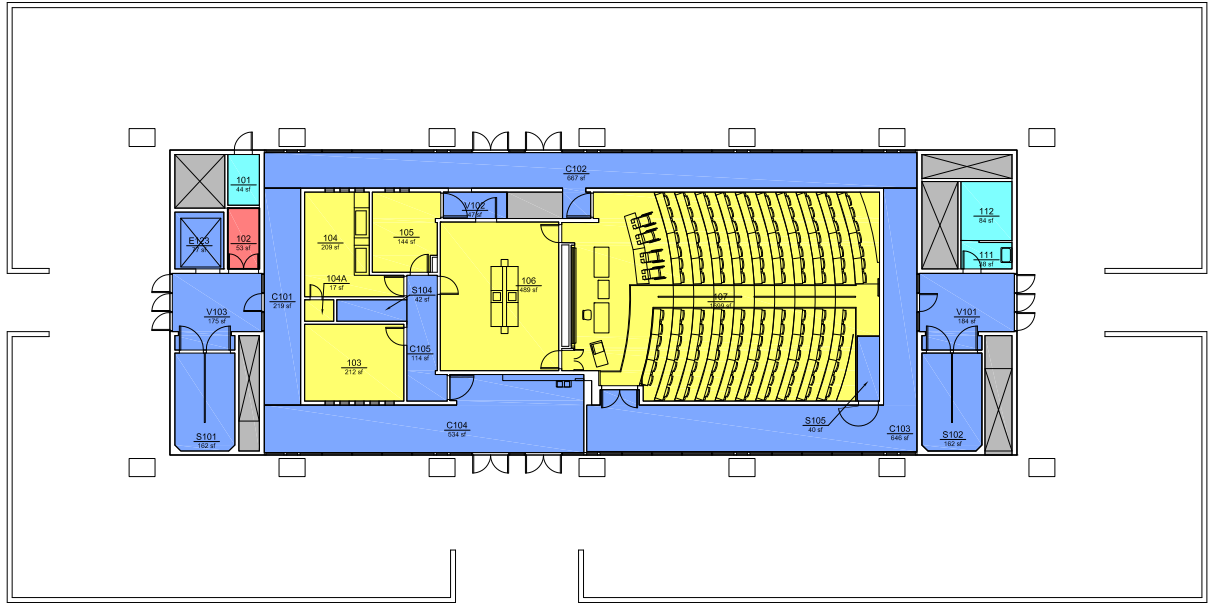


SCIENCE BUILDING ONE

Basement Floor Plan
 1025 SW Mill Street, Portland, Oregon 97201
 Print Date:
 Last Modified Date: 10/2014

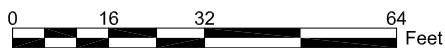


Campus Planning Office
<http://www.pdx.edu/planning-sustainability>



STANDARD LAYER REPORT		
	AREA	QTY
■ Building Services	166	3
■ Circulation	3,069	13
■ Mechanical Space	53	1
■ Net Assignable Space	2,770	6
■ Vertical Penetrations	418	6
TOTAL:	6,476	29
Floor Gross:	7,178	

STANDARD SPACE REPORT



SCIENCE BUILDING ONE First Floor Plan

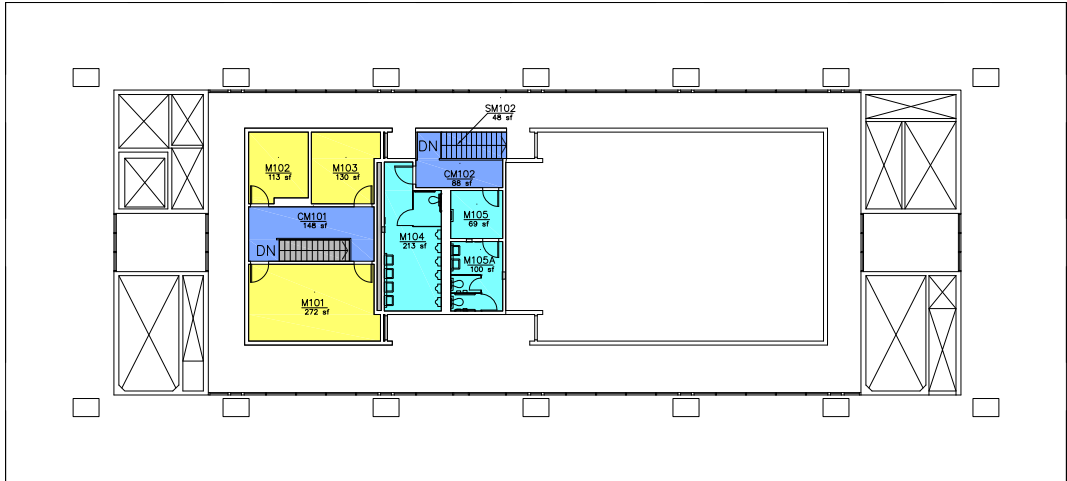
1025 SW Mill Street, Portland, Oregon 97201





Print Date:

Last Modified Date: 10/2014

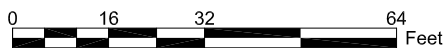


Campus Planning Office
<http://www.pdx.edu/planning-sustainability>



STANDARD LAYER REPORT		
	AREA	QTY
	Building Services	382 3
	Circulation	284 3
	Net Assignable Space	515 3
	Vertical Penetrations	61 4
TOTAL:		1,242 13
Floor Gross:		1,452

STANDARD SPACE REPORT



SCIENCE BUILDING ONE First Floor Mezzanine Plan

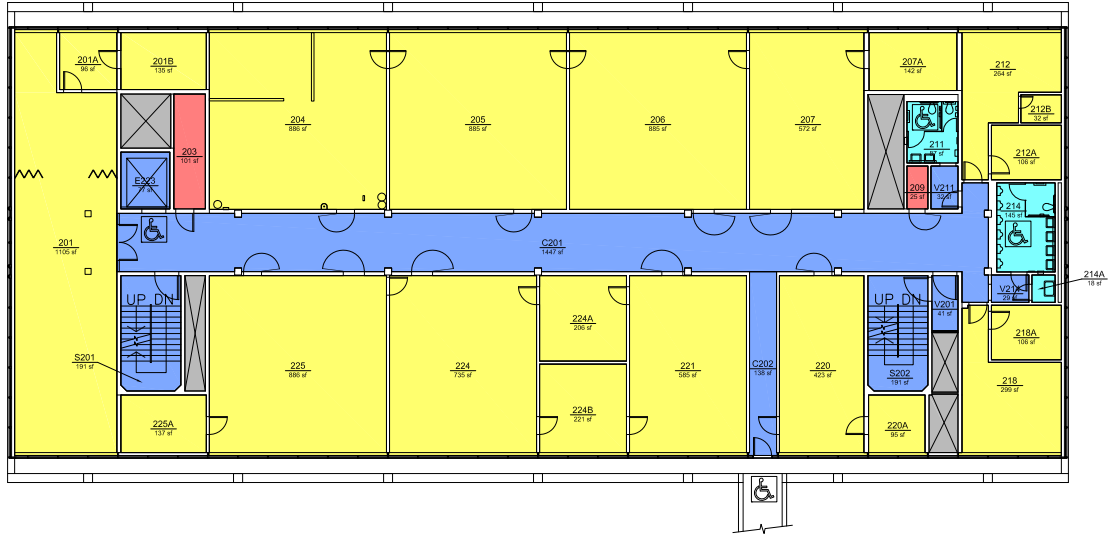
1025 SW Mill Street, Portland, Oregon 97201

Print Date: 10/2010

Last Modified Date: 10/2010

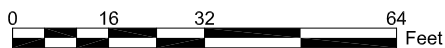


Campus Planning Office
<http://www.pdx.edu/planning-sustainability>



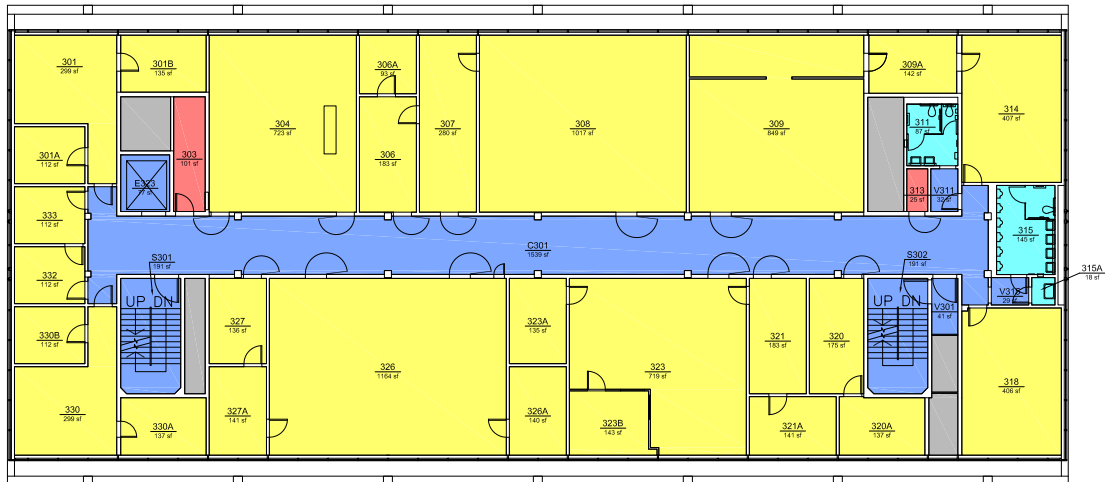
STANDARD LAYER REPORT		
	AREA	QTY
Building Services	532	7
Circulation	4,260	15
Mechanical Space	252	4
Net Assignable Space	16,266	39
Vertical Penetrations	345	5
TOTAL:	21,655	70
Floor Gross:	12,639	






STANDARD SPACE REPORT



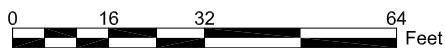
SCIENCE BUILDING ONE
Second Floor Plan
 1025 SW Mill Street, Portland, Oregon 97201
 Print Date:
 Last Modified Date: 10/2014





STANDARD LAYER REPORT		
	AREA	QTY
	Building Services	290 3
	Circulation	2,100 7
	Mechanical Space	126 2
	Net Assignable Space	8,632 28
	Vertical Penetrations	346 5
TOTAL:		11,454 45
Floor Gross:		12,659

STANDARD SPACE REPORT



SCIENCE BUILDING ONE

Third Floor Plan

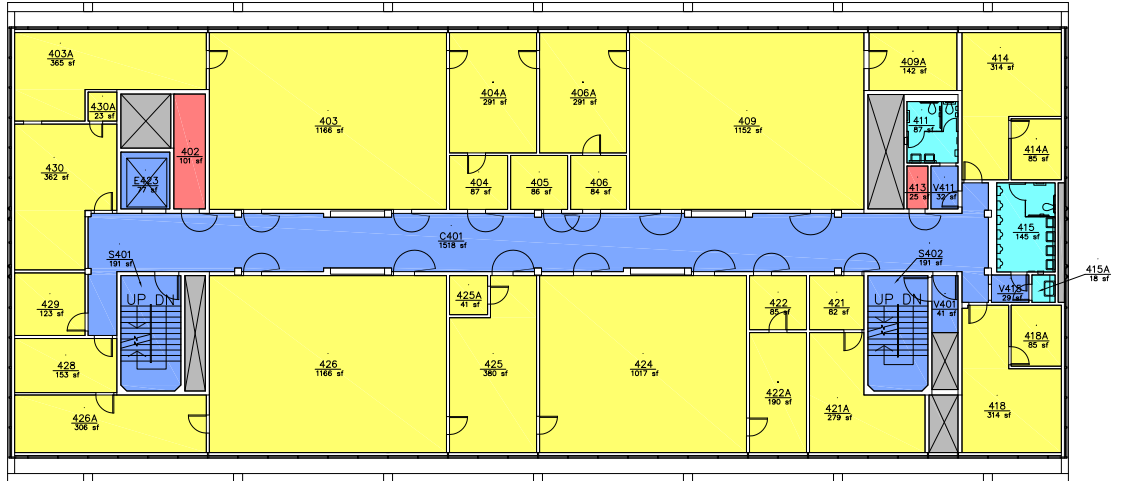
1025 SW Mill Street, Portland, Oregon 97201

Print Date:

Last Modified Date: 10/20104

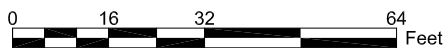


Campus Planning Office
<http://www.pdx.edu/planning-sustainability>



STANDARD LAYER REPORT		
	AREA	QTY
■ Building Services	250	3
■ Circulation	2,079	7
■ Mechanical Space	126	2
■ Net Assignable Space	8,669	26
■ Vertical Penetrations	363	6
TOTAL:	11,487	44
Floor Gross:	12,639	

STANDARD SPACE REPORT



SCIENCE BUILDING ONE Fourth Floor Plan

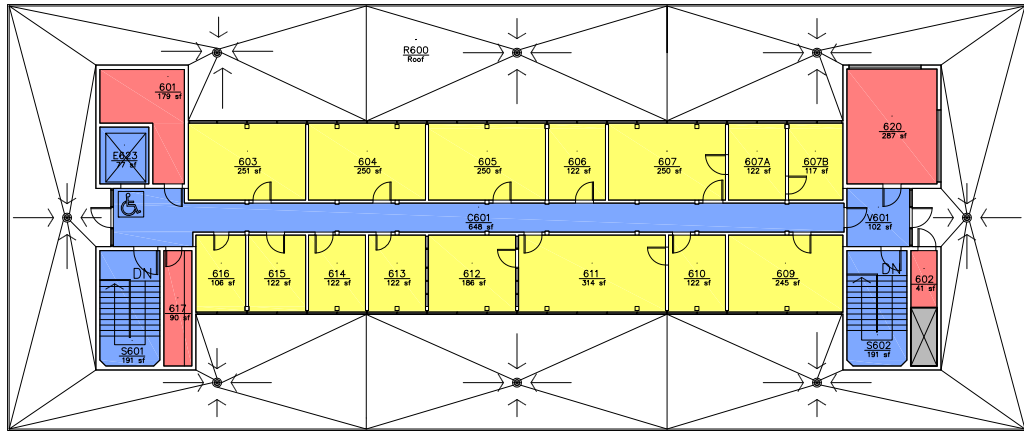
1025 SW Mill Street, Portland, Oregon 97201

Print Date:

Last Modified Date: 10/2014

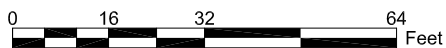


Campus Planning Office
<http://www.pdx.edu/planning-sustainability>



STANDARD LAYER REPORT		
	AREA	QTY
Circulation	1,209	5
Mechanical Space	597	4
Net Assignable Space	2,701	15
Vertical Penetrations	42	1
TOTAL:	4,549	25
Floor Gross:	5,083	

STANDARD SPACE REPORT



SCIENCE BUILDING ONE Sixth Floor Plan

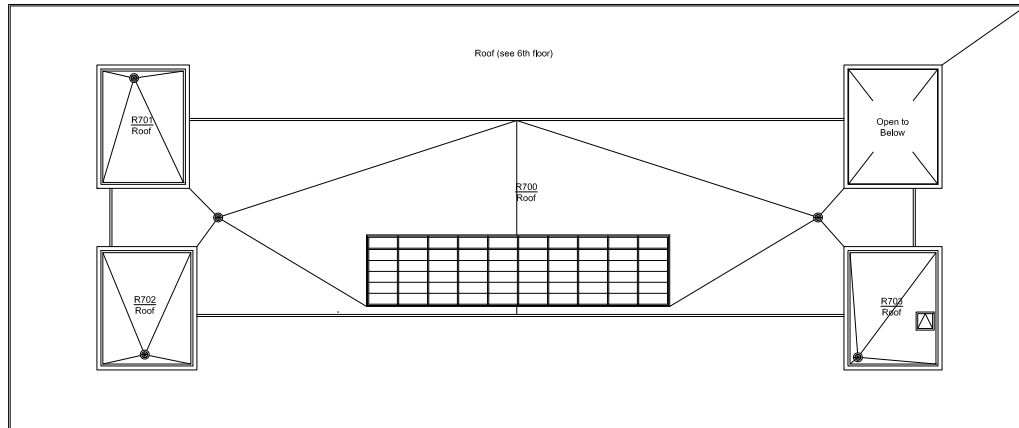
1025 SW Mill Street, Portland, Oregon 97201

Print Date:

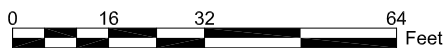
Last Modified Date: 10/2014



Campus Planning Office
<http://www.pdx.edu/planning-sustainability>



STANDARD SPACE REPORT



SCIENCE BUILDING ONE Roof Plan

1025 SW Mill Street, Portland, Oregon 97201

Print Date:

Last Modified Date: 10/2014



Campus Planning Office
<http://www.pdx.edu/planning-sustainability>