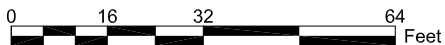


STANDARD LAYER REPORT

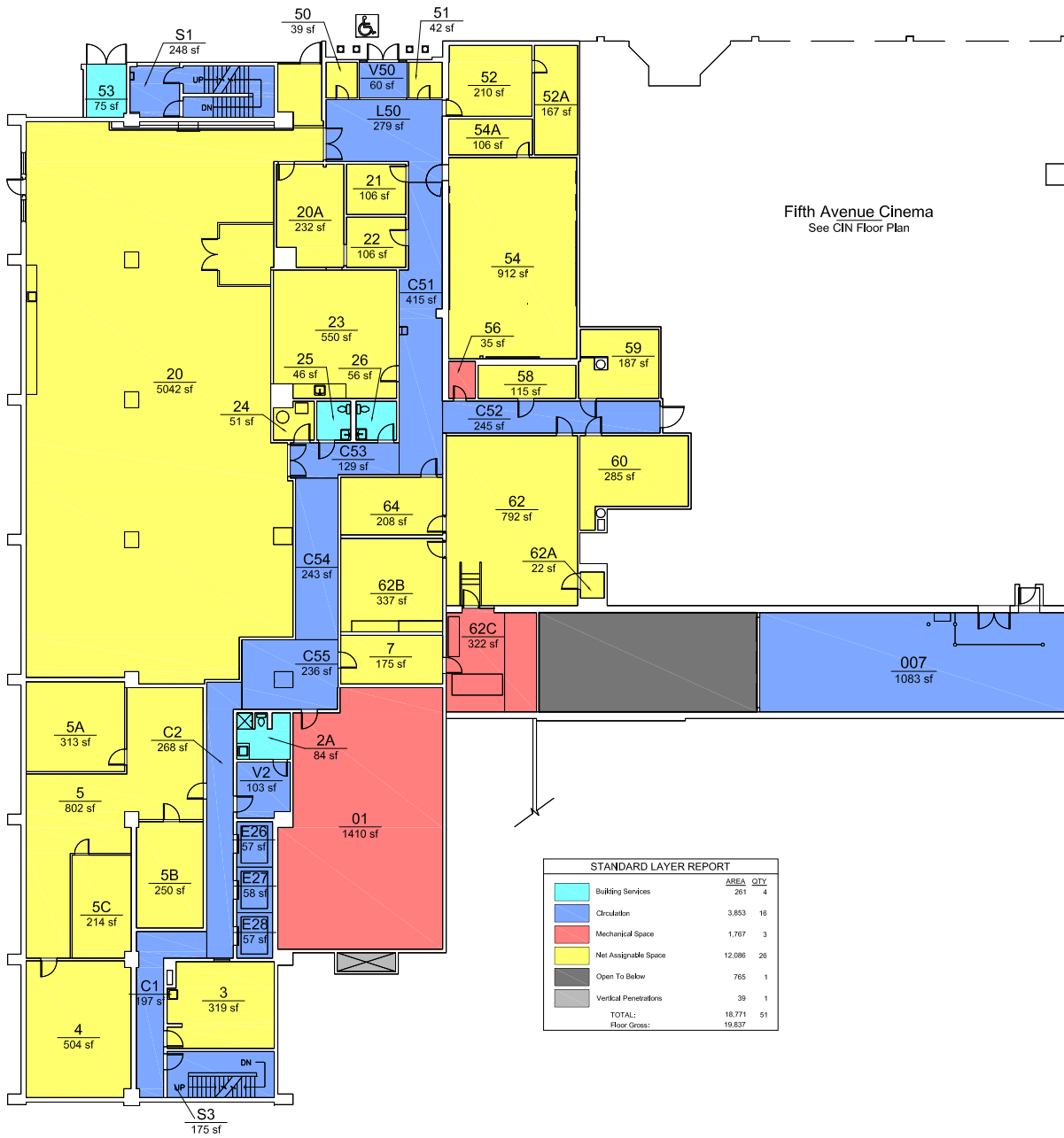
	AREA	QTY
■ Circulation	1,739	5
■ Mechanical Space	2,253	6
■ Net Assignable Space	22,414	3
■ Open To Below	1,075	1
■ Vertical Penetrations	215	3
TOTAL:	27,696	18
Floor Gross:	28,061	

STANDARD SPACE REPORT



ONDINE

Sub-Basement Floor Plan
 1912 SW 6th Avenue, Portland, Oregon 97201-5264
 Print Date:
 Last Modified Date: 05/2015



Fifth Avenue Cinema
See CIN Floor Plan

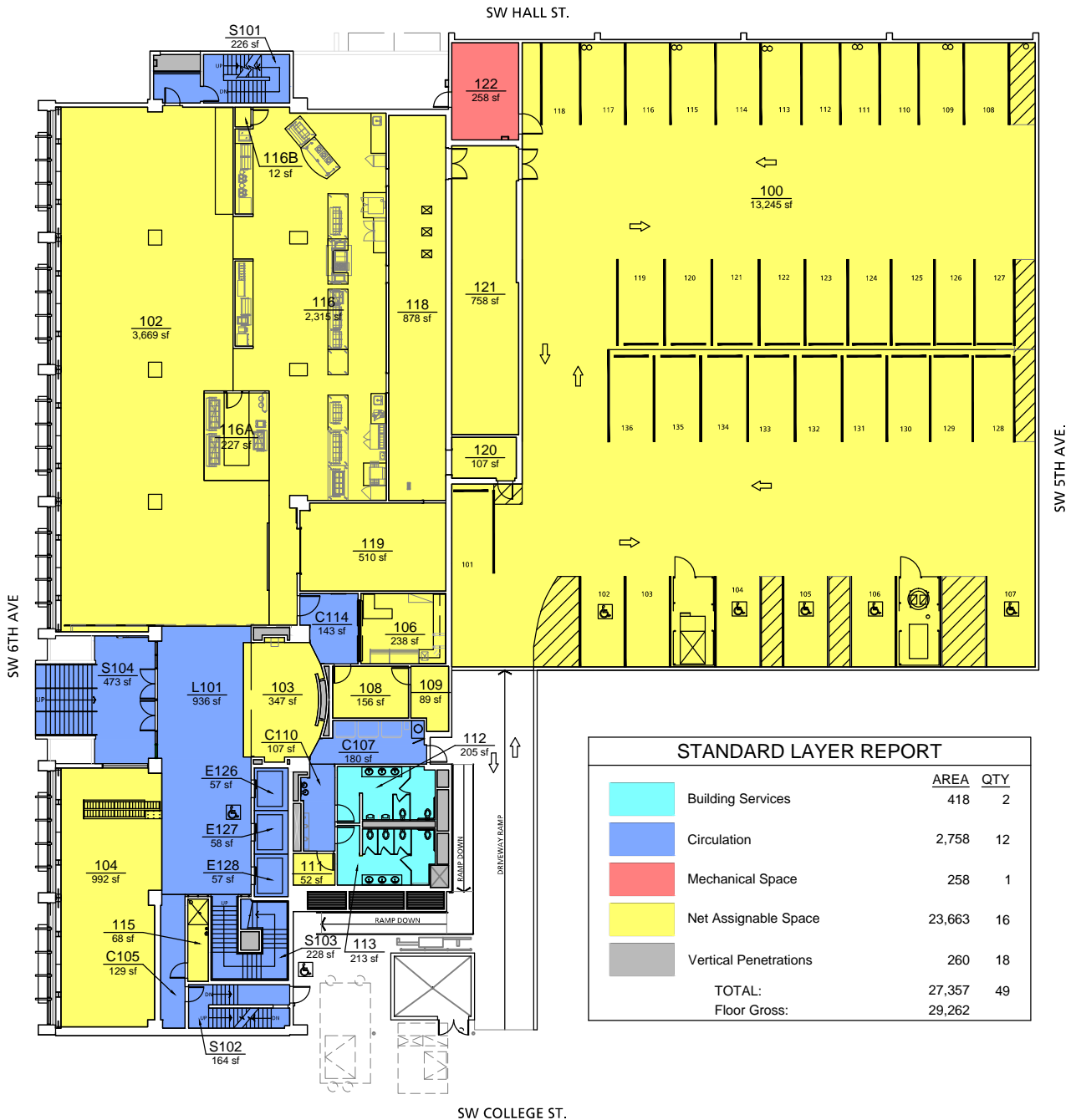
STANDARD LAYER REPORT		
	AREA	QTY
Building Services	261	4
Circulation Space	3,853	16
Mechanical Space	1,767	3
Net Assignable Space	12,086	26
Open To Below	765	1
Vertical Penetrators	39	1
TOTAL:	18,771	51
Floor Gross:	19,637	



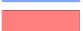


STANDARD SPACE REPORT



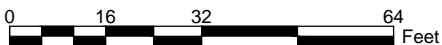
ONDINE

Basement Floor Plan
1912 SW 6th Avenue, Portland, Oregon 97201-5264
Print Date:
Last Modified Date: 05/2015

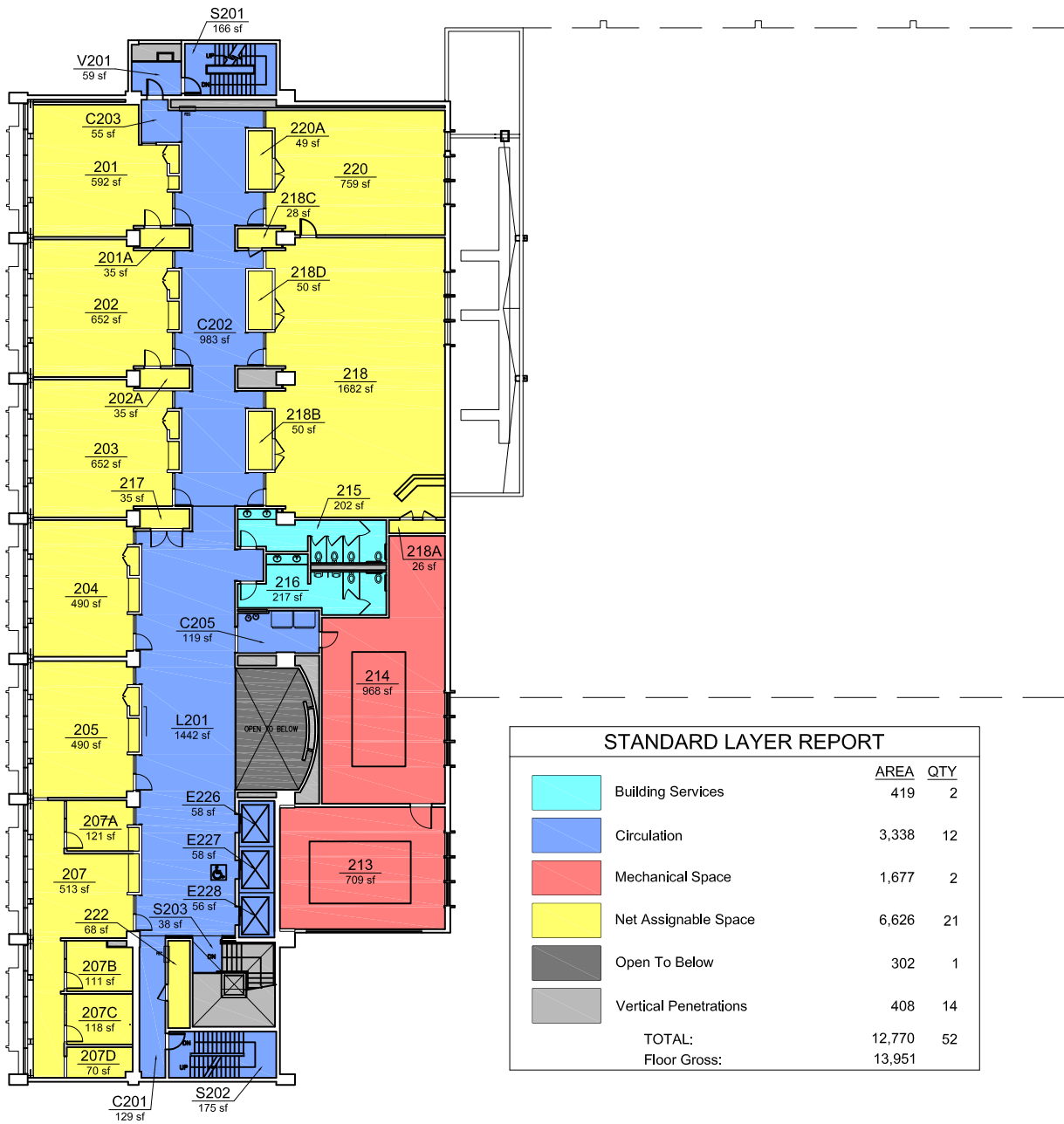


STANDARD LAYER REPORT		
	AREA	QTY
	Building Services	418 2
	Circulation	2,758 12
	Mechanical Space	258 1
	Net Assignable Space	23,663 16
	Vertical Penetrations	260 18
TOTAL:		27,357 49
Floor Gross:		29,262

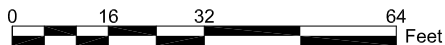
STANDARD SPACE REPORT



ONDINE
First Floor Plan
 1912 SW 6th Avenue, Portland, Oregon 97201-5264
 Print Date:
 Last Modified Date: 06/2018



STANDARD SPACE REPORT



ONDINE

Second Floor Plan

1912 SW 6th Avenue, Portland, Oregon 97201-5264

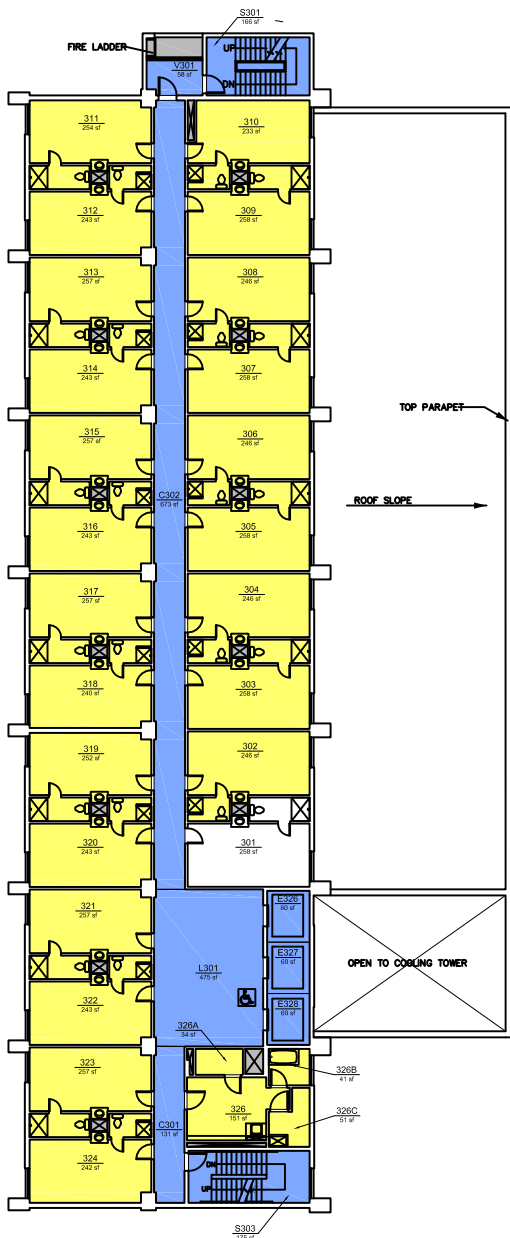
Print Date: 2011




Last Modified Date: 05/2015



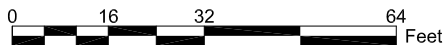
Portland State
UNIVERSITY

Campus Planning Office
<http://www.pdx.edu/planning-sustainability>



STANDARD LAYER REPORT			
		AREA	QTY
	Circulation	1,858	9
	Net Assignable Space	6,014	27
	Vertical Penetrations	128	18
TOTAL:		8,000	54
Floor Gross:		9,324	

STANDARD SPACE REPORT



ONDINE

Third Floor Plan

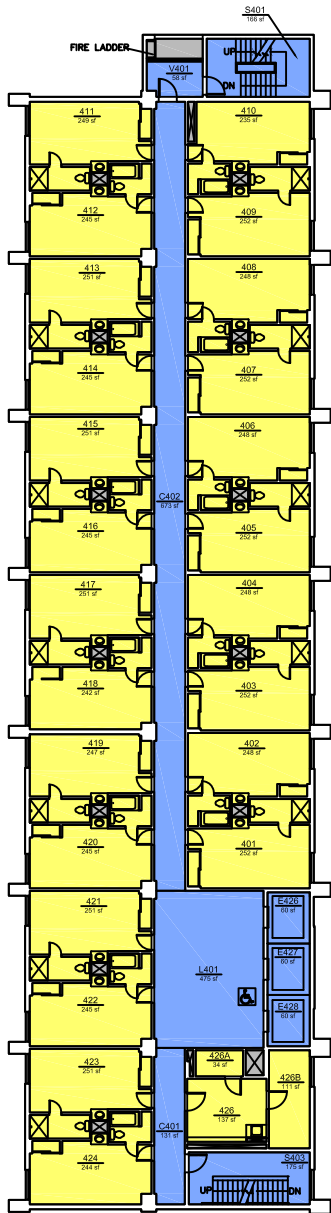
1912 SW 6th Avenue, Portland, Oregon 97201-5264




Print Date: 2011

Last Modified Date: 10/2011



Campus Planning Office
<http://www.pdx.edu/planning-sustainability>



STANDARD LAYER REPORT		
	AREA	QTY
	Circulation	1,858 9
	Net Assignable Space	6,231 27
	Vertical Penetrations	128 18
TOTAL:		8,217 54
Floor Gross:		9,324

STANDARD SPACE REPORT



ONDINE

Fourth Floor Plan

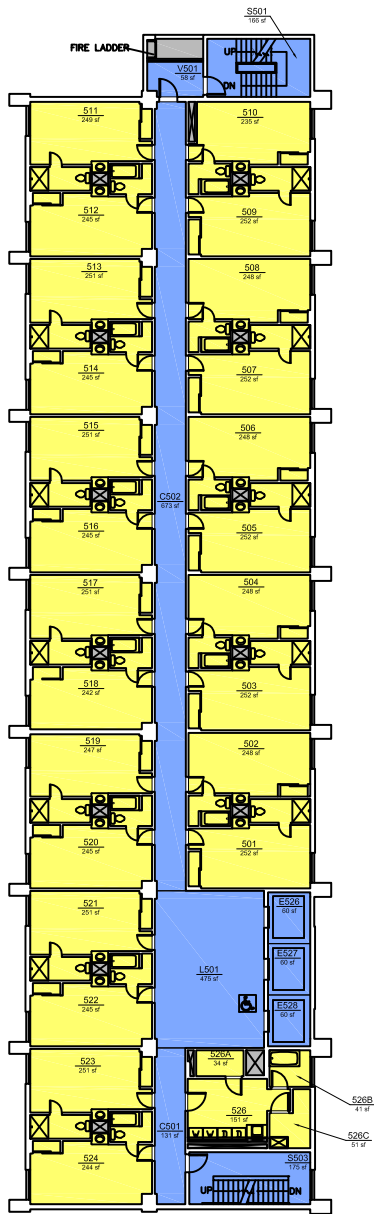
1912 SW 6th Avenue, Portland, Oregon 97201-5264




Print Date: 2011

Last Modified Date: 10/2011

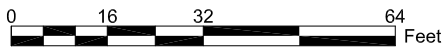


Campus Planning Office
<http://www.pdx.edu/planning-sustainability>



STANDARD LAYER REPORT			
		AREA	QTY
	Circulation	1,858	9
	Net Assignable Space	6,226	28
	Vertical Penetrations	128	18
TOTAL:		8,212	55
Floor Gross:		9,324	

STANDARD SPACE REPORT



ONDINE

Fifth Floor Plan

1912 SW 6th Avenue, Portland, Oregon 97201-5264

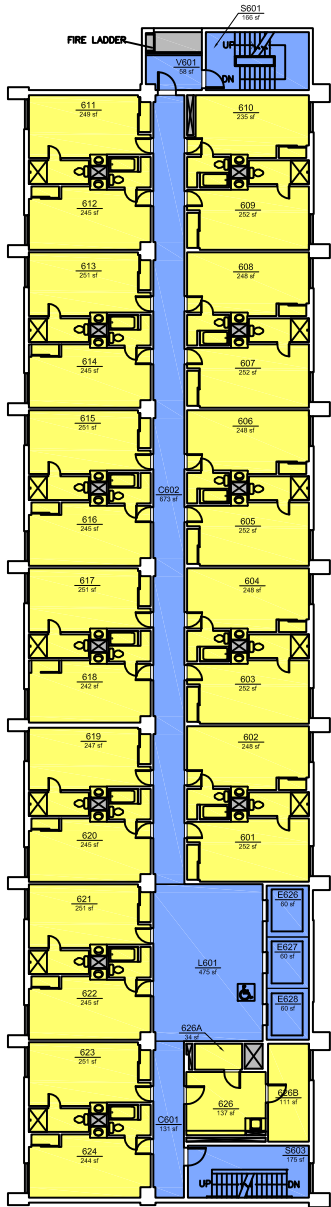
Print Date: 2011

Last Modified Date: 10/2011



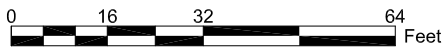
Portland State
UNIVERSITY

Campus Planning Office
<http://www.pdx.edu/planning-sustainability>



STANDARD LAYER REPORT			
		AREA	QTY
	Circulation	1,858	9
	Net Assignable Space	6,231	27
	Vertical Penetrations	128	18
TOTAL:		8,217	54
Floor Gross:		9,324	

STANDARD SPACE REPORT



ONDINE

Sixth Floor Plan

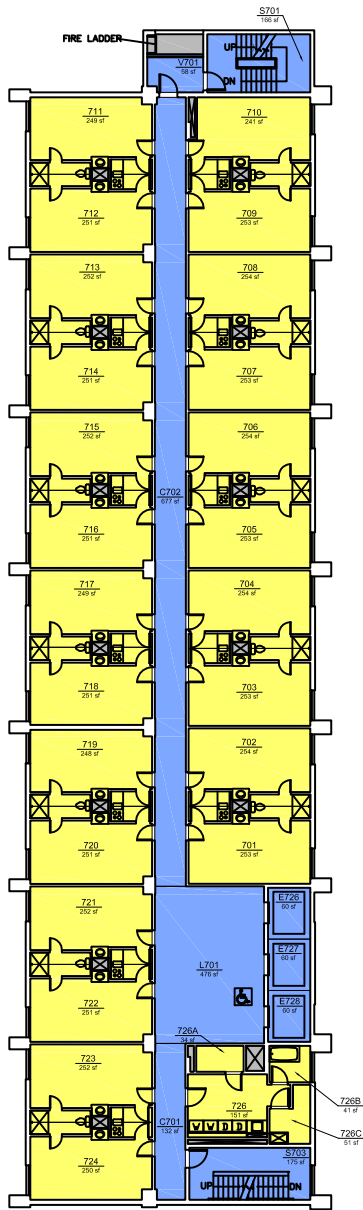
1912 SW 6th Avenue, Portland, Oregon 97201-5264




Print Date: 2011

Last Modified Date: 10/2011

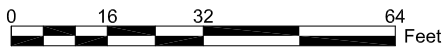


Campus Planning Office
<http://www.pdx.edu/planning-sustainability>



STANDARD LAYER REPORT		
	AREA	QTY
	Circulation	1,864 9
	Net Assignable Space	6,309 28
	Vertical Penetrations	127 18
	TOTAL:	8,300 55
	Floor Gross:	9,324

STANDARD SPACE REPORT



ONDINE

Seventh Floor Plan

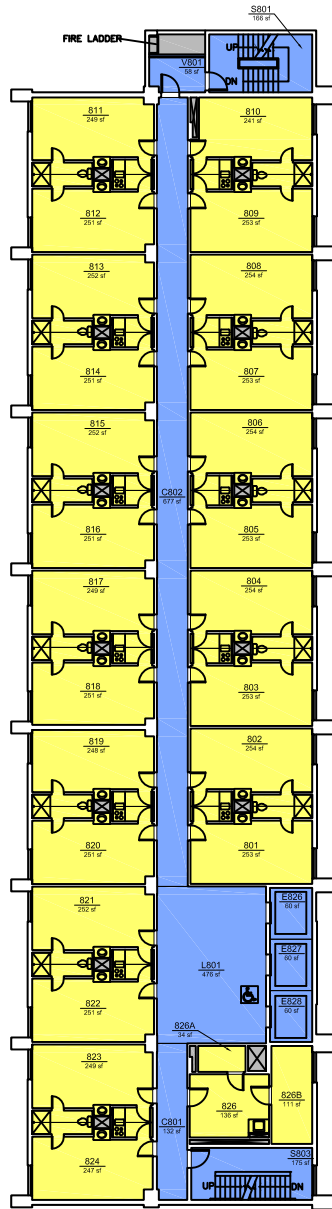
1912 SW 6th Avenue, Portland, Oregon 97201-5264

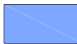


Print Date: 2011

Last Modified Date: 10/2011

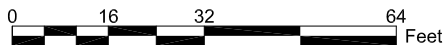


Campus Planning Office
<http://www.pdx.edu/planning-sustainability>



STANDARD LAYER REPORT		
	AREA	QTY
 Circulation	1,864	9
 Net Assignable Space	6,307	27
 Vertical Penetrations	127	18
TOTAL:	8,298	54
Floor Gross:	9,324	

STANDARD SPACE REPORT



ONDINE

Eighth Floor Plan

1912 SW 6th Avenue, Portland, Oregon 97201-5264

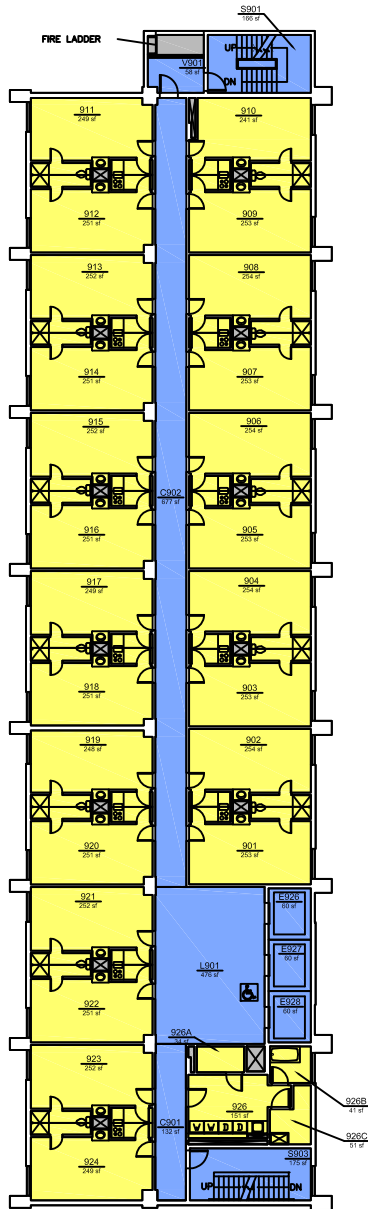
Print Date: 2011

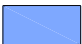


Last Modified Date: 10/2011



Portland State
UNIVERSITY

Campus Planning Office
<http://www.pdx.edu/planning-sustainability>



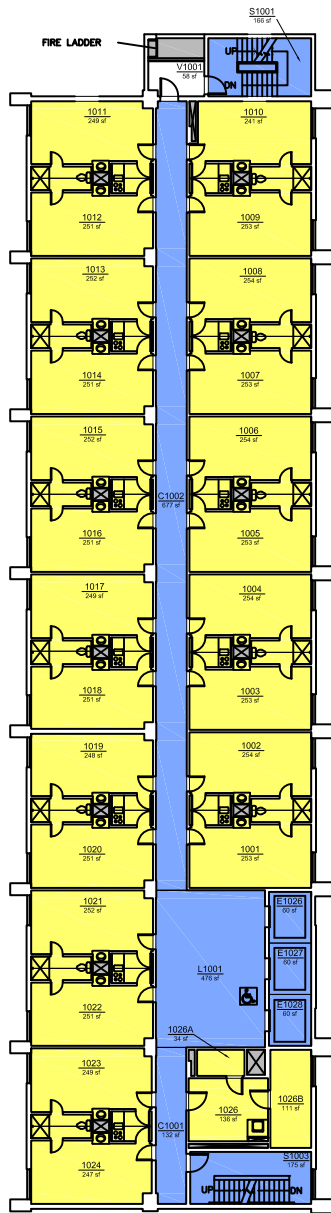
STANDARD LAYER REPORT			
		AREA	QTY
	Circulation	1,864	9
	Net Assignable Space	6,308	28
	Vertical Penetrations	127	18
TOTAL:		8,299	55
Floor Gross:		9,324	



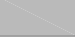
STANDARD SPACE REPORT



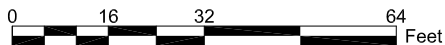
ONDINE
 Ninth Floor Plan
 1912 SW 6th Avenue, Portland, Oregon 97201-5264
 Print Date: 2011
 Last Modified Date: 10/2011


Portland State
 UNIVERSITY
 Campus Planning Office
<http://www.pdx.edu/planning-sustainability>



STANDARD LAYER REPORT			
		AREA	QTY
	Circulation	1,806	8
	Net Assignable Space	6,307	27
	Vertical Penetrations	125	17
TOTAL:		8,238	52
Floor Gross:		9,324	

STANDARD SPACE REPORT



ONDINE

Tenth Floor Plan

1912 SW 6th Avenue, Portland, Oregon 97201-5264

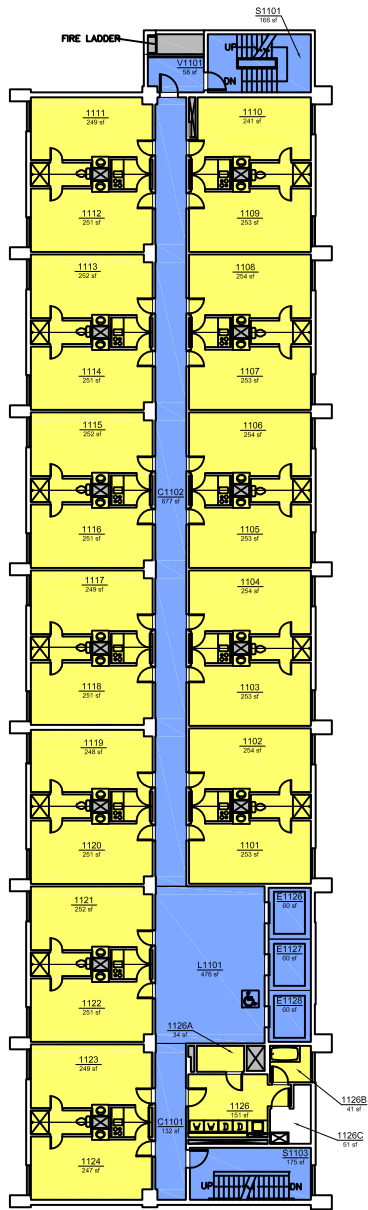
Print Date: 2011

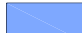


Last Modified Date: 10/2011



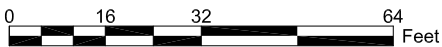
Portland State
UNIVERSITY

Campus Planning Office
<http://www.pdx.edu/planning-sustainability>



STANDARD LAYER REPORT			
		AREA	QTY
	Circulation	1,864	9
	Net Assignable Space	6,252	27
	Vertical Penetrations	127	18
TOTAL:		8,243	54
Floor Gross:		9,284	

STANDARD SPACE REPORT



ONDINE

Eleventh Floor Plan

1912 SW 6th Avenue, Portland, Oregon 97201-5264

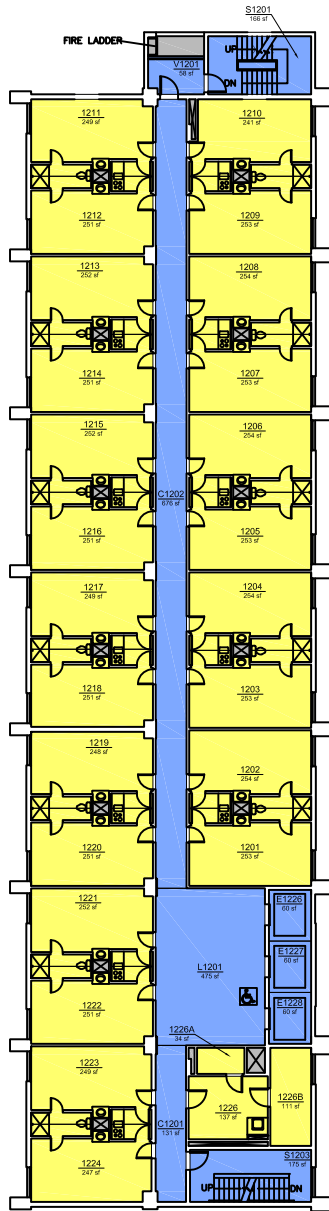
Print Date: 2011




Last Modified Date: 10/2011



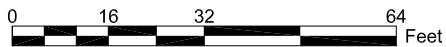
Portland State
UNIVERSITY

Campus Planning Office
<http://www.pdx.edu/planning-sustainability>



STANDARD LAYER REPORT		
	AREA	QTY
 Circulation	1,861	9
 Net Assignable Space	6,308	27
 Vertical Penetrations	127	18
TOTAL:	8,296	54
Floor Gross:	9,324	

STANDARD SPACE REPORT



ONDINE

Twelfth Floor Plan

1912 SW 6th Avenue, Portland, Oregon 97201-5264

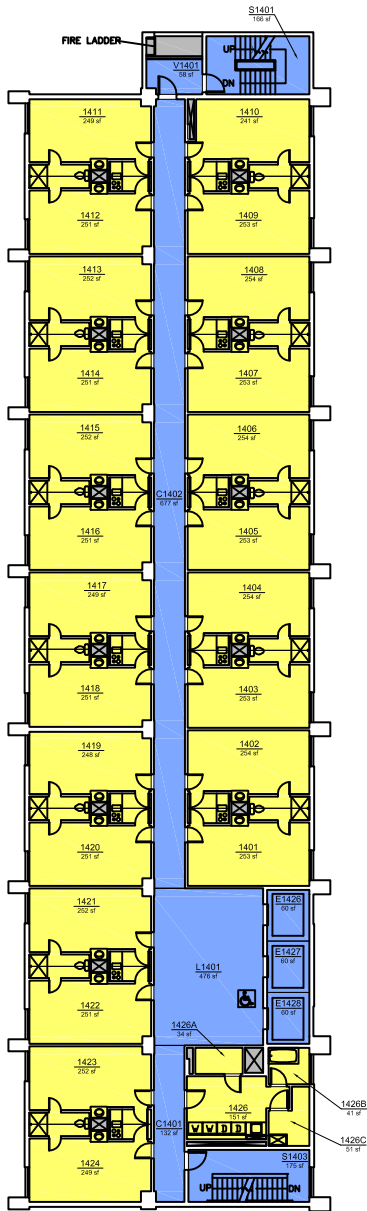
Print Date: 2011




Last Modified Date: 10/2011



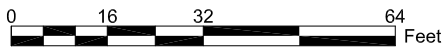
Portland State
UNIVERSITY

Campus Planning Office
<http://www.pdx.edu/planning-sustainability>



STANDARD LAYER REPORT			
		AREA	QTY
	Circulation	1,864	9
	Net Assignable Space	6,308	28
	Vertical Penetrations	128	18
TOTAL:		8,300	55
Floor Gross:		9,324	

STANDARD SPACE REPORT



ONDINE

Fourteenth Floor Plan

1912 SW 6th Avenue, Portland, Oregon 97201-5264

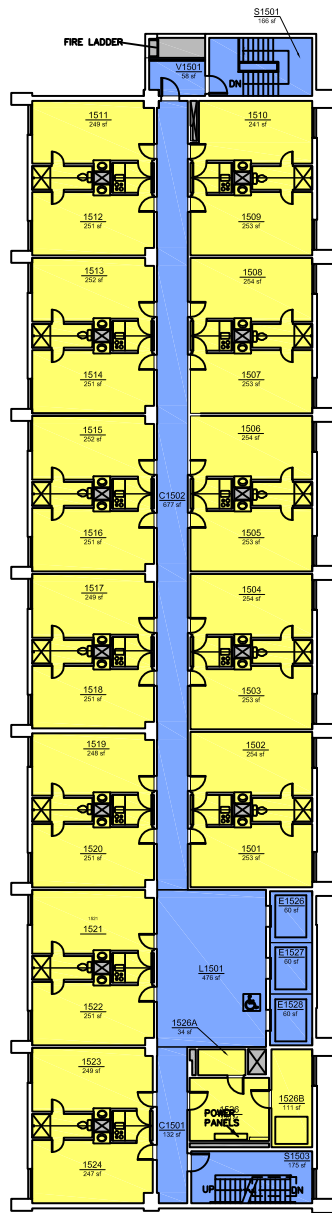
Print Date: 2011




Last Modified Date: 10/2011



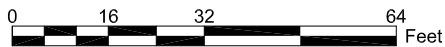
Portland State
UNIVERSITY

Campus Planning Office
<http://www.pdx.edu/planning-sustainability>



STANDARD LAYER REPORT		
	AREA	QTY
 Circulation	1,864	9
 Net Assignable Space	6,310	27
 Vertical Penetrations	128	18
TOTAL:	8,302	54
Floor Gross:	9,284	

STANDARD SPACE REPORT



ONDINE

Fifteenth Floor Plan

1912 SW 6th Avenue, Portland, Oregon 97201-5264

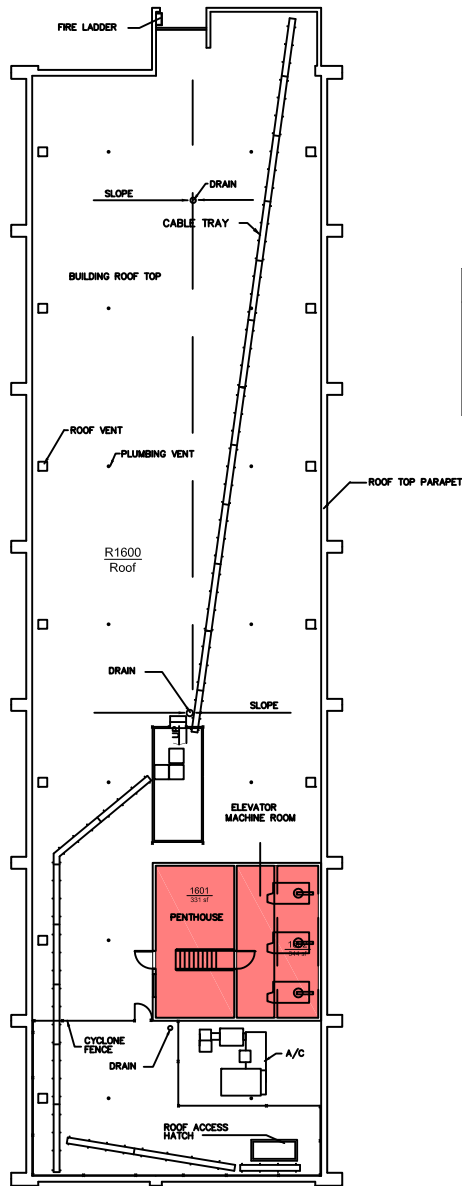
Print Date: 2011


Last Modified Date: 10/2011

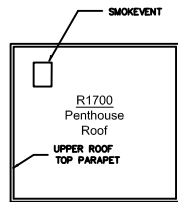


Portland State
UNIVERSITY

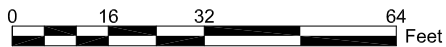
Campus Planning Office
<http://www.pdx.edu/planning-sustainability>



STANDARD LAYER REPORT		
	AREA	QTY
 Mechanical Space	675	2
TOTAL:	675	2
Floor Gross:	740	



STANDARD SPACE REPORT



ONDINE

Penthouse Plan

1912 SW 6th Avenue, Portland, Oregon 97201-5264

Print Date: 2011

Last Modified Date: 10/2011



Campus Planning Office
<http://www.pdx.edu/planning-sustainability>