




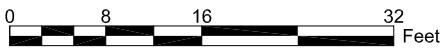


STANDARD LAYER REPORT			
		AREA	QTY
	Building Services	679	6
	Circulation	1,229	8
	Mechanical Space	431	2
	Net Assignable Space	4,269	38
	Vertical Penetrations	48	4
	TOTAL:	6,656	58
	Floor Gross:	7,791	



BLACKSTONE

First Floor Plan

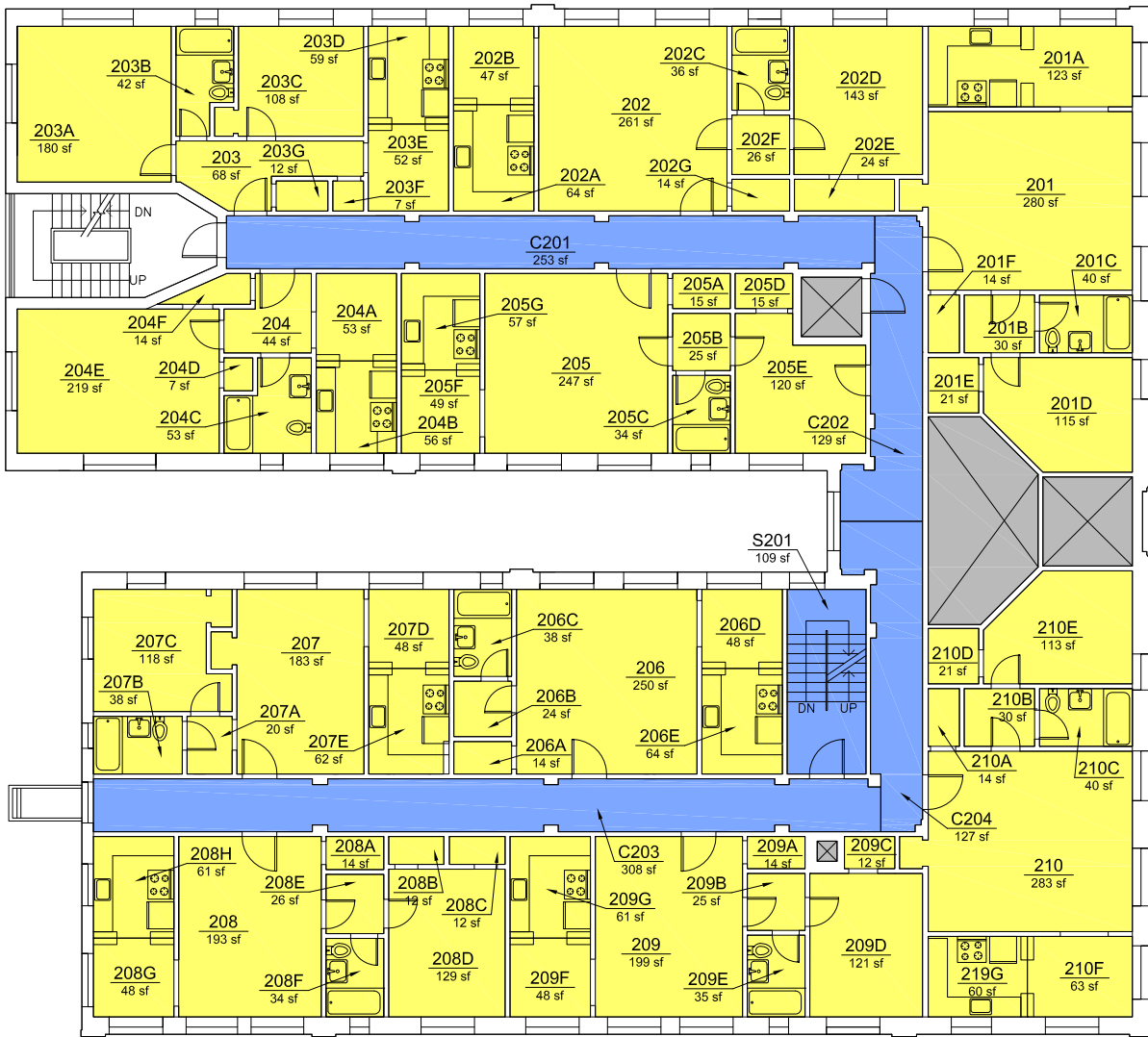
1831 SW Park, Portland, Oregon 97201-3258

Print Date: 10/2010

Last Modified Date: 32

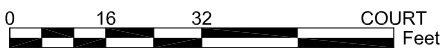


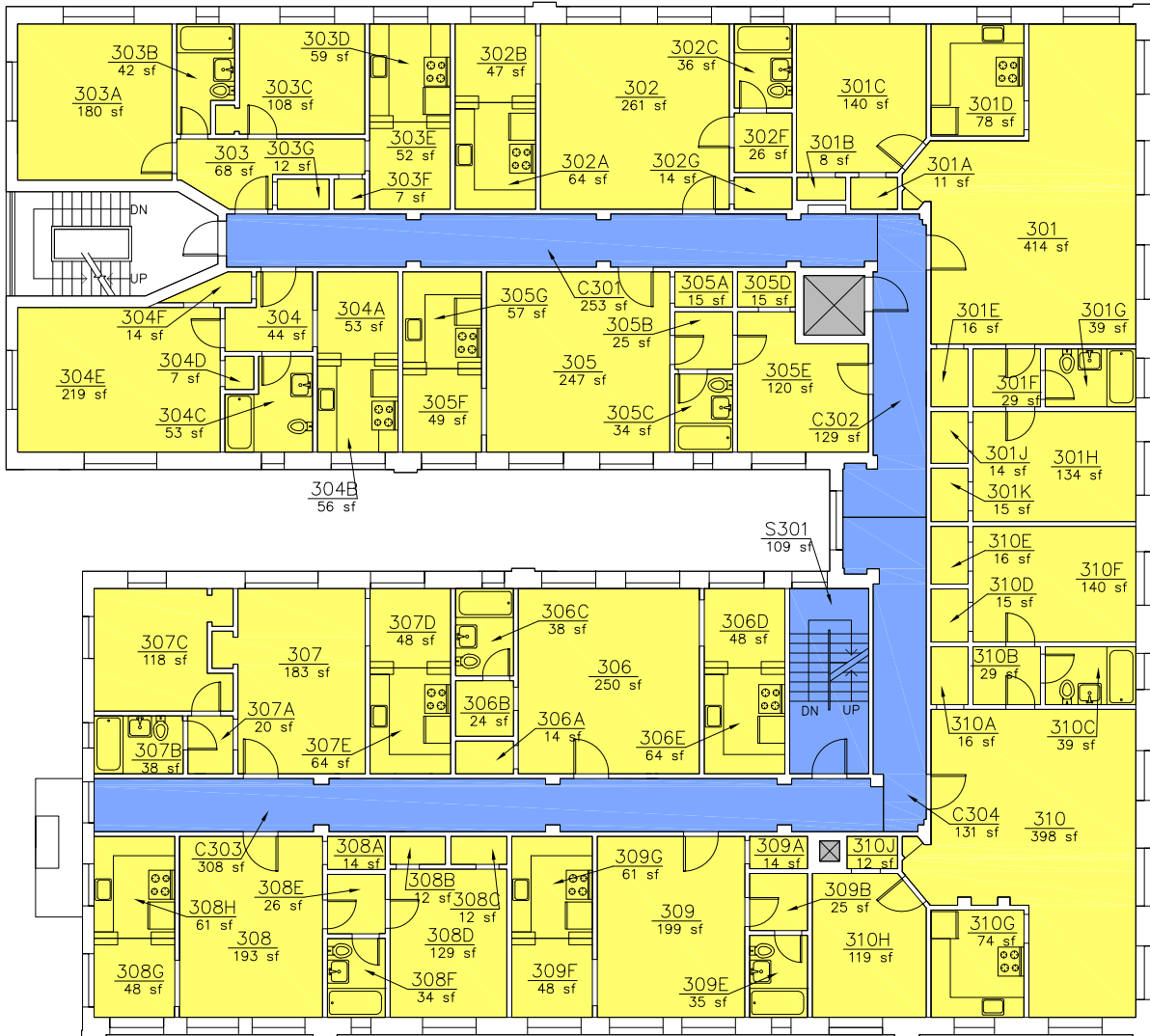
Campus Planning Office
<http://www.pdx.edu/planning-sustainability>






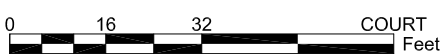
STANDARD LAYER REPORT

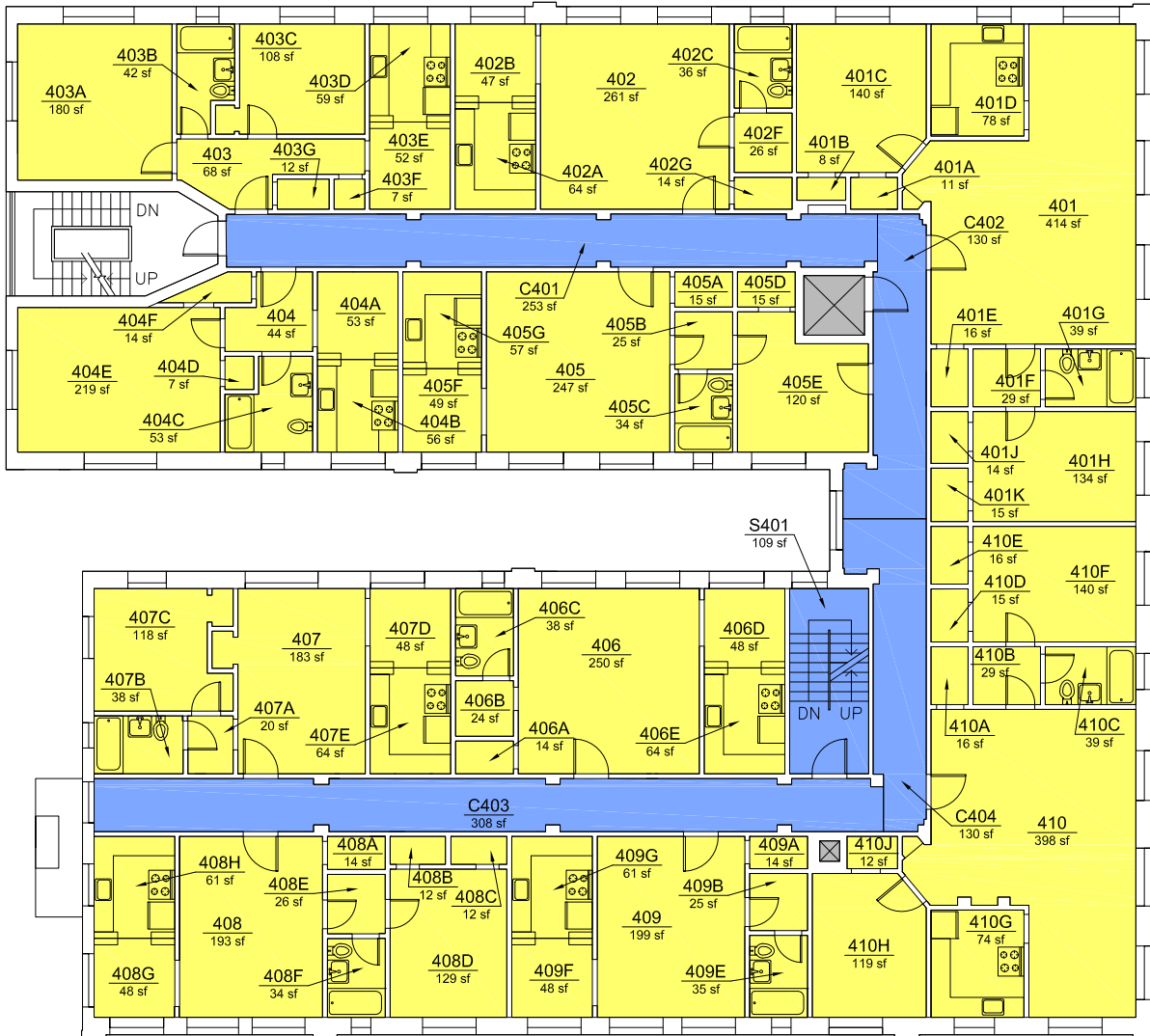
	AREA	QTY
Circulation	926	5
Net Assignable Space	5,349	75
Vertical Penetrations	236	4
TOTAL:	6,511	84
Floor Gross:	7,791	

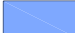




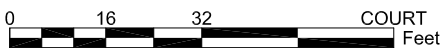


STANDARD LAYER REPORT		
	AREA	QTY
	Circulation	930 5
	Net Assignable Space	5,560 77
	Vertical Penetrations	30 2
	TOTAL:	6,520 84
	Floor Gross:	7,796





STANDARD LAYER REPORT			
		AREA	QTY
	Circulation	930	5
	Net Assignable Space	5,560	77
	Vertical Penetrations	30	2
	TOTAL:	6,520	84
	Floor Gross:	7,796	



BLACKSTONE

Fourth Floor Plan

1831 SW Park, Portland, Oregon 97201-3258

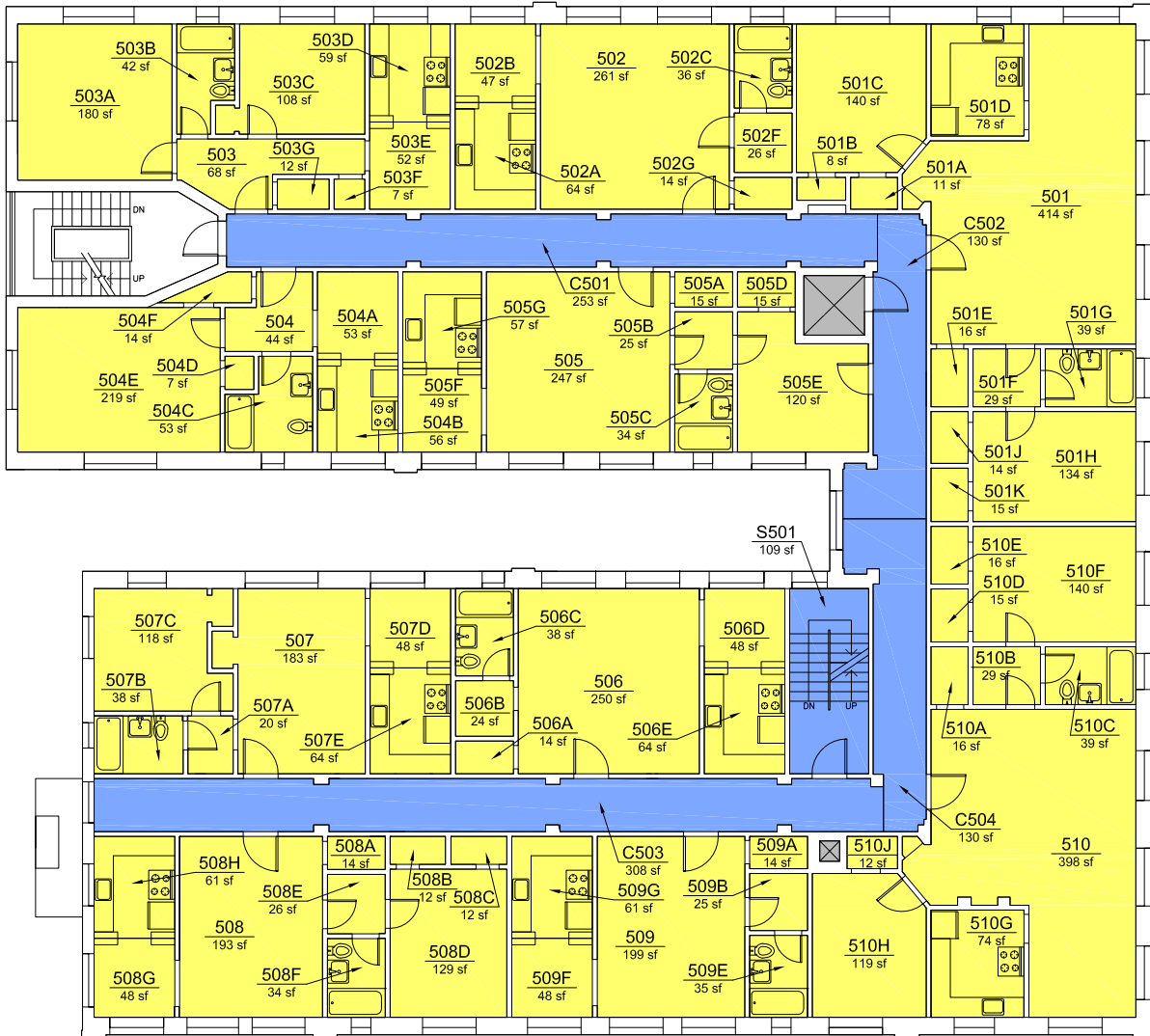
Print Date: 10/2010




Last Modified Date: 10/2010

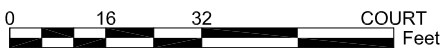


Campus Planning Office

<http://www.pdx.edu/planning-sustainability>



STANDARD LAYER REPORT		
	AREA	QTY
 Circulation	930	5
 Net Assignable Space	5,560	77
 Vertical Penetrations	30	2
TOTAL:	6,520	84
Floor Gross:	7,796	



BLACKSTONE

Fifth Floor Plan

1831 SW Park, Portland, Oregon 97201-3258

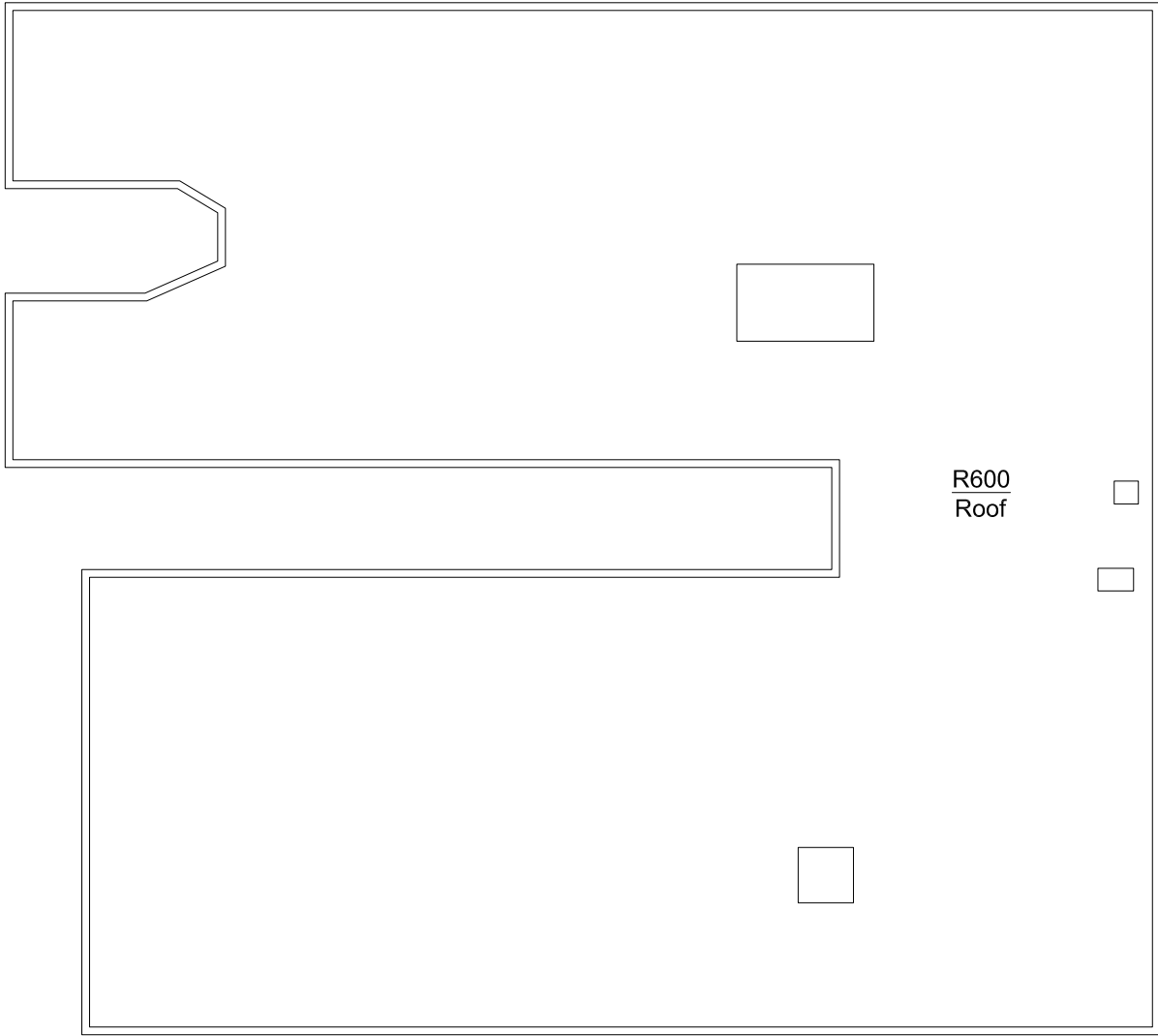
Print Date: 10/2010

Last Modified Date: 10/2010



Campus Planning Office

<http://www.pdx.edu/planning-sustainability>



R600
Roof



BLACKSTONE

Roof Plan

1831 SW Park, Portland, Oregon 97201-3258

Print Date: 10/2010

Last Modified Date: 10/2010



Campus Planning Office
<http://www.pdx.edu/planning-sustainability>