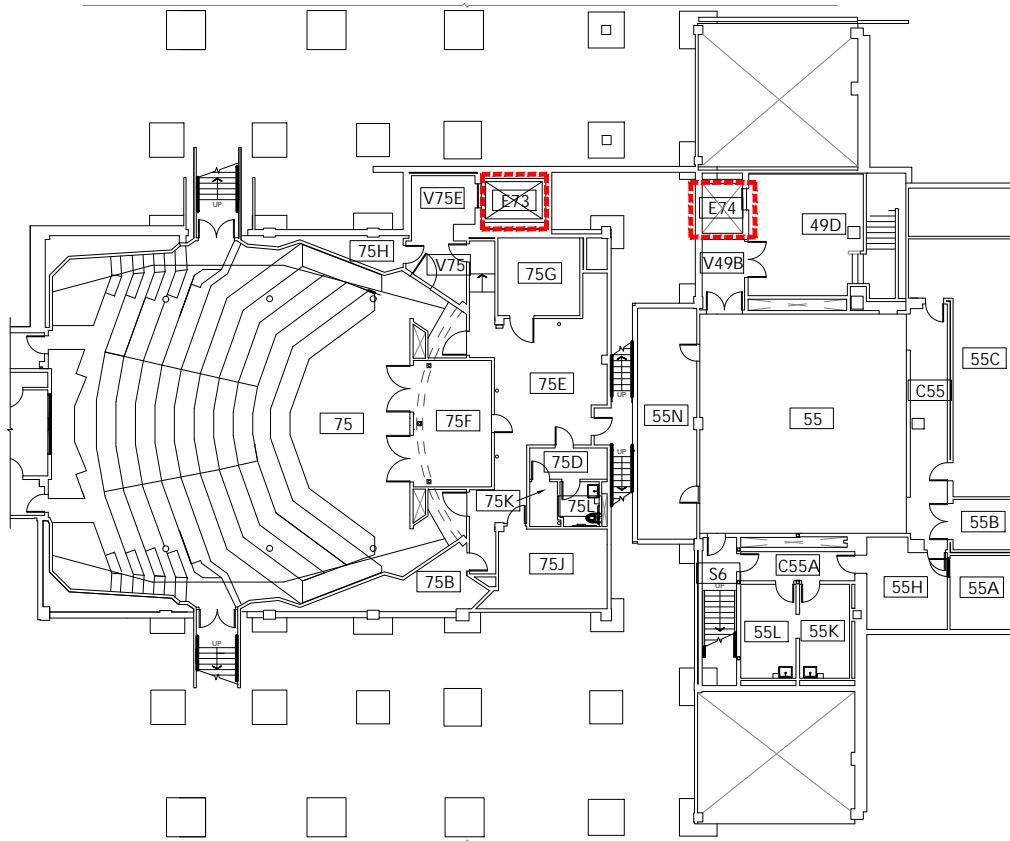


Lincoln Hall (LH)

MAIN ENTRANCE ON BASEMENT

If you need assistance, or an accommodation to access an office or classroom please contact:
For Student - Disability Resource Center at (503) 725-4150
For Employees - Human Resources at (503) 725-4926



Sub-Basement
 1/32" = 1'-0"



ELEVATOR ACCESS



WHEELCHAIR ACCESS



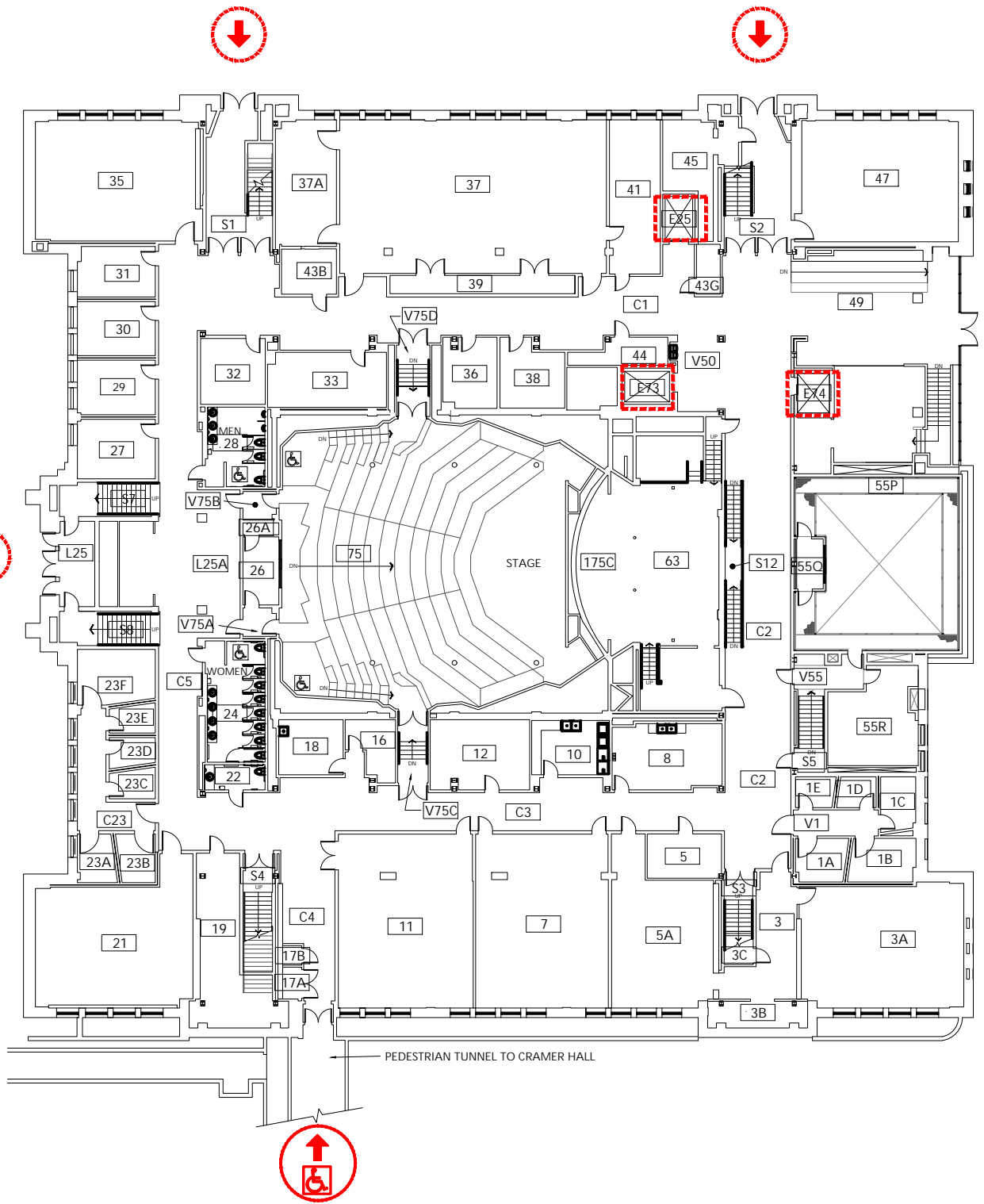
BUILDING ACCESS - NOT
 WHEELCHAIR ACCESSIBLE



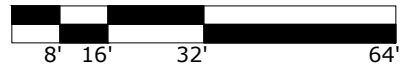
LH
 Lincoln Hall
 1620 SW Park Avenue

DRAWN BY:
 NR
 DATE:
 4/2026

202_A1



Basement
1/32" = 1'-0"



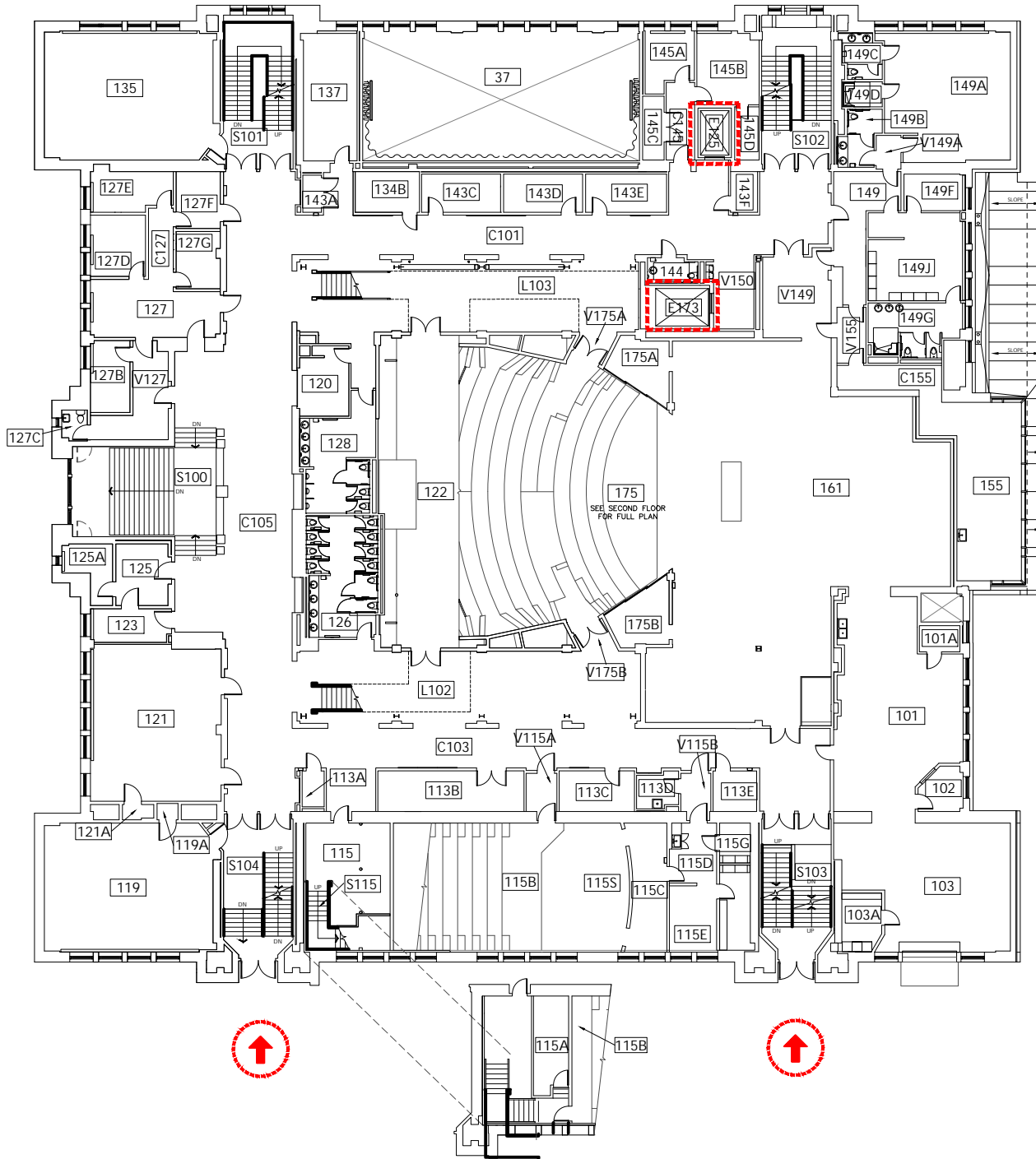
ELEVATOR ACCESS



WHEELCHAIR ACCESS



BUILDING ACCESS - NOT
WHEELCHAIR ACCESSIBLE



First Floor
1/32" = 1'-0"



ELEVATOR ACCESS



WHEELCHAIR ACCESS



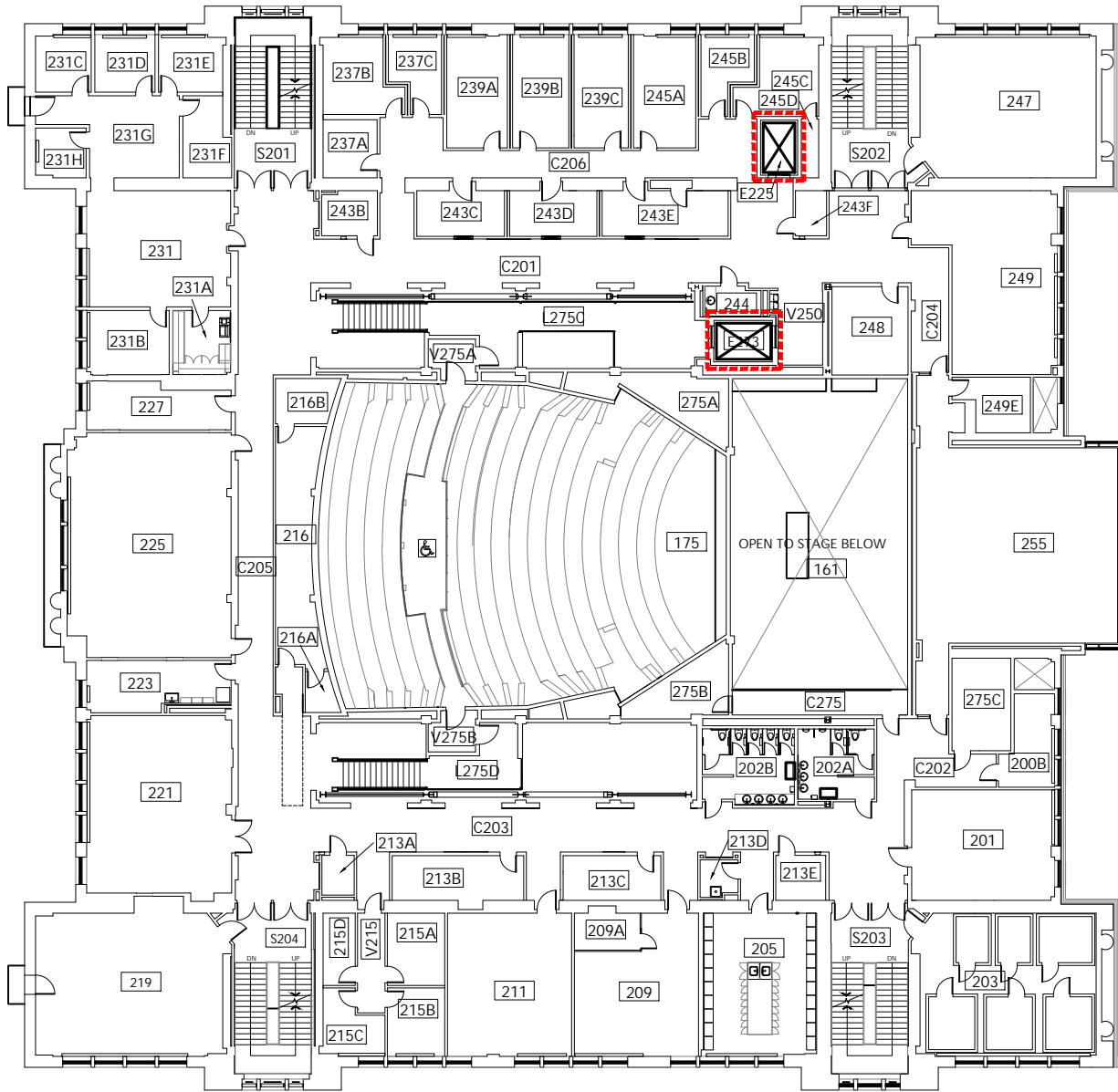
BUILDING ACCESS - NOT
WHEELCHAIR ACCESSIBLE



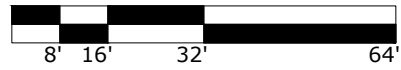
LH
Lincoln Hall
1620 SW Park Avenue

DRAWN BY:
NR
DATE:
4/2026

202_A3



Second Floor
 1/32" = 1'-0"



ELEVATOR ACCESS



WHEELCHAIR ACCESS



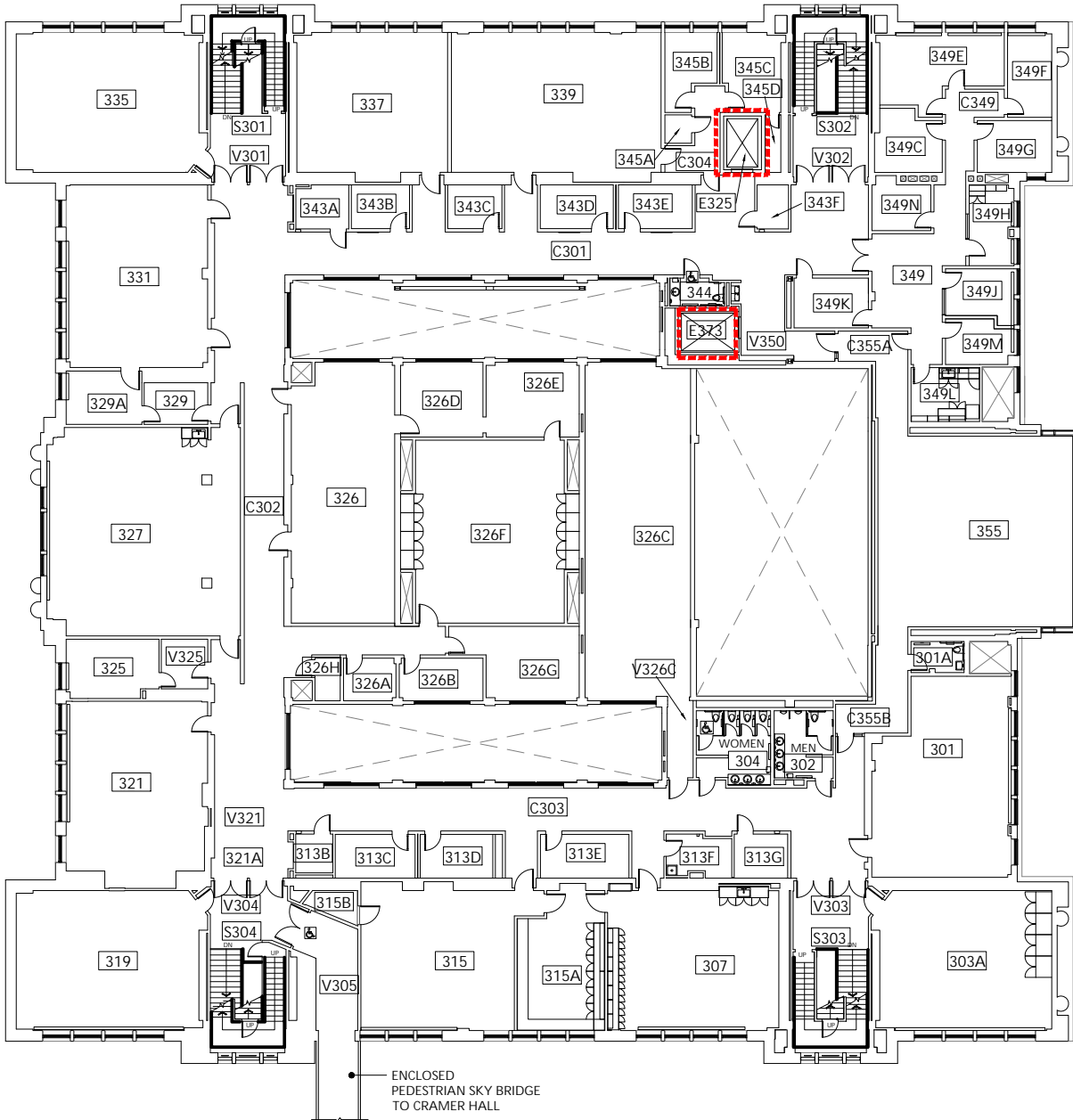
BUILDING ACCESS - NOT
 WHEELCHAIR ACCESSIBLE



LH
 Lincoln Hall
 1620 SW Park Avenue

DRAWN BY:
 NR
 DATE:
 4/2026

202_A4



Third Floor
1/32" = 1'-0"



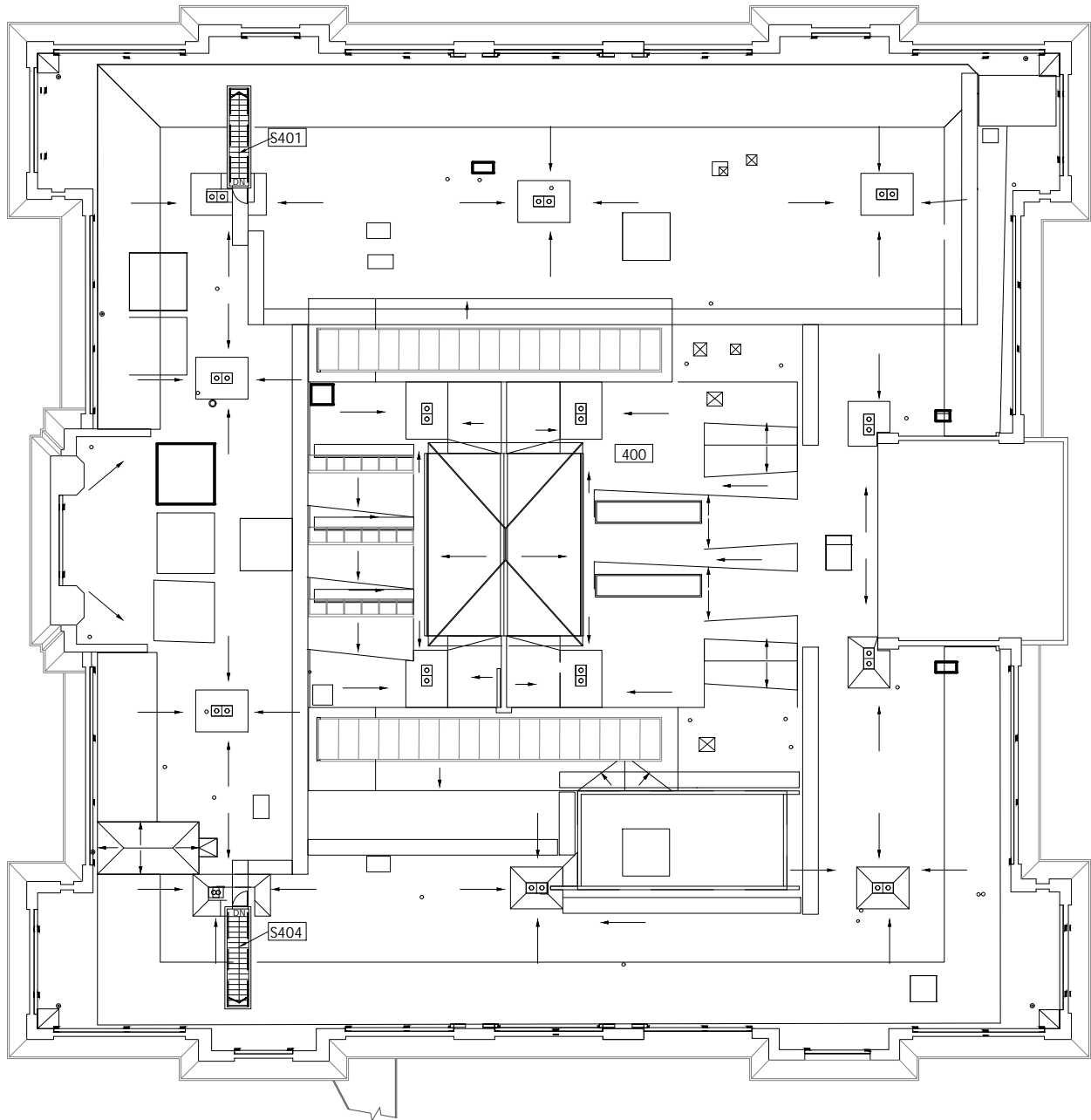
ELEVATOR ACCESS



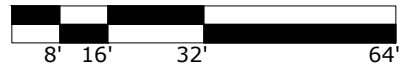
WHEELCHAIR ACCESS



BUILDING ACCESS - NOT WHEELCHAIR ACCESSIBLE



Roof
 1/32" = 1'-0"



ELEVATOR ACCESS



WHEELCHAIR ACCESS



BUILDING ACCESS - NOT
 WHEELCHAIR ACCESSIBLE



LH
 Lincoln Hall
 1620 SW Park Avenue

DRAWN BY:
 NR
 DATE:
 4/2026

202_A6