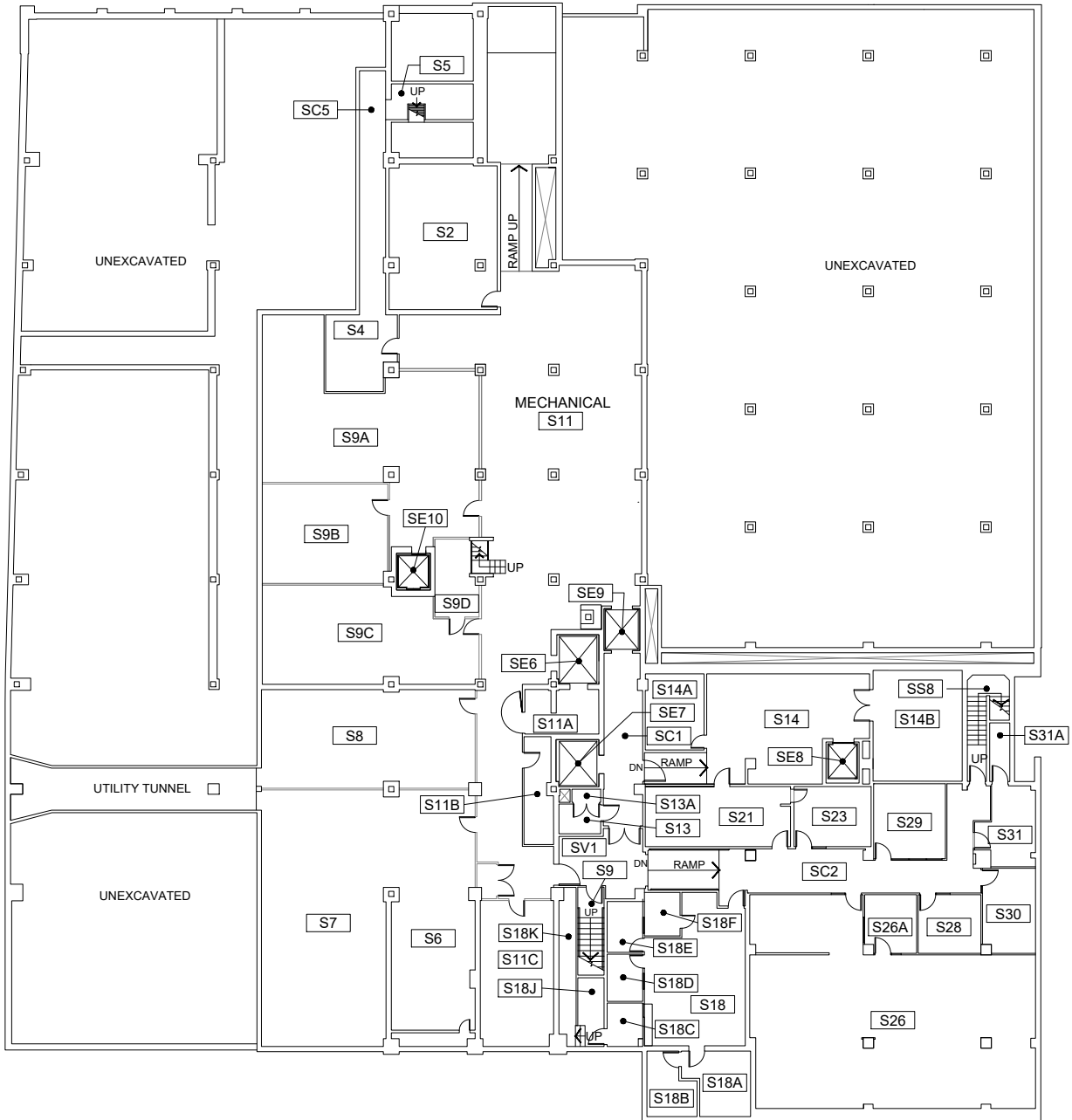


Smith Memorial Student Union (SMSU)

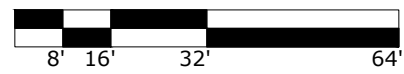
MAIN ENTRANCE ON FIRST FLOOR

If you need assistance, or an accommodation to access an office or classroom please contact:
For Students - Disability Resource Center at (503) 725-4150
For Employees -Human Resources at (503) 725-4926



<

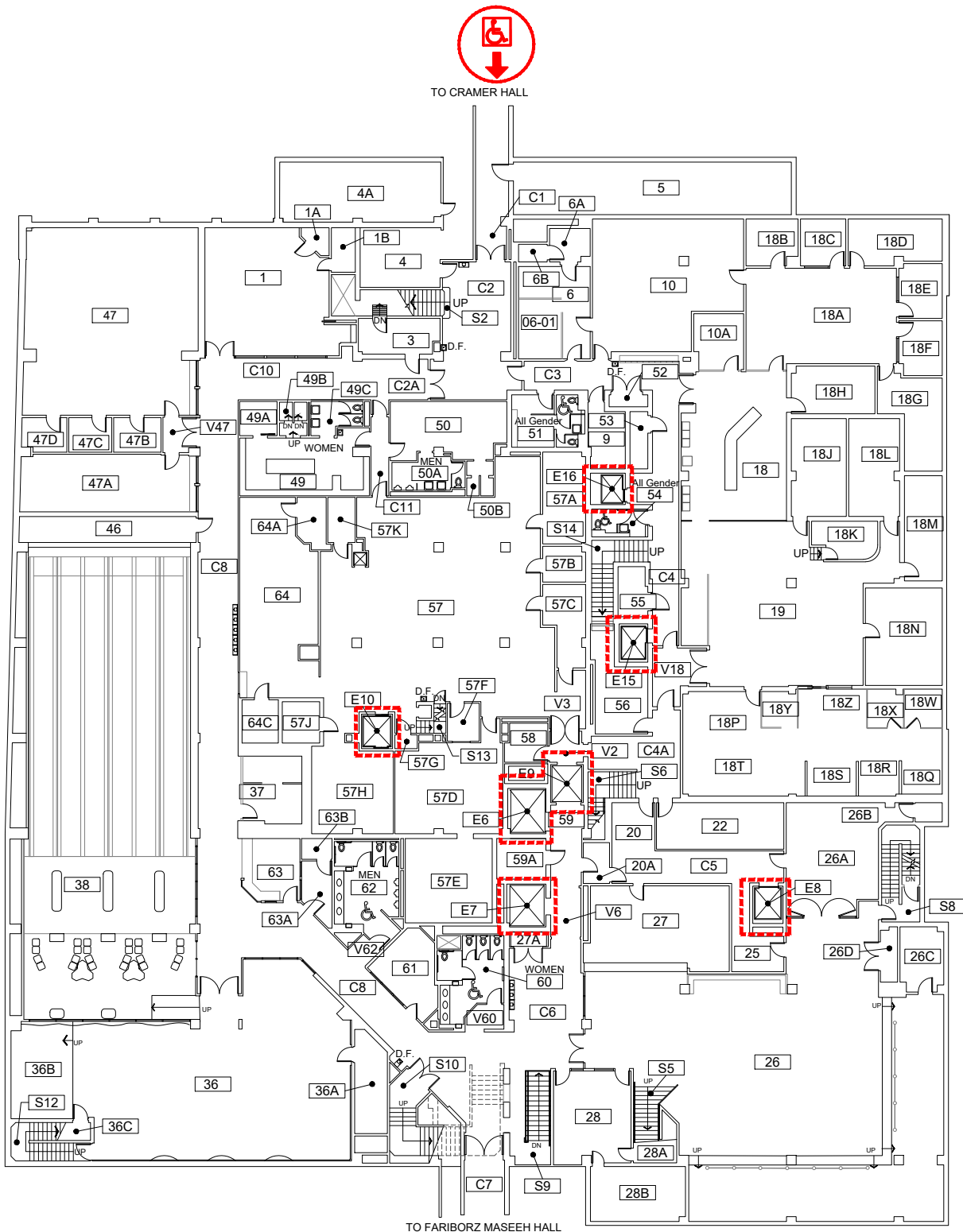
Scale
 1/32" = 1'-0"



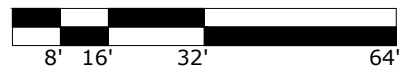
Sub-Basement
 Smith Memorial Student Union
 1825 SW Broadway, Portland, OR 97201

DRAWN BY:
 ASL
 DATE:
 08/2020

200_AB1



Scale
1/32" = 1'-0"



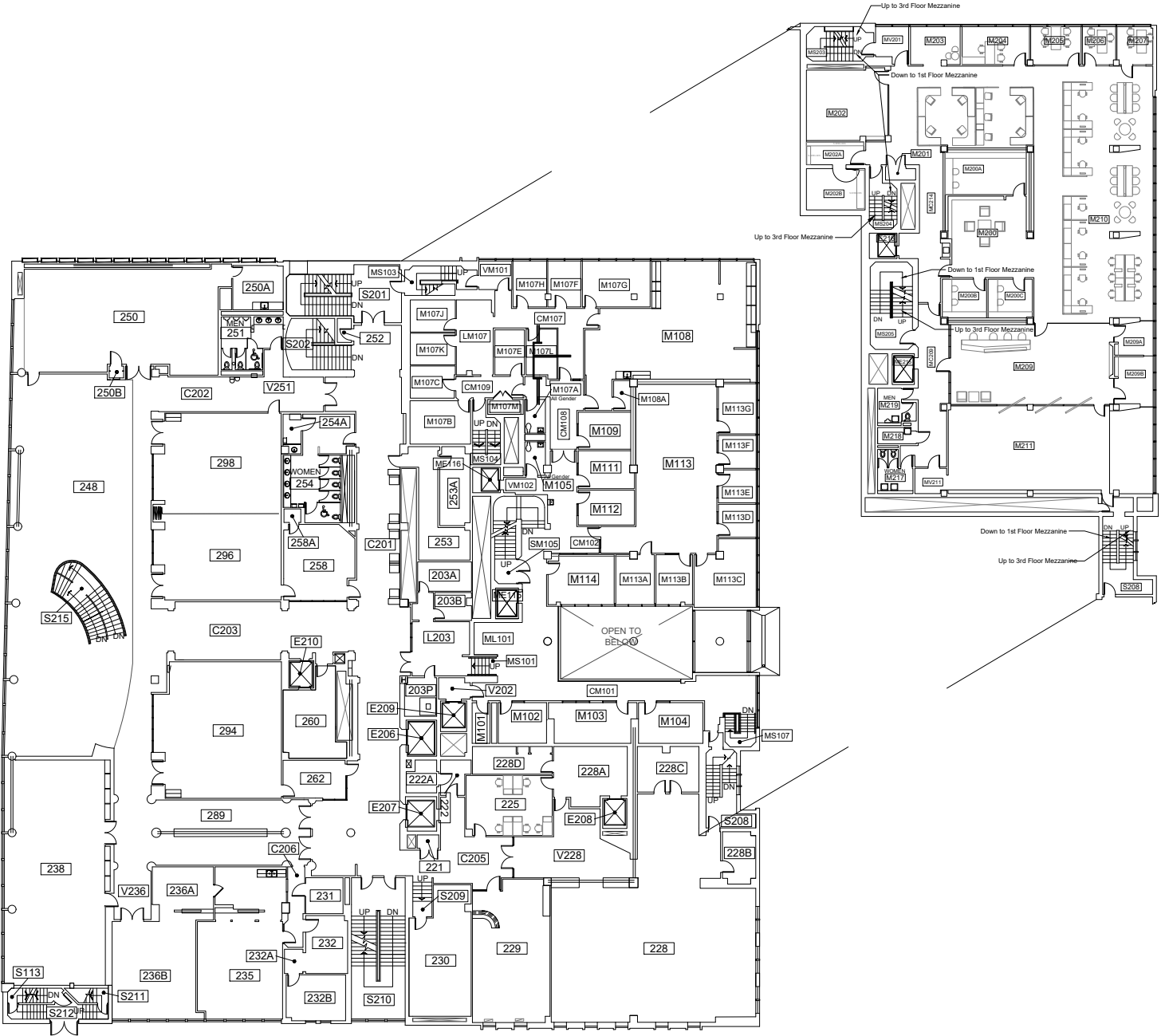
ELEVATOR ACCESS



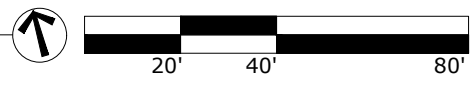
WHEELCHAIR ACCESS



BUILDING ACCESS - NOT
WHEELCHAIR ACCESSIBLE



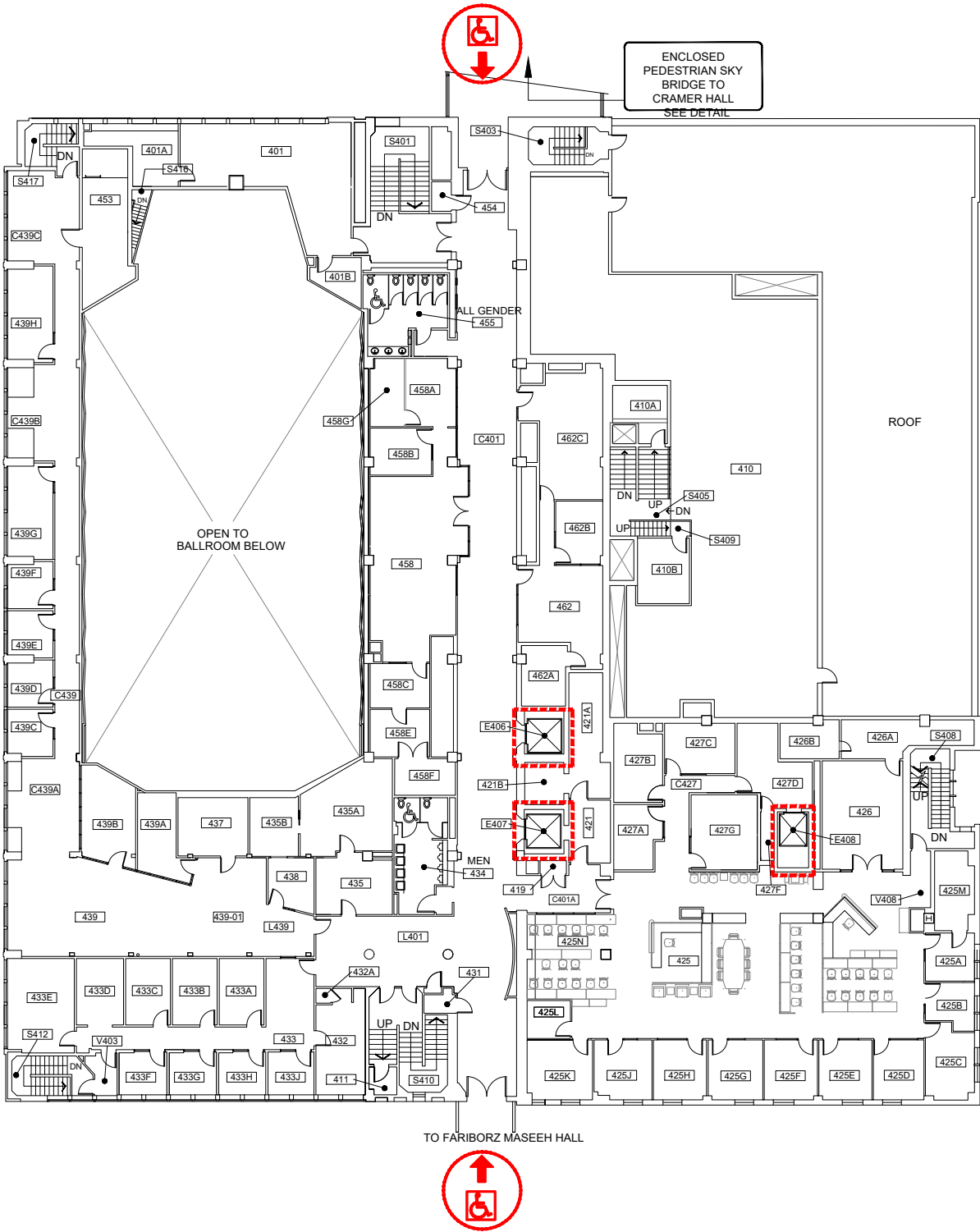
Scale
1" = 40'-0"



First and Second Floor Mezzanine
Smith Memorial Student Union
1825 SW Broadway, Portland, OR 97201

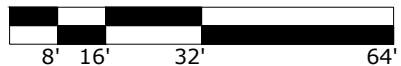
DRAWN BY:
TJK
DATE:
02/2023

200_A2



Scale

1/32" = 1'-0"



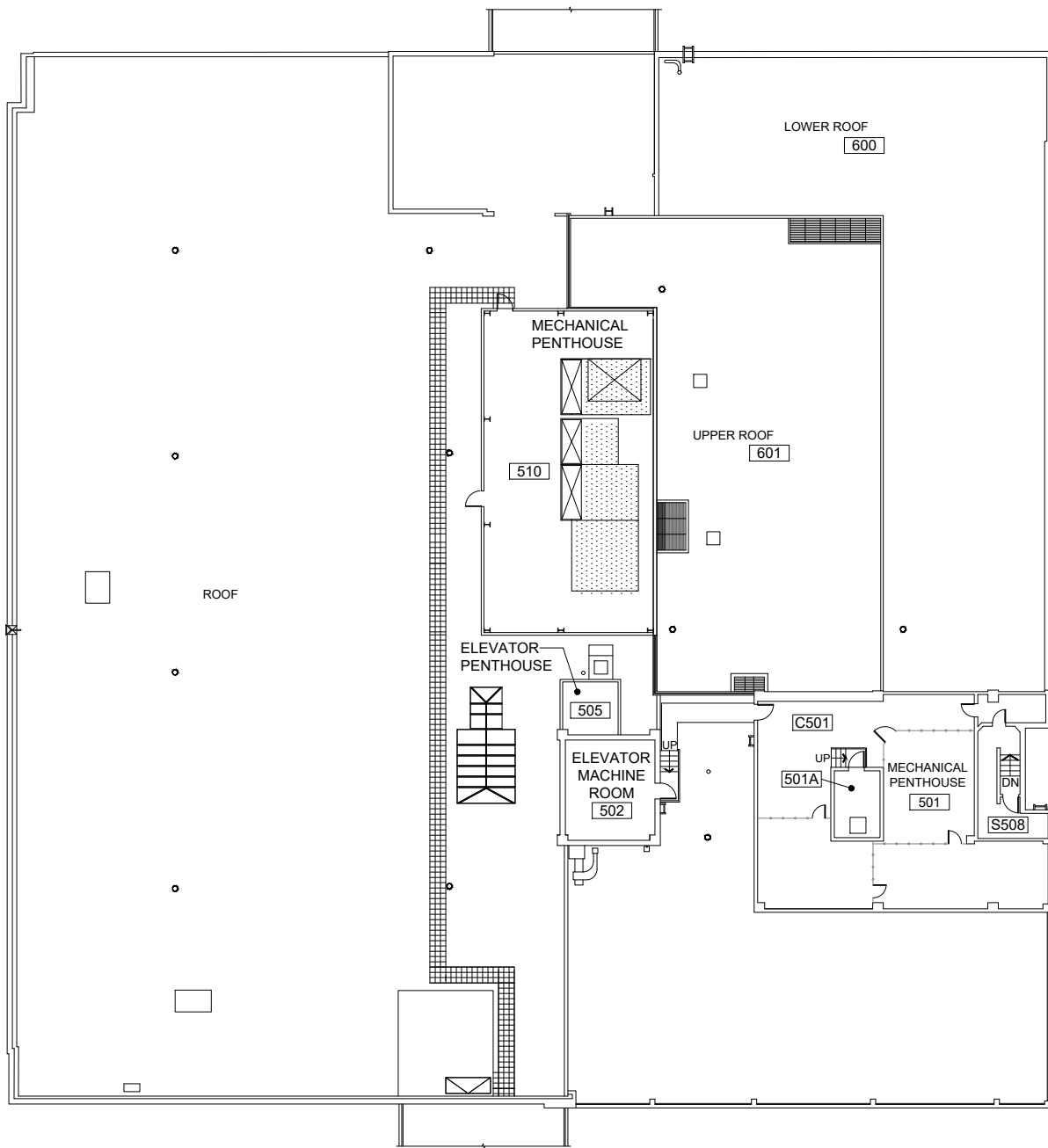
ELEVATOR ACCESS



WHEELCHAIR ACCESS



BUILDING ACCESS - NOT WHEELCHAIR ACCESSIBLE



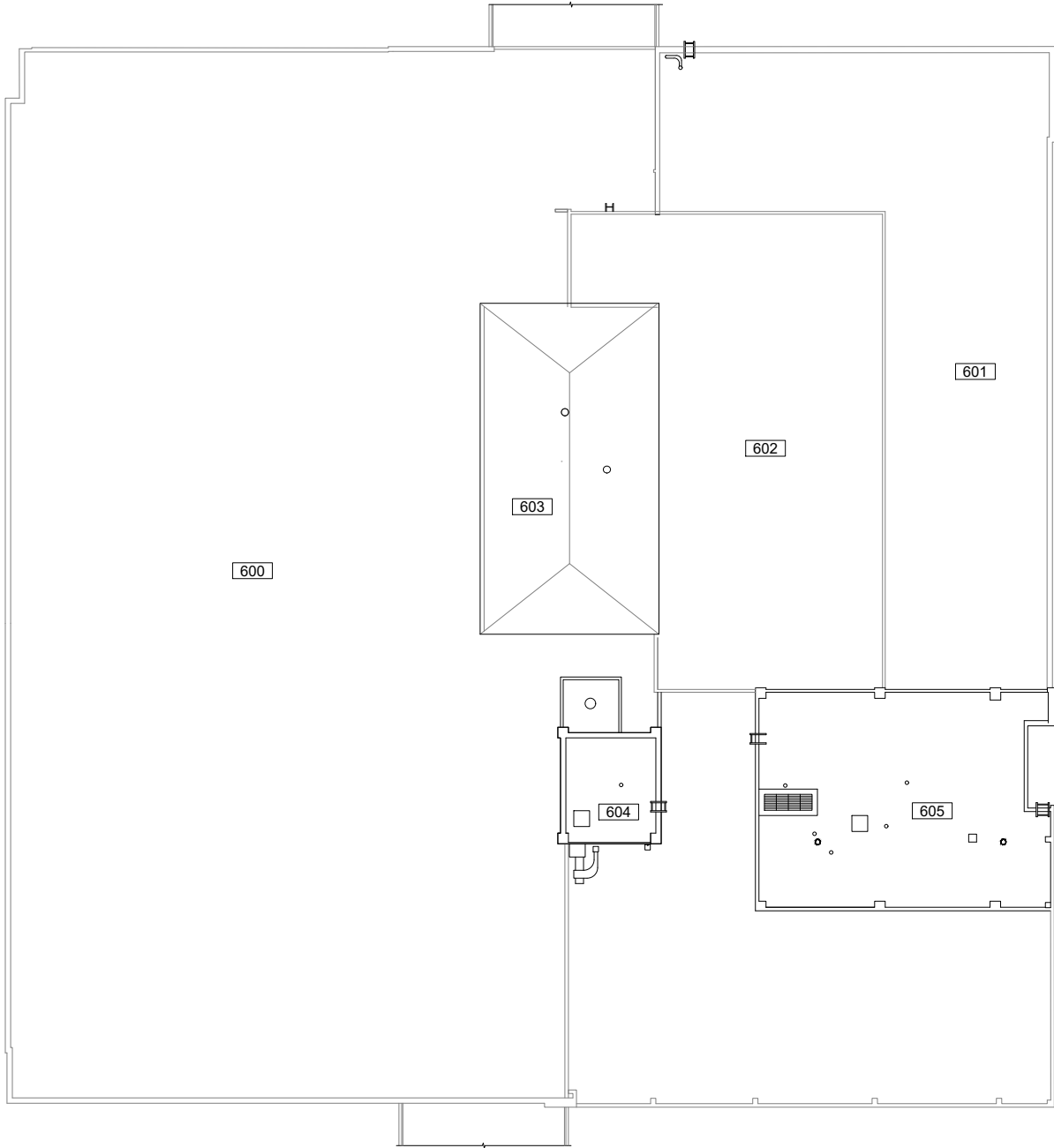
Scale
 1/32" = 1'-0"



Penthouse
 Smith Memorial Student Union
 1825 SW Broadway, Portland, OR 97201

DRAWN BY:
 ASL
 DATE:
 08/2020

200_A5



Scale

1/32" = 1'-0"



Roof
 Smith Memorial Student Union
 1825 SW Broadway, Portland, OR 97201

DRAWN BY:
 ASL
 DATE:
 08/2020

200_A6