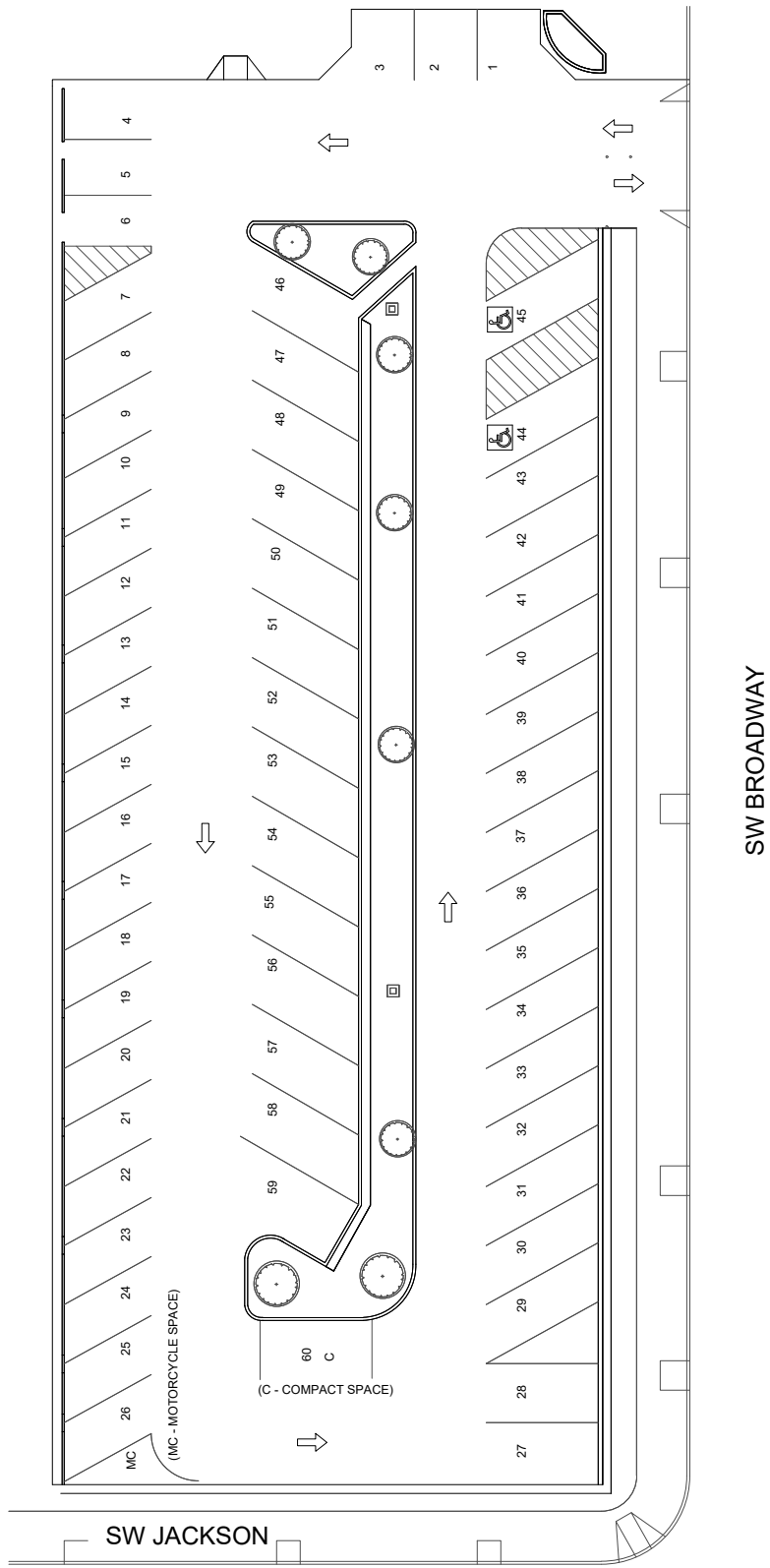


Shattuck Hall

MAIN ENTRANCE IS ON THE FIRST FLOOR

If you need assistance, or an accommodation to access an office or classroom please contact:
For Student - Disability Resource Center at (503) 725-4150
For Employees - Human Resources at (503) 725-4926



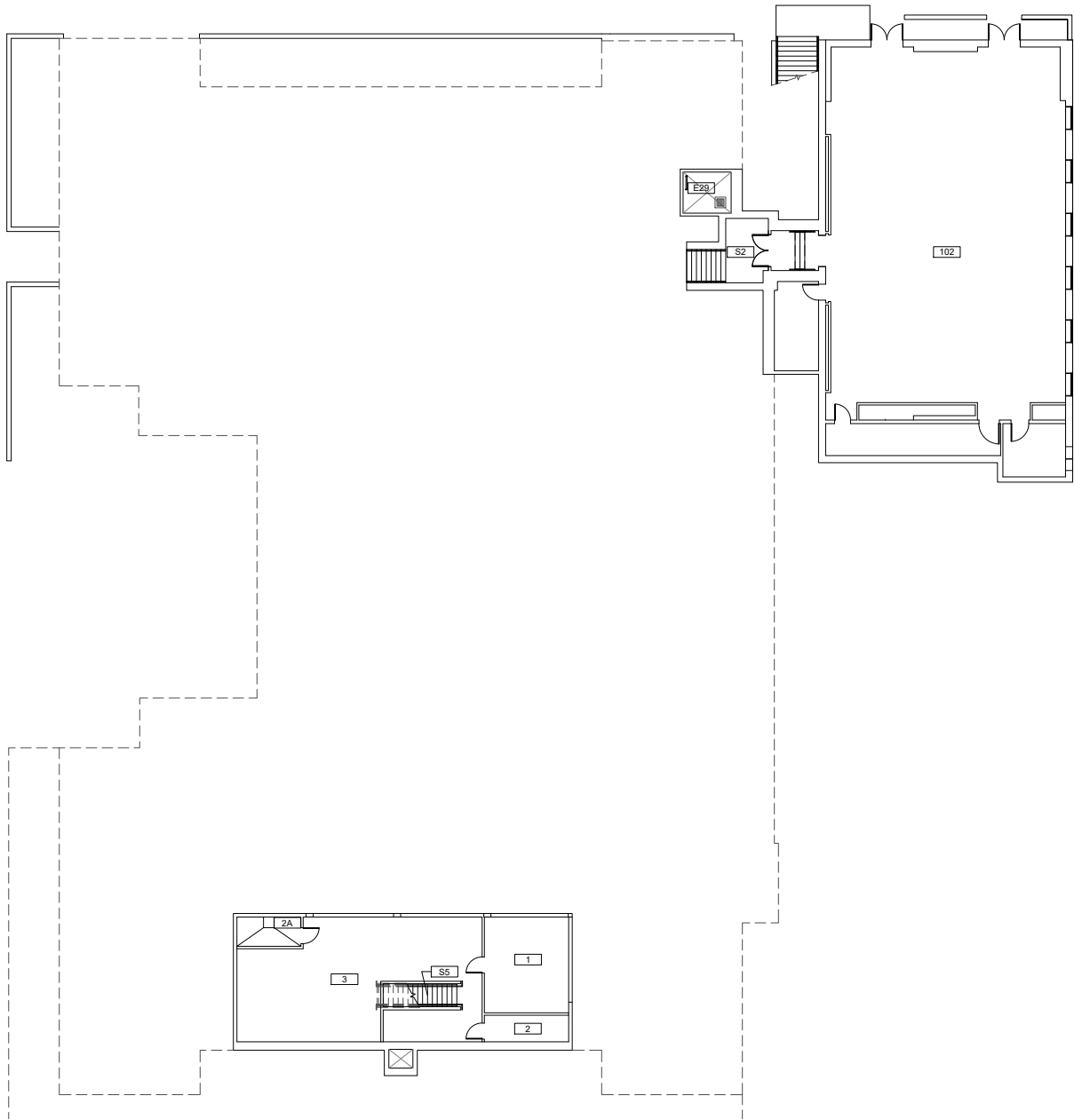
Scale
 1/32" = 1'-0"



Parking Lot Plan
 Shattuck Hall
 1914 SW Park Avenue

DRAWN BY:
 HH
 DATE:
 07/2020

198-A0

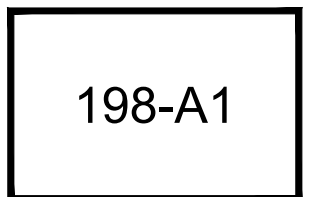


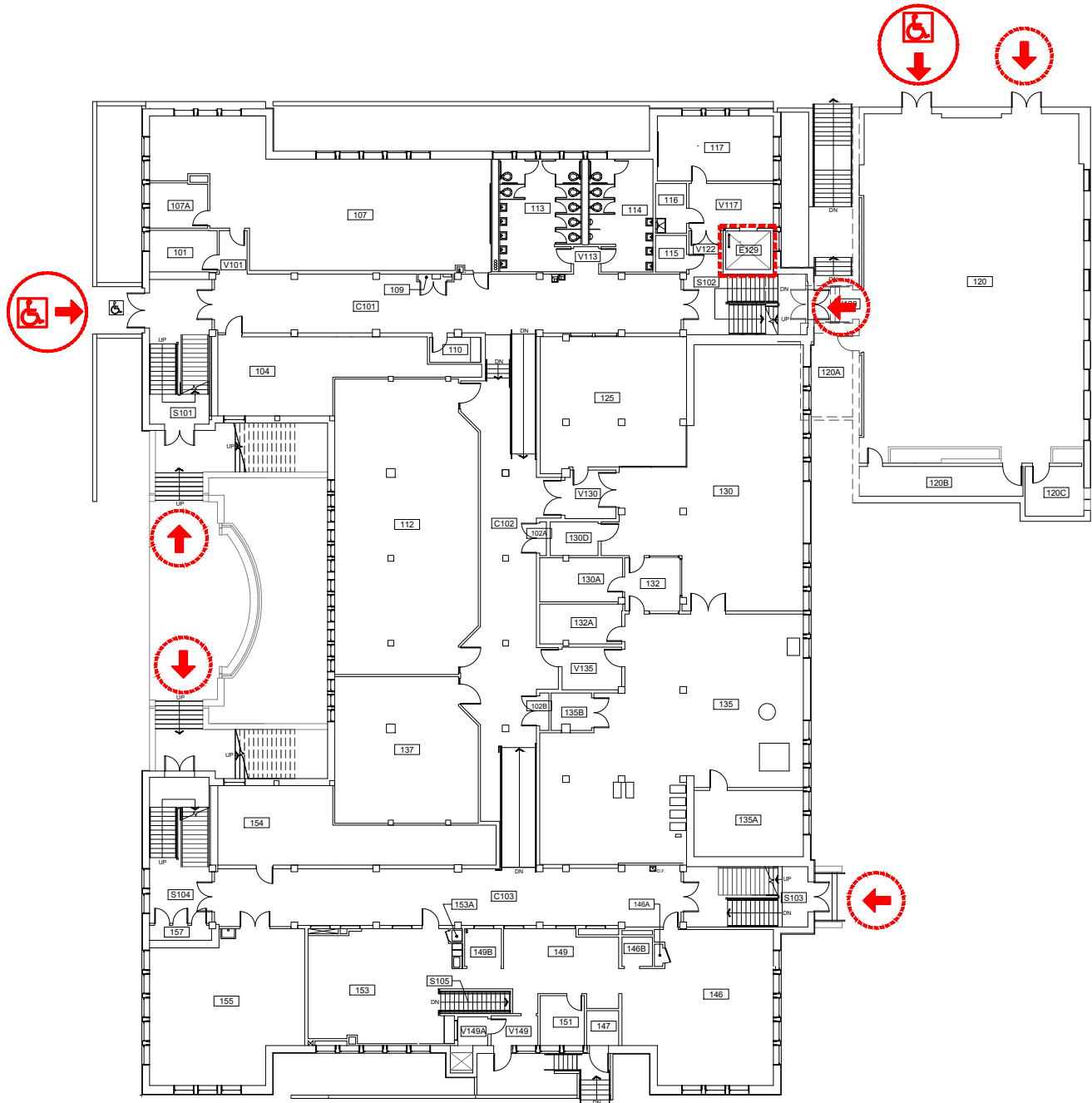
Scale
 1/32" = 1'-0"



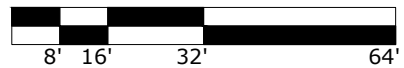
Basement Floor Plan
 Shattuck Hall
 1914 SW Park Avenue

DRAWN BY:
 HH
 DATE:
 07/2020





Scale
 1/32" = 1'-0"



ELEVATOR ACCESS



WHEELCHAIR ACCESS



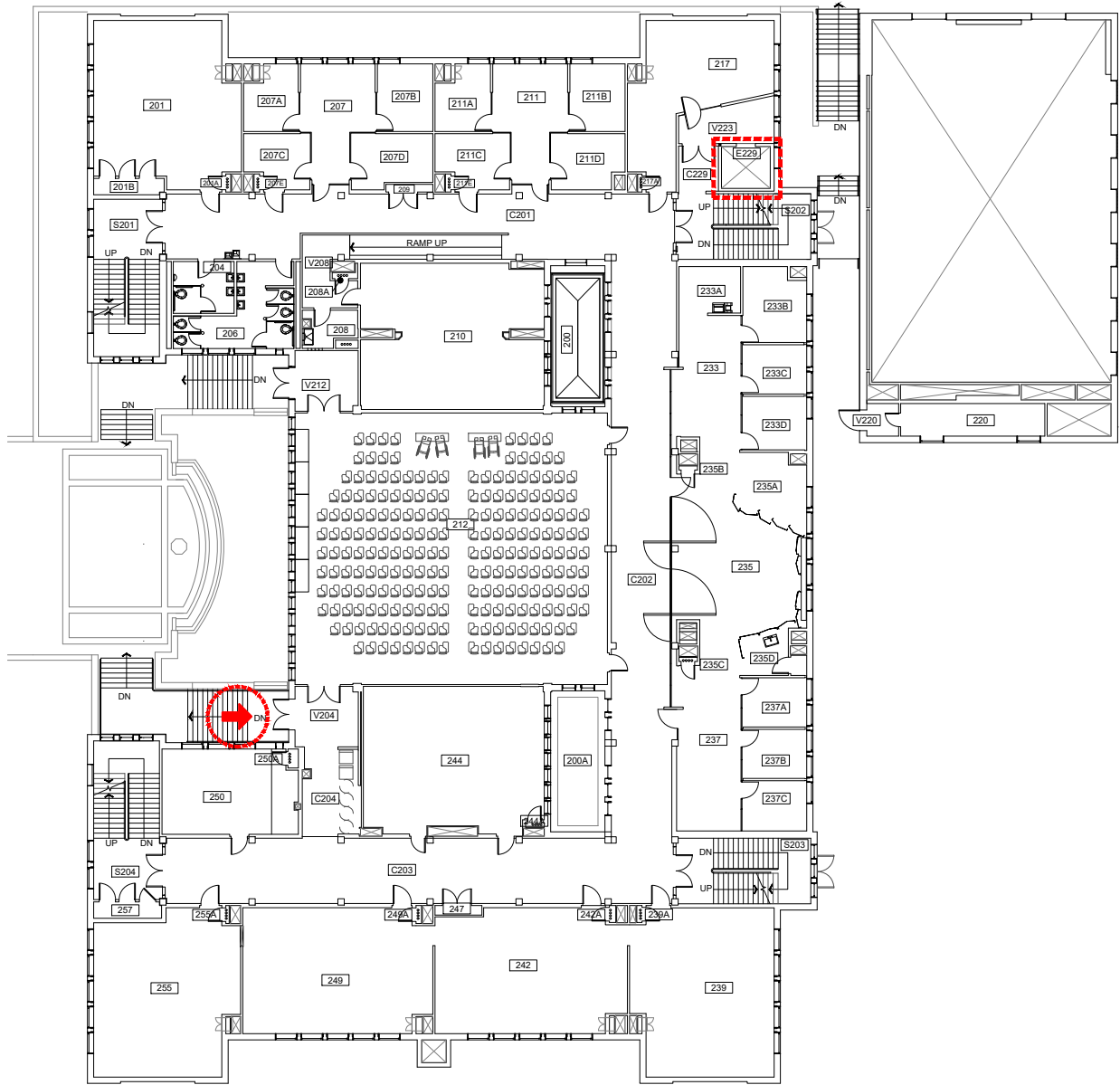
BUILDING ACCESS - NOT
 WHEELCHAIR ACCESSIBLE



First Floor Plan
 Shattuck Hall
 1914 SW Park Avenue

DRAWN BY:
 HH
 DATE:
 02/2022

198-A2



Scale
 1/32" = 1'-0"



ELEVATOR ACCESS



WHEELCHAIR ACCESS



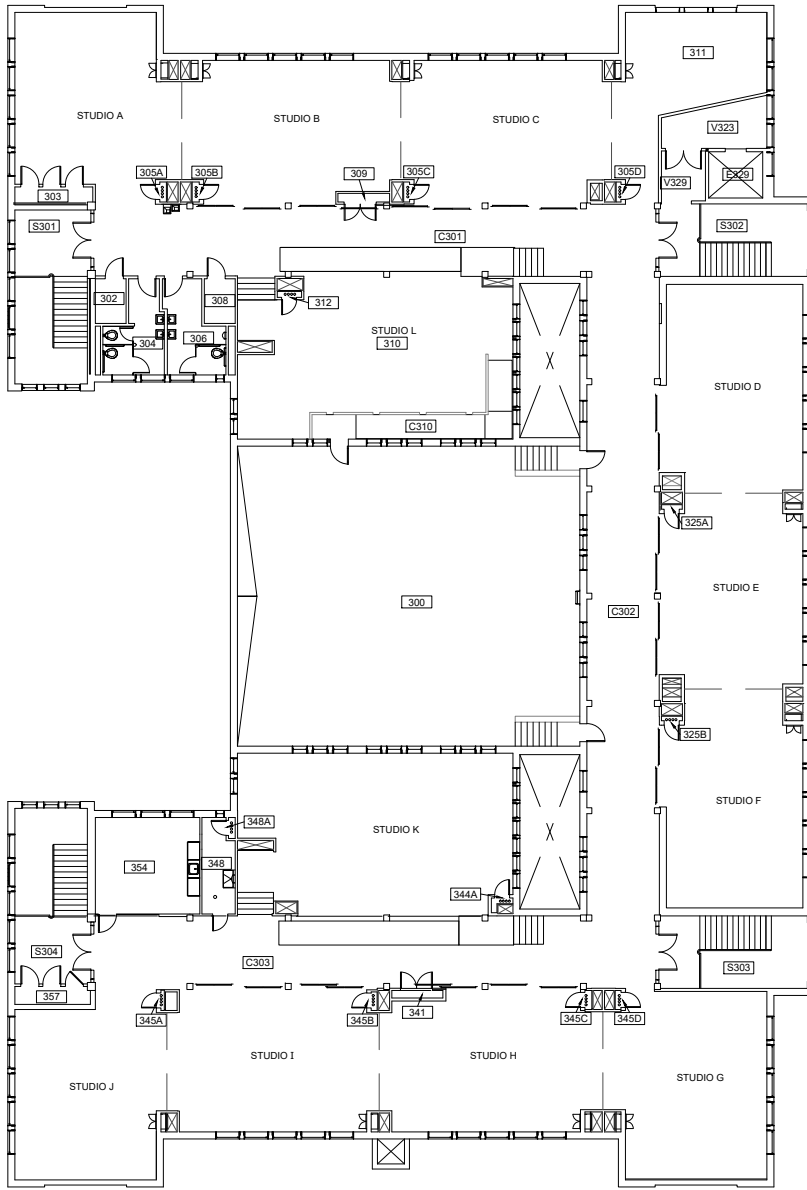
BUILDING ACCESS - NOT
 WHEELCHAIR ACCESSIBLE



Second Floor Plan
 Shattuck Hall
 1914 SW Park Avenue

DRAWN BY:
 HH
 DATE:
 07/2020

198-A3



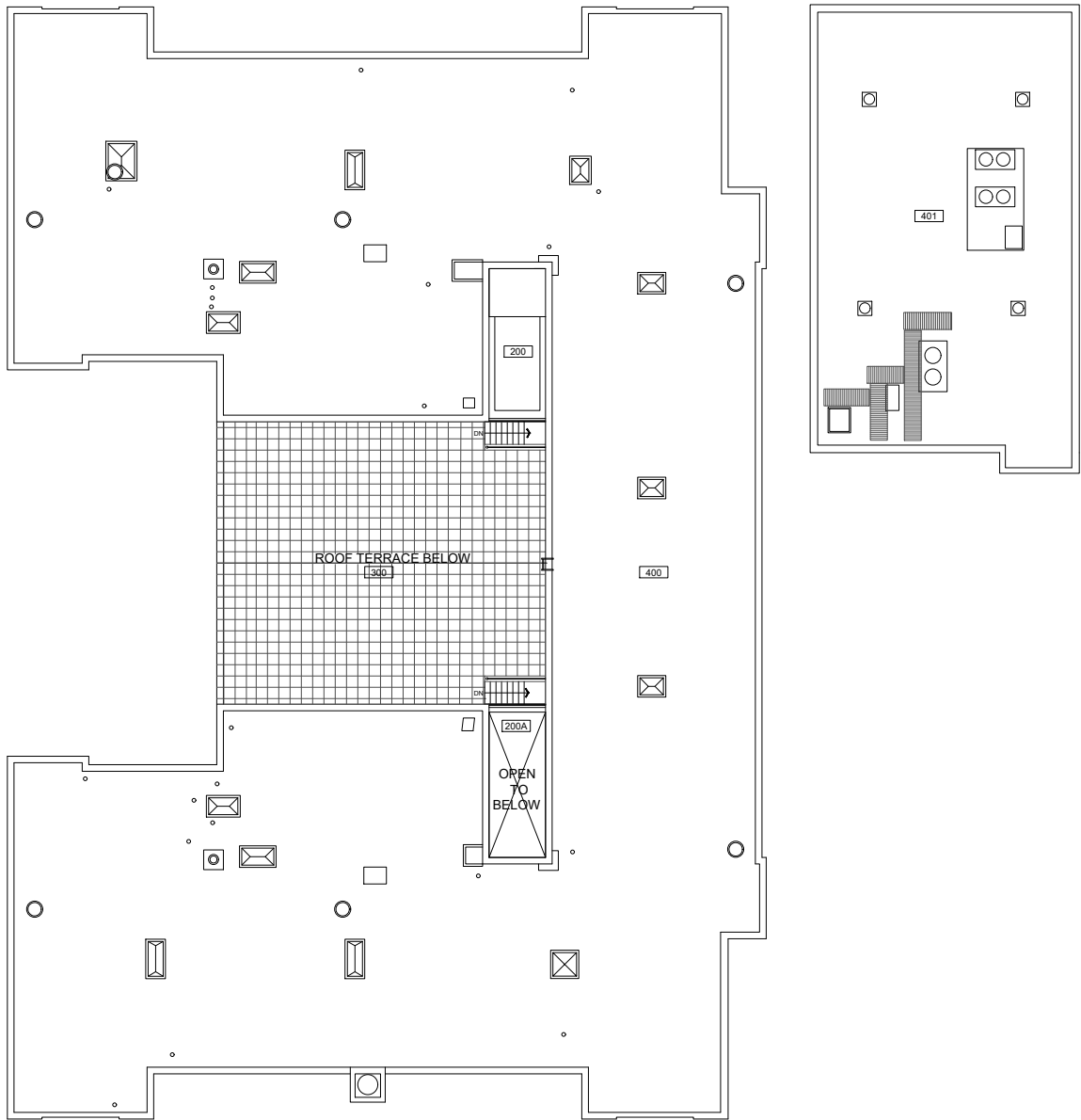
Scale
 1/32" = 1'-0"



Third Floor Plan
 Shattuck Hall
 1914 SW Park Avenue

DRAWN BY:
 HH
 DATE:
 07/2020

198-A4



Scale
 1/32" = 1'-0"



Roof Floor Plan
 Shattuck Hall
 1914 SW Park Avenue

DRAWN BY:
 HH
 DATE:
 07/2020

