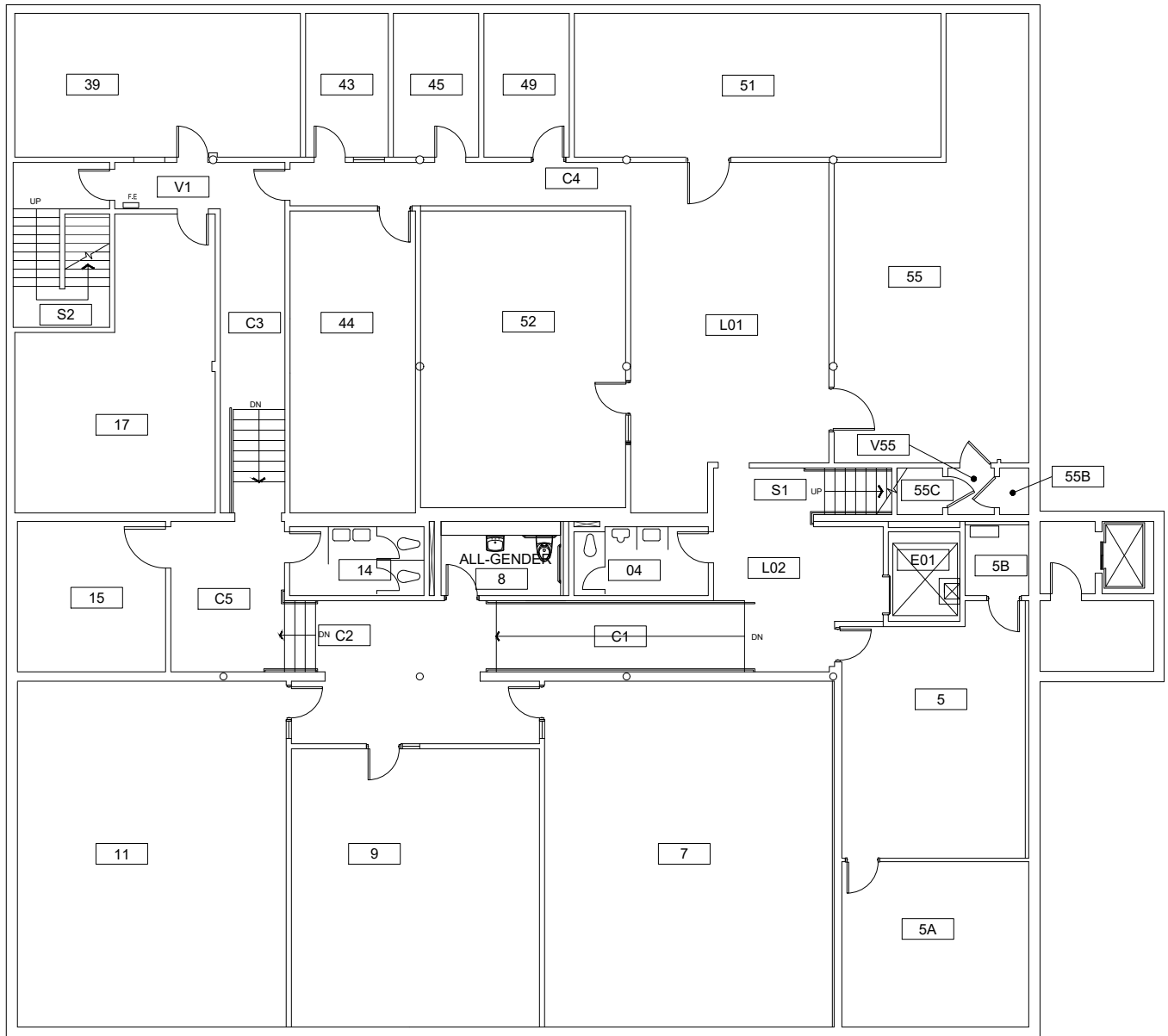


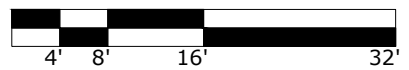
PARKMILL (PKM)

MAIN ENTRANCE ON FIRST FLOOR

If you need assistance, or an accommodation to access an office or classroom please contact:
For Student - Disability Resource Center at (503) 725-4150
For Employees - Human Resources at (503) 725-4926



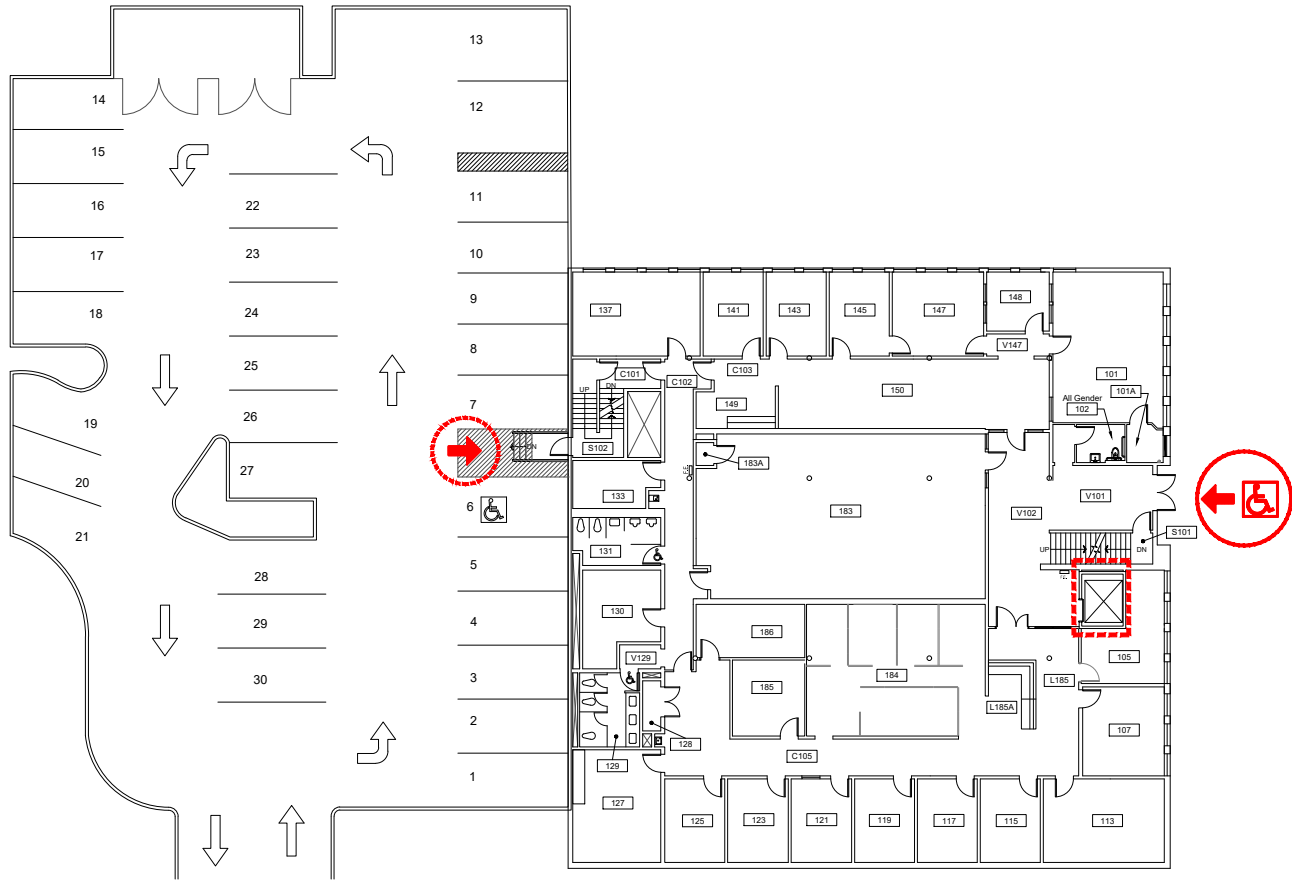
Scale
 1/16" = 1'-0"



BASEMENT FLOOR PLAN
 Parkmill
 1633 SW Park Ave

DRAWN BY:
 HH
 DATE:
 01/2021

227_AB1



Scale
 1/32" = 1'-0"



ELEVATOR ACCESS



WHEELCHAIR ACCESS



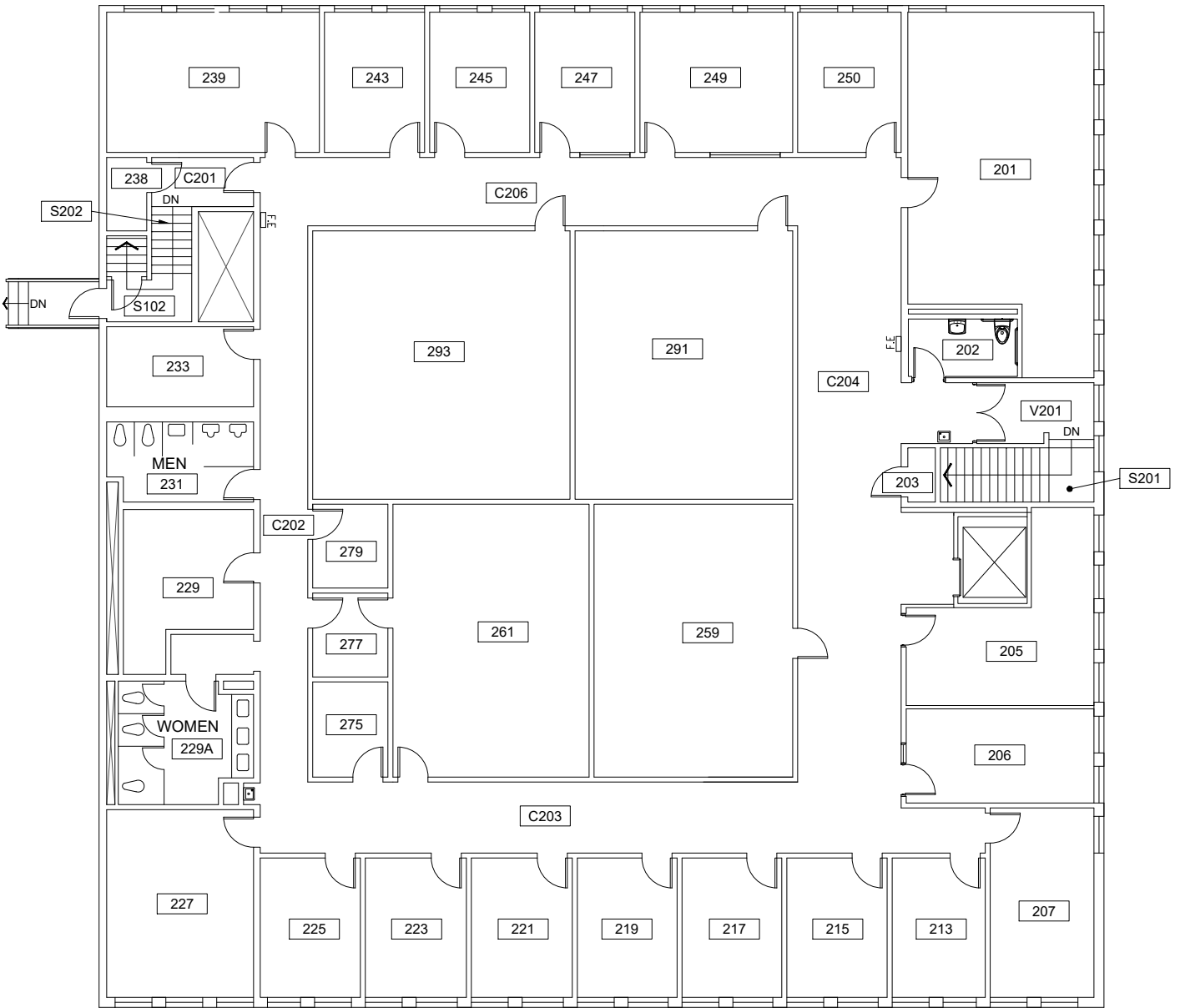
BUILDING ACCESS - NOT
 WHEELCHAIR ACCESSIBLE



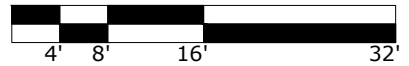
FIRST FLOOR PLAN
 Parkmill
 1633 SW Park Ave

DRAWN BY:
 HH
 DATE:
 01/2021

227_A1

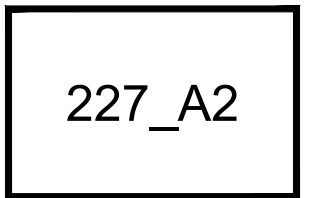


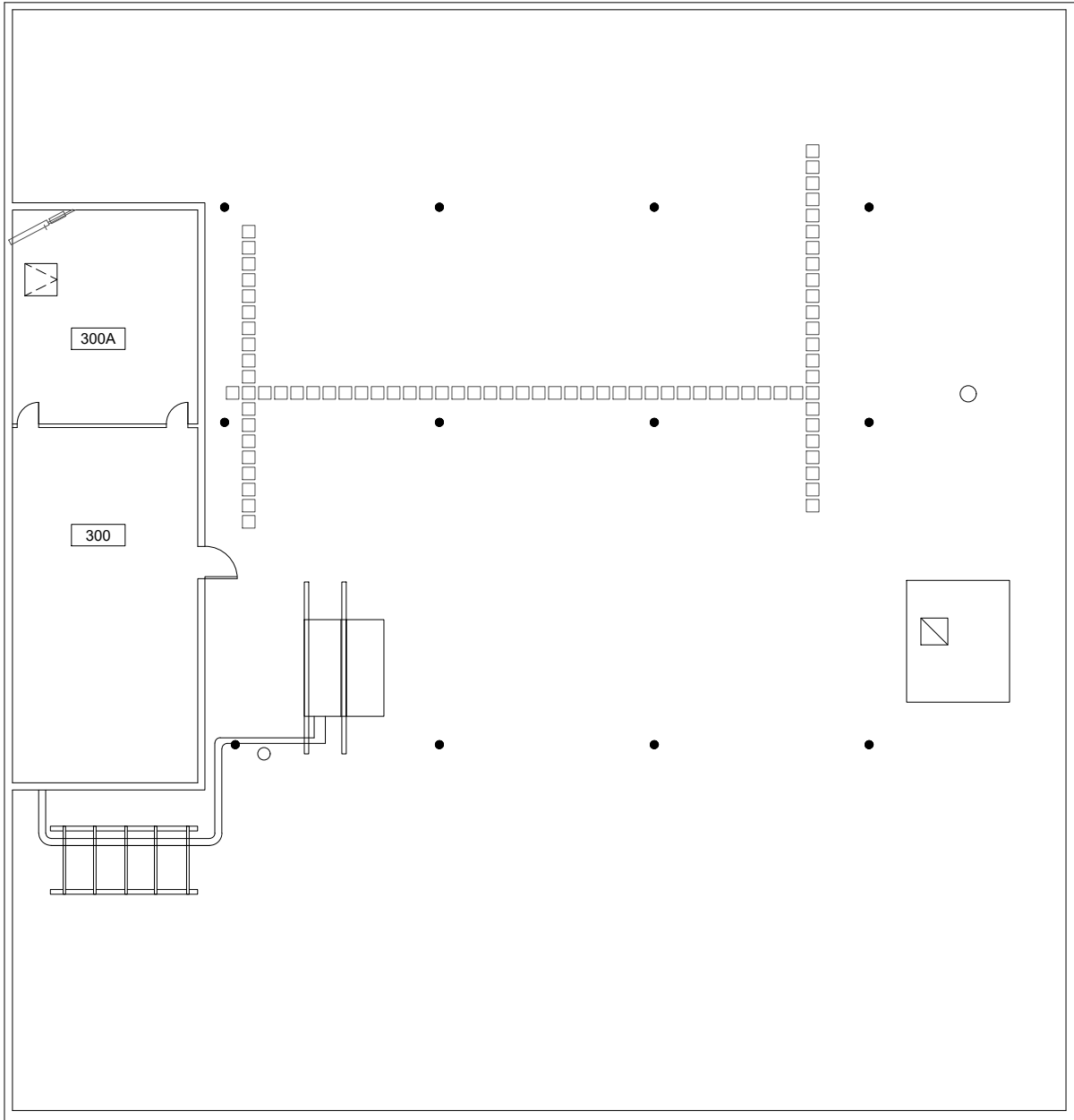
Scale
 1/16" = 1'-0"



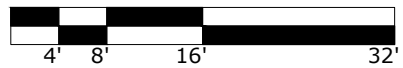
SECOND FLOOR PLAN
 Parkmill
 1633 SW Park Ave

DRAWN BY:
 HH
 DATE:
 01/2021





Scale
 1/16" = 1'-0"



ROOF PLAN
 Parkmill
 1633 SW Park Ave

DRAWN BY:
 HH
 DATE:
 08/2018

227_A3