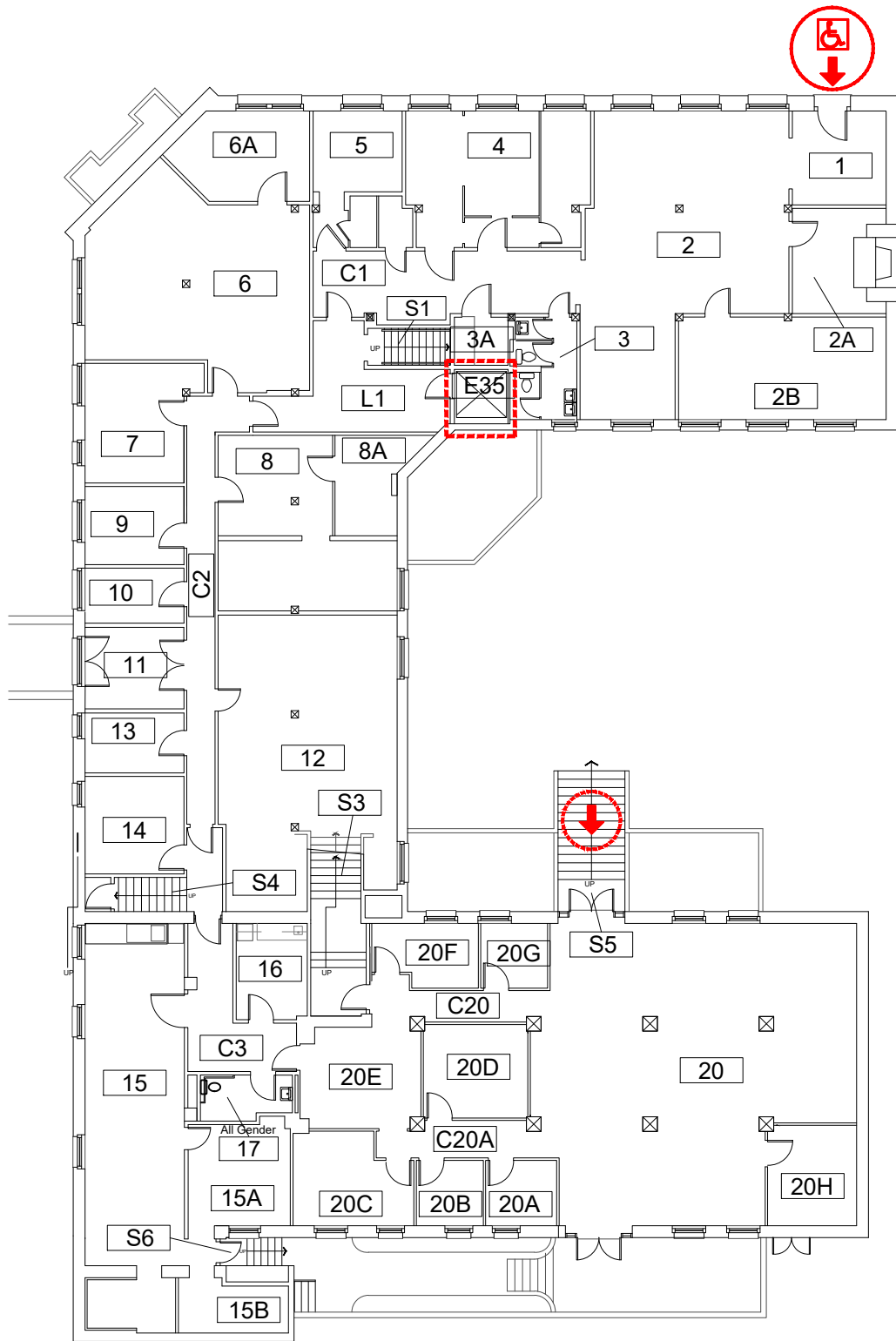


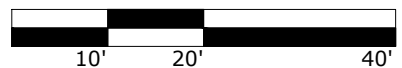
# MONTGOMERY RESIDENCE HALL (MONT)

MAIN ENTRANCE ON FIRST FLOOR

If you need assistance, or an accommodation to access an office or classroom please contact:  
For Student - Disability Resource Center at (503) 725-4150  
For Employees - Human Resources at (503) 725-4926



Scale  
1" = 20'-0"



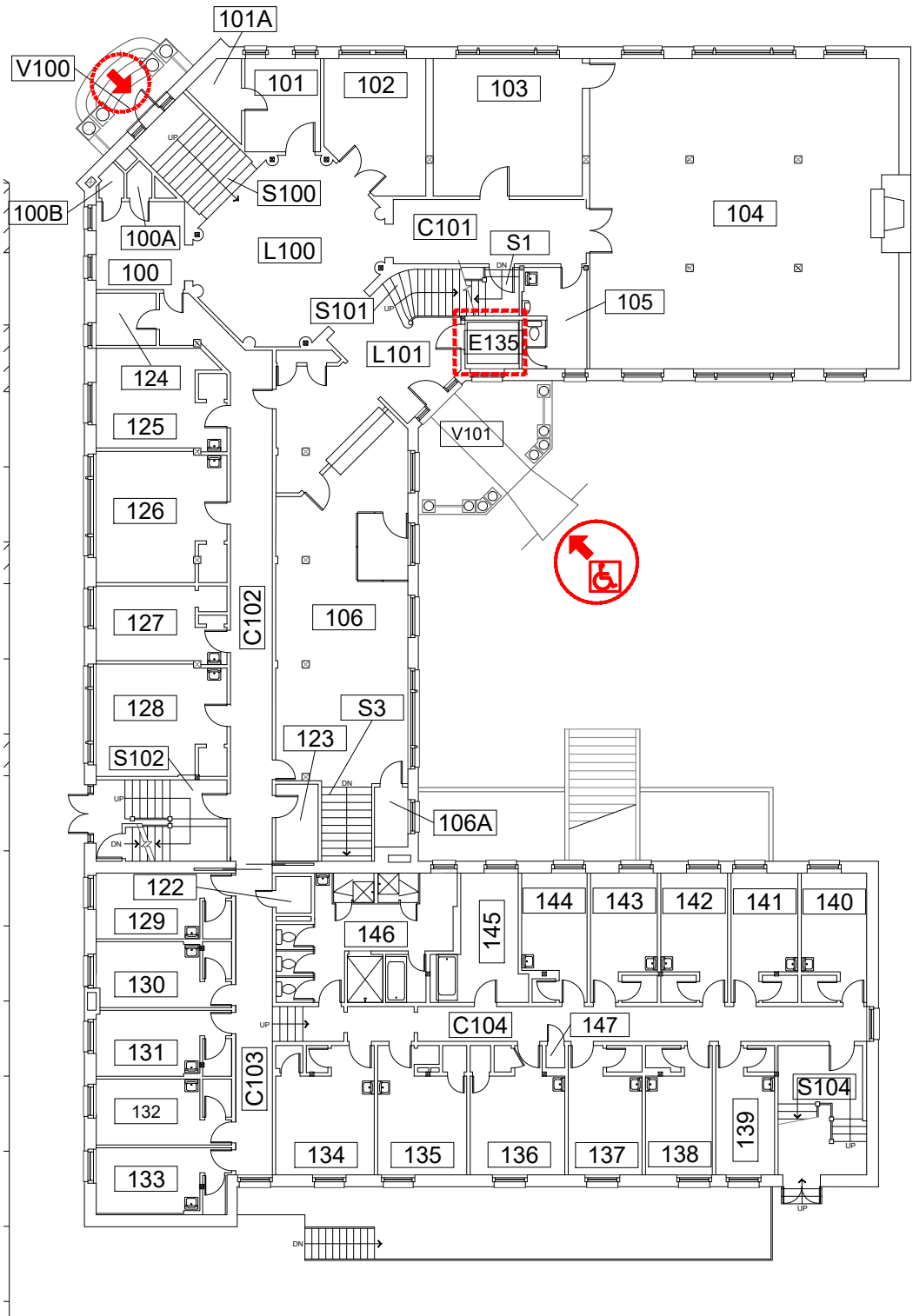
ELEVATOR ACCESS



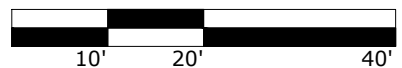
WHEELCHAIR ACCESS



BUILDING ACCESS - NOT  
WHEELCHAIR ACCESSIBLE



Scale  
1" = 20'-0"



ELEVATOR ACCESS



WHEELCHAIR ACCESS



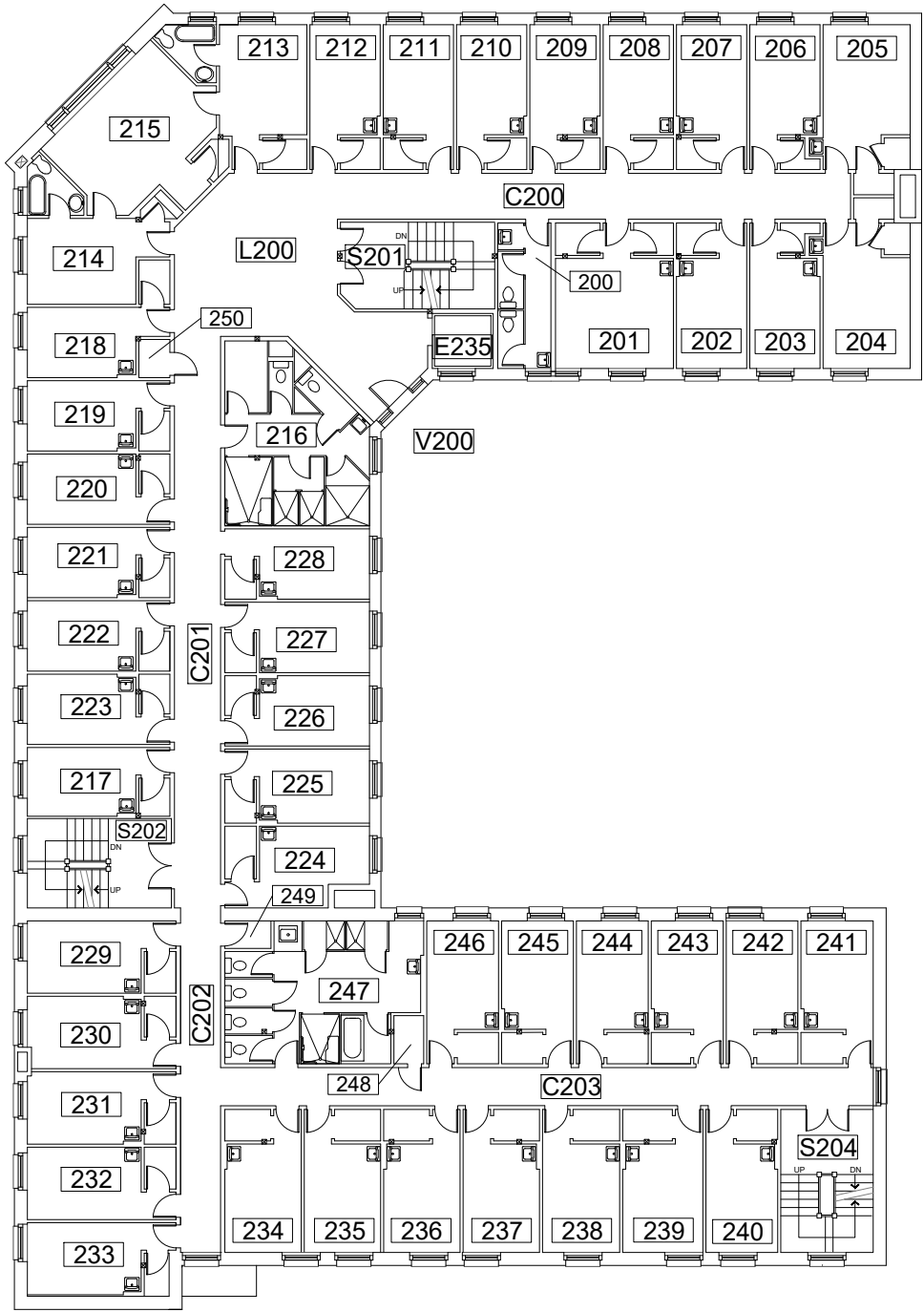
BUILDING ACCESS - NOT  
WHEELCHAIR ACCESSIBLE



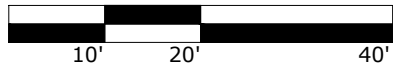
FIRST FLOOR PLAN  
Montgomery Hall  
1802 SW 10th Ave

DRAWN BY:  
HH  
DATE:  
02/2017

229\_A1

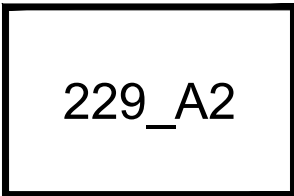


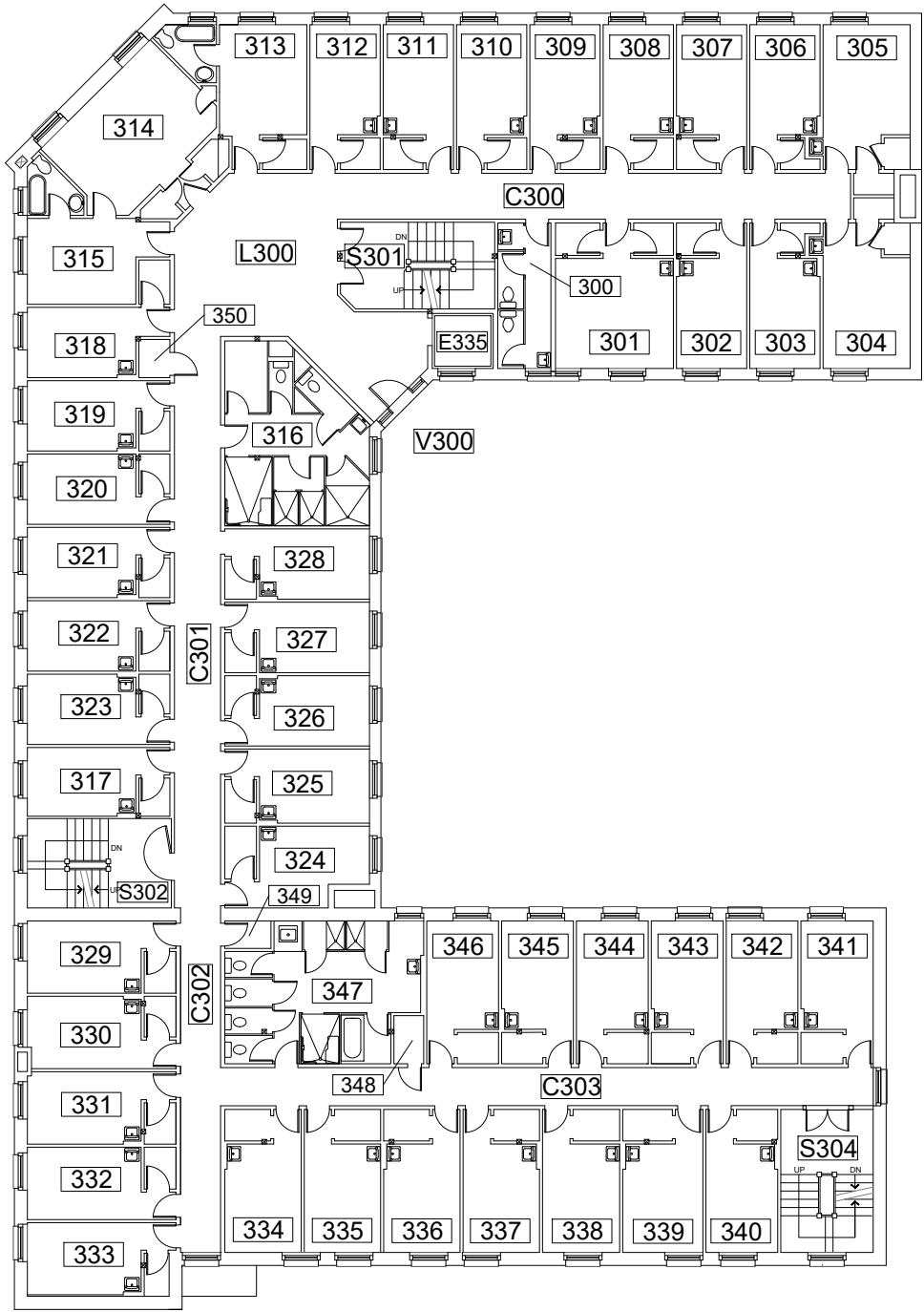
Scale  
1" = 20'-0"



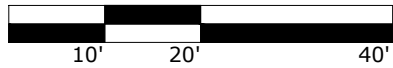
SECOND FLOOR PLAN  
Montgomery Hall  
1802 SW 10th Ave

DRAWN BY:  
HH  
DATE:  
02/2017





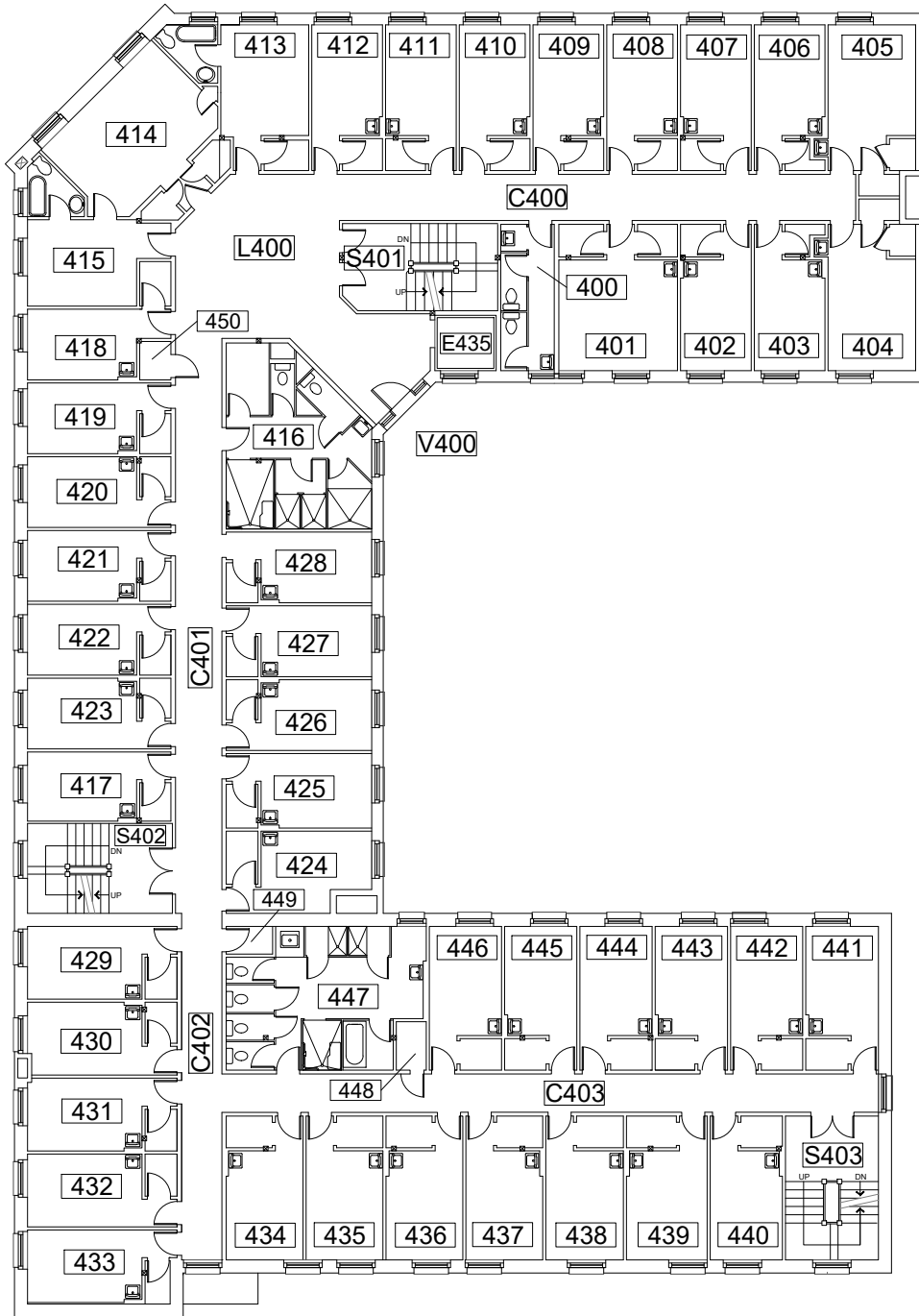
Scale  
1" = 20'-0"



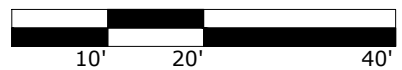
THIRD FLOOR PLAN  
Montgomery Hall  
1802 SW 10th Ave

DRAWN BY:  
HH  
DATE:  
02/2017

229\_A3

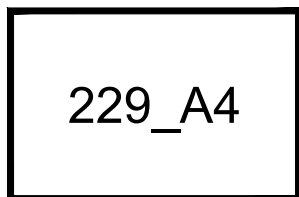


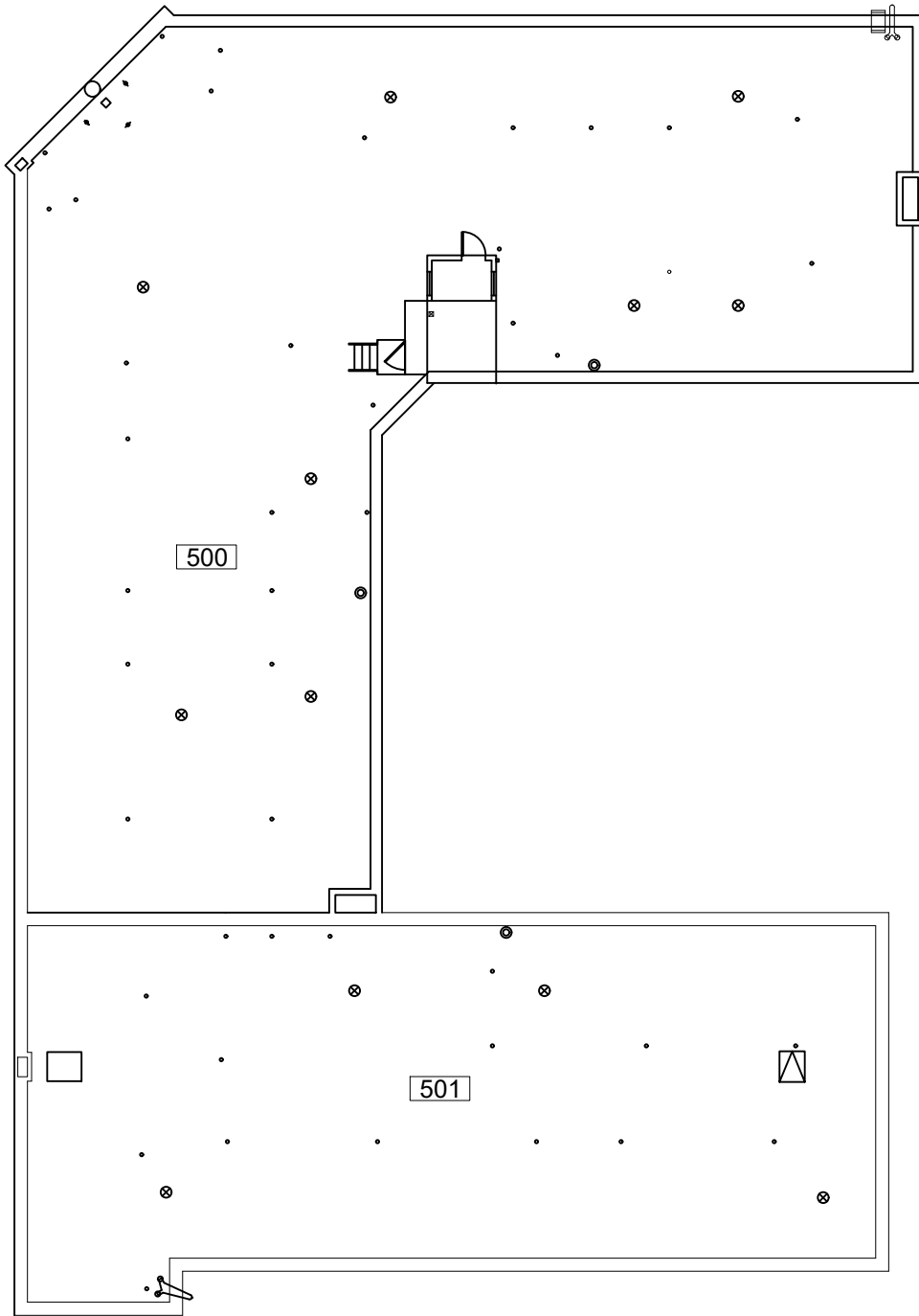
Scale  
1" = 20'-0"



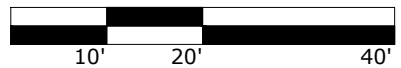
FOURTH FLOOR PLAN  
Montgomery Hall  
1802 SW 10th Ave

DRAWN BY:  
HH  
DATE:  
02/2017





Scale  
1" = 20'-0"



ROOF PLAN  
Montgomery Hall  
1802 SW 10th Ave

DRAWN BY:  
HH  
DATE:  
02/2017

