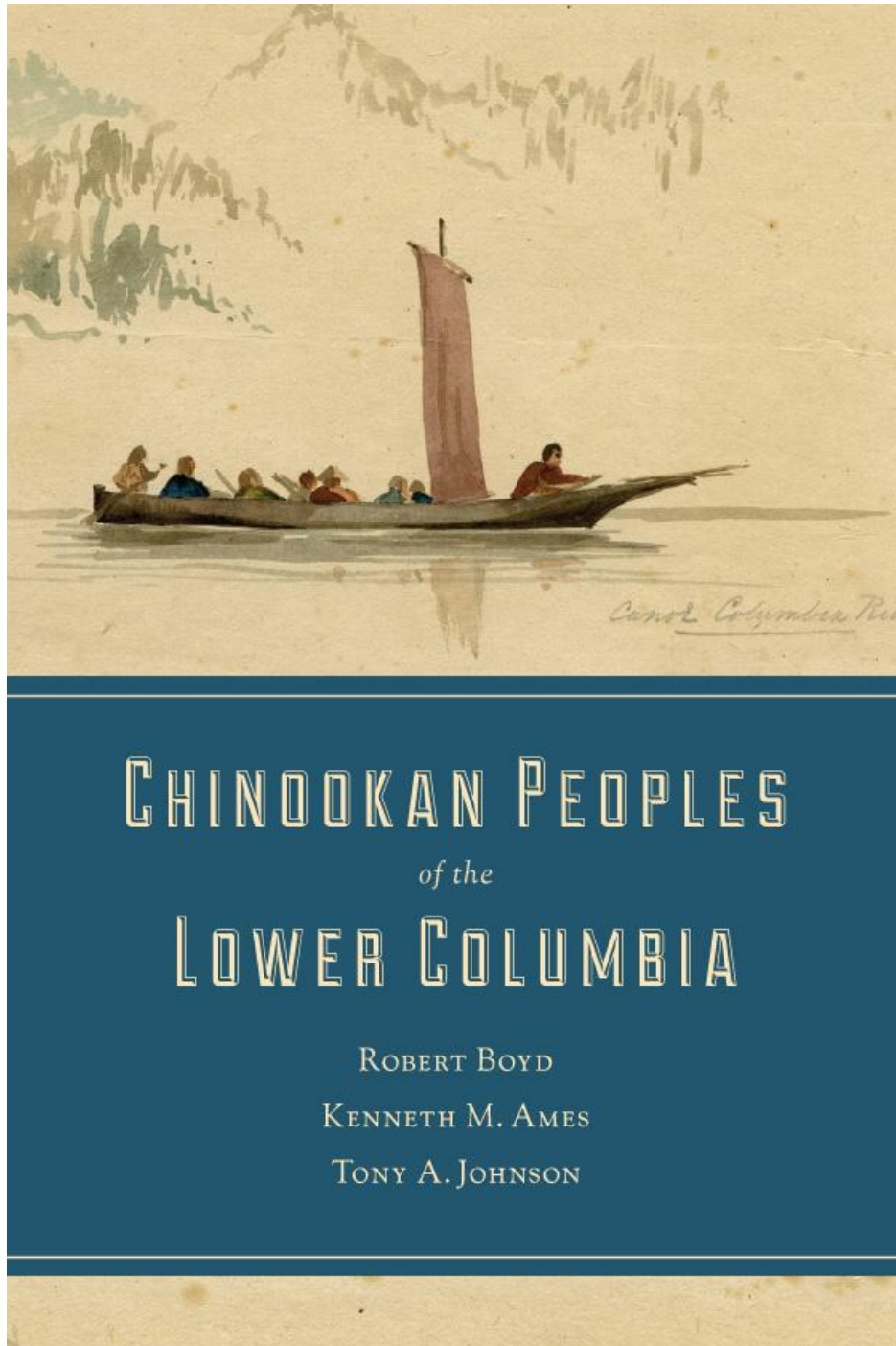


Supplemental Materials for:

Chapter 5: Lower Columbia Trade and Exchange Systems. Yvonne Hajda and Elizabeth A. Sobel. *Chinookan Peoples of the Lower Columbia River* (R.T. Boyd, K.M. Ames, T. Johnson editors). University of Washington Press, Seattle 2013



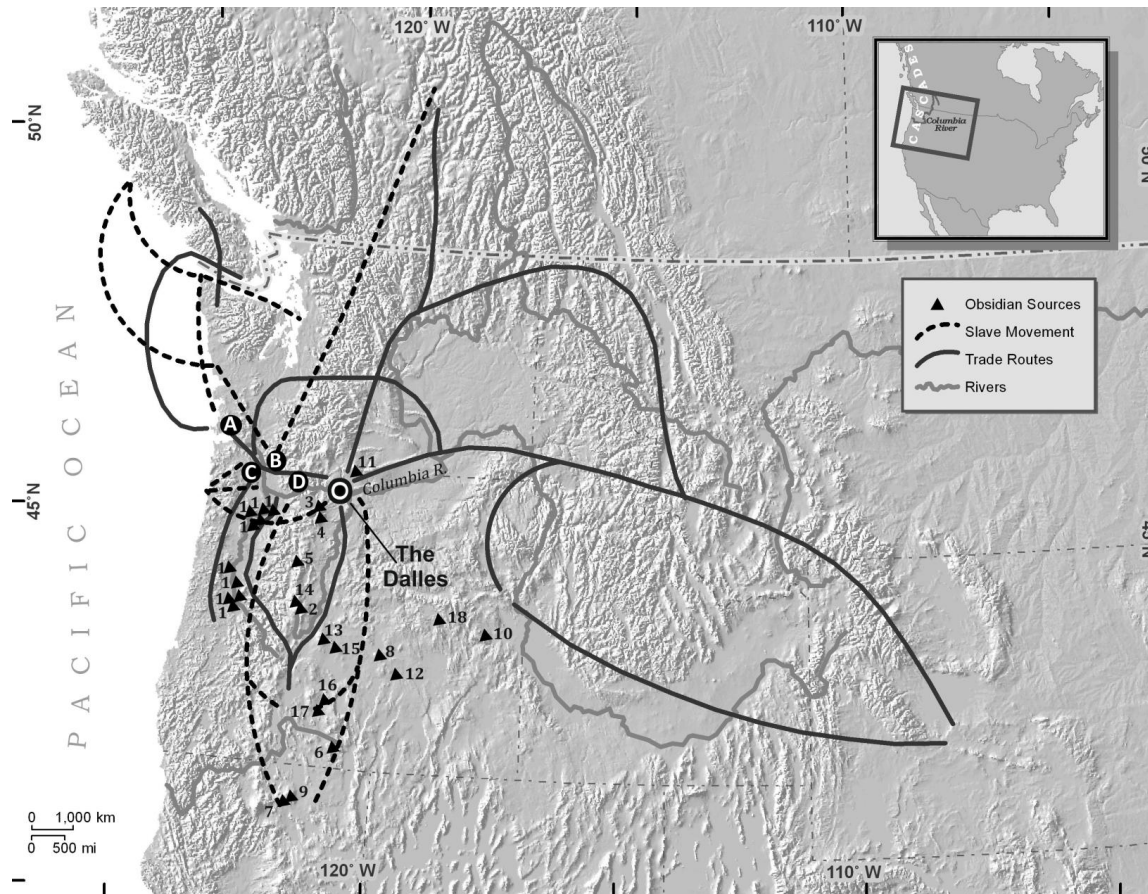


Figure S5.1 Lower Columbia River Exchange System Based on Ethnohistorical Sources. Site designations are as follows: 1, Meier; 2, Cathlapotle; 3, Clahclellah. The trade routes are based on Stern (1998). The slave raiding and trading routes are based on Donald (1997) and Ames (2008). Obsidian source names are as follows: 1 Big Stick; 2 Carver Flow; 3 Clackamas; 4 Cold Point; 5 Devil Point; 6 Drews Creek / Butcher Flat; 7 Grasshopper Flat / Lost Iron Well / Red Switchback; 8 Glass Buttes; 9 Glass Mountain; 10 Gregory Creek; 11 Indian Rock; 12 Inman Creek; 13 Newberry Volcano; 14a Obsidan Cliffs, primary deposits; 14b, Obsidan Cliffs, secondary deposits; 15 Quartz Mountain; 16 Silver Lake / Sycan Marsh; 17 Spodue Mountain; 18 Whitewater Ridge. Trade routes based on Stern (1998). Slaving routes based on Donald (1997) and Ames (2008). Figure prepared by J. Rideout.

Figure S5.1