

PORTLAND STATE UNIVERSITY

Thank you for joining us we will get started shortly.



Portland State
UNIVERSITY

IS FROM YOUR CIVIL SPACE

JohnsWaterproofing.com
503-458-8294

PRESENTERS



**Kanani
Porotesano**
Moderator,
Assistant Director
of Campus Visits



Chuck Knepfle
Vice President for
Enrollment
Management



Emma Stocker
Director, Emergency
Management



Courtney Shiroma
Interim Executive
Director of Housing
and Residence Life

AGENDA

1	Welcome and Introductions
----------	---------------------------

2	Health & Safety Precautions
----------	-----------------------------

3	Instruction
----------	-------------

4	Class Scheduling
----------	------------------

5	Housing & Student Life
----------	------------------------

6	Student Services
----------	------------------

7	Admissions
----------	------------

8	Question & Answer
----------	-------------------

PSU FALL FLEX

FALL PLAN OVERVIEW

- Prioritizing health and safety while still providing access to student services and resources.
- Offering a variety of course delivery options: remote, in-person, hybrid, and online.
- Creating a safe on-campus experience by requiring (and supplying) face coverings, providing sanitizers across campus, offering COVID-19 testing, and carrying out contact tracing.
- Adjusting campus life activities and resources to support student in a remote environment.



HEALTH & SAFETY PRECAUTIONS

Health & Safety Precautions

Physical Distancing Practices

- Must be followed by everyone on PSU property
- Maintain 6 feet of distance
- Follow directions on signage about space occupancy, lines, and other social distancing measures
- Modifications to common spaces across campus

Face Coverings

- Face coverings are required indoors and in shared spaces on campus
- Face coverings are recommended outdoors when on PSU property and when physical distancing (at least 6 feet apart) cannot be met

Sanitation and Hygiene

- Hand sanitizer and cleaning wipes will be available throughout campus
- Enhanced custodial services will continue including cleaning high-touch / high-traffic areas more frequently



INSTRUCTION

Instruction

Fall Term Schedule that specifies course delivery will be available no later than August 10.

Course Delivery Methods

- In-Person
- Hybrid
- Remote - Scheduled Meetings
- Remote - No Specific Meeting Time
- Online (online fee charged)

Expanded use of Pass/No Pass Grading for Fall Term

Add/Drop Deadlines

- Last day to add courses for fall term is October 4, 2020.
- Last day to drop courses with 100% refund is October 4, 2020.
- More deadlines can be found in the Academic Calendar.



Course Delivery Methods

In-Person

Course delivery takes place in-person at standard, published meeting times and location. In-person attendance is required.

Hybrid

Classes in which a significant amount of the course learning activity has been moved to the digital environment, making it possible to reduce the amount of time spent in-person in the classroom.

Traditional in-person instruction is reduced but not eliminated.

Remote - Scheduled Meetings

Remote courses shift the delivery of content designed for in-person to a virtual format, most commonly using live video-conferencing for the typical in-class lessons and lectures. **Synchronous meetings require students to login during the published meeting times** to interact with the class and view lectures.

Remote - No Specific Meeting Time

Remote courses shift the delivery of content designed for in-person to a virtual format, most commonly via asynchronous video-recordings for lessons and lectures. **No specific meeting times are published or required.**

Online

A fully online course that has been intentionally designed and constructed for complete digital interaction. **Online courses are subject to the \$35 per credit Online Fee.**

Class Scheduling

Search by Course Delivery Method

Browse Classes

Enter Your Search Criteria
Term: Fall 2020 Quarter

UNST Junior Cluster

Attributes & No Cost Textbook

Level

Course Delivery Method

Credit Hour Range to hours

Meeting Days

Sunday

Monday

Tuesday

Wednesday

Thursday

Search Clear Advanced Search

Course Listing

11958	MTH	105	001	<u>EXCURSIONS IN MATH</u> Lecture	4
14923	MTH	105	OL	<u>EXCURSIONS IN MATH</u> Lecture Online - Add \$35 per credit	4
11959	MTH	111	001	<u>INTRO COLL MATH I</u> Lecture	4
14714	MTH	111	002	<u>INTRO COLL MATH I</u> Lecture	4

Class Details (pop-up window when you click on course title)

Class Details for EXCURSIONS IN MATH Mathematics 105 OL

Term: 202004 | CRN: 14923

Class Details

Bookstore Links

Course Description & Notes

Attributes

Restrictions

Instructor/Meeting Times

Enrollment/Waitlist

Corequisites

Linked Corequisite Sections

Prerequisites

Cross Listed Courses

Add'l Fees

Associated Term: Fall 2020 Quarter
CRN: 14923
Campus: Institutional (PSU)
~~Schedule Type: Lecture~~
Instructional Method: Online - Add \$35 per credit
Section Number: OL
Subject: Mathematics
Course Number: 105
Title: EXCURSIONS IN MATH
Credit Hours: 4
Grade Mode: Multiple grade options are available, commonly A-F or P/NP. After registering for the course, review grading options in the "Schedule and Options" tab.

Close

Classroom Safety

In-person maximum room capacity

- Classes over 25 people will be remote
- Modifying furniture layouts for physical distancing
- Courses that occur in-person assigned a room that allows for appropriate physical distancing

Enhanced cleaning and sanitation

- Cleaning supplies provided in classrooms and custodial work will include more frequent daytime rounds
- Face coverings are required
- Upgrading ventilation systems to make it the safest environment possible

Expand technology into every classroom

- Setting up Zoom-capable classrooms, enabling students to connect remotely in real-time, in addition to capturing recordings of class sessions that can be viewed later



“If all my classes are online can I still live on campus?”

“How can I make sure I get into an in-person class?”

Yes. Students will have the option to reside in campus housing in fall term and throughout the academic year. Safety protocols are in place to ensure healthy accommodations including ample living space to ensure physical distancing and flexible on-campus dining options.

This is not something we can promise. We won't know until August 10, and it's possible that most or all of your courses will be hybrid, remote, or online. Work with your advisor to select the courses that are appropriate for your major.

HOUSING & MEALS

UNIVERSITY HOUSING & RESIDENCE LIFE

August 17: Contract Cancellation Deadline

Housing is available to students throughout the 2020-2021 Academic Year

- Students who have already applied to housing can defer to Winter term
- Move-in will be by appointment between Thursday, 9/24 and Friday, 9/25
- Cancellations by August 17: \$140 prepayment will be refunded

Housing Assignments

- Assignments are guaranteed for students who have submitted a contract
- We will be prioritizing single occupancy for Fall term to ensure health and safety
- If you signed up for a double room for Fall you are guaranteed the double room rate

Meal Plans

- Victor's Dining Hall will be open
- "To-go" meals only, additional cleaning processes and no serve yourself options.



“Can I live on campus even if all my classes are remote or online?”

Yes, you can live on campus if all of your courses are remote or online. Other campus spaces will be open to students including the Library, Center for Student Health and Counseling, and Campus Rec.

“Can I defer my housing application to winter term?”

Yes, you can defer living on campus to Winter term. If you defer by August 17, you will not be charged for Fall term and will move into your new home for Winter.

CAMPUS LIFE

Library will be open with access to learning materials and study spaces.

Technology Needs: laptops, portable WiFi hotspots, and other learning technology accessories will be available for checkout; on-campus computer labs will be open and academic software applications are accessible through Virtual Computer Lab.

Campus Rec plans to be open fall term with programs designed to promote wellness in innovative formats; rec club practices, events, and trips are canceled until further notice.

All **Center for Student Health & Counseling (SHAC)** regular services will be available and telehealth access for basic health screening and counseling services. SHAC will also provide on-site rapid coronavirus testing and will collaborate with Multnomah County for contact tracing.

Resource centers and student groups: many **student groups** have moved their regular meetings to virtual events. There are many opportunities to engage in **student leadership** from wherever you are. Our 11 **Cultural and Resource Centers** are offering virtual and phone appointments and hosting virtual events.



Connect with Campus Virtually

Connect2PSU Days

Half-day virtual events for incoming students, designed to introduce you to fellow new students, Orientation Leaders, and PSU staff representing a variety of campus resources and services. Family members or those supporting new PSU students are also invited to attend.

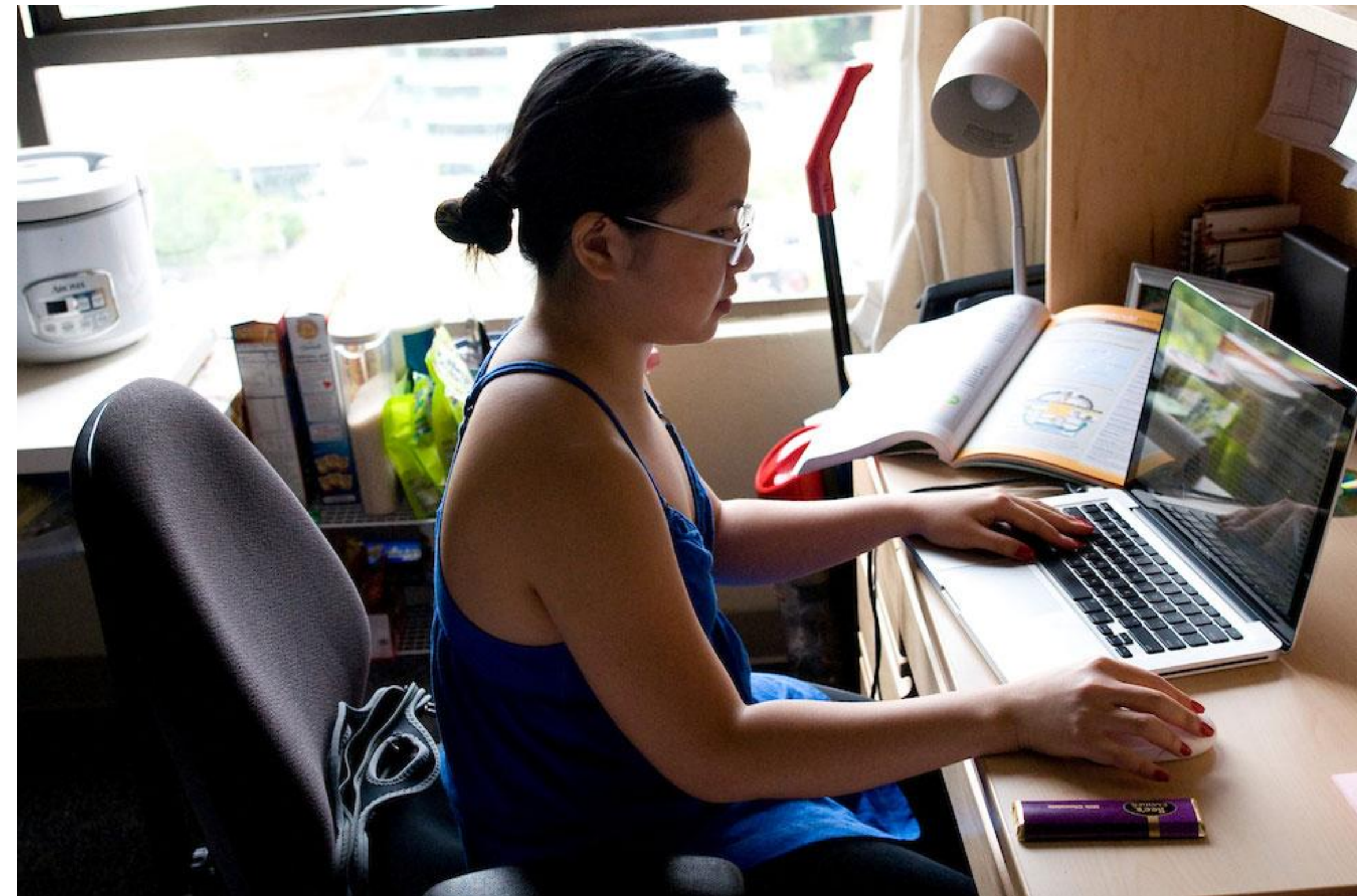
Resource Center Webinars

Virtual events with PSU's Resource Centers to learn more about the center, what they offer students, and how you can get involved.

Session for Family

Learn more about how you can support your new student's emotional and academic journey during their first year as a PSU student.

pdx.edu/admissions/orientation/engage



STUDENT SERVICES

**Tuition & Fees, Student Finance, Registration,
OIT Helpdesk, Academic Services**

STUDENT SERVICES

VIRTUAL APPOINTMENTS, CHAT, EMAIL, AND PHONE

- **Tuition & Fees:** Tuition has been set for the 2020-2021 academic year
- **Financial Hardships:** Contact Office of Financial Aid
- **Registration:** Online registration available 24/7 via your student account
- **Technology Helpdesk:** available 8am to midnight, 7 days a week and offering remote desktop appts.
- **Academic Services:** Learning center, tutoring, advising pdx.edu/student-life/support-services



ADMISSIONS

Admission Processes and Next Steps

Deferment Options

Gap Year Deferral

- Student can apply for a Gap Year Deferral
- Start in the following fall term and retain financial aid awards
- Cannot take college courses during this time
- DEADLINE extended to September 1

Change Start Term to a Future Term

- Change your start term to Winter, Spring, or Summer 2021
- May not retain financial aid
- Do not have to apply again for a future term
- Can take college course during this time



YOUR NEXT STEPS

1

Confirm Your Enrollment

2

Complete New Student Orientation

3

Register for Classes

4

Submit Final Transcripts by August 1

5

Accept Your Financial Aid Award

6

Sign Up for a Connect2PSU Day

7

Sign Up for a Resource Center Webinar

8

Prepare for Your First Term at PSU



QUESTIONS