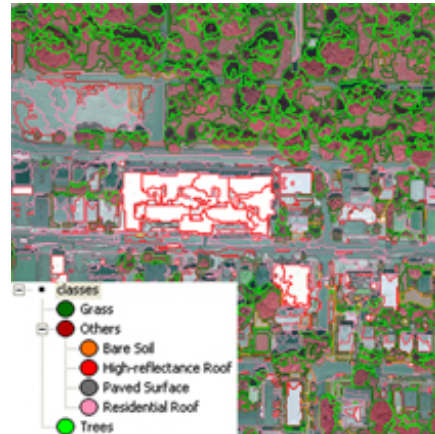


# Geographic Information Science

The development of Geographic Information Science (GIS) theories, tools, and databases that provide scientific approaches to geographic inquiries, environmental management and policy-making. Specific topics include environmental (change) monitoring and detection, spatially explicit environmental modeling, environmental information geo-visualization and communication, and the development of spatial decision support systems for resource management, hazard response and planning, and sustainable developments.



## Faculty and staff

Duh
Poracsky
Chang
Lafrenz
Banis
Scheller
Percy
Shandas
Monsere
Moradkhani
Nielsen
Noone
Bernert
Kagan
Banis

## PhD Students


## Affiliated centers or institutes


## Example Graduate Courses