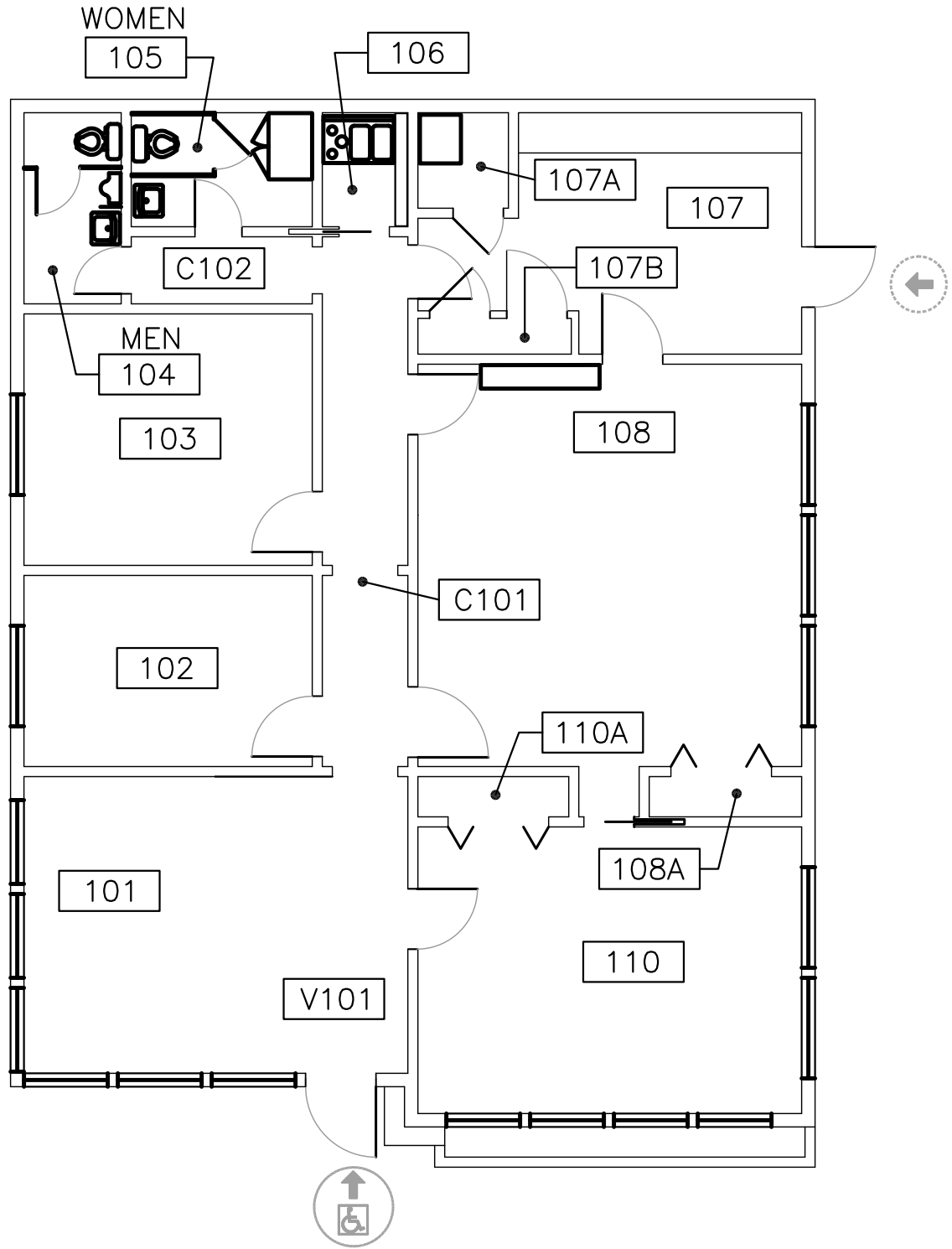


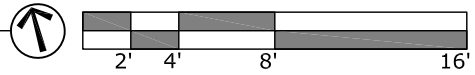
ITECK CENTER

MAIN ENTRANCE ON FIRST FLOOR

If you need assistance, or an accommodation to access an office or classroom please contact:
For Student - Disability Resource Center at (503) 725-4150
For Employees - Human Resources at (503) 725-4926



Scale
1/8" = 1'-0"



 ELEVATOR ACCESS

 WHEELCHAIR ACCESS

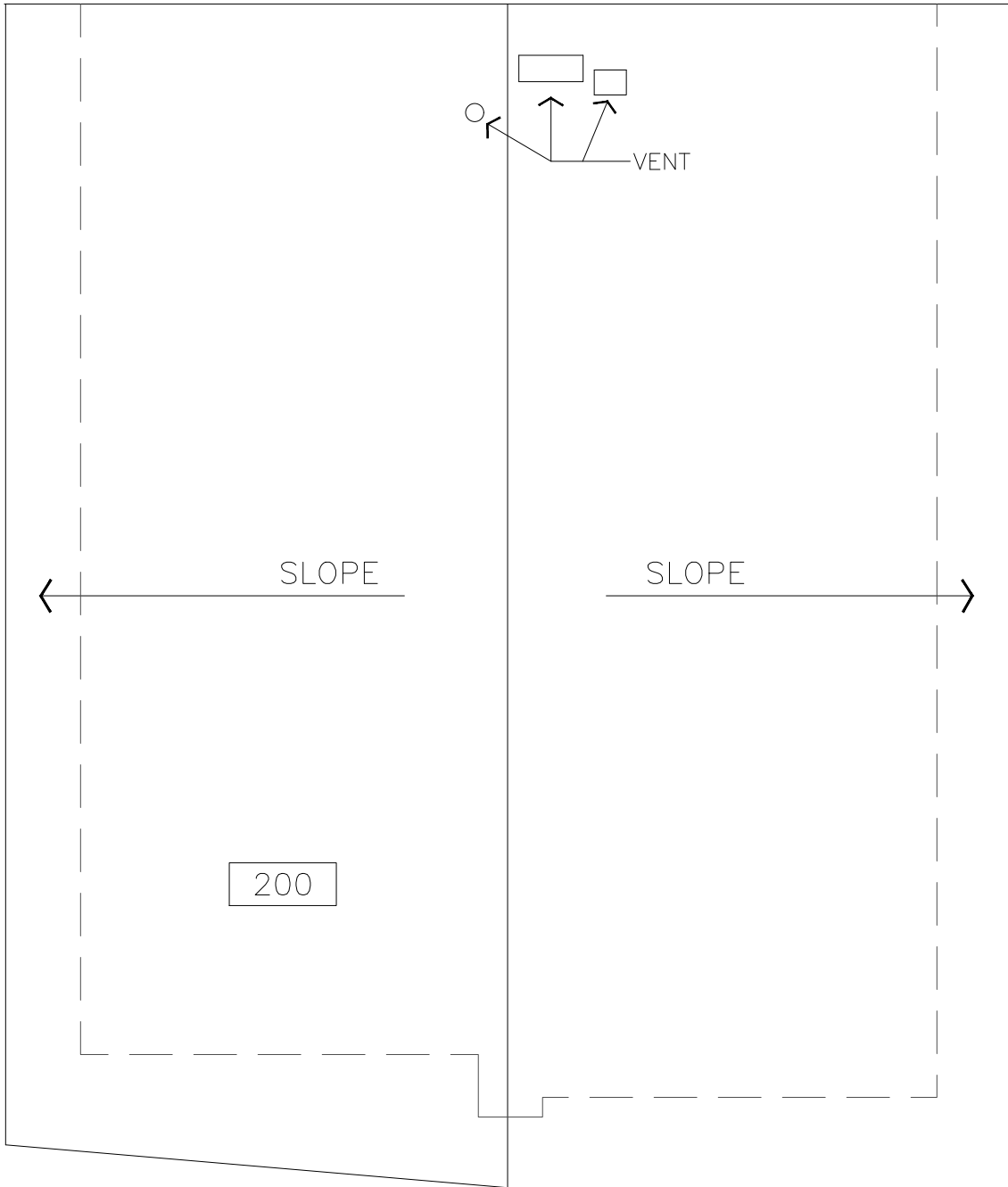
 BUILDING ACCESS - NOT WHEELCHAIR ACCESSIBLE



First Floor Plan
ITECK Center
1025 SW Harrison St

DRAWN BY:
NR
DATE:
10/2023

240_A1



Scale
1/8" = 1'-0"



Roof Plan
ITECK Center
1025 SW Harrison St

DRAWN BY:
ASL
DATE:
08/2020

240_A2