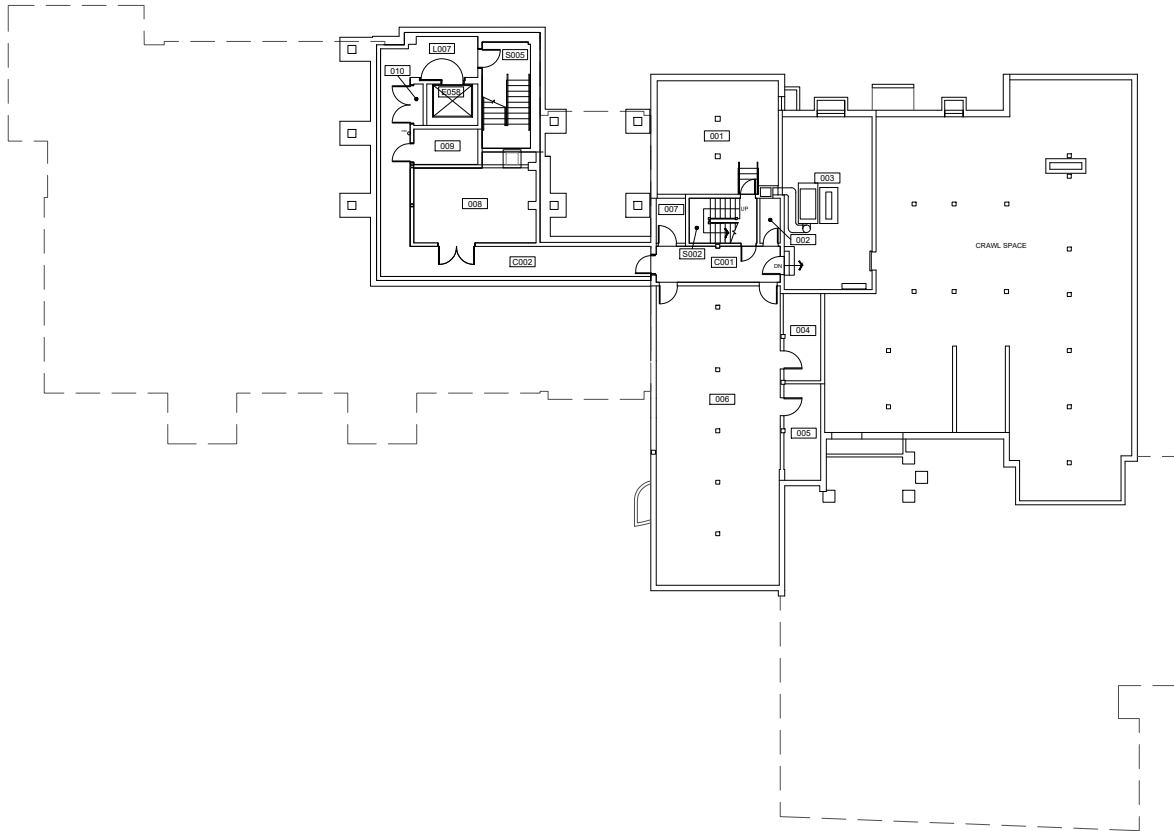


# Helen Gordon Child Development Center (HG CDC)

MAIN ENTRANCE ON FIRST FLOOR

If you need assistance, or an accommodation to access an office or classroom please contact:  
For Student - Disability Resource Center at (503) 725-4150  
For Employees - Human Resources at (503) 725-4926



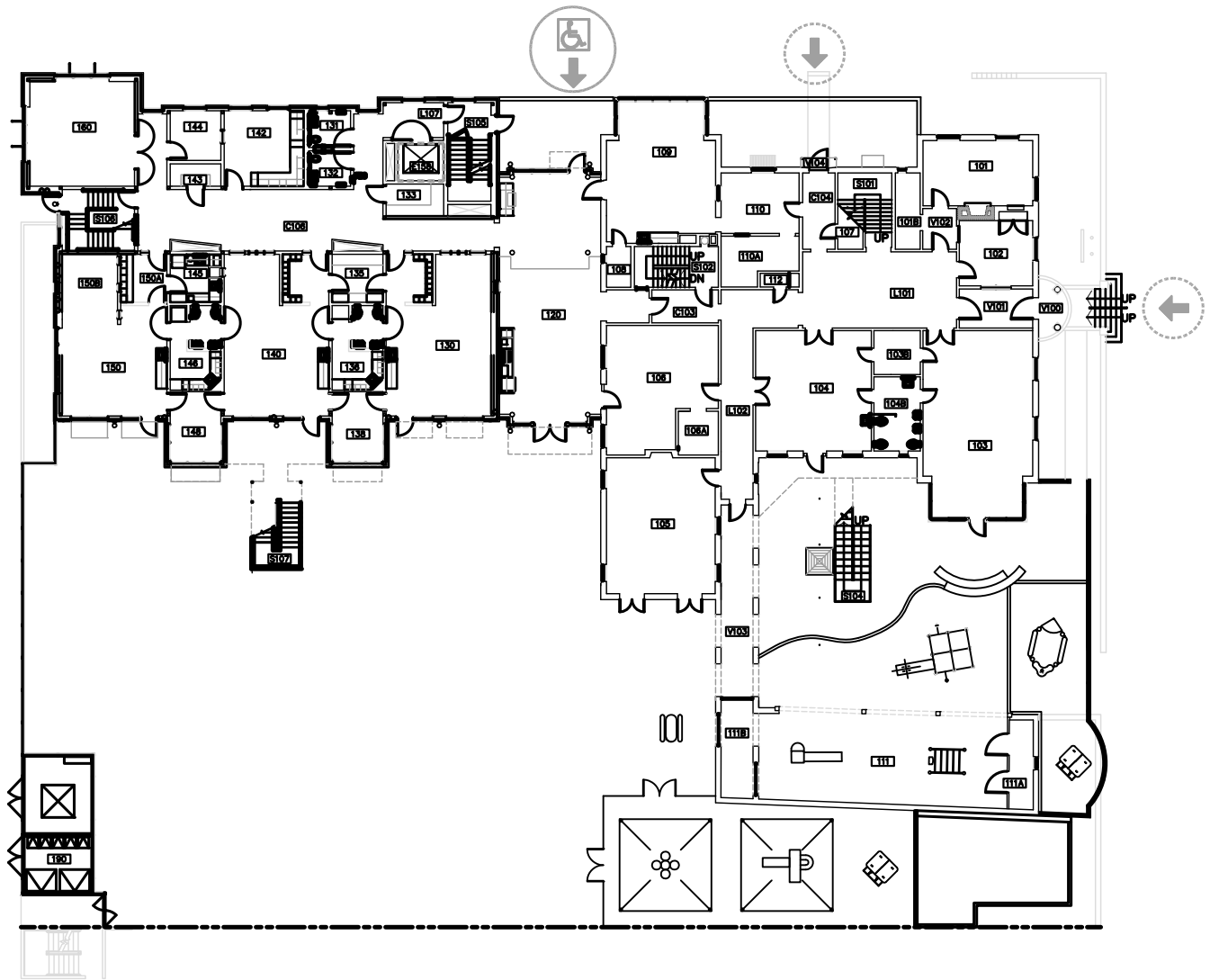
Scale  
 $1/32" = 1'-0"$



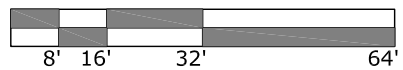
**BASEMENT FLOOR PLAN**  
 Helen Gordon Child Development Center  
 1609 SW 12th Ave

DRAWN BY:  
 HH  
DATE:  
 01/2021

**301\_AB1**



Scale  
 1/32" = 1'-0"



ELEVATOR ACCESS



WHEELCHAIR ACCESS



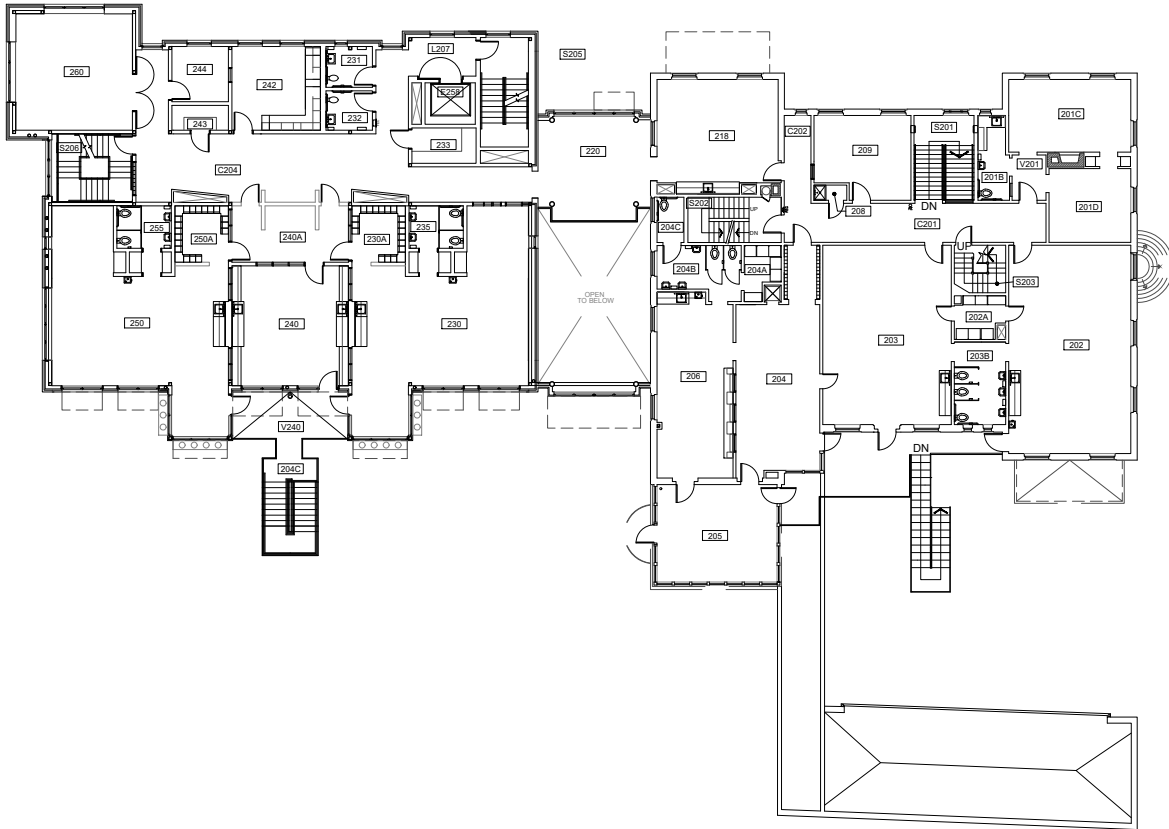
BUILDING ACCESS - NOT  
 WHEELCHAIR ACCESSIBLE



FIRST FLOOR PLAN  
 Helen Gordon Child Development Center  
 1609 SW 12th Ave

DRAWN BY:  
 HH  
 DATE:  
 01/2021

301\_A1

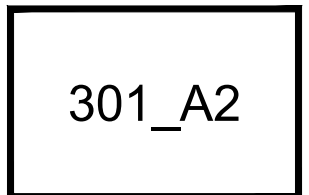


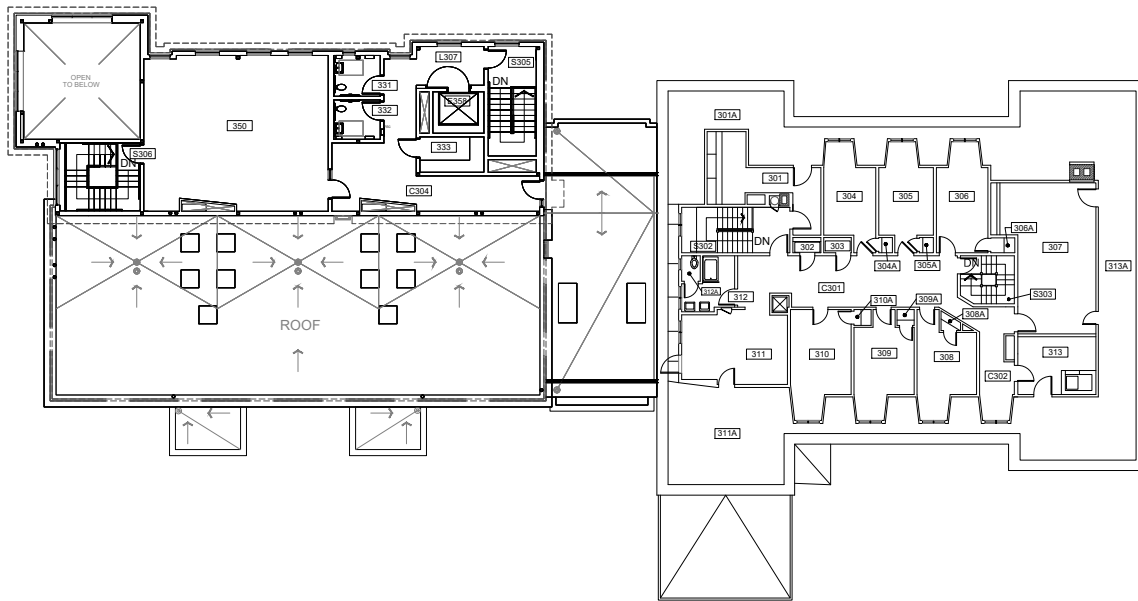
Scale  
 1/32" = 1'-0"



SECOND FLOOR PLAN  
 Helen Gordon Child Development Center  
 1609 SW 12th Ave

DRAWN BY:  
 HH  
 DATE:  
 01/2021





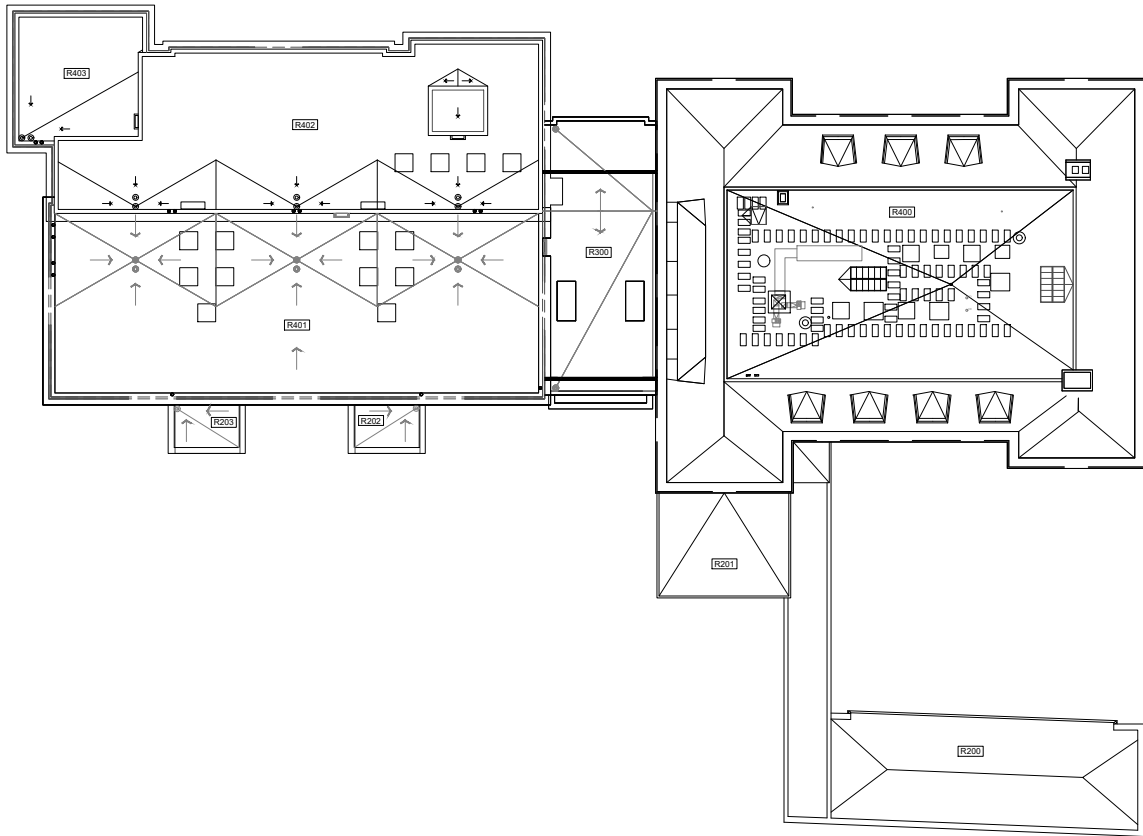
Scale  
 1/32" = 1'-0"



THIRD FLOOR PLAN  
 Helen Gordon Child Development Center  
 1609 SW 12th Ave

DRAWN BY:  
 HH  
 DATE:  
 01/2021

301\_A3



Scale  
 $1/32" = 1'-0"$

